

Expertise

Protocol number: 43425260
Order number / reference: 25745195
Inspection date: 19 Jan 2026

Manufacturer: Skoda

Model: Kodiaq 2.0 TDI DSG Clever

VIN: TMBJJ7NS1N8057871



Vehicle details

Manufacturer / Type / Model / Equipment

Skoda Kodiaq 2.0 TDI DSG Clever

Vehicle Identification number TMBJJ7NS1N8057871

Mileage (Read) 168,844 km

First registration 7 Jul 2022

Number of holders 1

Next periodical technical inspection 07/2027
(Report not on hand)

Power / Engine displacement 110 kw / 1,968 ccm

Fuel type / Cylinder Diesel / 4

Gearbox / Number of gears Automatic / 7

Type of drive Front drive

Type of vehicle SUV

Colour / colour code Graphit-Grau Metallic

Doors / Seats 5 / 5

Upholstery type Cloth

Colour of upholstery Black-Anthracite

readiness to drive Roadworthy



Vehicle details

Maintenance booklet / proof	digital proof / complete	Next maintenance in	8,800 km
Last maintenance on / at	07/2025 at 148,639 km		
Key is / should be	2 / 2	FZG documents	ZB#2 (B) was available (copy), ZB#1 (S) was not available
		Letter No.	GJ930701
Previous damage / Accident	None detectable	Repainting	None detectable
Inspection conditions	sufficient	Lifting equipment / pit	yes
Test drive	Not performed	Engine function test	Performed
readiness to drive	Roadworthy		
Manufacturer key number/ type code number	8004 / ART 02729		
Emission standard	EURO6;WLTP;AP;PI/CI; M, N1 I	Fine dust sticker	
Permitted total weight	2,350 kg	Empty weight	

Tyres

Mounted tyres

#	Tyre size	Type of tyre	Manufacturer	Tread depth
1)	215/65 R17 99H	Winter tyres on Light alloy	Continental	5mm / 5mm
2)	215/65 R17 99H	Winter tyres on Light alloy	Continental	5mm / 5mm

Additional tyres

#	Tyre size	Type of tyre	Manufacturer	Tread depth
1)	235/50 R19 99V	Summer tyres on Light alloy	Pirelli	5mm / 5mm
2)	235/50 R19 99V	Summer tyres on Light alloy	Pirelli	5mm / 5mm

Replacement

Typ	Tyre size	Type of tyre	Manufacturer	Tread depth
Tirefit		Expiration date 05/2026		

Legend: Tread depth for tires on the left is in the first place, for tires on the right is in the second place on the axle in the direction of travel



Equipment

Standard equipment

- 12V socket in the center console and in the trunk
- Storage compartments behind the wheel house in the trunk
- Airbag, driver's knee airbag
- Airbag, front side airbags
- Anti-lock braking system (ABS)
- Dashboard in black / black, door trim in black
- Electrically folding exterior mirrors including interior and driver's side mirrors with automatic dimming
- Hill start assist
- Care Connect: Proactive Services (10-year term)
- Roof rails, black
- Anti-theft alarm system
- tachometer
- Easy Start (start-stop button)
- Electric tailgate operation with comfort opening
- Electronic transverse differential lock (XDS+)
- Headlight assistant and rain sensor
- High Beam Assist (Light Assist)
- front and rear floor mats
- Closed storage compartment on the driver's side
- Tinted windows
- Isofix anchorage on the outer rear seats including top tether
- Boot cover, roll-up and removable
- LED ambient lighting
- LED taillights in crystal glass look & LED license plate lighting
- Steering wheel: Sport leather steering wheel with multifunction buttons including shift paddles
- Rear center armrest with cup holders and through-loading option
- Multifunction display in the instrument cluster, color
- Fog lights with integrated LED daytime running lights
- Parking steering assistant
- Upholstery: Cloth
- Radio: Amundsen infotainment system (Clever)
- Radio accessories: Digital radio reception DAB+
- Radio accessories: Wireless SmartLink
- Wheels: 19" Aronia AERO Platinum alloy wheels
- Rear seat backrest 60:40 split folding, longitudinally adjustable, backrest angle
- Power steering, electromechanical
- Seats: Heated front and outer rear seats
- Seats: Height-adjustable front seats
- Skoda Infotainment Online
- Sunshade roller blind for the rear side windows
- Sunset
- Telephone: Convenient hands-free telephone system including phone box
- Lashing eyes in the trunk
- Storage compartment on the left wheel house
- front aero windshield wipers
- Airbag, driver and passenger
- Airbag, head airbags
- Allergen filter
- Traction control (ASR)
- Traveller Plus assistance system (DSG)
- Electrically adjustable and heated exterior mirrors with integrated side indicators
- Hydraulic brake assist (HBA)
- Headliner Gray
- Decorative inlay CLEVER
- diesel particulate filter
- Third brake light
- eCall
- Electronic parking brake including auto-hold function
- ESC Electronic Stabilization Control
- Electric windows front and rear
- Front radar assistant including city emergency braking function with person detection
- Transmission: 7-speed dual-clutch transmission (DSG)
- Illuminated glove compartment
- Kessy - keyless entry and start-stop system
- Climatronic air conditioning (2 zones)
- Headrests height adjustable front and rear
- LED matrix headlights and dynamic high beam assist (Light Assist)
- Steering wheel: Leather steering wheel with multifunction buttons including paddle shifters.
- Reading lights on the front roof lining
- Front center armrest, including storage compartment
- Engine drag torque control (MSR)
- Multi-collision brake
- Package: Family
- Parking sensors front & rear
- wheel house cover
- Radio accessories: 8 speakers
- Radio accessories: SmartLink
- Tire pressure monitoring
- Wheels: RunFlat tires with Seal technology
- Heated windshield washer nozzles, front
- Headlights washer / wiper system
- Kodiaq seat belts
- Seats: Adjustable lumbar supports in the front seats
- Skoda Care Connect
- Sun visor on driver and passenger side with illuminated vanity mirror
- Tablet holder in the rear
- Front door sill trims



- Central locking with radio remote control

- Variable fastening concept in the trunk
- Immobiliser

Extra equipment

- Luggage net partition
- Electric panoramic sunroof including sunshade (no glasses compartment in the headliner)
- Windscreen, wirelessly heated

- Paint finish: Metallic / Pearl effect
- Rear view camera
- Seats: Folding tables on the front seat backrests

Brief expert findings

Documents submitted	At the time of the inspection, the vehicle registration certificate Part 2 (title) was available, but the vehicle registration certificate Part 1 (document) was not. (Copy)
VIN comparison	The vehicle identification number (VIN) was read from the vehicle and its conformity with the submitted documents was verified during the inspection by the undersigned.
Inspection	The inspection conditions were sufficient for the assessment of the vehicle. Lifting equipment and a pit were available for examining the vehicle.
Test drive	No test drive/shunting maneuver was carried out during the inspection of the vehicle.
Engine function test	An engine test run was performed.
readiness to drive	The vehicle was roadworthy at the time of inspection.

Value reducing factors

No.	Component group	Description
1	Rear bumper	Rear bumper - Scratch(es) - Smart repair
2	Boot lid / rear door	Boot lid - Scratch(es) - Smart repair
3	Door - rear left side	Door (3) - dent(s) - Smart repair

Wear and tear

No.	Component group	Description
1	Front bumper	Front bumper - Scratch(es) - No deduction

The vehicle shows signs of wear commensurate with its age and use.

Missing parts

Description

Documents - Log book (Inkl. Bedienungsanleitung und Serviceheft)

Order/Scope of order

The order was placed to prepare a sales report for the vehicle described. This includes the following:

- Description of core relevant information about the vehicle
- Documentation of equipment features
(*Delivery by third-party service providers*)
- Documentation of damage, defects, missing parts
- Documentation of previous damage, unrepaired previous damage, repainting
- a brief visual or functional inspection of the equipment details if possible.
(*Functional tests of driver assistance systems are not included in the scope of services!*)
- a photo documentation of the vehicle



Basis for the order

This product is based on the Alphabet Fuhrpark GmbH guidelines for vehicle returns and valuations. The expert makes the explicit findings in each individual case objectively within the framework of the specified standards based on his or her own expertise.

The vehicle inspection takes place in a disassembled state.

Damage or defects that can only be detected during disassembly/diagnosis work or through advanced knowledge remain within the scope of the prognosis risk. An extended risk exists for concealed defects caused by fraudulent deception and not identifiable by the expert.

Damage or defects resulting from normal use or wear and tear of the vehicle will be accepted according to the applicable standard.

There was no explicit identification or monetary consideration of the expected features within the product.

Features which in their nature and severity slightly exceed normal use but do not constitute unacceptable damage will be documented and identified under signs of use if necessary.

Damage or defects that can no longer be attributed to normal use or wear and tear according to the underlying standard are listed in the product under value-reducing factors.

Depending on the product specification, a monetary ID can be provided. If this takes place, the costs can be 100% d or pro rata depending on the vehicle's age and mileage.

Previous damages

No apparent prior damage that had been repaired could be found on the vehicle.



Figure 1: Diagonal front (left)



Figure 2: Diagonal front (right)



Figure 3: Diagonal rear (left)



Figure 4: Diagonal rear (right)



Figure 5: Interior - front



Figure 6: Interior - rear



Figure 7: Instrument cluster



Figure 8: Instrument panel



Figure 9: Interior 360° view



Figure 10: Cargo area

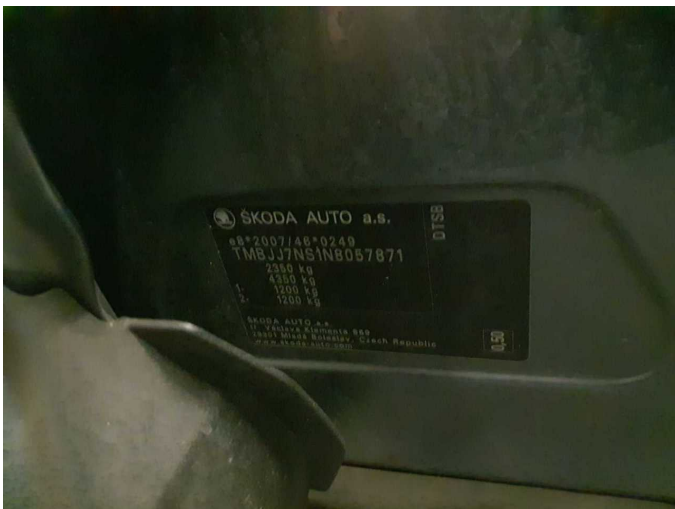


Figure 11: VIN



Figure 12: Mounted tyres

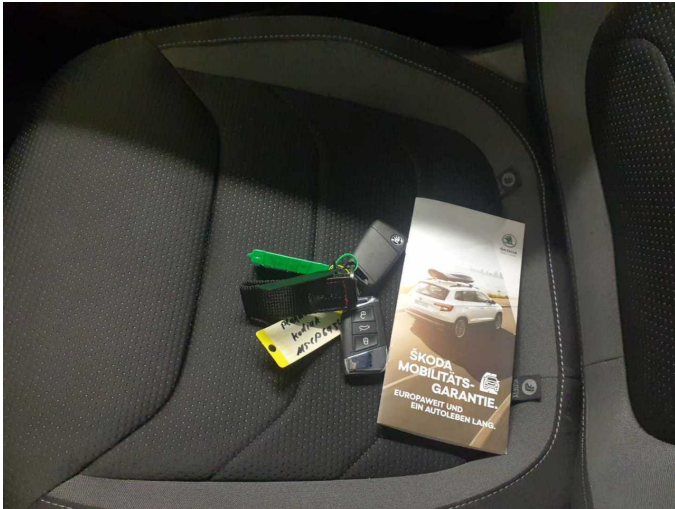


Figure 13: Documents



Figure 14: Additional tyres



Figure 15: Navigation



Figure 16: Misc.



Figure 17: Misc.



Figure 18: Misc.

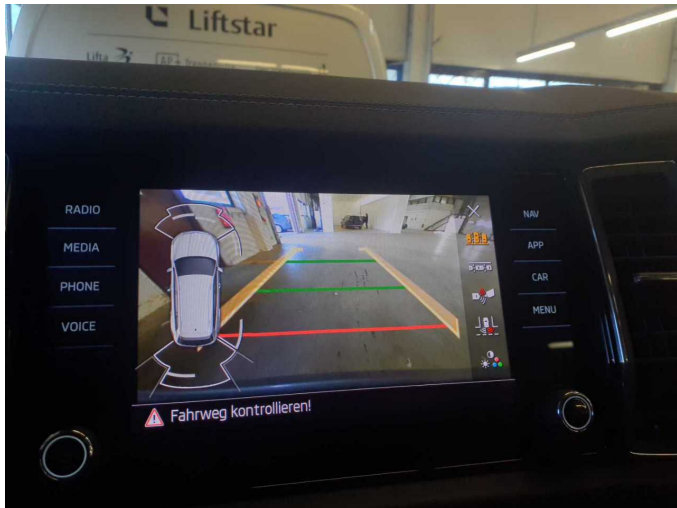


Figure 19: Misc.



Figure 20: Misc.

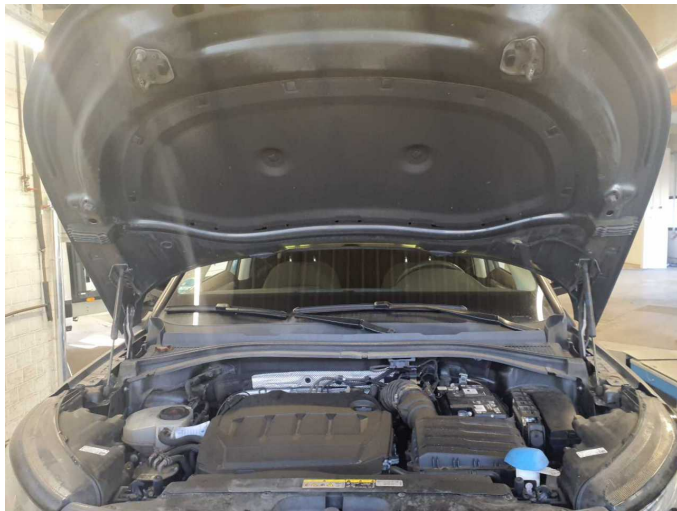


Figure 21: Misc.



Figure 22: Misc.



Figure 23: Misc.

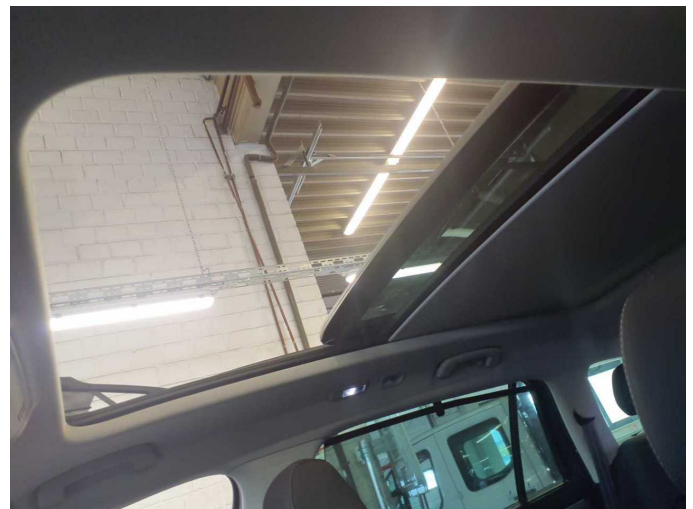


Figure 24: Misc.



Figure 25: Misc.



Figure 26: Misc.

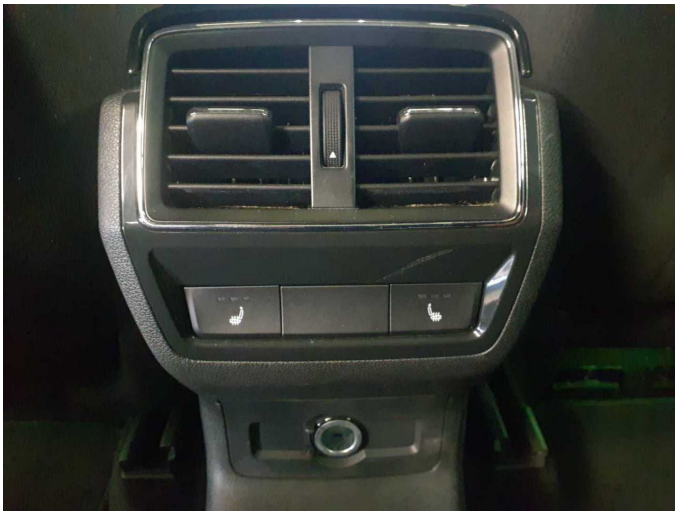


Figure 27: Misc.



Figure 28: Misc.

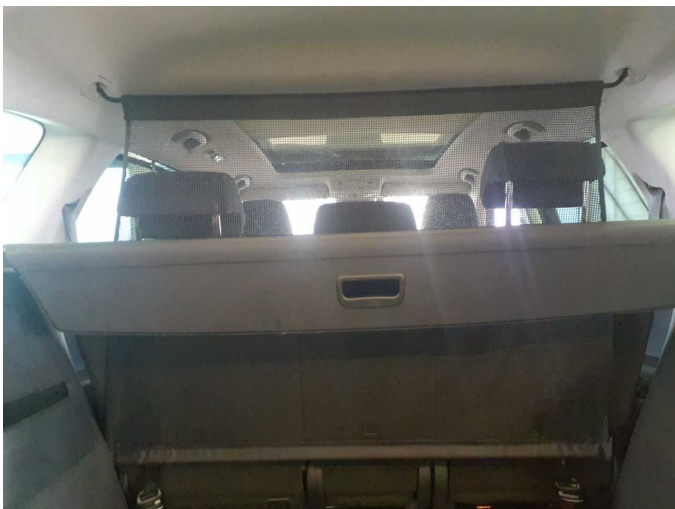


Figure 29: Misc.



Figure 30: Misc.



Figure 31: Misc.



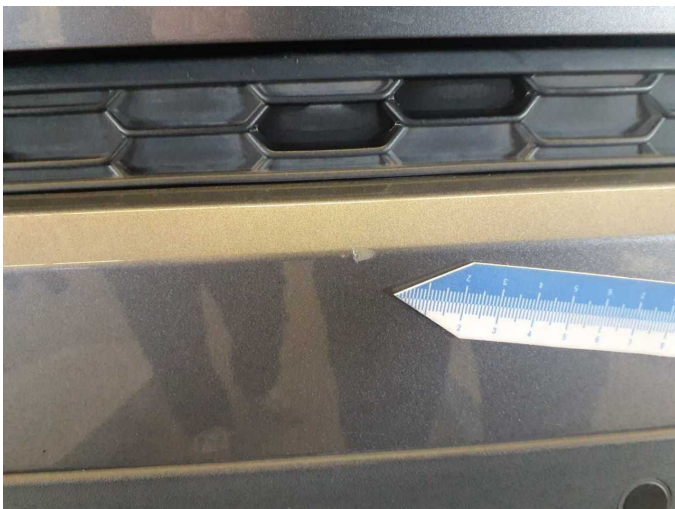
Figure 32: Misc.



Figure 33: Misc.



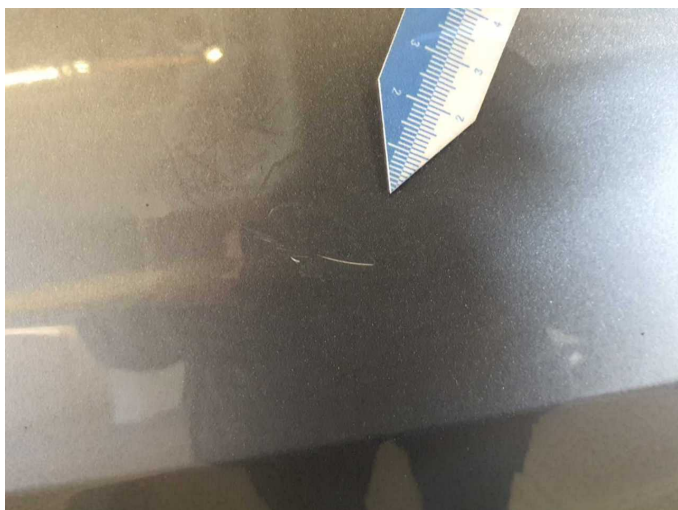
Damage 1: Rear bumper: Rear bumper - Scratch(es) - Smart repair



Damage 1: Rear bumper: Rear bumper - Scratch(es) - Smart repair



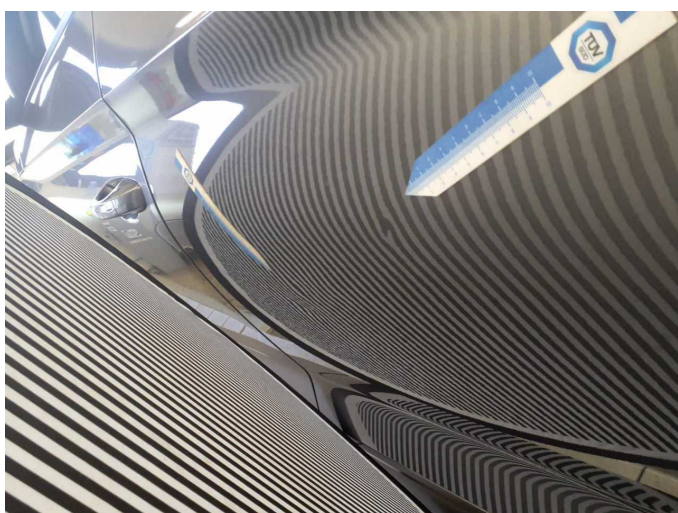
Damage 2: Boot lid / rear door: Boot lid - Scratch(es) - Smart repair



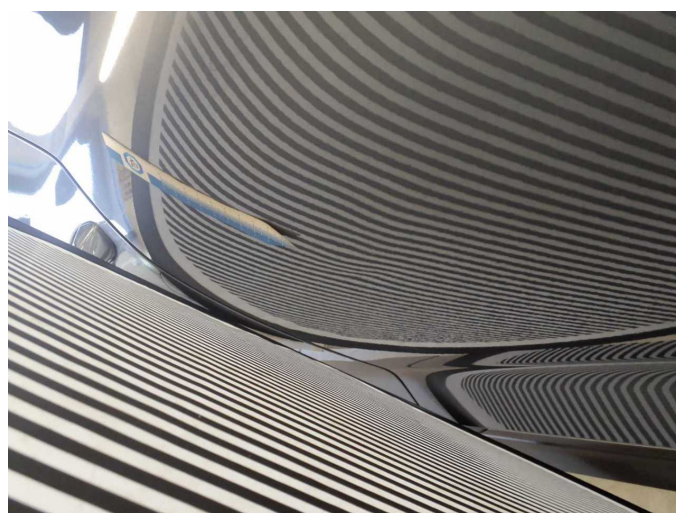
Damage 2: Boot lid / rear door: Boot lid - Scratch(es) - Smart repair



Damage 3: Door - rear left side: Door (3) - dent(s) - Smart repair



Damage 3: Door - rear left side: Door (3) - dent(s) - Smart repair



Damage 3: Door - rear left side: Door (3) - dent(s) - Smart repair



Wartungshistorie

(gemäß Auftraggeber Informationen)

Fahrgestellnummer: TMBJJ7NS1N8057871
Hersteller / Modell: SKODA SKODA Kodiaq 2.0 TDI DSG Clever

Datum	KM-Stand	Beschreibung
08.09.2025	155.485	Reparatur Sonstiges; Reparatur Sonstiges
25.07.2025	148.639	AU; AU; Motoröl b. Wartung; Ölfilter ern; Regelwartungsdienst; Wartung Sonstiges
08.01.2025	119.049	Bremse Sonstiges; Bremsklötze hinten; Bremsklötze vorne; Bremsscheiben hinten; Bremsscheiben vorne; Getriebeöl ern/prüfen; Motoröl b. Wartung; Ölfilter ern; Regelwartungsdienst; Wartung Sonstiges
29.05.2024	91.499	Bremsflüssigkeit; Bremsflüssigkeit ern; Kraftstofffilter ern; Luftfiltereinsatz ern; Motoröl b. Wartung; Ölfilter ern; Regelwartungsdienst; Systemtest/ Eigendiagnose; Wartung Sonstiges
04.10.2023	62.591	Bremse Sonstiges; Bremsklötze hinten; Bremsklötze vorne; Bremsscheiben hinten; Bremsscheiben vorne; Motoröl b. Wartung; Ölfilter ern; Regelwartungsdienst; Wartung Sonstiges
06.03.2023	31.079	Motoröl b. Wartung; Regelwartungsdienst