

## Expertise

Protocol number: 45458398  
Order No. / Reference: 26215678  
Inspection date: 11 May 2026

Manufacturer: Seat

Model: Ateca 2.0 TDI DSG FR

VIN: VSSZZ5F2P6536193



### Vehicle details

#### Manufacturer / Type / Model / Equipment

Seat Ateca 2.0 TDI DSG FR

**Vehicle Identification number** VSSZZ5F2P6536193

**Mileage (Read)** 149,298 km

**First registration** 8 Mar 2023

**Number of holders** 1

**Power / Engine displacement** 110 kw / 1,968 ccm

**Fuel type / Cylinder** Diesel / 4

**Gearbox / Number of gears** Automatic / 7

**Type of drive** Front drive

**Type of vehicle** Station wagon

**Colour / colour code** graphitgrau-metallic (F7C)

**Doors / Seats** 5 / 5

**Upholstery type** Alcantara / Leather

**Colour of upholstery** Black-Anthracite

**readiness to drive** Roadworthy



## Vehicle details

<b>Maintenance booklet / proof</b>	digital proof / complete	<b>Next maintenance in</b>	25,900 km
<b>Last service on / at</b>	07/2025 at 116,263 km		
<b>Key is / should be</b>	2 / 2	<b>FZG documents</b>	ZB#2 (B) was available (copy), ZB#1 (S) was not available.
		<b>Letter No.</b>	GQ488572
<b>Previous damage / Accident</b>	Detectable	<b>Repainting</b>	None detectable
<b>Inspection conditions</b>	sufficient	<b>Lifting equipment / pit</b>	yes
<b>Test drive</b>	Not performed	<b>Engine function test</b>	Performed
<b>readiness to drive</b>	Roadworthy		
<b>Manufacturer key number/ type code number</b>	7593 / AMQ 00392		
<b>Emission standard</b>	EURO6;WLTP;AP;PI/CI; M, N1 I	<b>fine dust sticker</b>	
<b>Permitted total weight</b>	2,030 kg	<b>Empty weight</b>	

## Tyres

### Mounted tyres

#	Tyre size	Type of tyre	Manufacturer	Tread depth
1)	215/50 R18 92V	Winter tyres on Light alloy	Continental	7mm / 7mm
2)	215/50 R18 92V	Winter tyres on Light alloy	Continental	8mm / 8mm

### Additional tyres

#	Tyre size	Type of tyre	Manufacturer	Tread depth
1)	215/50 R18 92W	Summer tyres (Without wheel rim)	Continental	5mm / 5mm
2)	215/50 R18 92W	Summer tyres (Without wheel rim)	Continental	7mm / 7mm

### Replacement

Typ	Tyre size	Type of tyre	Manufacturer	Tread depth
N	125/70 R18 99M	Summer tyres on Steel	Sonstige	5 mm

**Legend: Tread depth information for the left tire is listed first, for the right tire it is listed second on the axle in the direction of travel.**

## Equipment

### Standard equipment

- 12V socket at the front
- Storage compartment in the middle area of the lower dashboard
- Storage pocket on the back of the front seats
- Electrically adjustable, folding and heated exterior mirrors (turn signals integrated into exterior mirrors)
- Exterior mirror housings in Cosmo Grey
- Hill Start Assist (HHC)
- Chrome applications in the interior
- Diesel particulate filter and SCR catalyst
- Tachometer
- Third brake light, integrated into the tailgate
- Rear parking sensors
- Electronic Stability Control (ESC) (including Anti-lock Braking System (ABS) and Traction Control System (ASR))
- Gear recommendation display
- Cruise control system (CCS)
- LED taillights
- Rear spoiler in car color
- Body covers on the wheel arches
- Climatronic air conditioning system with electronic temperature control (separate temperature control for driver and front passenger)
- Center console with integrated storage compartment, center armrest, cup holders and rear air vents
- Package: LED interior lighting (consisting of LED technology for: - Ambient lighting (multicolor) in the door trim - Ambient light front - Glove compartment - Reading lights, 2 front / 2 rear - Footwell lighting - Luggage compartment lighting)
- Tire Pressure Monitoring System (TPMS)
- Wheels: Spare wheel as emergency wheel
- Rear view camera
- Rear seat backrest asymmetrically split and foldable
- paddle shifters on the steering wheel
- "FR" lettering on tailgate
- SEAT Drive Profile with "Driving Experience" button and progressive steering (driving profiles can be individually selected - selected driving profile influences steering assistance, throttle response and shift characteristics (with DSG))
- Seats: Lumbar support for driver and front passenger with height adjustment for front passenger seat
- LED daytime running lights
- Front Assist area monitoring system with City Emergency Braking function (If the distance to the vehicle in front decreases and the driver does not react, the Front Assist area monitoring system automatically brakes the vehicle. The City Emergency Braking function detects pedestrians on the road and automatically activates the brakes.)
- Storage compartment for sunglasses on the driver's side
- Storage compartment in the front doors
- Storage compartment under the driver's seat
- Airbags (driver and front passenger airbag (passenger airbag deactivation) - side airbag for driver and front passenger - head airbag system, front and rear - driver's side knee airbag)
- On-board computer
- Roof rails in black
- Electronic differential lock (XDS)
- Three-point automatic seat belts, front and rear, with belt tensioners (with warning buzzer for unfastened seat belts)
- Electronic parking brake including auto-hold function
- Electric windows front and rear (with anti-pinch protection and one-touch function at the front)
- Luggage compartment cover
- Transmission: 7-speed DSG automatic transmission
- Rear window wiper and rear window heater
- ISOFIX child seat restraint system (in the 2nd row, left and right, including top tether anchor points)
- Headrests, 2 front, 3 rear
- Steering wheel: Multifunction steering wheel in leather
- Armrest - centre, rear
- Fatigue detection
- Fog lights with cornering light function in LED technology
- Upholstery: Cloth
- Radio: Digital radio reception DAB+
- Radio: Media System Plus Style, Xperience, FR (Audio system with 8.25" color touchscreen - USB and Aux-in interface - 2 USB charging ports for the 2nd row of seats - Bluetooth interface with integrated hands-free system and audio streaming - 8 speakers - Multifunction display with multi-color screen in the instrument panel - Emergency call service)
- Keyless locking and starting system "Kessy"
- SEAT CONNECT (prepared for the use of mobile online services)
- Side windows from the 2nd row of seats and rear window are dark tinted.
- Electromechanical power steering
- Seats: Driver's seat with height adjustment
- Sport pedals in aluminum look
- Start-stop technology
- Front door sill trims in aluminum look, illuminated
- Lashing eyes in the luggage compartment
- Full LED headlights (low beam and high beam in LED technology - dynamic headlight range control)
- Electronic immobilizer
- Thermal insulation glazing
- Central locking, including tailgate, with remote control



### Extra equipment

- Swiveling towbar with electric release
- Heated and infrared-reflective windshield
- Electrically operated tailgate (opening & closing) EXPERIENCE,FR (incl.: - Sensor-controlled opening & closing (Virtual Pedal))
- Package: Dinamica (Seat center panel in Dinamica microfiber, black - Comfort seats front)
- Package: Driving Assistance Package XL for Navigation (Adaptive Cruise Control (ACC) up to 210 km/h with predictive speed control - High Beam Assist - Lane Keeping Assist - Traffic Sign Recognition - Side Assist - Travel Assist - Emergency Assist - Pre-Crash Assist)
- Package: Winter (multifunction leather steering wheel, heated - heated front seats)
- Park Assist with front and rear parking aid
- Wheels: 4 light alloy wheels "Performance IV Cosmo Grey", polished (7J x 18 with tires 215/50 R 18)
- Auxiliary heater including remote control
- Virtual Cockpit (Fully digital instrument cluster with 10.25" TFT display)
- Deletion of the lettering on the tailgate
- Luggage partition net
- Paint finish: Metallic
- Package: Business Package NAVIGATION (Navigation system with 9.2" color touchscreen, voice control - Full Link: Android Auto, Apple CarPlay - Wireless charger in the storage compartment of the center console - Spare wheel as emergency wheel)
- Package: Light and Sight (Automatic Coming Home and Leaving Home function - Automatically dimming interior mirror - Light sensor with automatic headlight control - Rain sensor)
- Panoramic glass sliding roof, electric, including sunshade blind.
- Radio accessories: BeatsAudio sound system (9 speakers - digital 12-channel amplifier - subwoofer - 340 watts total power)
- Variable luggage compartment floor with storage compartments in the luggage compartment

### Brief expert findings

Documents submitted	At the time of the inspection, the vehicle registration certificate Part 2 (title) was available, but the vehicle registration certificate Part 1 (document) was not. (Copy)
VIN comparison	The vehicle identification number (VIN) was read from the vehicle and its conformity with the submitted documents was confirmed by the undersigned during the inspection.
Inspection	The inspection conditions were sufficient for the assessment of the vehicle. Lifting equipment and/or a pit were available for examining the vehicle.
Test drive	No test drive/shunting maneuver was carried out during the inspection of the vehicle.
Engine function test	An engine test run was performed.
readiness to drive	The vehicle was roadworthy at the time of inspection.

### Value reducing factors

No.	Component group	Description
1	Bonnet	Bonnet - dent(s) - Smooth repair work
2	Side panel - rear right side	Side panel - dent(s) - Smart repair
3	Wheel / tyres	Alloy rim - front right side - Scratch(es) - Loss in value
4	Vehicle glazing	Windscreen - Broken / torn - Replace

### Wear and tear

No.	Component group	Description
1	Bonnet	Bonnet - Stone chips - No deduction
2	Front bumper	Front bumper - Stone chips - No deduction

The vehicle shows signs of wear and tear commensurate with its age and use.

### Missing parts

#### Description

Documents - Service book (Digitaler Ausdruck)



## Previous damages

No.	Previous damage	Extent of damage (Net)
1	Rear, Provided by user / customer, from 17 Oct 2024	5.138,17 €

## Order/Scope of Order

An order was placed to prepare a sales report for the described vehicle. This report includes the following:

- Description of key vehicle information
- Documentation of equipment features  
(*Delivery by third-party service providers*)
- Documentation of damage, defects, missing parts
- Documentation of prior damage, unrepaired prior damage, repainting
- A brief visual or functional inspection of the equipment details, if possible.  
(*Functional testing of driver assistance systems is not included in the scope of services!*)
- a photographic documentation of the vehicle

## Basis for the order

This product is based on the guidelines for vehicle returns and valuations published by Alphabet Fleet GmbH. The expert makes the specific findings in each individual case objectively, within the framework of the prescribed standards, based on their own expertise.

The vehicle inspection takes place in a fully assembled, unassembled state.

Damage or defects that can only be detected during disassembly/diagnostic work or through further investigation remain within the realm of prognostic risk. An increased risk exists due to concealed defects caused by fraudulent misrepresentation and which were not identifiable by the expert.

Damage or defects resulting from normal use or wear and tear of the vehicle will be accepted in accordance with the applicable standard.

There was no explicit identification or monetary consideration of the expected features within the product.

Features which, in their nature and extent, slightly exceed normal use but do not constitute unacceptable damage, will be documented and indicated as signs of wear, if applicable.

Damage or defects that, according to the applicable standard, can no longer be attributed to normal use or wear and tear are listed under "Value Reducing Factors" in the product description.

Depending on the product specification, a monetary ID can be provided. If this takes place, the costs can be 100% d or pro rata depending on the vehicle's age and mileage.

## Previous damages

According to available information previous damages were repaired at the vehicle. Traces of repairs, which allow conclusions about the area of repair, were not recognizable during the inspection.

## Comments

-Der montierte Winterradsatz ist kein Bestandteil des Auslieferungsumfangs.

-Felgen der Winterräder gehören zu den Sommerreifen



Figure 1: Diagonal front (left)



Figure 2: Diagonal front (right)



Figure 3: Diagonal rear (left)



Figure 4: Diagonal rear (right)



Figure 5: Interior - front



Figure 6: Interior - rear



Figure 7: Instrument cluster



Figure 8: Instrument panel



Figure 9: Interior 360° view



Figure 10: Cargo area

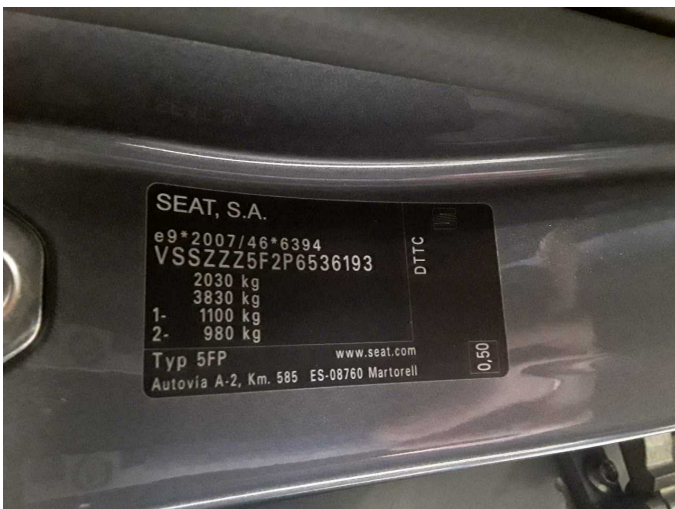


Figure 11: VIN



Figure 12: Mounted tyres



Figure 13: Documents

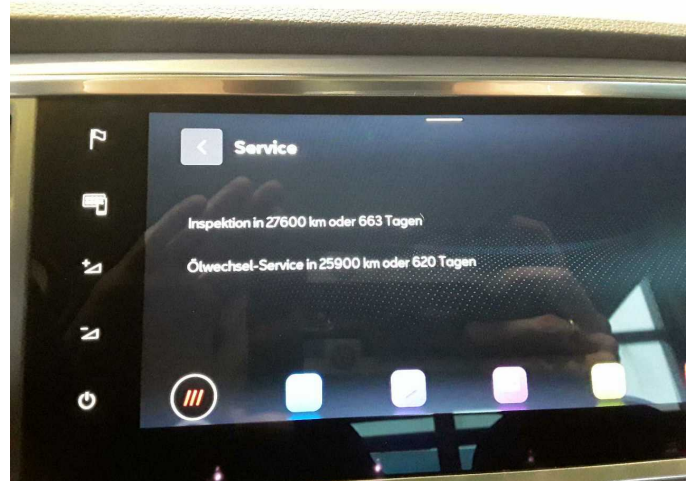


Figure 14: Documents



Figure 15: Documents



Figure 16: Additional tyres



Figure 17: Navigation



Figure 18: Misc.



Figure 19: Misc.



Figure 20: Misc.



Figure 21: Misc.



Figure 22: Misc.



Figure 23: Misc.



Figure 24: Misc.



Figure 25: Misc.



Figure 26: Misc.



Figure 27: Misc.

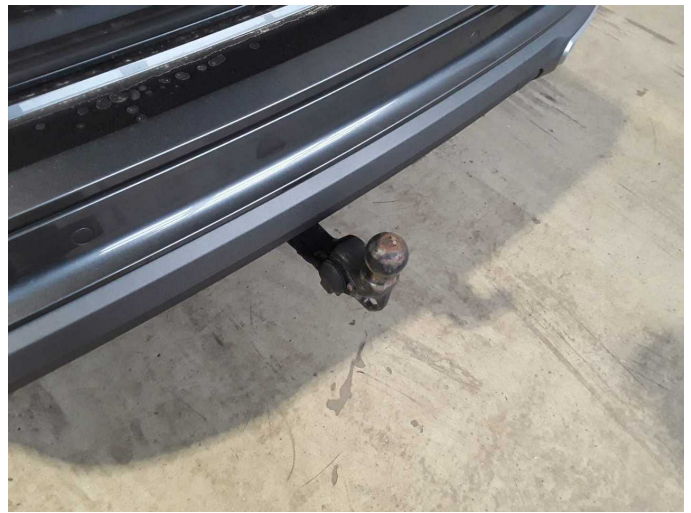


Figure 28: Misc.



Damage 1: Bonnet: Bonnet - dent(s) - Smooth repair work



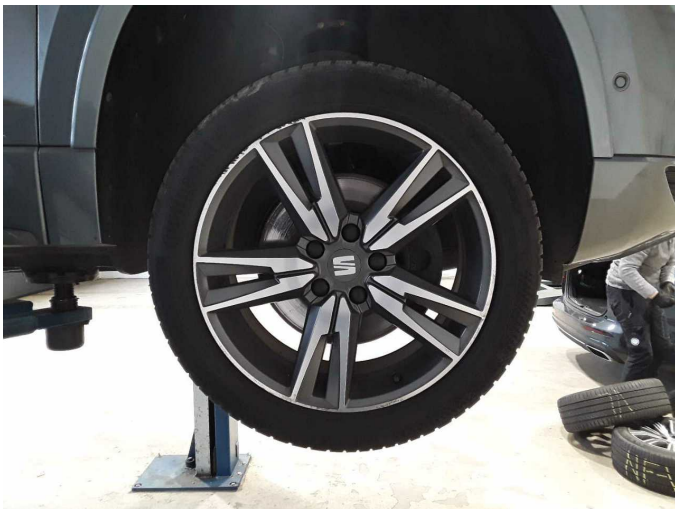
Damage 1: Bonnet: Bonnet - dent(s) - Smooth repair work



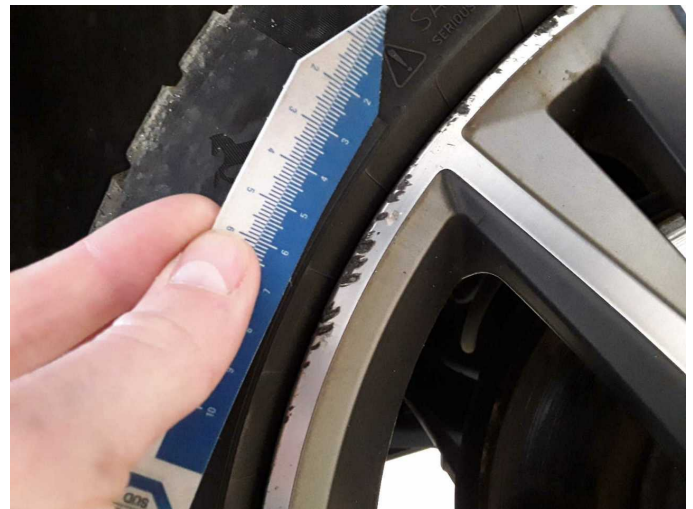
**Damage 2:** Side panel - rear right side: Side panel - dent(s) - Smart repair



**Damage 2:** Side panel - rear right side: Side panel - dent(s) - Smart repair



**Damage 3:** Wheel / tyres: Alloy rim - front right side - Scratch(es) - Loss in value



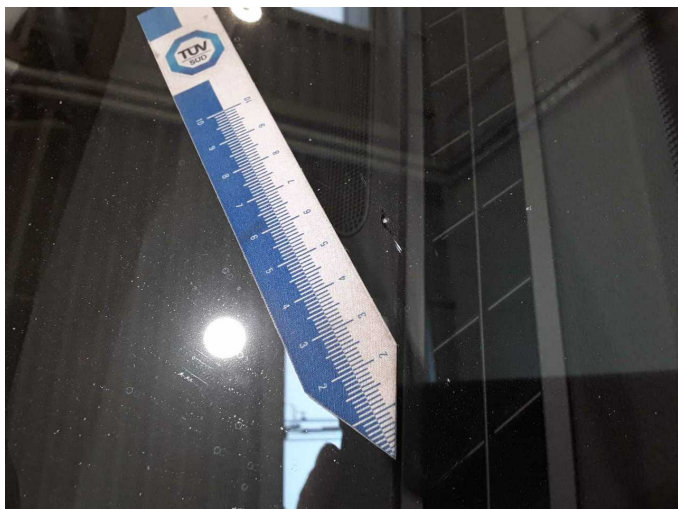
**Damage 3:** Wheel / tyres: Alloy rim - front right side - Scratch(es) - Loss in value



**Damage 3:** Wheel / tyres: Alloy rim - front right side - Scratch(es) - Loss in value



**Damage 4:** Vehicle glazing: Windscreen - Broken / torn - Replace



**Damage 4:** Vehicle glazing: Windscreen - Broken / torn - Replace



# Wartungshistorie

(gemäß Auftraggeber Informationen)

Fahrgestellnummer: VSSZZZ5F2P6536193

Hersteller / Modell: SEAT SEAT Ateca 2.0 TDI DSG FR

Datum	KM-Stand	Beschreibung
08.07.2025	116.263	Bremse Sonstiges; Bremsklötze hinten; Bremsklötze vorne; Bremsscheiben + Klötze h; Bremsscheiben + Klötze v; Bremsscheiben hinten; Bremsscheiben vorne; Getriebeöl ern/prüfen; Keilrippenriemen; Motoröl b. Wartung; Ölfilter ern; Regelwartungsdienst; Reparatur Sonstiges; Wartung Sonstiges; Zahnriemen/Steuerkett ern
06.02.2025	87.533	Bremsflüssigkeit; Bremsflüssigkeit ern; Kraftstofffilter ern; Luftfiltereinsatz ern; Motoröl b. Wartung; Ölfilter ern; Regelwartungsdienst; Systemtest/Eigendiagnose; Wartung Sonstiges
25.04.2024	58.398	Motoröl b. Wartung; Ölfilter ern; Regelwartungsdienst; Wartung Sonstiges
13.09.2023	29.973	Motoröl b. Wartung; Ölfilter ern; Regelwartungsdienst; Wartung Sonstiges
06.07.2023	19.500	Systemtest/Eigendiagnose