

Expertise

Protocol number: 45803168
Order No. / Reference: 26410868
Inspection date: 1 Jun 2026

Manufacturer: Volkswagen

Model: Passat Variant 1.4 TSI Plug-In-Hybrid DSG GTE

VIN: WVVZZZ3CZME133067



Vehicle details

Manufacturer / Type / Model / Equipment

Volkswagen Passat Variant 1.4 TSI Plug-In-Hybrid DSG GTE

Vehicle Identification number WVVZZZ3CZME133067

Mileage (Read) 148,772 km

First registration 9 Jul 2021

Number of holders 1

Power / Engine displacement 115 kw / 1,395 ccm

Fuel type / Cylinder Hybr.B/E ext.auf1 / 4

Gearbox / Number of gears Automatic / 6

Type of drive Front drive

Type of vehicle Station wagon

Colour / colour code uranograu (I7F)

Doors / Seats 5 / 5

Upholstery type Cloth

Colour of upholstery Black-Anthracite



Vehicle details

Maintenance booklet / proof	digital proof / complete	Next maintenance in	4,200 km
Last service on / at	09/2025 at 137,967 km		
Key is / should be	2 / 2	FZG documents	ZB#2 (B) was available (copy), ZB#1 (S) was not available.
		Letter No.	GC353438
Previous damage / Accident	Detectable	Repainting	Detectable
Inspection conditions	sufficient	Lifting equipment / pit	yes
Test drive	Not performed	Engine function test	Performed
Manufacturer key number/ type code number	0603 / BRZ 00077		
Emission standard	EURO6;WLTP;AP;PI/CI; M, N1 I	fine dust sticker	
Permitted total weight	2,270 kg	Empty weight	

Tyres

Mounted tyres

#	Tyre size	Type of tyre	Manufacturer	Tread depth
1)	215/55 R17 94H	Winter tyres on Light alloy	Pirelli	4mm / 4mm
2)	215/55 R17 94H	Winter tyres on Light alloy	Pirelli	4mm / 4mm

Additional tyres

#	Tyre size	Type of tyre	Manufacturer	Tread depth
1)	215/55 R17 94V	Summer tyres on Light alloy	Continental	3mm / 3mm
2)	215/55 R17 94V	Summer tyres on Light alloy	Continental	4mm / 4mm

Legend: Tread depth information for the left tire is listed first, for the right tire it is listed second on the axle in the direction of travel.



Equipment

Standard equipment

- First aid kit, warning triangle and high-visibility vest
- Electronic immobilizer
- Airbag for driver and front passenger
- Anti-lock braking system (ABS)
- Adaptive Cruise Control (ACC) "stop & go", including speed limiter
- Cup holders (2) front
- third brake light
- Headliner in Mistral Grey
- Tachometer
- Parking aid - warning signals for obstacles in the front and rear area
- Automatic headlight control
- Windscreen made of laminated safety glass, heat and sound insulating
- Transmission: 6-speed DSG
- Interior mirror automatically dimming
- Air conditioning system "Air Care Climatronic" with 3-zone temperature control and allergen filter
- Paint finish: Solid
- LED headlights with daytime running lights
- Headlight range control
- Front center armrest, height and length adjustable, with storage box
- Navigation system "Discover Media" incl. "Streaming & Internet"
- Non-smoking version
- Emergency call service
- Package: Light and Sight Package "Plus"
- Proactive occupant protection system in conjunction with "Front Assist"
- Wheels: 4 "Montpellier" alloy wheels 7 J x 17
- Keyless start system without safe locking
- Power steering
- Seats: Comfort seats in the front
- Seats: Front seats are height-adjustable
- Start-stop system
- Bumpers in body color
- Textile floor mats
- Warning tone and light for unfastened seat belts front and rear
- Airbag, head airbag system for front and rear passengers
- App-Connect Wireless
- Electrically adjustable and heated exterior mirrors, ambient lighting
- Hill start assist
- Chrome trim on the side windows
- black roof rails
- e-Sound
- Entry/warning lights in LED technology in the front doors
- Electronic parking brake including auto-hold function
- Remote release for luggage compartment lid
- Pedestrian detection
- Adjustable luggage compartment floor
- Interior lights with delayed shut-off and dimming function
- ISOFIX mounting points
- Rear headrests (3)
- Front headrests
- LED taillights
- Steering wheel: Multifunction sports steering wheel in leather, with paddle shifters
- "Premium" multifunction display with multicolor screen
- Fatigue detection
- Mains charging cable for household socket
- Mesh partition
- Emergency braking assistant "Front Assist" (for automatic distance control ACC up to 210 km/h)
- Upholstery: Fabric "Weave"
- Radio accessories: Digital radio reception DAB+
- Tire pressure monitoring system (passive)
- Rear bench seat, undivided, backrest asymmetrically split and foldable, with center armrest
- Seat belts: Three-point automatic seat belt
- Seats: Lumbar support in the front
- Lane keeping assistant "Lane Assist"
- 12V power outlet on the rear of the center console
- Telephone interface



Extra equipment

- "Comfort" telephone interface with inductive charging function (hands-free system)
- Driver assistance package incl. "Emerg." in conjunction with BP PQU
- High beam control "Light Assist" (automatically switches on the high beam in darkness from 65 km/h - detects vehicles ahead and oncoming vehicles and automatically dims the headlights before they are blinded)
- Luggage net
- Rear side windows and rear window tinted
- Retrofitted towbar
- Voice control
- Wheels: Tire Mobility Set omitted
- Exterior mirrors with ambient lighting and passenger-side mirror lowering function (foldable and heated - dimming on the driver's side)
- Package: "Business Premium" package incl. navigation (from Business trim level) (2 USB-C ports in the front, 1 USB-C charging port in the rear, 230V socket, App-Connect incl. wireless, Apple CarPlay, Android Auto, "Travel Assist" driver assistance system and "Lane Assist" lane keeping system, Air Care Climatronic with 3-zone temperature control, allergen filter and rear controls, lumbar support in the front, electric on the driver's side, massage function on the driver's side, "Rear View" reversing camera, heated windshield washer nozzles, Comfort telephone interface, inductive charging function, heated front seats)
- Removable luggage compartment protective mat (back of the rear seat backrest with black rubber coating)

Brief expert findings

Documents submitted	At the time of the inspection, the vehicle registration certificate Part 2 (title) was available, but the vehicle registration certificate Part 1 (document) was not. (Copy)
VIN comparison	The vehicle identification number (VIN) was read from the vehicle and its conformity with the submitted documents was confirmed by the undersigned during the inspection.
Inspection	The inspection conditions were sufficient for the assessment of the vehicle. Lifting equipment and/or a pit were available for examining the vehicle.
Test drive	No test drive/shunting maneuver was carried out during the inspection of the vehicle.
Engine function test	An engine test run was performed.

Value reducing factors

No.	Component group	Description
1	2nd wheel set	2 tyres (Flanke Sommerreifen) - Damaged - Replace
2	2nd wheel set	2 alloy rims - Scratch(es) - Loss in value
3	Door - front left side	Door - Dent / paintcoat damage - Paint
4	Front bumper	Front bumper (+ Zierleiste rechts erneuern) - Scratch(es) - Paint

Wear and tear

No.	Component group	Description
1	Misc.	Main inspection - No evidence - No deduction
2	Roof	Roof - dent(s) - No deduction
3	Boot lid / rear door	Boot lid - dent(s) - No deduction
4	Bonnet	Bonnet - dent(s) - No deduction

The vehicle shows signs of wear and tear commensurate with its age and use.

Previous damages

No.	Previous damage	Extent of damage (Net)
1	Side right, Professionally repaired, Invoice of repair done Non-existent, from 13 Feb 2025	1.193,82 €
2	Rear, Provided by user / customer, from 11 Mar 2026	2.966,67 €



Repainting

No. Repainting

- 1 Side panel - rear left side, Professionally carried out, Invoice of repair done Non-existent
- 2 Side panel - rear right side, Professionally carried out, Invoice of repair done Non-existent

Paint coat thickness measurement

Side panel - rear left side	170 µm	Side panel - rear right side	185 µm
-----------------------------	--------	------------------------------	--------

Order/Scope of Order

An order was placed to prepare a sales report for the described vehicle. This report includes the following:

- Description of key vehicle information
- Documentation of equipment features
(*Delivery by third-party service providers*)
- Documentation of damage, defects, missing parts
- Documentation of prior damage, unrepaired prior damage, repainting
- A brief visual or functional inspection of the equipment details, if possible.
(*Functional testing of driver assistance systems is not included in the scope of services!*)
- a photographic documentation of the vehicle

Basis for the order

This product is based on the guidelines for vehicle returns and valuations published by Alphabet Fleet GmbH. The expert makes the specific findings in each individual case objectively, within the framework of the prescribed standards, based on their own expertise.

The vehicle inspection takes place in a fully assembled, unassembled state.

Damage or defects that can only be detected during disassembly/diagnostic work or through further investigation remain within the realm of prognostic risk. An increased risk exists due to concealed defects caused by fraudulent misrepresentation and which were not identifiable by the expert.

Damage or defects resulting from normal use or wear and tear of the vehicle will be accepted in accordance with the applicable standard.

There was no explicit identification or monetary consideration of the expected features within the product.

Features which, in their nature and extent, slightly exceed normal use but do not constitute unacceptable damage, will be documented and indicated as signs of wear, if applicable.

Damage or defects that, according to the applicable standard, can no longer be attributed to normal use or wear and tear are listed under "Value Reducing Factors" in the product description.

Depending on the product specification, a monetary ID can be provided. If this takes place, the costs can be 100% d or pro rata depending on the vehicle's age and mileage.

Previous damages

Professionally repaired previous damages were found at the vehicle.

Comments

Der montierte Winterradsatz ist kein Bestandteil der Ausstattung.



Figure 1: Diagonal front (left)



Figure 2: Diagonal front (right)



Figure 3: Diagonal rear (left)



Figure 4: Diagonal rear (right)

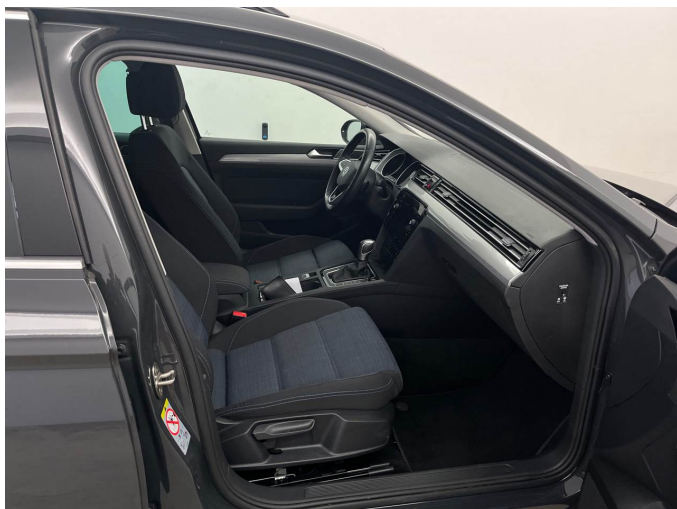


Figure 5: Interior - front



Figure 6: Interior - rear



Figure 7: Instrument cluster



Figure 8: Instrument panel



Figure 9: Interior 360° view



Figure 10: Cargo area

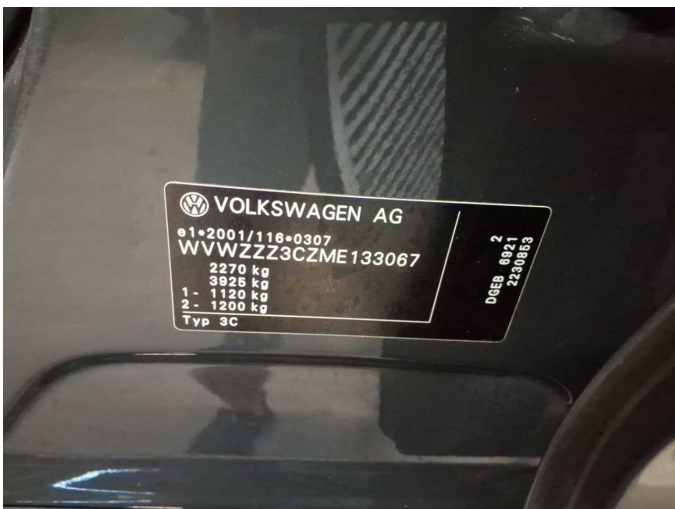


Figure 11: VIN



Figure 12: Mounted tyres



Figure 13: Documents



Figure 14: Additional tyres



Figure 15: Navigation



Figure 16: Misc.



Figure 17: Misc.



Figure 18: Misc.



Figure 19: Misc.



Figure 20: Misc.



Figure 21: Misc.

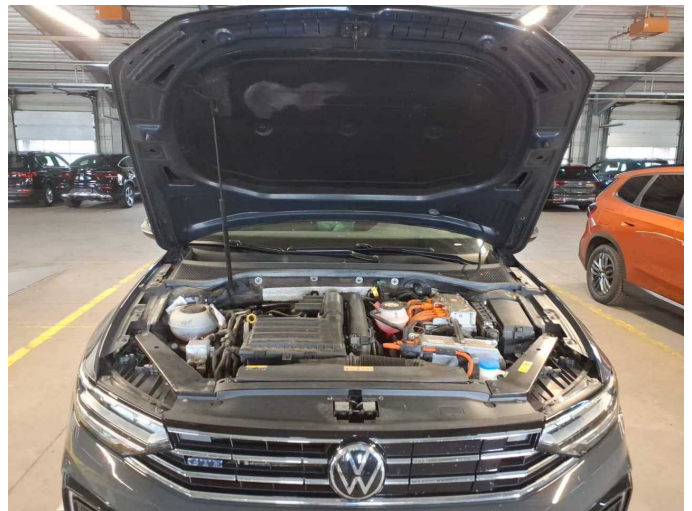


Figure 22: Misc.



Figure 23: Misc.



Figure 24: Misc.



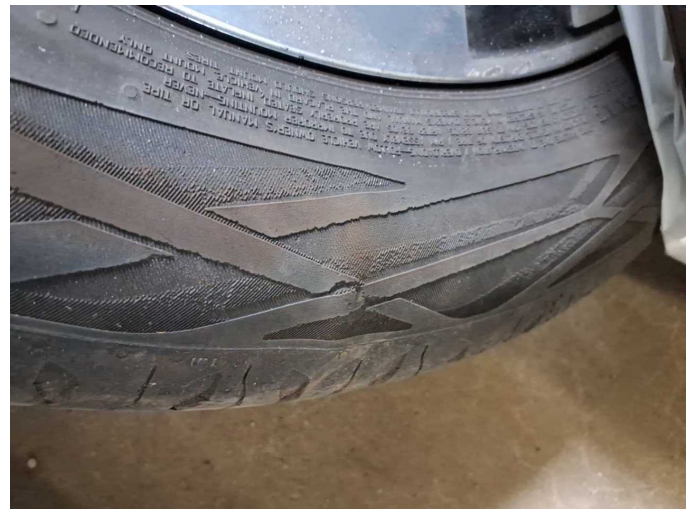
Damage 1: 2nd wheel set: 2 tyres (Flanke Sommerreifen) - Damaged - Replace



Damage 1: 2nd wheel set: 2 tyres (Flanke Sommerreifen) - Damaged - Replace



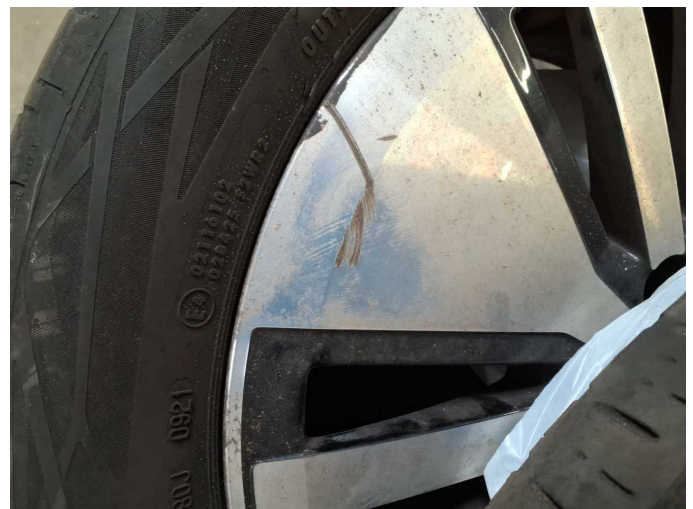
Damage 1: 2nd wheel set: 2 tyres (Flanke Sommerreifen) - Damaged - Replace



Damage 1: 2nd wheel set: 2 tyres (Flanke Sommerreifen) - Damaged - Replace



Damage 2: 2nd wheel set: 2 alloy rims - Scratch(es) - Loss in value



Damage 2: 2nd wheel set: 2 alloy rims - Scratch(es) - Loss in value



Damage 2: 2nd wheel set: 2 alloy rims - Scratch(es) - Loss in value



Damage 2: 2nd wheel set: 2 alloy rims - Scratch(es) - Loss in value



Damage 3: Door - front left side: Door - Dent / paintcoat damage - Paint



Damage 3: Door - front left side: Door - Dent / paintcoat damage - Paint



Damage 3: Door - front left side: Door - Dent / paintcoat damage - Paint



Damage 3: Door - front left side: Door - Dent / paintcoat damage - Paint



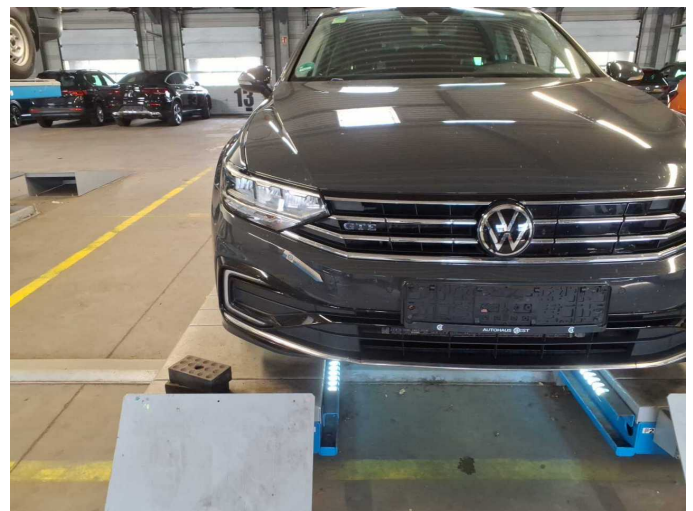
Damage 3: Door - front left side: Door - Dent / paintcoat damage - Paint



Damage 3: Door - front left side: Door - Dent / paintcoat damage - Paint



Damage 3: Door - front left side: Door - Dent / paintcoat damage - Paint



Damage 4: Front bumper: Front bumper (+ Zierleiste rechts erneuern) - Scratch(es) - Paint



Damage 4: Front bumper: Front bumper (+ Zierleiste rechts erneuern) - Scratch(es) - Paint



Damage 4: Front bumper: Front bumper (+ Zierleiste rechts erneuern) - Scratch(es) - Paint



Damage 4: Front bumper: Front bumper (+ Zierleiste rechts erneuern) - Scratch(es) - Paint



Damage 4: Front bumper: Front bumper (+ Zierleiste rechts erneuern) - Scratch(es) - Paint



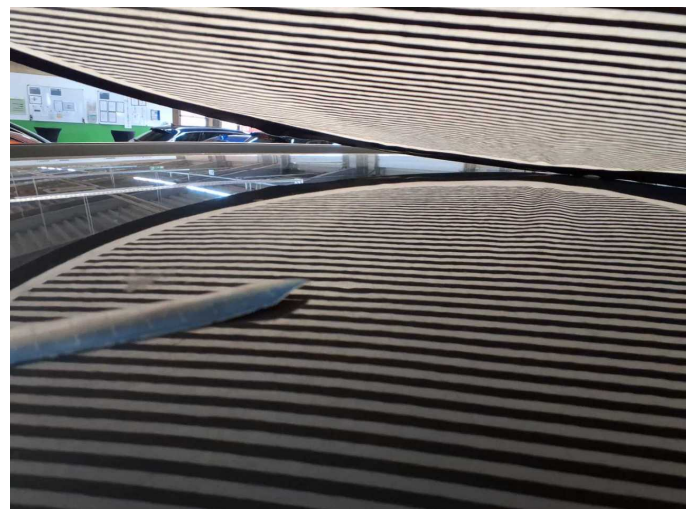
Damage 4: Front bumper: Front bumper (+ Zierleiste rechts erneuern) - Scratch(es) - Paint



Damage 4: Front bumper: Front bumper (+ Zierleiste rechts erneuern) - Scratch(es) - Paint



Wear and tear 2: Roof: Roof - dent(s) - No deduction



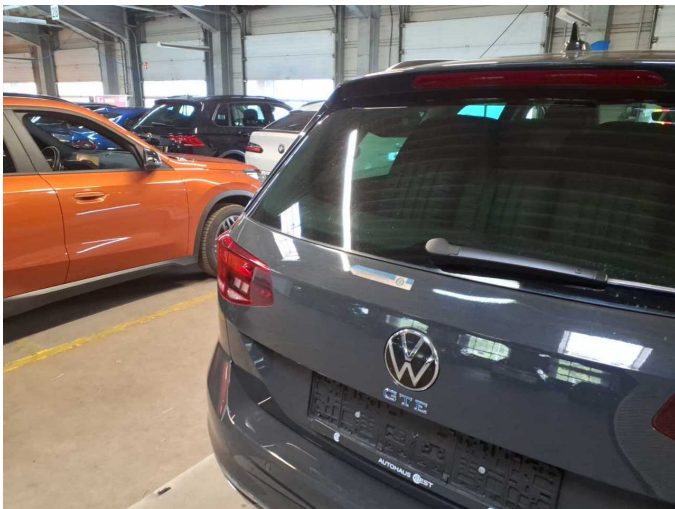
Wear and tear 2: Roof: Roof - dent(s) - No deduction



Wear and tear 3: Boot lid / rear door: Boot lid - dent(s) - No deduction



Wear and tear 3: Boot lid / rear door: Boot lid - dent(s) - No deduction



Wear and tear 3: Boot lid / rear door: Boot lid - dent(s) - No deduction



Wear and tear 3: Boot lid / rear door: Boot lid - dent(s) - No deduction



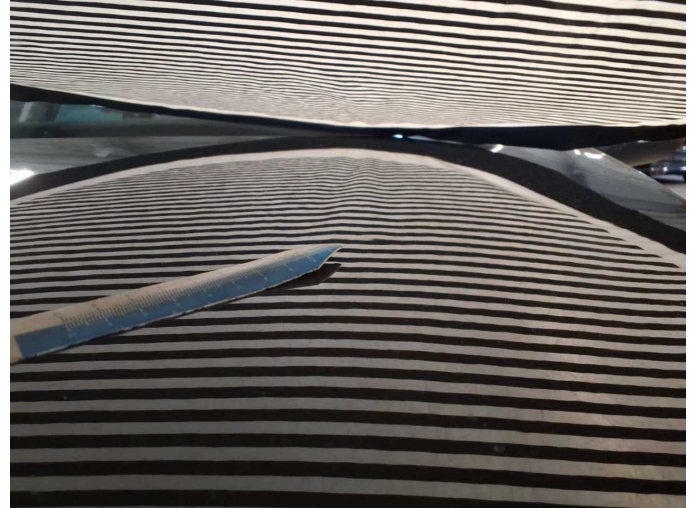
Wear and tear 4: Bonnet: Bonnet - dent(s) - No deduction



Wear and tear 4: Bonnet: Bonnet - dent(s) - No deduction



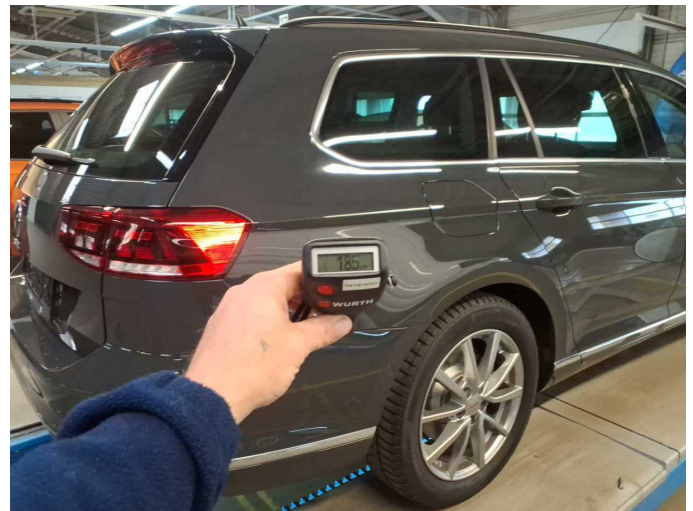
Wear and tear 4: Bonnet: Bonnet - dent(s) - No deduction



Wear and tear 4: Bonnet: Bonnet - dent(s) - No deduction



Repainting 1: Side panel - rear left side



Repainting 2: Side panel - rear right side



Wartungshistorie

(gemäß Auftraggeber Informationen)

Fahrgestellnummer: WVWZZZ3CZME133067
Hersteller / Modell: VOLKSWAGEN VW Passat Variant 1.4 TSI Plug-In-Hybrid DSG
GTE

Datum	KM-Stand	Beschreibung
16.04.2026	147.975	Bremse Sonstiges; Bremsklötze hinten; Bremsklötze vorne; Bremsscheiben + Klötze h; Bremsscheiben + Klötze v; Bremsscheiben hinten; Bremsscheiben vorne
11.03.2026	146.480	Batterie ern; Reparatur Sonstiges; Systemtest/Eigendiagnose
04.09.2025	137.967	Bremsflüssigkeit; Bremsflüssigkeit ern; Motoröl b. Wartung; Ölfilter ern; Ölwechsel; Wartung Sonstiges
10.03.2025	124.610	Getriebeöl ern/prüfen; Motoröl b. Wartung; Ölfilter ern; Regelwartungsdienst; Wartung Sonstiges; Zündkerzen ern
30.08.2024	110.043	Systemtest/Eigendiagnose
28.08.2024	110.042	Bremse Sonstiges; Bremsklötze hinten; Bremsklötze vorne; HU + AU; Luftfiltereinsatz ern; Motoröl b. Wartung; Ölfilter ern; Ölwechsel; Wartung Sonstiges
22.04.2024	93.649	Motoröl b. Wartung; Ölfilter ern; Regelwartungsdienst; Wartung Sonstiges
18.10.2023	76.170	Bremse Sonstiges; Bremsklötze hinten; Bremsklötze vorne; Bremsscheiben hinten; Bremsscheiben vorne; Motoröl b. Wartung; Ölfilter ern; Ölwechsel; Wartung Sonstiges
13.06.2023	62.040	Bremsflüssigkeit; Bremsflüssigkeit ern; Getriebeöl ern/prüfen; Motoröl b. Wartung; Ölfilter ern; Regelwartungsdienst; Wartung Sonstiges; Zündkerzen ern
05.12.2022	43.535	Motoröl b. Wartung; Ölfilter ern; Ölwechsel; Wartung Sonstiges
17.08.2022	29.456	Motoröl b. Wartung; Ölfilter ern; Regelwartungsdienst; Wartung Sonstiges
29.03.2022	15.187	Motoröl b. Wartung; Ölfilter ern; Ölwechsel; Wartung Sonstiges