

Expertise

Protocol number: 45751095
Order No. / Reference: 26510333
Inspection date: 2 Jun 2026

Manufacturer: Volkswagen

Model: Crafter 35 TDI MR HA

VIN: WV1ZZZSY1S9043951



Vehicle details

Manufacturer / Type / Model / Equipment

Volkswagen Crafter 35 TDI MR HA

Vehicle Identification number WV1ZZZSY1S9043951

Mileage (Read) 9,947 km

First registration 24 Apr 2025

Number of holders 1

Power / Engine displacement 120 kw / 1,968 ccm

Fuel type / Cylinder Diesel / 4

Gearbox / Number of gears Manual / 6

Type of drive Rear drive

Type of vehicle Van

Colour / colour code Candy White (B9A)

Doors / Seats 4 / 2

Upholstery type Cloth

Colour of upholstery Black-Anthracite

Vehicle with smoke odor no



Vehicle details

Maintenance booklet / proof	Non-existent	Next maintenance in	337 Tag(e)
Key is / should be	2 / 4	FZG documents	ZB#2 (B) was available (copy), ZB#1 (S) was not available.
		Letter No.	HJ662600
Previous damage / Accident	None detectable	Repainting	None detectable
Inspection conditions	sufficient	Lifting equipment / pit	No
Test drive	short drive on the company premises	Engine function test	Performed
Manufacturer key number/ type code number	0603 / CRL 03883		
Emission standard	EUROVI; E; M, N	fine dust sticker	
Permitted total weight	3,500 kg	Empty weight	

Tyres

Mounted tyres

#	Tyre size	Type of tyre	Manufacturer	Tread depth
1)	235/65 R16 121R	Winter tyres on Steel rim with wheel cover	Bridgestone	9mm / 9mm
2)	235/65 R16 121R	Winter tyres on Steel rim with wheel cover	Bridgestone	8mm / 8mm

Additional tyres

#	Tyre size	Type of tyre	Manufacturer	Tread depth
1)	235/65 R16 115R	Summer tyres on Steel	Sonstige	6mm / 6mm
2)	235/65 R16 115R	Summer tyres on Steel	Sonstige	7mm / 7mm

Replacement

Typ	Tyre size	Type of tyre	Manufacturer	Tread depth
E	235/65 R16 115R C	Summer tyres on Steel	Sonstige	7 mm

Legend: Tread depth information for the left tire is listed first, for the right tire it is listed second on the axle in the direction of travel.

TÜV SÜD Auto Partner GmbH
Wiesenring 2
04159 Leipzig

Inspection location
ARS Altmann AG Niederlassung
Wolnzach
Feierabendmühle 2
85283 Wolnzach



Equipment



Standard equipment

- Storage compartments: Glove compartment
- Distraction and fatigue detection
- Towing eye at the front
- Convex exterior mirrors (left and right), with integrated LED turn signal and wide-angle range
- Hill Start Assist
- third brake light
- Three-point automatic seat belts
- Entry/grab handles (in the cargo area)
- Deletion: Without side panels
- Deletion: Side window opening in the rear right cargo area
- Deletion: Side window opening in the cargo area, front right
- Chassis: Front disc brakes, 16" (diameter 303 mm)
- Electric windows, front
- Front Assist with warning and braking for vehicles, pedestrians and cyclists
- Total weight: Permissible total weight 3500 kg
- Speed limiter: Without speed limiter
- Halogen dual headlights
- Rear-wheel drive, single tires
- Rear wing door without window cutout
- Heating and ventilation system in the driver's cab
- Instrument usage (km/h)
- Headrests (2)
- Fuel tank with a 75-liter tank capacity
- Cargo area lighting: 4 LED spotlights
- Steering wheel: Multifunction steering wheel
- Multifunctional display: Digital Cockpit Pro
- eCall emergency call system
- Without turn assist
- Without electrical terminal block and without function control unit
- Particulate filter: Soot particle filter for diesel engines
- Wheel cover center
- Radio: Infotainment system with 26 cm color touchscreen
- Radio accessories: 4 speakers - 2 tweeters, 2 woofers
- Wheels, tires: Summer tires
- Wheels/Tires: Tire pressure monitoring system (direct measuring)
- Wheels: Tire Mobility Set
- Sliding door in the passenger/cargo area: Without sliding door on the left, in the cargo/passenger area
- Keys for locking system: 2 remote control flip keys
- Crosswind assist
- Seatbelt check
- Seats 1st row: Seat on the right
- Lane keeping assistant "Lane Assist"
- Power outlet: 12V socket and 4 cup holders in the dashboard
- Front bumper in grey
- Partition walls: Partition wall
- Doors: Cab doors
- Storage package 2: Roof gallery with two 1-DIN slots and reading light
- Airbag for driver and front passenger
- Exterior mirrors, adjustable from the outside
- Reinforced battery (70 Ah/ 420 A)
- Floor coverings: Rubber floor covering in the driver's cab
- Three-phase generator 180 A
- Parking assistance in the front and rear areas
- Electronic Stability Program and ABS, ASR, EDS, SWA
- Deletion: Side window opening in the rear left cargo area
- Deletion: Side window opening in the cargo area, front left
- Chassis: Suspension and damping, standard
- Windows: Laminated glass front pane in heat-insulating glazing
- Warranty: 5-year manufacturer's warranty for Germany
- Total weight: Vehicle registration with a permissible total weight of 3.5 t
- Transmission: 6-speed transmission
- Grab handle on the partition wall in the cargo/passenger compartment
- Rear doors/tailgate: Hinges for rear doors
- High roof, painted exterior in car color
- Instrument panel: Switch panel
- Fuel fill quantity, standard fuel initial fill
- Radiator guard, unpainted
- Steering wheel adjustable in height and reach
- Headlight range control
- Multimedia systems: 2 USB-C data/charging ports (mid-range) with increased charging power
- No floor covering in the passenger/cargo area
- Without power take-off from the gearbox
- Without blind spot warning, without approach warning
- Upholstery: Seat covers in fabric, design "Austin"
- Radio Composition with 26 cm color touchscreen and 4 speakers
- Radio accessories: Digital radio reception DAB+
- Wheels/Tires: 235/65 R 16 C 115/113 R, optimized for low rolling resistance
- Wheels: Steel wheels 6.5 J x 16, in silver
- Windscreen wiper intermittent control with light and rain sensor
- Sliding door, on the right in the passenger/cargo area
- lettering on the rear
- electromechanical power steering
- Seats 1st row: Seat on the left
- Sun visors, two foldable and swiveling to the side
- Start-stop system
- Power outlets: 2 12V sockets in the driver's cab (in the dashboard)
- Phone: Mobile phone connection via Bluetooth with inductive charging function
- First aid kit, warning triangle and high-visibility vest
- Lashing eyes for securing cargo



- Traffic sign recognition
- Prepared for "We Connect" and "We Connect Plus"
- Preparation Alcohol Interlock
- thermal insulation glazing
- Accessories: On-board tools
- Approval: Light commercial vehicle version up to 3 seats

Extra equipment

- Storage compartments: Glove compartment with lockable, illuminated flap
- Exterior mirrors, electrically adjustable, heated and folding
- Electrical interface for external use (function control unit 1)
- Suspension/damping, reinforced and stabilization, reinforced
- Interior lighting: Front step lighting
- LED headlights with LED daytime running lights (headlight range control, automatically regulated)
- Marker lights, side
- Engine: Stationary regeneration
- Package: Basic Assistance Package (incl. Intelligent Speed Assist and cruise control - speed limiter and "Intelligent Speed Assist" - electronic cruise control (GRA))
- Upholstery: Durable fabric seat covers, "Marathon" design
- Radio Ready to Discover with 26 cm color touchscreen with navigation preparation & 4 speakers (2 USB-C data/charging ports (center console) with increased charging power and 2 USB-C charging ports (center, windshield) - 4 speakers: 2 tweeters, 2 woofers - Bluetooth mobile phone connectivity with inductive charging function - Navigation system preparation - Optional infotainment system with 26 cm (10.4") color touchscreen)
- Heated windshield washer nozzles, front, and washer fluid level indicator
- Seat heating, left and right, separately adjustable, in the 1st row of seats
- Auxiliary heater: driver's cab and cargo area and fuel-operated auxiliary heater
- Power outlets: 12 volt socket(s) (2 12V sockets in the passenger/ cargo area (one on the C-pillar, one on the D-pillar))

- Prepared for online services
- Electronic immobilizer
- Central locking Keyless-Go without deadbolt
- Registration as a truck

- Towing eye front and rear
- Airbag: Side and head airbags, for the driver
- Batteries: 2nd battery with isolating relay and battery monitoring (wet cell battery)
- Windows: Laminated glass front pane in heat-insulating glass, heated
- Air conditioning "Air Care Climatronic" (windscreen wiper interval control with light and rain sensor - daytime running lights with assistance driving lights and automatic coming and leaving home function)
- Fog lights including cornering lights
- Package: Extended Assistance Package (with Lane Change Assist, "Side Assist", "Blind Spot Detection", Blind Spot Warning on both sides & Leading Forward Warning - Lane Change Assist Side Assist incl. Blind Spot Detection - Blind Spot Warning on both sides and Leading Forward Warning)
- Radio: Wired & Wireless App Connect
- Wheels, tires: spare wheel (steel rim) with driving tires, as well as on-board tools and jack
- Rear View reversing camera
- Hinges for rear doors with an increased opening angle (270°)
- Keys for locking system (4 wireless folding keys)
- Seats 1st row: "ergoActive" suspension seat on the left, in the 1st row
- Sun visors, two foldable and swiveling to the side, with wide-angle mirror on the passenger side
- Power outlet: 230V socket in the left seat frame
- Rear step, across the entire width

Brief expert findings

Documents submitted	At the time of the inspection, the vehicle registration certificate Part 2 (title) was available, but the vehicle registration certificate Part 1 (document) was not. (Copy)
VIN comparison	The vehicle identification number (VIN) was read from the vehicle and its conformity with the submitted documents was confirmed by the undersigned during the inspection.
Inspection	The inspection conditions were sufficient for the assessment of the vehicle. No lifting equipment or pit was available for inspecting the vehicle. Therefore, inspection of the vehicle's underside was only possible to a limited extent.
Test drive	A short maneuvering and shunting exercise was carried out on the company premises.
Engine function test	An engine test run was performed.



Value reducing factors

No.	Component group	Description
1	Roof	Stub aerial - Damage caused by marten / rodent - Replace
2	Electronic systems	Electronic systems (Reifendruckkontrollsystem) - Electrical fault - Perform diagnosis
3	Side panel - rear left side	Side panel - dent(s) - Smart repair
4	Bonnet	Bonnet - Stone chips - Repair and paint
5	Side panel - rear right side	Side panel - dent(s) - Repair and paint

Wear and tear

No.	Component group	Description
1	Interior	Cargo area floor - Broken / torn - No deduction
2	Interior	Interior - Scratch(es) - No deduction

The vehicle shows signs of wear and tear commensurate with its age and use.

Missing parts

Description

Equipment - Vehicle key with remote control (2 von 4)

Order/Scope of Order

An order was placed to prepare a sales report for the described vehicle. This report includes the following:

- Description of key vehicle information
- Documentation of equipment features
(*Delivery by third-party service providers*)
- Documentation of damage, defects, missing parts
- Documentation of prior damage, unrepaired prior damage, repainting
- A brief visual or functional inspection of the equipment details, if possible.
(*Functional testing of driver assistance systems is not included in the scope of services!*)
- a photographic documentation of the vehicle

Basis for the order

This product is based on the guidelines for vehicle returns and valuations of light commercial vehicles published by Alphabet Fleet Management GmbH. The expert makes the specific findings in each individual case objectively, within the framework of the prescribed standards, based on their own expertise.

The vehicle inspection takes place in a fully assembled, unassembled state.

Damage or defects that can only be detected during disassembly/diagnostic work or through further investigation remain within the realm of prognostic risk. An increased risk exists due to concealed defects caused by fraudulent misrepresentation and which were not identifiable by the expert.

Damage or defects resulting from normal use or wear and tear of the vehicle will be accepted in accordance with the applicable standard.

There was no explicit identification or monetary consideration of the expected features within the product.

Features which, in their nature and extent, slightly exceed normal use but do not constitute unacceptable damage, will be documented and indicated as signs of wear, if applicable.

Damage or defects that, according to the applicable standard, can no longer be attributed to normal use or wear and tear are listed under "Value Reducing Factors" in the product description.

Depending on the product specification, a monetary ID can be provided. If this takes place, the costs can be 100% d or pro rata depending on the vehicle's age and mileage.



Previous damages

No apparent prior damage that had been repaired could be found on the vehicle.

Comments

- Winterradsatz ist kein Bestandteil des Auslieferungsumfangs.



Figure 1: Diagonal front (left)



Figure 2: Diagonal front (right)



Figure 3: Diagonal rear (left)



Figure 4: Diagonal rear (right)

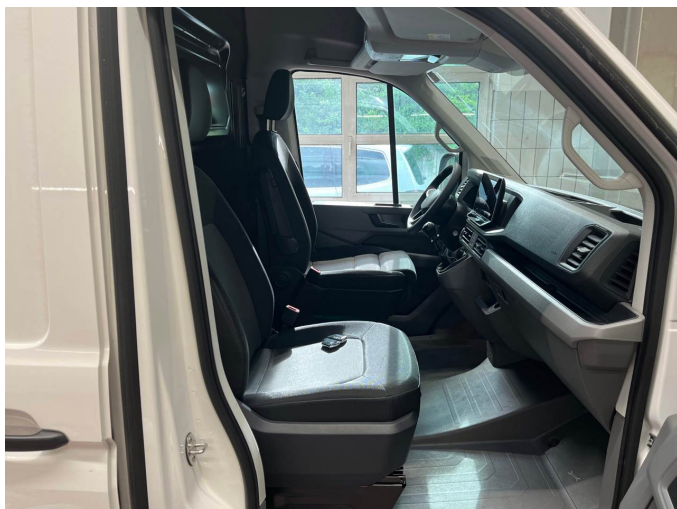


Figure 5: Interior - front



Figure 6: Interior - rear



Figure 7: Instrument cluster



Figure 8: Instrument panel



Figure 9: Interior 360° view

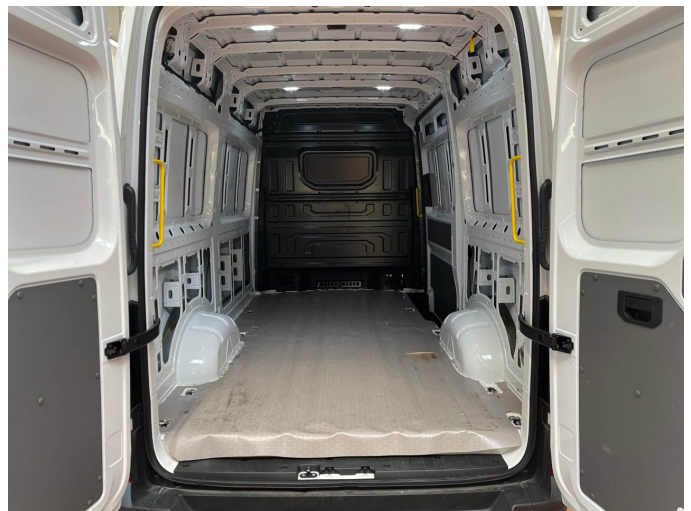


Figure 10: Cargo area



Figure 11: VIN



Figure 12: Mounted tyres



Figure 13: Documents



Figure 14: Documents



Figure 15: Documents



Figure 16: Additional tyres



Figure 17: Misc.



Figure 18: Misc.



Figure 19: Misc.



Figure 20: Misc.



Figure 21: Misc.



Figure 22: Misc.



Figure 23: Misc.



Figure 24: Misc.



Figure 25: Misc.



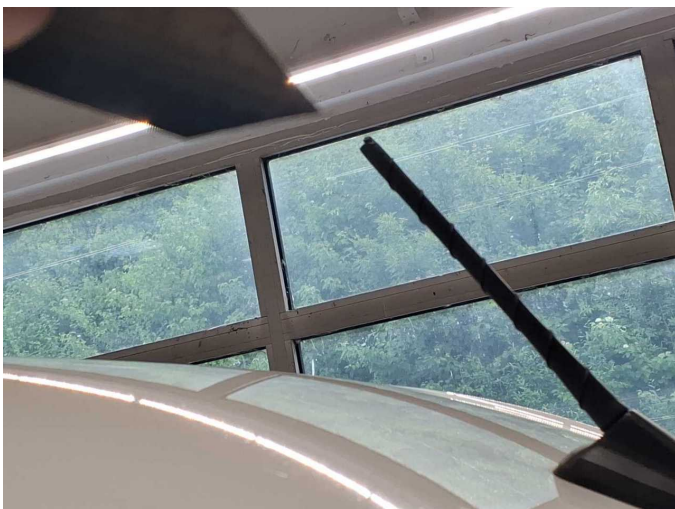
Figure 26: Misc.



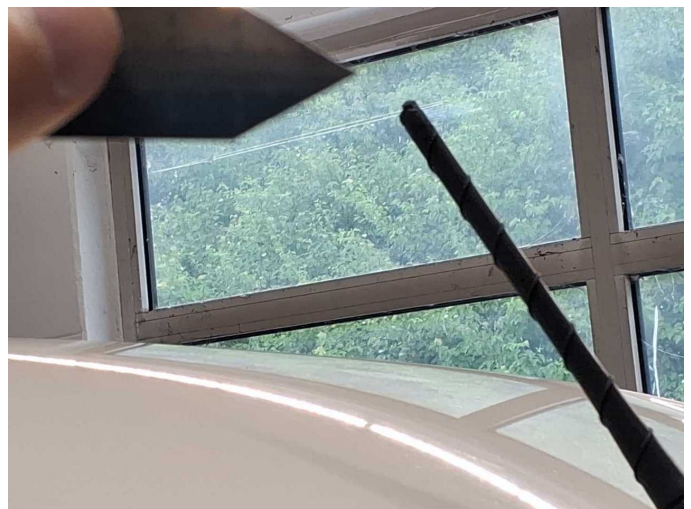
Figure 27: Misc.



Damage 1: Roof: Stub aerial - Damage caused by marten / rodent - Replace



Damage 1: Roof: Stub aerial - Damage caused by marten / rodent - Replace



Damage 1: Roof: Stub aerial - Damage caused by marten / rodent - Replace



Damage 2: Electronic systems: Electronic systems (Reifendruckkontrollsystem) - Electrical fault - Perform diagnosis



Damage 3: Side panel - rear left side: Side panel - dent(s) - Smart repair



Damage 3: Side panel - rear left side: Side panel - dent(s) - Smart repair



Damage 4: Bonnet: Bonnet - Stone chips - Repair and paint



Damage 4: Bonnet: Bonnet - Stone chips - Repair and paint



Damage 5: Side panel - rear right side: Side panel - dent(s) - Repair and paint



Damage 5: Side panel - rear right side: Side panel - dent(s) - Repair and paint



Damage 5: Side panel - rear right side: Side panel - dent(s) - Repair and paint



Wear and tear 1: Interior: Cargo area floor - Broken / torn - No deduction



Wear and tear 1: Interior: Cargo area floor - Broken / torn - No deduction



Wear and tear 1: Interior: Cargo area floor - Broken / torn - No deduction



Wear and tear 1: Interior: Cargo area floor - Broken / torn - No deduction