

Expertise

Protocol number: 45582237
Order No. / Reference: 26381404
Inspection date: 22 May 2026

Manufacturer: Skoda

Model: Kodiaq 2.0 TDI 4x4 DSG Style

VIN: TMBLN9NS6P8523208



Vehicle details

Manufacturer / Type / Model / Equipment

Skoda Kodiaq 2.0 TDI 4x4 DSG Style

Vehicle Identification number TMBLN9NS6P8523208

Mileage (Read) 74,399 km

First registration 19 Apr 2023

Number of holders 1

Next periodical technical inspection 04/2028

(Report on hand)

Power / Engine displacement 147 kw / 1,968 ccm

Fuel type / Cylinder Diesel / 4

Gearbox / Number of gears Automatic / 7

Type of drive All-wheel drive

Type of vehicle SUV

Colour / colour code Graphit-Grau Metallic

Doors / Seats 5 / 5

Upholstery type Cloth / leather combination

Colour of upholstery Black-Grey

Vehicle with smoke odor no



Vehicle details			
Maintenance booklet / proof	digital proof / complete	Next maintenance in	495 Tag(e)
Last service on / at	09/2025 at 60,388 km		
Key is / should be	2 / 2	FZG documents	ZB#2 (B) was available (copy), ZB#1 (S) was not available.
		Letter No.	GQ566225
Previous damage / Accident	Detectable	Repainting	Detectable
Inspection conditions	sufficient	Lifting equipment / pit	yes
Test drive	short drive on the company premises	Engine function test	Performed
Manufacturer key number/ type code number	8004 / AVW 00613		
Emission standard	EURO6;WLTP;AP;PI/CI; M, N1 I	fine dust sticker	
Permitted total weight	2,410 kg	Empty weight	

Tyres

Mounted tyres				
#	Tyre size	Type of tyre	Manufacturer	Tread depth
1)	235/55 R18 100V	Summer tyres on Light alloy	Continental	5mm / 5mm
2)	235/55 R18 100V	Summer tyres on Light alloy	Continental	6mm / 6mm
Additional tyres				
#	Tyre size	Type of tyre	Manufacturer	Tread depth
1)	235/55 R18 104H	Winter tyres on Light alloy	Pirelli	5mm / 5mm
2)	235/55 R18 104H	Winter tyres on Light alloy	Pirelli	6mm / 6mm
Replacement				
Typ	Tyre size	Type of tyre	Manufacturer	Tread depth
	Tirefit	Expiration date 01/2027		

Legend: Tread depth information for the left tire is listed first, for the right tire it is listed second on the axle in the direction of travel.



Equipment

Equipment

- Klimaautomatik

|



Standard equipment

- 12V socket in the center console and in the trunk
- Storage compartments behind the wheel arches in the trunk
- Airbag, driver's knee airbag
- Airbag, front side airbags
- Permanent all-wheel drive
- Traction control (ASR)
- Electrically folding exterior mirrors including interior and driver's side mirrors with automatic dimming
- Hill start assist
- Care Connect: Proactive services (10-year term)
- Roof rails, anodized
- Diesel particulate filter
- Tachometer
- Easy Start (start-stop button)
- Electronic parking brake including auto-hold function
- ESC Electronic Stability Control
- Electric windows front and rear
- Front radar assistant including city emergency braking function with pedestrian detection
- Cruise control
- Tinted windows
- Isofix anchorage on the outer rear seats including top tether
- Boot cover, roll-up and removable
- Paint finish: Solid
- LED taillights in crystal glass look with animated turn signals
- Reading lights at the front of the headliner
- Rear center armrest with cup holders
- Engine drag torque control (MSR)
- Front and rear parking sensors
- Wheel arch cover
- Radio accessories: 8 speakers
- Radio accessories: Wireless SmartLink
- Tire pressure monitoring
- Rear seat backrest split 60:40, foldable, longitudinally adjustable, backrest angle adjustable
- Electromechanical power steering
- Seats: Heated front seats
- Seats: Electrically adjustable front seats with memory function
- Skoda Care Connect
- Sun visor on driver and passenger side with illuminated vanity mirror
- Front door sill trims
- Variable fastening concept in the trunk
- Immobiliser
- Storage compartment on the left wheel arch
- front aero windshield wipers
- Airbag, driver and passenger
- Airbag, head airbags
- Allergen filter
- Anti-lock braking system (ABS)
- Dashboard in black / black, door trim in black
- Electrically adjustable and heated exterior mirrors with integrated side indicators
- Hydraulic brake assist (HBA)
- Grey headliner
- Decorative inlay Linear Diamonds
- Digital Cockpit (8")
- Third brake light
- eCall
- Electronic transverse differential lock (XDS+)
- Driving light assistant and rain sensor
- High Beam Assist (Light Assist)
- Front footwell lighting
- Closed storage compartment on the driver's side
- Transmission: 7-speed dual-clutch transmission (DSG)
- Illuminated glove compartment
- Kessy - keyless entry and start-stop system
- Climatronic air conditioning (2-zone)
- Front and rear headrests are height-adjustable.
- LED matrix headlights and dynamic high beam assist (Light Assist)
- Steering wheel: Leather steering wheel with multifunction buttons including paddle shifters.
- Front center armrest, including storage compartment
- Multi-collision brake
- Upholstery: Fabric-leather
- Radio: Bolero infotainment system
- Radio accessories: Digital radio reception DAB+
- Tire Mobility Kit
- Wheels: 18" Elbrus alloy wheels
- Heated windshield washer nozzles, front
- Headlights washer / wiper system
- Kodiaq seat belts
- Seats: Adjustable lumbar support in the front seats
- Seats: Height-adjustable front seats
- Seats: Remote release of the rear seat backrests (2nd row) in the boot
- Speed limiter
- Telephone: Convenient hands-free telephone system including phone box
- Lashing eyes in the trunk
- Central locking with remote control



Extra equipment

- Swiveling trailer hitch (with electric release, including trailer stabilization)
- Anti-theft alarm system with SAFE system incl. Kessy & Easy Start (interior monitoring and tilt sensor incl. Kessy & Easy Start)
- Climatronic air conditioning (3-zone) (fully automatic, separately adjustable for driver, front passenger and rear seats, including humidity sensor and odor and allergen filter)
- Proactive occupant protection including rear side airbags
- Rear view camera
- Seats: Heated front and outer rear seats
- Seats: Folding tables on the front seatbacks
- Auxiliary heating
- Traveller assistance system (DSG) (Predictive Adaptive Cruise Control pACC (control range up to 210 km/h) - Lane Assist - Adaptive Lane Guidance - Traffic Jam and Emergency Assist - Traffic Sign Recognition)
- Driving profile selection (including off-road assistant for 4x4 drive)
- Paint finish: Metallic / Pearl effect
- Package: Business Columbus (Style) (Dynamic radio navigation system Columbus - 9.2" capacitive color display - Digital Cockpit Plus (10") - Driver fatigue detection - 230V socket and one USB charging port (Type-C) - Electric tailgate operation including comfort opening - Sunset - Luggage net partition - Infotainment Online (3-year subscription))

Brief expert findings

Documents submitted	At the time of the inspection, the vehicle registration certificate Part 2 (title) was available, but the vehicle registration certificate Part 1 (document) was not. (Copy)
VIN comparison	The vehicle identification number (VIN) was read from the vehicle and its conformity with the submitted documents was confirmed by the undersigned during the inspection.
Inspection	The inspection conditions were sufficient for the assessment of the vehicle. Lifting equipment and/or a pit were available for examining the vehicle.
Test drive	A short maneuvering and shunting exercise was carried out on the company premises.
Engine function test	An engine test run was performed.

Value reducing factors

No.	Component group	Description
1	Roof	Roof rail - left side (Lackeinschlüsse) - Unprofessionally repaired - Paint
2	Roof	Roof rail - right side (Lackeinschlüsse) - Unprofessionally repaired - Paint
3	Front bumper	Grille - Broken / torn - Replace
4	Side panel - rear right side	Side panel (Lackeinschlüsse, Lackierkante sichtbar) - Unprofessionally repaired - Paint
5	Roof	Roof (Lackeinschlüsse; wellig (+Dellen Gebrauchspur)) - Unprofessionally repaired - Paint

Wear and tear

No.	Component group	Description
1	Bonnet	Bonnet (Auslegen) - Stone chips - No deduction
2	Door - front left side	Door edge - Scratch(es) - No deduction
3	Vehicle glazing	Windscreen (Ohne Rissbildung) - Stone chips - No deduction
4	Body	Body - Scratch(es) - No deduction

The vehicle shows signs of wear and tear commensurate with its age and use.

Previous damages

No.	Previous damage	Extent of damage (Net)
1	Roof, Front, Provided by user / customer, from 9 Dec 2023	9.947,60 €



Repainting

No. Repainting

- 1 Side panel - rear left side, Professionally carried out, Invoice of repair done Non-existent
- 2 Roof, Unprofessionally carried out, Invoice of repair done Non-existent
- 3 Roof rail - left side, Unprofessionally carried out, Invoice of repair done Non-existent
- 4 Roof rail - right side, Unprofessionally carried out, Invoice of repair done Non-existent
- 5 Side panel - rear right side, Unprofessionally carried out, Invoice of repair done Non-existent

Paint coat thickness measurement

Roof	203 µm	Roof rail - left side	458 µm
Roof rail - right side	393 µm	Side panel - rear left side	174 µm
Side panel - rear right side	220 µm		

Order/Scope of Order

An order was placed to prepare a sales report for the described vehicle. This report includes the following:

- Description of key vehicle information
- Documentation of equipment features
(*Delivery by third-party service providers*)
- Documentation of damage, defects, missing parts
- Documentation of prior damage, unrepaired prior damage, repainting
- A brief visual or functional inspection of the equipment details, if possible.
(*Functional testing of driver assistance systems is not included in the scope of services!*)
- a photographic documentation of the vehicle

Basis for the order

This product is based on the guidelines for vehicle returns and valuations published by Alphabet Fleet GmbH. The expert makes the specific findings in each individual case objectively, within the framework of the prescribed standards, based on their own expertise.

The vehicle inspection takes place in a fully assembled, unassembled state.

Damage or defects that can only be detected during disassembly/diagnostic work or through further investigation remain within the realm of prognostic risk. An increased risk exists due to concealed defects caused by fraudulent misrepresentation and which were not identifiable by the expert.

Damage or defects resulting from normal use or wear and tear of the vehicle will be accepted in accordance with the applicable standard.

There was no explicit identification or monetary consideration of the expected features within the product.

Features which, in their nature and extent, slightly exceed normal use but do not constitute unacceptable damage, will be documented and indicated as signs of wear, if applicable.

Damage or defects that, according to the applicable standard, can no longer be attributed to normal use or wear and tear are listed under "Value Reducing Factors" in the product description.

Depending on the product specification, a monetary ID can be provided. If this takes place, the costs can be 100% d or pro rata depending on the vehicle's age and mileage.

Previous damages

According to available information previous damages were repaired at the vehicle. Traces of repairs, which allow conclusions about the area of repair, were not recognizable during the inspection.

Comments

- Winterradsatz ist kein Bestandteil des Auslieferungsumfangs.



Figure 1: Diagonal front (left)



Figure 2: Diagonal front (right)



Figure 3: Diagonal rear (left)



Figure 4: Diagonal rear (right)



Figure 5: Interior - front

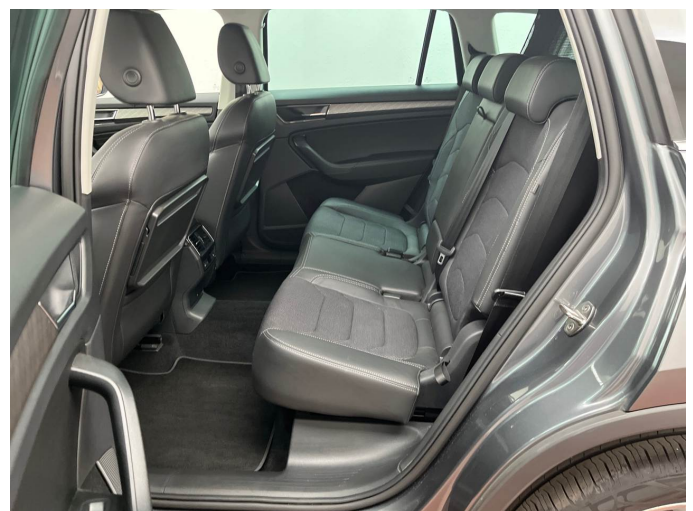


Figure 6: Interior - rear



Figure 7: Instrument cluster



Figure 8: Instrument panel



Figure 9: Interior 360° view



Figure 10: Cargo area

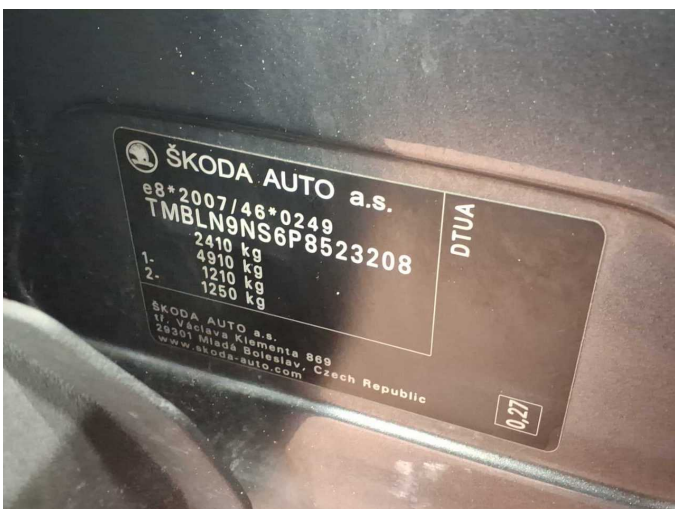


Figure 11: VIN



Figure 12: Mounted tyres



Figure 19: Navigation



Figure 20: Misc.



Figure 21: Misc.



Figure 22: Misc.



Figure 23: Misc.



Figure 24: Misc.



Figure 25: Misc.



Figure 26: Misc.



Figure 27: Misc.



Figure 28: Misc.



Figure 29: Misc.



Figure 30: Misc.



Figure 31: Misc.



Figure 32: Misc.

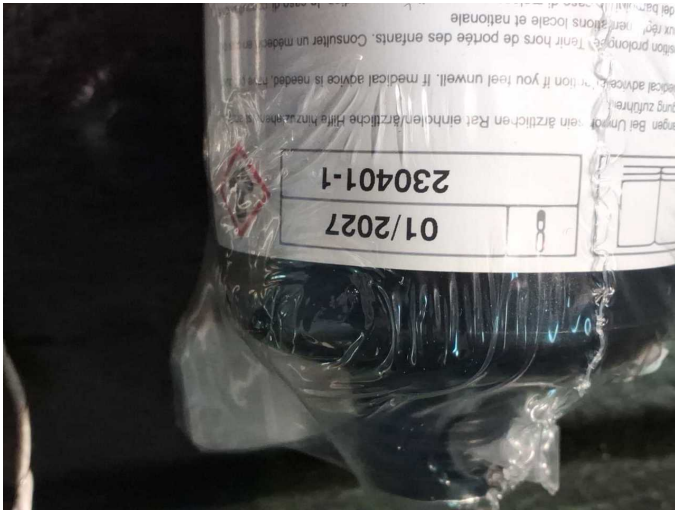


Figure 33: Misc.



Figure 34: Misc.



Figure 35: Misc.



Figure 36: Misc.



Figure 37: Misc.



Damage 1: Roof: Roof rail - left side (Lackeinschlüsse) - Unprofessionally repaired - Paint



Damage 1: Roof: Roof rail - left side (Lackeinschlüsse) - Unprofessionally repaired - Paint



Damage 1: Roof: Roof rail - left side (Lackeinschlüsse) - Unprofessionally repaired - Paint



Damage 1: Roof: Roof rail - left side (Lackeinschlüsse) - Unprofessionally repaired - Paint



Damage 1: Roof: Roof rail - left side (Lackeinschlüsse) - Unprofessionally repaired - Paint



Damage 1: Roof: Roof rail - left side (Lackeinschlüsse) - Unprofessionally repaired - Paint



Damage 1: Roof: Roof rail - left side (Lackeinschlüsse) - Unprofessionally repaired - Paint



Damage 2: Roof: Roof rail - right side (Lackeinschlüsse) - Unprofessionally repaired - Paint



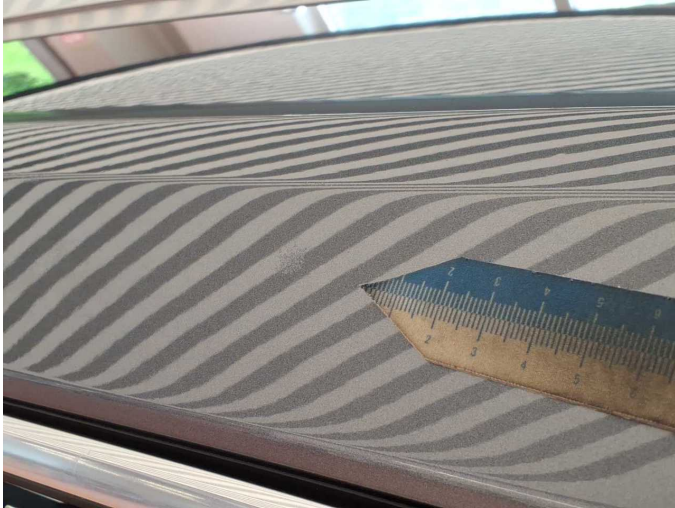
Damage 2: Roof: Roof rail - right side (Lackeinschlüsse) - Unprofessionally repaired - Paint



Damage 2: Roof: Roof rail - right side (Lackeinschlüsse) - Unprofessionally repaired - Paint



Damage 2: Roof: Roof rail - right side (Lackeinschlüsse) - Unprofessionally repaired - Paint



Damage 2: Roof: Roof rail - right side (Lackeinschlüsse) - Unprofessionally repaired - Paint



Damage 3: Front bumper: Grille - Broken / torn - Replace



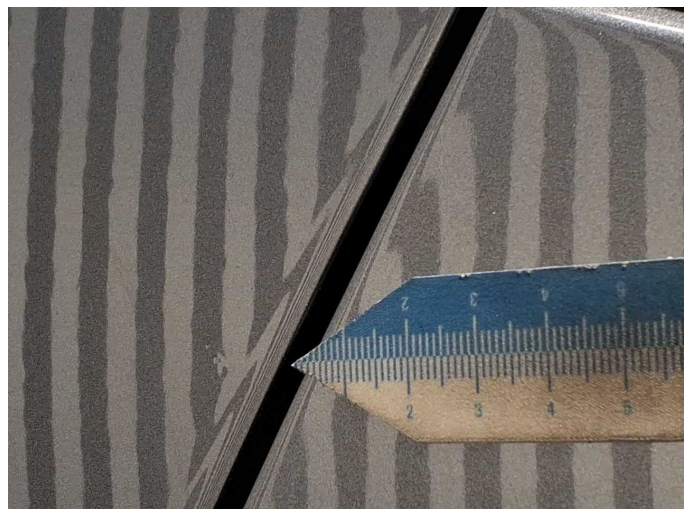
Damage 3: Front bumper: Grille - Broken / torn - Replace



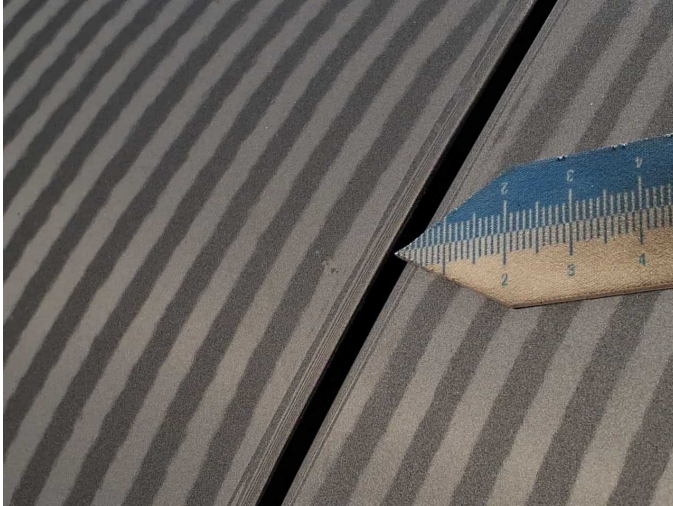
Damage 3: Front bumper: Grille - Broken / torn - Replace



Damage 4: Side panel - rear right side: Side panel (Lackeinschlüsse, Lackierkante sichtbar) - Unprofessionally repaired - Paint



Damage 4: Side panel - rear right side: Side panel (Lackeinschlüsse, Lackierkante sichtbar) - Unprofessionally repaired - Paint



Damage 4: Side panel - rear right side: Side panel (Lackeinschlüsse, Lackierkante sichtbar) - Unprofessionally repaired - Paint



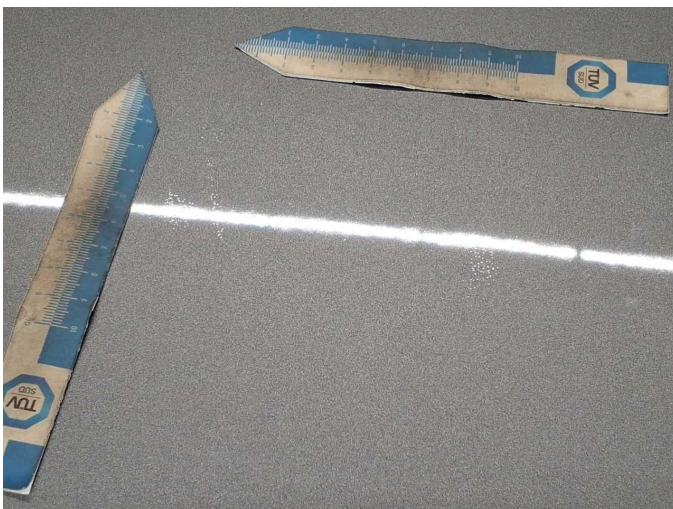
Damage 4: Side panel - rear right side: Side panel (Lackeinschlüsse, Lackierkante sichtbar) - Unprofessionally repaired - Paint



Damage 4: Side panel - rear right side: Side panel (Lackeinschlüsse, Lackierkante sichtbar) - Unprofessionally repaired - Paint



Damage 5: Roof: Roof (Lackeinschlüsse; wellig (+Dellen Gebrauchspur)) - Unprofessionally repaired - Paint



Damage 5: Roof: Roof (Lackeinschlüsse; wellig (+Dellen Gebrauchspur)) - Unprofessionally repaired - Paint



Damage 5: Roof: Roof (Lackeinschlüsse; wellig (+Dellen Gebrauchspur)) - Unprofessionally repaired - Paint



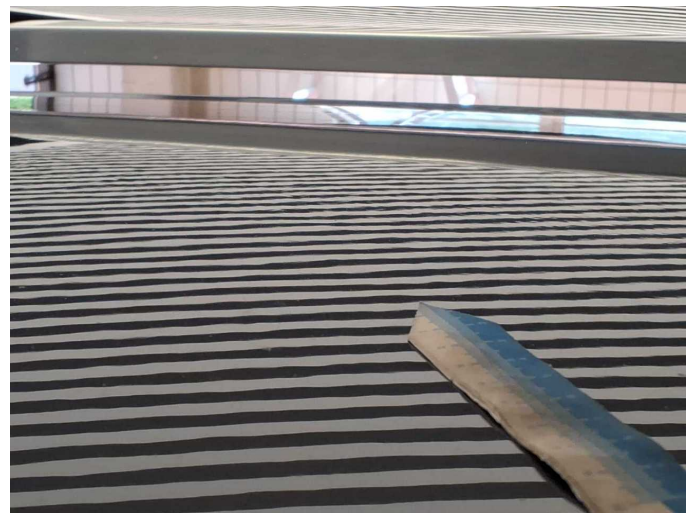
Damage 5: Roof: Roof (Lackeinschlüsse; wellig (+Dellen Gebrauchspur))
- Unprofessionally repaired - Paint



Damage 5: Roof: Roof (Lackeinschlüsse; wellig (+Dellen Gebrauchspur))
- Unprofessionally repaired - Paint



Damage 5: Roof: Roof (Lackeinschlüsse; wellig (+Dellen Gebrauchspur))
- Unprofessionally repaired - Paint



Damage 5: Roof: Roof (Lackeinschlüsse; wellig (+Dellen Gebrauchspur))
- Unprofessionally repaired - Paint



Wear and tear 1: Bonnet: Bonnet (Auslegen) - Stone chips - No deduction



Wear and tear 1: Bonnet: Bonnet (Auslegen) - Stone chips - No deduction



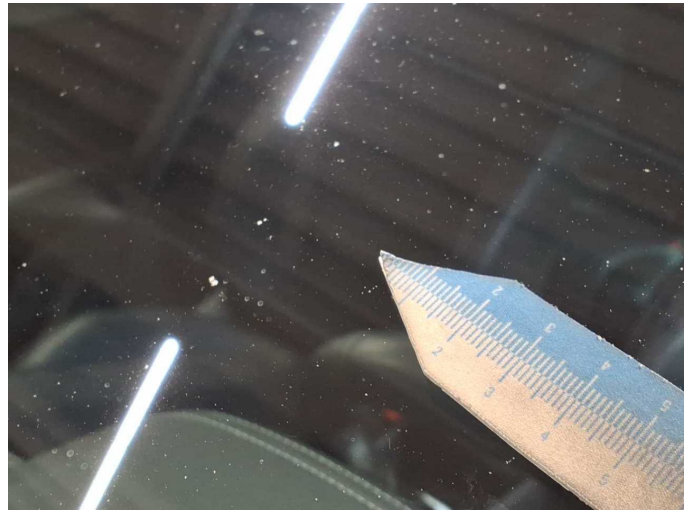
Wear and tear 2: Door - front left side: Door edge - Scratch(es) - No deduction



Wear and tear 2: Door - front left side: Door edge - Scratch(es) - No deduction



Wear and tear 3: Vehicle glazing: Windscreen (Ohne Rissbildung) - Stone chips - No deduction



Wear and tear 3: Vehicle glazing: Windscreen (Ohne Rissbildung) - Stone chips - No deduction



Repainting 1: Side panel - rear left side



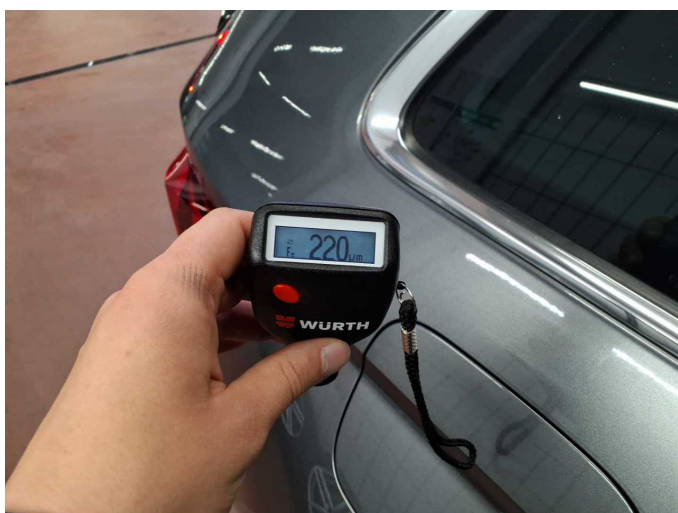
Repainting 2: Roof



Repainting 3: Roof rail - left side



Repainting 4: Roof rail - right side



Repainting 5: Side panel - rear right side



Wartungshistorie

(gemäß Auftraggeber Informationen)

Fahrgestellnummer: TMBLN9NS6P8523208

Hersteller / Modell: SKODA SKODA Kodiaq 2.0 TDI 4x4 DSG Style

Datum	KM-Stand	Beschreibung
29.09.2025	60.388	Bremsflüssigkeit; Bremsflüssigkeit ern; Getriebeöl ern/prüfen; Motoröl b. Wartung; Ölfilter ern; Ölwechsel - Hinterachse; Regelwartungsdienst; Reparatur Sonstiges; Wartung Sonstiges
14.11.2024	31.342	Bremse Sonstiges; Bremsklötze hinten; Bremsklötze vorne; Motoröl b. Wartung; Ölfilter ern; Regelwartungsdienst; Wartung Sonstiges