

Expertise

Protocol number: 45976515
Order No. / Reference: 26361914
Inspection date: 17 Jun 2026

Manufacturer: Skoda

Model: Superb Combi 2.0 TDI DSG Sportline

VIN: TMBJR9NP7P7037665



Vehicle details

Manufacturer / Type / Model / Equipment

Skoda Superb Combi 2.0 TDI DSG Sportline

Vehicle Identification number	TMBJR9NP7P7037665
Mileage (Read)	67,514 km
First registration	10 Mar 2023
Number of holders	2
Next periodical technical inspection	03/2026 (Report not on hand)

Power / Engine displacement	147 kw / 1,968 ccm
------------------------------------	--------------------

Fuel type / Cylinder	Diesel / 4
-----------------------------	------------

Gearbox / Number of gears	Automatic / 7
----------------------------------	---------------

Type of drive	Front drive
----------------------	-------------

Type of vehicle	Station wagon
------------------------	---------------

Colour / colour code	Velvet rot metallic (F3P)
-----------------------------	---------------------------

Doors / Seats	5 / 5
----------------------	-------

Upholstery type	Alcantara / Leather
------------------------	---------------------

Colour of upholstery	Black-Anthracite
-----------------------------	------------------



Vehicle details

Maintenance booklet / proof	digital proof / complete	Next maintenance in	26,700 km
Last service on / at	03/2026 at 64,131 km		
Key is / should be	3 / 3	FZG documents	ZB#2 (B) was available (copy), ZB#1 (S) was not available.
		Letter No.	GQ554050
Previous damage / Accident	Detectable	Repainting	None detectable
Inspection conditions	sufficient	Lifting equipment / pit	yes
Test drive	Not performed	Engine function test	Performed
Manufacturer key number/ type code number	8004 / AWB 00540		
Emission standard	EURO6;WLTP;AP;PI/CI; M, N1 I	fine dust sticker	
Permitted total weight	2,237 kg	Empty weight	

Tyres

Mounted tyres

#	Tyre size	Type of tyre	Manufacturer	Tread depth
1)	235/40 R19 96W	Summer tyres on Light alloy	Bridgestone	5mm / 5mm
2)	235/40 R19 96W	Summer tyres on Light alloy	Bridgestone	6mm / 6mm

Additional tyres

#	Tyre size	Type of tyre	Manufacturer	Tread depth
1)	215/60 R16 99H	Winter tyres on Light alloy	Dunlop	6mm / 6mm
2)	215/60 R16 99H	Winter tyres on Light alloy	Dunlop	8mm / 8mm

Replacement

Typ	Tyre size	Type of tyre	Manufacturer	Tread depth
	Tirefit	Expiration date 01/2027		

Legend: Tread depth information for the left tire is listed first, for the right tire it is listed second on the axle in the direction of travel.

TÜV SÜD Auto Partner GmbH
Wiesenring 2
04159 Leipzig

Inspection location
Mosolf SE & Co.KG
August-Horch-Straße 1
04519 Rackwitz



Equipment



Standard equipment

- Closed storage compartments behind the wheel arches in the trunk, including cargo elements
- Airbag, driver's knee airbag
- Airbag, front side airbags
- Traction control (ASR)
- Electrically adjustable and heated exterior mirrors
- Exterior mirrors with memory function
- Electrically folding exterior mirrors
- Hill start assist
- black headliner
- Dark Carbon decorative inlay
- Digital Cockpit Plus 10.2"
- Third brake light
- stainless steel pedals
- Electronic parking brake including auto-hold function
- Electronic Stability Control (ESC)
- Chassis: Adaptive chassis DCC (10 mm lowering, adjustable damper setting)
- Front radar assistant including city emergency braking function
- Transmission: 7-speed dual-clutch transmission (DSG)
- Heated rear window
- Rear spoiler
- ISOFIX preparation on the outer rear seats, including top tether
- Air Care Climatronic air conditioning (2-zone)
- Headrests integrated into front seats, rear headrests height-adjustable
- Paintwork: Special paintwork
- LED reading lights at the front and rear of the headliner
- LED taillights in crystal glass look and animated turn signals
- Steering wheel: Height and reach adjustable leather steering wheel
- Rear center armrest with cup holders and pass-through option
- Multifunctional storage compartment under the boot cover
- LED fog lights with integrated cornering lights
- Upholstery: Alcantara trim in sport black
- Radio accessories: Digital radio reception DAB+
- Radio accessories: USB ports at the front (Type-C) and USB charging port (Type-A) in the center armrest
- Tire pressure monitoring
- Wheels: 19" Vega alloy wheels, diamond-cut/anthracite
- Heated windshield washer nozzles
- Superb seat belts
- Seats: Adjustable lumbar support in the front seats
- Seats: Height-adjustable front seats
- Seats: Rear seat backrest split 60:40, foldable
- SKODA Care Connect
- Start/stop system including brake energy recuperation
- 12V socket in the trunk
- Sunset (rear window and rear side windows tinted dark)
- Textile floor mats
- Chrome-plated elements
- Storage compartments
- Airbag, driver and switchable passenger airbag
- Airbag, head airbags
- Anti-lock braking system (ABS)
- Dashboard in black / black, door panels in black, headliner in black
- Exterior mirrors painted black, door handles in body color
- Illuminated glove compartment
- Hydraulic brake assist (HBA)
- Roof rails, painted in glossy black
- Diesel particulate filter and SCR catalyst
- Tachometer
- Dynamic Light Assistant (Masked Continuous High Beam)
- Electric tailgate opening
- Electronic transverse differential lock (XDS+)
- Driving light assistant and rain sensor (Easy Light Assist)
- Electric windows front and rear, including anti-pinch protection and child safety lock
- Front and rear footwell lighting
- Cruise control system including speed limiter
- Tinted windows
- Rear window wiper including windshield washer system
- Interior mirror automatically dimming
- Kessy, keyless entry and start-stop system
- Child safety lock for rear doors & windows, electric
- Boot cover, roll-up and removable, semi-automatic
- Radiator grille slats, frame, side moldings and window surrounds in black
- Metal loading sill protector
- LED ambient lighting
- Remote release of the rear seat backrests in the trunk
- Steering wheel: Heated steering wheel in sport design with multifunction buttons including paddle shifters.
- Matrix LED headlights
- Front center armrest with storage compartment
- Engine drag torque control (MSR)
- Multi-collision brake
- Rear parking sensors
- Radio: Bolero infotainment system
- Radio accessories: Voice control
- Radio accessories: Wireless SmartLink
- Umbrella compartments in the front side doors
- Tire mobility kit
- Gearshift and handbrake levers in leather
- Electromechanical power steering
- Seats: Heated front seats
- Seats: Electrically adjustable front seats with memory function
- Seats: Front sports seats
- Sun visor on driver and passenger side with illuminated make-up mirror
- 12V socket in the center console, front and rear



- Lashing eyes in the trunk
- Central locking with remote control

- Telephone: Bluetooth hands-free system
- Door sill plates
- Glazing: Acoustic glazing in the front side windows
- Immobiliser

Extra equipment

- Heated windshield, wireless
- Boot mat plastic Com bi - 3V9061170 Price
- Paint finish: Premium paint finish
- Package: Business Columbus (Columbus navigation system - voice control - Wi-Fi hotspot - Wireless Smartlink for Apple CarPlay - 9.2" capacitive touchscreen in glass design - Phonebox - Traveller assistance system (traffic sign recognition, predictive lane keeping assist ACC, adaptive lane keeping assist, emergency and traffic jam assist, capacitive steering wheel with hands-off detection) - 230 V socket and 3 USB ports, tablet holder - Infotainment Online (3-year subscription))
- Progressive steering (adjustment of the steering angle depending on the speed)
- Rear rubber floor mat set - 3V 0061551 Price incl.
- Headrests: Sleeping headrests on the outer rear seats
- Package: Assistance (Lane Change Assist - Reversing Camera - Parking Assist - Preparation for a Trailer Hitch - (Active Tire Pressure Monitoring System) - Driver Fatigue Detection)
- Package: Comfort Plus (Combi) (3-zone Climatronic - heated front and rear seats - KESSY - 3rd vehicle key - comfort opening for the tailgate - heated steering wheel (with shift paddles) - sunshade for the rear side windows)
- Package: Safety (Proactive occupant protection - rear side airbags - Isofix anchorage for passenger seat)
- Seats: Manual seat length adjustment for the electric front seats

Brief expert findings

Documents submitted	At the time of the inspection, the vehicle registration certificate Part 2 (title) was available, but the vehicle registration certificate Part 1 (document) was not. (Copy)
VIN comparison	The vehicle identification number (VIN) was read from the vehicle and its conformity with the submitted documents was confirmed by the undersigned during the inspection.
Inspection	The inspection conditions were sufficient for the assessment of the vehicle. Lifting equipment and/or a pit were available for examining the vehicle.
Test drive	No test drive/shunting maneuver was carried out during the inspection of the vehicle.
Engine function test	An engine test run was performed.

Value reducing factors

No.	Component group	Description
1	Misc.	Main inspection - No evidence - No deduction
2	Equipment	Vehicle key - Empty - Replace
3	Side panel - rear right side	Sill - Scratch(es) - Smart repair
4	Rear bumper	Rear bumper - Scratch(es) - Smart repair
5	Sill - right side	Sill - Scratch(es) - Smart repair
6	Mudguard - left side	Mudguard - left side - Scratch(es) - Paint
7	Wheel / tyres	Alloy rim - front right side - Scratched - Replace
8	Front bumper	Front bumper - Scratch(es) - Paint
9	Seat - rear	Back seat (Rechts außen, Sitzbezug komplett) - Broken / torn - Replace

Wear and tear

No.	Component group	Description
1	Wheel / tyres	Alloy rim - rear left side - Scratch(es) - No deduction
2	Wheel / tyres	Alloy rim - rear right side - Scratch(es) - No deduction

The vehicle shows signs of wear and tear commensurate with its age and use.



Previous damages

No.	Previous damage	Extent of damage (Net)
1	Rear, Provided by user / customer, from 25 Jun 2025	2.118,67 €

Accident damages

No.	Accident
1	Side right

Order/Scope of Order

An order was placed to prepare a sales report for the described vehicle. This report includes the following:

- Description of key vehicle information
- Documentation of equipment features
(*Delivery by third-party service providers*)
- Documentation of damage, defects, missing parts
- Documentation of prior damage, unrepaired prior damage, repainting
- A brief visual or functional inspection of the equipment details, if possible.
(*Functional testing of driver assistance systems is not included in the scope of services!*)
- a photographic documentation of the vehicle

Basis for the order

This product is based on the guidelines for vehicle returns and valuations published by Alphabet Fleet GmbH. The expert makes the specific findings in each individual case objectively, within the framework of the prescribed standards, based on their own expertise.

The vehicle inspection takes place in a fully assembled, unassembled state.

Damage or defects that can only be detected during disassembly/diagnostic work or through further investigation remain within the realm of prognostic risk. An increased risk exists due to concealed defects caused by fraudulent misrepresentation and which were not identifiable by the expert.

Damage or defects resulting from normal use or wear and tear of the vehicle will be accepted in accordance with the applicable standard.

There was no explicit identification or monetary consideration of the expected features within the product.

Features which, in their nature and extent, slightly exceed normal use but do not constitute unacceptable damage, will be documented and indicated as signs of wear, if applicable.

Damage or defects that, according to the applicable standard, can no longer be attributed to normal use or wear and tear are listed under "Value Reducing Factors" in the product description.

Depending on the product specification, a monetary ID can be provided. If this takes place, the costs can be 100% d or pro rata depending on the vehicle's age and mileage.

Previous damages

Non-repaired previous damages were found at the vehicle. The necessary repair costs are listed in the expert report or if necessary, are listed in detail in a separately enclosed repair cost calculation.

Comments

Die beigefügte Reparaturkostenkalkulation wurde nach bestem Wissen und Gewissen unter eingeschränkten Besichtigungsbedingung im demontagefreien Zustand erstellt. Es können aufgrund verdeckter Beschädigung erhebliche Mehrkosten und somit Abweichung der für den Unfall ausgewiesenen Reparaturkosten nicht ausgeschlossen werden.

ALPHABET



Figure 1: Diagonal front (left)

ALPHABET



Figure 2: Diagonal front (right)

ALPHABET



Figure 3: Diagonal rear (left)

ALPHABET



Figure 4: Diagonal rear (right)

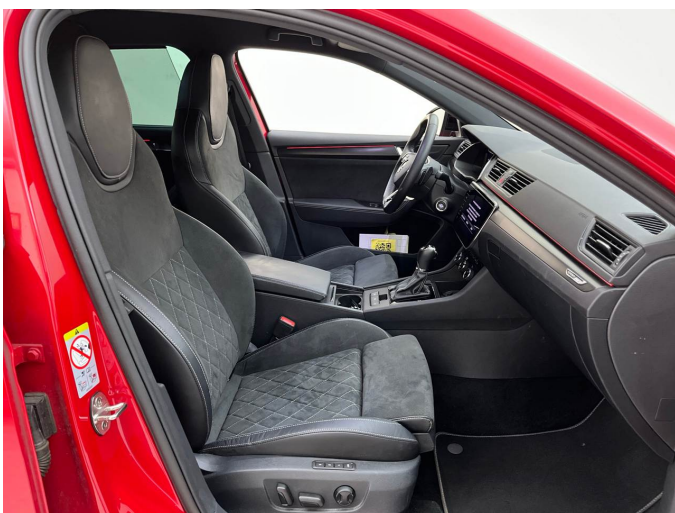


Figure 5: Interior - front



Figure 6: Interior - rear



Figure 7: Instrument cluster



Figure 8: Instrument panel



Figure 9: Interior 360° view



Figure 10: Cargo area



Figure 11: VIN



Figure 12: Mounted tyres

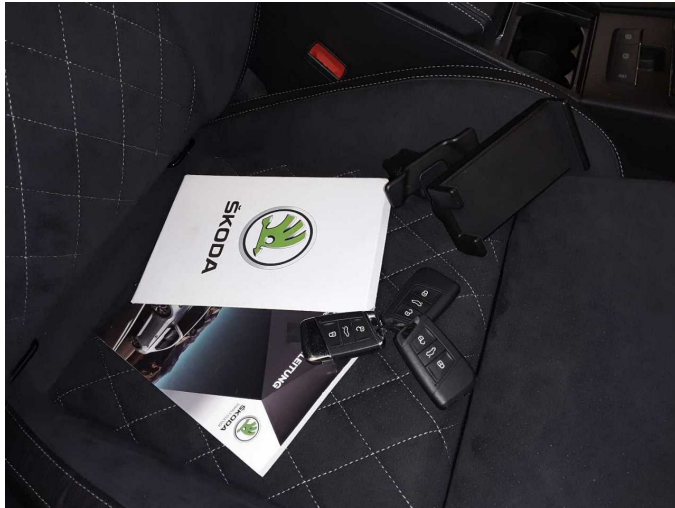


Figure 13: Documents



Figure 14: Documents

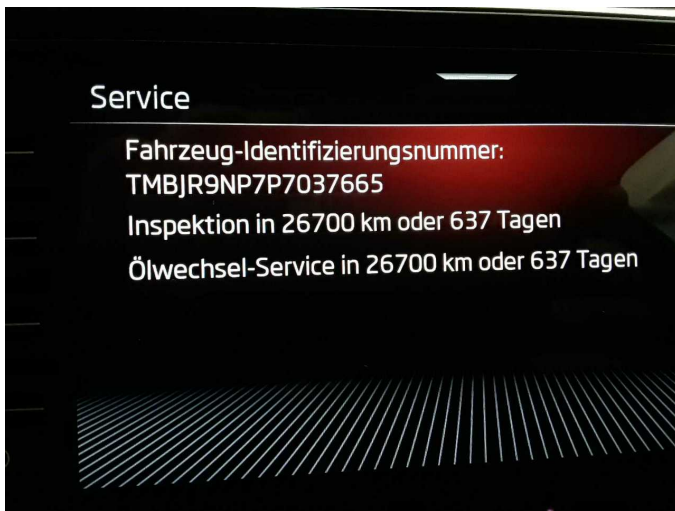


Figure 15: Documents



Figure 16: Documents



Figure 17: Documents



Figure 18: Additional tyres

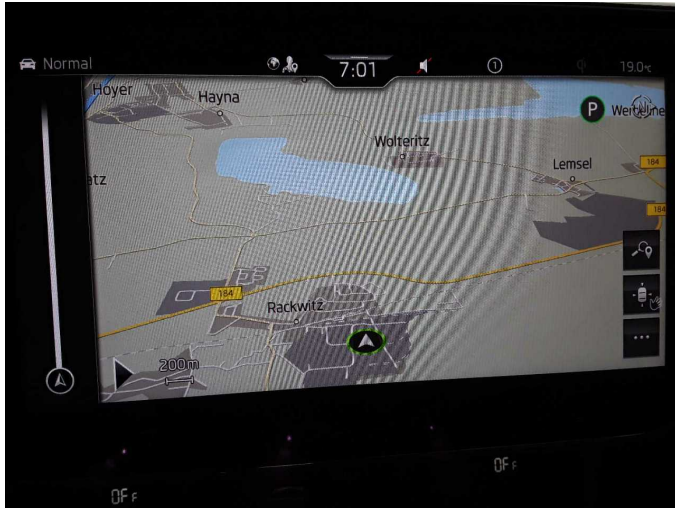


Figure 19: Navigation



Figure 20: Misc.



Figure 21: Misc.

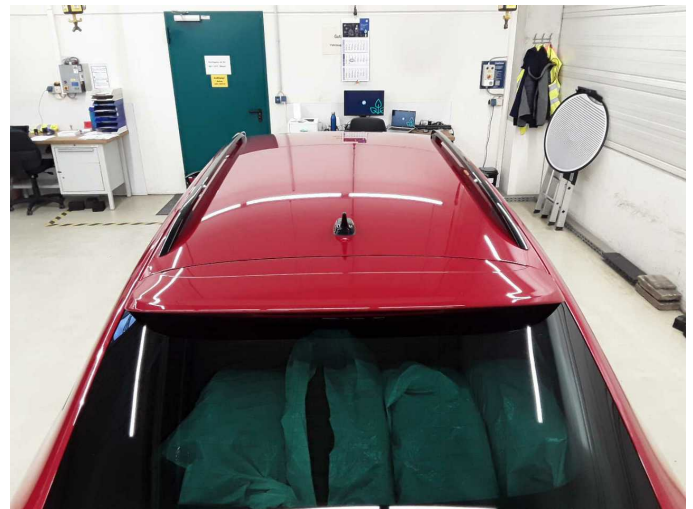


Figure 22: Misc.



Figure 23: Misc.

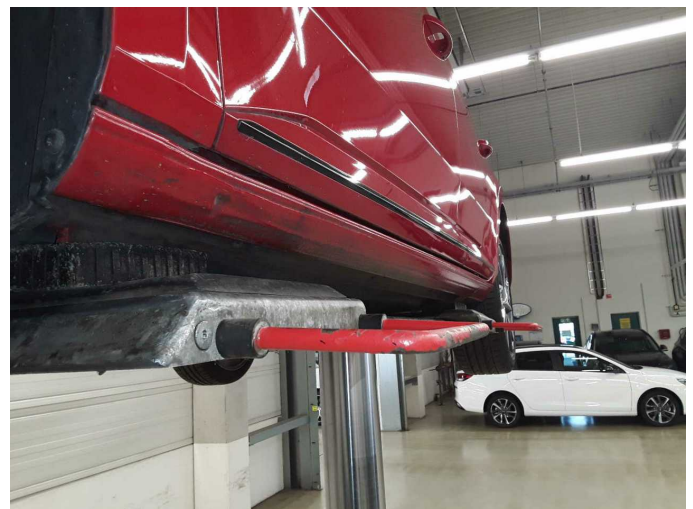


Figure 24: Misc.



Figure 25: Misc.



Figure 26: Misc.

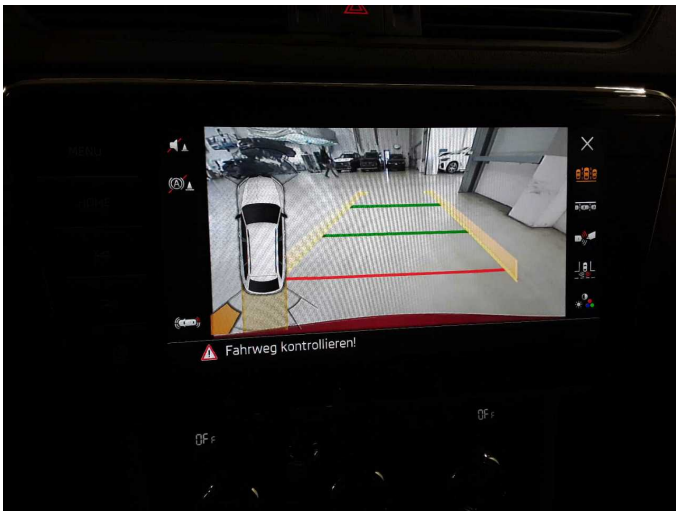


Figure 27: Misc.



Figure 28: Misc.



Figure 29: Misc.



Figure 30: Misc.



Figure 31: Misc.



Figure 32: Misc.



Figure 33: Misc.



Figure 34: Misc.



Damage 2: Equipment: Vehicle key - Empty - Replace



Damage 3: Side panel - rear right side: Sill - Scratch(es) - Smart repair



Damage 3: Side panel - rear right side: Sill - Scratch(es) - Smart repair



Damage 4: Rear bumper: Rear bumper - Scratch(es) - Smart repair



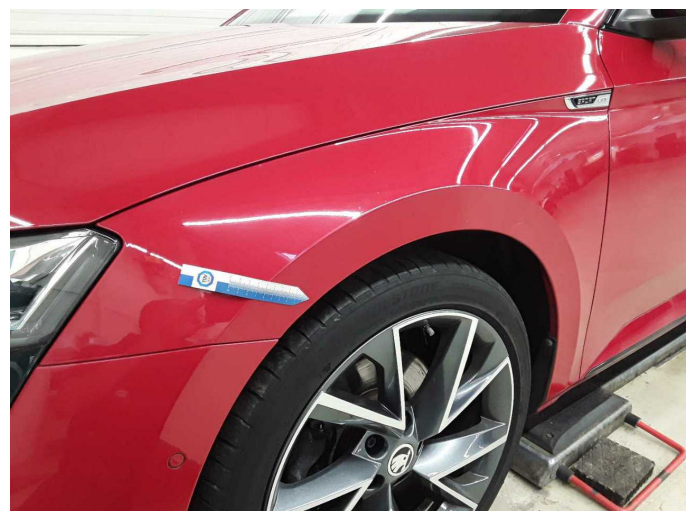
Damage 4: Rear bumper: Rear bumper - Scratch(es) - Smart repair



Damage 5: Sill - right side: Sill - Scratch(es) - Smart repair



Damage 5: Sill - right side: Sill - Scratch(es) - Smart repair



Damage 6: Mudguard - left side: Mudguard - left side - Scratch(es) - Paint



Damage 6: Mudguard - left side: Mudguard - left side - Scratch(es) - Paint



Damage 6: Mudguard - left side: Mudguard - left side - Scratch(es) - Paint



Damage 6: Mudguard - left side: Mudguard - left side - Scratch(es) - Paint



Damage 7: Wheel / tyres: Alloy rim - front right side - Scratched - Replace



Damage 7: Wheel / tyres: Alloy rim - front right side - Scratched - Replace



Damage 7: Wheel / tyres: Alloy rim - front right side - Scratched - Replace



Damage 7: Wheel / tyres: Alloy rim - front right side - Scratched - Replace



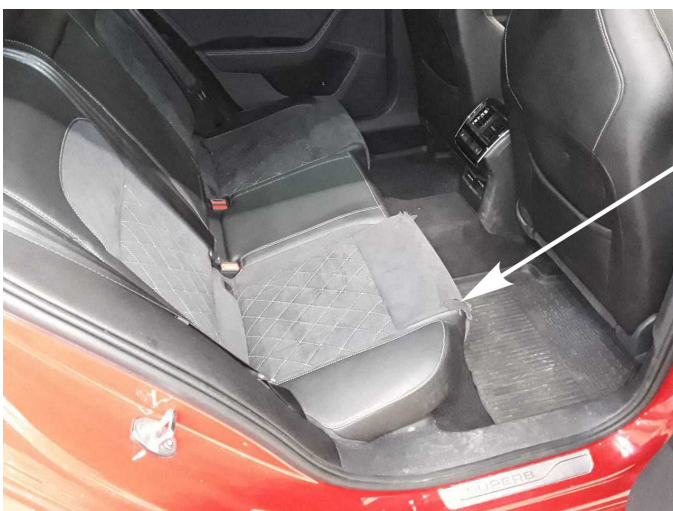
Damage 8: Front bumper: Front bumper - Scratch(es) - Paint



Damage 8: Front bumper: Front bumper - Scratch(es) - Paint



Damage 8: Front bumper: Front bumper - Scratch(es) - Paint



Damage 9: Seat - rear: Back seat (Rechts außen, Sitzbezug komplett) - Broken / torn - Replace



Damage 9: Seat - rear: Back seat (Rechts außen, Sitzbezug komplett) - Broken / torn - Replace



Damage 9: Seat - rear: Back seat (Rechts außen, Sitzbezug komplett) - Broken / torn - Replace



Damage 9: Seat - rear: Back seat (Rechts außen, Sitzbezug komplett) - Broken / torn - Replace



Wear and tear 1: Wheel / tyres: Alloy rim - rear left side - Scratch(es) - No deduction



Wear and tear 1: Wheel / tyres: Alloy rim - rear left side - Scratch(es) - No deduction



Wear and tear 2: Wheel / tyres: Alloy rim - rear right side - Scratch(es) - No deduction



Wear and tear 2: Wheel / tyres: Alloy rim - rear right side - Scratch(es) - No deduction



Wear and tear 2: Wheel / tyres: Alloy rim - rear right side - Scratch(es) - No deduction



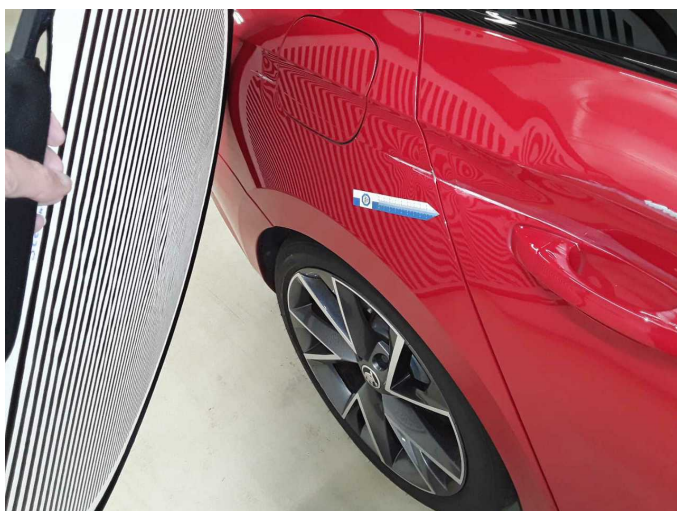
Accident 1: Side right



Accident 1: Side right



Accident 1: Side right



Accident 1: Side right



Accident 1: Side right



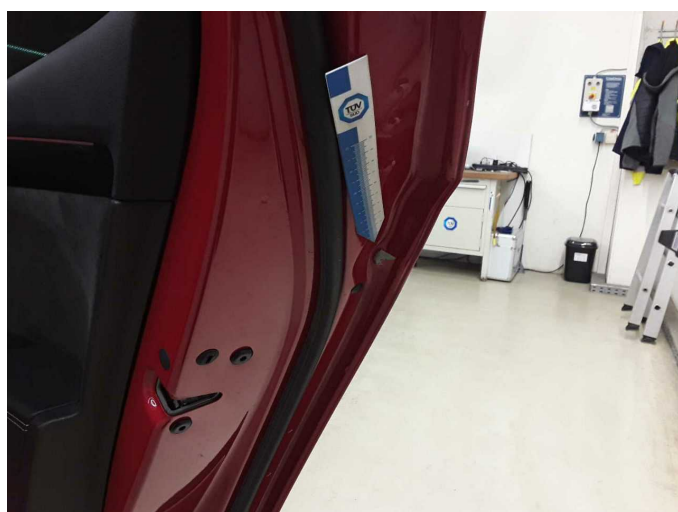
Accident 1: Side right



Accident 1: Side right



Accident 1: Side right



Accident 1: Side right



Wartungshistorie

(gemäß Auftraggeber Informationen)

Fahrgestellnummer: TMBJR9NP7P7037665

Hersteller / Modell: SKODA SKODA Superb Combi 2.0 TDI DSG Sportline

Datum	KM-Stand	Beschreibung
17.03.2026	64.131	Bremse Sonstiges; Bremsflüssigkeit; Bremsflüssigkeit ern; Bremsklötze hinten; Bremsscheiben hinten; HU + AU; Motoröl b. Wartung; Ölfilter ern; Regelwartungsdienst; Wartung Sonstiges
31.01.2025	42.400	Reparatur Sonstiges; Systemtest/Eigendiagnose
04.09.2024	32.453	Motoröl b. Wartung; Ölfilter ern; Regelwartungsdienst; Wartung Sonstiges