

## Expertise

Protocol number: 45783939  
Order No. / Reference: 26311209  
Inspection date: 2 Jun 2026

Manufacturer: Ford

Model: Focus Turnier 1.0 EcoBoost Hybrid TITANIUM EDITION

VIN: WF0PXXGCHPSJ80633



### Vehicle details

#### Manufacturer / Type / Model / Equipment

Ford Focus Turnier 1.0 EcoBoost Hybrid TITANIUM EDITION

**Vehicle Identification number** WF0PXXGCHPSJ80633

**Mileage (Read)** 8,992 km

**First registration** 19 Mar 2025

**Number of holders** 1

**Power / Engine displacement** 92 kw / 999 ccm

**Fuel type / Cylinder** Hybrid Petrol / E / 3

**Gearbox / Number of gears** Manual / 6

**Type of drive** Front drive

**Type of vehicle** Station wagon

**Colour / colour code** Agate Black Metallic

**Doors / Seats** 5 / 5

**Upholstery type** Cloth

**Colour of upholstery** Anthracite



## Vehicle details

<b>Maintenance booklet / proof</b>	digital proof / complete	<b>Next maintenance in</b>	43 %
<b>Key is / should be</b>	2 / 2	<b>FZG documents</b>	ZB#2 (B) was available (copy), ZB#1 (S) was not available.
		<b>Letter No.</b>	HH809712
<b>Previous damage / Accident</b>	None detectable	<b>Repainting</b>	None detectable
<b>Inspection conditions</b>	sufficient	<b>Lifting equipment / pit</b>	No
<b>Test drive</b>	Not performed	<b>Engine function test</b>	Performed
<b>Manufacturer key number/ type code number</b>	8566 / BUC 00155		
<b>Emission standard</b>	EURO6;WLTP;AP;PI/CI; M, N1 I	<b>fine dust sticker</b>	
<b>Permitted total weight</b>	1,970 kg	<b>Empty weight</b>	

## Tyres

### Mounted tyres

#	Tyre size	Type of tyre	Manufacturer	Tread depth
1)	205/60 R16 96V	All-season tyres on Steel rim with wheel cover	Goodyear	7mm / 7mm
2)	205/60 R16 96V	All-season tyres on Steel rim with wheel cover	Goodyear	7mm / 7mm

### Replacement

Typ	Tyre size	Type of tyre	Manufacturer	Tread depth
Tirefit		Expiration date 06/2028		

**Legend: Tread depth information for the left tire is listed first, for the right tire it is listed second on the axle in the direction of travel.**



## Equipment

### Standard equipment

- Airbag: Passenger airbag deactivation
- Exterior mirrors painted in body color, electrically adjustable, heated and foldable
- Hill start assist
- Roof rails, aluminum
- Tachometer
- eCall
- Driver information system with on-board computer, color (10.7 cm screen diagonal)
- Electric parking brake with auto-hold function
- Ford ECO-Coach
- FordPass Connect including live traffic information
- Luggage compartment cover
- Cruise control
- Rubber mats
- Back window, heater
- Interior lighting with LED technology
- Intelligent security system
- Air conditioning with automatic temperature control
- Paint finish: Metallic
- LED headlights
- Steering wheel: 3-spoke design
- Make-up mirrors in driver and passenger sun visors
- MyKey key system (individually programmable second key)
- Navigation: Ford SYNC 4 including Ford navigation system with AppLink, 13.2" touchscreen and DAB/DAB+
- Front and rear parking pilot system
- Post-Collision Assist
- Tire repair kit
- Rear view camera
- Windscreen wipers with rain sensor (sensitivity adjustable)
- Selective driving mode switch
- Seats: Passenger seat, 2-way adjustable
- Seats: Rear seat backrest
- Seats: Front seats can be heated individually and variably.
- 12-volt socket
- Black trim above the side window
- Warning system for unfastened seat belts for the 1st and 2nd rows of seats
- Anti-lock braking system (ABS) with electronic brake force distribution (EBD)
- Tires: 6.5 J x 16 design wheels (4) with 205/60 R16 tires
- Fabric headliner
- Roof spoiler painted in car color
- Third brake light
- Electronic Safety and Stability Program (ESP)
- Lane keeping assist including lane keeping assist
- Electric windows front and rear
- Ford Easy Fuel
- Ford Power Start function
- Heated windshield
- Speed limiter
- Transmission: 6-speed manual transmission
- Illuminated glove compartment
- Rear window wiper
- Interior mirror, automatically dimming
- Isofix bracket
- Headrests: 2 front and 3 rear, height adjustable
- LED taillights
- Heated steering wheel
- Adjustable steering column
- Center console "Premium" front
- Fatigue warning
- Otto particulate filter
- Package: Winter
- Upholstery: Cloth
- Pre-Collision Assist
- Tire Pressure Monitoring System (TPMS)
- Gear knob, Sensico in leather look
- Headlight assistant with day/night sensor
- Electromechanical speed-dependent power steering
- Seats: Driver's seat height adjustable
- Seats: Front sports seats with enhanced lateral support
- Start-stop system
- Carpet floor mats in the front
- Lashing eyes in the luggage compartment
- Electronic immobilizer
- Central locking with remote control and remote luggage compartment release



### Extra equipment

- Tires: 4 all-season tires
- Safety partition net for luggage compartment
- Package: Driver Assistance Package (for manual transmission)  
(Intelligent cruise control, adaptive; traffic sign recognition system; wrong-way driver warning function; evasive steering assist; distance display and distance warning; high beam assist (in conjunction with adaptive LED matrix headlights with glare-free high beam assist); blind spot assist with cross traffic alert including emergency braking function (when reversing out of parking spaces) and trailer detection; reversing camera with split-view technology)

### Brief expert findings

Documents submitted	At the time of the inspection, the vehicle registration certificate Part 2 (title) was available, but the vehicle registration certificate Part 1 (document) was not. (Copy)
VIN comparison	The vehicle identification number (VIN) was read from the vehicle and its conformity with the submitted documents was confirmed by the undersigned during the inspection.
Inspection	The inspection conditions were sufficient for the assessment of the vehicle. No lifting equipment or pit was available for inspecting the vehicle. Therefore, inspection of the vehicle's underside was only possible to a limited extent.
Test drive	No test drive/shunting maneuver was carried out during the inspection of the vehicle.
Engine function test	An engine test run was performed.

### Value reducing factors

No.	Component group	Description
1	Instrument panel	Indicator light (Reifendruckkontrolle) - on - Perform diagnosis
2	Vehicle glazing	Windscreen (Im Fahrersichtfeld) - Stone chips - Replace

### Wear and tear

No.	Component group	Description
1	Rear bumper	Rear bumper - Scratched - No deduction
2	Interior	Interior - Scratched - No deduction
3	Front bumper	Front bumper - Scratched - No deduction

The vehicle shows signs of wear and tear commensurate with its age and use.

### Order/Scope of Order

An order was placed to prepare a sales report for the described vehicle. This report includes the following:

- Description of key vehicle information
- Documentation of equipment features  
(*Delivery by third-party service providers*)
- Documentation of damage, defects, missing parts
- Documentation of prior damage, unrepaired prior damage, repainting
- A brief visual or functional inspection of the equipment details, if possible.  
(*Functional testing of driver assistance systems is not included in the scope of services!*)
- a photographic documentation of the vehicle



## Basis for the order

This product is based on the guidelines for vehicle returns and valuations published by Alphabet Fleet GmbH. The expert makes the specific findings in each individual case objectively, within the framework of the prescribed standards, based on their own expertise.

The vehicle inspection takes place in a fully assembled, unassembled state.

Damage or defects that can only be detected during disassembly/diagnostic work or through further investigation remain within the realm of prognostic risk. An increased risk exists due to concealed defects caused by fraudulent misrepresentation and which were not identifiable by the expert.

Damage or defects resulting from normal use or wear and tear of the vehicle will be accepted in accordance with the applicable standard.

There was no explicit identification or monetary consideration of the expected features within the product.

Features which, in their nature and extent, slightly exceed normal use but do not constitute unacceptable damage, will be documented and indicated as signs of wear, if applicable.

Damage or defects that, according to the applicable standard, can no longer be attributed to normal use or wear and tear are listed under "Value Reducing Factors" in the product description.

Depending on the product specification, a monetary ID can be provided. If this takes place, the costs can be 100% d or pro rata depending on the vehicle's age and mileage.

## Previous damages

No apparent prior damage that had been repaired could be found on the vehicle.

## Comments

- Die Unterbodenbesichtigung war nur ebenerdig & eingeschränkt möglich. Mehrkosten möglich.



Figure 1: Diagonal front (left)



Figure 2: Diagonal front (right)



Figure 3: Diagonal rear (left)



Figure 4: Diagonal rear (right)



Figure 5: Interior - front

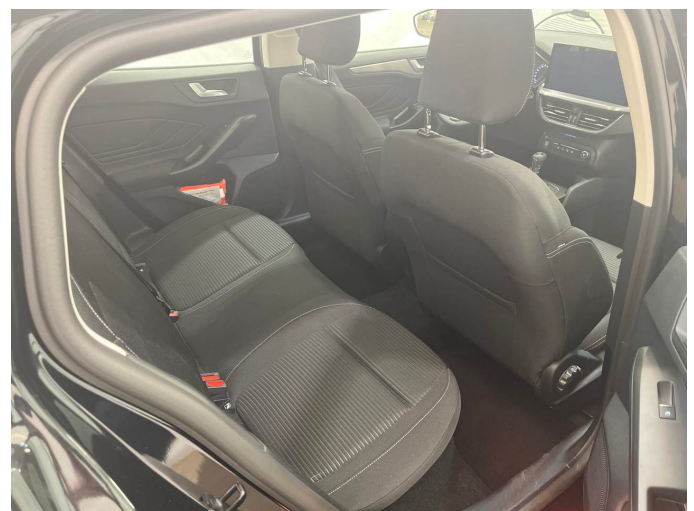


Figure 6: Interior - rear



Figure 7: Instrument cluster



Figure 8: Instrument panel



Figure 9: Interior 360° view



Figure 10: Cargo area



Figure 11: VIN



Figure 12: Mounted tyres



Figure 13: Documents



Figure 14: Documents

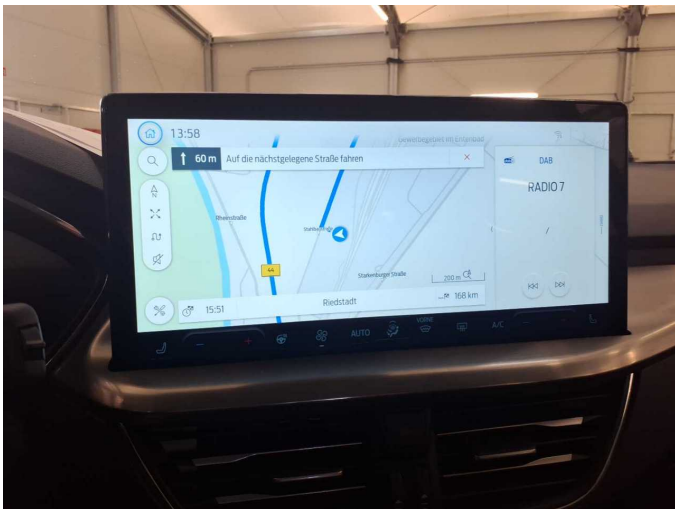


Figure 15: Navigation

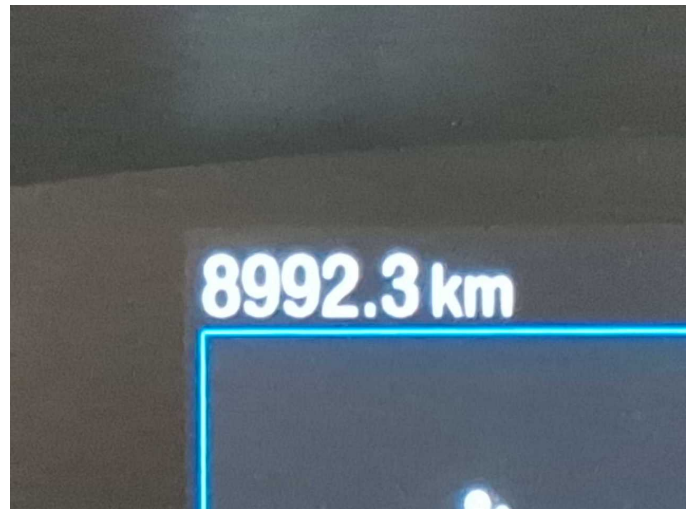


Figure 16: Misc.



Figure 17: Misc.



Figure 18: Misc.



Figure 19: Misc.



Figure 20: Misc.



Figure 21: Misc.



Figure 22: Misc.



Figure 23: Misc.

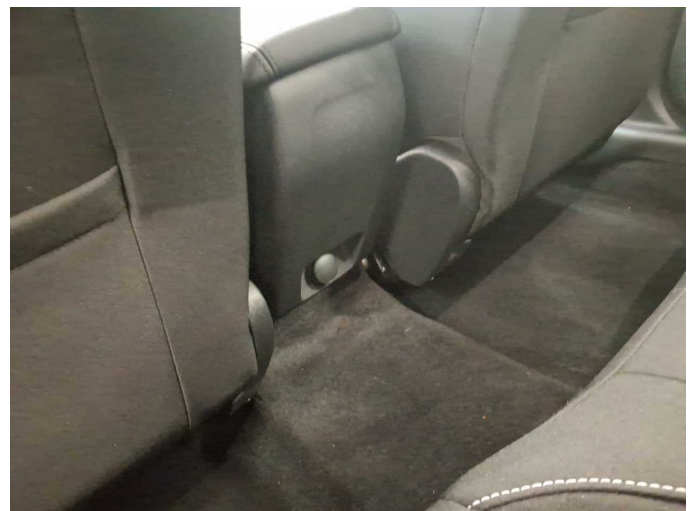


Figure 24: Misc.



Figure 25: Misc.



Figure 26: Misc.

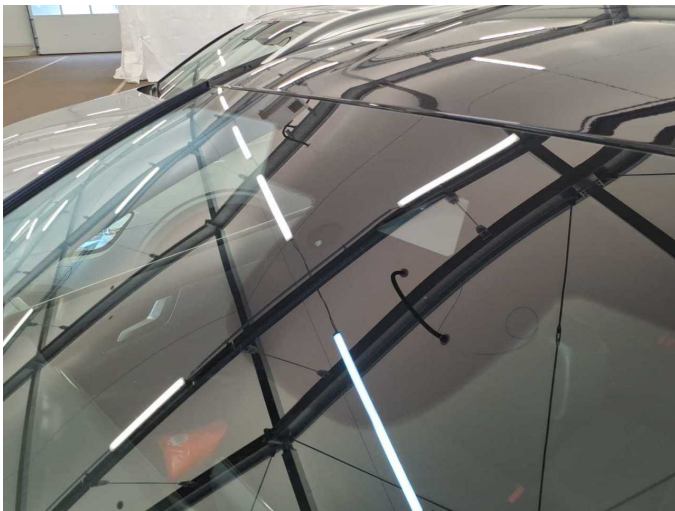


Figure 27: Misc.

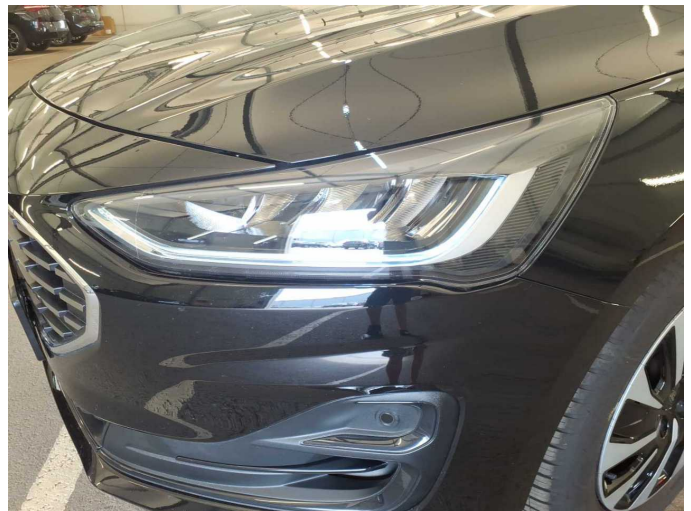


Figure 28: Misc.

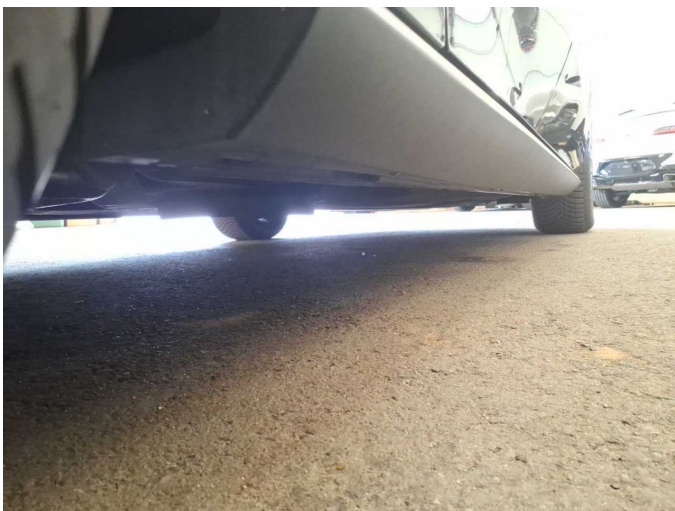


Figure 29: Misc.

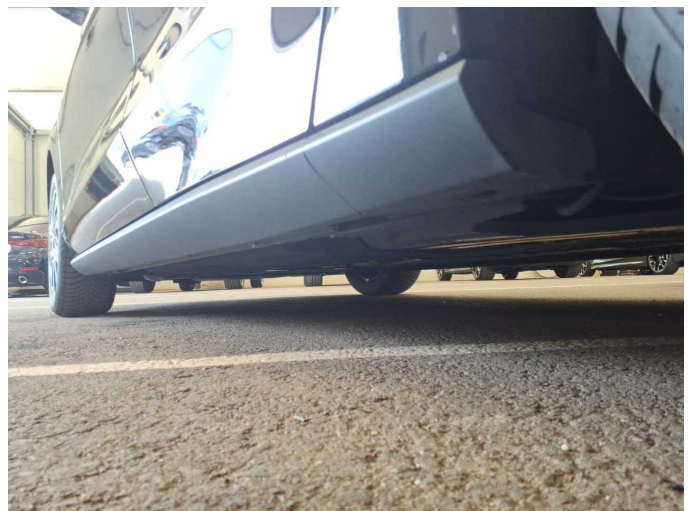
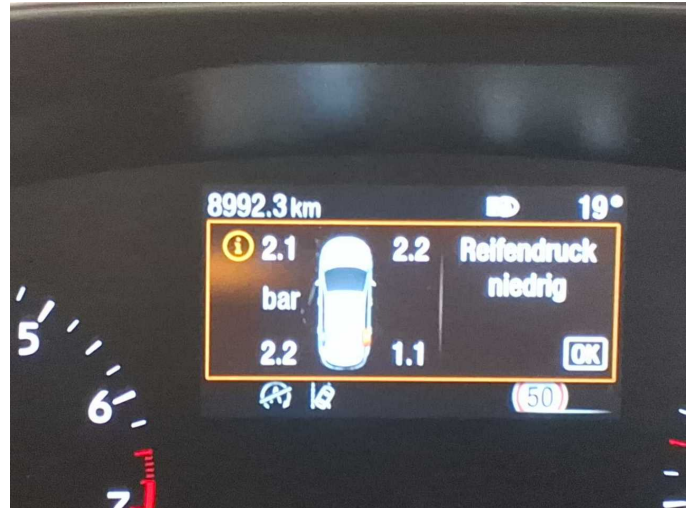


Figure 30: Misc.



**Damage 1:** Instrument panel: Indicator light (Reifendruckkontrolle) - on - Perform diagnosis



**Damage 1:** Instrument panel: Indicator light (Reifendruckkontrolle) - on - Perform diagnosis



**Damage 2:** Vehicle glazing: Windscreen (Im Fahrersichtfeld) - Stone chips - Replace



**Damage 2:** Vehicle glazing: Windscreen (Im Fahrersichtfeld) - Stone chips - Replace