

## Expertise

Protocol number: 46008589  
Order No. / Reference: 26337786  
Inspection date: 16 Jun 2026

Manufacturer: Mercedes-Benz

Model: GLC 300 e 4Matic 9G-TRONIC

VIN: W1N2539531F968741



### Vehicle details

#### Manufacturer / Type / Model / Equipment

Mercedes-Benz GLC 300 e 4Matic 9G-TRONIC

**Vehicle Identification number** W1N2539531F968741

**Mileage (Read)** 167,069 km

**First registration** 6 May 2021

**Number of holders** 1

**Power / Engine displacement** 155 kw / 1,991 ccm

**Fuel type / Cylinder** Hybr.B/E ext.auf1 / 4

**Gearbox / Number of gears** Automatic / 9

**Type of drive** All-wheel drive

**Type of vehicle** Station wagon

**Colour / colour code** SCHWARZ - UNILACK

**Doors / Seats** 5 / 5

**Upholstery type** Leather

**Colour of upholstery** Black



Vehicle details			
<b>Maintenance booklet / proof</b>	Non-existent	<b>Next maintenance in</b>	161 Tag(e)
<b>Last service on / at</b>	11/2025 at 151,786 km		
<b>Key is / should be</b>	2 / 2	<b>FZG documents</b>	ZB#2 (B) was available (copy), ZB#1 (S) was not available.
		<b>Letter No.</b>	GC592327
<b>Previous damage / Accident</b>	Detectable	<b>Repainting</b>	None detectable
<b>Inspection conditions</b>	sufficient	<b>Lifting equipment / pit</b>	No
<b>Test drive</b>	Not performed	<b>Engine function test</b>	Performed
<b>Manufacturer key number/ type code number</b>	2222 / AKU 00049		
<b>Emission standard</b>	EURO6;WLTP;AP;PI/CI; M, N1 I	<b>fine dust sticker</b>	
<b>Permitted total weight</b>	2,615 kg	<b>Empty weight</b>	
<b>Dimensions</b>	4683 x 1930 x 1664		

## Tyres

Mounted tyres				
#	Tyre size	Type of tyre	Manufacturer	Tread depth
1)	235/60 R18 107H	Winter tyres on Light alloy	Goodyear	7mm / 7mm
2)	235/60 R18 107H	Winter tyres on Light alloy	Goodyear	7mm / 7mm
Additional tyres				
#	Tyre size	Type of tyre	Manufacturer	Tread depth
1)	235/55 R19 105W	Summer tyres on Light alloy	Pirelli	6mm / 6mm
2)	235/55 R19 105W	Summer tyres on Light alloy	Pirelli	6mm / 6mm

**Legend: Tread depth information for the left tire is listed first, for the right tire it is listed second on the axle in the direction of travel.**

TÜV SÜD Auto Partner GmbH  
Wiesenring 2  
04159 Leipzig

Inspection location  
Hartmann Fleet Professionals GmbH  
Leerenstraße 25  
29683 Bad Fallingbommel



## Equipment



## Standard equipment

- Airbag for driver and front passenger
- Airbag: Sidebag for driver and front passenger (combined thorax/pelvisbag)
- Acoustic environmental protection (To ensure that your vehicle does not become a danger to pedestrians and cyclists even when driving purely electrically and almost silently, the acoustic environmental protection generates a Mercedes-Benz specific sound outside the vehicle up to a speed of 30 km/h.)
- Anti-lock braking system (ABS)
- Automatic passenger airbag deactivation
- Heated exterior mirrors on the left and right, electrically adjustable from the inside (with aspherically curved mirror glass and integrated turn signal light)
- Roof rails in polished aluminum
- Tachometer
- Third brake light in LED technology
- EASY-Pack cargo cover (removable)
- Driving light assistant
- Electric window regulator, 4-way (with comfort operation and anti-pinch protection)
- Velour floor mats in interior color
- Heated rear window (with timer)
- Interior headliner fabric crystal grey (Only in combination with upholstery in black (001, 101, 221, 301, 651))
- Remote trunk lid release
- Instrument cluster with 2 tubular round instruments, 13.97 cm (5.5") multifunction display
- Communication module (LTE) for using Mercedes me connect services (The communication module (LTE) offers you a clear increase in comfort and safety. It constantly connects the vehicle to the internet – so that you can use helpful services such as the Live Traffic Information from Mercedes me connect. Two mobile antennas and an LTE-enabled SIM card ensure a fast connection.)
- LED High Performance headlights (with integrated daytime running lights, LED taillights)
- Steering column mechanically adjustable in height and length
- Navigation accessories: Extended MBUX functions (personalization (profiles) and prediction functions - LINGUATRONIC with natural language understanding - activation via "Hey Mercedes" - Wi-Fi hotspot - internet radio)
- Package: Chrome (radiator grille with integrated Mercedes star and 2 louvers in matte iridium silver with chrome inserts, visual underguard front and rear in chrome, roof rails in polished aluminum, surface-mounted, beltline trim strip in polished aluminum, window surrounds in polished aluminum, exhaust system with 2 visible tailpipe trims in stainless steel, permanently integrated into the bumper)
- Radio accessories: Digital radio
- Tire pressure monitoring system (TPMS)
- Airbag: Kneebag for driver
- Airbag: Windowbags
- Active Brake Assist (can help avoid rear-end collisions with vehicles ahead, whether moving or stationary, as well as collisions with moving pedestrians and cyclists. In addition to distance and collision warnings, it primarily offers brake boosting – up to and including autonomous emergency braking.)
- 4MATIC all-wheel drive
- ATTENTION ASSIST (can detect typical signs of fatigue through driver behavior and warn the driver of increasing fatigue or inattentiveness)
- On-board computer
- Brake system with larger brake discs on the front axle (drilled front brake discs and front brake calipers with Mercedes-Benz lettering).
- DYNAMIC SELECT
- Electronic Stability Program (ESP)
- Chassis with higher ground clearance (In this chassis variant, the body is raised by 20 mm)
- electric parking brake
- Transmission: 9G-TRONIC
- rear window wiper
- KEYLESS-GO start function
- Climate: THERMATIC automatic climate control with 2 climate zones (The THERMATIC automatic climate control with 2 climate zones offers individual climate comfort in the front seats: driver and front passenger can set the temperature separately for their side. Thanks to the automatic climate control and the sensitive sensor system, this is kept constant without any manual adjustments.)
- Headrests adjustable in 5 ways (4-way for driver and front passenger, and 2-way in the rear)
- Paint finish: Solid
- Charging system: AC on-board charger (AC charging)
- Steering wheel: Multifunction sports steering wheel in 3-spoke design in black leather (with black decorative stitching and two-piece front trim in silver chrome)
- Mercedes-Benz emergency call system
- Otto particulate filter
- Package: Storage (map pockets on the back of the front seats - net on the load floor - folding box under the load floor - 12V socket in the load compartment on the left - cargo bars - two USB-C ports in the rear)
- Package: Interior lighting (More light, more atmosphere, better orientation: The interior lighting package provides more comprehensive direct and indirect lighting. The additional light elements create a pleasant atmosphere and make operation easier.)
- Upholstery: Aberdeen fabric, black
- Radio: MBUX multimedia system



- Remote Services Plus (The Remote Services Plus package transforms mobility into a new experience, offering greater comfort and safety. Status queries provide information about the remaining range. You can remotely control certain functions and locate your vehicle. Services such as maintenance management coordinate service appointments, saving you valuable time.)
- Windscreen wipers with rain sensor
- Seats: Folding rear seat backrests (40/20/40 split including Easy Pack Quickfold and center armrest with double cupholder and storage compartment)
- Cruise control (Drive relaxed and fuel-efficiently, especially on longer journeys. Simply select your desired speed and your vehicle will regulate it. In addition to the cruising speed, the speed limiter helps you maintain a maximum speed. This increases road safety and protects you from expensive speeding tickets.)
- Decorative elements: Piano lacquer look in high-gloss black

### Extra equipment

- Towbar with ESP trailer stabilization
- Charging cable for household socket, 5m, smooth (This charging cable, also called Mode 2 cable, allows you to charge the vehicle battery at the household socket with up to 2.3 kW (230 V, 1-phase, 10 A) and fits sockets of type E/F CEE 7/7.)
- Package: Business (for plug-in hybrid vehicles) (Advanced Parking Package: Active Parking Assist PARKTRONIC with reversing camera; Advanced Infotainment Package: Media display with touch operation, smartphone integration - Apple CarPlay and Android Auto, connectivity package navigation, traffic sign assist; Comfort Package: Heated seats for driver and front passenger, seat comfort package - electric and manual adjustment options for the front seats)
- Package: Mirrors (Electrically folding exterior mirrors, lowering right exterior mirror, automatic dimming function)
- Upholstery: Black leather
- Radio accessories: Advanced sound system (9 speakers and 225 watts system power. The sound system enhances your driving pleasure acoustically. The speaker system, precisely tuned to the interior, offers dynamic music playback.)
- Seats: Seat climate control for driver and front passenger in conjunction with comfort packages (with seat heating and seat ventilation)

- Radio accessories: Touchpad (integrated into the center console, including a hand rest - single and multi-finger gestures, swiping movements and zoom gestures by spreading and pinching the fingers - recognizes handwritten characters: letters, special characters and numbers - clear haptic feedback)
- Wheels: 45.7 cm (18") alloy wheels, 4-piece set in 10-spoke design (vanadium silver painted with 235/60 R18 tires, 8 J x 18 ET 38)
- Power steering
- Seats: i-Size child restraint system on the outer rear seats
- Seats: Front seats electrically adjustable (with electric adjustment for seat height and backrest angle, as well as mechanical adjustment for longitudinal adjustment and headrests)
- High-visibility vest for drivers
- Immobiliser
- Central locking (with interior switch, automatic locking (can be deactivated) and crash sensor with emergency opening)

- Paint finish: Special paint finish, solid color
- Steering wheel: Steering wheel heating
- Navigation accessories: Pre-installation for Live Traffic Information
- Package: Advanced Infotainment
- Package: Advanced Park
- Package: High End Comfort (Seat heating for driver and front passenger, driver's seat electrically adjustable with memory function, front right seat electrically adjustable with memory function, multi-contour seat package: individually adjustable air chambers, massage effect in the lumbar region)
- Package: Night for standard exterior equipment (radiator grille with 2 louvers in high-gloss black with chrome inserts, 48.3 cm (19") 6-spoke alloy wheels, painted high-gloss black and polished with 235/55 R 19 tires on 8 J x 19 ET 38 rims, roof rails in black, front and rear underguards painted black, exterior mirror housings painted high-gloss black, beltline trim and window surrounds in high-gloss black, heat-insulating dark tinted glass from the B-pillar back)
- Wheels: 48.3 cm (19") alloy wheels, 4-spoke design
- Heated windshield washer system
- Seats: Seat climate control for driver and front passenger seats
- Partition net for luggage compartment separation (and occupant protection)

### Brief expert findings

Documents submitted	At the time of the inspection, the vehicle registration certificate Part 2 (title) was available, but the vehicle registration certificate Part 1 (document) was not. (Copy)
VIN comparison	The vehicle identification number (VIN) was read from the vehicle and its conformity with the submitted documents was confirmed by the undersigned during the inspection.
Inspection	The inspection conditions were sufficient for the assessment of the vehicle. No lifting equipment or pit was available for inspecting the vehicle. Therefore, inspection of the vehicle's underside was only possible to a limited extent.
Test drive	No test drive/shunting maneuver was carried out during the inspection of the vehicle.
Engine function test	An engine test run was performed.



## Value reducing factors

No.	Component group	Description
1	Body	C-pillar - right side - Scratch(es) - Smart repair
2	Rear bumper	Rear bumper - Scratch(es) - Smart repair
3	Rear bumper	Spoiler - Scratch(es) - Smart repair
4	Bonnet	Insulation lining - Damage caused by marten / rodent - Replace
5	Door - rear left side	Door - Dent / paintcoat damage - Repair and paint
6	Bonnet	Bonnet - Scratch(es) - Paint
7	Door - front left side	Door - Dent / paintcoat damage - Repair and paint

## Wear and tear

No.	Component group	Description
1	Vehicle glazing	Windscreen - Stone chips - No deduction
2	Front bumper	Front bumper - Stone chips - No deduction

The vehicle shows signs of wear and tear commensurate with its age and use.

## Previous damages

No.	Previous damage	Extent of damage (Net)
1	Side - left, Provided by user / customer, from 9 Jun 2021	1.962,15 €

## Order/Scope of Order

An order was placed to prepare a sales report for the described vehicle. This report includes the following:

- Description of key vehicle information
- Documentation of equipment features  
(*Delivery by third-party service providers*)
- Documentation of damage, defects, missing parts
- Documentation of prior damage, unrepaired prior damage, repainting
- A brief visual or functional inspection of the equipment details, if possible.  
(*Functional testing of driver assistance systems is not included in the scope of services!*)
- a photographic documentation of the vehicle



## Basis for the order

This product is based on the guidelines for vehicle returns and valuations published by Alphabet Fleet GmbH. The expert makes the specific findings in each individual case objectively, within the framework of the prescribed standards, based on their own expertise.

The vehicle inspection takes place in a fully assembled, unassembled state.

Damage or defects that can only be detected during disassembly/diagnostic work or through further investigation remain within the realm of prognostic risk. An increased risk exists due to concealed defects caused by fraudulent misrepresentation and which were not identifiable by the expert.

Damage or defects resulting from normal use or wear and tear of the vehicle will be accepted in accordance with the applicable standard.

There was no explicit identification or monetary consideration of the expected features within the product.

Features which, in their nature and extent, slightly exceed normal use but do not constitute unacceptable damage, will be documented and indicated as signs of wear, if applicable.

Damage or defects that, according to the applicable standard, can no longer be attributed to normal use or wear and tear are listed under "Value Reducing Factors" in the product description.

Depending on the product specification, a monetary ID can be provided. If this takes place, the costs can be 100% or pro rata depending on the vehicle's age and mileage.

## Previous damages

According to available information previous damages were repaired at the vehicle. Traces of repairs, which allow conclusions about the area of repair, were not recognizable during the inspection.

## Comments

- Winterradsatz ist kein Bestandteil des Auslieferungsumfangs.



Figure 1: Diagonal front (left)



Figure 2: Diagonal front (right)



Figure 3: Diagonal rear (left)



Figure 4: Diagonal rear (right)



Figure 5: Interior - front



Figure 6: Interior - rear



Figure 7: Instrument cluster



Figure 8: Instrument panel



Figure 9: Interior 360° view



Figure 10: Cargo area

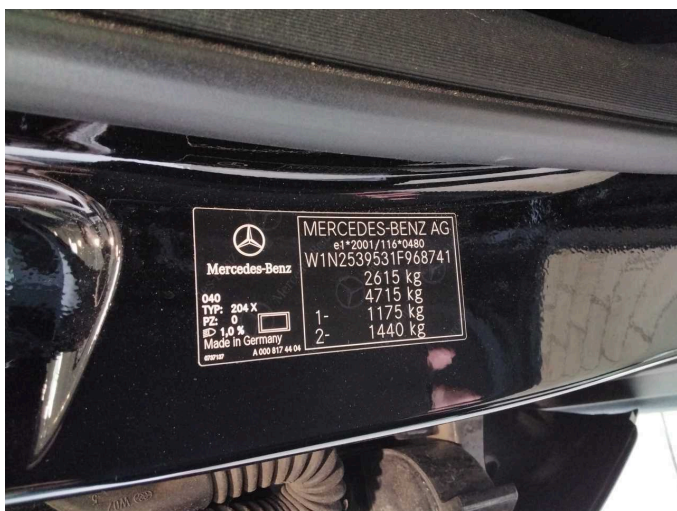


Figure 11: VIN



Figure 12: Mounted tyres



Figure 13: Documents



Figure 14: Additional tyres



Figure 15: Additional tyres

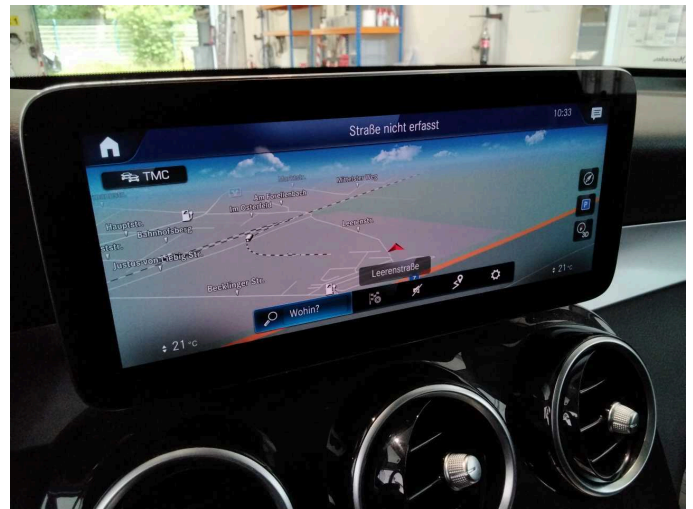


Figure 16: Navigation



Figure 17: Misc.



Figure 18: Misc.



Figure 19: Misc.



Figure 20: Misc.



Figure 21: Misc.



Figure 22: Misc.



Figure 23: Misc.



Figure 24: Misc.



Figure 25: Misc.



Figure 26: Misc.



Figure 27: Misc.



Figure 28: Misc.

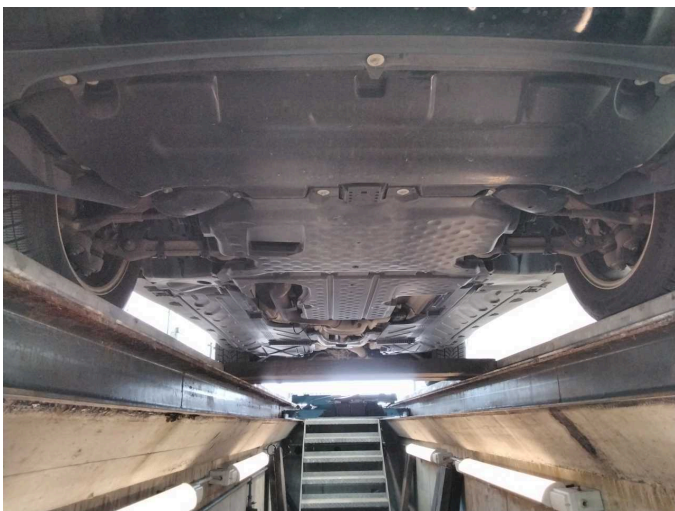


Figure 29: Misc.



Figure 30: Misc.



**Damage 1:** Body: C-pillar - right side - Scratch(es) - Smart repair



**Damage 1:** Body: C-pillar - right side - Scratch(es) - Smart repair



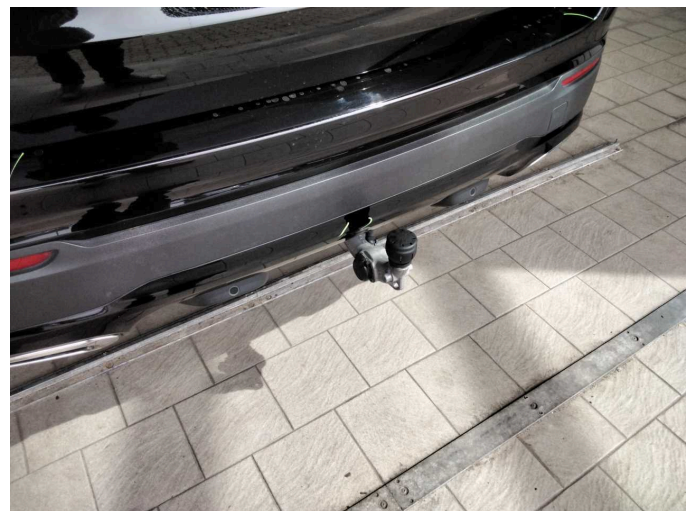
**Damage 2:** Rear bumper: Rear bumper - Scratch(es) - Smart repair



**Damage 2:** Rear bumper: Rear bumper - Scratch(es) - Smart repair



**Damage 2:** Rear bumper: Rear bumper - Scratch(es) - Smart repair



**Damage 3:** Rear bumper: Spoiler - Scratch(es) - Smart repair



**Damage 3:** Rear bumper: Spoiler - Scratch(es) - Smart repair



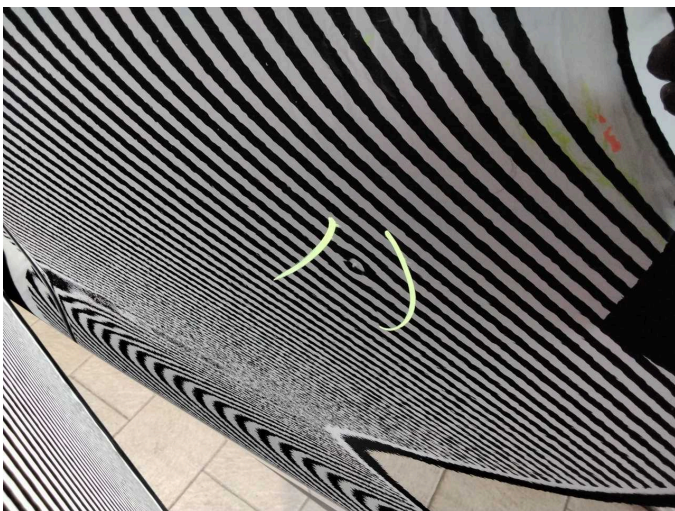
**Damage 4:** Bonnet: Insulation lining - Damage caused by marten / rodent - Replace



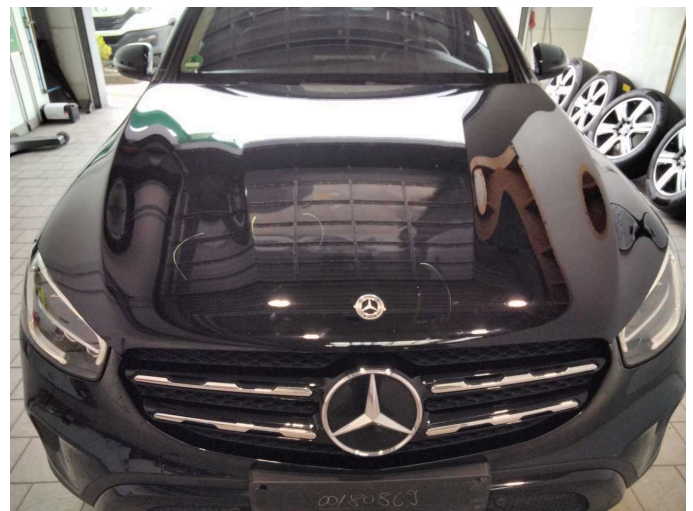
**Damage 5:** Door - rear left side: Door - Dent / paintcoat damage - Repair and paint



**Damage 5:** Door - rear left side: Door - Dent / paintcoat damage - Repair and paint



**Damage 5:** Door - rear left side: Door - Dent / paintcoat damage - Repair and paint



**Damage 6:** Bonnet: Bonnet - Scratch(es) - Paint



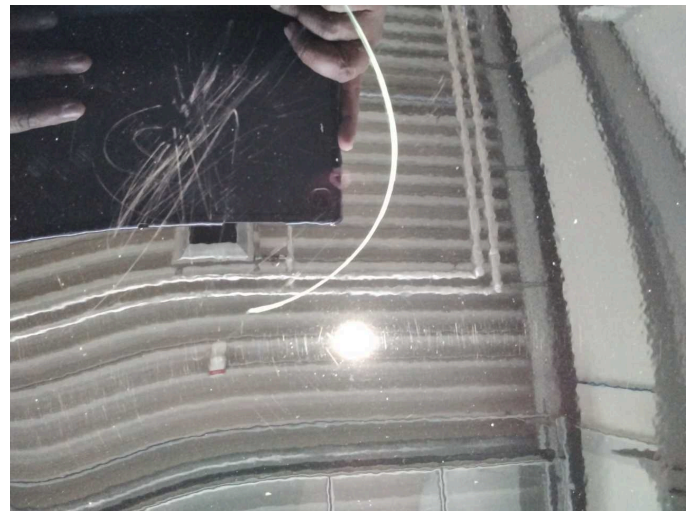
**Damage 6:** Bonnet: Bonnet - Scratch(es) - Paint



**Damage 6:** Bonnet: Bonnet - Scratch(es) - Paint



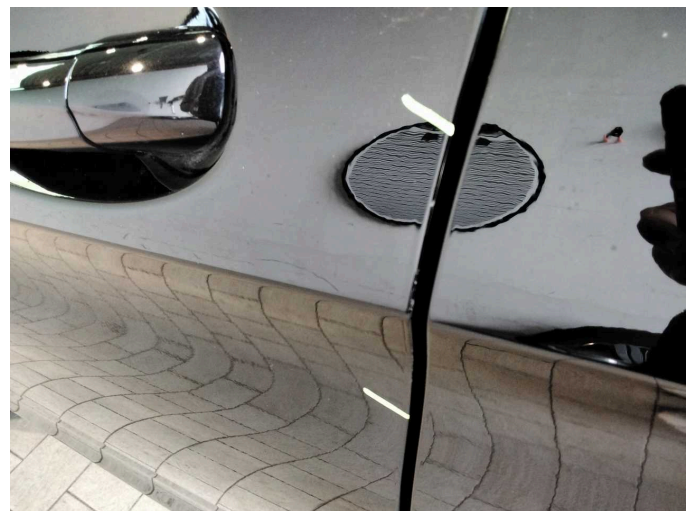
**Damage 6:** Bonnet: Bonnet - Scratch(es) - Paint



**Damage 6:** Bonnet: Bonnet - Scratch(es) - Paint



**Damage 7:** Door - front left side: Door - Dent / paintcoat damage - Repair and paint



**Damage 7:** Door - front left side: Door - Dent / paintcoat damage - Repair and paint



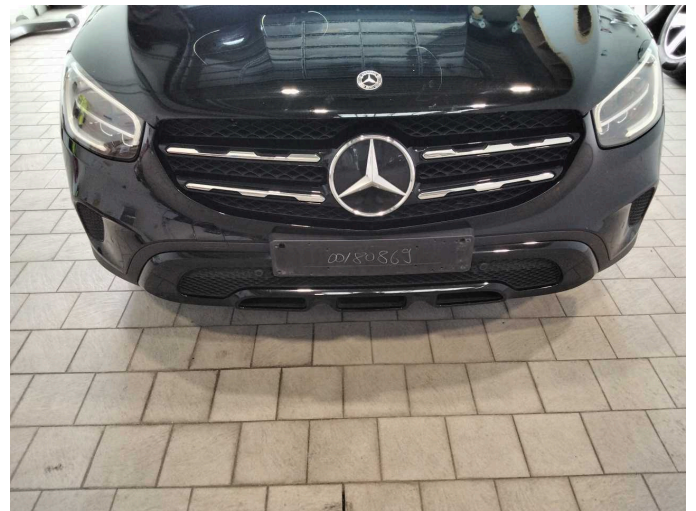
**Damage 7:** Door - front left side: Door - Dent / paintcoat damage - Repair and paint



**Damage 7:** Door - front left side: Door - Dent / paintcoat damage - Repair and paint



**Wear and tear 1:** Vehicle glazing: Windscreen - Stone chips - No deduction



**Wear and tear 2:** Front bumper: Front bumper - Stone chips - No deduction