

Expertise

Protocol number: 45920095
Order No. / Reference: 26443116
Inspection date: 11 Jun 2026

Manufacturer: Peugeot

Model: 508 SW Plug-In Hybrid 225 e-EAT8 GT

VIN: VR3F4DGZTPY554931



Vehicle details

Manufacturer / Type / Model / Equipment

Peugeot 508 SW Plug-In Hybrid 225 e-EAT8 GT

Vehicle Identification number VR3F4DGZTPY554931

Mileage (Read) 82,759 km

First registration 11 Jul 2023

Number of holders 1

Power / Engine displacement 133 kw / 1,598 ccm

Fuel type / Cylinder Hybr.B/E ext.auf / 4

Gearbox / Number of gears Automatic / 8

Type of drive Front drive

Type of vehicle Station wagon

Colour / colour code TYPE HABILLAGE
EXTERIEUR
METALLISEE VERNIS

Doors / Seats 5 / 5

Upholstery type Cloth / leather
combination

Colour of upholstery Black-Dark grey



Vehicle details			
Maintenance booklet / proof	digital evidence / incomplete	Next maintenance in	6 Monat(e)
Last service on / at	12/2025 at 66,599 km		
Key is / should be	2 / 2	FZG documents	ZB#2 (B) was available (copy), ZB#1 (S) was not available.
		Letter No.	GG068330
Previous damage / Accident	None detectable	Repainting	None detectable
Inspection conditions	sufficient	Lifting equipment / pit	No
Test drive	Not performed	Engine function test	Performed
Manufacturer key number/ type code number	1889 / ADY 00033		
Emission standard	EURO6;WLTP;AP;PI/CI; M, N1 I	fine dust sticker	
Permitted total weight	2,290 kg	Empty weight	

Tyres

Mounted tyres				
#	Tyre size	Type of tyre	Manufacturer	Tread depth
1)	215/55 R17 98V	Winter tyres on Light alloy	Continental	5mm / 5mm
2)	215/55 R17 98V	Winter tyres on Light alloy	Continental	5mm / 5mm
Additional tyres				
#	Tyre size	Type of tyre	Manufacturer	Tread depth
1)	235/45 R18 98Y	Summer tyres on Light alloy	Michelin	1mm / 1mm
2)	235/45 R18 98Y	Summer tyres on Light alloy	Michelin	1mm / 1mm
Replacement				
Typ	Tyre size	Type of tyre	Manufacturer	Tread depth
	Tirefit	Expiration date 10/2028		

Legend: Tread depth information for the left tire is listed first, for the right tire it is listed second on the axle in the direction of travel.

TÜV SÜD Auto Partner GmbH
Wiesenring 2
04159 Leipzig

Inspection location
Hartmann Fleet Professionals GmbH
Leerenstraße 25
29683 Bad Fallingbommel



Equipment



Standard equipment

- ABS (Anti-lock Braking System)
- Airbag for driver and front passenger
- Airbag: Curtain airbags front and rear
- Adaptive Cruise Control (ACC) with Stop & Go function
- Electrically adjustable, heated and folding exterior mirrors (with LED approach lighting - integrated LED turn signals)
- Hill start assist
- On-board computer
- Black headliner
- Decorative inserts in carbon look (for door panels and dashboard)
- Dual exhaust with chrome-plated tailpipes
- Rear parking aid, acoustic and visual
- Electronic Stability Program (ESP) (with ASR (traction control))
- High beam assist
- Follow-me-home function (automatic)
- front and rear floor mats
- luggage compartment roller blind
- Transmission: 8-speed automatic transmission EAT8
- Seat belts: 3-point seat belts in all seats (height-adjustable three-point seat belts with belt locks - pyrotechnic belt tensioners and electrically controlled belt force limiters - safety-optimized front headrests - warning light and warning signal for unfastened or unfastened seat belts for driver, front passenger and rear passengers - rear seats: 3 three-point seat belts - belt force limiters on the side seats - Isofix child seat anchors on the outer seats)
- Keyless system (keyless access and start system)
- Automatic climate control (2 zones) (separately adjustable for driver and front passenger)
- Charging cable: Mode 2 charging cable (Type 2, up to 2.3 kW), 6 meters long
- Blue LED ambient lighting on the front door panels
- LED lighting in the front footwell
- LED taillights with dynamic illumination of the three claws
- LED matrix headlights (Adaptive LED matrix headlights with individual light distribution and the following functions: - Automatic headlight range control - City light - Highway light - Country road light - Fog light)
- Steering wheel: Paddle shifters on the steering wheel
- light sensor
- Rear center armrest with pass-through flap
- Multifunctional touchscreen with 10-inch HD color display (capacitive screen - 7 toggle switches, access to key functions such as radio, air conditioning, navigation system, vehicle settings, phone and connectivity)
- Fatigue warning system with fatigue detection
- Emergency brake assist (with automatic activation of the hazard warning lights)
- On-board charger 3.7 kW, 1-phase
- Aluminum pedals and stainless steel door sills
- Active Safety Brake Plus
- Airbag: Side airbag
- Active Blind Spot Assist
- Automatically dimming exterior mirrors
- Exterior mirrors in Perla Nera Black
- Illuminated glove compartment
- Turn signals with lane change indicator function
- third brake light
- Roof rails in high-gloss black
- Digital instrument cluster with high-resolution 12.3" screen, adjustable and customizable
- EBV (Electronic Brakeforce Distribution)
- Front parking aid, acoustic and visual
- Electric front and rear windows (with comfort operation and anti-pinch protection)
- electric parking brake
- Front collision warning
- Guide rails in the trunk
- Cruise control system with speed limiter
- Cup holder in the center console
- Heated rear window
- Rear window and side windows in the second row are more heavily tinted.
- rear window wiper
- Rear apron with diffuser look in black
- Interior mirror automatically dimming
- Frameless interior mirror
- Map pockets on the front seatbacks
- Manual child lock
- Height-adjustable headrests
- Paint finish: Solid
- LED ambient lighting in the front footwell
- Blue LED ambient lighting on the dashboard (under the center console and the cup holder)
- LED ceiling lighting at the front (2 reading lights at the front and rear)
- LED daytime running lights
- "Sperone" 18" alloy wheels, two-tone (with 235/45 R 18 98Y tires)
- Steering wheel: Small multifunction leather steering wheel, flattened at the top and bottom.
- Makeup mirror (illuminated for driver and front passenger)
- Front center armrests with illuminated storage compartment
- Multimedia: Mirror Screen (Transfer of multimedia content and apps from a compatible smartphone to the vehicle's touchscreen, allowing direct control of compatible functions and apps - CarPlay (for compatible Apple iPhone models) - Android Auto (for compatible smartphone models with Android operating system))
- Particle filter: OPF (Otto particulate filter)



- Peugeot i-Connect Advanced: (Infotainment system, up to 8 profiles and 2 smartphones simultaneously via Bluetooth, BiTuner, 6 speakers, DAB+ digital radio reception, MP3-compatible - 2 USB ports (Type A) in the 2nd row - 2 USB ports (Type C) in the front, Navigation system - Real-time navigation by TomTom Services - Voice recognition for navigation, telephone and media - Touchscreen operation - PEUGEOT Connect Box - Over-the-air map updates - Map transfer to the digital instrument cluster)
- Wheels: Tire repair kit (compressor + tire sealant spray)
- Electric power steering
- Seats: Ergonomic comfort seats with AGR seal of approval (extendable thigh support - electric seat tilt adjustment - front seat heating)
- Seats: Rear seats (3 three-point safety belts - belt force limiters on the side seats - Isofix child seat anchors on the outer seats)
- Sport mode (to activate the following functions: - Power steering indicator color in the instrument cluster to red - More responsive accelerator pedal response - More responsive power steering - Increased engine noise)
- Lane keeping assist with steering intervention
- Lane Positioning Assistant
- Technical features: Plug-in hybrid version (Acoustic pedestrian warning system (AVAS), pressure tank system including switch for opening the fuel filler flap, selectable driving modes: Electric/Hybrid/Sport, preconditioning function, HYBRID logo on the fenders and tailgate, functions (Brake) and (e-Save) for energy recovery when releasing the accelerator pedal and for preserving purely electric range (10 km, 20 km or the full charging capacity))
- Decorative trim in high-gloss black on the side windows
- Peugeot Connect Box (with the free telematics services Peugeot Connect SOS and Peugeot Connect Assistance - GPS module - Integrated European SIM card - Speaker and microphone - Emergency battery)
- Upholstery: Alcantara/synthetic leather
- Upholstery: Decorative stitching in Aikini on the dashboard, (on the center console, on the armrests and on the floor mats)
- Rain sensor
- Tire pressure monitoring system
- Wheels: Anti-theft wheel bolts
- Reversing camera with 360° surround view
- Seats: Passenger seat height adjustable
- Seats: Driver's seat height adjustable
- Seats: Electrically adjustable lumbar support
- Seats: Rear bench seat and backrest 40/60 split folding (Magic Flat System with control element in the boot)
- Seats: Front seats (three-point seat belts, height-adjustable, with belt locks - pyrotechnic belt tensioners and electronically controlled belt force limiters - warning light and warning signal for driver and front passenger when seat belt is not fastened or is unfastened - safety-optimized front headrests - Isofix child seat anchors on the front passenger seat)
- 12-volt socket
- Glazing: Laminated glass windshield, noise-reducing
- Traffic sign recognition (with display of the speed recommendation in the instrument cluster (additional recognition of stop signs, one-way street signs and the beginning and end of no-overtaking zones))
- Immobiliser
- Central locking activated from inside with remote control (doors lock automatically when driving off)

Extra equipment

- Paint finish: Metallic
- On-board charger 7.4 kW, 1-phase

Brief expert findings

Documents submitted	At the time of the inspection, the vehicle registration certificate Part 2 (title) was available, but the vehicle registration certificate Part 1 (document) was not. (Copy)
VIN comparison	The vehicle identification number (VIN) was read from the vehicle and its conformity with the submitted documents was confirmed by the undersigned during the inspection.
Inspection	The inspection conditions were sufficient for the assessment of the vehicle. No lifting equipment or pit was available for inspecting the vehicle. Therefore, inspection of the vehicle's underside was only possible to a limited extent.
Test drive	No test drive/shunting maneuver was carried out during the inspection of the vehicle.
Engine function test	An engine test run was performed.



Value reducing factors

No.	Component group	Description
1	Wing mirror - left side	Cap - Scratch(es) - Smart repair
2	Side panel - rear left side	Side panel - dent(s) - Smooth repair work
3	Roof	Roof rail - right side - dent(s) - Smooth repair work
4	Trim / covers	Door trim - rear left side - Scratch(es) - Smart repair
5	Rear bumper	Rear bumper - Scratch(es) - Smart repair
6	Side panel - rear right side	Side panel - dent(s) - Smart repair
7	2nd wheel set	1 alloy rim - Scratch(es) - Loss in value
8	2nd wheel set	1 alloy rim - Scratch(es) - Replace
9	2nd wheel set	Tyres - complete set - Worn - Replace
10	Door - front left side	Door - Dent / paintcoat damage - Repair and paint
11	Door - front right side	Door - Dent / paintcoat damage - Repair and paint
12	Front bumper	Front bumper - Scratch(es) - Paint

Wear and tear

No.	Component group	Description
1	Roof	Roof - dent(s) - No deduction
2	Door - rear left side	Door - dent(s) - No deduction
3	Vehicle glazing	Windscreen - Stone chips - No deduction
4	Bonnet	Bonnet - Stone chips - No deduction
5	Instrument panel	Centre console - front - Scratch(es) - No deduction

The vehicle shows signs of wear and tear commensurate with its age and use.

Order/Scope of Order

An order was placed to prepare a sales report for the described vehicle. This report includes the following:

- Description of key vehicle information
- Documentation of equipment features
(*Delivery by third-party service providers*)
- Documentation of damage, defects, missing parts
- Documentation of prior damage, unrepaired prior damage, repainting
- A brief visual or functional inspection of the equipment details, if possible.
(*Functional testing of driver assistance systems is not included in the scope of services!*)
- a photographic documentation of the vehicle



Basis for the order

This product is based on the guidelines for vehicle returns and valuations published by Alphabet Fleet GmbH. The expert makes the specific findings in each individual case objectively, within the framework of the prescribed standards, based on their own expertise.

The vehicle inspection takes place in a fully assembled, unassembled state.

Damage or defects that can only be detected during disassembly/diagnostic work or through further investigation remain within the realm of prognostic risk. An increased risk exists due to concealed defects caused by fraudulent misrepresentation and which were not identifiable by the expert.

Damage or defects resulting from normal use or wear and tear of the vehicle will be accepted in accordance with the applicable standard.

There was no explicit identification or monetary consideration of the expected features within the product.

Features which, in their nature and extent, slightly exceed normal use but do not constitute unacceptable damage, will be documented and indicated as signs of wear, if applicable.

Damage or defects that, according to the applicable standard, can no longer be attributed to normal use or wear and tear are listed under "Value Reducing Factors" in the product description.

Depending on the product specification, a monetary ID can be provided. If this takes place, the costs can be 100% d or pro rata depending on the vehicle's age and mileage.

Previous damages

No apparent prior damage that had been repaired could be found on the vehicle.



Figure 1: Diagonal front (left)



Figure 2: Diagonal front (right)



Figure 3: Diagonal rear (left)



Figure 4: Diagonal rear (right)



Figure 5: Interior - front



Figure 6: Interior - rear



Figure 7: Instrument cluster



Figure 8: Instrument panel



Figure 9: Interior 360° view



Figure 10: Cargo area

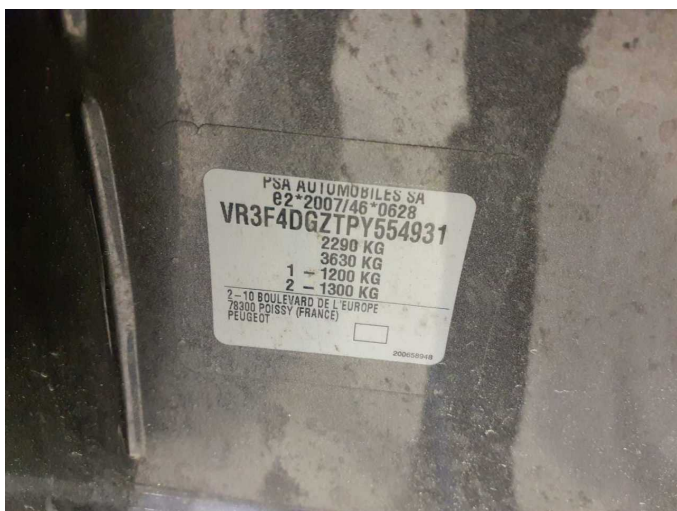


Figure 11: VIN



Figure 12: Mounted tyres



Figure 13: Documents



Figure 14: Additional tyres



Figure 15: Additional tyres

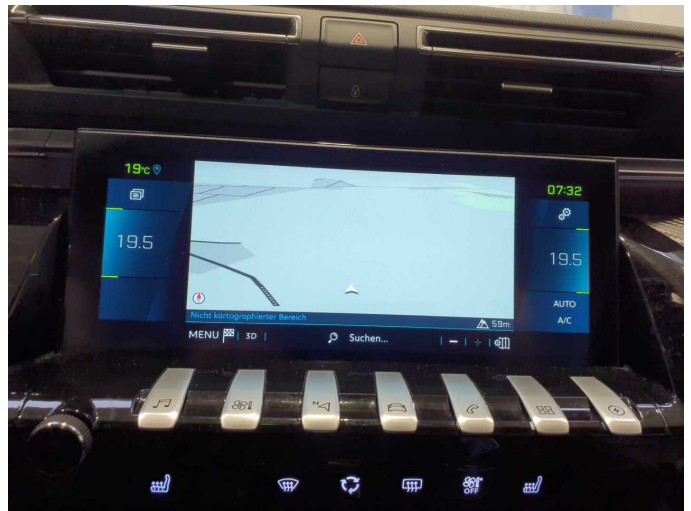


Figure 16: Navigation



Figure 17: Misc.



Figure 18: Misc.



Figure 19: Misc.



Figure 20: Misc.



Figure 21: Misc.



Figure 22: Misc.



Figure 23: Misc.

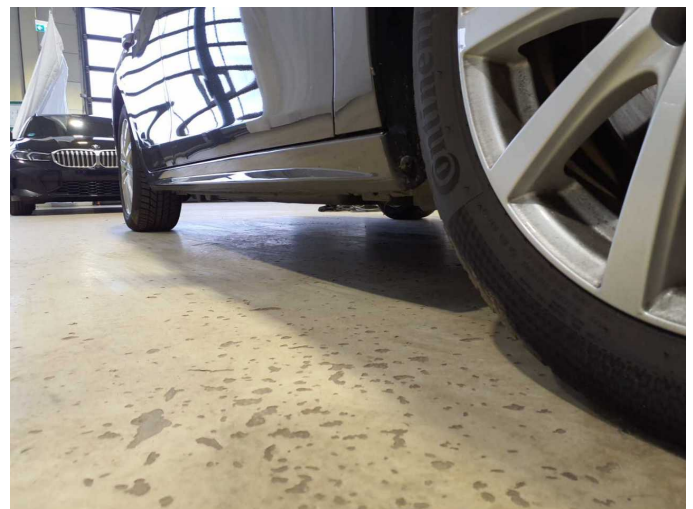


Figure 24: Misc.



Figure 25: Misc.



Figure 26: Misc.



Figure 27: Misc.



Figure 28: Misc.



Damage 1: Wing mirror - left side: Cap - Scratch(es) - Smart repair



Damage 1: Wing mirror - left side: Cap - Scratch(es) - Smart repair



Damage 2: Side panel - rear left side: Side panel - dent(s) - Smooth repair work



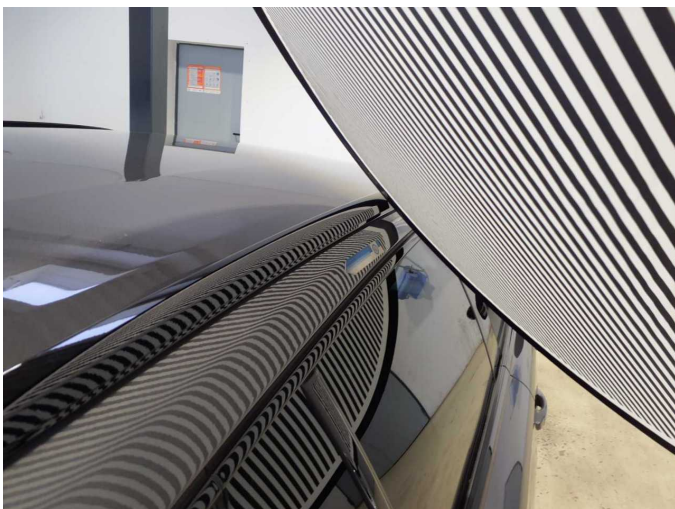
Damage 2: Side panel - rear left side: Side panel - dent(s) - Smooth repair work



Damage 2: Side panel - rear left side: Side panel - dent(s) - Smooth repair work



Damage 3: Roof: Roof rail - right side - dent(s) - Smooth repair work



Damage 3: Roof: Roof rail - right side - dent(s) - Smooth repair work



Damage 4: Trim / covers: Door trim - rear left side - Scratch(es) - Smart repair



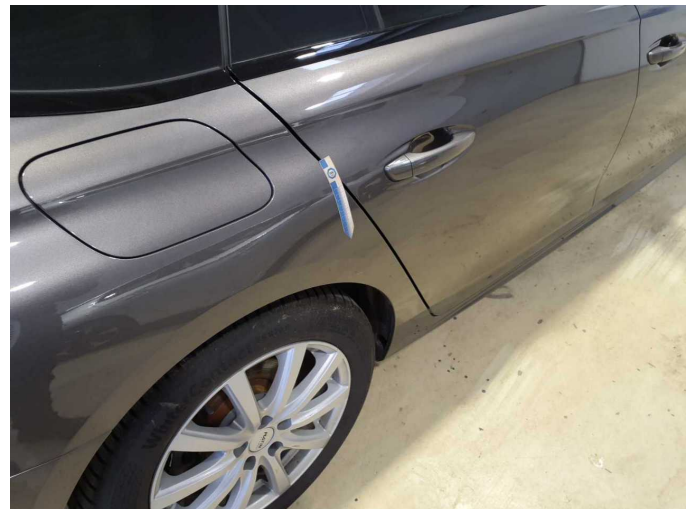
Damage 4: Trim / covers: Door trim - rear left side - Scratch(es) - Smart repair



Damage 5: Rear bumper: Rear bumper - Scratch(es) - Smart repair



Damage 5: Rear bumper: Rear bumper - Scratch(es) - Smart repair



Damage 6: Side panel - rear right side: Side panel - dent(s) - Smart repair



Damage 6: Side panel - rear right side: Side panel - dent(s) - Smart repair



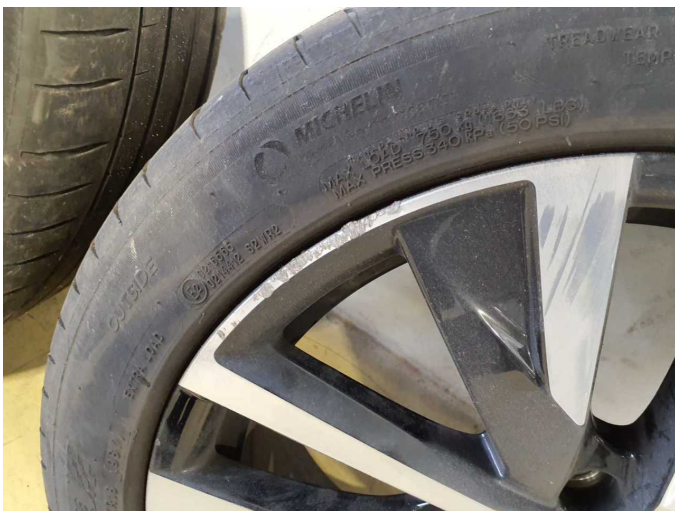
Damage 7: 2nd wheel set: 1 alloy rim - Scratch(es) - Loss in value



Damage 7: 2nd wheel set: 1 alloy rim - Scratch(es) - Loss in value



Damage 8: 2nd wheel set: 1 alloy rim - Scratch(es) - Replace



Damage 8: 2nd wheel set: 1 alloy rim - Scratch(es) - Replace



Damage 9: 2nd wheel set: Tyres - complete set - Worn - Replace



Damage 9: 2nd wheel set: Tyres - complete set - Worn - Replace



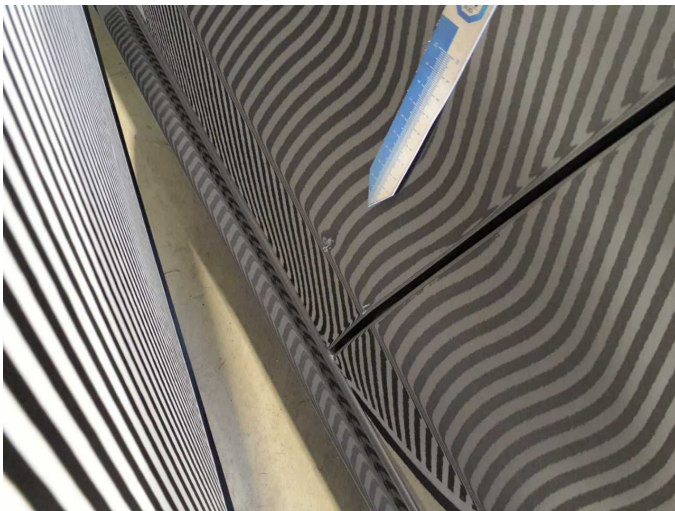
Damage 9: 2nd wheel set: Tyres - complete set - Worn - Replace



Damage 9: 2nd wheel set: Tyres - complete set - Worn - Replace



Damage 10: Door - front left side: Door - Dent / paintcoat damage - Repair and paint



Damage 10: Door - front left side: Door - Dent / paintcoat damage - Repair and paint



Damage 10: Door - front left side: Door - Dent / paintcoat damage - Repair and paint



Damage 11: Door - front right side: Door - Dent / paintcoat damage - Repair and paint



Damage 11: Door - front right side: Door - Dent / paintcoat damage - Repair and paint



Damage 11: Door - front right side: Door - Dent / paintcoat damage - Repair and paint



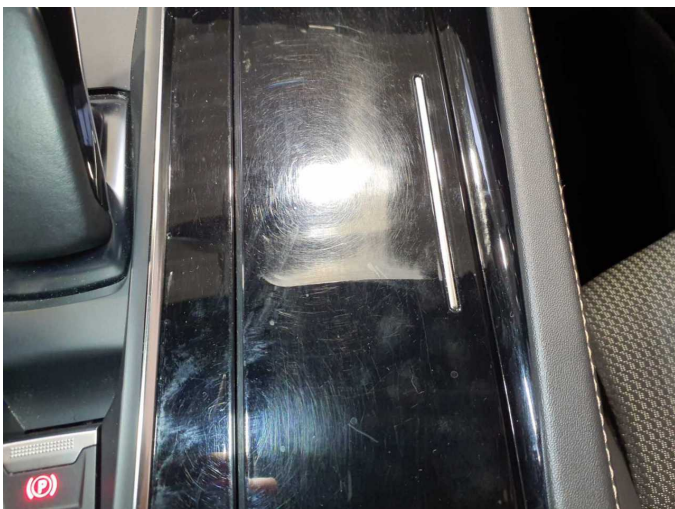
Damage 12: Front bumper: Front bumper - Scratch(es) - Paint



Damage 12: Front bumper: Front bumper - Scratch(es) - Paint



Wear and tear 5: Instrument panel: Centre console - front - Scratch(es) - No deduction



Wear and tear 5: Instrument panel: Centre console - front - Scratch(es) - No deduction