

## Expertise

Protocol number: 46290670  
Order No. / Reference: 26485204  
Inspection date: 29 Jun 2026

Manufacturer: Mercedes-Benz

Model: C 300 e T 9G-TRONIC Avantgarde

VIN: W1KAH5EB1PF100951



### Vehicle details

#### Manufacturer / Type / Model / Equipment

Mercedes-Benz C 300 e T 9G-TRONIC Avantgarde

**Vehicle Identification number** W1KAH5EB1PF100951

**Mileage (Read)** 91,012 km

**First registration** 3 Mar 2023

**Number of holders** 1

**Power / Engine displacement** 150 kw / 1,999 ccm

**Fuel type / Cylinder** Hybr.B/E ext.auf1 / 4

**Gearbox / Number of gears** Automatic / 9

**Type of drive** Rear drive

**Type of vehicle** Station wagon

**Colour / colour code** Schwarz

**Doors / Seats** 5 / 5

**Upholstery type** Cloth / leather combination

**Colour of upholstery** Black



## Vehicle details

<b>Maintenance booklet / proof</b>	digital proof / complete	<b>Next maintenance in</b>	241 Tag(e)
<b>Last service on / at</b>	01/2026 at 80,177 km		
<b>Key is / should be</b>	2 / 2	<b>FZG documents</b>	ZB#2 (B) was available (copy), ZB#1 (S) was not available.
		<b>Letter No.</b>	GS677219
<b>Previous damage / Accident</b>	Detectable	<b>Repainting</b>	None detectable
<b>Inspection conditions</b>	sufficient	<b>Lifting equipment / pit</b>	No
<b>Test drive</b>	Not performed	<b>Engine function test</b>	Performed
<b>Manufacturer key number/ type code number</b>	2222 / BEP 00065		
<b>Emission standard</b>	EURO6;WLTP;AP;PI/CI; M, N1 I	<b>fine dust sticker</b>	
<b>Permitted total weight</b>	2,655 kg	<b>Empty weight</b>	

## Tyres

### Mounted tyres

#	Tyre size	Type of tyre	Manufacturer	Tread depth
1)	225/50 R17 94Y	Summer tyres on Light alloy	Michelin	4mm / 4mm
2)	245/45 R17 98Y	Summer tyres on Light alloy	Michelin	6mm / 6mm

### Additional tyres

#	Tyre size	Type of tyre	Manufacturer	Tread depth
1)	225/50 R17 98H	Winter tyres on Light alloy	Michelin	5mm / 5mm
2)	245/45 R17 99H	Winter tyres on Light alloy	Michelin	4mm / 1mm

**Legend: Tread depth information for the left tire is listed first, for the right tire it is listed second on the axle in the direction of travel.**



## Equipment

### Standard equipment

- Airbag for driver and front passenger
  - Airbag: Center airbag
  - Airbag: Windowbag for driver and front passenger
  - Ambient lighting with 64 light colors
  - Basic services
  - Brake assist, active
  - Double cup holder at the front
  - EASY-PACK tailgate
  - Electronic Stability Program (ESP)
  - Velour floor mats
  - Transmission: 9-speed automatic, 9G-TRONIC
  - Rear bumper in body color
  - Interior headliner fabric crystal grey
  - KEYLESS-GO start function
  - THERMATIC automatic climate control with 2 climate zones
  - Front headrests
  - Charging cable for household socket, 5m, smooth (This charging cable, also called Mode 2 cable, allows you to charge the vehicle battery at the household socket with up to 1.8 kW (230 V, 1-phase, 8A) and fits sockets of type E/F CEE 7/7)
  - Mercedes-Benz emergency call system
  - Otto particulate filter
  - Package: AVANTGARDE Exterior (300e)
  - Package: Park
  - Radio: Extended MBUX functions
  - Radio accessories: Digital radio (DAB)
  - Radio accessories: Central display
  - Tire pressure monitoring system (TPMS)
  - Windscreen wipers with rain sensor
  - Seats: Rear seat backrests foldable
  - Cruise control
  - Electronic immobilizer
  - Decorative elements in diamond pattern, silver-grey
- Airbag: Automatic passenger airbag deactivation
  - Airbag: Side airbag for driver and front passenger
  - Acoustic environmental protection
  - Left and right exterior mirrors are heated and electrically adjustable
  - Roof rails in polished aluminum
  - DYNAMIC SELECT
  - ECO start/stop function
  - Electric windows (4-way)
  - Speed Limit Assistant
  - rear window wiper
  - Heated rear window
  - ISOFIX child seat attachment with top tether in the rear
  - Mechanical child safety lock for the rear doors
  - Rear headrests (3)
  - Paint finish: Solid
  - Cargo area cover including EASY-PACK safety net
  - Charging system: AC charging system 11kW
  - LED High Performance Headlights
  - Steering wheel: Multifunction sports steering wheel in leather
  - Center console in high-gloss black
  - Package: Storage
  - Package: Interior lighting package
  - Upholstery: ARTICO leatherette/fabric
  - Radio: MBUX
  - Radio accessories: Communication module (LTE) for using Mercedes me connect services
  - Remote Services Plus
  - Power steering
  - Lane Keeping Assist, active
  - High-visibility vest for drivers
  - Central locking with remote control



### Extra equipment

- Active Distance Assist DISTRONIC (Automatically regulates the distance to the vehicle in front.)
- Package: Advanced Comfort Package (Heated seats for driver and front passenger - Seat Comfort Package: - Numerous electric and manual adjustment options for the front seats to adapt to the specific body and comfort requirements of the driver and front passenger - Electro-pneumatic 4-way lumbar support and lateral support adjustment with control element on the seat - Electric seat cushion tilt adjustment - Electric height adjustment - Electric backrest adjustment - Electric seat cushion depth adjustment - Mechanical longitudinal adjustment - Mechanical headrest adjustment)
- Package: Infotainment package (MBUX Navigation Premium (hard drive navigation, pre-installation for Live Traffic Information), traffic sign assistant, smartphone integration (connects the mobile phone wirelessly to the multimedia system via Apple CarPlay and Android Auto))
- Package: Night (300e Estate with Avantgarde exterior) (Radiator grille: louvers in high-gloss black and trim in high-gloss chrome (17") Light-alloy wheels in 5-spoke design, polished, front axle 225/50R17 on 7Jx17 ET44.5, rear axle 245/45R17 on 8Jx17 ET49.5 Front apron with trim (wing) in high-gloss black. Rear bumper with trim (wing) in high-gloss black. Belt trim strip and window surrounds in high-gloss black. Exterior mirror housings painted in high-gloss black. Heat-insulating dark-tinted glass at the rear (from the B-pillar). Roof rails in black.)
- Heat-insulating dark tinted glass
- Charging cable for wallbox and public charging station, 5m, smooth 11kW (This charging cable, also called Mode 3 cable, allows you to charge the vehicle battery at the wallbox or at public charging stations with up to 11 kW (Type 2, 3-phase, 16 A).)
- Package: Assistance (Blind Spot Assist: The system can warn you of side collisions with other road users in your blind spot, especially as soon as you activate the turn signal. Even after driving, the system remains vigilant and warns you if you open the door at the wrong moment. An important safety feature – especially for cyclists.)
- Package: Business (300e) (Mirror Package: Electrically folding exterior mirrors with automatic dimming function, ambient lighting with Mercedes-Benz logo projection - Advanced Comfort Package: Heated seats for driver and front passenger, 4-way lumbar support, seat comfort package - Infotainment Package: MBUX Navigation Premium, traffic sign assist, smartphone integration - Public Charging Package)
- Wheels: 43.2 cm (17") light alloy wheels in 5-spoke design (gloss-turned with front axle 225/50 R 17 on 7 J x 17 ET 44.5, rear axle 245/45 R 17 on 8 J x 17 ET 49.5)
- Wheels: Winter complete set of M+S wheels, 4-piece set, 43.2 cm (17") alloy wheels, 5-spoke design (gloss-turned front axle 225/50 R17 on 7 J x 17 ET44.5, rear axle 245/45 R17 on 8 J x 17 ET49.5)
- Wheels: Complete winter wheel sets fitted at the factory
- Seats: Comfort seats

### Brief expert findings

Documents submitted	At the time of the inspection, the vehicle registration certificate Part 2 (title) was available, but the vehicle registration certificate Part 1 (document) was not. (Copy)
VIN comparison	The vehicle identification number (VIN) was read from the vehicle and its conformity with the submitted documents was confirmed by the undersigned during the inspection.
Inspection	The inspection conditions were sufficient for the assessment of the vehicle. No lifting equipment or pit was available for inspecting the vehicle. Therefore, inspection of the vehicle's underside was only possible to a limited extent.
Test drive	No test drive/shunting maneuver was carried out during the inspection of the vehicle.
Engine function test	An engine test run was performed.

### Value reducing factors

No.	Component group	Description
1	Instrument panel	Indicator light (Reifendruck Kontrollleuchte) - on - Perform diagnosis
2	Door - front left side	Door edge - Scratch(es) - Smart repair
3	2nd wheel set	1 tyre - Worn - Replace
4	2nd wheel set	1 tyre (Kante abgefahren) - Worn - Replace
5	Boot lid / rear door	Rear spoiler - Scratch(es) - Paint



## Wear and tear

No.	Component group	Description
1	Front bumper	Front bumper - Stone chips - No deduction
2	Bonnet	Bonnet - Stone chips - No deduction
3	Vehicle glazing	Windscreen - Stone chips - No deduction
4	Interior	Interior - Scratch(es) - No deduction
5	Rear bumper	Rear bumper - Scratch(es) - No deduction

The vehicle shows signs of wear and tear commensurate with its age and use.

## Previous damages

No.	Previous damage	Extent of damage (Net)
1	Side right, Provided by user / customer, from 4 Aug 2025	10.333,47 €

## Accident damages

No.	Accident
1	Side - left

## Order/Scope of Order

An order was placed to prepare a sales report for the described vehicle. This report includes the following:

- Description of key vehicle information
- Documentation of equipment features  
(*Delivery by third-party service providers*)
- Documentation of damage, defects, missing parts
- Documentation of prior damage, unrepaired prior damage, repainting
- A brief visual or functional inspection of the equipment details, if possible.  
(*Functional testing of driver assistance systems is not included in the scope of services!*)
- a photographic documentation of the vehicle

## Basis for the order

This product is based on the guidelines for vehicle returns and valuations published by Alphabet Fleet GmbH. The expert makes the specific findings in each individual case objectively, within the framework of the prescribed standards, based on their own expertise.

The vehicle inspection takes place in a fully assembled, unassembled state.

Damage or defects that can only be detected during disassembly/diagnostic work or through further investigation remain within the realm of prognostic risk. An increased risk exists due to concealed defects caused by fraudulent misrepresentation and which were not identifiable by the expert.

Damage or defects resulting from normal use or wear and tear of the vehicle will be accepted in accordance with the applicable standard.

There was no explicit identification or monetary consideration of the expected features within the product.

Features which, in their nature and extent, slightly exceed normal use but do not constitute unacceptable damage, will be documented and indicated as signs of wear, if applicable.

Damage or defects that, according to the applicable standard, can no longer be attributed to normal use or wear and tear are listed under "Value Reducing Factors" in the product description.

Depending on the product specification, a monetary ID can be provided. If this takes place, the costs can be 100% or pro rata depending on the vehicle's age and mileage.



## Previous damages

Non-repaired previous damages were found at the vehicle. The necessary repair costs are listed in the expert report or if necessary, are listed in detail in a separately enclosed repair cost calculation.

## Comments

- Die Unterbodenbesichtigung war nur ebenerdig & eingeschränkt möglich. Mehrkosten möglich.



Figure 1: Diagonal front (left)



Figure 2: Diagonal front (right)



Figure 3: Diagonal rear (left)



Figure 4: Diagonal rear (right)

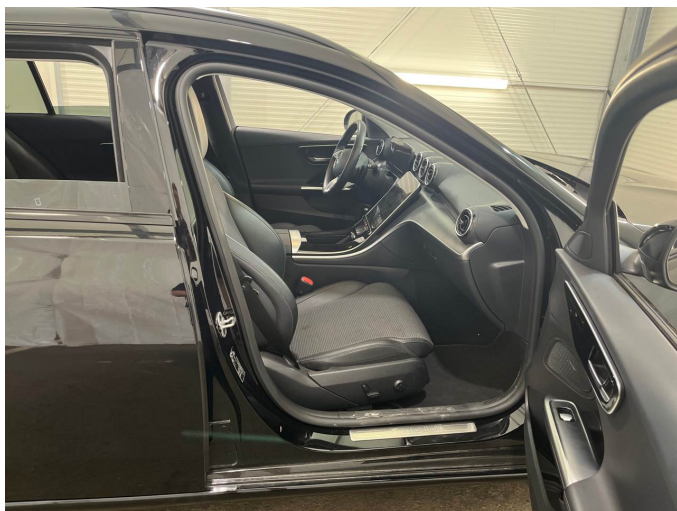


Figure 5: Interior - front



Figure 6: Interior - rear



Figure 7: Instrument cluster



Figure 8: Instrument panel



Figure 9: Interior 360° view



Figure 10: Cargo area



Figure 11: VIN



Figure 12: Mounted tyres



Figure 13: Documents



Figure 14: Documents



Figure 15: Documents



Figure 16: Additional tyres

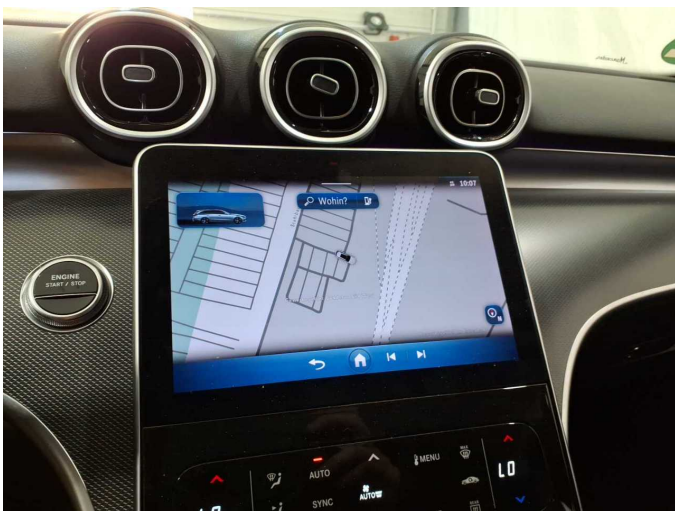


Figure 17: Navigation



Figure 18: Misc.



Figure 19: Misc.



Figure 20: Misc.



Figure 21: Misc.

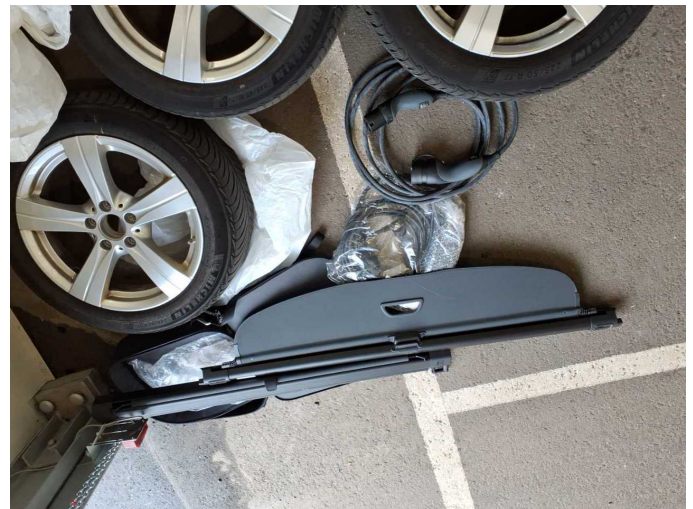


Figure 22: Misc.



Figure 23: Misc.



Figure 24: Misc.



Figure 25: Misc.



Figure 26: Misc.



Figure 27: Misc.



Figure 28: Misc.



Figure 29: Misc.



Figure 30: Misc.



Figure 31: Misc.



Figure 32: Misc.



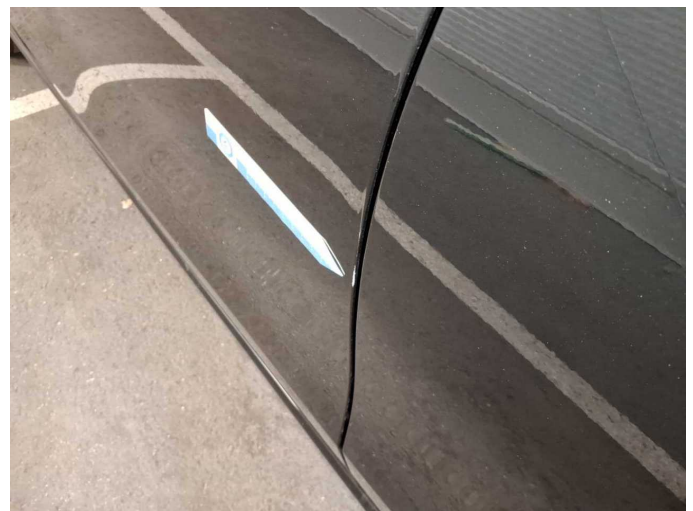
Figure 33: Misc.



Figure 34: Misc.



**Damage 1:** Instrument panel: Indicator light (Reifendruck Kontrollleuchte) - on - Perform diagnosis



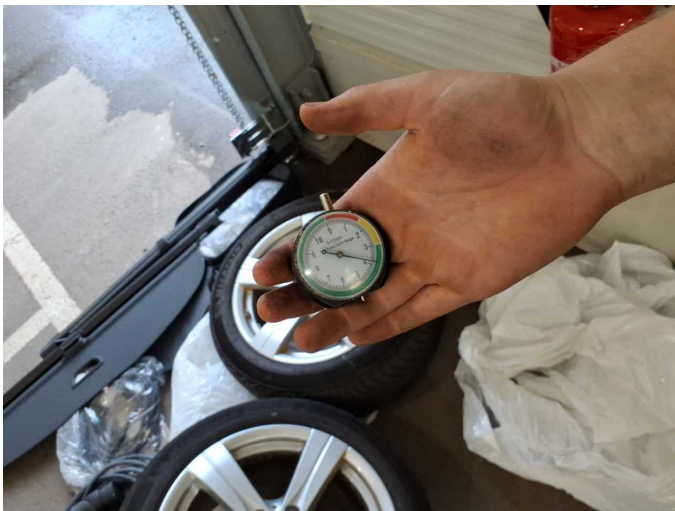
**Damage 2:** Door - front left side: Door edge - Scratch(es) - Smart repair



**Damage 2:** Door - front left side: Door edge - Scratch(es) - Smart repair



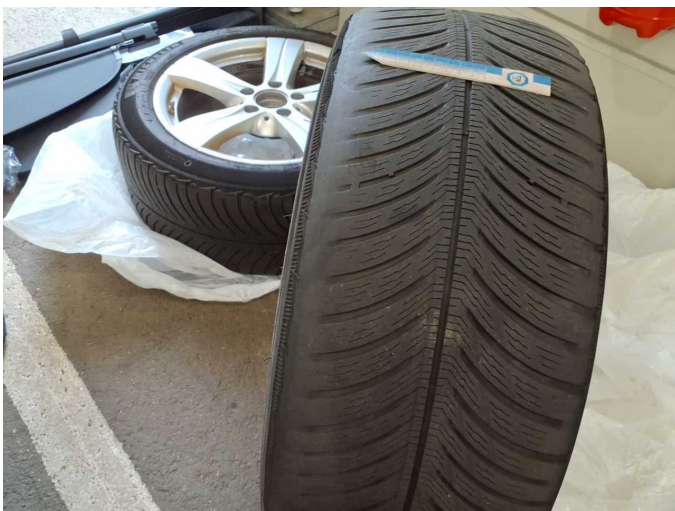
**Damage 3:** 2nd wheel set: 1 tyre - Worn - Replace



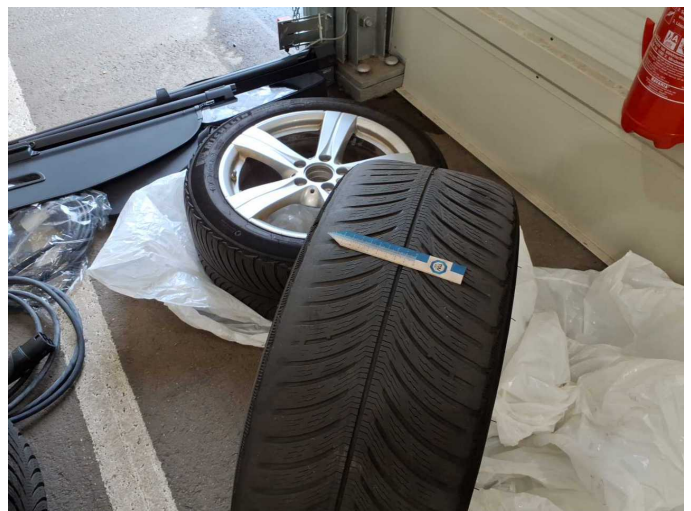
**Damage 3:** 2nd wheel set: 1 tyre - Worn - Replace



**Damage 4:** 2nd wheel set: 1 tyre (Kante abgefahren) - Worn - Replace



**Damage 4:** 2nd wheel set: 1 tyre (Kante abgefahren) - Worn - Replace



**Damage 4:** 2nd wheel set: 1 tyre (Kante abgefahren) - Worn - Replace



**Damage 5:** Boot lid / rear door: Rear spoiler - Scratch(es) - Paint



**Damage 5:** Boot lid / rear door: Rear spoiler - Scratch(es) - Paint



**Wear and tear 1:** Front bumper: Front bumper - Stone chips - No deduction



**Wear and tear 1:** Front bumper: Front bumper - Stone chips - No deduction



**Wear and tear 2:** Bonnet: Bonnet - Stone chips - No deduction



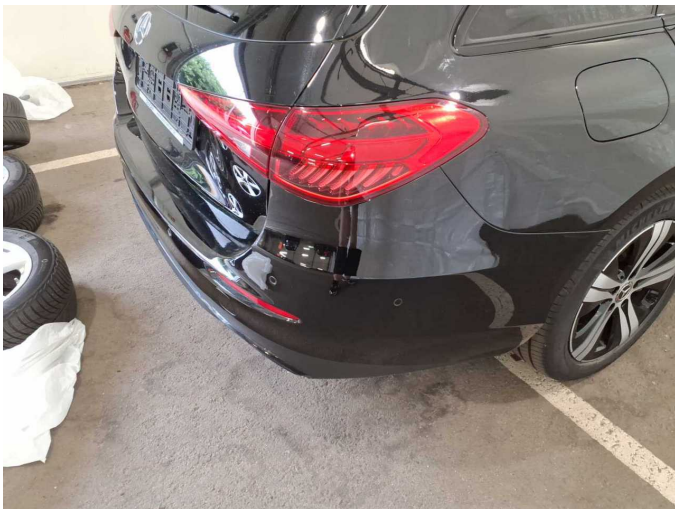
**Wear and tear 3:** Vehicle glazing: Windscreen - Stone chips - No deduction



**Wear and tear 5:** Rear bumper: Rear bumper - Scratch(es) - No deduction



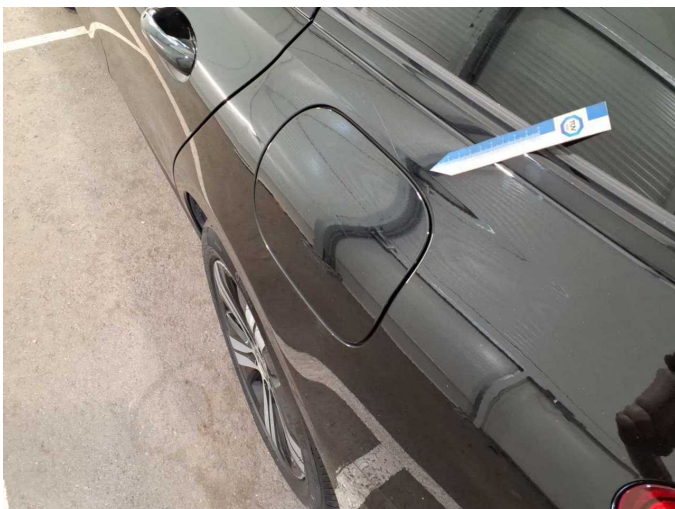
**Wear and tear 5:** Rear bumper: Rear bumper - Scratch(es) - No deduction



**Wear and tear 5:** Rear bumper: Rear bumper - Scratch(es) - No deduction



**Accident 1:** Side - left



**Accident 1:** Side - left



**Accident 1:** Side - left



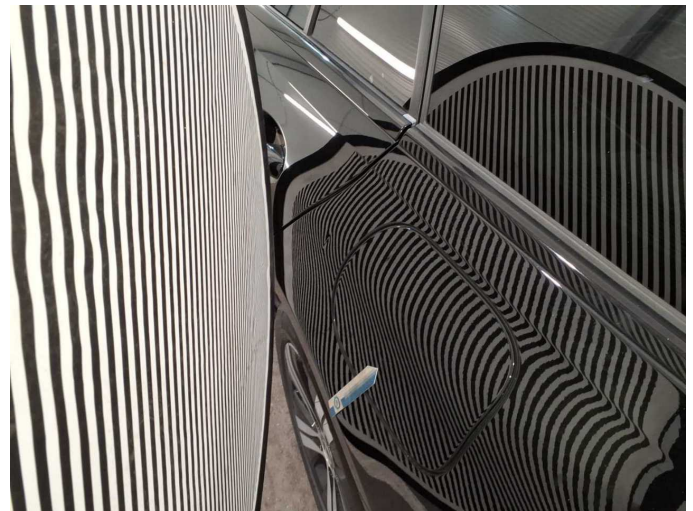
Accident 1: Side - left



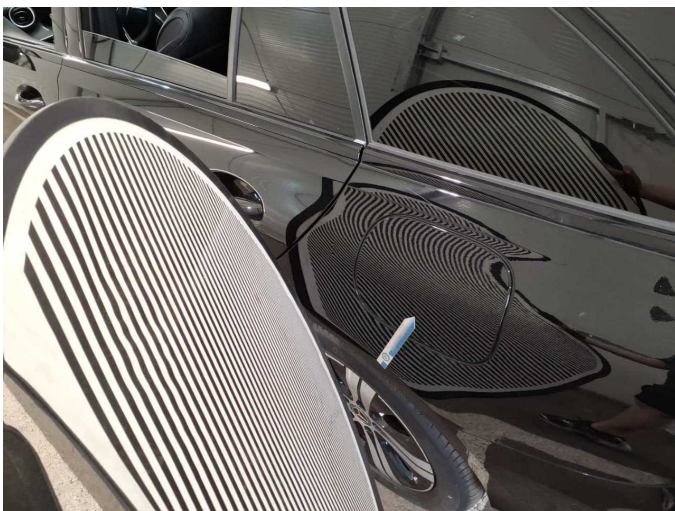
Accident 1: Side - left



Accident 1: Side - left



Accident 1: Side - left



Accident 1: Side - left



# Wartungshistorie

(gemäß Auftraggeber Informationen)

Fahrgestellnummer: W1KAH5EB1PF100951

Hersteller / Modell: MERCEDES-BENZ MB C 300 e T 9G-TRONIC Avantgarde

Datum	KM-Stand	Beschreibung
21.01.2026	80.177	Regelwartungsdienst
18.03.2025	54.471	Regelwartungsdienst; Systemtest/Eigendiagnose
09.04.2024	26.859	Regelwartungsdienst