

Expertise

Protocol number: 45968209
Order No. / Reference: 26390300
Inspection date: 16 Jun 2026

Manufacturer: Mercedes-Benz

Model: C 300 e T 9G-TRONIC AMG Line

VIN: W1KAH5EB7PF120492



Vehicle details

Manufacturer / Type / Model / Equipment

Mercedes-Benz C 300 e T 9G-TRONIC AMG Line

Vehicle Identification number W1KAH5EB7PF120492

Mileage (Read) 115,236 km

First registration 26 Jun 2023

Number of holders 1

Power / Engine displacement 150 kw / 1,999 ccm

Fuel type / Cylinder Hybr.B/E ext.auf1 / 4

Gearbox / Number of gears Automatic / 9

Type of drive Rear drive

Type of vehicle Station wagon

Colour / colour code Graphitgrau Metallic

Doors / Seats 5 / 5

Upholstery type Cloth / leather combination

Colour of upholstery Black-Anthracite



Vehicle details

| | | | |
|--|------------------------------|--------------------------------|--|
| Maintenance booklet / proof | digital proof / complete | Next maintenance in | 239 Tag(e) |
| Last service on / at | 04/2025 at 79,274 km | | |
| Key is / should be | 2 / 2 | FZG documents | ZB#2 (B) was available (copy), ZB#1 (S) was not available. |
| | | Letter No. | GV697862 |
| Previous damage / Accident | Detectable | Repainting | Detectable |
| Inspection conditions | sufficient | Lifting equipment / pit | yes |
| Test drive | Not performed | Engine function test | Performed |
| Manufacturer key number/ type code number | 2222 / BEP 00067 | | |
| Emission standard | EURO6;WLTP;AP;PI/CI; M, N1 I | fine dust sticker | |
| Permitted total weight | 2,655 kg | Empty weight | |

Tyres

Mounted tyres

| # | Tyre size | Type of tyre | Manufacturer | Tread depth |
|----|----------------|-----------------------------|--------------|-------------|
| 1) | 225/50 R17 94H | Winter tyres on Light alloy | Bridgestone | 5mm / 5mm |
| 2) | 245/45 R17 99H | Winter tyres on Light alloy | Michelin | 5mm / 5mm |

Additional tyres

| # | Tyre size | Type of tyre | Manufacturer | Tread depth |
|----|----------------|-----------------------------|--------------|-------------|
| 1) | 225/45 R18 95Y | Summer tyres on Light alloy | Pirelli | 5mm / 5mm |
| 2) | 255/40 R18 99Y | Summer tyres on Light alloy | Pirelli | 5mm / 5mm |

Legend: Tread depth information for the left tire is listed first, for the right tire it is listed second on the axle in the direction of travel.



Equipment

Standard equipment

- Airbag for driver and front passenger
- Airbag: Center airbag
- Airbag: Windowbag for driver and front passenger
- Ambient lighting with 64 light colors
- AMG sports pedal assembly made of brushed stainless steel with rubber studs
- Basic services
- black roof rails
- DYNAMIC SELECT
- ECO start/stop function
- Electric windows (4-way)
- Transmission: 9-speed automatic, 9G-TRONIC
- Heated rear window
- ISOFIX child seat attachment with top tether in the rear
- KEYLESS-GO start function
- THERMATIC automatic climate control with 2 climate zones
- Front headrests
- Cargo area cover including EASY-PACK safety net
- LED High Performance Headlights
- Mercedes-Benz emergency call system
- Center console in high-gloss black
- Package: Storage
- Package: Park
- Radio: Extended MBUX functions
- Radio accessories: Digital radio (DAB)
- Radio accessories: Central display
- Tire pressure monitoring system (TPMS)
- Wheels: 45.7 cm (18") AMG light-alloy wheels in a 5-spoke design
- Lane Keeping Assist, active
- High-visibility vest for drivers
- Central locking with remote control
- Airbag: Automatic passenger airbag deactivation
- Airbag: Side airbag for driver and front passenger
- Acoustic environmental protection
- AMG floor mats
- Left and right exterior mirrors are heated and electrically adjustable
- Brake assist, active
- Double cup holder at the front
- EASY-PACK tailgate
- Electronic Stability Program (ESP)
- Speed Limit Assistant
- rear window wiper
- Instrument panel and door sills in ARTICO man-made leather in black nappa look
- Mechanical child safety lock for the rear doors
- Rear headrests (3)
- Charging cable for household socket, 5m, smooth
- Charging system: AC charging system 11kW
- Steering wheel: Multifunction sports steering wheel in Nappa leather
- Otto particulate filter
- Package: Interior lighting package
- Upholstery: ARTICO leatherette/MICROCUT microfiber
- Radio: MBUX
- Radio accessories: Communication module (LTE) for using Mercedes me connect services
- Remote Services Plus
- Windscreen wipers with rain sensor
- Seats: Rear seat backrests foldable
- Cruise control
- Electronic immobilizer
- Decorative elements, metal structure



Extra equipment

- Towbar with ESP trailer stabilization
- Black fabric headliner
- Paint finish: Metallic
- Package: Advanced Infotainment Package (MBUX Navigation Premium (hard drive navigation, pre-installation for Live Traffic Information), Traffic Sign Assist, Smartphone Integration (connects the mobile phone wirelessly to the multimedia system via Apple CarPlay and Android Auto), Wireless charging system for mobile devices in the front, Driver display - 31.2 cm (12.3") color LCD display, Central display - 30.2 cm (11.9") touch display with LCD technology)
- Package: High-End Comfort Package (Seat heating for driver and front passenger - Memory Package: Driver and front passenger seats, steering column and exterior mirrors electrically adjustable and storable; Seat longitudinal position and headrest height additionally electrically adjustable; 3 memory settings each for driver and front passenger; 4-way lumbar support for driver and front passenger; Seat cushion depth adjustment with gapless cushion; PRE-SAFE positioning function for the front passenger seat)
- Package: Mirror package (both exterior mirrors electrically folding (button in the driver's door control panel) - interior mirror and exterior mirror on the driver's side automatically dimming continuously - ambient lighting of the exterior mirror to illuminate the entry area with projection of the Mercedes-Benz logo)
- Sunroof: Electric panoramic sunroof
- Seats: Sports seats
- Head-up display
- KEYLESS-GO (access and driving authorization system)
- Charging cable for wallbox and public charging station, 5m, smooth 11kW (This charging cable, also called Mode 3 cable, allows you to charge the vehicle battery at the wallbox or at public charging stations with up to 11 kW (Type 2, 3-phase, 16 A).)
- Package: Business (300e)
- Package: Driving Assistance (Active Distance Assist DISTRONIC, Active Speed Limit Assist, Extended Automatic Restart on Highways, Route-Based Speed Adaptation with Traffic Jam End Function, Active Traffic Jam Assist, Active Steering Assist, Active Lane Change Assist, Active Emergency Stop Assist, Emergency Lane Function, Active Brake Assist with Vehicle, Bicycle and Pedestrian Detection; Intersection Function, Turn Function, Traffic Jam End Emergency Braking Function, Evasive Steering Assist, Active Lane Keeping Assist, Active Blind Spot Assist, Exit Warning Function)
- Package: Public Charging (charging cable for wallbox and public charging stations, 5m, smooth (charging the vehicle battery at the wallbox or at public charging stations with up to 11 kW (Type 2, 3-phase, 20 A)) - Remote and Charging Services Plus)
- Wheels: Complete summer wheel sets fitted at the factory
- Wheels: Winter complete set of M+S wheels, 4-piece set, 43.2 cm (17") alloy wheels, 5-spoke design (gloss-turned front axle 225/50 R17 on 7 J x 17 ET44.5, rear axle 245/45 R17 on 8 J x 17 ET49.5)

Brief expert findings

| | |
|----------------------|--|
| Documents submitted | At the time of the inspection, the vehicle registration certificate Part 2 (title) was available, but the vehicle registration certificate Part 1 (document) was not. (Copy) |
| VIN comparison | The vehicle identification number (VIN) was read from the vehicle and its conformity with the submitted documents was confirmed by the undersigned during the inspection. |
| Inspection | The inspection conditions were sufficient for the assessment of the vehicle. Lifting equipment and/or a pit were available for examining the vehicle. |
| Test drive | No test drive/shunting maneuver was carried out during the inspection of the vehicle. |
| Engine function test | An engine test run was performed. |

Value reducing factors

| No. | Component group | Description |
|-----|-----------------|---|
| 1 | Rear bumper | Rear bumper - Scratch(es) - Smart repair |
| 2 | Wheel / tyres | Alloy rim - front left side - Scratch(es) - Loss in value |
| 3 | Bonnet | Bonnet - Dent / paintcoat damage - Repair and paint |

Wear and tear

| No. | Component group | Description |
|-----|-----------------------------|---------------------------------------|
| 1 | Side panel - rear left side | Side panel - Corrosion - No deduction |

The vehicle shows signs of wear and tear commensurate with its age and use.



Missing parts

Description

Documents - Service book (Digitaler Ausdruck)

Previous damages

| No. | Previous damage | Extent of damage (Net) |
|-----|--|------------------------|
| 1 | Side - left, Provided by user / customer, from 2 Sept 2025 | 3.180,08 € |
| 2 | Front, Provided by user / customer, from 10 Nov 2024 | 3.651,63 € |
| 3 | Front, Provided by user / customer, from 29 Mar 2025 | 4.417,15 € |

Repainting

No. Repainting

1 Mudguard - left side, Door - front left side, Professionally carried out, Invoice of repair done Non-existent

Paint coat thickness measurement

Mudguard - left side 155 µm | Door - front left side 177 µm

Order/Scope of Order

An order was placed to prepare a sales report for the described vehicle. This report includes the following:

- Description of key vehicle information
- Documentation of equipment features
(*Delivery by third-party service providers*)
- Documentation of damage, defects, missing parts
- Documentation of prior damage, unrepaired prior damage, repainting
- A brief visual or functional inspection of the equipment details, if possible.
(*Functional testing of driver assistance systems is not included in the scope of services!*)
- a photographic documentation of the vehicle

Basis for the order

This product is based on the guidelines for vehicle returns and valuations published by Alphabet Fleet GmbH. The expert makes the specific findings in each individual case objectively, within the framework of the prescribed standards, based on their own expertise.

The vehicle inspection takes place in a fully assembled, unassembled state.

Damage or defects that can only be detected during disassembly/diagnostic work or through further investigation remain within the realm of prognostic risk. An increased risk exists due to concealed defects caused by fraudulent misrepresentation and which were not identifiable by the expert.

Damage or defects resulting from normal use or wear and tear of the vehicle will be accepted in accordance with the applicable standard.

There was no explicit identification or monetary consideration of the expected features within the product.

Features which, in their nature and extent, slightly exceed normal use but do not constitute unacceptable damage, will be documented and indicated as signs of wear, if applicable.

Damage or defects that, according to the applicable standard, can no longer be attributed to normal use or wear and tear are listed under "Value Reducing Factors" in the product description.

Depending on the product specification, a monetary ID can be provided. If this takes place, the costs can be 100% d or pro rata depending on the vehicle's age and mileage.



Previous damages

According to available information previous damages were repaired at the vehicle. Traces of repairs, which allow conclusions about the area of repair, were not recognizable during the inspection.

Comments

Wartungshistorie gemäß Auftraggeber Informationen.



Figure 1: Diagonal front (left)



Figure 2: Diagonal front (right)



Figure 3: Diagonal rear (left)



Figure 4: Diagonal rear (right)



Figure 5: Interior - front



Figure 6: Interior - rear



Figure 7: Instrument cluster



Figure 8: Instrument panel



Figure 9: Interior 360° view



Figure 10: Cargo area



Figure 11: VIN



Figure 12: Mounted tyres



Figure 13: Documents



Figure 14: Additional tyres



Figure 15: Navigation



Figure 16: Misc.



Figure 17: Misc.

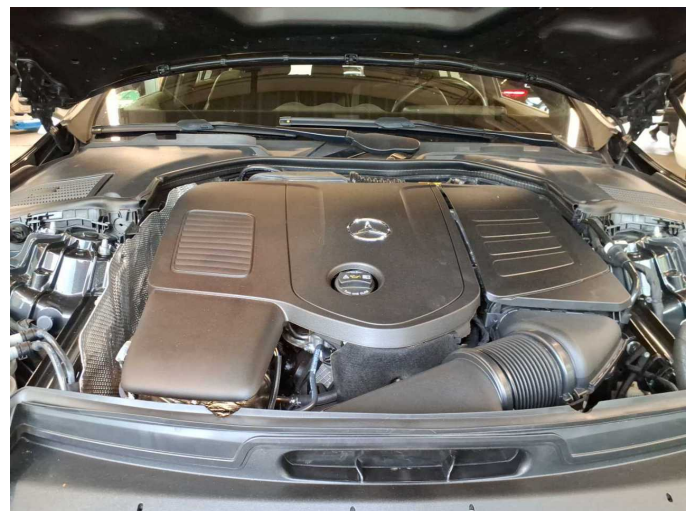


Figure 18: Misc.



Figure 19: Misc.



Figure 20: Misc.



Figure 21: Misc.



Figure 22: Misc.



Figure 23: Misc.



Figure 24: Misc.

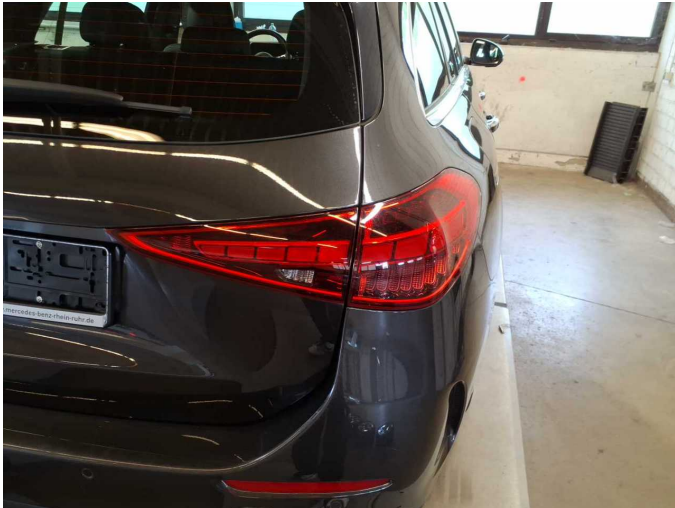


Figure 25: Misc.



Figure 26: Misc.



Figure 27: Misc.

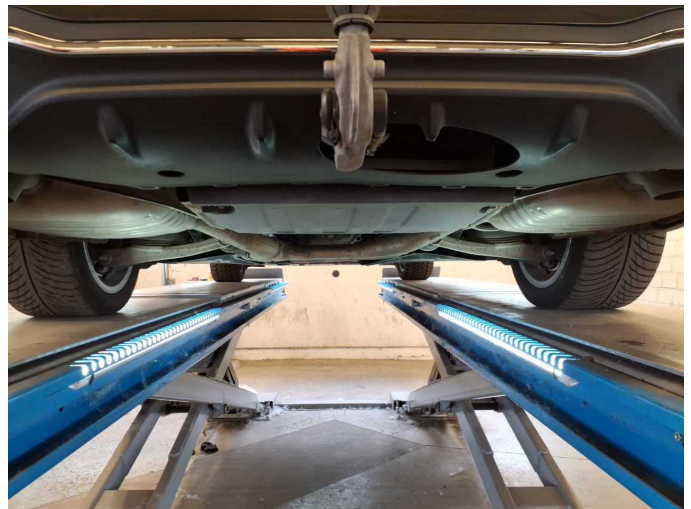


Figure 28: Misc.



Figure 29: Misc.



Figure 30: Misc.

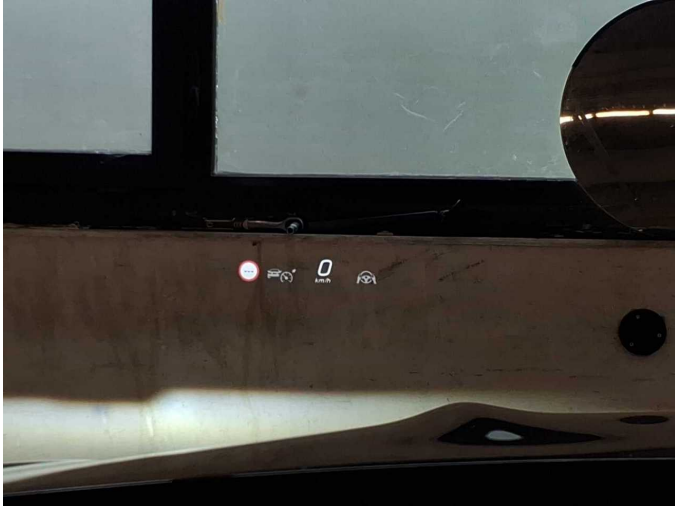


Figure 31: Misc.



Figure 32: Misc.



Figure 33: Misc.



Damage 1: Rear bumper: Rear bumper - Scratch(es) - Smart repair



Damage 1: Rear bumper: Rear bumper - Scratch(es) - Smart repair



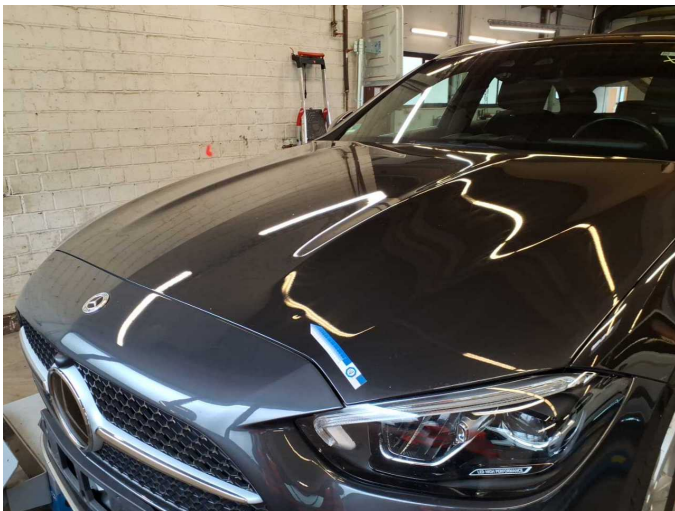
Damage 1: Rear bumper: Rear bumper - Scratch(es) - Smart repair



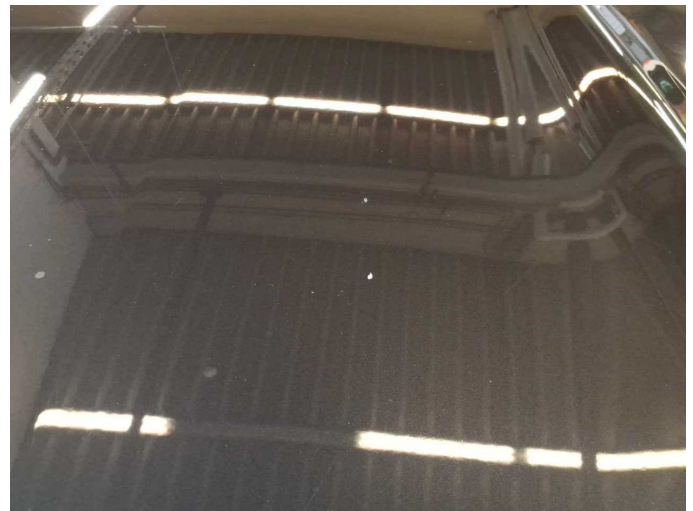
Damage 2: Wheel / tyres: Alloy rim - front left side - Scratch(es) - Loss in value



Damage 2: Wheel / tyres: Alloy rim - front left side - Scratch(es) - Loss in value



Damage 3: Bonnet: Bonnet - Dent / paintcoat damage - Repair and paint



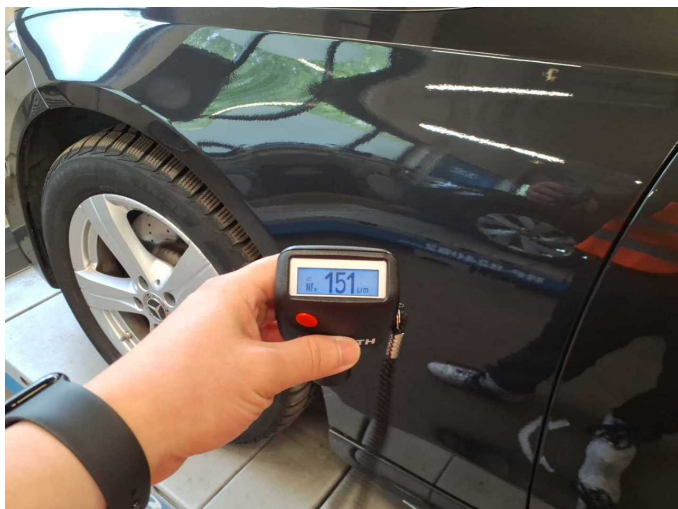
Damage 3: Bonnet: Bonnet - Dent / paintcoat damage - Repair and paint



Damage 3: Bonnet: Bonnet - Dent / paintcoat damage - Repair and paint



Repainting 1: Mudguard - left side, Door - front left side



Repainting 1: Mudguard - left side, Door - front left side



Wartungshistorie

(gemäß Auftraggeber Informationen)

Fahrgestellnummer: W1KAH5EB7PF120492

Hersteller / Modell: MERCEDES-BENZ MERCEDES-BENZ C 300 e T 9G-TRONIC
AMG Line

| Datum | KM-Stand | Beschreibung |
|------------|----------|---------------------|
| 15.01.2026 | 104.413 | Bremsscheiben vorne |
| 04.04.2025 | 79.274 | Regelwartungsdienst |
| 24.07.2024 | 52.841 | Regelwartungsdienst |
| 05.01.2024 | 27.572 | Regelwartungsdienst |