

Expertise

Protocol number: 45506394
Order No. / Reference: 26114770
Inspection date: 18 May 2026

Manufacturer: Volvo

Model: XC60 B4 D AWD Plus Dark

VIN: YV1UZZK5V2R1729691



Vehicle details

Manufacturer / Type / Model / Equipment

Volvo XC60 B4 D AWD Plus Dark

Vehicle Identification number YV1UZZK5V2R1729691

Mileage (Read) 144,629 km

First registration 14 Jul 2023

Number of holders 1

Next periodical technical inspection 07/2026
(Report not on hand)

Power / Engine displacement 145 kw / 1,969 ccm

Fuel type / Cylinder Hybrid Diesel / E / 4

Gearbox / Number of gears Automatic / 8

Type of drive All-wheel drive

Type of vehicle SUV

Colour / colour code BRIGHT DUSK Metallic

Doors / Seats 5 / 5

Upholstery type Leather

Colour of upholstery Anthracite-Black



Vehicle details

| | | | |
|--|------------------------------|--------------------------------|--|
| Maintenance booklet / proof | digital proof / complete | Next maintenance in | 125 Tag(e) |
| Last service on / at | 09/2025 at 119,602 km | | |
| Key is / should be | 2 / 2 | FZG documents | ZB#2 (B) was available (copy), ZB#1 (S) was not available. |
| | | Letter No. | GV797105 |
| Previous damage / Accident | None detectable | Repainting | None detectable |
| Inspection conditions | sufficient | Lifting equipment / pit | yes |
| Test drive | Not performed | Engine function test | Performed |
| Manufacturer key number/ type code number | 9101 / BPQ 00035 | | |
| Emission standard | EURO6;WLTP;AP;PI/CI; M, N1 I | fine dust sticker | |
| Permitted total weight | 2,540 kg | Empty weight | |

Tyres

Mounted tyres

| # | Tyre size | Type of tyre | Manufacturer | Tread depth |
|----|-----------------|-----------------------------|--------------|-------------|
| 1) | 235/55 R19 105H | Winter tyres on Light alloy | Continental | 4mm / 4mm |
| 2) | 235/55 R19 105H | Winter tyres on Light alloy | Continental | 6mm / 6mm |

Additional tyres

| # | Tyre size | Type of tyre | Manufacturer | Tread depth |
|----|-----------------|---------------------------------|--------------|-------------|
| 1) | 235/55 R19 105H | All-season tyres on Light alloy | Michelin | 4mm / 4mm |
| 2) | 235/55 R19 105H | All-season tyres on Light alloy | Michelin | 5mm / 5mm |

Replacement

| Typ | Tyre size | Type of tyre | Manufacturer | Tread depth |
|-----|-----------------|-----------------------|--------------|-------------|
| N | 125/80 R18 100M | Summer tyres on Steel | Sonstige | 4 mm |

Legend: Tread depth information for the left tire is listed first, for the right tire it is listed second on the axle in the direction of travel.

TÜV SÜD Auto Partner GmbH
Wiesenring 2
04159 Leipzig

Inspection location
Hartmann Fleet Professionals GmbH
Industriestraße 11
36272 Niederaula



Equipment



Standard equipment

- ABS - Anti-lock Braking System
- Passenger side airbag can be deactivated
- Airbag, driver's knee airbag
- Active safety belts with belt tensioners
- All-wheel drive (AWD)
- Android infotainment system
- Electrically adjustable exterior mirrors
- Outdoor temperature display
- Hill Start Assist (HSA)
- LED turn signals integrated into the exterior mirrors
- third brake light
- Roof rails in high-gloss black (integrated)
- Digital services including Google Maps navigation system
- Aluminum door sill plates with Volvo lettering at the front
- Electronic differential lock
- Electric windows front and rear
- Window surround in high-gloss black
- Luggage compartment partition net
- Front seat belt height adjustment
- Heated rear window
- Interior and exterior mirrors automatically dimming
- Intelligent driver information system
- Keyless Drive (electronic access system)
- Child safety lock for the rear doors (electric)
- Headrests (5) front and rear
- Headrests of the 2nd row of seats can be folded down (electrically)
- Cargo area roller blind
- Steering wheel adjustable for height and reach
- Steering wheel: Multifunction buttons on the steering wheel
- Illuminated makeup mirror for driver and front passenger
- Emergency brake lights
- Package: Parking Assistance
- Package: Winter Package
- Parking ticket holder
- Radio: High Performance Sound audio system
- Radio accessories: Smartphone integration Apple CarPlay
- Rain sensor
- Tire pressure monitoring system
- Wheels: 19" alloy wheels, 5-V-spoke sport design, diamond cut/high-gloss black
- Rear seats in a 40/60 split or completely foldable with pass-through function
- Speed-sensitive power steering
- Seats: Driver and front passenger seats are height-adjustable (electrically)
- Sport front and rear apron
- Start/Stop technology
- Power socket
- First aid kit and warning triangle
- Lashing eyes in the luggage compartment (foldable)
- Driver and passenger side airbags with two-stage deployment system
- Airbag, side airbags for driver and front passenger and head/shoulder airbags for all occupants
- Ambient lighting
- Electrically folding exterior mirrors
- Heated exterior mirrors and rear window (automatic)
- Hill Descent Control (HDC)
- Fog sensor for automatic activation of the defroster function
- On-board computer
- Roof edge spoiler
- Diesel particulate filter
- Digital Instrumentation 2nd Gen.
- Electronic Stability Control (ESC)
- Enhanced air quality system with fine dust filtration according to air quality standard PM2.5
- Automatic emergency braking
- Transmission: 8-speed automatic transmission
- Automatic tailgate
- rear window wiper
- Interior lighting
- ISOFIX mounting for the outer rear seats
- Keyless Start
- Automatic climate control with separate temperature control for driver and front passenger
- Stainless steel loading sill protector in the luggage compartment
- LED headlights "Thor's Hammer"
- Steering wheel: Three-spoke steering wheel, leather-free
- Air quality system with activated carbon filter
- Front center armrest with integrated storage compartment and cup holders
- Package: Seat Comfort Package
- Electric parking brake
- Upholstery: Leather/leatherette comfort seats, anthracite
- Radio accessories: Digital radio reception (DAB+)
- Radio accessories: Two USB-C ports on the back of the center console
- Run-off Road Protection
- Wheels: Tire sealant
- Rear view camera
- Safety Assistance
- Whiplash protection system WHIPS
- Safety braking system with disc brakes all around (internally ventilated)
- Sport exterior mirrors in high-gloss black
- Sport front grille with horizontal struts and grille surround in high-gloss black
- Phone: Inductive smartphone charging system
- Glazing: Colored glazing
- Preparation for Trailer Stability Assist (TSA)



- Warning tone/indicator when seat belts are not fastened (for all seats)

- Immobiliser
- Central locking system with two remote controls and integrated emergency keys

Extra equipment

- Towbar (semi-electric)
- Paint finish: Metallic paint
- Parking camera with 360° surround view (including front, side and rear parking aid with automatic braking intervention (rear))
- Upholstery: Nappa leather/imitation leather comfort seats (perforated front seats) Anthracite (with active ventilation and electrically adjustable side bolsters for driver and front passenger seats - incl. rear center armrest - gearshift lever made of Swedish crystal glass by Orrefors - inlay: Linear Lime - headliner: Light Beige)
- Wheels: Spare wheel (steel rim) (incl. jack and tools)
- Windscreen, heater
- Package: Business Package (LED fog lights, headlight cleaning system, full LED headlights "Thor's Hammer", dynamic cornering lights, adaptive headlight range control, LED daytime running lights, Driver Assistance: adaptive cruise control, Emergency Stop Assist (automatic braking to a standstill and emergency call via Volvo On Call), Pilot Assist (lane keeping assist), tinted side and rear windows, premium audio system)
- Radio: Premium Sound audio system by Harman Kardon (600 watts of power - 14 speakers - Fresh Air - Subwoofer - Dirac Unison - Sound optimization)

Brief expert findings

| | |
|----------------------|--|
| Documents submitted | At the time of the inspection, the vehicle registration certificate Part 2 (title) was available, but the vehicle registration certificate Part 1 (document) was not. (Copy) |
| VIN comparison | The vehicle identification number (VIN) was read from the vehicle and its conformity with the submitted documents was confirmed by the undersigned during the inspection. |
| Inspection | The inspection conditions were sufficient for the assessment of the vehicle. Lifting equipment and/or a pit were available for examining the vehicle. |
| Test drive | No test drive/shunting maneuver was carried out during the inspection of the vehicle. |
| Engine function test | An engine test run was performed. |

Value reducing factors

| No. | Component group | Description |
|-----|------------------------|--|
| 1 | Engine | Engine - Functional / admissibility - Perform diagnosis |
| 2 | Door - rear right side | Door - dent(s) - Smooth repair work |
| 3 | Vehicle glazing | Windscreen - Stone chips - repair according to calculation |

Wear and tear

| No. | Component group | Description |
|-----|-----------------|--|
| 1 | Misc. | Main inspection - No evidence - No deduction |
| 2 | Front bumper | Front bumper - Stone chips - No deduction |

The vehicle shows signs of wear and tear commensurate with its age and use.

Order/Scope of Order

An order was placed to prepare a sales report for the described vehicle. This report includes the following:

- Description of key vehicle information
- Documentation of equipment features
(*Delivery by third-party service providers*)
- Documentation of damage, defects, missing parts
- Documentation of prior damage, unrepaired prior damage, repainting
- A brief visual or functional inspection of the equipment details, if possible.
(*Functional testing of driver assistance systems is not included in the scope of services!*)
- a photographic documentation of the vehicle



Basis for the order

This product is based on the guidelines for vehicle returns and valuations published by Alphabet Fleet GmbH. The expert makes the specific findings in each individual case objectively, within the framework of the prescribed standards, based on their own expertise.

The vehicle inspection takes place in a fully assembled, unassembled state.

Damage or defects that can only be detected during disassembly/diagnostic work or through further investigation remain within the realm of prognostic risk. An increased risk exists due to concealed defects caused by fraudulent misrepresentation and which were not identifiable by the expert.

Damage or defects resulting from normal use or wear and tear of the vehicle will be accepted in accordance with the applicable standard.

There was no explicit identification or monetary consideration of the expected features within the product.

Features which, in their nature and extent, slightly exceed normal use but do not constitute unacceptable damage, will be documented and indicated as signs of wear, if applicable.

Damage or defects that, according to the applicable standard, can no longer be attributed to normal use or wear and tear are listed under "Value Reducing Factors" in the product description.

Depending on the product specification, a monetary ID can be provided. If this takes place, the costs can be 100% d or pro rata depending on the vehicle's age and mileage.

Previous damages

No apparent prior damage that had been repaired could be found on the vehicle.



Figure 1: Diagonal front (left)



Figure 2: Diagonal front (right)



Figure 3: Diagonal rear (left)



Figure 4: Diagonal rear (right)



Figure 5: Interior - front



Figure 6: Interior - rear



Figure 7: Instrument cluster



Figure 8: Instrument panel



Figure 9: Interior 360° view



Figure 10: Cargo area



Figure 11: VIN



Figure 12: Mounted tyres



Figure 13: Documents

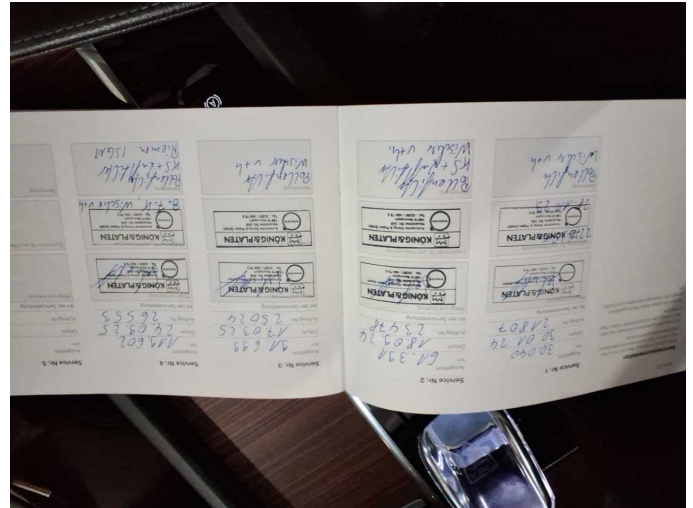


Figure 14: Documents

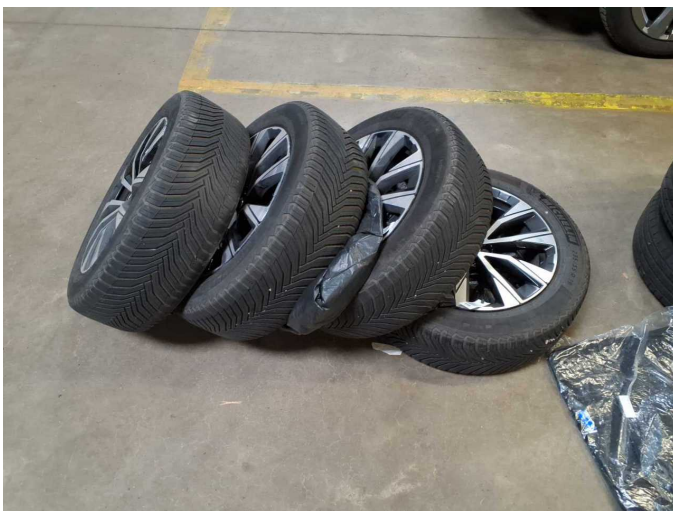


Figure 15: Additional tyres



Figure 16: Navigation



Figure 17: Misc.

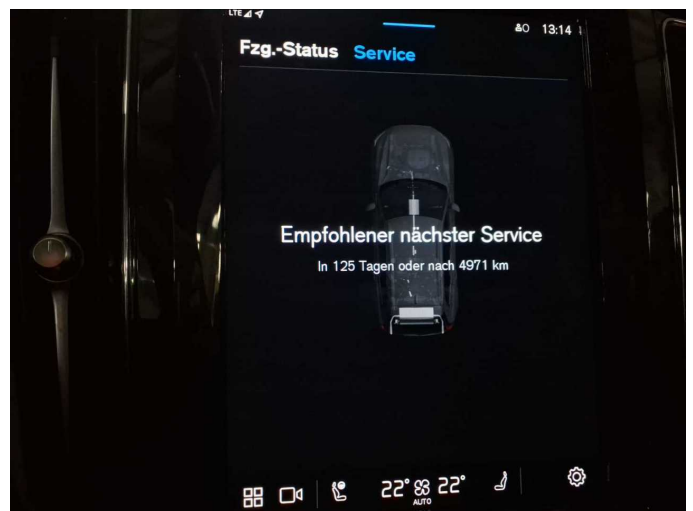


Figure 18: Misc.

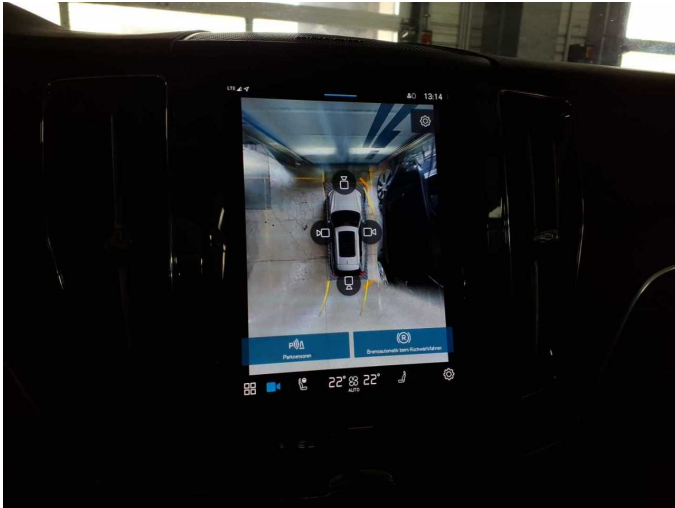


Figure 19: Misc.

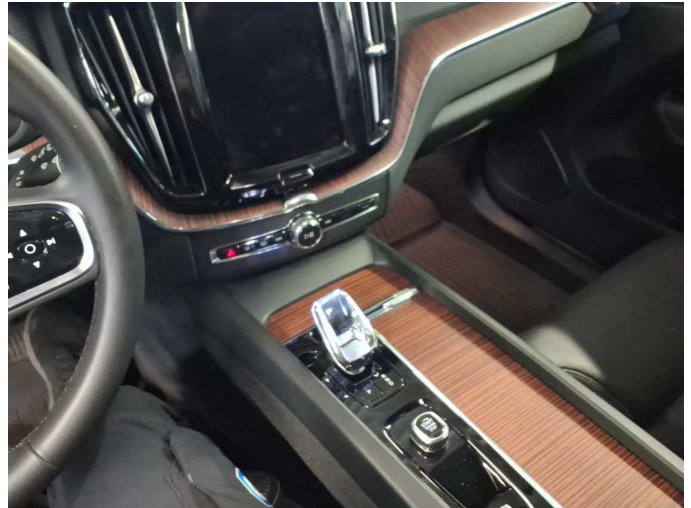


Figure 20: Misc.



Figure 21: Misc.



Figure 22: Misc.

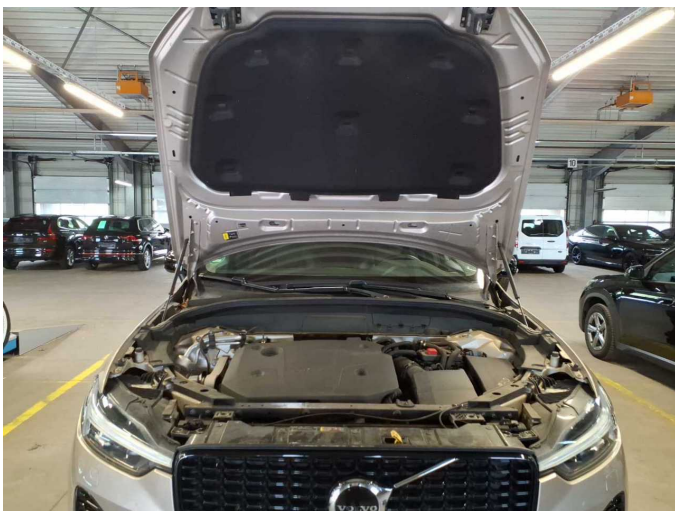


Figure 23: Misc.

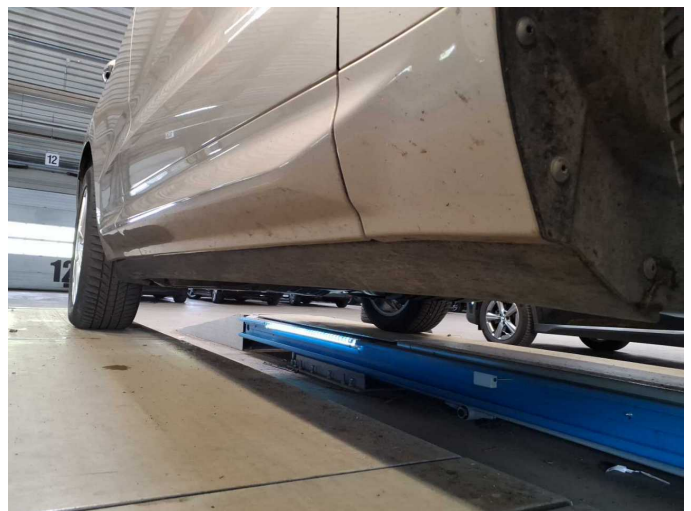


Figure 24: Misc.



Figure 25: Misc.



Figure 26: Misc.



Figure 27: Misc.

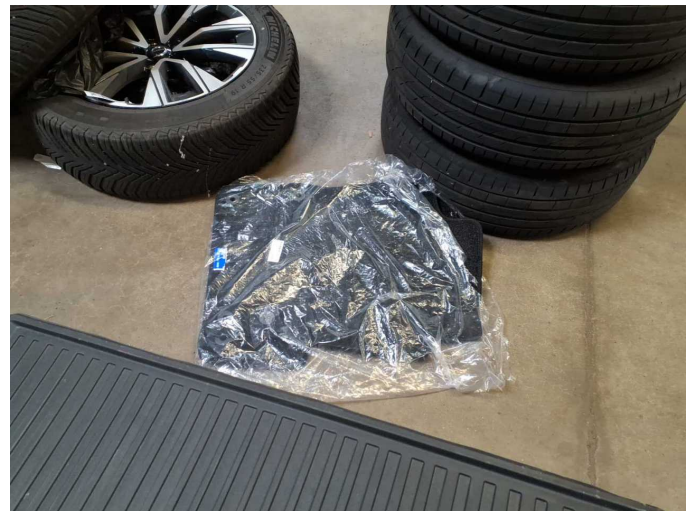


Figure 28: Misc.

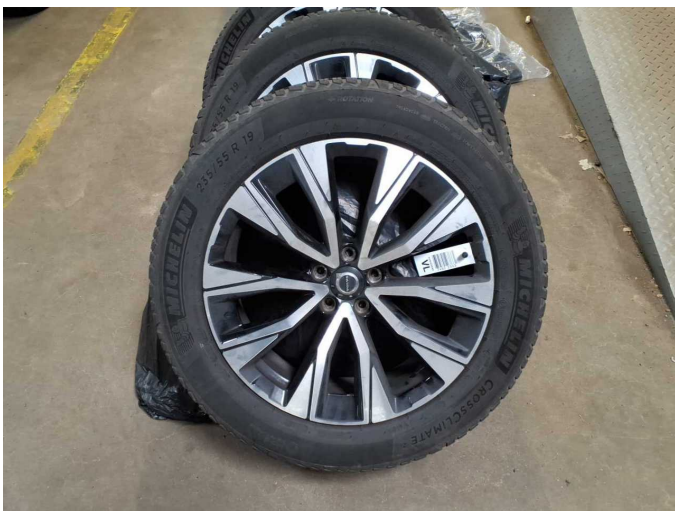
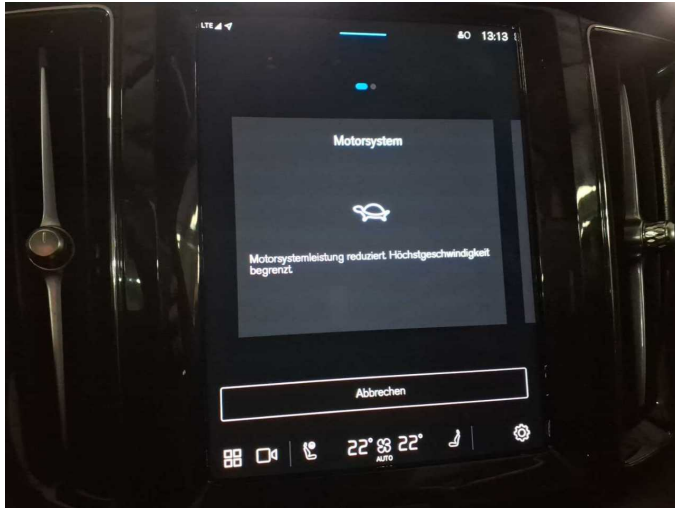


Figure 29: Misc.



Figure 30: Misc.



Damage 1: Engine: Engine - Functional / admissibility - Perform diagnosis



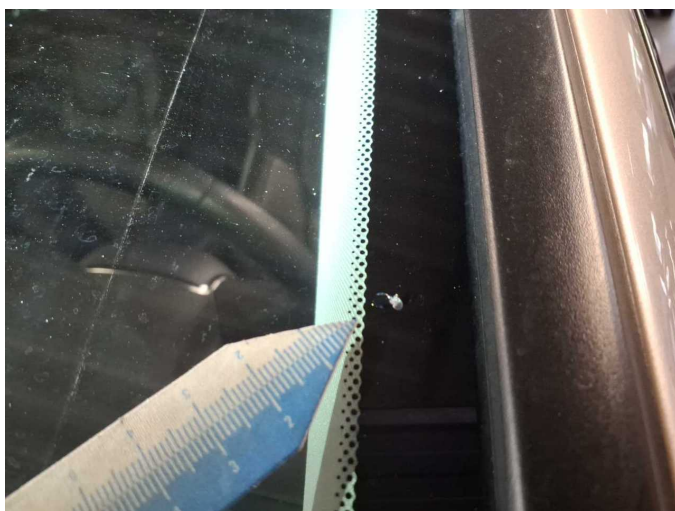
Damage 2: Door - rear right side: Door - dent(s) - Smooth repair work



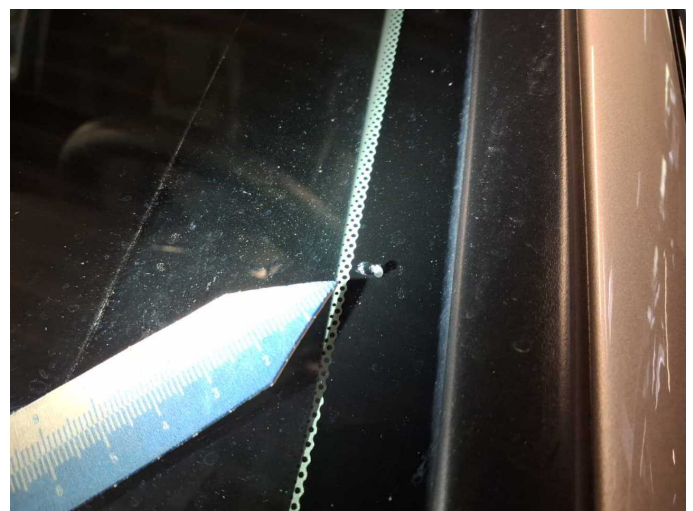
Damage 2: Door - rear right side: Door - dent(s) - Smooth repair work



Damage 3: Vehicle glazing: Windscreen - Stone chips - repair according to calculation



Damage 3: Vehicle glazing: Windscreen - Stone chips - repair according to calculation



Damage 3: Vehicle glazing: Windscreen - Stone chips - repair according to calculation



Wartungshistorie

(gemäß Auftraggeber Informationen)

Fahrgestellnummer: YV1UZK5V2R1729691
Hersteller / Modell: VOLVO VOLVO XC60 B4 D AWD Plus Dark

| Datum | KM-Stand | Beschreibung |
|------------|----------|--|
| 11.11.2025 | 124.762 | Systemtest/Eigendiagnose; Wasserpumpe ern |
| 24.09.2025 | 119.602 | Bremsflüssigkeit ern; Keilrippenriemen; Kraftstofffilter ern; Luftfiltereinsatz ern; Motoröl b. Wartung; Regelwartungsdienst |
| 23.07.2025 | 109.459 | Systemtest/Eigendiagnose |
| 17.03.2025 | 91.699 | Motoröl b. Wartung; Regelwartungsdienst |
| 14.10.2024 | 67.343 | Bremse Sonstiges; Bremsklötze vorne; Bremsscheiben + Klötze v; Bremsscheiben vorne |
| 18.09.2024 | 61.396 | Kraftstofffilter ern; Luftfiltereinsatz ern; Motoröl b. Wartung; Regelwartungsdienst; Reparatur Sonstiges; Wartung Sonstiges |
| 31.01.2024 | 88.627 | Luftfiltereinsatz ern; Motoröl b. Wartung; Regelwartungsdienst; Reparatur Sonstiges; Wartung Sonstiges |