

## Expertise

Protocol number: 45128926  
Order No. / Reference: 26114282  
Inspection date: 23 Apr 2026

Manufacturer: Ford

Model: Focus Turnier 1.5 EcoBlue Start-Stopp-System Aut.  
COOL&CONNECT

VIN: WF0PXXGCHPNB00403



### Vehicle details

#### Manufacturer / Type / Model / Equipment

Ford Focus Turnier 1.5 EcoBlue Start-Stopp-System Aut.  
COOL&CONNECT

Vehicle Identification number	WF0PXXGCHPNB00403
Mileage (Read)	81,695 km
First registration	17 Oct 2022
Number of holders	1

Power / Engine displacement	88 kw / 1,499 ccm
-----------------------------	-------------------

Fuel type / Cylinder	Diesel / 4
----------------------	------------

Gearbox / Number of gears	Automatic / 8
---------------------------	---------------

Type of drive	Front drive
---------------	-------------

Type of vehicle	Station wagon
-----------------	---------------

Colour / colour code	Frozen White
----------------------	--------------

Doors / Seats	5 / 5
---------------	-------

Upholstery type	Cloth
-----------------	-------

Colour of upholstery	Black-Grey
----------------------	------------



## Vehicle details

<b>Maintenance booklet / proof</b>	digital evidence / incomplete	<b>Next maintenance in</b>	24 %
<b>Last service on / at</b>	12/2024 at 58,985 km		
<b>Key is / should be</b>	2 / 2	<b>FZG documents</b>	ZB#2 (B) was available (copy), ZB#1 (S) was not available.
		<b>Letter No.</b>	GP458323
<b>Previous damage / Accident</b>	Detectable	<b>Repainting</b>	Detectable
<b>Inspection conditions</b>	sufficient	<b>Lifting equipment / pit</b>	yes
<b>Test drive</b>	Not performed	<b>Engine function test</b>	Performed
<b>Manufacturer key number/ type code number</b>	8566 / BPV 00636		
<b>Emission standard</b>	EURO6;WLTP;AP;PI/CI; M, N1 I	<b>fine dust sticker</b>	
<b>Permitted total weight</b>	2,035 kg	<b>Empty weight</b>	

## Tyres

### Mounted tyres

#	Tyre size	Type of tyre	Manufacturer	Tread depth
1)	205/60 R16 96H	Winter tyres on Steel rim with wheel cover	Goodyear	7mm / 7mm
2)	205/60 R16 96H	Winter tyres on Steel rim with wheel cover	Goodyear	8mm / 8mm

### Additional tyres

#	Tyre size	Type of tyre	Manufacturer	Tread depth
1)	205/60 R16 92V	Summer tyres on Steel rim with wheel cover	Goodyear	4mm / 4mm
2)	205/60 R16 92V	Summer tyres on Steel rim with wheel cover	Goodyear	4mm / 4mm

### Replacement

Typ	Tyre size	Type of tyre	Manufacturer	Tread depth
N	125/70 R16 96M	Summer tyres on Steel	Hankook	5 mm

**Legend: Tread depth information for the left tire is listed first, for the right tire it is listed second on the axle in the direction of travel.**



## Equipment

### Standard equipment

- Airbag: Passenger airbag deactivation
- Exterior mirrors in body color, driver and passenger side, electrically adjustable and heated (with integrated turn signals)
- Tires: 6.5 J x 16 design wheels (4) with 205/60 R16 tires (in 5-spoke design, in black-silver)
- Roof rails, black
- Diesel particulate filter (DPF)
- Electronic Shifter
- Driver information system with on-board computer, color (10.7 cm screen diagonal)
- Electric front and rear windows (with all-around closing function)
- Luggage compartment cover
- Speed limiter (Intelligent speed limiter with speed limit display)
- Cruise control
- Transmission: 8-speed automatic transmission
- Illuminated glove compartment
- Back window, heater
- Rear window wiper
- Interior lighting with LED technology (front and rear and map reading lights at the front)
- Isofix mounting (including top tether anchor points on the outer seats of the 2nd row)
- Air conditioning, manual
- Headrests: 2 front and 3 rear, height adjustable
- LED headlights (LED low beam - LED high beam - LED daytime running lights incl. integrated LED turn signals at the front - LED cornering lights, static, incl. integrated LED fog light function and maneuvering light)
- Make-up mirrors in driver and passenger sun visors
- Front center console "Premium" (sliding armrest - cup holders - storage compartments - 12-volt and USB connection)
- Post-Collision Assist (In the event of a severe collision, which would also deploy the airbag and in which the driver might be incapacitated, this system initiates the braking process. This reduces the risk of colliding with further obstacles and road users after the initial collision. The driver can intervene and operate the accelerator or brake pedal manually throughout the entire process.)
- Tire Pressure Monitoring System (TPMS)
- Electro-mechanical speed-dependent power steering (EPAS - Electric Power Assisted Steering)
- Seats: Driver's seat height adjustable (with manually adjustable lumbar support)
- Seats: Rear seat backrest (foldable, 60:40 split)
- Start-stop system
- Carpet floor mats in the front
- Warning system for unfastened seat belts for the 1st and 2nd rows of seats
- Anti-lock braking system (ABS) with electronic brake force distribution (EBD)
- Attachment points behind the second row of seats for mounting the safety partition net
- Hill start assist
- Fabric headliner
- Roof spoiler painted in car color
- Tachometer
- Electronic Stability Program (ESP) (with Emergency Brake Assist (EBA) and Traction Control System (TCS))
- Lane keeping assist including lane keeping assist
- Electronic parking brake
- FordPass Connect including eCall, live traffic information (only with navigation) and Wi-Fi hotspot (information about the current status or location of the vehicle as well as control of selected vehicle functions via smartphone with the FordPass app - eCall emergency call system to send an emergency call in the event of an accident or when manually activated - Real-time traffic information (only in conjunction with navigation system) - Wi-Fi hotspot (up to 4G/LTE7, for up to 10 mobile devices))
- Intelligent safety system (front airbag for driver and front passenger - front and rear head and shoulder airbags - side airbag for driver and front passenger - seat belt tensioners and force limiters in the front and on the outer seats of the 2nd row - 3-point seat belts on all seats, height-adjustable in the front - safety pedal assembly)
- Leather gear knob
- Steering wheel: 3-spoke design steering wheel (in Sensico leather look)
- Steering column, adjustable (adjustable in height and reach)
- MyKey key system (individually programmable second key)
- Front and rear parking pilot system
- Upholstery: Cloth
- Pre-Collision Assist (Forward Alert system with pedestrian and bicycle detection)
- Radio: Ford SYNC 3 Light with AppLink, 8" touchscreen and DAB/DAB+ (6 speakers - Android Auto and Apple CarPlay - Bluetooth hands-free system and audio streaming - steering wheel controls - voice control via phone - USB port)
- Headlight assistant with day/night sensor
- Seats: Passenger seat height-adjustable, manually (with adjustable lumbar support)
- Seats: Map grid on the driver's and front passenger's seat backrests
- Seats: Front sports seats with enhanced lateral support
- 12-volt power outlet in the luggage compartment
- Lashing eyes in the luggage compartment
- Electronic immobilizer



- Central locking with remote control and remote luggage compartment release

**Extra equipment**

- Detachable towbar (including ESP trailer stabilization)
- Paint finish: Frozen White
- Navigation: Ford SYNC 3 with AppLink, 8" touchscreen and DAB/ DAB+ (Ford navigation system with AppLink, 8" touchscreen (20.3 cm screen diagonal) - 6 speakers - Android Auto and Apple CarPlay - Bluetooth hands-free system and audio streaming - Steering wheel controls - Radio player - USB port - Voice control via audio and telephone - Acoustic and visual route guidance, dynamic navigation with enhanced traffic information system, lane guidance and road map for Europe)
- Package: Winter (heated windscreen - heated steering wheel - individually and variably heated front seats)
- Wheels: Emergency spare wheel (permitted for use up to max. 80 km/h - steel wheel 3.5 J x 16 with 125/70 R16 tire)
- Attachment points behind the first row of seats (according to ISO 27955 - for safety partition grilles (available as an accessory from your Ford dealer))
- Package: Driver Assistance Package II (Drive Assist Intelligent adaptive cruise control Lane keeping assist Traffic jam assist with Stop&Go Traffic sign recognition Wrong-way driver warning radio Evasive steering assist Distance display and distance warning Driver drowsiness detection High beam assist (in conjunction with adaptive LED matrix headlights with glare-free high beam assist) Blind spot assist with cross traffic alert including emergency braking function (when reversing out of parking spaces) and trailer recognition Rear view camera with split view Electrically folding exterior mirrors with surround view)
- Safety partition net for luggage compartment

**Brief expert findings**

Documents submitted	At the time of the inspection, the vehicle registration certificate Part 2 (title) was available, but the vehicle registration certificate Part 1 (document) was not. (Copy)
VIN comparison	The vehicle identification number (VIN) was read from the vehicle and its conformity with the submitted documents was confirmed by the undersigned during the inspection.
Inspection	The inspection conditions were sufficient for the assessment of the vehicle. Lifting equipment and/or a pit were available for examining the vehicle.
Test drive	No test drive/shunting maneuver was carried out during the inspection of the vehicle.
Engine function test	An engine test run was performed.

**Value reducing factors**

No.	Component group	Description
1	Misc.	Inspection / maintenance (Nachweis 2025 fehlt) - Incomplete - No deduction
2	Rear bumper	Rear bumper (Lack gebrochen) - Paint defect - Repair and paint

**Missing parts**

<b>Description</b>
Interior - Boot cover / roller cover

**Previous damages**

No.	Previous damage	Extent of damage (Net)
1	Side - left, Provided by user / customer, from 11 Nov 2025	4.821,88 €

**Accident damages**

No.	Accident
1	Side right

**Repainting**



## No. Repainting

1 Mudguard - left side, Door - rear left side, Door - front left side, Professionally carried out, Invoice of repair done Non-existent

## Paint coat thickness measurement

Mudguard - left side	201 µm	Door - rear left side	189 µm
Door - front left side	163 µm		

## Order/Scope of Order

An order was placed to prepare a sales report for the described vehicle. This report includes the following:

- Description of key vehicle information
- Documentation of equipment features  
(*Delivery by third-party service providers*)
- Documentation of damage, defects, missing parts
- Documentation of prior damage, unrepaired prior damage, repainting
- A brief visual or functional inspection of the equipment details, if possible.  
(*Functional testing of driver assistance systems is not included in the scope of services!*)
- a photographic documentation of the vehicle

## Basis for the order

This product is based on the guidelines for vehicle returns and valuations published by Alphabet Fleet GmbH. The expert makes the specific findings in each individual case objectively, within the framework of the prescribed standards, based on their own expertise.

The vehicle inspection takes place in a fully assembled, unassembled state.

Damage or defects that can only be detected during disassembly/diagnostic work or through further investigation remain within the realm of prognostic risk. An increased risk exists due to concealed defects caused by fraudulent misrepresentation and which were not identifiable by the expert.

Damage or defects resulting from normal use or wear and tear of the vehicle will be accepted in accordance with the applicable standard.

There was no explicit identification or monetary consideration of the expected features within the product.

Features which, in their nature and extent, slightly exceed normal use but do not constitute unacceptable damage, will be documented and indicated as signs of wear, if applicable.

Damage or defects that, according to the applicable standard, can no longer be attributed to normal use or wear and tear are listed under "Value Reducing Factors" in the product description.

Depending on the product specification, a monetary ID can be provided. If this takes place, the costs can be 100% d or pro rata depending on the vehicle's age and mileage.

## Previous damages

Non-repaired previous damages were found at the vehicle. The necessary repair costs are listed in the expert report or if necessary, are listed in detail in a separately enclosed repair cost calculation.



ALPHABET

Figure 1: Diagonal front (left)



ALPHABET

Figure 2: Diagonal front (right)



ALPHABET

Figure 3: Diagonal rear (left)



ALPHABET

Figure 4: Diagonal rear (right)



Figure 5: Interior - front



Figure 6: Interior - rear



Figure 7: Instrument cluster



Figure 8: Instrument panel



Figure 9: Interior 360° view



Figure 10: Cargo area



Figure 11: VIN



Figure 12: Mounted tyres



Figure 13: Documents



Figure 14: Documents

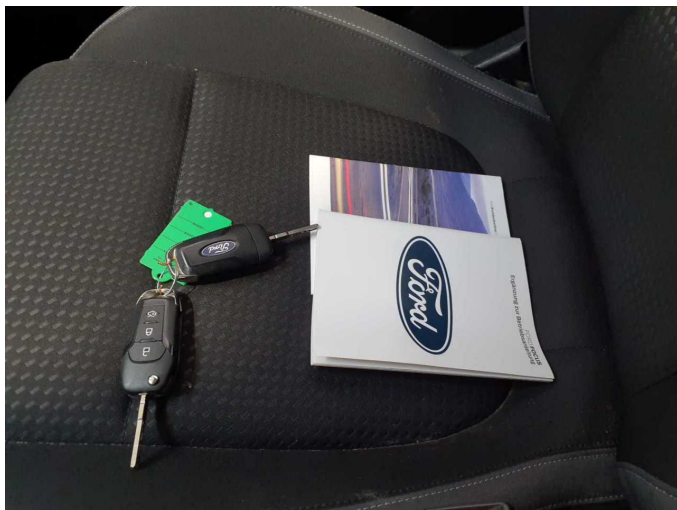


Figure 15: Documents



Figure 16: Additional tyres

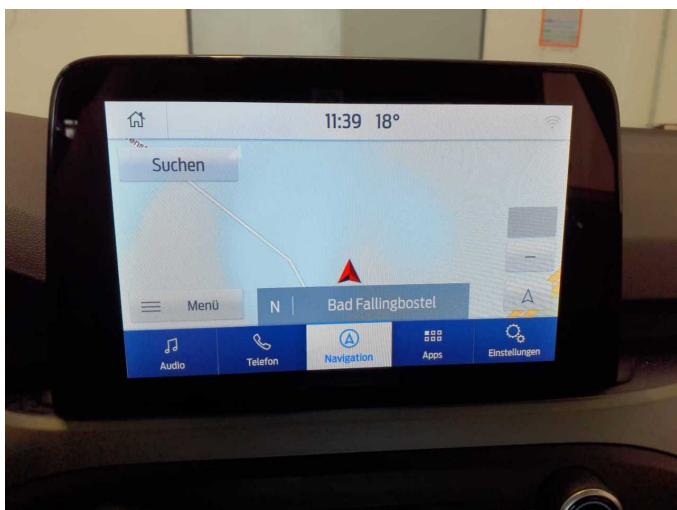


Figure 17: Navigation



Figure 18: Misc.



Figure 19: Misc.



Figure 20: Misc.



Figure 21: Misc.



Figure 22: Misc.



Figure 23: Misc.



Figure 24: Misc.



Figure 25: Misc.



Damage 2: Rear bumper: Rear bumper (Lack gebrochen) - Paint defect - Repair and paint



Damage 2: Rear bumper: Rear bumper (Lack gebrochen) - Paint defect - Repair and paint



Accident 1: Side right



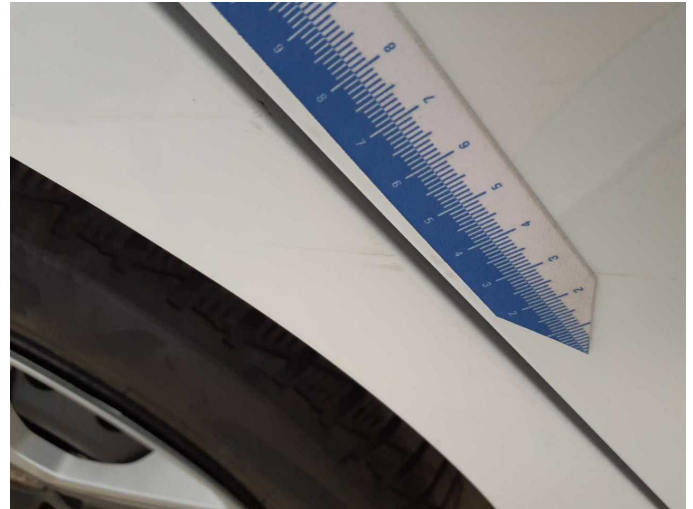
Accident 1: Side right



Accident 1: Side right



**Accident 1:** Side right



**Accident 1:** Side right



**Accident 1:** Side right



**Accident 1:** Side right



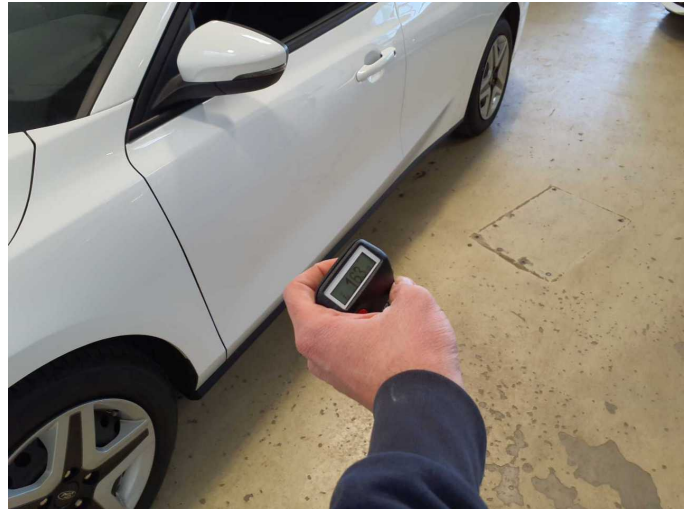
**Accident 1:** Side right



**Repainting 1:** Mudguard - left side, Door - rear left side, Door - front left side



**Repainting 1:** Mudguard - left side, Door - rear left side, Door - front left side



**Repainting 1:** Mudguard - left side, Door - rear left side, Door - front left side



**Repainting 1:** Mudguard - left side, Door - rear left side, Door - front left side



**Repainting 1:** Mudguard - left side, Door - rear left side, Door - front left side



**Repainting 1:** Mudguard - left side, Door - rear left side, Door - front left side



# Wartungshistorie

(gemäß Auftraggeber Informationen)

Fahrgestellnummer: WF0PXXGCHPNB00403  
Hersteller / Modell: FORD FORD Focus Turnier 1.5 EcoBlue Start-Stopp-System Aut.  
COOL&CONNECT

Datum	KM-Stand	Beschreibung
26.02.2026	81.574	AU; Bremse Sonstiges; Bremsklötze hinten; Bremsklötze vorne; Bremsscheiben + Klötze h; Bremsscheiben + Klötze v; Bremsscheiben hinten; Bremsscheiben vorne
18.12.2024	58.985	Bremsflüssigkeit; Bremsflüssigkeit ern; Kraftstofffilter ern; Luftfiltereinsatz ern; Motoröl b. Wartung; Ölfilter ern; Regelwartungsdienst; Systemtest/ Eigendiagnose; Wartung Sonstiges
23.08.2023	29.123	Motoröl b. Wartung; Ölfilter ern; Regelwartungsdienst; Wartung Sonstiges