

Expertise

Protocol number: 46014733
Order No. / Reference: 26464955
Inspection date: 17 Jun 2026

Manufacturer: Skoda

Model: Kodiaq 2.0 TDI DSG Style

VIN: TMBJJ9NS5P8052350



Vehicle details

Manufacturer / Type / Model / Equipment

Skoda Kodiaq 2.0 TDI DSG Style

Vehicle Identification number TMBJJ9NS5P8052350

Mileage (Read) 151,953 km

First registration 25 May 2023

Number of holders 1

Power / Engine displacement 110 kw / 1,968 ccm

Fuel type / Cylinder Diesel / 4

Gearbox / Number of gears Automatic / 7

Type of drive Front drive

Type of vehicle SUV

Colour / colour code Graphite Grau Metallic (F7C)

Doors / Seats 5 / 5

Upholstery type Cloth / leather combination

Colour of upholstery Black-Grey



Vehicle details

Maintenance booklet / proof	digital proof / complete	Next maintenance in	22,200 km
Last service on / at	04/2026 at 144,064 km		
Key is / should be	2 / 2	FZG documents	ZB#2 (B) was available (copy), ZB#1 (S) was not available.
		Letter No.	GT100595
Previous damage / Accident	Detectable	Repainting	None detectable
Inspection conditions	sufficient	Lifting equipment / pit	yes
Test drive	Not performed	Engine function test	Performed
Manufacturer key number/ type code number	8004 / ART 03815		
Emission standard	EURO6;WLTP;AP;PI/CI; M, N1 I	fine dust sticker	
Permitted total weight	2,359 kg	Empty weight	

Tyres

Mounted tyres

#	Tyre size	Type of tyre	Manufacturer	Tread depth
1)	235/50 R19 99V	Summer tyres on Light alloy	Hankook	5mm / 5mm
2)	235/50 R19 99V	Summer tyres on Light alloy	Hankook	6mm / 6mm

Additional tyres

#	Tyre size	Type of tyre	Manufacturer	Tread depth
1)	215/65 R17 99H	Winter tyres on Light alloy	Pirelli	5mm / 5mm
2)	215/65 R17 99H	Winter tyres on Light alloy	Pirelli	5mm / 5mm

Replacement

Typ	Tyre size	Type of tyre	Manufacturer	Tread depth
	Tirefit	Expiration date 03/2027		

Legend: Tread depth information for the left tire is listed first, for the right tire it is listed second on the axle in the direction of travel.



Equipment

Standard equipment

- 12V socket in the center console and in the trunk
- Storage compartments behind the wheel arches in the trunk
- Airbag, driver's knee airbag
- Airbag, front side airbags
- Anti-lock braking system (ABS)
- Dashboard in black / black, door trim in black
- Electrically adjustable and heated exterior mirrors with integrated side indicators
- Hydraulic brake assist (HBA)
- Grey headliner
- Decorative inlay Linear Diamonds
- Digital Cockpit (8")
- Third brake light
- eCall
- Electronic transverse differential lock (XDS+)
- Driving light assistant and rain sensor
- High Beam Assist (Light Assist)
- Front footwell lighting
- Closed storage compartment on the driver's side
- Transmission: 7-speed dual-clutch transmission (DSG)
- Illuminated glove compartment
- Kessy - keyless entry and start-stop system
- Climatronic air conditioning (2-zone)
- Front and rear headrests are height-adjustable.
- LED matrix headlights and dynamic high beam assist (Light Assist)
- Steering wheel: Leather steering wheel with multifunction buttons including paddle shifters.
- Front center armrest, including storage compartment
- Multi-collision brake
- Upholstery: Fabric-leather
- Radio: Bolero infotainment system
- Radio accessories: Digital radio reception DAB+
- Tire Mobility Kit
- Wheels: 18" Elbrus alloy wheels
- Heated windshield washer nozzles, front
- Headlights washer / wiper system
- Kodiaq seat belts
- Seats: Adjustable lumbar support in the front seats
- Seats: Height-adjustable front seats
- Seats: Remote release of the rear seat backrests (2nd row) in the boot
- Speed limiter
- Telephone: Convenient hands-free telephone system including phone box
- Lashing eyes in the trunk
- Central locking with remote control
- Storage compartment on the left wheel arch
- front aero windshield wipers
- Airbag, driver and passenger
- Airbag, head airbags
- Allergen filter
- Traction control (ASR)
- Electrically folding exterior mirrors including interior and driver's side mirrors with automatic dimming
- Hill start assist
- Care Connect: Proactive services (10-year term)
- Roof rails, anodized
- Diesel particulate filter
- Tachometer
- Easy Start (start-stop button)
- Electronic parking brake including auto-hold function
- ESC Electronic Stability Control
- Electric windows front and rear
- Front radar assistant including city emergency braking function with pedestrian detection
- Cruise control
- Tinted windows
- Isofix anchorage on the outer rear seats including top tether
- Boot cover, roll-up and removable
- Paint finish: Solid
- LED taillights in crystal glass look with animated turn signals
- Reading lights at the front of the headliner
- Rear center armrest with cup holders
- Engine drag torque control (MSR)
- Front and rear parking sensors
- Wheel arch cover
- Radio accessories: 8 speakers
- Radio accessories: Wireless SmartLink
- Tire pressure monitoring
- Rear seat backrest split 60:40, foldable, longitudinally adjustable, backrest angle adjustable
- Electromechanical power steering
- Seats: Heated front seats
- Seats: Electrically adjustable front seats with memory function
- Skoda Care Connect
- Sun visor on driver and passenger side with illuminated vanity mirror
- Front door sill trims
- Variable fastening concept in the trunk
- Immobiliser



Extra equipment

- Swiveling trailer hitch (with electric release, including trailer stabilization)
- Paint finish: Metallic / Pearl effect
- LED ambient lighting (decorative strips in the door panels with selectable color climate, LED reading lights in the front, LED lighting for the make-up mirrors in the sun visors)
- Electric panoramic sunroof including sunshade (no glasses compartment in the headliner)
- Proactive occupant protection including rear side airbags
- Wheels: 19" alloy wheels Triglav black gloss turned (7Jx19 tires 235/50 R19 99V ET43)
- Accessories: Reversible boot mat
- Traveller assistance system (DSG) (Predictive Adaptive Cruise Control pACC (control range up to 210 km/h) - Lane Assist - Adaptive Lane Guidance - Traffic Jam and Emergency Assist - Traffic Sign Recognition)
- Package: Business Columbus (Style) (Dynamic radio navigation system Columbus - 9.2" capacitive color display - Digital Cockpit Plus (10") - Driver fatigue detection - 230V socket and one USB charging port (Type-C) - Electric tailgate operation including comfort opening - Sunset - Luggage net partition - Infotainment Online (3-year subscription))
- Rear view camera

Brief expert findings

Documents submitted	At the time of the inspection, the vehicle registration certificate Part 2 (title) was available, but the vehicle registration certificate Part 1 (document) was not. (Copy)
VIN comparison	The vehicle identification number (VIN) was read from the vehicle and its conformity with the submitted documents was confirmed by the undersigned during the inspection.
Inspection	The inspection conditions were sufficient for the assessment of the vehicle. Lifting equipment and/or a pit were available for examining the vehicle.
Test drive	No test drive/shunting maneuver was carried out during the inspection of the vehicle.
Engine function test	An engine test run was performed.

Value reducing factors

No.	Component group	Description
1	Side panel - rear left side	Side panel - Scratch(es) - Smart repair
2	Door - rear right side	Door - Scratch(es) - Smart repair

Wear and tear

No.	Component group	Description
1	Misc.	Main inspection - No evidence - No deduction

The vehicle shows signs of wear and tear commensurate with its age and use.

Previous damages

No.	Previous damage	Extent of damage (Net)
1	Rear, Provided by user / customer, from 8 Dec 2023	2.795,26 €



Order/Scope of Order

An order was placed to prepare a sales report for the described vehicle. This report includes the following:

- Description of key vehicle information
- Documentation of equipment features
(Delivery by third-party service providers)
- Documentation of damage, defects, missing parts
- Documentation of prior damage, unrepaired prior damage, repainting
- A brief visual or functional inspection of the equipment details, if possible.
(Functional testing of driver assistance systems is not included in the scope of services!)
- a photographic documentation of the vehicle

Basis for the order

This product is based on the guidelines for vehicle returns and valuations published by Alphabet Fleet GmbH. The expert makes the specific findings in each individual case objectively, within the framework of the prescribed standards, based on their own expertise.

The vehicle inspection takes place in a fully assembled, unassembled state.

Damage or defects that can only be detected during disassembly/diagnostic work or through further investigation remain within the realm of prognostic risk. An increased risk exists due to concealed defects caused by fraudulent misrepresentation and which were not identifiable by the expert.

Damage or defects resulting from normal use or wear and tear of the vehicle will be accepted in accordance with the applicable standard.

There was no explicit identification or monetary consideration of the expected features within the product.

Features which, in their nature and extent, slightly exceed normal use but do not constitute unacceptable damage, will be documented and indicated as signs of wear, if applicable.

Damage or defects that, according to the applicable standard, can no longer be attributed to normal use or wear and tear are listed under "Value Reducing Factors" in the product description.

Depending on the product specification, a monetary ID can be provided. If this takes place, the costs can be 100% or pro rata depending on the vehicle's age and mileage.

Previous damages

According to available information previous damages were repaired at the vehicle. Traces of repairs, which allow conclusions about the area of repair, were not recognizable during the inspection.



Figure 1: Diagonal front (left)



Figure 2: Diagonal front (right)



Figure 3: Diagonal rear (left)



Figure 4: Diagonal rear (right)



Figure 5: Interior - front



Figure 6: Interior - rear



Figure 7: Instrument cluster



Figure 8: Instrument panel



Figure 9: Interior 360° view



Figure 10: Cargo area



Figure 11: VIN



Figure 12: Mounted tyres

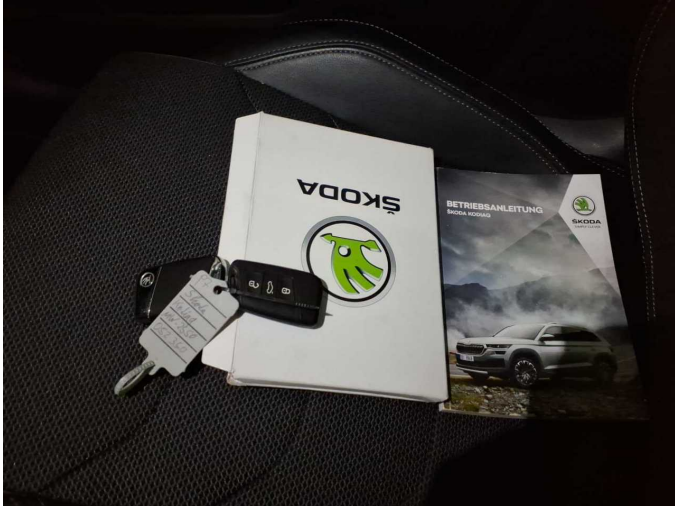


Figure 13: Documents



Figure 14: Additional tyres



Figure 15: Navigation



Figure 16: Misc.



Figure 17: Misc.



Figure 18: Misc.



Figure 19: Misc.



Figure 20: Misc.



Figure 21: Misc.

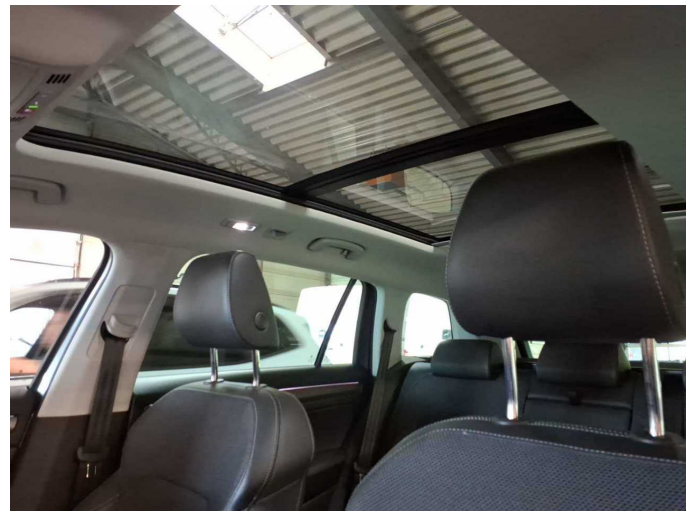


Figure 22: Misc.

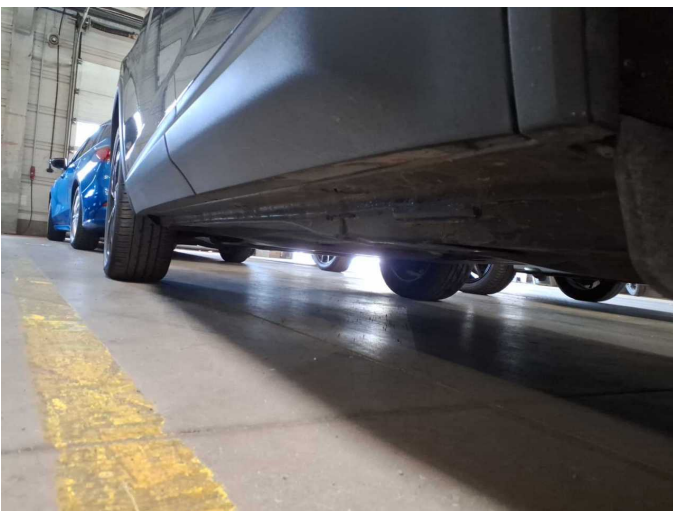


Figure 23: Misc.

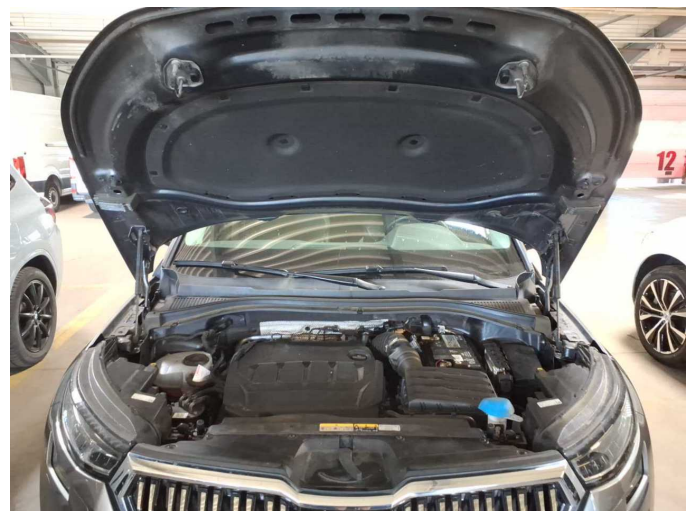


Figure 24: Misc.



Figure 25: Misc.



Figure 26: Misc.

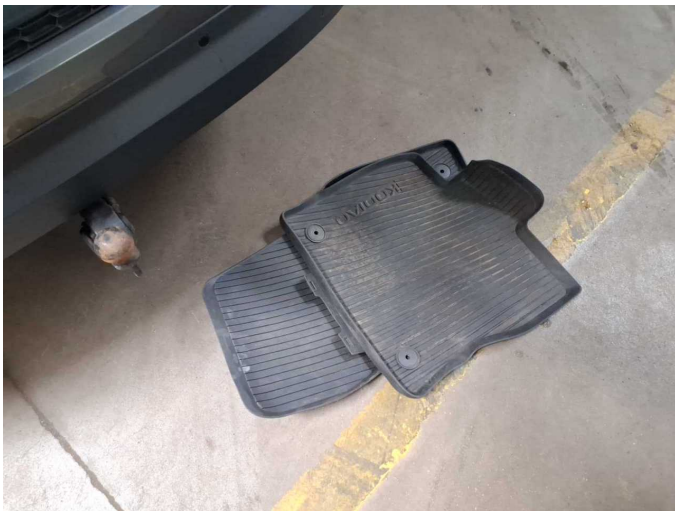


Figure 27: Misc.



Figure 28: Misc.

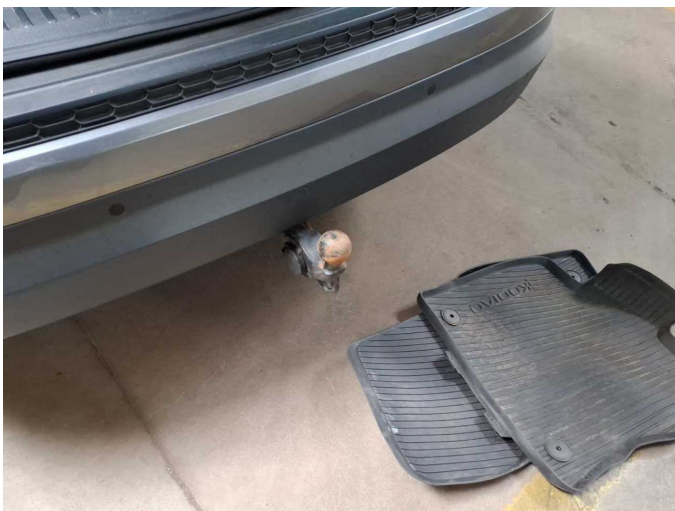


Figure 29: Misc.



Figure 30: Misc.



Damage 1: Side panel - rear left side: Side panel - Scratch(es) - Smart repair



Damage 1: Side panel - rear left side: Side panel - Scratch(es) - Smart repair



Damage 2: Door - rear right side: Door - Scratch(es) - Smart repair



Damage 2: Door - rear right side: Door - Scratch(es) - Smart repair



Wartungshistorie

(gemäß Auftraggeber Informationen)

Fahrgestellnummer: TMBJJ9NS5P8052350
Hersteller / Modell: SKODA SKODA Kodiaq 2.0 TDI DSG Style

Datum	KM-Stand	Beschreibung
08.05.2026	148.500	HU + AU
18.04.2026	144.064	Motoröl b. Wartung; Ölfilter ern; Regelwartungsdienst; Wartung Sonstiges
04.09.2025	115.159	Bremsflüssigkeit ern; Getriebeöl ern/prüfen; Motoröl b. Wartung; Regelwartungsdienst
26.03.2025	93.005	Reparatur Sonstiges
04.02.2025	88.927	Bremse Sonstiges; Bremsklötze hinten; Bremsscheiben hinten; Kraftstofffilter ern; Luftfiltereinsatz ern; Motoröl b. Wartung; Ölfilter ern; Regelwartungsdienst; Wartung Sonstiges
24.07.2024	59.419	Motoröl b. Wartung; Ölfilter ern; Regelwartungsdienst; Wartung Sonstiges
29.11.2023	28.072	Motoröl b. Wartung; Ölfilter ern; Regelwartungsdienst; Wartung Sonstiges