



## VOLKSWAGEN PASSAT VARIANT:

Vinnumber:	<b>WVWZZZ3CZME065752</b>	Versionname:	<b>2.0 TDI 90kW DSG Style Business</b>
First Registrationdate:	<b>19/01/2021</b>	Fiscalpower:	
Expertise Mileage:	<b>178301</b>	Power Kw:	<b>90</b>
Bodytype:		Body colour:	<b>Grey</b>
Gearbox:	<b>Automatic</b>	Type of rims (mounted):	<b>Steel</b>
Transmission:		Parking lot:	<b>2403</b>
Fueltype:	<b>Diesel</b>		
Type of rims (mounted):	<b>Steel</b>		
Certificate of Conformity:	<b>Yes</b>		
Category:	<b>Passenger Car</b>		
Registration Certificate Car (BE):	<b>Yes</b>		
Registration Certificate Home (BE):	<b>No</b>		

## Options

Number of keys total	<b>2</b>	Luggage cover	
Cruise Control		Front parking sensors	
Steering wheel multifunctional		Rear parking sensors	
Seats F heated		Type of Tow bar	<b>Tow bar collapsible</b>
Radio multimedia			
Type of headlighting	<b>Headlighting LED</b>		
Type of GPS	<b>GPS big screen color</b>		
Type of Lining	<b>Lining artificial leather</b>		
Type of climate control	<b>Autom climate control</b>		

## Limited Technical Inspection

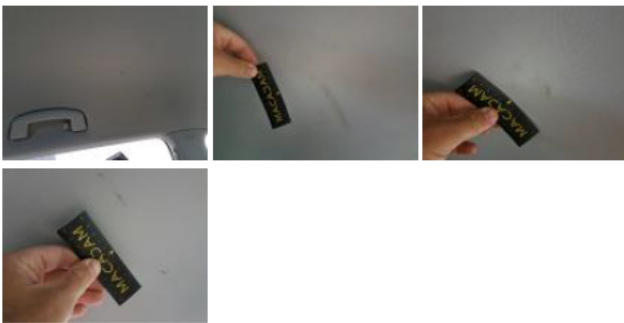
## Tyres

215/60/16/95 V				
Summer tyres:	Fr.L.	<b>Continental: 3 mm</b>	Fr.R.	<b>Continental: 3 mm</b>
	Re.L.	<b>Bridgestone: 3 mm</b>	Re.R.	<b>Bridgestone: 3 mm</b>
Tyre profile depth FL				<b>3.0</b>
Tyre profile depth FR				<b>3.0</b>
Tyre profile depth RL				<b>3.0</b>
Tyre profile depth RR				<b>3.0</b>
Tyre size FL				<b>215/60 R 16 95 V</b>
Tyre size FR				<b>215/60 R 16 95 V</b>
Tyre size RL				<b>215/60 R 16 95 V</b>
Tyre size RR				<b>215/60 R 16 95 V</b>
Tyre type FL				<b>Summer</b>
Tyre type FR				<b>Summer</b>
Tyre type RL				<b>Summer</b>
Tyre type RR				<b>Summer</b>
Tyre make FL				<b>256</b>
Tyre make FR				<b>256</b>
Tyre make RL				<b>255</b>
Tyre make RR				<b>255</b>

## Assistance equipment

Repair kit	<b>Yes</b>	Compressor	<b>Yes</b>
Number of charging cables (normal)	<b>0</b>		
Number of charging cables (rapid charge)	<b>0</b>		

Total cost ex VAT	<b>1674,78</b>
Roof liner, Dirty, Cleaning	<b>29,16</b>



Interior, Worn, Acceptable 0,00



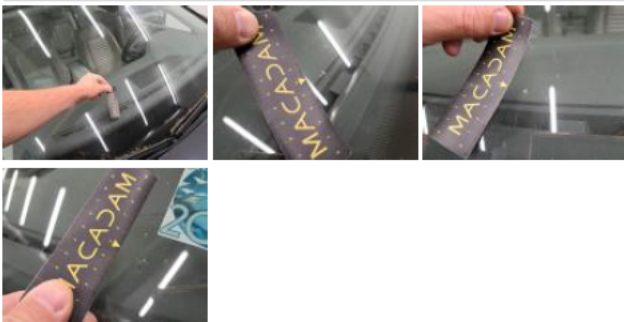
Armrest, Damaged, Forfeit 192,78



Door panel FL, Scratch(es), Acceptable 0,00



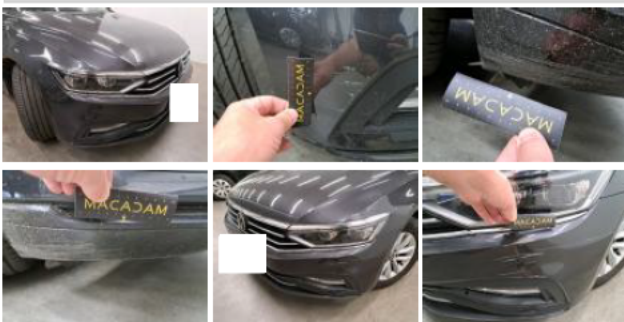
Windscreen, Stone chip(s), Windscreen repair 0,00



Bonnet, Scratch(es), Repair and paint (complete) 406,19



Bumper F, Dent(s) and scratch(es), Repair and paint (complete) 0,00





Headlight L, Scratch(es), Replace 0,00



Bumper moulding F, Scratch(es), Replace 0,00



Grille, Broken, Replace 519,60



Alloy rim RL, Scratch(es), Acceptable 0,00



Step L, Dent(s), Acceptable 0,00



Wing RL, Scratch(es), Repair and paint (complete) 431,58



Door RL, Scratch(es), Acceptable 0,00



Bumper R, Scratch(es), Acceptable 0,00





Tailgate / Boot, Scratch(es), Acceptable 0,00



Alloy rim FR, Scratch(es), Acceptable 0,00



Wing RR, Dent(s), Paintless dent repair 95,47



Door RR, Scratch(es), Acceptable 0,00



Wing RR, Scratch(es), Acceptable 0,00

