

Expertise

Protocol number: 45856391
Order No. / Reference: 26361954
Inspection date: 5 Jun 2026

Manufacturer: Volvo

Model: XC60 B4 D Geartronic Momentum Pro

VIN: YV1UZZK5VDN1960988



Vehicle details

Manufacturer / Type / Model / Equipment

Volvo XC60 B4 D Geartronic Momentum Pro

Vehicle Identification number YV1UZZK5VDN1960988

Mileage (Read) 75,148 km

First registration 14 Oct 2021

Number of holders 1

Power / Engine displacement 145 kw / 1,969 ccm

Fuel type / Cylinder Hybrid Diesel / E / 4

Gearbox / Number of gears Automatic / 8

Type of drive Front drive

Type of vehicle SUV

Colour / colour code Pine Grey Metallic

Doors / Seats 5 / 5

Upholstery type Cloth

Colour of upholstery Black-Anthracite



Vehicle details			
Maintenance booklet / proof	digital proof / complete	Next maintenance in	106 Tag(e)
Last service on / at	09/2025 at 94,000 km		
Key is / should be	2 / 2	FZG documents	ZB#2 (B) was available (copy), ZB#1 (S) was not available.
		Letter No.	GC689432
Previous damage / Accident	None detectable	Repainting	None detectable
Inspection conditions	sufficient	Lifting equipment / pit	yes
Test drive	Not performed	Engine function test	Performed
Manufacturer key number/ type code number	9101 / BTJ 00006		
Emission standard	EURO6;WLTP;AP;PI/CI; M, N1 I	fine dust sticker	
Permitted total weight	2,390 kg	Empty weight	

Tyres

Mounted tyres				
#	Tyre size	Type of tyre	Manufacturer	Tread depth
1)	235/60 R18 107V	Summer tyres on Light alloy	Continental	6mm / 6mm
2)	235/60 R18 107V	Summer tyres on Light alloy	Continental	5mm / 5mm
Additional tyres				
#	Tyre size	Type of tyre	Manufacturer	Tread depth
1)	235/60 R18 107H	Winter tyres on Light alloy	Pirelli	5mm / 5mm
2)	235/60 R18 107H	Winter tyres on Light alloy	Pirelli	8mm / 8mm
Replacement				
Typ	Tyre size	Type of tyre	Manufacturer	Tread depth
	Tirefit	Expiration date 09/2025		

Legend: Tread depth information for the left tire is listed first, for the right tire it is listed second on the axle in the direction of travel.

TÜV SÜD Auto Partner GmbH
Wiesenring 2
04159 Leipzig

Inspection location
Hartmann Fleet Professionals GmbH
Leerenstraße 25
29683 Bad Fallingbommel



Equipment



Standard equipment

- 12-volt socket at the front
- ABS - Anti-lock Braking System (with EBV)
- Airbag, driver's knee airbag
- Aluminum door sill plates with Volvo lettering at the front
- Aluminum inlay Iron Ore
- Android infotainment system (9" touchscreen (22.9 cm diagonal) - Bluetooth hands-free system incl. audio streaming - Digital vehicle owner's manual - Digital radio reception (DAB+) - 2 USB-C ports (compatible with Apple iPod/iPhone/iPad))
- Automatic climate control with separate temperature control for driver and front passenger (and additional air vents for the 2nd row of seats (integrated in the B-pillar))
- Black roof rails (integrated)
- Chrome trim on the side windows
- Cruise control system (and variable speed limiter)
- Diesel particulate filter
- Drive Mode (driving mode settings for engine, transmission, steering, brakes and suspension: Comfort, Off Road)
- Electric windows front and rear (with auto-down and auto-up function)
- Electrically folding exterior mirrors
- Electronic Stability Control (ESC)
- Emergency brake lights (brake lights flash rapidly during heavy deceleration; hazard warning lights are automatically activated at speeds below 10 km/h)
- Fog light
- Fog sensor for automatic activation of the defroster function
- Google Services with navigation (navigation via Google Maps, Google Assistant, Google Play Store and unlimited data (includes data for map updates, app downloads and streaming services) for the first 4 years)
- Hill Descent Control (HDC)
- Interior and exterior mirrors automatically dimming
- Interior lighting (headliner, front reading lights, front ambient lighting, front footwell, storage compartment behind center console, glove compartment and luggage compartment)
- Keyless Start (electronic engine start system)
- On-board computer (with vehicle control functions)
- Passenger side airbag can be deactivated
- Phone: Inductive smartphone charging system (Wirelessly charges smartphones that support the Qi standard on a charging pad)
- Radio accessories: Digital radio reception (DAB+)
- Radio accessories: Two USB-C ports on the back of the center console
- Rear center armrest (foldable) (with cup holders)
- Rear seats in a 40/60 split or completely foldable with pass-through function
- Roof edge spoiler
- Airbag, side airbags for driver and front passenger and head/shoulder airbags (IC) for all occupants
- Automatic tailgate (electric)
- Cargo area roller blind
- Central locking with two remote controls and integrated emergency keys (automatic locking of doors while driving (can be deactivated) - comfort opening/closing of side windows and, if applicable, sunroof via remote control - panic function integrated into the remote control)
- Charging box under the cargo floor
- Child safety lock (rear doors)
- CleanZone air quality system with activated carbon filter (automatic recirculation and pre-ventilation of the interior when the vehicle is unlocked)
- Digital instrumentation 2nd generation (Full graphic 12.3" driver display (31.2 cm diagonal) with two variable round instruments and information display (e.g. for navigation map view))
- Driver and passenger side airbags with two-stage deployment system
- Electric parking brake
- Electrically adjustable and heated exterior mirrors, left and right
- Electronic differential lock
- First aid kit and warning triangle
- Front center armrest with integrated storage compartment and cup holders
- Front grille in waterfall design in high-gloss black
- Glazing: Colored glazing
- Headrests (5) front and rear
- Heated rear window
- Hill Start Assist (HSA)
- IDIS - Intelligent Driver Information System (delays incoming calls or vehicle information in potentially dangerous situations)
- Illuminated makeup mirror for driver and front passenger
- Immobiliser
- ISOFIX mounting for the outer rear seats
- Keyless Drive (electronic access system) with sensor-controlled tailgate, illuminated door handles and puddle lights
- Lashing eyes in the luggage compartment (foldable)
- LED headlights "Thor's Hammer" with high beam assist and integrated LED daytime running lights
- LED turn signals integrated into the exterior mirrors
- Luggage compartment partition net
- Outdoor temperature display
- Power outlet (12-volt connection in the luggage compartment)
- Preparation for Trailer Stability Assist (TSA)
- Radio: Audio system High Performance Sound (330 watts of power - 10 speakers)
- Rain sensor
- Rear headrests foldable (electrically)
- Rear parking assist with automatic braking intervention (rear)



- Run-off Road Protection (preventive protection system in case of unintentional leaving the road or impending rollovers including pre-activation of the seat belt tensioners, deactivation of the battery (plug-in hybrid only) and door unlocking)
- Safety braking system with disc brakes all around (internally ventilated) (automatic brake system pre-tensioning, brake assist and automatic hold function)
- Seat belts (active seat belts with belt tensioners, pre-activation of the belt tensioners only in conjunction with IntelliSafe Surround - belt height adjustment front - warning tone/indication when seat belts are not fastened (for all seats))
- Seats: Lumbar support (2-way adjustable) for driver and front passenger seats
- Speed-sensitive power steering
- Stainless steel loading sill protector in the luggage compartment
- Steering wheel adjustable for height and reach
- Steering wheel: Multifunction buttons on the steering wheel
- Volvo On Call (alerting the Volvo On Call service center at the touch of a button, as well as additional convenience services via the smartphone app, such as locking and unlocking the vehicle, direct start of pre-conditioning of the interior and retrieval of the high-voltage battery charge status)
- Safety Assistance (Automatic Emergency Braking System - Connected Safety - Driver Alert - Attention Warning - Distance Warning (only in conjunction with Head-up Display) - Variable Speed Limiter - Cruise Control - Lane Keeping Aid (LKA) - Active Lane Keeping Assist - Oncoming Lane Mitigation - Ready to Drive Notification - Road Edge Detection - Road Sign Information (RSI) - Traffic Sign Recognition (only in conjunction with Navigation))
- Seats: Driver and front passenger seats height adjustable (electrically) (including manual tilt adjustment)
- Start/Stop technology
- third brake light
- Tire pressure monitoring system (with tire-specific pressure loss warning)
- Transmission: 8-speed Geartronic automatic transmission
- Upholstery: Textile comfort seats
- Wheels: 18" 5-spoke alloy wheels (235/60 R18 tires with 7.5 x 18" rims)
- Wheels: Tire sealant (Incl. 12-volt compressor, maximum speed 80 km/h)
- WHIPS whiplash protection system (including immersion protection on all seats and energy-absorbing front seat cushions)

Extra equipment

- Engine designation, deletion
- Package: Parking Assistance Package (front and rear parking aid - reversing camera)
- Package: Winter Package (front seat heating - steering wheel heating)
- Paint finish: Metallic paint
- Towbar (semi-electric)
- Package: Lighting Package (LED fog lights (integrated into the front spoiler) - Headlight cleaning system - Full LED headlights "Thor's Hammer" Active High Beam with extended high beam, dynamic cornering lights, intelligent high beam assist with adaptive headlight range control and integrated LED daytime running lights - Ambient lighting Extended ambient lighting (multicolor) front/rear tailgate Exit lights front/rear Illuminated door pockets - openers front/rear Illuminated cup holders front Footwell lighting rear Reading lights)

Brief expert findings

Documents submitted	At the time of the inspection, the vehicle registration certificate Part 2 (title) was available, but the vehicle registration certificate Part 1 (document) was not. (Copy)
VIN comparison	The vehicle identification number (VIN) was read from the vehicle and its conformity with the submitted documents was confirmed by the undersigned during the inspection.
Inspection	The inspection conditions were sufficient for the assessment of the vehicle. Lifting equipment and/or a pit were available for examining the vehicle.
Test drive	No test drive/shunting maneuver was carried out during the inspection of the vehicle.
Engine function test	An engine test run was performed.



Value reducing factors

No.	Component group	Description
1	Equipment	Tirefit filler - Expired - Replace
2	Boot lid / rear door	Boot lid - Glued / labelled - De-glue / neutralise
3	Engine	Engine cover - top / cover - Damage caused by marten / rodent - Replace
4	Front bumper	Front bumper - Scratch(es) - Smart repair
5	Bonnet	Insulation lining - Damage caused by marten / rodent - Replace
6	Door - rear left side	Door - Dent / paintcoat damage - Paint

Wear and tear

No.	Component group	Description
1	Rear bumper	Rear bumper - Scratch(es) - No deduction
2	Bonnet	Bonnet (Steinschlag) - dent(s) - No deduction

The vehicle shows signs of wear and tear commensurate with its age and use.

Order/Scope of Order

An order was placed to prepare a sales report for the described vehicle. This report includes the following:

- Description of key vehicle information
- Documentation of equipment features
(*Delivery by third-party service providers*)
- Documentation of damage, defects, missing parts
- Documentation of prior damage, unrepaired prior damage, repainting
- A brief visual or functional inspection of the equipment details, if possible.
(*Functional testing of driver assistance systems is not included in the scope of services!*)
- a photographic documentation of the vehicle

Basis for the order

This product is based on the guidelines for vehicle returns and valuations published by Alphabet Fleet GmbH. The expert makes the specific findings in each individual case objectively, within the framework of the prescribed standards, based on their own expertise.

The vehicle inspection takes place in a fully assembled, unassembled state.

Damage or defects that can only be detected during disassembly/diagnostic work or through further investigation remain within the realm of prognostic risk. An increased risk exists due to concealed defects caused by fraudulent misrepresentation and which were not identifiable by the expert.

Damage or defects resulting from normal use or wear and tear of the vehicle will be accepted in accordance with the applicable standard.

There was no explicit identification or monetary consideration of the expected features within the product.

Features which, in their nature and extent, slightly exceed normal use but do not constitute unacceptable damage, will be documented and indicated as signs of wear, if applicable.

Damage or defects that, according to the applicable standard, can no longer be attributed to normal use or wear and tear are listed under "Value Reducing Factors" in the product description.

Depending on the product specification, a monetary ID can be provided. If this takes place, the costs can be 100% d or pro rata depending on the vehicle's age and mileage.

Previous damages

No apparent prior damage that had been repaired could be found on the vehicle.



Comments

- Der beiliegende Winterradsatz ist kein Bestandteil des Auslieferungsumfangs.



Figure 1: Diagonal front (left)



Figure 2: Diagonal front (right)



Figure 3: Diagonal rear (left)



Figure 4: Diagonal rear (right)



Figure 5: Interior - front



Figure 6: Interior - rear

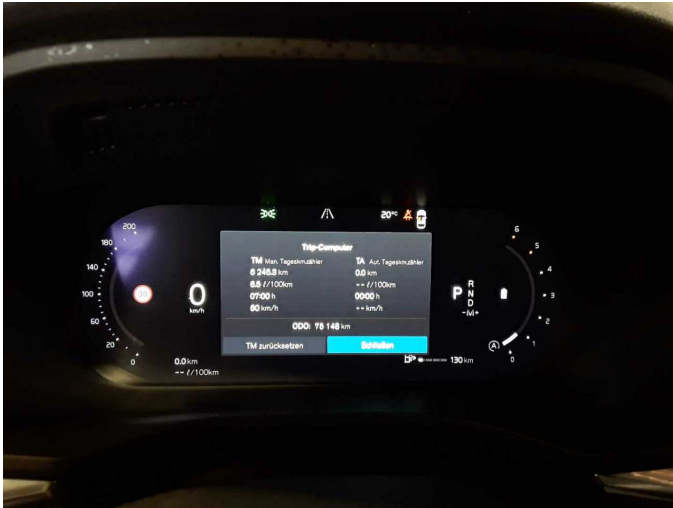


Figure 7: Instrument cluster



Figure 8: Instrument panel



Figure 9: Interior 360° view



Figure 10: Cargo area



Figure 11: VIN



Figure 12: Mounted tyres



Figure 13: Documents



Figure 14: Documents



Figure 15: Documents



Figure 16: Additional tyres

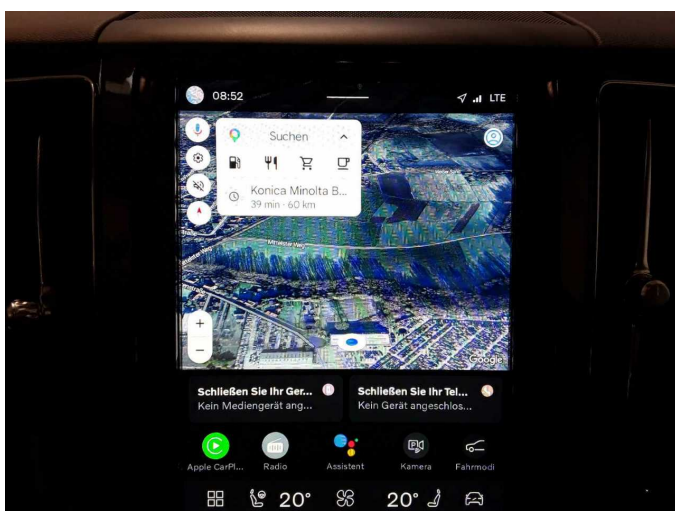


Figure 17: Navigation



Figure 18: Misc.



Figure 19: Misc.



Figure 20: Misc.



Figure 21: Misc.

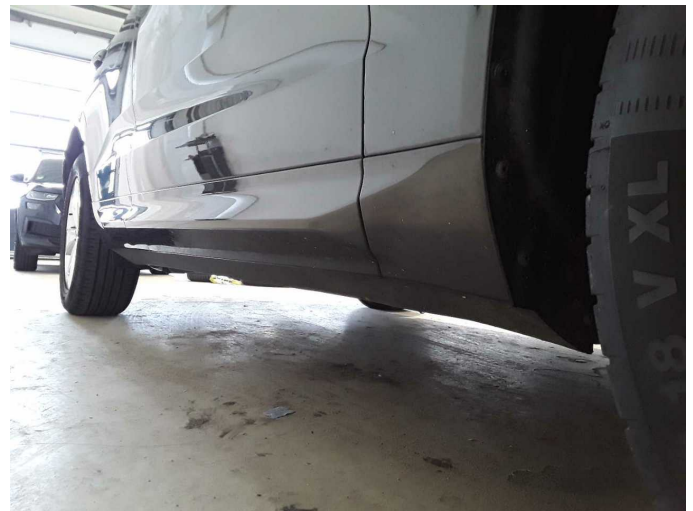


Figure 22: Misc.

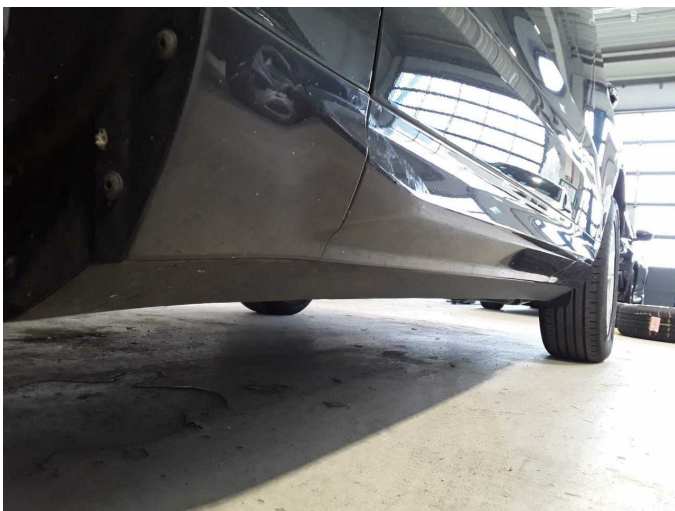


Figure 23: Misc.



Figure 24: Misc.



Figure 25: Misc.



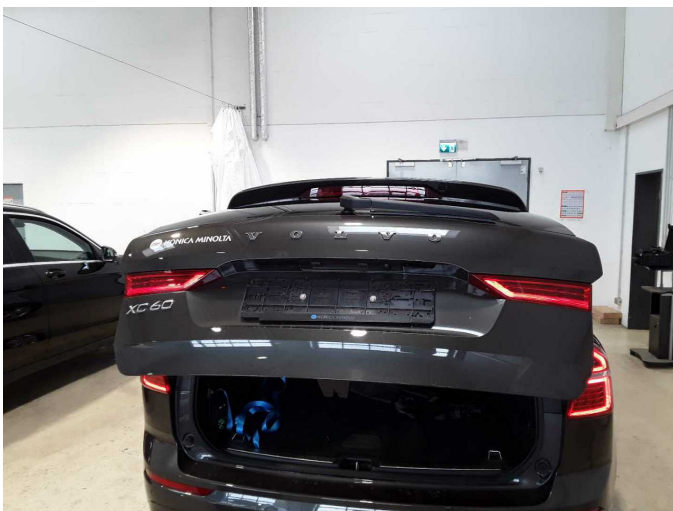
Figure 26: Misc.



Figure 27: Misc.



Damage 1: Equipment: Tirefit filler - Expired - Replace



Damage 2: Boot lid / rear door: Boot lid - Glued / labelled - De-glu / neutralise



Damage 2: Boot lid / rear door: Boot lid - Glued / labelled - De-glu / neutralise



Damage 3: Engine: Engine cover - top / cover - Damage caused by marten / rodent - Replace



Damage 4: Front bumper: Front bumper - Scratch(es) - Smart repair



Damage 4: Front bumper: Front bumper - Scratch(es) - Smart repair



Damage 5: Bonnet: Insulation lining - Damage caused by marten / rodent - Replace



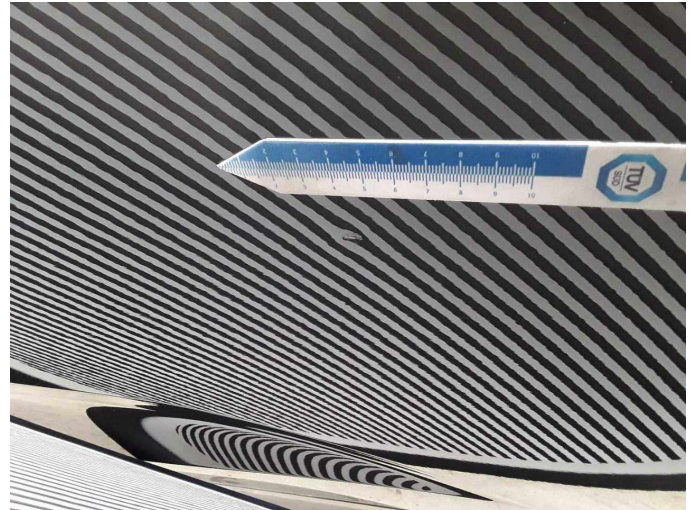
Damage 5: Bonnet: Insulation lining - Damage caused by marten / rodent - Replace



Damage 6: Door - rear left side: Door - Dent / paintcoat damage - Paint



Damage 6: Door - rear left side: Door - Dent / paintcoat damage - Paint



Damage 6: Door - rear left side: Door - Dent / paintcoat damage - Paint