

Expertise

Protocol number: 46103055
Order No. / Reference: 26546880
Inspection date: 23 Jun 2026

Manufacturer: MAN

Model: TGE 3.140 4X2F SB

VIN: WMA03VUY2P9023339



Vehicle details

Manufacturer / Type / Model / Equipment

MAN TGE 3.140 4X2F SB

Vehicle Identification number WMA03VUY2P9023339

Mileage (Read) 67,529 km

First registration 17 Jul 2023

Number of holders 1

Next periodical technical inspection 07/2027
(Report on hand)

Power / Engine displacement 103 kw / 1,968 ccm

Fuel type / Cylinder Diesel / 4

Gearbox / Number of gears Manual / 6

Type of drive Front drive

Type of vehicle Van

Colour / colour code Candy weiß

Doors / Seats 4 / 2

Upholstery type Cloth

Colour of upholstery Grey-Black

Re-import no

readiness to drive Roadworthy



Vehicle details

Maintenance booklet / proof	digital evidence / incomplete	Next maintenance in	79 Tag(e)
Last service on / at	07/2025 at 62,909 km		
Key is / should be	2 / 2	FZG documents	ZB#2 (B) was available (copy), ZB#1 (S) was not available.
		Letter No.	GW447341
Previous damage / Accident	None detectable	Repainting	Detectable
Inspection conditions	sufficient	Lifting equipment / pit	yes
Test drive	Not performed	Engine function test	Performed
readiness to drive	Roadworthy		
Manufacturer key number/ type code number	1516 / AYN 61613		
Emission standard	EURO6;WLTP;AR;PI/CI;N1 III, N2	fine dust sticker	
Permitted total weight	3,500 kg	Empty weight	

Tyres

Mounted tyres

#	Tyre size	Type of tyre	Manufacturer	Tread depth
1)	205/75 R16 113R	All-season tyres on Steel rim with wheel cover	Vredestein	4mm / 4mm
2)	205/75 R16 113R	All-season tyres on Steel rim with wheel cover	Continental	6mm / 6mm

Replacement

Typ	Tyre size	Type of tyre	Manufacturer	Tread depth
E	205/75 R16 113R C	All-season tyres on Steel	Continental	9 mm

Legend: Tread depth information for the left tire is listed first, for the right tire it is listed second on the axle in the direction of travel.

Equipment

Retrofitted equipment

- Airbag for driver and front passenger with passenger
- C-rails on the side walls in the loading area
- All-season tyres
- MAN Media Van package with 4 speakers
- Center wheel cover with chrome emblem
- Spare wheel in driving tire size, steel as well as
- Side interior paneling in the cargo area (plastic)
- 'Comfort' seat on the left, in the 1st row.
- Battery with increased capacity
- Cab doors, additionally reinforced
- Wooden floor in the cargo area with wheel arch trim
- National registration documentation (German)
- Smoker's version: 12V socket with cigarette lighter
- Rearview camera
- Single airline points sliding door
- Rear step, across the entire width



Brief expert findings

Documents submitted	At the time of the inspection, the vehicle registration certificate Part 2 (title) was available, but the vehicle registration certificate Part 1 (document) was not. (Copy)
VIN comparison	The vehicle identification number (VIN) was read from the vehicle and its conformity with the submitted documents was confirmed by the undersigned during the inspection.
Inspection	The inspection conditions were sufficient for the assessment of the vehicle. Lifting equipment and/or a pit were available for examining the vehicle.
Test drive	No test drive/shunting maneuver was carried out during the inspection of the vehicle.
Engine function test	An engine test run was performed.
readiness to drive	The vehicle was roadworthy at the time of inspection.

Value reducing factors

No.	Component group	Description
1	Wheel / tyres	Tyre - front - Does not meet the leasing specifications - Replace

Repainting

No.	Repainting
1	Boot lid / rear door, Side panel - rear right side, Door - front left side, Professionally carried out

Paint coat thickness measurement

Boot lid / rear door	170 µm	Side panel - rear right side	272 µm
Door - front left side	146 µm		

Order/Scope of Order

An order was placed to prepare a sales report for the described vehicle. This report includes the following:

- Description of key vehicle information
- Documentation of equipment features
(*Delivery by third-party service providers*)
- Documentation of damage, defects, missing parts
- Documentation of prior damage, unrepaired prior damage, repainting
- A brief visual or functional inspection of the equipment details, if possible.
(*Functional testing of driver assistance systems is not included in the scope of services!*)
- a photographic documentation of the vehicle



Basis for the order

This product is based on the guidelines for vehicle returns and valuations of light commercial vehicles published by Alphabet Fleet Management GmbH. The expert makes the specific findings in each individual case objectively, within the framework of the prescribed standards, based on their own expertise.

The vehicle inspection takes place in a fully assembled, unassembled state.

Damage or defects that can only be detected during disassembly/diagnostic work or through further investigation remain within the realm of prognostic risk. An increased risk exists due to concealed defects caused by fraudulent misrepresentation and which were not identifiable by the expert.

Damage or defects resulting from normal use or wear and tear of the vehicle will be accepted in accordance with the applicable standard.

There was no explicit identification or monetary consideration of the expected features within the product.

Features which, in their nature and extent, slightly exceed normal use but do not constitute unacceptable damage, will be documented and indicated as signs of wear, if applicable.

Damage or defects that, according to the applicable standard, can no longer be attributed to normal use or wear and tear are listed under "Value Reducing Factors" in the product description.

Depending on the product specification, a monetary ID can be provided. If this takes place, the costs can be 100% d or pro rata depending on the vehicle's age and mileage.

Previous damages

No apparent prior damage that had been repaired could be found on the vehicle.



Figure 1: Diagonal front (left)



Figure 2: Diagonal front (right)



Figure 3: Diagonal rear (left)



Figure 4: Diagonal rear (right)

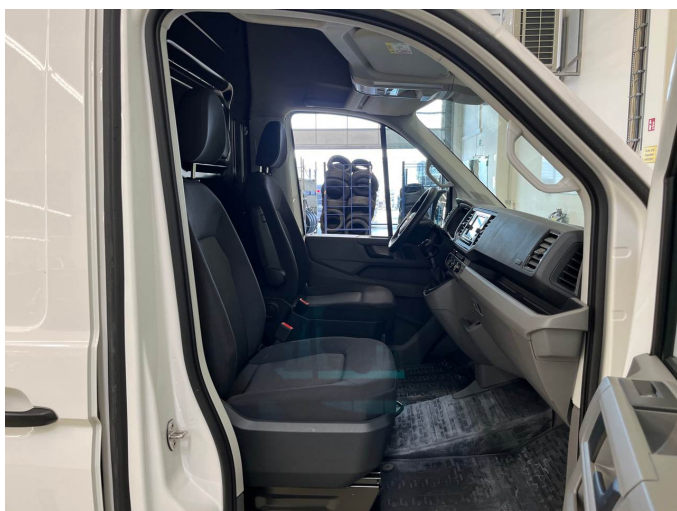


Figure 5: Interior - front



Figure 6: Interior - rear



Figure 7: Instrument cluster



Figure 8: Instrument panel



Figure 9: Interior 360° view



Figure 10: Cargo area



Figure 11: VIN



Figure 12: Mounted tyres



Figure 13: Documents



Figure 14: Documents

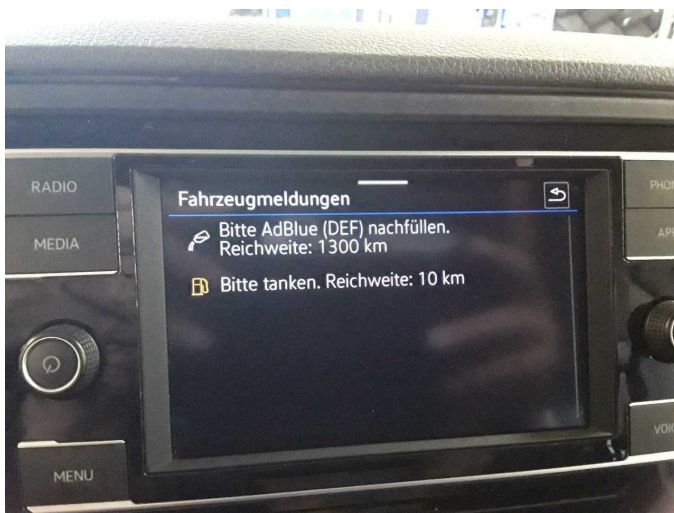


Figure 15: Documents



Figure 16: Documents

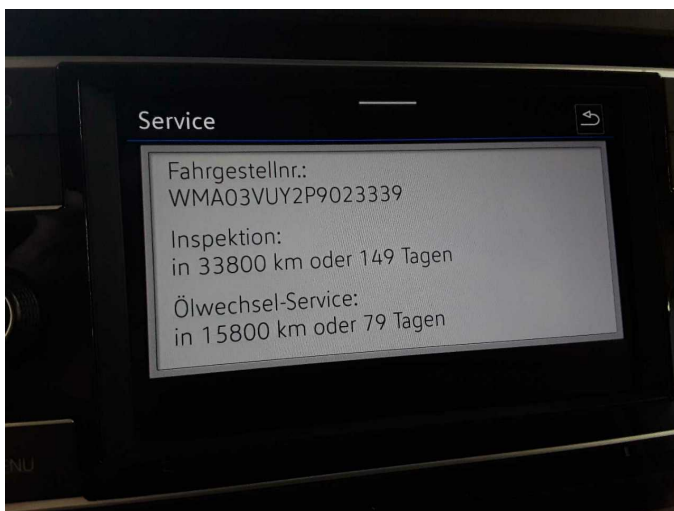


Figure 17: Documents



Figure 18: Documents



Figure 19: Misc.



Figure 20: Misc.



Figure 21: Misc.



Figure 22: Misc.



Figure 23: Misc.



Figure 24: Misc.



Figure 25: Misc.



Figure 26: Misc.

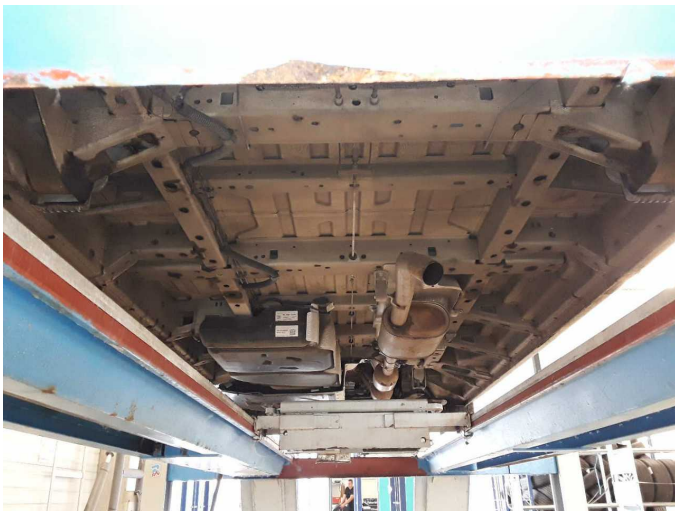
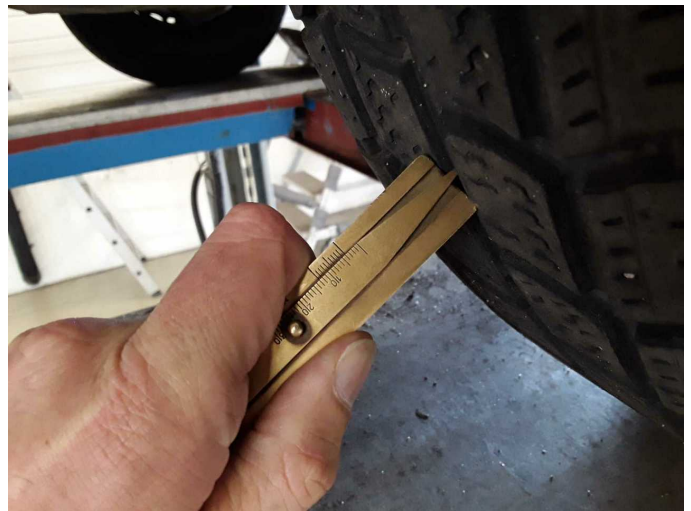


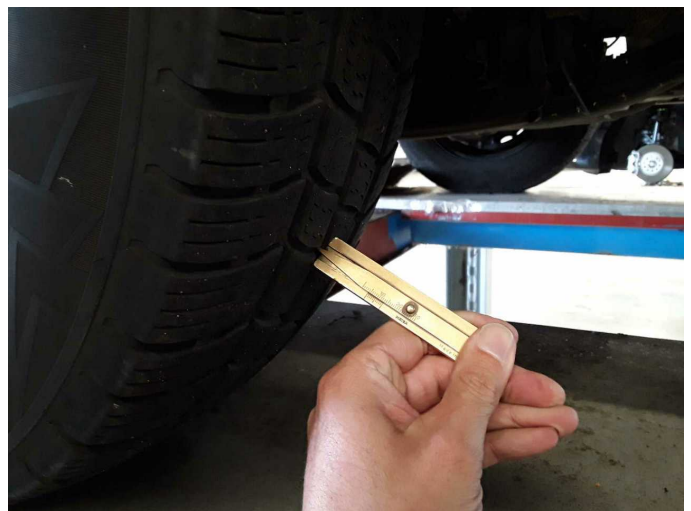
Figure 27: Misc.



Damage 1: Wheel / tyres: Tyre - front - Does not meet the leasing specifications - Replace



Damage 1: Wheel / tyres: Tyre - front - Does not meet the leasing specifications - Replace



Damage 1: Wheel / tyres: Tyre - front - Does not meet the leasing specifications - Replace



Damage 1: Wheel / tyres: Tyre - front - Does not meet the leasing specifications - Replace



Boot lid / rear door: 170 µm



Boot lid / rear door: 170 µm



Boot lid / rear door: 170 µm



Boot lid / rear door: 170 µm



Side panel - rear right side: 272 µm



Side panel - rear right side: 272 µm



Door - front left side: 146 µm



Door - front left side: 146 µm



Door - front left side: 146 µm



Wartungshistorie

(gemäß Auftraggeber Informationen)

Fahrgestellnummer: WMA03VUY2P9023339

Hersteller / Modell: MAN MAN TGE 3.140 4X2F SB

Datum	KM-Stand	Beschreibung
15.07.2025	62.909	Bremsentest; HU + AU; Systemtest/Eigendiagnose; Wartung Sonstiges
04.12.2024	51.317	Reparatur Sonstiges