

Expertise

Protocol number: 46168770
Order No. / Reference: 26508941
Inspection date: 24 Jun 2026

Manufacturer: Volkswagen

Model: Caddy 2.0 TDI Trendline

VIN: WV1ZZZ2KZLX142227



Vehicle details

Manufacturer / Type / Model / Equipment

Volkswagen Caddy 2.0 TDI Trendline

Vehicle Identification number WV1ZZZ2KZLX142227

Mileage (Read) 65,129 km

First registration 18 Sept 2020

Number of holders 1

Power / Engine displacement 75 kw / 1,968 ccm

Fuel type / Cylinder Diesel / 4

Gearbox / Number of gears Manual / 6

Type of drive Front drive

Type of vehicle Van

Colour / colour code Reflexsilber metallic
(A7W)

Doors / Seats 4 / 2

Upholstery type Cloth

Colour of upholstery Black-Grey



Vehicle details

Maintenance booklet / proof	digital proof / complete	Next maintenance in	6,300 km
Last service on / at	06/2023 at 59,763 km		
Key is / should be	2 / 2	FZG documents	ZB#2 (B) was available (copy), ZB#1 (S) was not available.
		Letter No.	FU632990
Previous damage / Accident	Detectable	Repainting	None detectable
Inspection conditions	sufficient	Lifting equipment / pit	yes
Test drive	Not performed	Engine function test	Performed
Manufacturer key number/ type code number	0603 / BXG 21881		
Emission standard	EURO6;WLTP;CH;PI/CI; N1 II	fine dust sticker	
Permitted total weight	2,161 kg	Empty weight	

Tyres

Mounted tyres

#	Tyre size	Type of tyre	Manufacturer	Tread depth
1)	195/65 R15 91T	Winter tyres on Steel	Continental	5mm / 4mm
2)	195/65 R15 91T	Winter tyres on Steel	Continental	4mm / 5mm

Additional tyres

#	Tyre size	Type of tyre	Manufacturer	Tread depth
1)	195/65 R15 91H	Summer tyres on Steel	Continental	6mm / 6mm
2)	195/65 R15 91H	Summer tyres on Steel	Continental	5 mm
	195/65 R15 88T	Winter tyres on Steel	Goodyear	1 mm

Legend: Tread depth information for the left tire is listed first, for the right tire it is listed second on the axle in the direction of travel.



Equipment

Standard equipment

- Storage compartments and boxes (storage compartment under the front seats)
- Airbag: Driver and front passenger side (with deactivation option for the front passenger airbag)
- Electrically adjustable and heated exterior mirrors
- Hill start assist (with ASR button for vehicles with start-stop system)
- third brake light
- Roof rail/roof rack preparation
- Three-point automatic seat belts (with belt height adjustment and belt tensioners for driver and front passenger)
- Power windows with comfort operation (safety shut-off)
- Halogen twin headlights with LED daytime running lights
- Interior lighting: in the driver's cab (with an LED light in the glove compartment)
- Multi-collision brake
- Particulate filter: Diesel particulate filter (incl. SCR and AdBlue tank)
- Wheel cover center
- Wheels/Tires: Steel wheels 6J x 15
- Sliding door, on the right in the passenger/cargo area
- Lettering on the rear (lettering for type and engine designation)
- Seat belt monitoring system (warning buzzer and light when front seat belts are not fastened)
- Seats: Right-hand seat in the driver's cab (right-hand seat in the driver's cab, seat base with storage compartment preparation)
- Start-stop system (with brake energy recuperation)
- Bumper in grey
- Tire Mobility Set (12-volt compressor, tire sealant and jack)
- First aid kit, warning triangle and high-visibility vest
- Electronic immobilizer
- Central locking with remote control and interior operation
- Storage compartments: Lockable glove compartment lid with light
- Airbag: Front side airbags, with head airbags, for driver and front passenger
- Exterior mirrors: Car exterior mirrors, left aspherical, right convex
- Floor coverings, carpet covering in the driver's cab (carpet covering in the driver's cab)
- Tachometer
- ESP Electronic Stability Program with Brake Assist (incl. Anti-lock Braking System (ABS), Traction Control (ASR), (EDS and MSR))
- Transmission: 5-speed transmission
- Tailgate covered with sheet metal
- Headrests (2), height adjustable
- Steering column adjustable in height and tilt
- Non-smoking version (12V socket and cup holder in the dashboard)
- Upholstery: Cloth
- Wheels/Tires: 195/65 R 15 91 T rolling resistance optimized
- Keys for locking system: 1 remote control flip key, 1 fixed key
- Speed-sensitive power steering (Servotronic)
- Seat: height-adjustable driver's seat
- Seats 1st row: LW support (manually adjustable) for single seat in the driver's cab, left.
- Right-hand sun visor without makeup mirror and including airbag label
- Dust and pollen filter
- Daytime running light
- Partition walls: High partition wall without windows
- Lashing eyes (6 pieces in the passenger compartment)
- thermal insulation glazing



Extra equipment

- Adaptive Cruise Control (ACC) up to 160 km/h, including speed limiter
- Air conditioning "Air Care Climatronic" (2-zone) with truck approval (allergen filter - heated rear window - illuminated glove compartment with lockable flap - rear window wiper/washer system with interval function - "Air Care Climatronic" air conditioning with 2-zone temperature control and air purification function)
- Driver assistance systems: Front Assist area monitoring system with City Emergency Braking function
- Fatigue detection and multifunction display "Plus"
- Fog light
- Package: Cool & Find package for Caddy with commercial vehicle registration (USB interface (also iPod/iPhone/iPad compatible) - AUX-IN multimedia socket - Allergen filter - Heated rear window - Illuminated glove compartment with lockable flap - Discover Media navigation system (integrated data carrier) - Radio navigation system - Rear window wiper/washer system with intermittent function - 4 speakers - Air Care Climatronic air conditioning - LED interior lighting in the driver's cab - Mobile phone interface)
- Seat heating (heated driver's seat)
- Winter package Caddy 2 (Seat heating for seats in the driver's cab, left and right, separately adjustable - Auxiliary water heater with timer - Heated windshield washer nozzles at the front)
- Car-Net "Guide & Inform", 3-year term
- Exterior mirrors, electrically adjustable, heated and folding
- Floor coverings: Universal wood flooring
- Interior roof lining in the driver's cab as a comfort headliner
- Light and Sight Package (automatically dimming interior safety mirror - automatic headlight control with daytime running lights, "Leaving home" function and manual "Coming home" function - intermittent windshield wiper control with rain sensor)
- Locking system: 2 remote control keys for the central locking system.
- Paint finish: Metallic
- ParkPilot in the rear area
- Partition walls: Partition wall (high) with window (dimnable safety interior mirror)
- Radio: Digital radio reception (DAB+)
- Rear wing door (asymmetrically divided) with window cutout
- Seats, 1st row: Lumbar support, left and right, manually adjustable.
- Smoker's version (12V socket with cigarette lighter and ashtray)
- Steering wheel: Multifunction leather steering wheel (3 spokes) (Leather trim: handbrake lever and gearshift knob in leather)

Brief expert findings

Documents submitted	At the time of the inspection, the vehicle registration certificate Part 2 (title) was available, but the vehicle registration certificate Part 1 (document) was not. (Copy)
VIN comparison	The vehicle identification number (VIN) was read from the vehicle and its conformity with the submitted documents was confirmed by the undersigned during the inspection.
Inspection	The inspection conditions were sufficient for the assessment of the vehicle. Lifting equipment and/or a pit were available for examining the vehicle.
Test drive	No test drive/shunting maneuver was carried out during the inspection of the vehicle.
Engine function test	An engine test run was performed.

Value reducing factors

No.	Component group	Description
1	Door - front right side	Door - dent(s) - Smooth repair work
2	Tail light	Auxiliary brake light - Broken / torn - Replace
3	Sill - right side	Sill - Scratch(es) - Smart repair
4	Mudguard - left side	Mudguard - left side - Dent / paintcoat damage - Smart repair
5	Boot lid / rear door	Rear door - right side - Scratch(es) - Smart repair
6	Boot lid / rear door	Rear door - left side - Scratch(es) - Smart repair
7	Body	Body - Glued / labelled - De-glue / neutralise
8	2nd wheel set	1 tyre - Worn - Replace
9	Bonnet	Bonnet - Deformed - Repair and paint
10	Roof	Roof - Corrosion - Repair and paint



Wear and tear

No.	Component group	Description
1	Interior	Interior - Differs from the original configuration - No deduction
2	Wheel / tyres	Tyres - complete set (Über 4mm) - No deduction
3	Front bumper	Front bumper - Stone chips - No deduction
4	Door - front right side	Door handle - outside - Scratch(es) - Cover / polish

The vehicle shows signs of wear and tear commensurate with its age and use.

Missing parts

Description

Equipment - Tirefit complete

Previous damages

No.	Previous damage	Extent of damage (Net)
1	Front, Provided by user / customer, from 18 Jun 2023	1.710,82 €

Accident damages

No. Accident

1 Rear, Side right

Order/Scope of Order

An order was placed to prepare a sales report for the described vehicle. This report includes the following:

- Description of key vehicle information
- Documentation of equipment features
(*Delivery by third-party service providers*)
- Documentation of damage, defects, missing parts
- Documentation of prior damage, unrepaired prior damage, repainting
- A brief visual or functional inspection of the equipment details, if possible.
(*Functional testing of driver assistance systems is not included in the scope of services!*)
- a photographic documentation of the vehicle



Basis for the order

This product is based on the guidelines for vehicle returns and valuations published by Alphabet Fleet GmbH. The expert makes the specific findings in each individual case objectively, within the framework of the prescribed standards, based on their own expertise.

The vehicle inspection takes place in a fully assembled, unassembled state.

Damage or defects that can only be detected during disassembly/diagnostic work or through further investigation remain within the realm of prognostic risk. An increased risk exists due to concealed defects caused by fraudulent misrepresentation and which were not identifiable by the expert.

Damage or defects resulting from normal use or wear and tear of the vehicle will be accepted in accordance with the applicable standard.

There was no explicit identification or monetary consideration of the expected features within the product.

Features which, in their nature and extent, slightly exceed normal use but do not constitute unacceptable damage, will be documented and indicated as signs of wear, if applicable.

Damage or defects that, according to the applicable standard, can no longer be attributed to normal use or wear and tear are listed under "Value Reducing Factors" in the product description.

Depending on the product specification, a monetary ID can be provided. If this takes place, the costs can be 100% or pro rata depending on the vehicle's age and mileage.

Previous damages

Non-repaired previous damages were found at the vehicle. The necessary repair costs are listed in the expert report or if necessary, are listed in detail in a separately enclosed repair cost calculation.

Comments

Die beigefügte Reparaturkostenkalkulation wurde nach bestem Wissen und Gewissen unter eingeschränkter Besichtigungsbedingung im demontagefreien Zustand erstellt. Es können aufgrund verdeckter Beschädigung erhebliche Mehrkosten und somit Abweichung der für den Unfall ausgewiesenen Reparaturkosten nicht ausgeschlossen werden.



Figure 1: Diagonal front (left)



Figure 2: Diagonal front (right)



Figure 3: Diagonal rear (left)



Figure 4: Diagonal rear (right)



Figure 5: Interior - front



Figure 6: Interior - rear



Figure 13: Documents



Figure 14: Additional tyres



Figure 15: Additional tyres



Figure 16: Navigation



Figure 17: Misc.



Figure 18: Misc.



Figure 19: Misc.



Figure 20: Misc.



Figure 21: Misc.



Figure 22: Misc.

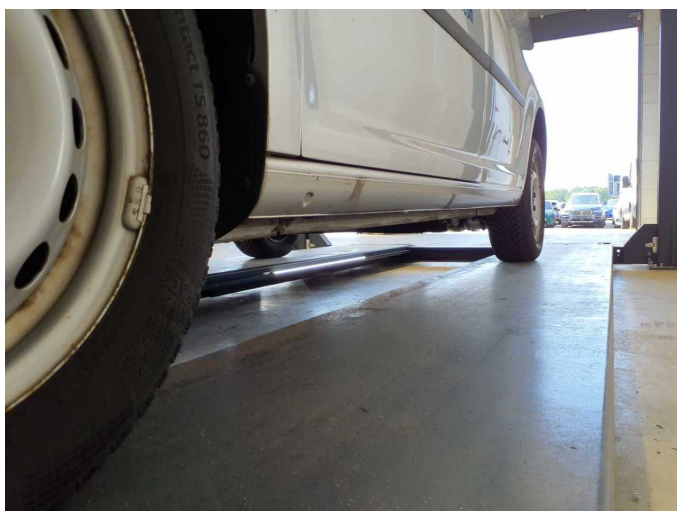


Figure 23: Misc.

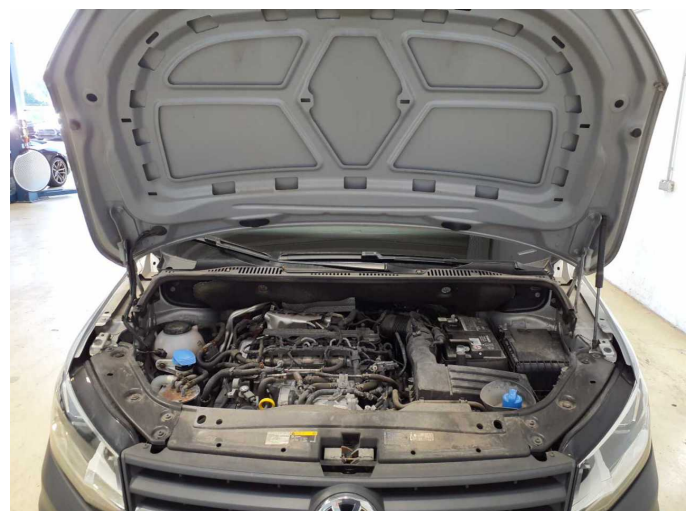


Figure 24: Misc.



Figure 25: Misc.



Figure 26: Misc.



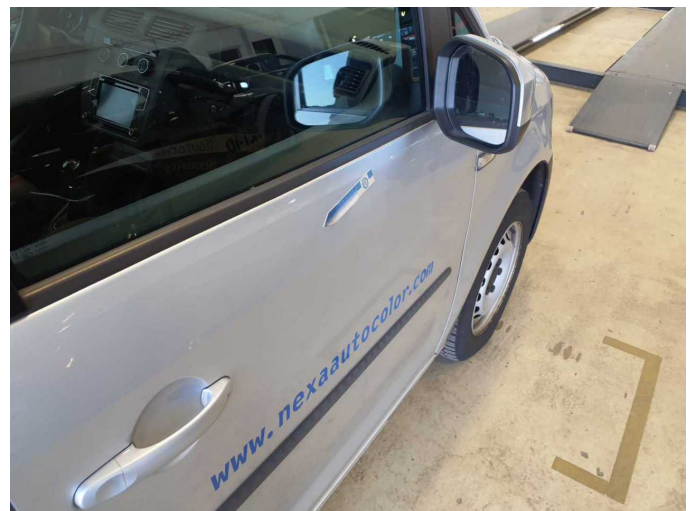
Figure 27: Misc.



Figure 28: Misc.



Figure 29: Misc.



Damage 1: Door - front right side: Door - dent(s) - Smooth repair work



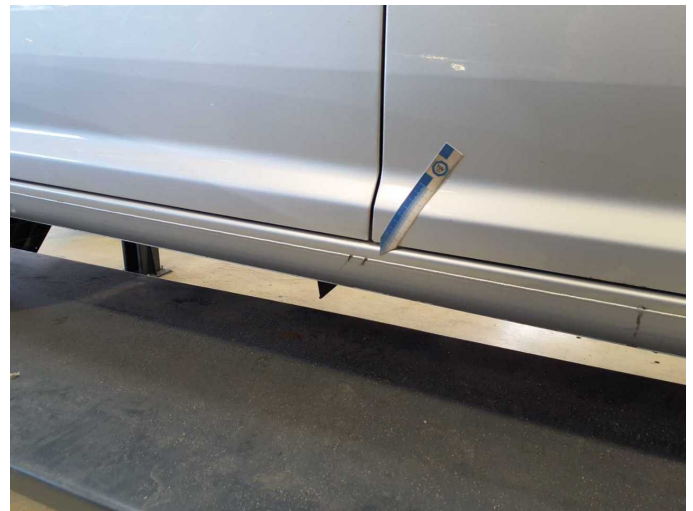
Damage 1: Door - front right side: Door - dent(s) - Smooth repair work



Damage 2: Tail light: Auxiliary brake light - Broken / torn - Replace



Damage 2: Tail light: Auxiliary brake light - Broken / torn - Replace



Damage 3: Sill - right side: Sill - Scratch(es) - Smart repair



Damage 3: Sill - right side: Sill - Scratch(es) - Smart repair



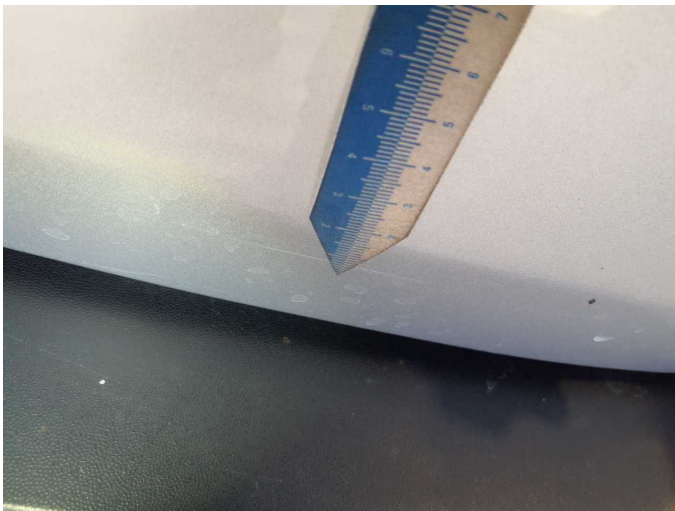
Damage 4: Mudguard - left side: Mudguard - left side - Dent / paintcoat damage - Smart repair



Damage 4: Mudguard - left side: Mudguard - left side - Dent / paintcoat damage - Smart repair



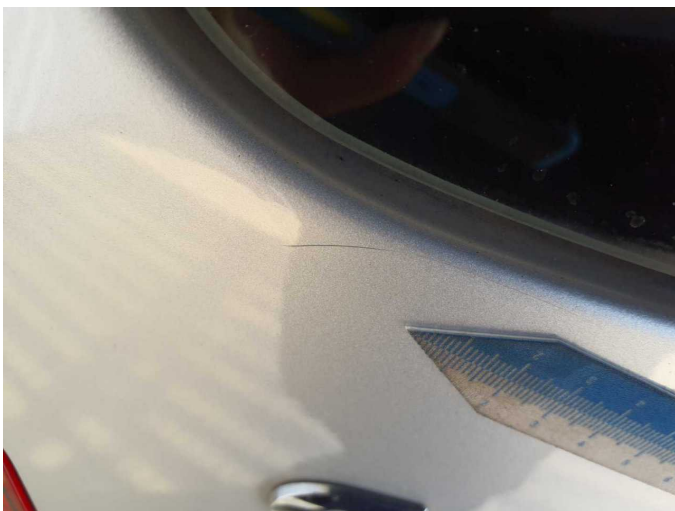
Damage 5: Boot lid / rear door: Rear door - right side - Scratch(es) - Smart repair



Damage 5: Boot lid / rear door: Rear door - right side - Scratch(es) - Smart repair



Damage 6: Boot lid / rear door: Rear door - left side - Scratch(es) - Smart repair



Damage 6: Boot lid / rear door: Rear door - left side - Scratch(es) - Smart repair



Damage 7: Body: Body - Glued / labelled - De-glude / neutralise



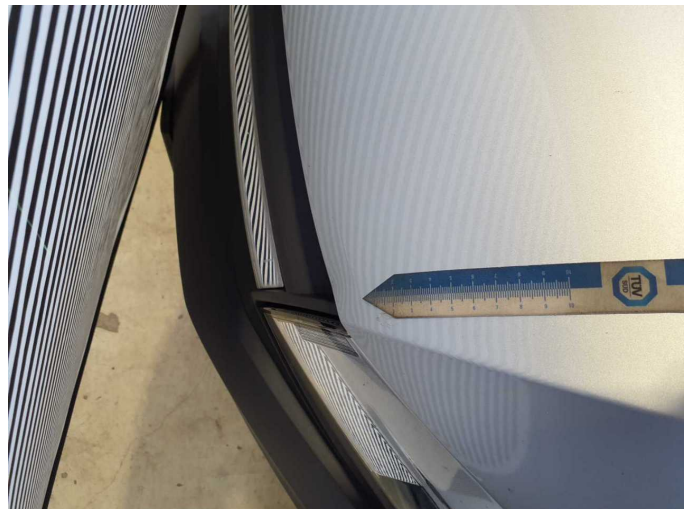
Damage 7: Body: Body - Glued / labelled - De-glue / neutralise



Damage 8: 2nd wheel set: 1 tyre - Worn - Replace



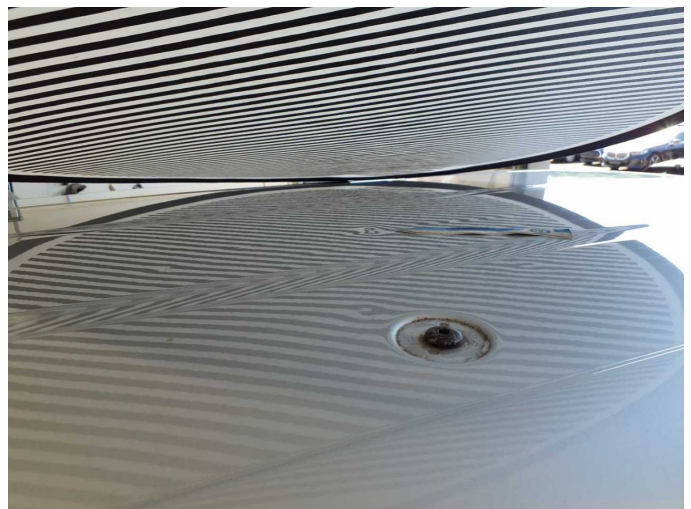
Damage 9: Bonnet: Bonnet - Deformed - Repair and paint



Damage 9: Bonnet: Bonnet - Deformed - Repair and paint



Damage 10: Roof: Roof - Corrosion - Repair and paint



Damage 10: Roof: Roof - Corrosion - Repair and paint



Damage 10: Roof: Roof - Corrosion - Repair and paint



Damage 10: Roof: Roof - Corrosion - Repair and paint



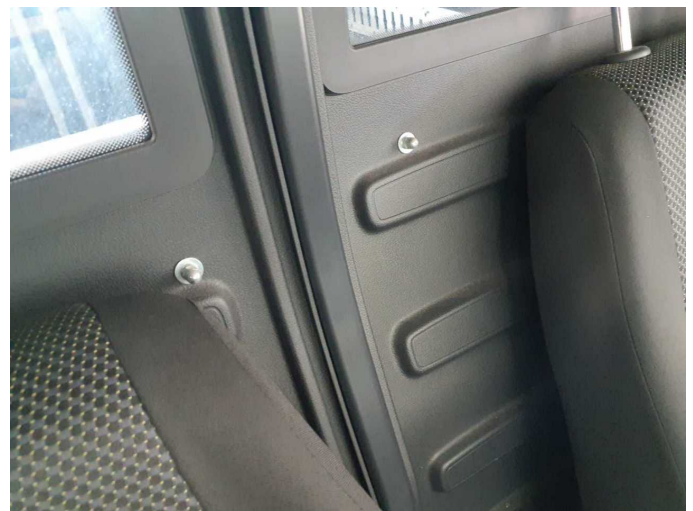
Damage 10: Roof: Roof - Corrosion - Repair and paint



Wear and tear 1: Interior: Interior - Differs from the original configuration - No deduction



Wear and tear 1: Interior: Interior - Differs from the original configuration - No deduction



Wear and tear 1: Interior: Interior - Differs from the original configuration - No deduction



Wear and tear 4: Door - front right side: Door handle - outside - Scratch(es) - Cover / polish



Wear and tear 4: Door - front right side: Door handle - outside - Scratch(es) - Cover / polish



Accident 1: Rear, Side right



Accident 1: Rear, Side right



Accident 1: Rear, Side right



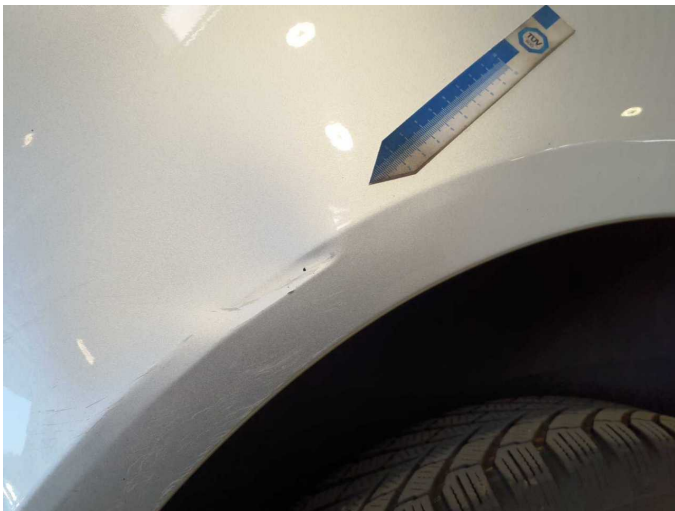
Accident 1: Rear, Side right



Accident 1: Rear, Side right



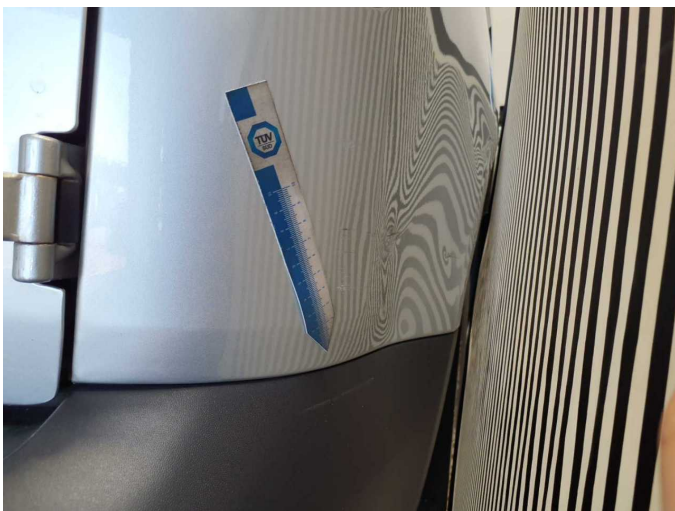
Accident 1: Rear, Side right



Accident 1: Rear, Side right



Accident 1: Rear, Side right



Accident 1: Rear, Side right



Accident 1: Rear, Side right