



Assessment

- Vehicle Inspection Report -

Number: 10326619
From: 30.03.2026

» Overview

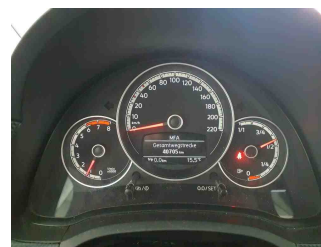
Order number: 1002380233
Order completed: 30.03.2026 11:47
Report number: 10326619
VIN: WVVZZZAAZND015158



Front Left 3/4



Rear Right 3/4



Mileage



Assessment

- Vehicle Inspection Report -

Number: 10326619
From: 30.03.2026

» Vehicle Data

Vehicle category:	Passenger Car
Vehicle type:	SmallCar
Make:	Volkswagen
Model:	up!
Manufacturers and type code:	0603 / CMX
Date of first registration:	27.01.2022
Mileage:	40,705 km
Proof of mileage:	ReadOff
Exterior colour:	Tungsten Silver Metallic
Roof colour:	Tungsten Silver Metallic
Propulsion:	Front
Fuel:	Petrol
Engine size (cc):	999 ccm
Performance:	48 kW (66 PS)
Length:	
Height:	
Width:	
Permitted total weight:	
Wheelbase:	
Number of powered axles:	2
Cylinders:	3
Euronorm:	Euro 6
Number of doors:	2
Number of seats:	4
Gearbox:	Manual 5-speed
Upholstery type:	Lining fabrics
Interior colour:	Ceramique-Titanschwarz/Titanschwarz/ Schwarz/Perlgrau
Number of keys:	2

» Documents & Maintenance

Statutory inspection date:	
Registration certificate available:	No
Registration certificate received:	No
License plate:	None
Maintenance book:	Digital
Maintenance:	Not testable
Maintenance last date:	
Maintenance last mileage:	
Remainder until next maintenance:	10,300 KM



Assessment

- Vehicle Inspection Report -

Number: 10326619
From: 30.03.2026

2 doors	Exterior mirrors, electrically adjustable and heated
2 head restraints in rear, lowerable	First aid kit, warning triangle and safety vest
2 remote control folding keys	Front fog lamps and cornering light
2 speakers	Front license plate carrier (large)
3-cylinder SI engine 1.0 l	Front stabilizer bar
3-cylinder SI engine 1.0 l, 48 kW	Fuel system for fuel-injected SI engine
3-point seat belts for the outer rear seats	Gearshift knob with glossy black/white lens
4 steel wheels 5J x 14	Glove compartment with lid
5-speed manual transmission	Green heat-insulating glass
Acoustics package "Standard"	Halogen headlamps and turn signals under one clear lens with LED separate daytime running light
Activated carbon canister (Evaporative Emission Control System (EVAP))	Hatchback
Air conditioning system Climatronic	Heated front seats
Air conditioning system Climatronic with enhanced air filter with activated carbon	High-tone horn
Allergen filter	Initial standard fuel filling
Alternator 140 A	Inserts of front seats and outer rear seats in fabric "Fusion"
Antenna for FM reception	Instrument cluster, km/h speedometer
Aspherical exterior mirror on driver side	Interior door handle in chrome
Battery 320 A (49 Ah)	Labels/plates in German/English/French
Body-colored bumpers	Left/right vent bezels and controls for radio and HVAC painted in chrome
Body-colored exterior mirror housings and door handles	Left-hand drive
Carpet mats in front and rear	light gray headliner
Carpet mats in front and rear	Luggage compartment cover
Carrier frequency 433.92 MHz-434.42 MHz	Luggage compartment floor adjustable and removable, two heights
Central locking system without SAFELOCK, incl. radio remote control	Luggage compartment lighting
Curtain airbag system for front and rear passengers incl. side airbags in front	Luggage compartment trim in combination with sound system
Customized installation	Manual in German (Germany)
Dash pad "Black Cube"	Manual transmission MQ100
Digital radio reception DAB+	maps + more dock
Driver and front passenger airbag with front passenger airbag deactivation	Mobile phone interface
Driver seat with height adjustment	move upÜ
Driving on the right	Multifunction camera
Drum brakes in rear	Multi-function display "Plus"
Electromechanical power steering	No special edition
Electronic Stability Control with hill hold control, ABS, ASR, EBD, and EDTC	No special purpose vehicle, standard equipment
Elimination of nameplate for engine designation on luggage compartment lid	Non-smoker's package: 12-V outlet in front
Emission standard EU6 AP	Not hot country
Entry aid Easy Entry with memory feature	Operating permit, alteration
Equipment options subset for Germany	Part set without country-specific prescriptive standard
Extended pedestrian protection	Plastic hand brake lever handle
	Power windows in front



Assessment

Number: 10326619
From: 30.03.2026

- Vehicle Inspection Report -

Radio "Composition Phone"	Winter wheels (additional) 4 steel wheels 5J x 14 snow tires 165/70 R14 T
Rear combination lamp, standard design	Winter wheels (additional) 4 steel wheels 5J x 14 snow tires 165/70 R14 T
Rear exhaust tailpipe (standard)	With trim panel
Rear fog lamp for driving on the right	Without add. lights (interior lighting)
Rear license plate carrier (ECE)	Without additional front underbody guard
Rear shock absorption, basic version 1	Without additional seals outside
Refrigerant R1234yf	Without adhesive film
Right exterior mirror, convex	Without alternative drive system
Separate daytime running light	Without bracket
Service indicator 15 000 km or 1 year (fix)	Without camera systems/accident sensors
Shock absorption in front	Without cruise control system (CCS)
Special identification label for EC for M1 passenger vehicles	Without decals and emblems
Standard climatic zones	Without decorative inserts
Standard design	Without extended safety system
Standard wheel bolts	Without fuse box
Starter switch locking system, theft protecting	Without LongLife Service Regime
Start-stop system with regenerative braking	Without Park Distance Control
Steel spare wheel with original equipment tire, 5J x 14, for 14-inch wheels	Without partition
Steel spare wheel with original equipment tire, 5J x 14, for 14-inch wheels	Without protective film for scuff plate
Steering wheel	Without roof insert (standard roof)
Suspension range 04 installation control only, no requirement forecast	Without roof rails
Tire Pressure Monitoring System	Without special measures
Tire suppliers for EU countries	Without storage compartment
Tires 165/70 R14	Without umbrella(s)
Tool kit and jack	
Transport protection film (minimum protection) with additional transport protection measures	
Two-piece dashboard	
Type approval country Germany	
Unsplit rear bench seat, 2 seats, asymmetric split folding backrest	
USB interface	
Vanity mirror in the front passenger's sun visor	
Vehicle class differentiation -120-	
Vehicles with special upgrade measures	
Ventilated disc brakes in front	
VW brand-specific/class-specific features	
Warning signal and warning light for front and rear seat belts not fastened	
We Connect Go	
Weight range 3 installation control only, no requirement forecast	
Wheel trims	
Windshield wiper intermittent control	
Winter package	



Assessment

- Vehicle Inspection Report -

 Number: 10326619
 From: 30.03.2026

» Tyres

MOUNTED TYRES

Make	Location	Position	Type	Rim	Dimensions	Profile depth
Dunlop	Front	Left	Winter	Steel	165/70 R 14 81 T	6.0 mm
Dunlop	Front	Right	Winter	Steel	165/70 R 14 81 T	6.0 mm
Dunlop	Rear	Left	Winter	Steel	165/70 R 14 81 T	6.0 mm
Dunlop	Rear	Right	Winter	Steel	165/70 R 14 81 T	6.0 mm

Permitted: Yes

Roadworthy: Yes

UNMOUNTED TYRES

Make	Location	Position	Type	Rim	Dimensions	Profile depth
Hankook			Summer	Steel	165/70 R 14 81 T	5.0 mm
Hankook			Summer	Steel	165/70 R 14 81 T	5.0 mm
Hankook			Summer	Steel	165/70 R 14 81 T	6.0 mm
Hankook			Summer	Steel	165/70 R 14 81 T	6.0 mm

Permitted: Yes

Roadworthy: Yes

SPARE/EMERGENCY TYRE & ACCESSORIES

Spare tyre provided: Yes

Make	Location	Position	Type	Rim	Dimensions	Profile depth
Hankook	Spare		Summer	Steel	165/70 R 14 81 T	8.0 mm

Permitted: Yes

Roadworthy: Yes

Toolkit present: Yes

Jack present: Yes



Assessment

- Vehicle Inspection Report -

Number: 10326619
From: 30.03.2026

» Devaluation Factors

Nr	Location	Damage type	Repair type
1	Door FL	Scratch(es)	Paint
2	Side wall RL	Dent(s) and scratch(es)	Repair and paint (complete)
3	Preparationtime metal painting	Paint preparation	Execute
4	Roof pillar L	Scratch(es)	Spot repair
5	Bumper F	Scratch(es)	Smart repair
6	Wing FR	Dent(s)	Paintless dent repair
7	Bonnet	Stone chip(s)	Touch up

» Usage Damages

The vehicle shows signs of wear consistent with its age, mileage and purpose.



Assessment

- Vehicle Inspection Report -

Number: 10326619
From: 30.03.2026

» Commercial devaluation

Known previous damages:	No
Previous damages detectable:	No
Repainting present:	No
Paint thickness measurement performed:	Yes - no abnormalities/deviations

PAINTTHICKNESS MEASUREMENT RESULTS

The measured values were in the usual range.

At least 3 measurements were carried out per component.



Assessment

Number: 10326619
From: 30.03.2026

- Vehicle Inspection Report -

» Notes On The Assessment

Details of the assignment and the scope of the assessment:

The order was placed to prepare a condition report on the described vehicle.

The vehicle condition assessment was carried out in accordance with the order on the basis of the standards for vehicle assessments specified by the client. The expert makes the findings in the individual case on the basis of his own expertise and at his own expert discretion.

Vehicle identification:

WVWZZZAAZND015158

VIN checked and matches documentation

Vehicle condition:

Well maintained general condition

Inspection condition:

Sufficient

Lifting platform/lifting equipment used:

No

Testdrive carried out:

No

Engine test carried out:

Yes



Assessment

- Vehicle Inspection Report -

Number: 10326619
From: 30.03.2026

» Remarks

This copy was generated electronically. It is valid without an original signature.



Assessment

- Vehicle Inspection Report -

Number: 10326619
From: 30.03.2026

» Commercial Pictures



Front Left 3/4



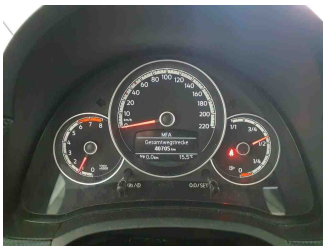
Front Right 3/4



Rear Left 3/4



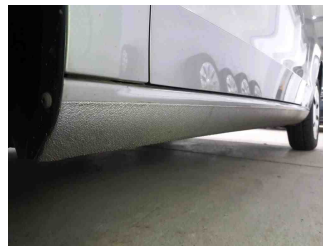
Rear Right 3/4



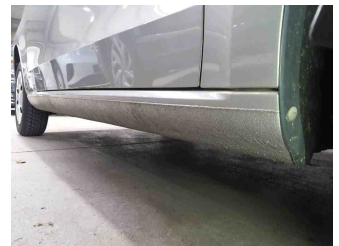
Mileage



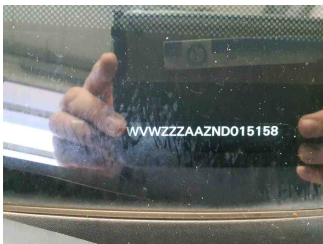
Tools



Sill outer L



Sill outer R



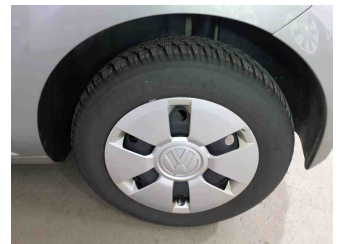
Chassis nr



Wheel FL



Wheel FR



Wheel RL



Wheel RR



Additional wheel 1



Additional wheel 2



Additional wheel 3



Additional wheel 4



Spare wheel



Central console



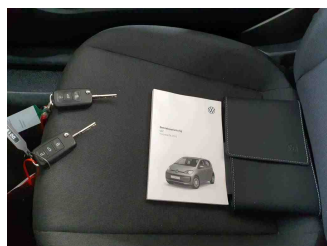
Engine compartment



Assessment

- Vehicle Inspection Report -

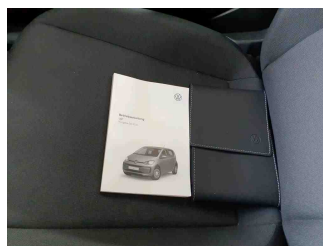
Number: 10326619
From: 30.03.2026



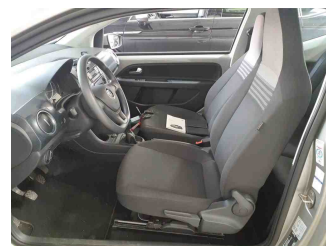
Documents



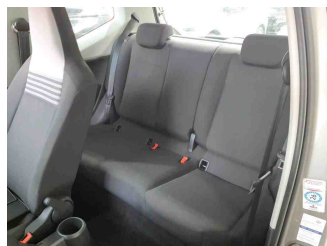
Interior arrangement



History Maintenance



Interior - front



Interior - rear



GPS/Radio



Assessment

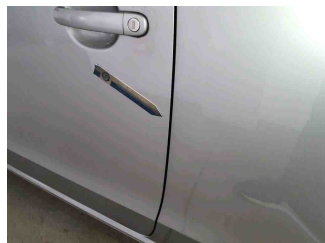
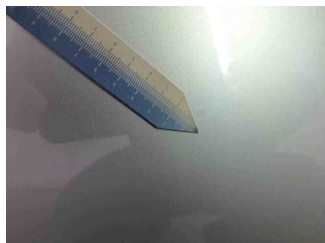
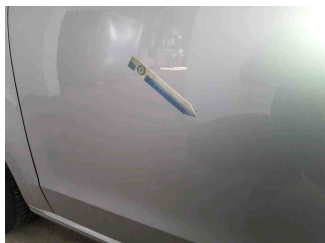
- Vehicle Inspection Report -

Number: 10326619
From: 30.03.2026

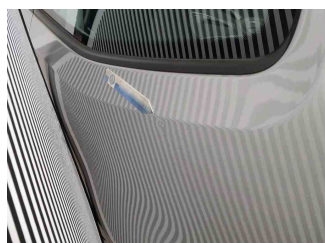
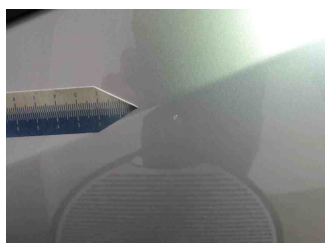
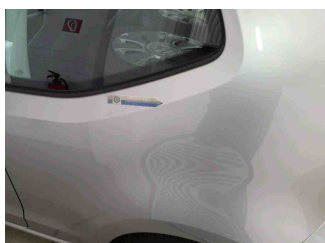
» Devaluation Damages

DEVALUATION FACTORS

1 - Door FL - Scratch(es) - Paint

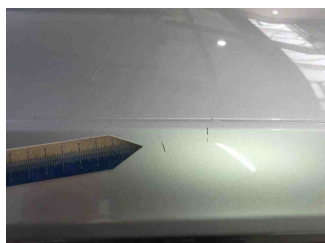
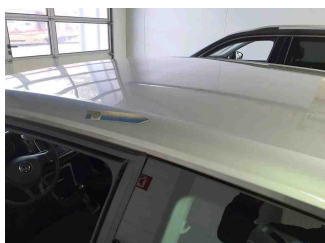


2 - Side wall RL - Dent(s) and scratch(es) - Repair and paint (complete)

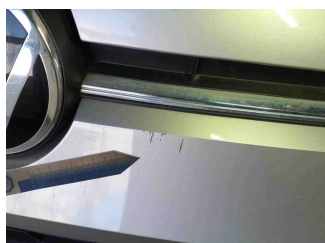
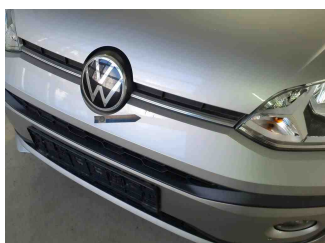


3 - Preparationtime metal painting - Paint preparation - Execute

4 - Roof pillar L - Scratch(es) - Spot repair



5 - Bumper F - Scratch(es) - Smart repair





Assessment

- Vehicle Inspection Report -

Number: 10326619
From: 30.03.2026

6 - Wing FR - Dent(s) - Paintless dent repair



7 - Bonnet - Stone chip(s) - Touch up

