

## Expertise

Protocol number: 45234562  
Order No. / Reference: 26292278  
Inspection date: 22 Apr 2026

Manufacturer: Mercedes-Benz

Model: 317 CDI Sprinter Standard HA 9G-TRONIC PRO

VIN: W1V3KBFZ7TP864282



### Vehicle details

#### Manufacturer / Type / Model / Equipment

Mercedes-Benz 317 CDI Sprinter Standard HA 9G-TRONIC PRO

**Vehicle Identification number** W1V3KBFZ7TP864282

**Mileage (Read)** 6,625 km

**First registration** 2 Oct 2025

**Number of holders** 1

**Power / Engine displacement** 125 kw / 1,950 ccm

**Fuel type / Cylinder** Diesel / 4

**Gearbox / Number of gears** Automatic / 9

**Type of drive** Rear drive

**Type of vehicle** Van

**Colour / colour code** Arktikweiss

**Doors / Seats** 4 / 3

**Upholstery type** Cloth

**Colour of upholstery** Black

**Type of use** rental car



## Vehicle details

<b>Maintenance booklet / proof</b>	Available / complete	<b>Next maintenance in</b>	459 Tag(e)
<b>Key is / should be</b>	1 / 2	<b>FZG documents</b>	ZB#2 (B) was available (copy), ZB#1 (S) was not available.
		<b>Letter No.</b>	HP676287
<b>Previous damage / Accident</b>	None detectable	<b>Repainting</b>	None detectable
<b>Inspection conditions</b>	sufficient	<b>Lifting equipment / pit</b>	No
<b>Test drive</b>	Not performed	<b>Engine function test</b>	Performed
<b>Manufacturer key number/ type code number</b>	2222 / BSU 63509		
<b>Emission standard</b>	EURO6;WLTP;EB;PI/CI;M, N1, N2	<b>fine dust sticker</b>	
<b>Permitted total weight</b>	3,500 kg	<b>Empty weight</b>	

## Tyres

### Mounted tyres

#	Tyre size	Type of tyre	Manufacturer	Tread depth
1)	235/65 R16 115R	All-season tyres on Steel rim with wheel cover	Falken	6mm / 6mm
2)	235/65 R16 115R	All-season tyres on Steel rim with wheel cover	Falken	6mm / 6mm

**Legend: Tread depth information for the left tire is listed first, for the right tire it is listed second on the axle in the direction of travel.**



## Equipment

### Standard equipment

- Storage compartment above windshield
- Rear towing eye
- ADAPTIVE ESP (latest generation) with load- and speed-dependent driving dynamics control
- Active Lane Keeping Assist
- Electrically adjustable and heated exterior mirrors, left and right
- Battery: fleece battery 12 V / 92 Ah
- Brake assist, active
- Brake lights, adaptive
- Roof: High roof
- Diesel particulate filter and SCR
- Tachometer
- Electrical components for trailer socket
- HVO-capable vehicle
- Generator 14 V / 250 A
- Transmission: 9G-TRONIC
- Seatbelt warning device for driver's seat
- Grab handle for entry of driver and passenger
- Main tank 93 liters
- Intelligent speed assistant
- Tempmatic controlled air conditioning
- Headrests (2), front
- Cable duct at rear portal
- Steering wheel adjustable for tilt and height
- Headlight range control
- Marker lights, side
- Navigation: Navigation pre-installation
- Package: Acoustics
- Upholstery: Cloth
- Radio: MBUX multimedia system
- Rain sensor
- Tires: Tires without specified make
- Tire pressure monitoring
- Wheels: Premium complete wheel protection
- Rear view camera
- Crosswind Assist
- Seats: Passenger seat, two-seater
- Start-stop function
- USB 5V socket
- Cruise control
- continuous partition wall
- Lashing eyes
- Pre-installation for Remote Services Plus
- Immobiliser
- Heat-insulating glass with band filter on the windshield
- Approval N1
- Storage compartment under cockpit
- Axle ratio  $i = 3.923$
- Passenger side airbag
- Driver's side airbag
- ATTENTION ASSIST
- Electrically folding exterior mirrors
- Outdoor temperature display
- Hill start assist
- third brake light
- COC documents
- Ceiling light in the cargo/passenger compartment
- Digital operating instructions
- Entry handle on rear right corner pillar
- Driving light assistant
- Electric window regulator for driver and passenger door
- Noise measures
- Seatbelt warning device for front passenger seat
- Grab handle for entry to the cargo area sliding door on the partition wall
- HOLD function
- Clothes hooks in the driver's cab
- Instrument cluster with color display
- Paint finish: Solid color paint
- Cable duct on side wall
- Steering wheel: Multifunction steering wheel
- Longitudinal beam reinforcement
- Mercedes-Benz emergency call system
- Without weight increase/decrease: 3,500 kg
- Breakdown management
- Radio: Digital Radio DAB
- Radio accessories: Communication module (LTE) for digital services
- Tires: Tires optimized for rolling resistance
- Wheels: Tires 235/65 R 16 C
- Wheels: Steel rims 6.5 J x 16
- Sliding door on the right, cargo/passenger compartment
- Power steering
- Seats: Driver's seat
- Jump-start contact
- Speedometer km/h
- Blind Spot Assist
- First aid kit
- Front axle with increased load capacity
- Warning triangle
- Parking light removed
- Central locking with radio remote control
- Registration certificate, Part II



## Extra equipment

- Storage for smartphones including wireless charging
  - Reference mass of at least 2611 kg is necessary.
  - Hinged lid for storage compartment
  - LED light strip in the cargo area
  - Package: Parking package with 360° camera (Parking Assistant Rear Cross Traffic Alert Drive Away Assist)
  - Wheel arch loadable
  - Seats: Driver's seat box, low
  - Phone: Smartphone integration package
- Entrance rear door
  - Wooden floor (cargo area)
  - Load securing: Lashing rails on the side wall to the side railing.
  - Package: Winter Package (WET WIPER SYSTEM - Heated seat for passenger - Heated seat for driver)
  - Seats: Driver's seat armrest
  - Seats: Suspension seat comfort version, driver's seat
  - Long-throw nozzles in I-panel

## Brief expert findings

Documents submitted	At the time of the inspection, the vehicle registration certificate Part 2 (title) was available, but the vehicle registration certificate Part 1 (document) was not. (Copy)
VIN comparison	The vehicle identification number (VIN) was read from the vehicle and its conformity with the submitted documents was confirmed by the undersigned during the inspection.
Inspection	The inspection conditions were sufficient for the assessment of the vehicle. No lifting equipment or pit was available for inspecting the vehicle. Therefore, inspection of the vehicle's underside was only possible to a limited extent.
Test drive	No test drive/shunting maneuver was carried out during the inspection of the vehicle.
Engine function test	An engine test run was performed.

## Value reducing factors

No.	Component group	Description
1	Door - front left side	Door (Wespennest Türinnenseite) - Remove

## Wear and tear

No.	Component group	Description
1	Vehicle glazing	Windscreen - Stone chips - No deduction
2	Bonnet	Bonnet - Stone chips - No deduction
3	Front bumper	Front bumper - Stone chips - No deduction
4	Interior	Interior - Scratch(es) - No deduction
5	Rear bumper	Rear bumper - Scratch(es) - No deduction

The vehicle shows signs of wear and tear commensurate with its age and use.

## Missing parts

### Description

Equipment - Vehicle key



## Order/Scope of Order

An order was placed to prepare a sales report for the described vehicle. This report includes the following:

- Description of key vehicle information
- Documentation of equipment features  
*(Delivery by third-party service providers)*
- Documentation of damage, defects, missing parts
- Documentation of prior damage, unrepaired prior damage, repainting
- A brief visual or functional inspection of the equipment details, if possible.  
*(Functional testing of driver assistance systems is not included in the scope of services!)*
- a photographic documentation of the vehicle

## Basis for the order

This product is based on the guidelines for vehicle returns and valuations of light commercial vehicles published by Alphabet Fleet Management GmbH. The expert makes the specific findings in each individual case objectively, within the framework of the prescribed standards, based on their own expertise.

The vehicle inspection takes place in a fully assembled, unassembled state.

Damage or defects that can only be detected during disassembly/diagnostic work or through further investigation remain within the realm of prognostic risk. An increased risk exists due to concealed defects caused by fraudulent misrepresentation and which were not identifiable by the expert.

Damage or defects resulting from normal use or wear and tear of the vehicle will be accepted in accordance with the applicable standard.

There was no explicit identification or monetary consideration of the expected features within the product.

Features which, in their nature and extent, slightly exceed normal use but do not constitute unacceptable damage, will be documented and indicated as signs of wear, if applicable.

Damage or defects that, according to the applicable standard, can no longer be attributed to normal use or wear and tear are listed under "Value Reducing Factors" in the product description.

Depending on the product specification, a monetary ID can be provided. If this takes place, the costs can be 100% d or pro rata depending on the vehicle's age and mileage.

## Previous damages

No apparent prior damage that had been repaired could be found on the vehicle.

## Comments

- Die Unterbodenbesichtigung war nur ebenerdig & eingeschränkt möglich. Mehrkosten möglich.

- Das Fahrzeugdach konnte unter den gegebenen Bedingungen nicht begutachtet werden. Etwaige wertmindernde Faktoren fließen nicht in diese Beurteilung hinein.



Figure 1: Diagonal front (left)



Figure 2: Diagonal front (right)



Figure 3: Diagonal rear (left)



Figure 4: Diagonal rear (right)



Figure 5: Interior - front



Figure 6: Interior - rear



Figure 7: Instrument cluster



Figure 8: Instrument panel



Figure 9: Interior 360° view



Figure 10: Cargo area



Figure 11: VIN



Figure 12: Mounted tyres

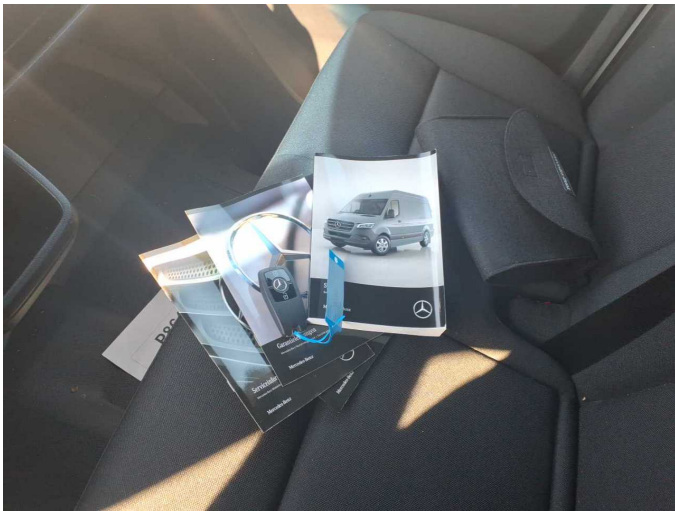


Figure 13: Documents

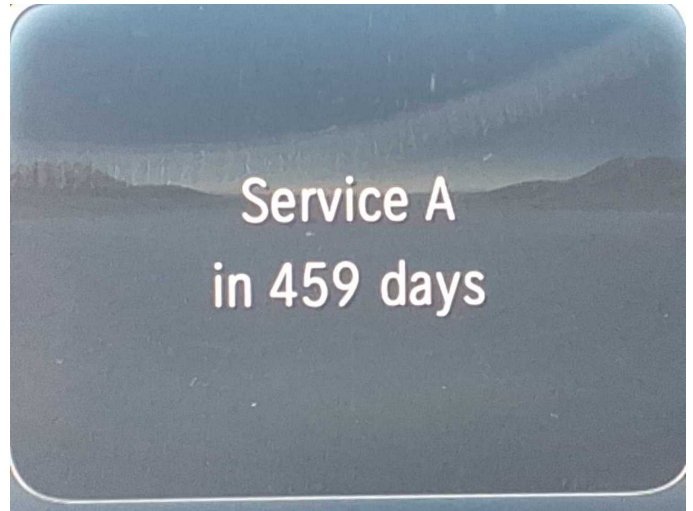


Figure 14: Documents



Figure 15: Misc.



Figure 16: Misc.



Figure 17: Misc.



Figure 18: Misc.



Figure 19: Misc.



Figure 20: Misc.

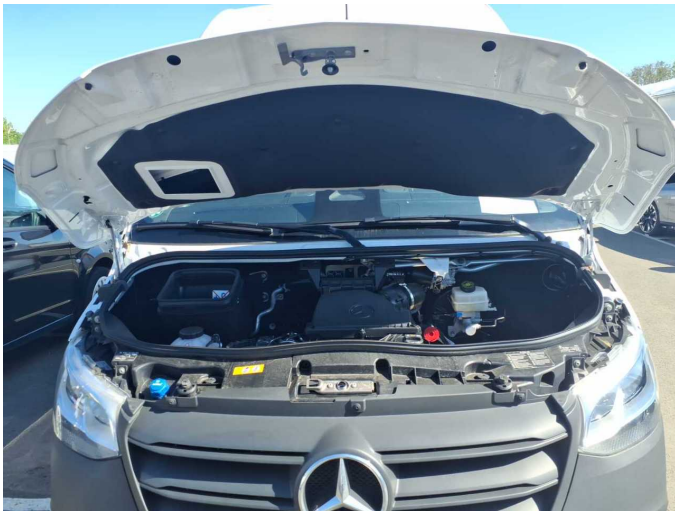


Figure 21: Misc.



Figure 22: Misc.



Figure 23: Misc.

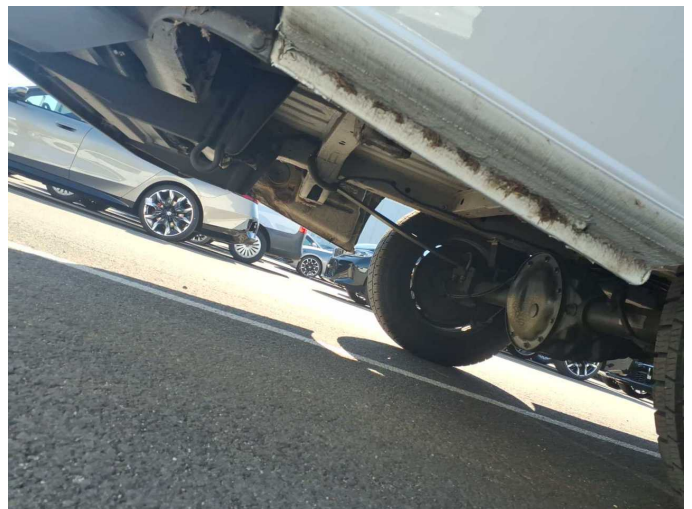


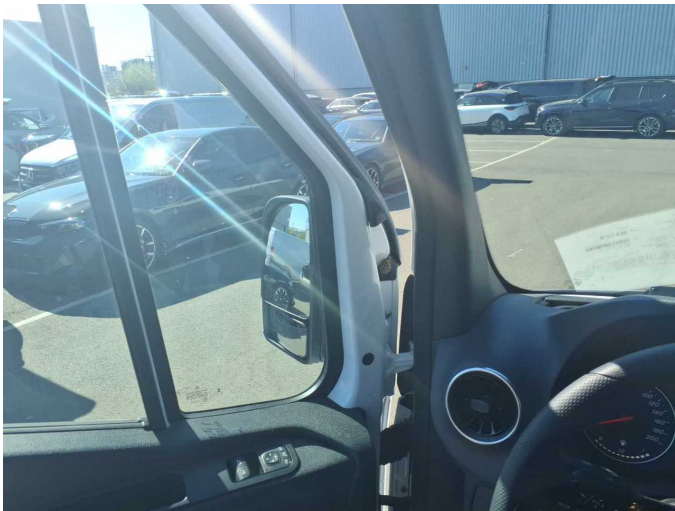
Figure 24: Misc.



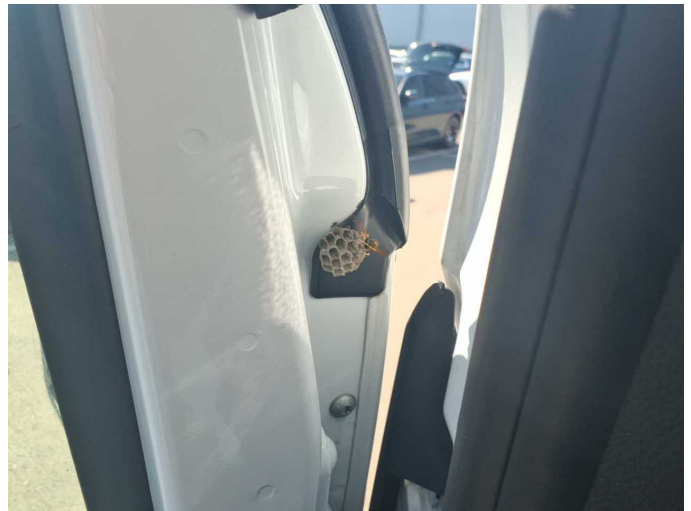
Figure 25: Misc.



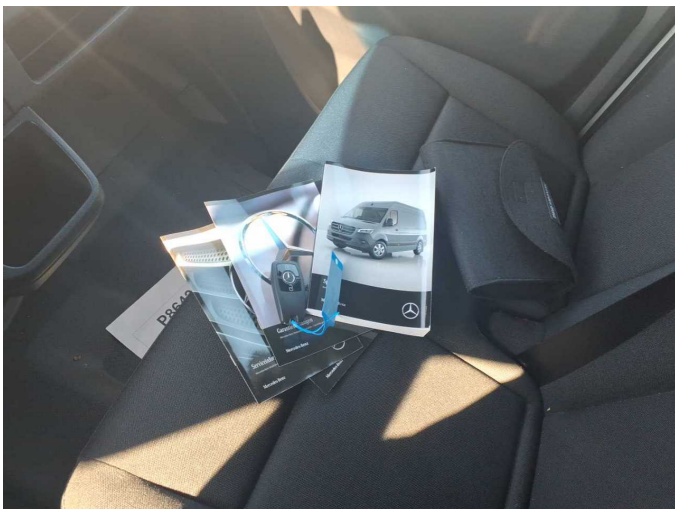
Figure 26: Misc.



Damage 1: Door - front left side: Door (Wespennest Türinnenseite) - Remove



Damage 1: Door - front left side: Door (Wespennest Türinnenseite) - Remove



Missing part 1: Equipment: Vehicle key - Missing - Replace