

Expertise

Protocol number: 45939669
Order No. / Reference: 26489435
Inspection date: 15 Jun 2026

Manufacturer: Volvo

Model: XC90 T8 AWD Recharge Ultimate Dark

VIN: YV1LFH5V2P1978089



Vehicle details

Manufacturer / Type / Model / Equipment

Volvo XC90 T8 AWD Recharge Ultimate Dark

Vehicle Identification number YV1LFH5V2P1978089

Mileage (Read) 104,900 km

First registration 6 Apr 2023

Number of holders 1

Power / Engine displacement 228 kw / 1,969 ccm

Fuel type / Cylinder Hybr.B/E ext.auf1 / 4

Gearbox / Number of gears Automatic / 8

Type of drive All-wheel drive

Type of vehicle SUV

Colour / colour code Onyx Schwarz-Metallic

Doors / Seats 5 / 7

Upholstery type Leather

Colour of upholstery Anthracite-Black



Vehicle details

Maintenance booklet / proof	digital proof / complete	Next maintenance in	14,924 km
Last service on / at	12/2025 at 89,824 km		
Key is / should be	2 / 2	FZG documents	ZB#2 (B) was available (copy), ZB#1 (S) was not available.
		Letter No.	GQ222011
Previous damage / Accident	None detectable	Repainting	None detectable
Inspection conditions	sufficient	Lifting equipment / pit	yes
Test drive	Not performed	Engine function test	Performed
Manufacturer key number/ type code number	9101 / BUL 00009		
Emission standard	EURO6;WLTP;AP;PI/CI; M, N1 I	fine dust sticker	
Permitted total weight	2,950 kg	Empty weight	

Tyres

Mounted tyres

#	Tyre size	Type of tyre	Manufacturer	Tread depth
1)	235/55 R19 105V	Winter tyres on Light alloy	Continental	6mm / 6mm
2)	235/55 R19 105V	Winter tyres on Light alloy	Continental	6mm / 6mm

Additional tyres

#	Tyre size	Type of tyre	Manufacturer	Tread depth
1)	275/40 R21 107V	Summer tyres on Light alloy	Continental	5mm / 5mm
2)	275/40 R21 107V	Summer tyres on Light alloy	Continental	5mm / 5mm

Replacement

Typ	Tyre size	Type of tyre	Manufacturer	Tread depth
	Tirefit	Expiration date 03/2027		

Legend: Tread depth information for the left tire is listed first, for the right tire it is listed second on the axle in the direction of travel.

TÜV SÜD Auto Partner GmbH
Wiesenring 2
04159 Leipzig

Inspection location
Hartmann Compound Professionals
Arnoldschacht 9-11
44894 Bochum



Equipment



Standard equipment

- ABS - Anti-lock Braking System
- Advanced air purification system with fine dust filtration according to air quality standard PM2.5
- Air conditioning for the 3rd row of seats
- Airbags (airbags for driver and front passenger with two-stage deployment system - knee airbag for driver - side airbags for driver and front passenger - head/shoulder airbags for all occupants)
- All-wheel drive (AWD) (depending on the driving mode)
- Android infotainment system (9" touchscreen (22.9 cm diagonal) - Bluetooth hands-free system incl. audio streaming - Digital vehicle owner's manual - Digital radio reception (DAB+) - 2 USB-C ports (compatible with Apple iPod/iPhone/iPad))
- Applications in the front bumper in high-gloss black
- Armrests with integrated storage compartment and cup holders for the 3rd row of seats (left and right)
- Attachment system for carrier bags in the luggage compartment
- Bottle holder in the luggage compartment
- Charging cable Schuko/Type 2 (Mode 2) (7 m length, 1-phase, 10A (for connection to a standard 230-volt household socket))
- Digital Services including Google Maps navigation system (Google Services (includes Google Maps, Google Assistant, Google Play Store and unlimited data) - Volvo On Call (includes, among other things, contacting the Volvo On Call service center at the touch of a button and additional convenience services via the Volvo CarsApp) - Usage is time-limited and will be subject to charges thereafter. Further information on renewal is available from a Volvo dealer partner.)
- Driver Awareness (Blind Spot Information System (BLIS) - Blind Spot Assist including Lane Change Warning for rapidly approaching vehicles - Cross Traffic Alert (CTA) - Cross Traffic Warning with braking intervention - Warning of vehicles, cyclists and pedestrians approaching from the side when reversing out of a parking space, including braking to a standstill if warning signals are ignored - Rear Impact Mitigation - Preventive protection in case of impending rear-end collisions)
- Electric auxiliary heater with timer
- Electric parking brake
- First aid kit and warning triangle
- Fog sensor for automatic activation of the defroster function
- Front center armrest including cup holder
- Head-up display: Graphic projection of driving information onto the windshield
- Headrests (7)
- Headrests of the 2nd row of seats can be folded down (electrically)
- Heated exterior mirrors and rear window (automatic)
- Heated rear window
- High-gloss black applications on the rear of the vehicle
- Interior and exterior mirrors automatically dimming
- ISOFIX mounting for the outer rear seats
- Acoustic Vehicle Alerting System (AVAS) (Acoustic pedestrian/cyclist protection through artificially generated driving noises in the speed range up to 20 km/h)
- Active safety belts with belt tensioners (pre-activation of the belt tensioners in dangerous situations and belt force limiter)
- Aluminum door sill plates with Recharge lettering, front and rear
- Aluminum loading sill protector in the luggage compartment
- Automatic climate control with 4-zone temperature control (Individual climate control for driver, front passenger and rear passengers left and right (2nd row of seats) including climate display for the 2nd row of seats)
- Automatic emergency braking (emergency braking mechanism after the deployment of the airbags or seatbelt pretensioners to prevent secondary accidents)
- Automatic tailgate (electric)
- Brake energy recuperation
- Cargo area roller blind (semi-automatic)
- Central locking with two remote controls and integrated emergency key (including automatic locking of the glove compartment and doors while driving (can be deactivated), panic function (integrated in the remote control), comfort opening/closing of the side windows and, if applicable, sunroof via remote control, luggage compartment lid release via remote control or from the driver's seat)
- Charging box under the cargo floor
- Child safety lock for the rear doors (electric)
- Dashboard and door trim in leather look with contrasting stitching
- Deactivation of the high-voltage battery (in case of a collision)
- Digital instrumentation 2nd generation (Full graphic 12.3" driver display (31.2 cm diagonal) with two variable round instruments and information display (e.g. for navigation map view))
- Driver Assistance (Emergency Stop Assist (automatic emergency stopping system in case of failure to heed warnings due to lack of steering, braking and acceleration activity by the driver, including activation of the hazard warning lights and automatic braking to a standstill) - Pilot Assist (lane guidance assistant with adaptive cruise control up to speeds of 130 km/h) - Adaptive cruise control)
- Electric windows front and rear (with auto-down and auto-up function)
- Electrically adjustable exterior mirrors
- Electrically folding exterior mirrors
- Electronic differential lock
- Electronic Stability Control
- Emergency brake lights (brake lights flash rapidly during heavy deceleration; hazard warning lights are automatically activated at speeds below 10 km/h)
- Glazing: Colored glazing
- Headliner and door pillars in nubuck fabric (including leather trim for sun visors and grab handles)
- Hill Descent Control (HDC)
- Hill Start Assist (HSA)



- Keyless Drive (electronic access system) (with sensor-controlled tailgate, illuminated door handles and floor lights)
- Lashing eyes in the luggage compartment (foldable)
- Luggage compartment partition net
- On-board computer (with vehicle control functions)
- Otto particulate filter
- Package: Lighting Package (Headlight cleaning system - Full LED headlights "Thor's Hammer" Active High Beam with extended high beam, dynamic cornering lights, intelligent high beam assist with adaptive headlight range control and integrated LED daytime running lights - Ambient lighting Extended: Ambient lighting front/rear, on the upper dashboard, on the doors Exit lights front/rear Illuminated door pockets - openers front/rear Front entry lights with lettering Rear footwell lighting Work light on the tailgate)
- Parking ticket holder
- Passenger side airbag can be deactivated
- Phone: Inductive smartphone charging system (Wirelessly charges smartphones that support the Qi standard on a charging pad)
- Pollen filter
- Radio accessories: Smartphone integration Apple CarPlay
- Radio accessories: Two USB-C ports on the back of the center console
- Roof edge spoiler
- Roof rails in high-gloss black (integrated)
- Safety braking system with disc brakes all around (internally ventilated) (automatic brake system pre-tensioning, brake assist and automatic hold function)
- Seats: Rear bench seat of the 2nd row in a 40/20/40 ratio or completely foldable (incl. individual backrest angle adjustment)
- Seats: Third row of seats (7-seater) (manually adjustable and retractable with longitudinal adjustment (120 mm) for the 2nd row of seats and easy-entry function)
- Speed-sensitive power steering
- Sport front and rear apron
- Start/Stop technology
- Steering wheel: Multifunction buttons on the steering wheel
- Sun blinds for the rear side windows (integrated)
- third brake light
- Tire pressure monitoring system (with tire-specific pressure loss warning)
- Transmission: 8-speed automatic transmission
- Warning tone/indicator when seat belts are not fastened (for all seats)
- Wheels: 20" 5-spoke alloy wheels, diamond cut/high-gloss black (with all-season tires 275/45 R20; rims 9 x 20")
- Wheels: Tire sealant (Incl. 12-volt compressor, maximum speed 80 km/h)
- Whiplash Protection System (WHIPS) (including immersion protection on all seats and energy-absorbing front seat cushions)
- Window surround in high-gloss black
- Illuminated makeup mirror for driver and front passenger
- Immobiliser
- Intelligent driver information system (delays incoming calls or vehicle information in dangerous situations)
- Keyless Start (electronic engine start system)
- LED turn signals integrated into the exterior mirrors
- Outdoor temperature display
- Package: Seat Comfort Package (Electrically adjustable front passenger seat (8-way) - Electrically adjustable driver's seat (8-way) with memory function for driver's seat and exterior mirror settings (stored in the remote control) - Lumbar support (4-way electrically adjustable) for driver and front passenger seats - Memory function for front passenger seat - Adjustable leg support for driver and front passenger seats)
- Panoramic glass sliding sunroof with lifting function (electric) (with integrated, continuously adjustable sunshade)
- Parking assistance, front and rear (with automatic braking intervention)
- Power outlet (12-volt connection in the luggage compartment)
- Premium textile floor mats, front and rear
- Preparation for Trailer Stability Assist (TSA)
- Radio: Premium Sound audio system by Harman/Kardon (600 watts of power - 14 speakers - Fresh Air - Subwoofer - Dirac Unison - Sound optimization)
- Rain sensor with automatic light function
- Rear view camera
- rear window wiper
- Run-off Road Protection (preventive protection system in case of unintentional road leaving or impending rollovers including pre-activation of the seat belt tensioners, deactivation of the battery (plug-in hybrid only), emergency call via Volvo On Call and door unlocking)
- Safety Assistance (Ultimate) (Automatic emergency braking system with detection of vehicles, cyclists, pedestrians and large animals including intersection braking assist and emergency braking assist for oncoming traffic - Connected Safety - Distance warning - Driver Alert - Attention warning - Variable speed limiter - Cruise control - Lane Keeping Aid (LKA) - Active lane keeping assist - Oncoming Lane Mitigation - Ready to Drive notification - Road Edge Detection - Road Sign Information (RSI) - Traffic sign recognition)
- Seat belt height adjustment front and rear (2nd row of seats)
- Seats: Child seat integrated in the middle rear seat (2nd row).
- Seats: Heated front seats
- Seats: Heated rear seats (outer seats of the 2nd row)
- Sport exterior mirrors in high-gloss black
- Sport front grille with horizontal struts and surround in high-gloss black
- Steering wheel adjustable for height and reach
- Steering wheel: Steering wheel heating
- Textile floor mat for the 3rd row of seats



Extra equipment

- 21" 5V Spoke Design
- Paint finish: Metallic paint
- Upholstery: Nappa leather comfort seats (perforated front seats) (with active ventilation and electrically adjustable side bolsters for driver and front passenger seats including rear center armrest (2nd row) - gearshift lever made of Swedish crystal glass by Orrefors - real wood inlay: Grey Ash - headliner: light beige)
- Towbar (semi-electric)
- Parking camera with 360° surround view (including front, side and rear parking aid with automatic braking intervention (rear))
- Seats: Massage function for driver and front passenger seats
- Glazing: Acoustic glazing for the side windows (UV and burglar-resistant laminated glass panes)

Brief expert findings

Documents submitted	At the time of the inspection, the vehicle registration certificate Part 2 (title) was available, but the vehicle registration certificate Part 1 (document) was not. (Copy)
VIN comparison	The vehicle identification number (VIN) was read from the vehicle and its conformity with the submitted documents was confirmed by the undersigned during the inspection.
Inspection	The inspection conditions were sufficient for the assessment of the vehicle. Lifting equipment and/or a pit were available for examining the vehicle.
Test drive	No test drive/shunting maneuver was carried out during the inspection of the vehicle.
Engine function test	An engine test run was performed.

Value reducing factors

No.	Component group	Description
1	Side panel - rear left side	Sill - dent(s) - Smooth repair work
2	Instrument panel	Indicator light (Abstandhalter+ Scheinwerfer) - on - Perform diagnosis
3	Front bumper	Front bumper (Sandstrahleffekt) - Stone chips - Paint
4	Door - front left side	Door - Dent / paintcoat damage - Repair and paint

Wear and tear

No.	Component group	Description
1	Body	Body (Waschstraßenkratzer) - Scratch(es) - No deduction
2	Rear bumper	Rear bumper - Scratch(es) - No deduction

The vehicle shows signs of wear and tear commensurate with its age and use.

Order/Scope of Order

An order was placed to prepare a sales report for the described vehicle. This report includes the following:

- Description of key vehicle information
- Documentation of equipment features
(*Delivery by third-party service providers*)
- Documentation of damage, defects, missing parts
- Documentation of prior damage, unrepaired prior damage, repainting
- A brief visual or functional inspection of the equipment details, if possible.
(*Functional testing of driver assistance systems is not included in the scope of services!*)
- a photographic documentation of the vehicle



Basis for the order

This product is based on the guidelines for vehicle returns and valuations published by Alphabet Fleet GmbH. The expert makes the specific findings in each individual case objectively, within the framework of the prescribed standards, based on their own expertise.

The vehicle inspection takes place in a fully assembled, unassembled state.

Damage or defects that can only be detected during disassembly/diagnostic work or through further investigation remain within the realm of prognostic risk. An increased risk exists due to concealed defects caused by fraudulent misrepresentation and which were not identifiable by the expert.

Damage or defects resulting from normal use or wear and tear of the vehicle will be accepted in accordance with the applicable standard.

There was no explicit identification or monetary consideration of the expected features within the product.

Features which, in their nature and extent, slightly exceed normal use but do not constitute unacceptable damage, will be documented and indicated as signs of wear, if applicable.

Damage or defects that, according to the applicable standard, can no longer be attributed to normal use or wear and tear are listed under "Value Reducing Factors" in the product description.

Depending on the product specification, a monetary ID can be provided. If this takes place, the costs can be 100% d or pro rata depending on the vehicle's age and mileage.

Previous damages

No apparent prior damage that had been repaired could be found on the vehicle.

Comments

Der montierte Radsatz ist nicht Bestandteil der Ausstattung.



Figure 1: Diagonal front (left)



Figure 2: Diagonal front (right)



Figure 3: Diagonal rear (left)



Figure 4: Diagonal rear (right)



Figure 5: Interior - front



Figure 6: Interior - rear



Figure 7: Instrument cluster



Figure 8: Instrument panel



Figure 9: Interior 360° view



Figure 10: Cargo area



Figure 11: VIN



Figure 12: Mounted tyres



Figure 13: Documents

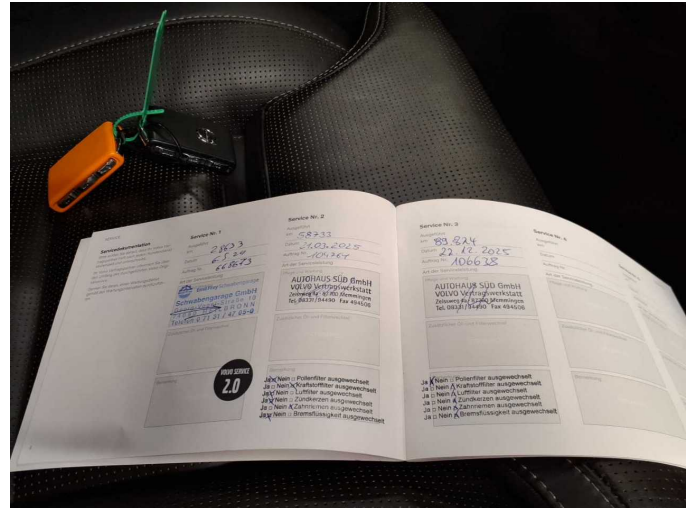


Figure 14: Documents



Figure 15: Additional tyres

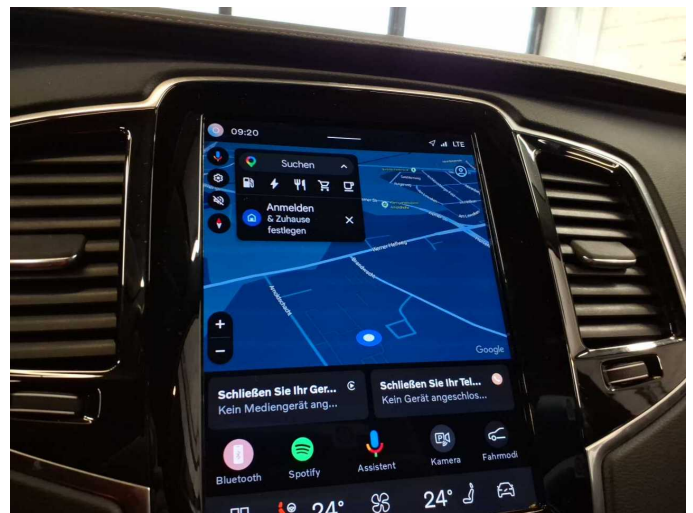


Figure 16: Navigation

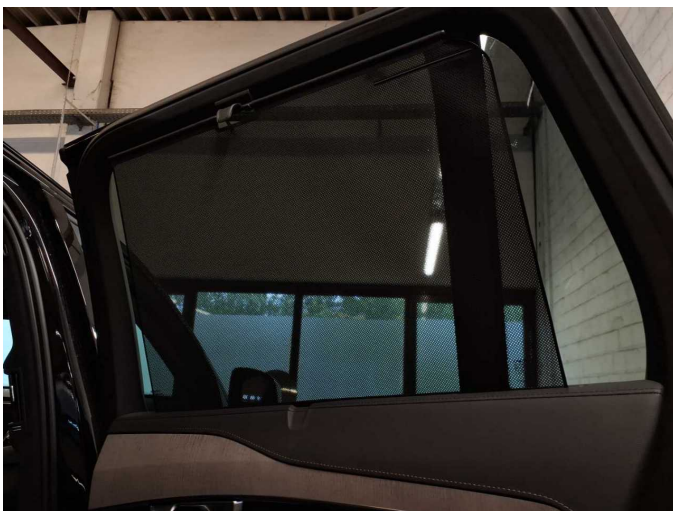


Figure 17: Misc.



Figure 18: Misc.



Figure 19: Misc.



Figure 20: Misc.



Figure 21: Misc.



Figure 22: Misc.

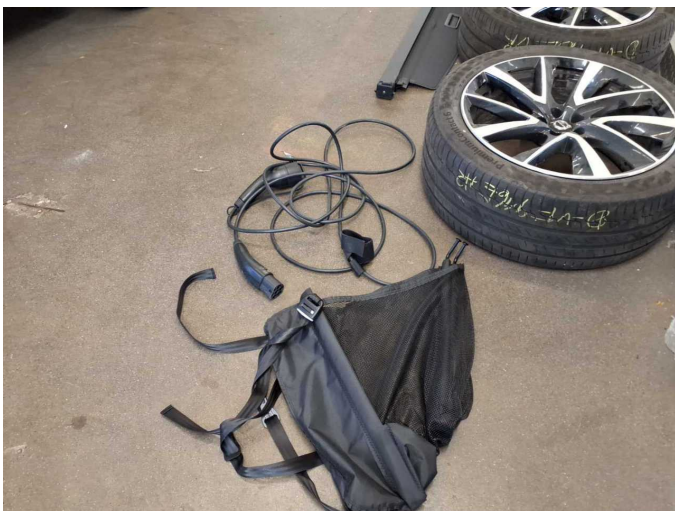


Figure 23: Misc.

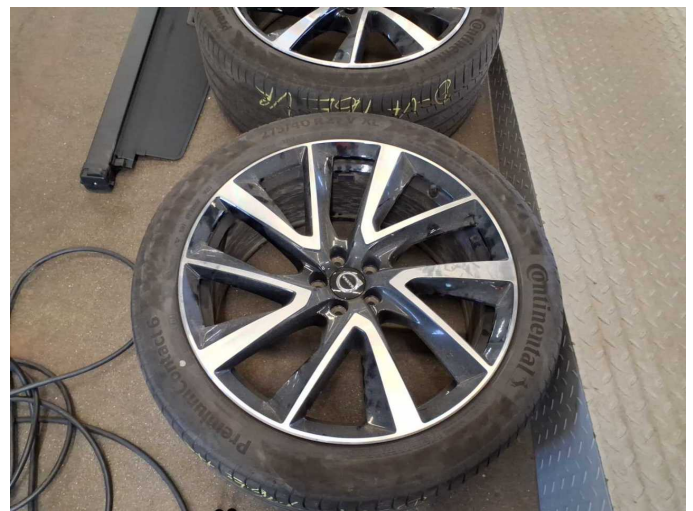


Figure 24: Misc.



Figure 25: Misc.



Figure 26: Misc.

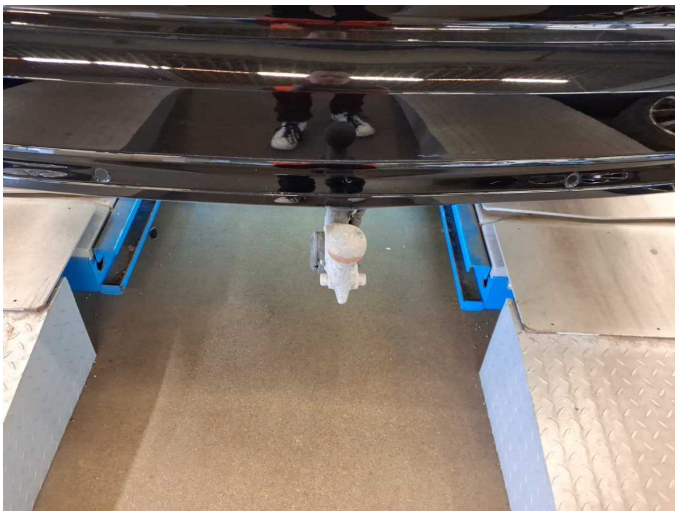


Figure 27: Misc.



Figure 28: Misc.



Figure 29: Misc.

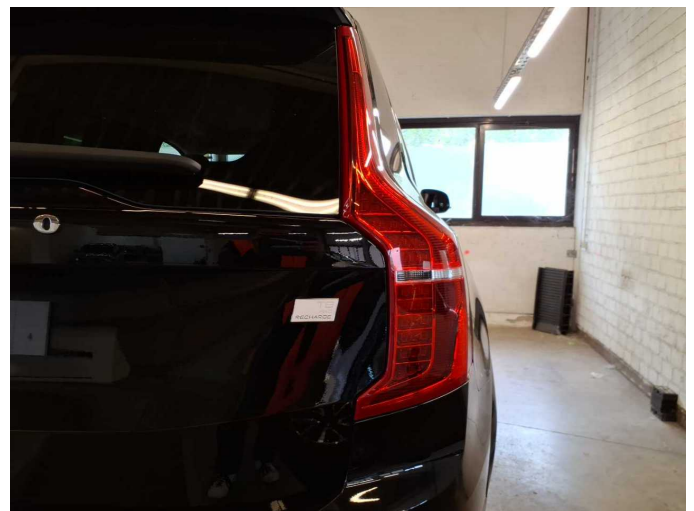


Figure 30: Misc.



Figure 31: Misc.



Figure 32: Misc.



Figure 33: Misc.



Figure 34: Misc.



Figure 35: Misc.

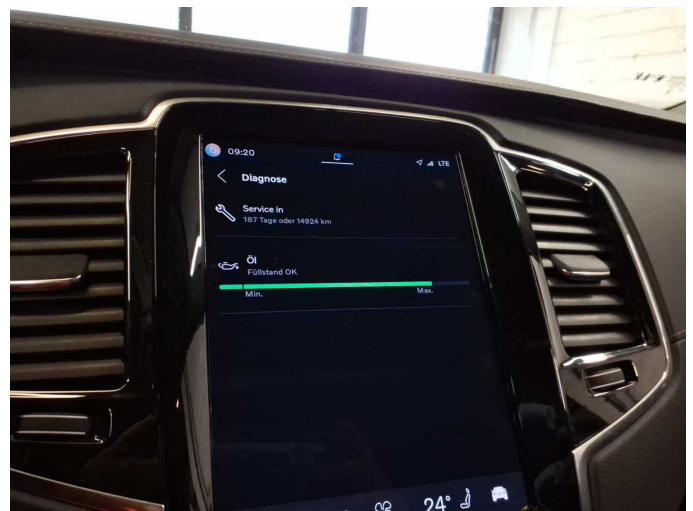


Figure 36: Misc.



Figure 37: Misc.



Figure 38: Misc.

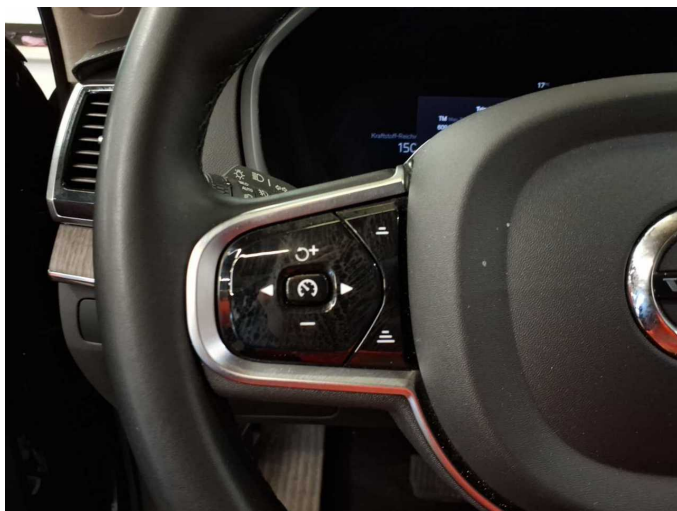


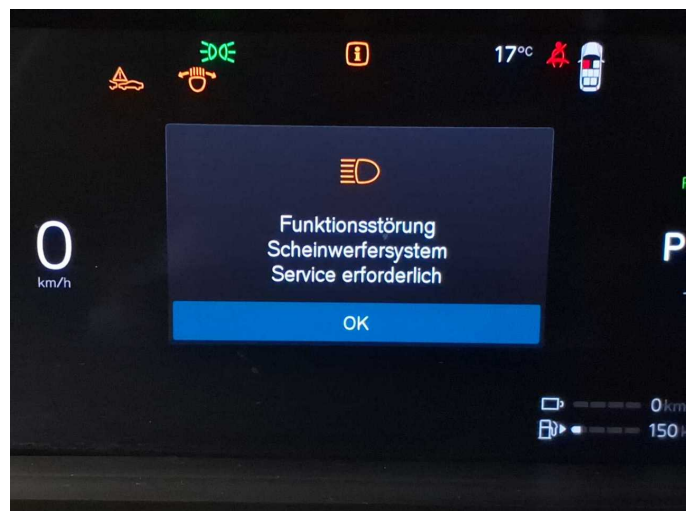
Figure 39: Misc.



Damage 1: Side panel - rear left side: Sill - dent(s) - Smooth repair work



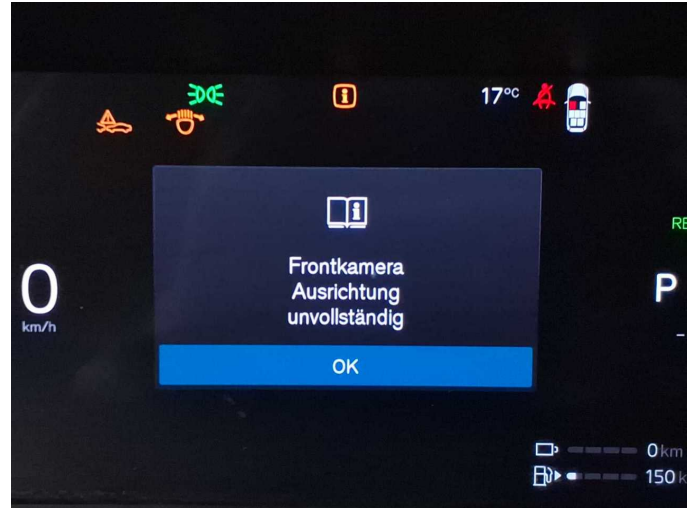
Damage 1: Side panel - rear left side: Sill - dent(s) - Smooth repair work



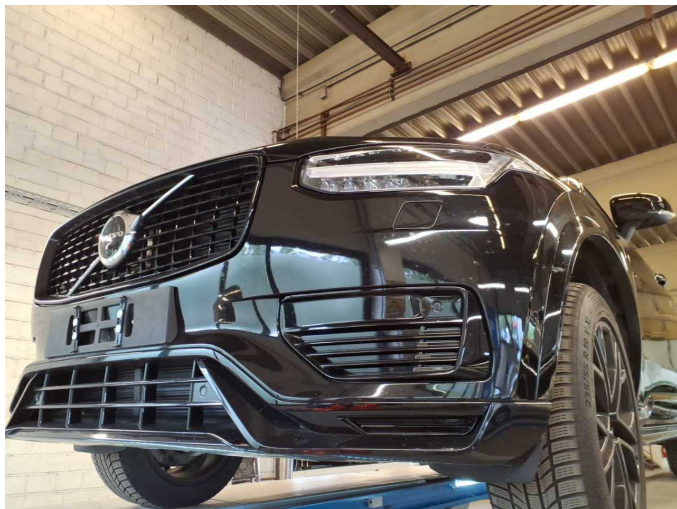
Damage 2: Instrument panel: Indicator light (Abstandhalter+Scheinwerfer) - on - Perform diagnosis



Damage 2: Instrument panel: Indicator light (Abstandhalter+Scheinwerfer) - on - Perform diagnosis



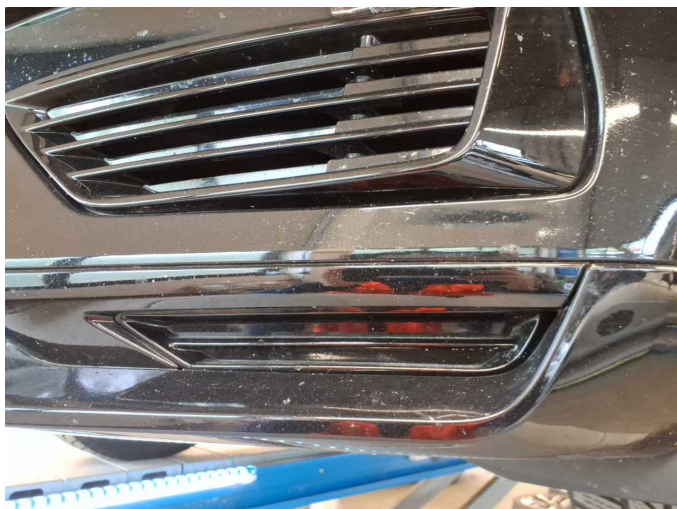
Damage 2: Instrument panel: Indicator light (Abstandhalter+Scheinwerfer) - on - Perform diagnosis



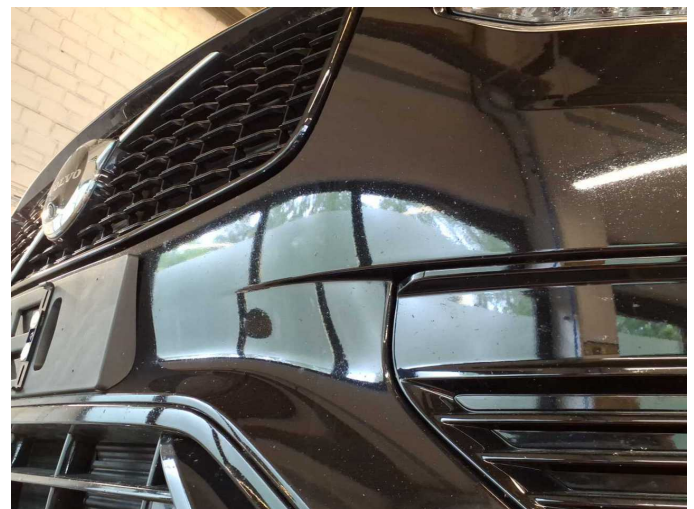
Damage 3: Front bumper: Front bumper (Sandstrahleffekt) - Stone chips - Paint



Damage 3: Front bumper: Front bumper (Sandstrahleffekt) - Stone chips - Paint



Damage 3: Front bumper: Front bumper (Sandstrahleffekt) - Stone chips - Paint



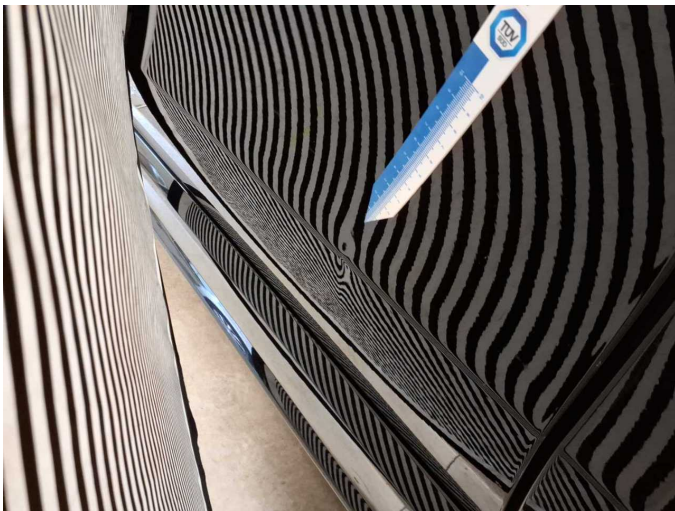
Damage 3: Front bumper: Front bumper (Sandstrahleffekt) - Stone chips - Paint



Damage 4: Door - front left side: Door - Dent / paintcoat damage - Repair and paint



Damage 4: Door - front left side: Door - Dent / paintcoat damage - Repair and paint



Damage 4: Door - front left side: Door - Dent / paintcoat damage - Repair and paint



Damage 4: Door - front left side: Door - Dent / paintcoat damage - Repair and paint



Wartungshistorie

(gemäß Auftraggeber Informationen)

Fahrgestellnummer: YV1LFH5V2P1978089

Hersteller / Modell: VOLVO VOLVO XC90 T8 AWD Recharge Ultimate Dark

Datum	KM-Stand	Beschreibung
23.12.2025	89.824	Motoröl b. Wartung; Ölfilter ern; Regelwartungsdienst; Wartung Sonstiges
30.06.2025	66.722	Dieselpartikelfilter ern; Reparatur Sonstiges; Systemtest/Eigendiagnose; Turbolader ern
06.06.2025	66.120	Systemtest/Eigendiagnose
25.03.2025	58.737	Bremsflüssigkeit; Bremsflüssigkeit ern; Luftfiltereinsatz ern; Motoröl b. Wartung; Ölfilter ern; Regelwartungsdienst; Reparatur Sonstiges; Wartung Sonstiges; Zündkerzen ern
08.05.2024	28.633	Motoröl b. Wartung; Ölfilter ern; Regelwartungsdienst; Systemtest/Eigendiagnose; Wartung Sonstiges