

Expertise

Protocol number: 45533337
Order No. / Reference: 26186876
Inspection date: 5 May 2026

Manufacturer: Volvo

Model: V60 B4 D Geartronic Momentum Pro

VIN: YV1ZWK5VDM2446025



Vehicle details

Manufacturer / Type / Model / Equipment

Volvo V60 B4 D Geartronic Momentum Pro

Vehicle Identification number YV1ZWK5VDM2446025

Mileage (Read) 85,247 km

First registration 19 Apr 2021

Number of holders 1

Power / Engine displacement 145 kw / 1,969 ccm

Fuel type / Cylinder Hybrid Diesel / E / 4

Gearbox / Number of gears Automatic / 8

Type of drive Front drive

Type of vehicle SUV

Colour / colour code Onyx Black Metallic

Doors / Seats 5 / 5

Upholstery type Cloth

Colour of upholstery Black-Anthracite

TÜV SÜD Auto Partner GmbH
Wiesenring 2
04159 Leipzig

Inspection location
Hartmann Fleet Professionals GmbH
Leerenstraße 25
29683 Bad Fallingbommel



Equipment



Standard equipment

- ABS - Anti-lock Braking System (with EBV)
- Driver and front passenger airbags with two-stage deployment system (side airbags for driver and front passenger and head/shoulder airbags (IC) for all occupants)
- Attachment system for carrier bags in the luggage compartment
- LED turn signals integrated into the exterior mirrors
- On-board computer with vehicle control functions
- City Safety (automatic emergency braking system with detection of vehicles, cyclists, pedestrians and large animals, including intersection braking assistant, emergency braking assistant for oncoming traffic and steering support during evasive maneuvers)
- Roof edge spoiler
- Black roof rails (integrated)
- Digital instrumentation: 12.3" full-graphic display (31.2 cm diagonal, high resolution) (with two variable round instruments and information display (e.g. for navigation map view))
- Insoles: Iron Ore
- Aluminum door sill plates with Volvo lettering at the front
- Electronic differential lock
- Chrome window surround
- Automatic emergency braking (emergency braking mechanism after the deployment of the airbags or seatbelt pretensioners to prevent secondary accidents)
- Transmission: 8-speed Geartronic (automatic transmission)
- rear window wiper
- Interior lighting (headliner, front reading lights, front ambient lighting, front footwell, storage compartment behind center console, glove compartment and luggage compartment)
- Keyless Drive (electronic access system)
- Child safety lock (manual, rear doors)
- Rear headrests foldable, electrically
- Stainless steel loading sill protector in the luggage compartment
- LED headlights "Thor's Hammer" (with high beam assist and integrated LED daytime running lights)
- Illuminated makeup mirror for driver and front passenger
- Front center armrest with integrated storage compartment and cup holders
- Oncoming Lane Mitigation ((Preventive protection system when crossing the center line and approaching oncoming traffic including active steering intervention towards one's own lane)
- Particulate filter: Soot particle filter for diesel engines
- Radio: Audio system High Performance Sound (170 watts of power - 10 speakers)
- Radio accessories: Apple CarPlay and Android Auto
- Radio accessories: Digital radio reception (DAB+)
- Radio accessories: Two USB-C ports on the back of the center console
- Rain sensor
- Road Edge Detection (system to protect against unintentional leaving of the roadway through steering and braking interventions)
- Front passenger airbag can be deactivated
- Electrically folding exterior mirrors
- Electrically adjustable exterior mirrors
- Heated exterior mirrors and rear window (automatic)
- Outdoor temperature display
- Hill Start Assist (HSA)
- Condensation sensor (for automatic activation of the defroster function)
- third brake light
- CleanZone air quality system (with activated carbon filter, automatic recirculation and pre-ventilation of the interior when the vehicle is unlocked)
- Colored glazing
- Connected Safety (Cloud-based warning of slippery road conditions and vehicles with hazard warning lights activated)
- Drive Mode (driving mode settings for engine, transmission, steering, brakes: Comfort, Eco, Dynamic, Individual)
- Driver Alert - Attention Warning
- Rear parking assist
- Electronic Stability Control (ESC)
- Electric windows front and rear (with auto-down and auto-up function)
- Front grille in waterfall design in black
- Luggage compartment partition net
- Cruise control system with variable speed limiter
- Front seat belt height adjustment
- Automatic tailgate (electric)
- Interior and exterior mirrors with automatic dimming function
- Intelligent driver information system (delays incoming calls or vehicle information in dangerous situations)
- ISOFIX anchors for the outer rear seats
- Keyless Start (electronic engine start system)
- Headrests (5) front and rear, (rear ones manually foldable)
- Charging box under the cargo floor
- Cargo area roller blind
- Lane Keeping Aid (LKA) - Active lane keeping assistant
- Steering wheel adjustable for height and reach
- Steering wheel: Multifunction buttons on the steering wheel
- Rear center armrest (foldable) with cup holders
- Sensus navigation system
- Emergency brake lights (brake lights flash rapidly during heavy deceleration; hazard warning lights are automatically activated at speeds below 10 km/h)
- Electric parking brake
- Parking ticket holder
- Upholstery: Textile comfort seats



- Wheels: Tire pressure monitoring system (passive) (with tire-specific pressure loss warning)
- Wheel accessories: Tire sealant (incl. 12-volt compressor - maximum speed 80 km/h)
- Seat belts (active seat belts with belt tensioner - warning tone/indicator when seat belts are not fastened (for all seats))
- Seats: Driver and front passenger seats height adjustable (electrically) (including manual tilt adjustment for the driver's seat)
- Start/Stop technology
- Power outlet (12-volt connection in the luggage compartment)
- Lashing eyes in the luggage compartment (foldable)
- Preparation for Trailer Stability Assist (TSA)
- Immobiliser
- WHIPS whiplash protection system (including immersion protection on all seats and energy-absorbing front seat cushions)
- Central locking with two remote controls and integrated emergency key (including automatic locking of the doors while driving (can be deactivated) - panic function (integrated in the remote control) - comfort opening/closing of the side windows and, if applicable, the sunroof via remote control)
- Radio: Sensus Connect infotainment system (9" touchscreen (22.9 cm diagonal) - 2 USB ports (compatible with Apple iPod/iPhone/iPad) - Bluetooth hands-free system incl. audio streaming - Digital vehicle owner's manual - Digital radio reception (DAB+) - Internet access incl. internet radio and apps (via paired smartphone) - Voice control
- Road Sign Information (RSI) (Traffic Sign Recognition)
- Run-off Road Protection (preventive protection system in case of unintentional leaving the road or impending rollovers including emergency call via Volvo On Call and door unlocking)
- Speed-sensitive power steering
- Safety braking system with disc brakes all around (internally ventilated) (automatic brake system pre-tensioning, brake assist and automatic hold function)
- Safety steering column (adaptive)
- Seats: Lumbar support (2-way electrically adjustable) for driver and front passenger seats
- Seats: Rear seats in a 40/60 split or fully foldable with pass-through function
- Power outlet (12-volt connection at the front)
- Fuel filler neck with misfuelling protection
- Volvo On Call with WiFi hotspot (including integrated modem, external antenna, and WiFi hotspot for mobile devices). Volvo On Call features: Automatic emergency call function with transmission of vehicle position and data, and alerting the Volvo On Call Service Center at the touch of a button (10-year subscription). Additionally, various convenience services are available via the smartphone app, such as Send-to-Car, trip log, and locking/unlocking the vehicle (3-year subscription, extendable upon request; includes extension of the emergency call function).

Extra equipment

- Adaptive chassis with Four-C technology
- Aluminum roof rails (integrated)
- Deletion of engine designation
- Paint finish: Metallic paint
- Package: IntelliSafe Package Pro
- Package: Lighting Package (LED fog lights - headlight cleaning system - full LED headlights "Thor's Hammer" Active High Beam with extended high beam, dynamic cornering lights, intelligent high beam assist with adaptive headlight range control and integrated LED daytime running lights - ambient lighting, extended interior lighting: multi-colored ambient lighting front/rear, exit lights front/rear, illuminated door pockets and door handles front/rear, illuminated cup holders front, footwell lighting rear, reading lights rear, work light on the tailgate.)
- Wheels: 18" 5-twin-spoke diamond-cut alloy wheels/matte black (8 J x 18 with 235/45 R 18 W tires)
- Towbar (semi-electric)
- Front and rear parking sensors
- Automatic climate control with 4-zone temperature control (individual climate control for driver, front passenger and rear passengers left and right including climate display for the rear)
- Package: Parking Assistance Package (front and rear parking aid - reversing camera)
- Package: Winter Package (front seat heating - steering wheel heating)
- Package: Winter Package Pro
- Pilot Assist (Adaptive cruise control with distance warning - Lane keeping assist up to 130 km/h - Curve Speed Assist (CSA) - Adjustment of vehicle speed before curves based on map data)
- Side and rear windows tinted (from the B-pillar back)
- Rear seat heating (outer rear seats)



Brief expert findings

Documents submitted	At the time of the inspection, the vehicle registration certificate Part 2 (title) was available, but the vehicle registration certificate Part 1 (document) was not. (Copy)
VIN comparison	The vehicle identification number (VIN) was read from the vehicle and its conformity with the submitted documents was confirmed by the undersigned during the inspection.
Inspection	The inspection conditions were sufficient for the assessment of the vehicle. No lifting equipment or pit was available for inspecting the vehicle. Therefore, inspection of the vehicle's underside was only possible to a limited extent.
Test drive	No test drive/shunting maneuver was carried out during the inspection of the vehicle.
Engine function test	An engine test run was performed.

Value reducing factors

No.	Component group	Description
1	Equipment	Tirefit filler - Expired - Replace
2	Interior	Interior - Soiled - Clean
3	Door - rear left side	Door - Scratch(es) - Paint
4	Front bumper	Front bumper - Scratch(es) - Paint
5	2nd wheel set	1 alloy rim - Scratched - Replace
6	2nd wheel set	1 alloy rim - Scratched - Replace
7	Bonnet	Bonnet (Anätzung) - Paint defect - Repair and paint
8	Roof	Roof (Anätzung) - Paint defect - Repair and paint

Wear and tear

No.	Component group	Description
1	Wing mirror - left side	Cap - Scratch(es) - No deduction
2	Rear bumper	Rear bumper - Scratch(es) - No deduction
3	Rear bumper	Rear bumper - Scratch(es) - No deduction

The vehicle shows signs of wear and tear commensurate with its age and use.

Previous damages

No.	Previous damage	Extent of damage (Net)
1	Side right, Provided by user / customer, from 30 Apr 2021	616,32 €
2	Side right, Provided by user / customer, from 5 Jan 2023	1.033,94 €
3	Rear, Side right, Provided by user / customer, from 23 Dec 2021	1.070,02 €

Repainting

No.	Repainting
1	Mudguard - right side, Side panel - rear right side, Professionally carried out, Invoice of repair done Non-existent

Paint coat thickness measurement

Mudguard - right side	187 µm	Side panel - rear right side	197 µm
-----------------------	--------	------------------------------	--------



Order/Scope of Order

An order was placed to prepare a sales report for the described vehicle. This report includes the following:

- Description of key vehicle information
- Documentation of equipment features
(Delivery by third-party service providers)
- Documentation of damage, defects, missing parts
- Documentation of prior damage, unrepaired prior damage, repainting
- A brief visual or functional inspection of the equipment details, if possible.
(Functional testing of driver assistance systems is not included in the scope of services!)
- a photographic documentation of the vehicle

Basis for the order

This product is based on the guidelines for vehicle returns and valuations published by Alphabet Fleet GmbH. The expert makes the specific findings in each individual case objectively, within the framework of the prescribed standards, based on their own expertise.

The vehicle inspection takes place in a fully assembled, unassembled state.

Damage or defects that can only be detected during disassembly/diagnostic work or through further investigation remain within the realm of prognostic risk. An increased risk exists due to concealed defects caused by fraudulent misrepresentation and which were not identifiable by the expert.

Damage or defects resulting from normal use or wear and tear of the vehicle will be accepted in accordance with the applicable standard.

There was no explicit identification or monetary consideration of the expected features within the product.

Features which, in their nature and extent, slightly exceed normal use but do not constitute unacceptable damage, will be documented and indicated as signs of wear, if applicable.

Damage or defects that, according to the applicable standard, can no longer be attributed to normal use or wear and tear are listed under "Value Reducing Factors" in the product description.

Depending on the product specification, a monetary ID can be provided. If this takes place, the costs can be 100% or pro rata depending on the vehicle's age and mileage.

Previous damages

According to available information previous damages were repaired at the vehicle. Traces of repairs, which allow conclusions about the area of repair, were not recognizable during the inspection.

Comments

-Der montierte Winterradsatz ist kein Bestandteil des Auslieferungsumfangs.



Figure 1: Diagonal front (left)



Figure 2: Diagonal front (right)



Figure 3: Diagonal rear (left)



Figure 4: Diagonal rear (right)



Figure 5: Interior - front



Figure 6: Interior - rear



Figure 7: Instrument cluster



Figure 8: Instrument panel



Figure 9: Interior 360° view



Figure 10: Cargo area

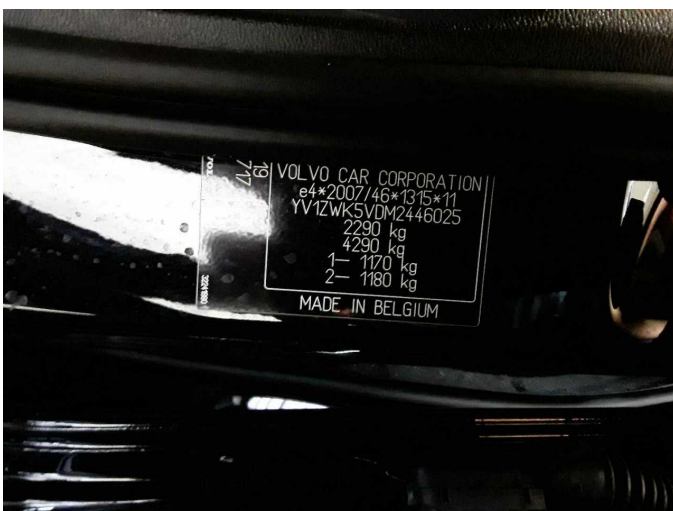


Figure 11: VIN



Figure 12: Mounted tyres



Figure 13: Documents



Figure 14: Documents

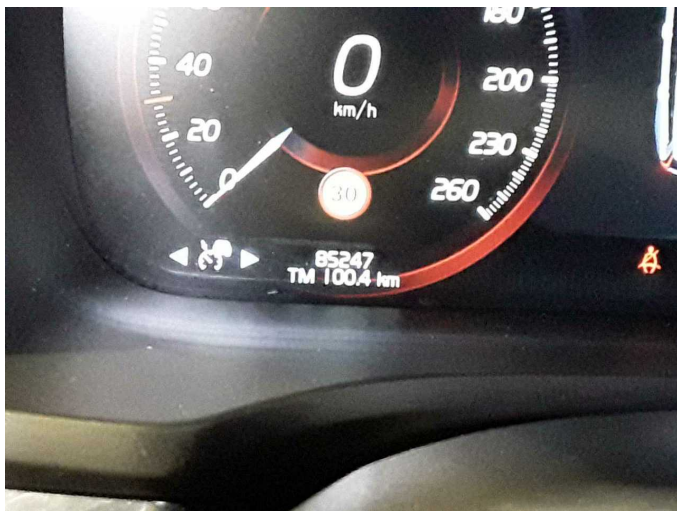


Figure 15: Documents



Figure 16: Additional tyres



Figure 17: Navigation

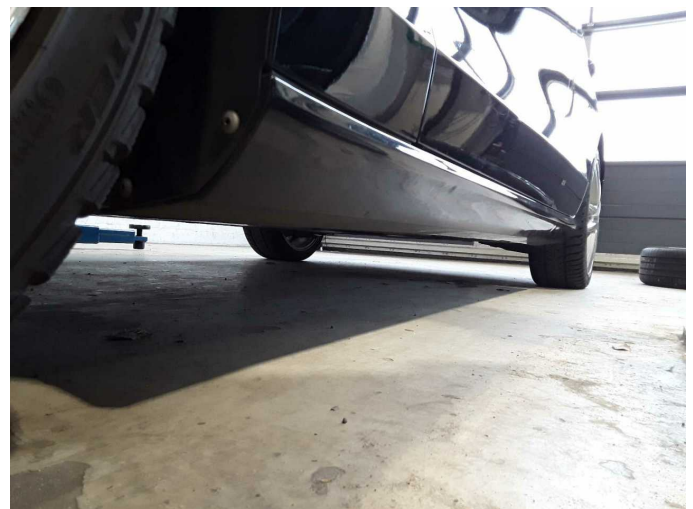


Figure 18: Misc.



Figure 19: Misc.



Figure 20: Misc.

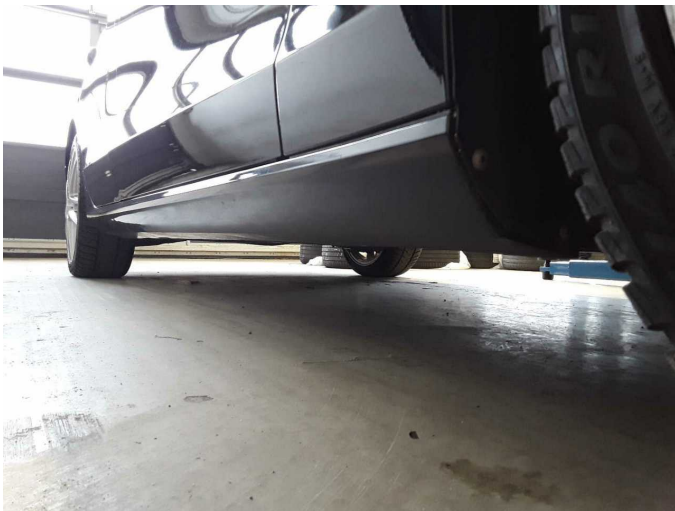


Figure 21: Misc.

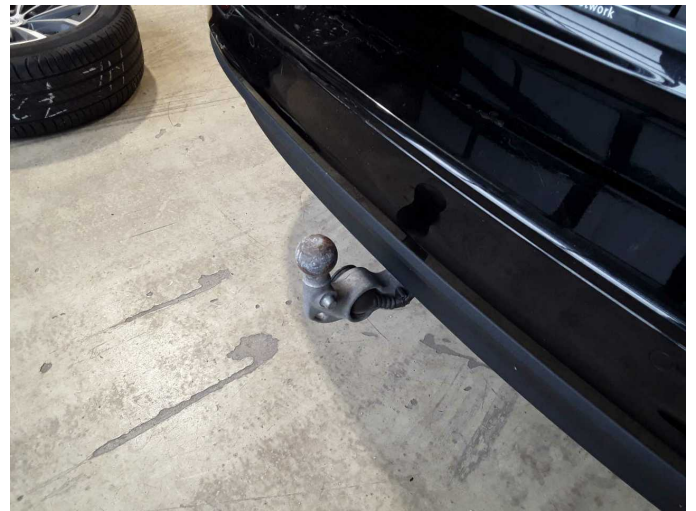


Figure 22: Misc.

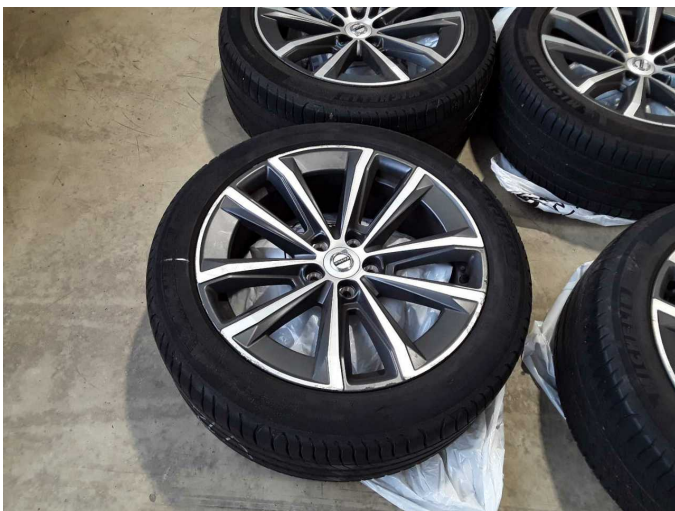


Figure 23: Misc.



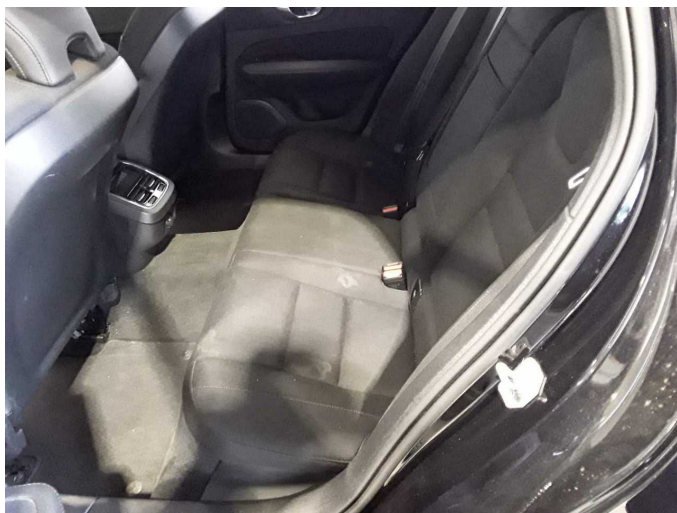
Figure 24: Misc.



Figure 25: Misc.



Damage 1: Equipment: Tirefit filler - Expired - Replace



Damage 2: Interior: Interior - Soiled - Clean



Damage 2: Interior: Interior - Soiled - Clean



Damage 2: Interior: Interior - Soiled - Clean



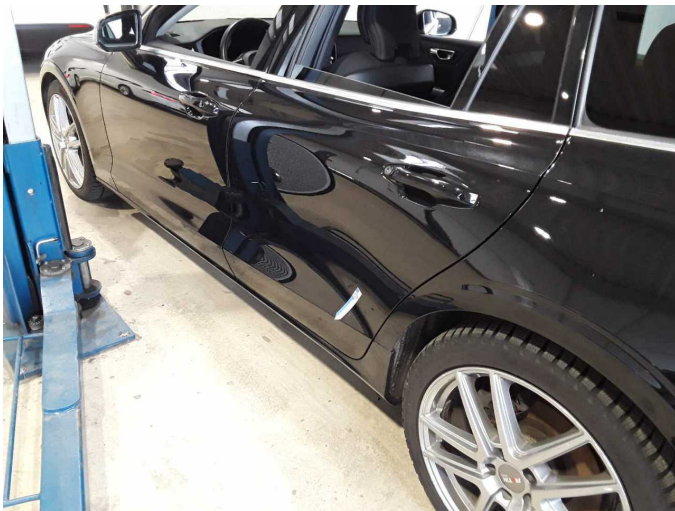
Damage 2: Interior: Interior - Soiled - Clean



Damage 2: Interior: Interior - Soiled - Clean



Damage 2: Interior: Interior - Soiled - Clean



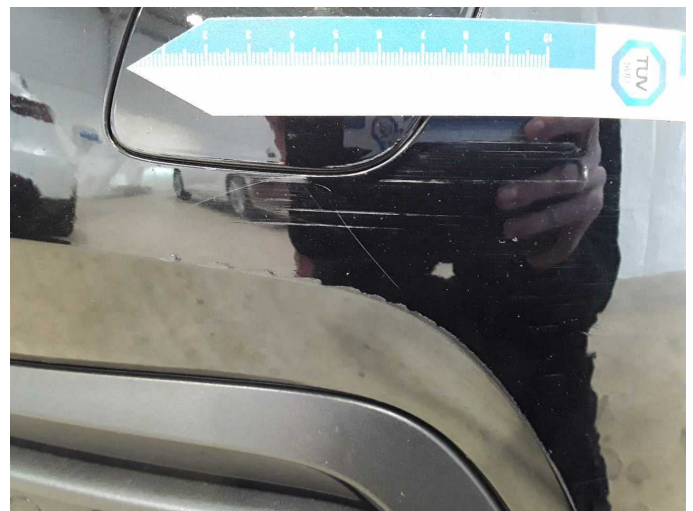
Damage 3: Door - rear left side: Door - Scratch(es) - Paint



Damage 3: Door - rear left side: Door - Scratch(es) - Paint



Damage 4: Front bumper: Front bumper - Scratch(es) - Paint



Damage 4: Front bumper: Front bumper - Scratch(es) - Paint



Damage 5: 2nd wheel set: 1 alloy rim - Scratched - Replace



Damage 5: 2nd wheel set: 1 alloy rim - Scratched - Replace



Damage 5: 2nd wheel set: 1 alloy rim - Scratched - Replace



Damage 5: 2nd wheel set: 1 alloy rim - Scratched - Replace



Damage 5: 2nd wheel set: 1 alloy rim - Scratched - Replace



Damage 6: 2nd wheel set: 1 alloy rim - Scratched - Replace



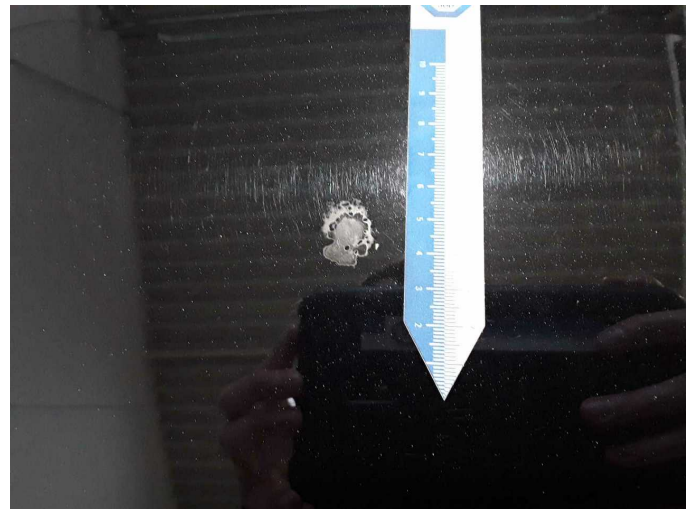
Damage 6: 2nd wheel set: 1 alloy rim - Scratched - Replace



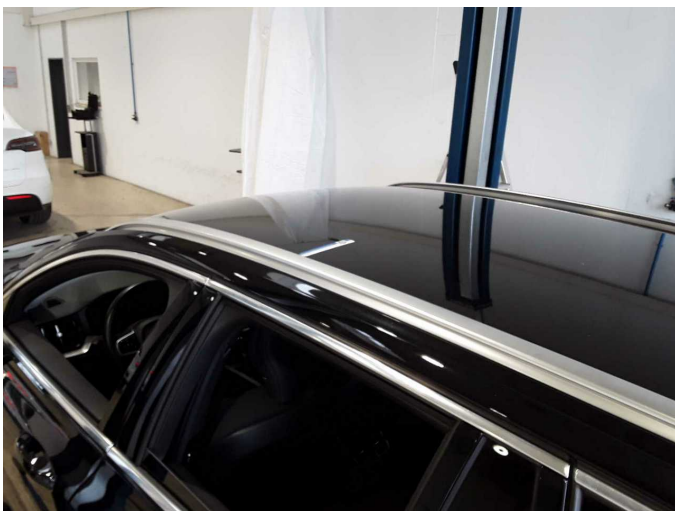
Damage 6: 2nd wheel set: 1 alloy rim - Scratched - Replace



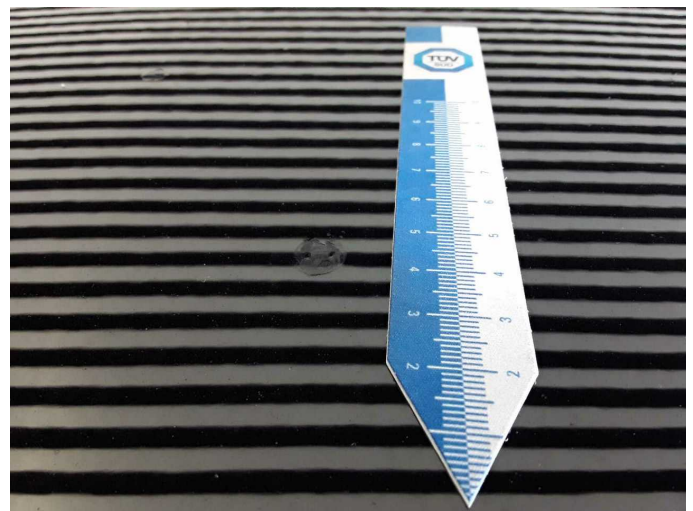
Damage 7: Bonnet: Bonnet (Anätzung) - Paint defect - Repair and paint



Damage 7: Bonnet: Bonnet (Anätzung) - Paint defect - Repair and paint



Damage 8: Roof: Roof (Anätzung) - Paint defect - Repair and paint



Damage 8: Roof: Roof (Anätzung) - Paint defect - Repair and paint



Damage 8: Roof: Roof (Anätzung) - Paint defect - Repair and paint



Repainting 1: Mudguard - right side, Side panel - rear right side



Repainting 1: Mudguard - right side, Side panel - rear right side



Repainting 1: Mudguard - right side, Side panel - rear right side



Repainting 1: Mudguard - right side, Side panel - rear right side



Wartungshistorie

(gemäß Auftraggeber Informationen)

Fahrgestellnummer: YV1ZWK5VDM2446025

Hersteller / Modell: VOLVO VOLVO V60 B4 D Geartronic Momentum Pro

Datum	KM-Stand	Beschreibung
12.02.2026	85.078	Bremsflüssigkeit; Bremsflüssigkeit ern; Motoröl b. Wartung; Ölfilter ern; Regelwartungsdienst; Wartung Sonstiges
18.02.2025	68.209	Motoröl b. Wartung; Ölfilter ern; Regelwartungsdienst; Wartung Sonstiges
03.04.2024	54.437	AU; Wartung Sonstiges
15.03.2024	53.235	Kraftstofffilter ern; Luftfiltereinsatz ern; Motoröl b. Wartung; Ölfilter ern; Regelwartungsdienst; Wartung Sonstiges
08.03.2023	32.198	Motoröl b. Wartung; Ölfilter ern; Regelwartungsdienst; Wartung Sonstiges
11.04.2022	15.874	Motoröl b. Wartung; Regelwartungsdienst