

## Expertise

Protocol number: 45490543  
Order No. / Reference: 26301865  
Inspection date: 16 May 2026

Manufacturer: Renault

Model: Trafic ENERGY dCi 120 L1H1 3,0t Komfort

VIN: VF1FL000967550751



### Vehicle details

#### Manufacturer / Type / Model / Equipment

Renault Trafic ENERGY dCi 120 L1H1 3,0t Komfort

**Vehicle Identification number** VF1FL000967550751

**Mileage (Read)** 47,607 km

**First registration** 27 Apr 2021

**Number of holders** 1

**Power / Engine displacement** 88 kw / 1,997 ccm

**Fuel type / Cylinder** Diesel / 4

**Gearbox / Number of gears** Manual / 6

**Type of drive** Front drive

**Type of vehicle** Van

**Colour / colour code** Arktis-Weiß Uni

**Doors / Seats** 4 / 3

**Upholstery type** Cloth

**Colour of upholstery** Black



## Vehicle details

<b>Maintenance booklet / proof</b>	Available / complete	<b>Next maintenance in</b>	39,700 km
<b>Last service on / at</b>	03/2026 at 47,295 km		
<b>Key is / should be</b>	2 / 2	<b>FZG documents</b>	ZB#2 (B) was available (copy), ZB#1 (S) was not available.
		<b>Letter No.</b>	GA409363
<b>Previous damage / Accident</b>	None detectable	<b>Repainting</b>	None detectable
<b>Inspection conditions</b>	sufficient	<b>Lifting equipment / pit</b>	yes
<b>Test drive</b>	Not performed	<b>Engine function test</b>	Performed
<b>Manufacturer key number/ type code number</b>	3333 / BME 00669		
<b>Emission standard</b>	EURO6;WLTP;CI;PI/CI;N1 III, N2	<b>fine dust sticker</b>	
<b>Permitted total weight</b>	2,955 kg	<b>Empty weight</b>	

## Tyres

### Mounted tyres

#	Tyre size	Type of tyre	Manufacturer	Tread depth
1)	215/65 R16 109T	All-season tyres on Steel	Continental	5mm / 5mm
2)	215/65 R16 109T	All-season tyres on Steel	Continental	6mm / 6mm

**Legend: Tread depth information for the left tire is listed first, for the right tire it is listed second on the axle in the direction of travel.**



## Equipment

### Standard equipment

- Storage compartments in the doors (driver's and passenger's door)
- Airbag: Driver's side
- Exterior mirrors, electrically adjustable and heated (with wide-angle insert)
- On-board computer
- Electronic tachometer
- Electric front windows (with one-touch function)
- Glove compartment, closed (cooled in conjunction with air conditioning)
- Headrests (3) (height adjustable)
- Paint finish: Standard
- Mobility kit (instead of spare wheel)
- Pollen filter
- Wheels: 16-inch steel rims with 205/65 R 16 tires
- Power steering
- Partition wall without windows
- Lashing eyes in the cargo area, on the lower side
- Electronic immobilizer
- Central locking with radio remote control (integrated into the key)
- ABS with EBV and brake assist (with automatic activation of the hazard warning lights during emergency braking)
- Automatic door locking after starting to drive
- Outdoor temperature display
- Turn signals in clear lens look
- Diesel particulate filter
- ESP with hill start assist, load detection and ASR
- Transmission: 6-speed manual transmission
- Rear door, opening angle 180°, without window
- Keycard Handsfree (Automatic unlocking of doors and/or tailgate upon approach - Starting at the touch of a button)
- Steering wheel adjustable in 2 ways (length, height)
- Engine: Start & Stop automatic
- Radio installation with roof antenna
- Sliding door on the right, closed
- Seats: Driver's seat "Comfort" adjustable in 3 ways (length, height, backrest tilt - with enhanced lateral support, lumbar support and center armrest)
- Heat-insulating glass

### Extra equipment

- Alarm system
- Base Renault Traffic L1 Standard 2020 floor, side
- LED headlights with daytime running lights
- Package: Mobile Office Package 1 (foldable double passenger seat with PC storage - closed partition without window with pass-through flap - wide-angle mirror)
- Tires: All-season tires
- Super Aquila seat cover
- Tablet Docking Station
- Trailer hitch
- Rear parking aid (acoustic signal)
- Package: Sound & Climate Package 1 DAB+ (front manual air conditioning - DAB+ MP3 tuner radio with integrated Bluetooth hands-free system, display, USB & AUX connection, steering wheel control satellite)
- Key: 3-button key (with separate unlocking of the driver's door)

## Brief expert findings

Documents submitted	At the time of the inspection, the vehicle registration certificate Part 2 (title) was available, but the vehicle registration certificate Part 1 (document) was not. (Copy)
VIN comparison	The vehicle identification number (VIN) was read from the vehicle and its conformity with the submitted documents was confirmed by the undersigned during the inspection.
Inspection	The inspection conditions were sufficient for the assessment of the vehicle. Lifting equipment and/or a pit were available for examining the vehicle.
Test drive	No test drive/shunting maneuver was carried out during the inspection of the vehicle.
Engine function test	An engine test run was performed.

## Value reducing factors

No.	Component group	Description
1	Roof	Aerial (Flosse statt Antenne mit Stab) - Differs from the original configuration
2	Boot lid / rear door	Rear door - right side - Dent / paintcoat damage - Smart repair
3	Bonnet	Insulation lining - Damage caused by marten / rodent - Replace



## Wear and tear

No.	Component group	Description
1	Front bumper	Front bumper (unpainted) - Scratch(es) - No deduction

The vehicle shows signs of wear and tear commensurate with its age and use.

## Order/Scope of Order

An order was placed to prepare a sales report for the described vehicle. This report includes the following:

- Description of key vehicle information
- Documentation of equipment features  
(*Delivery by third-party service providers*)
- Documentation of damage, defects, missing parts
- Documentation of prior damage, unrepaired prior damage, repainting
- A brief visual or functional inspection of the equipment details, if possible.  
(*Functional testing of driver assistance systems is not included in the scope of services!*)
- a photographic documentation of the vehicle

## Basis for the order

This product is based on the guidelines for vehicle returns and valuations of light commercial vehicles published by Alphabet Fleet Management GmbH. The expert makes the specific findings in each individual case objectively, within the framework of the prescribed standards, based on their own expertise.

The vehicle inspection takes place in a fully assembled, unassembled state.

Damage or defects that can only be detected during disassembly/diagnostic work or through further investigation remain within the realm of prognostic risk. An increased risk exists due to concealed defects caused by fraudulent misrepresentation and which were not identifiable by the expert.

Damage or defects resulting from normal use or wear and tear of the vehicle will be accepted in accordance with the applicable standard.

There was no explicit identification or monetary consideration of the expected features within the product.

Features which, in their nature and extent, slightly exceed normal use but do not constitute unacceptable damage, will be documented and indicated as signs of wear, if applicable.

Damage or defects that, according to the applicable standard, can no longer be attributed to normal use or wear and tear are listed under "Value Reducing Factors" in the product description.

Depending on the product specification, a monetary ID can be provided. If this takes place, the costs can be 100% or pro rata depending on the vehicle's age and mileage.

## Previous damages

No apparent prior damage that had been repaired could be found on the vehicle.



Figure 1: Diagonal front (left)



Figure 2: Diagonal front (right)



Figure 3: Diagonal rear (left)



Figure 4: Diagonal rear (right)



Figure 5: Interior - front



Figure 6: Interior - rear



Figure 7: Instrument cluster



Figure 8: Instrument panel



Figure 9: Interior 360° view



Figure 10: Cargo area



Figure 11: VIN

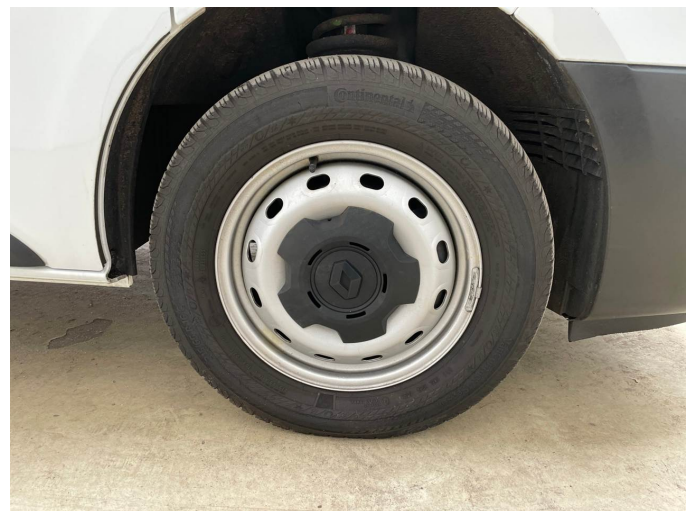


Figure 12: Mounted tyres

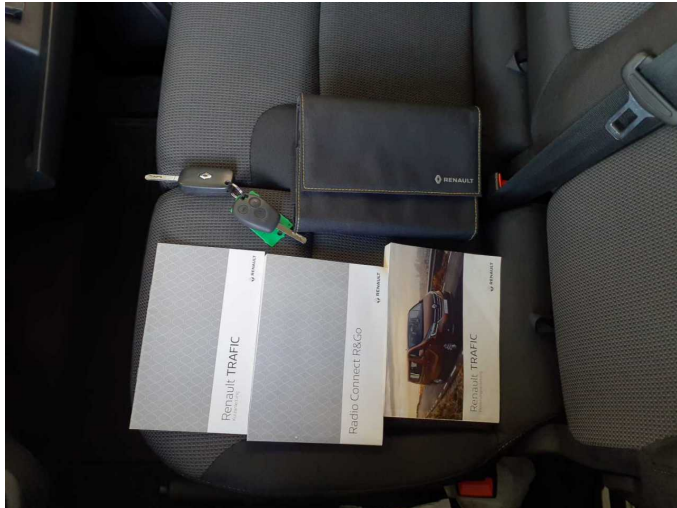


Figure 13: Documents



Figure 14: Misc.



Figure 15: Misc.



Figure 16: Misc.

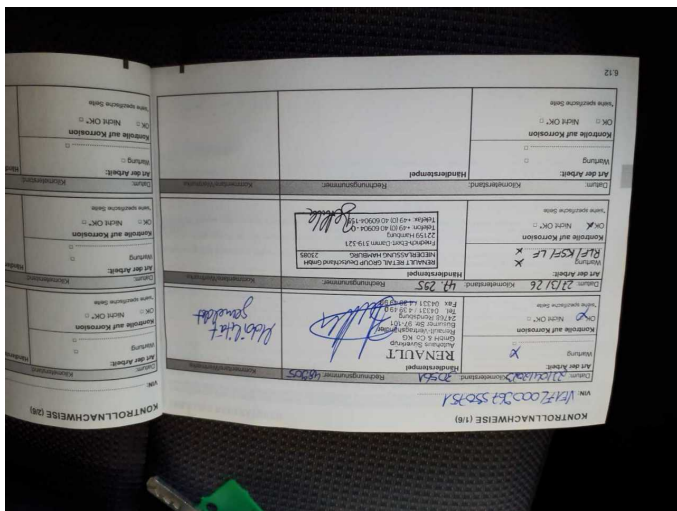


Figure 17: Misc.

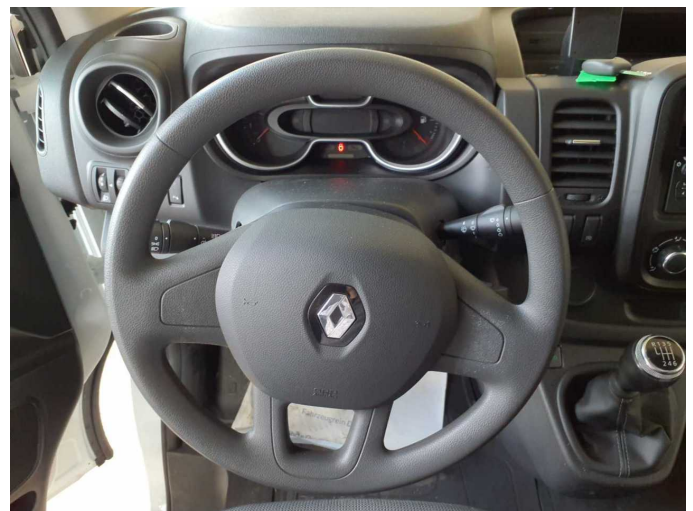


Figure 18: Misc.



Figure 19: Misc.



Figure 20: Misc.



Figure 21: Misc.



Figure 22: Misc.



Figure 23: Misc.



Figure 24: Misc.



Figure 25: Misc.



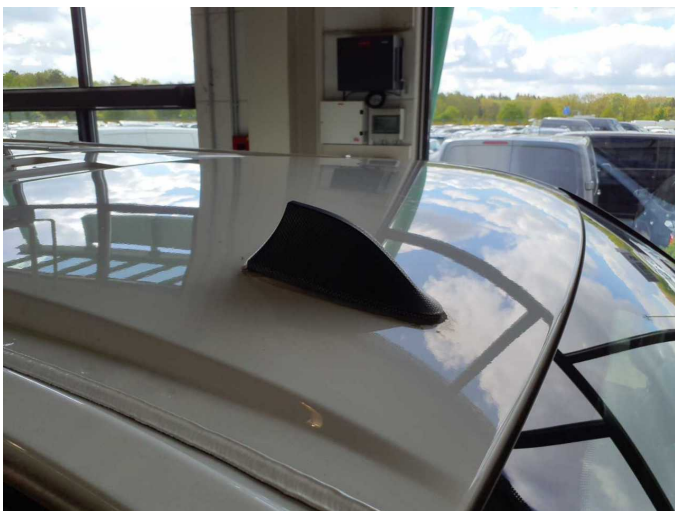
Figure 26: Misc.



Figure 27: Misc.



Figure 28: Misc.



**Damage 1:** Roof: Aerial (Flosse statt Antenne mit Stab) - Differs from the original configuration



**Damage 1:** Roof: Aerial (Flosse statt Antenne mit Stab) - Differs from the original configuration



**Damage 2:** Boot lid / rear door: Rear door - right side - Dent / paintcoat damage - Smart repair



**Damage 2:** Boot lid / rear door: Rear door - right side - Dent / paintcoat damage - Smart repair



**Damage 3:** Bonnet: Insulation lining - Damage caused by marten / rodent - Replace



**Damage 3:** Bonnet: Insulation lining - Damage caused by marten / rodent - Replace



# Wartungshistorie

(gemäß Auftraggeber Informationen)

Fahrgestellnummer: VF1FL000967550751

Hersteller / Modell: RENAULT RENAULT Trafic ENERGY dCi 120 L1H1 3,0t Komfort

Datum	KM-Stand	Beschreibung
31.03.2026	47.295	AU; Kraftstofffilter ern; Luftfiltereinsatz ern; Motoröl b. Wartung; Ölfilter ern; Regelwartungsdienst; Reparatur Sonstiges; Systemtest/Eigendiagnose; Wartung Sonstiges
01.02.2024	30.567	HU + AU; Motoröl b. Wartung; Ölfilter ern; Regelwartungsdienst; Wartung Sonstiges