

# Peugeot 308 SW '21

## Vehicle information

Make:	<b>Peugeot</b>	License:	
Gearbox:	<b>Automatic</b>	Body color:	
Model:	<b>308 SW '21</b>	VIN:	<b>VR3F4DGXTNY654828</b>
Fuel type:	<b>Plug-in hybrid</b>	Power:	<b>133 kW</b>
Version:	<b>308 SW PHEV 180 All.P.Bus.Aut</b>	First registration	<b>23/02/2023</b>
Mileage:	<b>110788 km</b>	N° of doors:	

## Damage summary

<b>Front</b>	①
<b>Left</b>	⑥
<b>Rear</b>	⑦
<b>Right</b>	⑤

## Commercial pictures





**Batterijcertificaat**  
 Datum van diagnose: 08/05/2026

96,5%  
 Status van de gezondheid (SOH)\*

**Peugeot 308 SW PHEV 180 ch**  
 VIN : YR3F4DGXTNY654828  
 Kilometerstand : 110.788 km

\*SOH berekend op basis van fabrieksgegevens, informatie om rekening mee te houden voor de fabrieksgarantie

Meer weten over [www.get-moba.com](http://www.get-moba.com)

CARA



## Options according to the inspector

Central consol F  
Hook

**Yes** GPS  
**Yes** Radio multimedia

**Yes** Headlights Xenon/LED/Laser  
**Yes** Telephone equipment

**Yes**  
**Yes**

## Damages

### Alloy rim FL

Scratch(es)  
Repair and paint (complete)  
Left



### Alloy rim FR

Scratch(es)  
Repair and paint (complete)  
Right



### Alloy rim RL

Scratch(es)  
Repair and paint (complete)  
Left



### Alloy rim RR

Scratch(es)  
Repair and paint (complete)  
Right



### Boot lid covering R

Scratch(es)  
Smart repair  
Rear



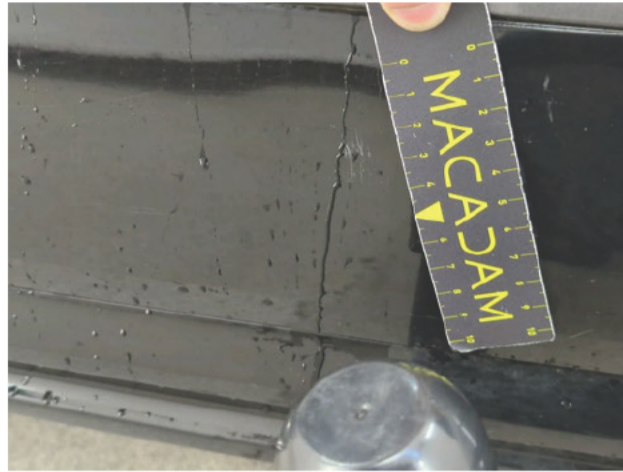
**Bumper F**

Scratch(es)  
Repair and paint (complete)  
Front



**Bumper moulding R**

Scratch(es)  
Replace and paint  
Rear



**Bumper R**

Scratch(es)  
Repair and paint (complete)  
Rear



**Charging cable (normal)**

Missing  
Replace  
Rear



**Door FL**

Scratch(es)  
Repair and paint (complete)  
Left



**Door RL**

Scratch(es)  
Repair and paint (complete)  
Left



**Internal boot lining L**

Scratch(es)  
Smart repair  
Rear



**Internal boot lining R**

Scratch(es)  
Smart repair  
Rear



**Outer door handle RR**

Scratch(es)  
Replace and paint  
Right



**Outer sill R**

Scratch(es)  
Repair and paint (complete)  
Right



**Tailgate / Boot**

Deformed / Strained  
Repair and paint (complete)  
Rear



**Wing FL**

Chemical polution  
Repair and paint (complete)  
Left



**Wing RL**

Scratch(es)  
Repair and paint (complete)  
Left



**Wing RR**

Scratch(es)  
Repair and paint (complete)  
Right



## Tyres

### Front Left

Summer

225/45/17/94/V

Vredestein

6.1 mm

### Front Right

Summer

225/45/17/94/V

Vredestein

5.9 mm

### Rear Left

Summer

225/45/17/94/V

Vredestein

7.2 mm

### Rear Right

Summer

225/45/17/94/V

Vredestein

3.5 mm

## Checks

CO2 Emission	<b>24</b> Customer data reset (contacts, e-mails, messages)	<b>Yes</b>
Digital maintenance	<b>N/A</b> GPS storage	<b>Yes</b>
Luggage cover	<b>Yes</b> Number head rests	<b>5</b>
Number of charging cables (normal)	<b>0</b> Number of charging cables (rapid charge)	<b>1</b>
Number of keys total	<b>2</b> Service book	<b>N/A</b>
User's manual	<b>Yes</b>	

### Information on the content and the scope of the inspection report:

- The assessment is based on the sales standards specified by the customer.
- Acceptable usage damages according to the sales standards are not always documented in this status report.
- The specified repair methods and/or resulting repair times have been determined, taking into account modern industrial repair methods.
- The purchasing dealer should assess individual repair costs.
- The inspection was carried out in a non disassembly condition. Macadam cannot be held responsible for any missing information. For further information, please contact the seller.