

Expertise

Protocol number: 44775061
 Order No. / Reference: 26172336
 Inspection date: 27 Mar 2026

Manufacturer: Mercedes-Benz

Model: C 220 d T 9G-TRONIC Avantgarde

VIN: W1KAH0EB3PF070810



ALPHABET



ALPHABET

Vehicle details

Manufacturer / Type / Model / Equipment

Mercedes-Benz C 220 d T 9G-TRONIC Avantgarde

Vehicle Identification number W1KAH0EB3PF070810

Mileage (Read) 71,285 km

First registration 20 Oct 2022

Number of holders 1

Next periodical technical inspection 10/2027

(Report on hand)

Power / Engine displacement 147 kw / 1,993 ccm

Fuel type / Cylinder Hybrid Diesel / E / 4

Gearbox / Number of gears Automatic / 9

Type of drive Rear drive

Type of vehicle Station wagon

Colour / colour code Selenitgrau Metallic

Doors / Seats 5 / 5

Upholstery type Cloth / leather combination

Colour of upholstery Black-Grey

Vehicle with smoke odor no



Vehicle details

Maintenance booklet / proof	digital evidence / incomplete	Next maintenance in	-42 Tag(e)
Last service on / at	10/2024 at 55,672 km		
Key is / should be	2 / 2	FZG documents	ZB#2 (B) was available (copy), ZB#1 (S) was not available.
		Letter No.	GJ511646
Previous damage / Accident	Detectable	Repainting	None detectable
Inspection conditions	sufficient	Lifting equipment / pit	yes
Test drive	short drive on the company premises	Engine function test	Performed
Manufacturer key number/ type code number	2222 / AYH 00193		
Emission standard	EURO6;WLTP;AP;PI/CI; M, N1 I	fine dust sticker	
Permitted total weight	2,400 kg	Empty weight	

Tyres

Mounted tyres				
#	Tyre size	Type of tyre	Manufacturer	Tread depth
1)	225/45 R18 95H	Winter tyres on Light alloy	Goodyear	6mm / 6mm
2)	225/45 R18 95H	Winter tyres on Light alloy	Goodyear	5mm / 5mm

Additional tyres				
#	Tyre size	Type of tyre	Manufacturer	Tread depth
1)	225/50 R17 94Y	Summer tyres on Light alloy	Goodyear	5mm / 5mm
2)	225/50 R17 94Y	Summer tyres on Light alloy	Pirelli	6mm / 6mm

Replacement				
Typ	Tyre size	Type of tyre	Manufacturer	Tread depth
	Tirefit	Expiration date 09/2027		

Legend: Tread depth for tires on the left is in the first place, for tires on the right is in the second place on the axle in the direction of travel



Equipment

Standard equipment

- Airbag for driver and front passenger
- Airbag: Center airbag
- Airbag: Windowbag for driver and front passenger
- Left and right exterior mirrors are heated and electrically adjustable
- Roof rails in polished aluminum
- Double cup holder at the front
- EASY-PACK tailgate
- Electronic Stability Program (ESP)
- Velour floor mats
- Transmission: Automatic 9-speed, 9G-TRONIC
- Rear bumper in body color
- Interior headliner fabric crystal grey
- KEYLESS-GO start function
- Rear headrests (3)
- Load compartment cover including EASY-PACK safety net
- Steering wheel: Multifunction sports steering wheel in leather
- Package: Storage
- Package: Interior lighting package
- Radio: Extended MBUX functions
- Radio accessories: Digital radio (DAB)
- Radio accessories: Central display
- Tire pressure monitoring (TPMS)
- Windscreen wipers with rain sensor
- Seats: Rear seat backrests foldable
- Cruise control
- Electronic immobilizer
- Decorative elements in diamond pattern, silver-grey

Extra equipment

- Ambient lighting with 64 light colors (with directly illuminated light lines.)
- Paint finish: Metallic
- Mercedes-Benz all-weather mats
- Center console diamond pattern silver grey
- Package: Advanced Comfort Package (Heated seats for driver and front passenger - Seat Comfort Package: - Numerous electric and manual adjustment options for the front seats to adapt to the specific body and comfort requirements of the driver and front passenger - Electro-pneumatic 4-way lumbar support and lateral support adjustment with control element on the seat - Electric seat cushion tilt adjustment - Electric height adjustment - Electric backrest adjustment - Electric seat cushion depth adjustment - Mechanical longitudinal adjustment - Mechanical headrest adjustment)

- Airbag: Automatic passenger airbag deactivation
- Airbag: Sidebag for driver and front passenger
- Ambient lighting with 64 light colors
- Basic services
- Brake assist, active
- Diesel particulate filter
- DYNAMIC SELECT
- ECO start-stop function
- 4-way electric window lifter
- Speed Limit Assistant
- rear window wiper
- Heated rear window
- ISOFIX child seat attachment with Top Tether in the rear
- Mechanical child safety lock for the rear doors
- Front headrests
- LED high-performance headlights
- Mercedes-Benz emergency call system
- Center console in high-gloss black
- Package: AVANTGARDE Exterior
- Upholstery: ARTICO leatherette/fabric
- Radio: MBUX
- Radio accessories: Communication module (LTE) for the use of Mercedes me connect services
- Remote Services Plus
- Power steering
- Lane Keeping Assist, active
- High-visibility vest for drivers
- Central locking with remote control

- THERMATIC automatic climate control with 2 climate zones (control via the central display or the climate control unit in the center console; sensor system for detecting, for example, indoor/outdoor temperature, sunlight, humidity, and dew point; automatic recirculation (only in conjunction with navigation system); ventilation system consisting of: 3 center vents and 2 side vents; fine dust activated carbon filter for filtering dust, soot, and pollen; dew point sensor; residual heat function for efficient use of engine waste heat)
- Package: Business (for Avantgarde Exterior (P15) or AMG Line Exterior (P31)) (Mirror Package: Electrically folding exterior mirrors, automatic dimming function, ambient lighting - with projection of the Mercedes-Benz logo - Advanced Comfort Package: Heated seats for driver and front passenger, 4-way lumbar support, Seat Comfort Package - Parking Package: Parking package with rearview camera - Infotainment Package: MBUX Navigation Premium, Traffic Sign Assistant, Smartphone Integration - Fuel tank with larger capacity)



- Package: Infotainment package (MBUX Navigation Premium (hard drive navigation, pre-installation for Live Traffic Information) Traffic Sign Assistant Smartphone Integration (connects the mobile phone wirelessly to the multimedia system via Apple CarPlay and Android Auto))
- Package: Parking (12 ultrasonic sensors - reversing camera - Active Parking Assist with PARKTRONIC: detects free parking spaces, assisted parking, visual and acoustic warning, display of camera and ultrasonic data in the media display - Cross traffic warning: can provide visual and acoustic warnings when reversing out of a parking space and, if necessary, automatically initiate emergency braking - Reverse maneuvering brake: can trigger a braking process - Drive-away assist)
- Seats: Comfort seats
- Package: Light (Adaptive Highbeam Assist - automatic switching of the high beams, camera on the inside of the windshield, detects oncoming and preceding illuminated vehicles, activated by pressing the steering wheel control lever to the high beam position)
- Wheels: Summer complete wheels fitted ex works
- Wheels: Winter complete set of wheels M+S 4x 45.7 cm (18") multi-spoke alloy wheels (black painted and polished with 225/45 R 18 on 7.5 J x 18 ET 40)
- Sunroof: Electric panoramic sunroof
- TIREFIT with tire inflation compressor

Brief expert findings

Documents submitted	At the time of the inspection, the vehicle registration certificate Part 2 (title) was available, but the vehicle registration certificate Part 1 (document) was not. (Copy)
VIN comparison	The vehicle identification number (VIN) was read from the vehicle and its conformity with the submitted documents was confirmed by the undersigned during the inspection.
Inspection	The inspection conditions were sufficient for the assessment of the vehicle. Lifting equipment and/or a pit were available for examining the vehicle.
Test drive	A short maneuvering and shunting exercise was carried out on the company premises.
Engine function test	An engine test run was performed.

Value reducing factors

No.	Component group	Description
1	Misc.	Inspection / maintenance (Unvollständig, Inspektion/Motoröl Service fällig) - No evidence - No deduction
2	Side panel - rear left side	Side panel - Scratch(es) - Cover / polish
3	Door - rear left side	Door handle - outside - Scratch(es) - Smart repair
4	Door - rear left side	Door - Dent / paintcoat damage - Smart repair
5	Body	B-pillar - left side - Dent / paintcoat damage - Smart repair
6	Side panel - rear right side	Sill - Dent / paintcoat damage - Smart repair
7	Wheel / tyres	Alloy rim - front left side - Scratched - Loss in value
8	Misc.	Inspection / maintenance - Due - Perform
9	Boot lid / rear door	Boot lid (Ca. 8x) - dent(s) - Repair and paint
10	Front bumper	Front bumper - Scratched - Repair and paint

Wear and tear

No.	Component group	Description
1	Body	Underbody panelling - Scratched - No deduction
2	Bonnet	Bonnet - Stone chips - No deduction

The vehicle shows signs of wear and tear commensurate with its age and use.



Previous damages

No.	Previous damage	Extent of damage (Net)
1	Rear, Provided by user / customer, from 12 Dec 2023	2.252,79 €

Order/Scope of Order

An order was placed to prepare a sales report for the described vehicle. This report includes the following:

- Description of key vehicle information
- Documentation of equipment features
(Delivery by third-party service providers)
- Documentation of damage, defects, missing parts
- Documentation of prior damage, unrepaired prior damage, repainting
- A brief visual or functional inspection of the equipment details, if possible.
(Functional tests of driver assistance systems are not included in the scope of services!)
- a photographic documentation of the vehicle

Basis for the order

This product is based on the Alphabet Fuhrpark GmbH guidelines for vehicle returns and valuations. The expert makes the explicit findings in each individual case objectively within the framework of the specified standards based on his or her own expertise.

The vehicle inspection takes place in a fully assembled, unassembled state.

Damage or defects that can only be detected during disassembly/diagnostic work or through further investigation remain within the realm of prognostic risk. An increased risk exists due to concealed defects caused by fraudulent misrepresentation and which were not identifiable by the expert.

Damage or defects resulting from normal use or wear and tear of the vehicle will be accepted in accordance with the applicable standard.

There was no explicit identification or monetary consideration of the expected features within the product.

Features which, in their nature and extent, slightly exceed normal use but do not constitute unacceptable damage, will be documented and indicated as signs of wear, if applicable.

Damage or defects that, according to the applicable standard, can no longer be attributed to normal use or wear and tear are listed under "Value Reducing Factors" in the product description.

Depending on the product specification, a monetary ID can be provided. If this takes place, the costs can be 100% d or pro rata depending on the vehicle's age and mileage.

Previous damages

According to available information previous damages were repaired at the vehicle. Traces of repairs, which allow conclusions about the area of repair, were not recognizable during the inspection.



Figure 1: Diagonal front (left)



Figure 2: Diagonal front (right)



Figure 3: Diagonal rear (left)



Figure 4: Diagonal rear (right)



Figure 5: Interior - front

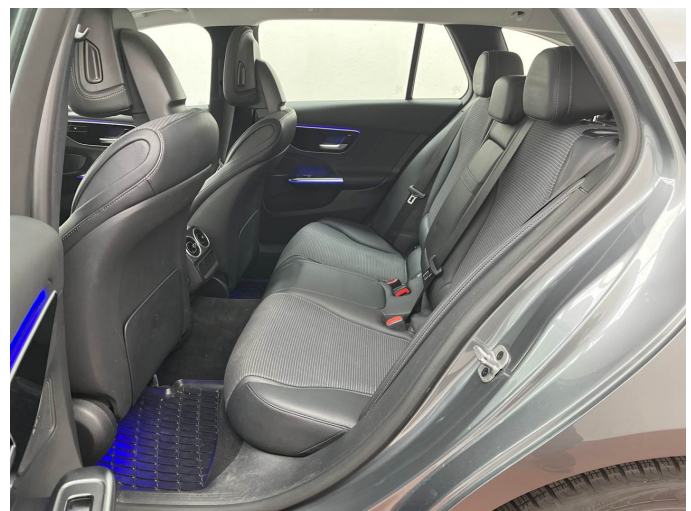


Figure 6: Interior - rear



Figure 7: Instrument cluster



Figure 8: Instrument panel



Figure 9: Interior 360° view



Figure 10: Cargo area



Figure 11: VIN



Figure 12: Mounted tyres



Figure 13: Documents

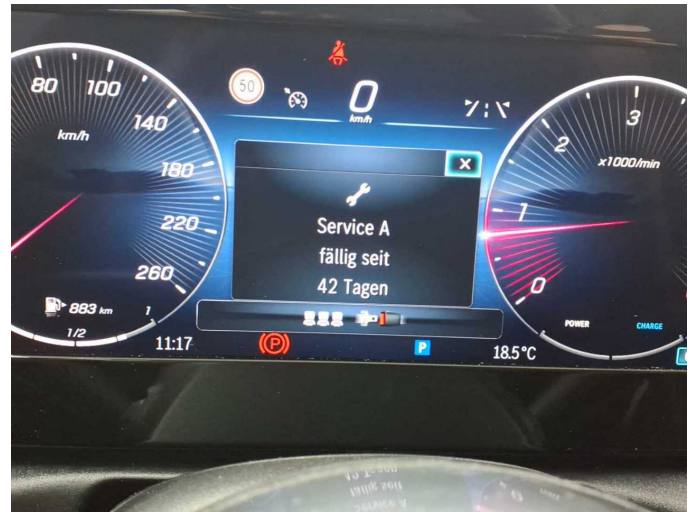


Figure 14: Documents



Figure 15: Documents



Figure 16: Additional tyres



Figure 17: Navigation



Figure 18: Misc.



Figure 19: Misc.



Figure 20: Misc.



Figure 21: Misc.



Figure 22: Misc.



Figure 23: Misc.



Figure 24: Misc.



Figure 25: Misc.



Figure 26: Misc.



Figure 27: Misc.



Figure 28: Misc.



Figure 29: Misc.



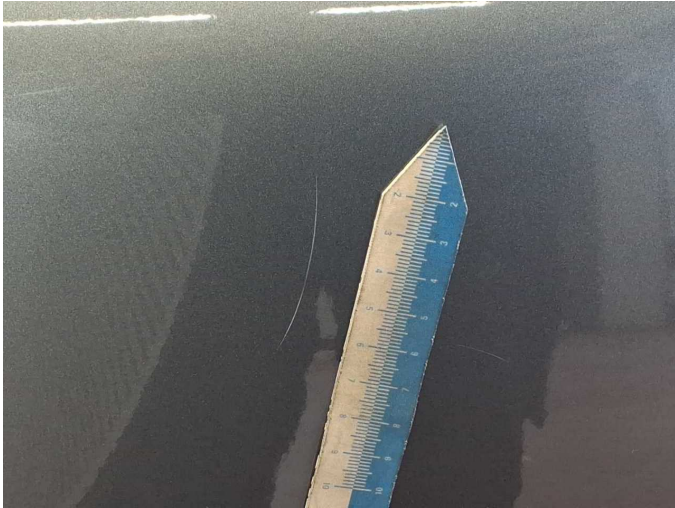
Figure 30: Misc.



Figure 31: Misc.



Damage 2: Side panel - rear left side: Side panel - Scratch(es) - Cover / polish



Damage 2: Side panel - rear left side: Side panel - Scratch(es) - Cover / polish



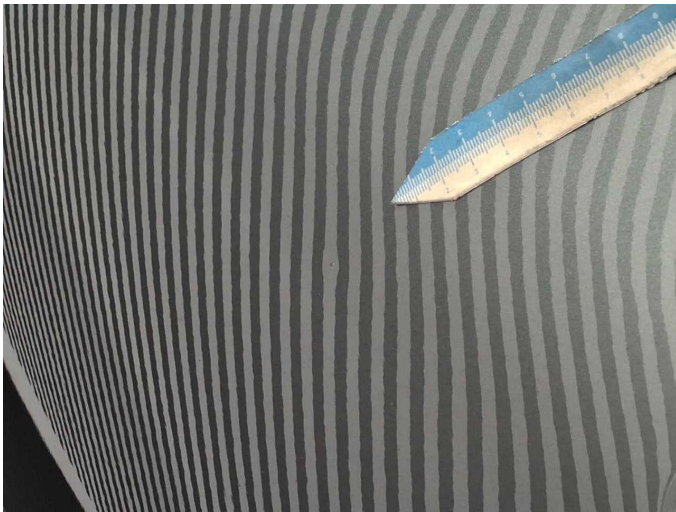
Damage 3: Door - rear left side: Door handle - outside - Scratch(es) - Smart repair



Damage 3: Door - rear left side: Door handle - outside - Scratch(es) - Smart repair



Damage 4: Door - rear left side: Door - Dent / paintcoat damage - Smart repair



Damage 4: Door - rear left side: Door - Dent / paintcoat damage - Smart repair



Damage 4: Door - rear left side: Door - Dent / paintcoat damage - Smart repair



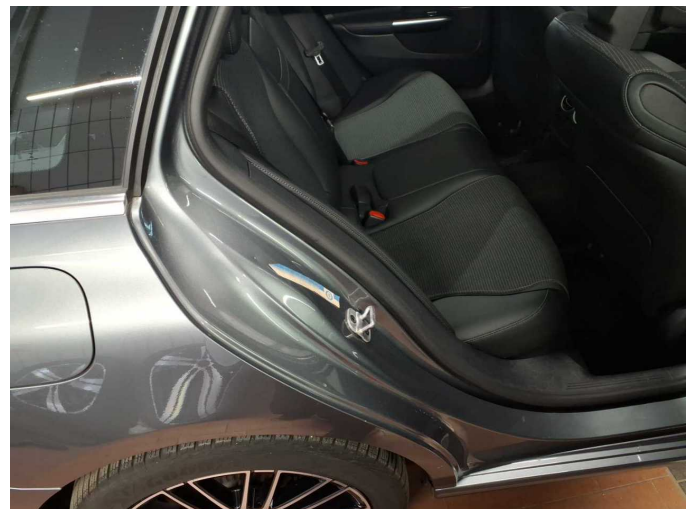
Damage 5: Body: B-pillar - left side - Dent / paintcoat damage - Smart repair



Damage 5: Body: B-pillar - left side - Dent / paintcoat damage - Smart repair



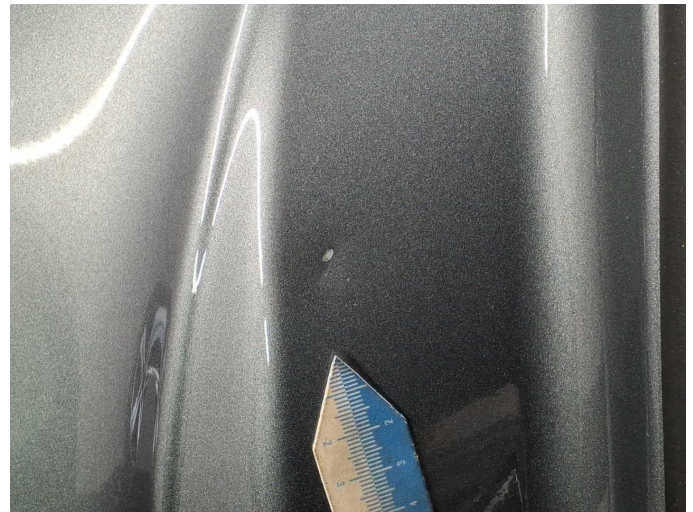
Damage 5: Body: B-pillar - left side - Dent / paintcoat damage - Smart repair



Damage 6: Side panel - rear right side: Sill - Dent / paintcoat damage - Smart repair



Damage 6: Side panel - rear right side: Sill - Dent / paintcoat damage - Smart repair



Damage 6: Side panel - rear right side: Sill - Dent / paintcoat damage - Smart repair



Damage 7: Wheel / tyres: Alloy rim - front left side - Scratched - Loss in value



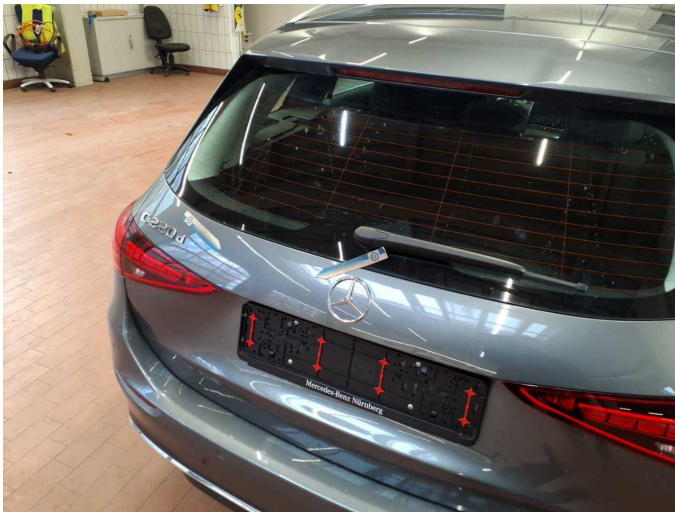
Damage 7: Wheel / tyres: Alloy rim - front left side - Scratched - Loss in value



Damage 7: Wheel / tyres: Alloy rim - front left side - Scratched - Loss in value



Damage 8: Misc.: Inspection / maintenance - Due - Perform



Damage 9: Boot lid / rear door: Boot lid (Ca. 8x) - dent(s) - Repair and paint



Damage 9: Boot lid / rear door: Boot lid (Ca. 8x) - dent(s) - Repair and paint



Damage 9: Boot lid / rear door: Boot lid (Ca. 8x) - dent(s) - Repair and paint



Damage 9: Boot lid / rear door: Boot lid (Ca. 8x) - dent(s) - Repair and paint



Damage 10: Front bumper: Front bumper - Scratched - Repair and paint



Damage 10: Front bumper: Front bumper - Scratched - Repair and paint



Damage 10: Front bumper: Front bumper - Scratched - Repair and paint



Wear and tear 1: Body: Underbody panelling - Scratched - No deduction



Wear and tear 1: Body: Underbody panelling - Scratched - No deduction



Wear and tear 1: Body: Underbody panelling - Scratched - No deduction



Wear and tear 1: Body: Underbody panelling - Scratched - No deduction



Wartungshistorie

(gemäß Auftraggeber Informationen)

Fahrgestellnummer: W1KAH0EB3PF070810

Hersteller / Modell: MERCEDES-BENZ MERCEDES-BENZ C 220 d T 9G-TRONIC
Avantgarde

Datum	KM-Stand	Beschreibung
21.10.2025	69.427	HU + AU
04.10.2024	55.672	Regelwartungsdienst
23.10.2023	29.005	Regelwartungsdienst