

Expertise

Protocol number: 46321034
Order No. / Reference: 26566532
Inspection date: 1 Jul 2026

Manufacturer: Volvo

Model: XC90 T8 AWD Recharge Geartronic RDesign Edition

VIN: YV1LFH5VDN1832818



Vehicle details

Manufacturer / Type / Model / Equipment

Volvo XC90 T8 AWD Recharge Geartronic RDesign Edition

Vehicle Identification number YV1LFH5VDN1832818

Mileage (Read) 130,968 km

First registration 16 Feb 2022

Number of holders 1

Power / Engine displacement 228 kw / 1,969 ccm

Fuel type / Cylinder Hybr.B/E ext.auf1 / 4

Gearbox / Number of gears Automatic / 8

Type of drive All-wheel drive

Type of vehicle SUV

Colour / colour code Black Metallic

Doors / Seats 5 / 7

Upholstery type Leather

Colour of upholstery Black



Vehicle details			
Maintenance booklet / proof	digital proof / complete	Next maintenance in	186 Tag(e)
Last service on / at	01/2026 at 118,281		
Key is / should be	2 / 2	FZG documents	ZB#2 (B) was available (copy), ZB#1 (S) was not available.
		Letter No.	GF845839
Previous damage / Accident	None detectable	Repainting	None detectable
Inspection conditions	sufficient	Lifting equipment / pit	yes
Test drive	Not performed	Engine function test	Performed
Manufacturer key number/ type code number	9101 / BUL 00004		
Emission standard	EURO6;WLTP;AP;PI/CI; M, N1 I	fine dust sticker	
Permitted total weight	2,950 kg	Empty weight	

Tyres

Mounted tyres				
#	Tyre size	Type of tyre	Manufacturer	Tread depth
1)	275/45 R20 110V	Summer tyres on Light alloy	Continental	3mm / 3mm
2)	275/45 R20 110V	Summer tyres on Light alloy	Continental	4mm / 4mm
Additional tyres				
#	Tyre size	Type of tyre	Manufacturer	Tread depth
1)	235/55 R19 105V	Winter tyres on Light alloy	Continental	6mm / 6mm
2)	235/55 R19 105V	Winter tyres on Light alloy	Continental	3mm / 3mm
Replacement				
Typ	Tyre size	Type of tyre	Manufacturer	Tread depth
	Tirefit	Expiration date 01/2026		

Legend: Tread depth information for the left tire is listed first, for the right tire it is listed second on the axle in the direction of travel.

TÜV SÜD Auto Partner GmbH
Wiesenring 2
04159 Leipzig

Inspection location
Hartmann Fleet Professionals GmbH
Leerenstraße 25
29683 Bad Fallingbommel



Equipment



Standard equipment

- ABS - Anti-lock Braking System (with EBV)
- Airbags (driver and front passenger airbags with two-stage deployment system - driver's knee airbag - driver and front passenger side airbags - head/shoulder airbags (IC) for all occupants)
- Aluminum door sill plates with Recharge lettering, front (illuminated) and rear
- Aluminum insert, metal mesh
- Aluminum loading sill protector in the luggage compartment
- Applications on the side windows in high-gloss black
- Armrests with integrated storage compartment and cup holders for the 3rd row of seats (left and right)
- Attachment system for carrier bags in the luggage compartment
- Automatic climate control with 4-zone temperature control (Individual climate control for driver, front passenger and rear passengers left and right (2nd row of seats) including climate display for the 2nd row of seats)
- Automatic tailgate (electric)
- Bottle holder in the luggage compartment
- Charging cable Schuko/Type 2 (Mode 2), 4.5 m length (for connection to a standard 230-volt household socket)
- CleanZone air quality system with activated carbon filter (automatic recirculation and pre-ventilation of the interior when the vehicle is unlocked)
- Connected Safety (Cloud-based warning of slippery road conditions and vehicles with hazard warning lights activated)
- Dashboard and door trim in leather look with contrasting stitching
- Drive Mode (driving mode settings for engine, transmission, steering, brakes and suspension)
- Electric windows front and rear (with auto-down and auto-up function)
- Electrically folding exterior mirrors
- Emergency brake lights (brake lights flash rapidly during heavy deceleration; hazard warning lights are automatically activated at speeds below 10 km/h)
- First aid kit and warning triangle
- Fog sensor for automatic activation of the defroster function
- Front center armrest including cup holder
- Heated exterior mirrors and rear window (automatic)
- Heated rear window
- Intelligent driver information system (delays incoming calls or vehicle information in dangerous situations)
- IntelliSafe Assistant (Pilot Assist - Adaptive cruise control with distance warning and lane keeping assist up to speeds of 130 km/h - Curve Speed Assist (CSA) - Adjustment of vehicle speed before curves based on map data - Traffic Jam Assist Stop & Go - Lane Keeping Aid (LKA) - Active lane keeping assist)
- Interior and exterior mirrors automatically dimming
- ISOFIX mounting for the outer rear seats
- Active safety belts with belt tensioners (pre-activation of the belt tensioners in dangerous situations and belt force limiter)
- Air conditioning for the 3rd row of seats
- All-wheel drive (AWD) (depending on the driving mode)
- Ambient lighting (Extended interior lighting with: - Ambient lighting (multicoloured) front and rear - Illuminated door pockets and door handles front and rear - Ambient lighting on the doors front and rear - Door sills with illuminated Recharge lettering - Exit lights in the rear doors - Ambient lighting on the dashboard top panel - Rear footwell lighting - Work light on the tailgate)
- Anthracite headliner
- Automatic emergency braking (emergency braking mechanism after the deployment of the airbags or seatbelt pretensioners to prevent secondary accidents)
- Brake energy recuperation
- Cargo area roller blind (semi-automatic)
- Central locking with two remote controls and integrated emergency key (including automatic locking of the glove compartment and doors while driving (can be deactivated), panic function (integrated in the remote control), comfort opening/closing of the side windows and, if applicable, sunroof via remote control, luggage compartment lid release via remote control or from the driver's seat)
- Child safety lock (manual for the rear doors)
- City Safety (automatic emergency braking system with detection of vehicles, cyclists, pedestrians and large animals, including intersection braking assistant, emergency braking assistant for oncoming traffic and steering support during evasive maneuvers)
- Cruise control system with variable speed limiter
- Digital instrumentation (12.3" full graphic display (31.2 cm diagonal) with two variable round instruments and information display (e.g. for navigation map view))
- Driver Alert - Attention Warning
- Electric parking brake
- Electrically adjustable exterior mirrors
- Electronic differential lock
- Electronic stability control
- Full LED headlights "Thor's Hammer" ACTIVE HIGH BEAM (with extended high beam, dynamic cornering light, intelligent high beam assistant with adaptive headlight range control and integrated LED daytime running lights)
- Glazing: Colored glazing
- Headlight cleaning system
- Headrests (7)
- Headrests of the 2nd row of seats can be folded down (electrically)
- Heated windshield washer nozzles
- Hill Descent Control (HDC)
- Hill Start Assist (HSA)
- Illuminated makeup mirror for driver and front passenger
- Immobiliser



- Keyless Drive (electronic access system with sensor-controlled tailgate, waterproof micro key and illuminated door handles and puddle lights)
- Keyless Start (electronic engine start system)
- Lashing eyes in the luggage compartment (foldable)
- Luggage compartment partition net
- On-board computer (with vehicle control functions)
- Oncoming Lane Mitigation (preventive protection system when crossing the center line and approaching oncoming traffic including active steering intervention towards one's own lane)
- Passenger side airbag can be deactivated
- Radio accessories: Smartphone integration Apple CarPlay and Android Auto (integration of Apple iPhones and Android smartphones into the Sensus operating system)
- Radio accessories: Two USB-C ports on the back of the center console
- Rain sensor with automatic light function
- Rear seat backrests can be folded down in a 60/40 split or completely.
- Road Sign Information (RSI) - Traffic Sign Recognition
- Roof spoiler
- Run-off Road Protection (preventive protection system in case of unintentional road leaving or impending rollovers including pre-activation of the seat belt tensioners, deactivation of the battery (plug-in hybrid only), emergency call via Volvo On Call and door unlocking)
- Safety braking system with disc brakes all around (internally ventilated) (automatic brake system pre-tensioning, brake assist and automatic hold function)
- Seats: Driver and front passenger seats height adjustable (electrically) (including manual tilt adjustment for the driver's seat)
- Seats: Heated front seats
- Seats: Third row of seats (7-seater) (manually adjustable and retractable with longitudinal adjustment (120 mm) for the 2nd row of seats and easy-entry function)
- Speed-sensitive power steering
- Sport exterior mirrors in high-gloss black
- Sport front grille with horizontal struts and surround in high-gloss black
- Steering wheel: Sport leather steering wheel
- Steering wheel: Steering wheel heating
- Storage compartment under the cargo floor
- subwoofer
- Tachometer
- Textile floor mat for the 3rd row of seats
- third brake light
- Tire pressure monitoring system (with tire-specific pressure loss warning)
- Transmission: 8-speed Geartronic automatic transmission
- Upholstery: RDesign nubuck textile/nappa leather, sports seats
- IntelliSafe Surround (Blind Spot Information System (BLIS) Blind Spot Assist including Lane Departure Warning for rapidly approaching vehicles including steering intervention if warning signals are ignored - Cross Traffic Alert (CTA) Cross Traffic Warning with braking intervention - warning for vehicles, cyclists and pedestrians approaching from the side when reversing out of parking spaces including braking to a standstill if warning signals are ignored - Rear Impact Mitigation - preventive protection in case of impending rear-end collisions)
- Interior lighting (headliner, front and rear reading lights - individually dimmable, front footwell, glove compartment and luggage compartment)
- LED turn signals integrated into the exterior mirrors
- Outdoor temperature display
- Parking assistance, front and rear
- Pollen filter
- Power outlet (12-volt connection in the luggage compartment)
- Preparation for Trailer Stability Assist (TSA)
- Radio: Sensus Connect infotainment system with High Performance Sound (9" touchscreen (22.9 cm diagonal) - 330 watts of power - 10 speakers - 2x USB ports (compatible with Apple iPod/iPhone/iPad) - Bluetooth hands-free system including audio streaming - Internet access including internet radio and apps (via paired smartphone) - Voice control - Digital vehicle owner's manual - Connected Service Booking
- Rear view camera
- rear window wiper
- Road Edge Detection (system to protect against unintentional leaving of the roadway through steering and braking interventions)
- Roof rails in high-gloss black (integrated)
- Seat belt height adjustment front and rear (2nd row of seats)
- Seats: Adjustable (electric) leg rest for driver and front passenger seats
- Seats: Driver and front passenger seats electrically adjustable (8-way) with memory function for driver seat, front passenger seat and exterior mirror settings (stored in the remote control)
- Seats: Lumbar support (4-way electrically adjustable) for driver and front passenger seats
- Sensus Connect infotainment system (9" touchscreen (22.9 cm diagonal) - Bluetooth hands-free system incl. audio streaming - Digital vehicle owner's manual - Digital radio reception (DAB+) - Internet access incl. internet radio and apps (via paired smartphone) - Voice control)
- Sensus navigation system (3D navigation - destination input via natural voice control - dynamic route guidance with real-time traffic information - local search (search for surroundings using keywords with information, ratings and photos) - send-to-car (route planning via internet or smartphone) - Volvo Lifetime MapCare)
- Sport front and rear apron
- Sport pedals
- Start/Stop technology
- Steering wheel adjustable for height and reach



- Volvo On Call with Wi-Fi hotspot (including integrated modem, external antenna, and Wi-Fi hotspot for mobile devices) – Volvo On Call features: automatic emergency call function with transmission of vehicle position and data, and alerting the Volvo On Call service center at the touch of a button (10-year subscription). Additionally, various convenience services via the smartphone app such as Send-to-Car, trip log, and locking/unlocking the vehicle (3-year subscription, extendable upon request; includes extension of the emergency call function).
- Whiplash Protection System (WHIPS) (including immersion protection on all seats and energy-absorbing front seat cushions)

Extra equipment

- Chassis: Adaptive air suspension with Four-C technology (Continuously Controlled Chassis Concept) with adjustable modes Comfort, Eco, Dynamic, Off Road including automatic leveling and entry/rear lowering (4/5 cm)
- Package: Xenium Package (Panoramic glass sunroof with lifting function and integrated, continuously adjustable sunshade (electric) - Sun blinds for the rear side windows (integrated) - High Performance Sound Pro audio system by Harman/Kardon: - 600 watts of power - 14 speakers - Fresh Air Subwoofer - Dirac Unison sound optimization - Enhanced air quality system with fine dust filtration according to PM2.5 air quality standard)
- Paint finish: Metallic paint
- Parking camera with 360° surround view
- Seats: Heated rear seats (outer seats of the 2nd row)
- Towbar (semi-electric)
- Upholstery: Nappa leather comfort seats (front seats perforated) (with active ventilation and electrically adjustable side bolsters for driver and front passenger seats including rear center armrest (2nd row of seats))
- Windscreen, heater

- Steering wheel: Multifunction buttons on the steering wheel
- Sun blinds for the rear side windows (integrated)
- Textile floor mats (4-piece set)
- Warning tone/indicator when seat belts are not fastened (for all seats)
- Wheels: 20" 5-spoke alloy wheels, sport design, diamond cut/black (tires 275/45 R20; rims 9 x 20)
- Wheels: Tire sealant (Incl. 12-volt compressor, maximum speed 80 km/h)

- Charging cable Type 2 / Type 2 (Mode 3) (7 m length, single-phase, 16A (for connection to a charging station with Type 2 connector))
- Enhanced air quality system with fine dust filtration according to air quality standard PM2.5
- Panoramic glass sliding sunroof with lifting function (electric) (with integrated, continuously adjustable sunshade)
- Park Assist Pilot (Intelligent parking assistant for parallel and perpendicular parking spaces (left and right) as well as exiting parallel parking spaces. Steering is controlled by the assistant, acceleration and braking by the driver. The parking space must be at least 1.2 times the length of the vehicle. - Front and rear parking aid)
- Radio: Sensus Connect infotainment system with Premium Sound by Bowers & Wilkins (9" touchscreen (22.9 cm diagonal) - 1,460 watts of power - 19 speakers - Nautilus tweeter - Continuum membrane midrange - Woofer with carbon/cellulose cone - Fresh Air subwoofer with mica cone - 2 USB ports compatible with Apple iPod/iPhone/iPad - Dirac Unison sound optimization - Bluetooth hands-free system including audio streaming - Room Modes - Internet access including internet radio and apps (via paired smartphone) - Voice control - Connected Services - Digital vehicle operating system

Brief expert findings

Documents submitted	At the time of the inspection, the vehicle registration certificate Part 2 (title) was available, but the vehicle registration certificate Part 1 (document) was not. (Copy)
VIN comparison	The vehicle identification number (VIN) was read from the vehicle and its conformity with the submitted documents was confirmed by the undersigned during the inspection.
Inspection	The inspection conditions were sufficient for the assessment of the vehicle. Lifting equipment and/or a pit were available for examining the vehicle.
Test drive	No test drive/shunting maneuver was carried out during the inspection of the vehicle.
Engine function test	An engine test run was performed.



Value reducing factors

No.	Component group	Description
1	Misc.	Main inspection - No evidence - No deduction
2	Rear axle	Differential - Leaking - Perform diagnosis
3	Equipment	Tirefit filler - Expired - Replace
4	Vehicle glazing	Windscreen (Laut Platz undicht) - Leaking - Perform diagnosis
5	Seat - rear	Upholstery - Scratch(es) - Smart repair
6	Seat - rear	Upholstery - Scratch(es) - Smart repair
7	Seat - rear	Upholstery - Malposition - Smart repair
8	Mudguard - left side	Mudguard - left side - Scratch(es) - Smart repair
9	Mudguard - right side	Mudguard - right side - Scratch(es) - Smart repair
10	Body	A-pillar - left side - Scratch(es) - Smart repair
11	Side panel - rear right side	Side panel - dent(s) - Smooth repair work
12	Door - front right side	Door - Dent / paintcoat damage - Smart repair
13	Door - rear right side	Door - Dent / paintcoat damage - Smart repair
14	Door - front left side	Door - Dent / paintcoat damage - Smart repair
15	Roof	Roof rail - right side - dent(s) - Smooth repair work
16	Roof	Roof rail - left side - Dent / paintcoat damage - Smart repair
17	Door - rear left side	Door - Dent / paintcoat damage - Smart repair
18	Trim / covers	Door trim - rear right side - Scratch(es) - Smart repair
19	Wheel / tyres	Alloy rim - front left side - Scratch(es) - Loss in value
20	Wheel / tyres	Tyre - front left side (nicht fahrbereit) - Broken / torn - Replace
21	Wheel / tyres	Tyre - front right side (nicht fahrbereit) - Broken / torn - Replace
22	Wheel / tyres	Alloy rim - front right side - Scratch(es) - Loss in value
23	Wheel / tyres	Alloy rim - rear right side - Scratch(es) - Loss in value
24	Trim / covers	Door trim - front left side - Scratch(es) - Replace
25	Rear bumper	Rear bumper - Dent / paintcoat damage - Repair and paint
26	Bonnet	Bonnet - Dent / paintcoat damage - Repair and paint
27	Front bumper	Front bumper - Dent / paintcoat damage - Repair and paint

Wear and tear

No.	Component group	Description
1	Seat - front	Seat cover - left side - Scratch(es) - No deduction
2	Sill - left side	Sill - Scratch(es) - No deduction
3	Seat - front	Seat cover - right side - Scratch(es) - No deduction
4	Side panel - rear right side	Sill - Scratch(es) - No deduction
5	Side panel - rear left side	Sill - Scratch(es) - No deduction
6	2nd wheel set	1 alloy rim - Scratch(es) - No deduction
7	2nd wheel set	2 tyres - does not meet manufacturer specifications - No deduction
8	Boot lid / rear door	Boot lid - Scratch(es) - No deduction
9	Roof	Roof - dent(s) - Smooth repair work

The vehicle shows signs of wear and tear commensurate with its age and use.



Order/Scope of Order

An order was placed to prepare a sales report for the described vehicle. This report includes the following:

- Description of key vehicle information
- Documentation of equipment features
(Delivery by third-party service providers)
- Documentation of damage, defects, missing parts
- Documentation of prior damage, unrepaired prior damage, repainting
- A brief visual or functional inspection of the equipment details, if possible.
(Functional testing of driver assistance systems is not included in the scope of services!)
- a photographic documentation of the vehicle

Basis for the order

This product is based on the guidelines for vehicle returns and valuations published by Alphabet Fleet GmbH. The expert makes the specific findings in each individual case objectively, within the framework of the prescribed standards, based on their own expertise.

The vehicle inspection takes place in a fully assembled, unassembled state.

Damage or defects that can only be detected during disassembly/diagnostic work or through further investigation remain within the realm of prognostic risk. An increased risk exists due to concealed defects caused by fraudulent misrepresentation and which were not identifiable by the expert.

Damage or defects resulting from normal use or wear and tear of the vehicle will be accepted in accordance with the applicable standard.

There was no explicit identification or monetary consideration of the expected features within the product.

Features which, in their nature and extent, slightly exceed normal use but do not constitute unacceptable damage, will be documented and indicated as signs of wear, if applicable.

Damage or defects that, according to the applicable standard, can no longer be attributed to normal use or wear and tear are listed under "Value Reducing Factors" in the product description.

Depending on the product specification, a monetary ID can be provided. If this takes place, the costs can be 100% or pro rata depending on the vehicle's age and mileage.

Previous damages

No apparent prior damage that had been repaired could be found on the vehicle.



Figure 1: Diagonal front (left)



Figure 2: Diagonal front (right)



Figure 3: Diagonal rear (left)



Figure 4: Diagonal rear (right)



Figure 5: Interior - front

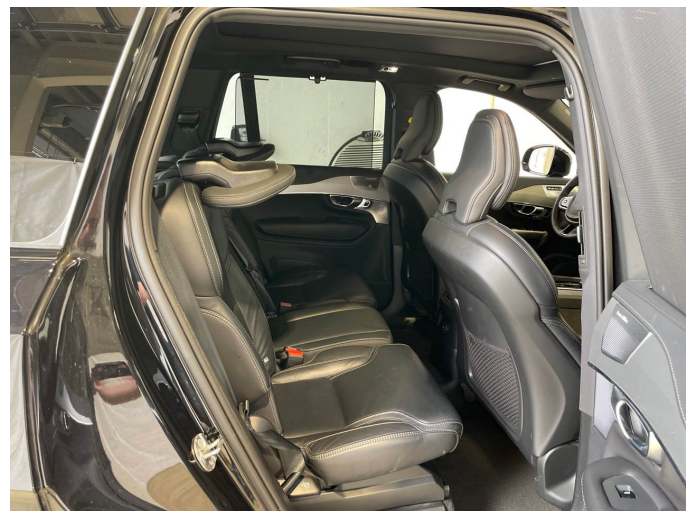


Figure 6: Interior - rear



Figure 7: Instrument cluster



Figure 8: Instrument panel



Figure 9: Interior 360° view



Figure 10: Cargo area

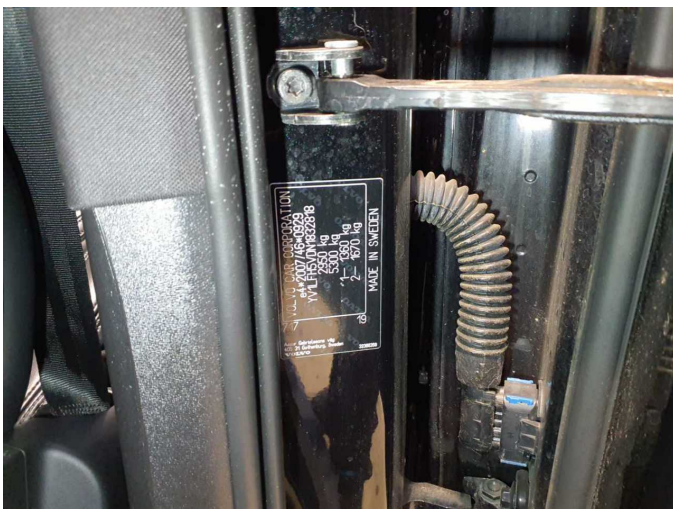


Figure 11: VIN



Figure 12: Mounted tyres



Figure 13: Documents



Figure 14: Additional tyres



Figure 15: Additional tyres

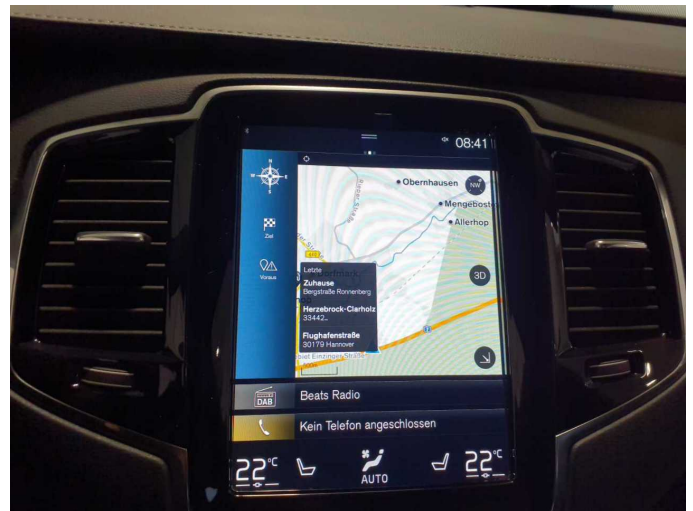


Figure 16: Navigation



Figure 17: Misc.



Figure 18: Misc.



Figure 19: Misc.



Figure 20: Misc.



Figure 21: Misc.



Figure 22: Misc.



Figure 23: Misc.

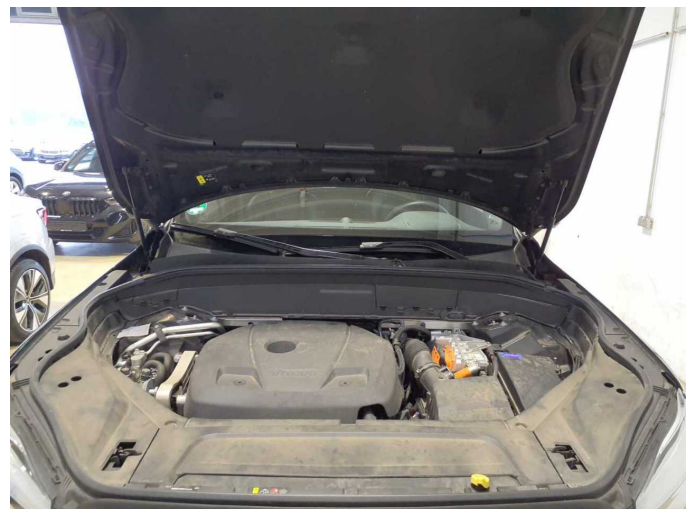


Figure 24: Misc.



Figure 25: Misc.



Figure 26: Misc.

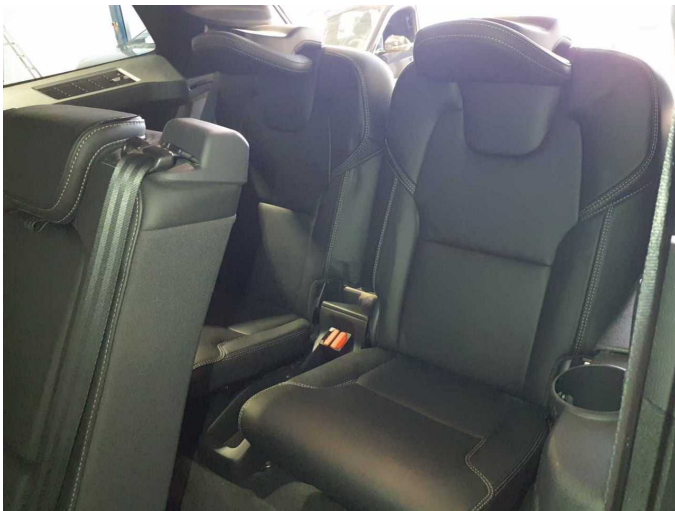


Figure 27: Misc.



Figure 28: Misc.



Figure 29: Misc.



Figure 30: Misc.



Figure 31: Misc.



Figure 32: Misc.



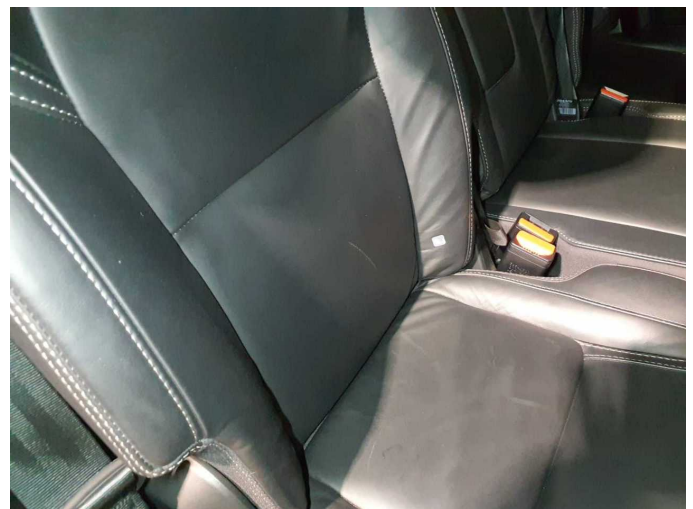
Damage 2: Rear axle: Differential - Leaking - Perform diagnosis



Damage 3: Equipment: Tirefit filler - Expired - Replace



Damage 4: Vehicle glazing: Windscreen (Laut Platz undicht) - Leaking - Perform diagnosis



Damage 5: Seat - rear: Upholstery - Scratch(es) - Smart repair



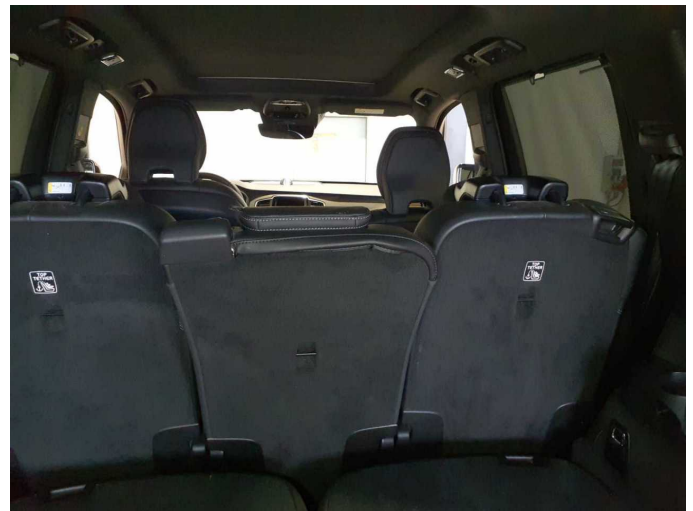
Damage 5: Seat - rear: Upholstery - Scratch(es) - Smart repair



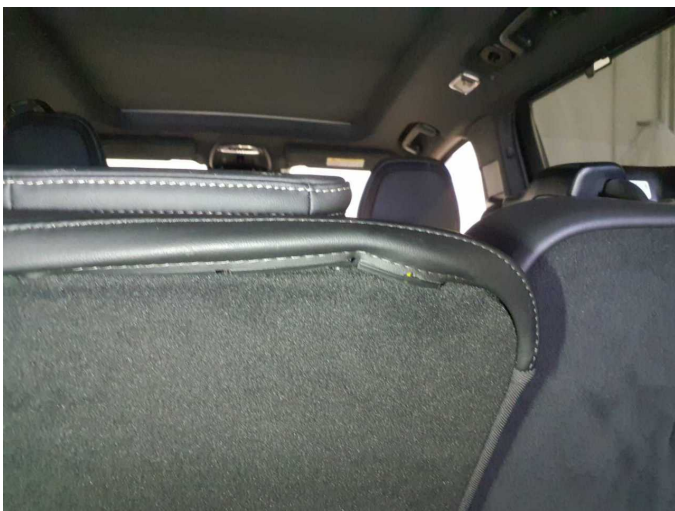
Damage 6: Seat - rear: Upholstery - Scratch(es) - Smart repair



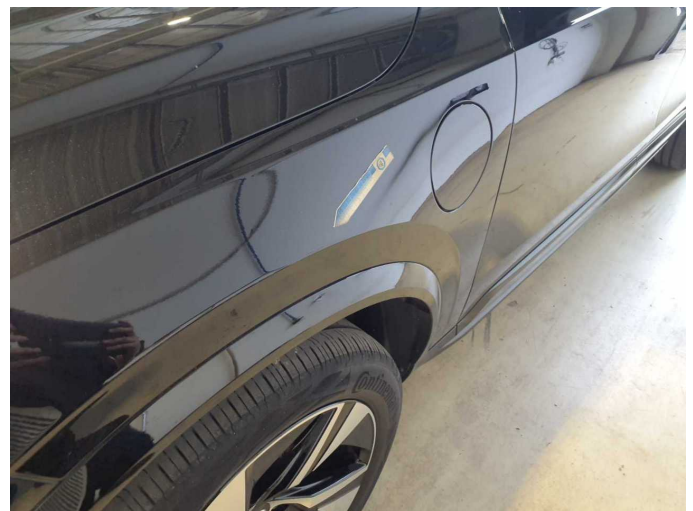
Damage 6: Seat - rear: Upholstery - Scratch(es) - Smart repair



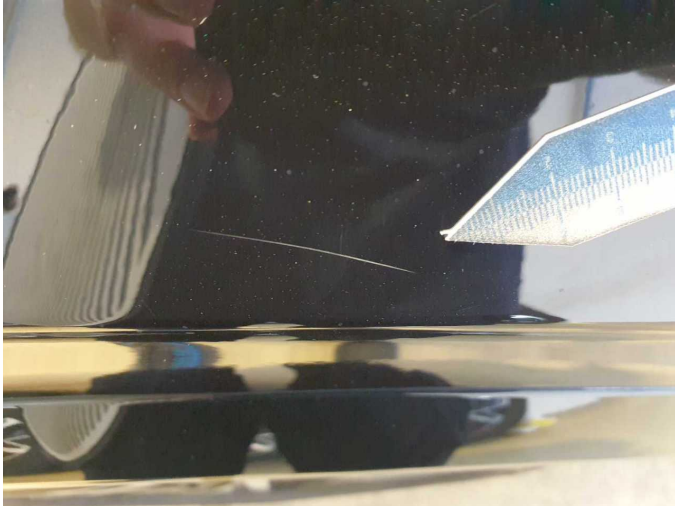
Damage 7: Seat - rear: Upholstery - Malposition - Smart repair



Damage 7: Seat - rear: Upholstery - Malposition - Smart repair



Damage 8: Mudguard - left side: Mudguard - left side - Scratch(es) - Smart repair



Damage 8: Mudguard - left side: Mudguard - left side - Scratch(es) - Smart repair



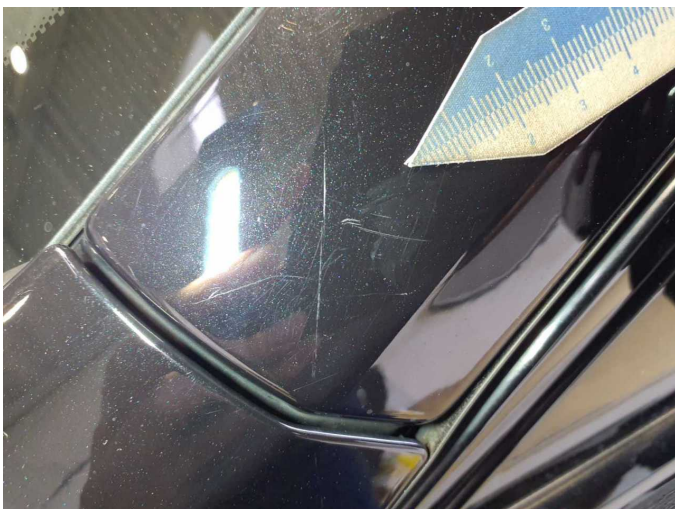
Damage 9: Mudguard - right side: Mudguard - right side - Scratch(es) - Smart repair



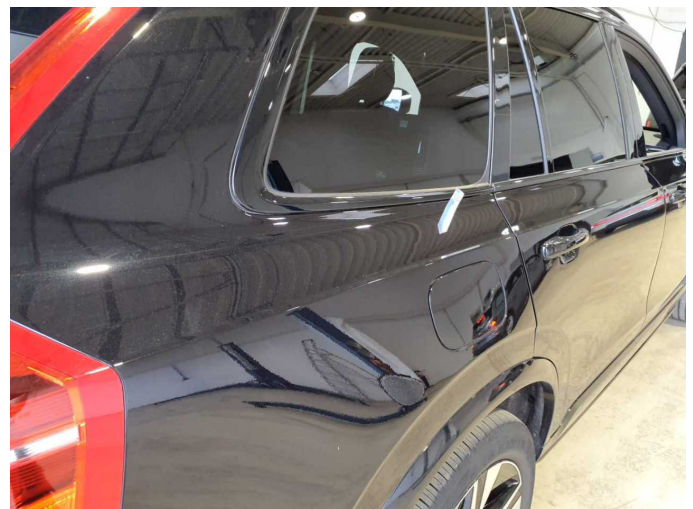
Damage 9: Mudguard - right side: Mudguard - right side - Scratch(es) - Smart repair



Damage 10: Body: A-pillar - left side - Scratch(es) - Smart repair



Damage 10: Body: A-pillar - left side - Scratch(es) - Smart repair



Damage 11: Side panel - rear right side: Side panel - dent(s) - Smooth repair work



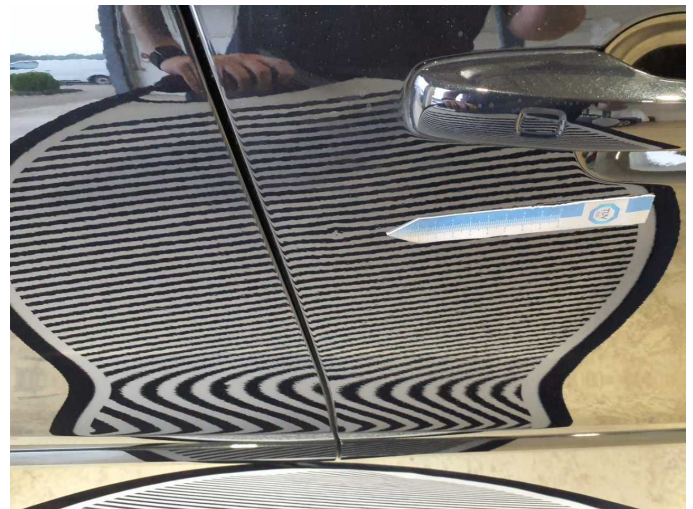
Damage 11: Side panel - rear right side: Side panel - dent(s) - Smooth repair work



Damage 11: Side panel - rear right side: Side panel - dent(s) - Smooth repair work



Damage 12: Door - front right side: Door - Dent / paintcoat damage - Smart repair



Damage 12: Door - front right side: Door - Dent / paintcoat damage - Smart repair



Damage 12: Door - front right side: Door - Dent / paintcoat damage - Smart repair



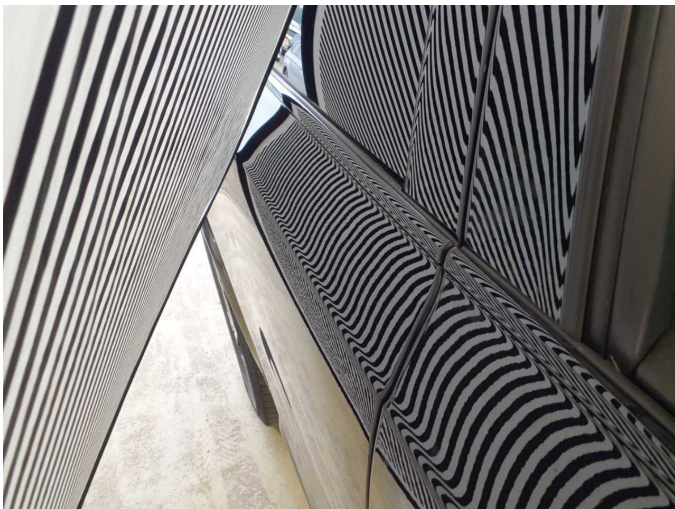
Damage 13: Door - rear right side: Door - Dent / paintcoat damage - Smart repair



Damage 13: Door - rear right side: Door - Dent / paintcoat damage - Smart repair



Damage 13: Door - rear right side: Door - Dent / paintcoat damage - Smart repair



Damage 13: Door - rear right side: Door - Dent / paintcoat damage - Smart repair



Damage 14: Door - front left side: Door - Dent / paintcoat damage - Smart repair



Damage 14: Door - front left side: Door - Dent / paintcoat damage - Smart repair



Damage 14: Door - front left side: Door - Dent / paintcoat damage - Smart repair



Damage 14: Door - front left side: Door - Dent / paintcoat damage - Smart repair



Damage 15: Roof: Roof rail - right side - dent(s) - Smooth repair work



Damage 15: Roof: Roof rail - right side - dent(s) - Smooth repair work



Damage 15: Roof: Roof rail - right side - dent(s) - Smooth repair work



Damage 15: Roof: Roof rail - right side - dent(s) - Smooth repair work



Damage 16: Roof: Roof rail - left side - Dent / paintcoat damage - Smart repair



Damage 16: Roof: Roof rail - left side - Dent / paintcoat damage - Smart repair



Damage 16: Roof: Roof rail - left side - Dent / paintcoat damage - Smart repair



Damage 16: Roof: Roof rail - left side - Dent / paintcoat damage - Smart repair



Damage 17: Door - rear left side: Door - Dent / paintcoat damage - Smart repair



Damage 17: Door - rear left side: Door - Dent / paintcoat damage - Smart repair



Damage 17: Door - rear left side: Door - Dent / paintcoat damage - Smart repair



Damage 17: Door - rear left side: Door - Dent / paintcoat damage - Smart repair



Damage 18: Trim / covers: Door trim - rear right side - Scratch(es) - Smart repair



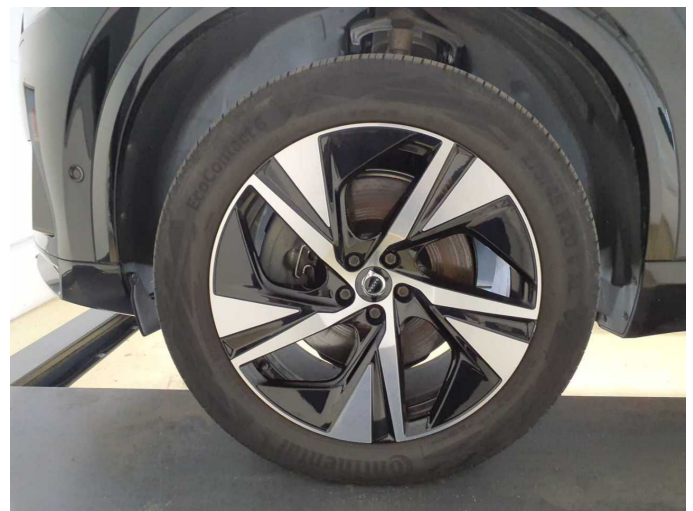
Damage 18: Trim / covers: Door trim - rear right side - Scratch(es) - Smart repair



Damage 19: Wheel / tyres: Alloy rim - front left side - Scratch(es) - Loss in value



Damage 19: Wheel / tyres: Alloy rim - front left side - Scratch(es) - Loss in value



Damage 20: Wheel / tyres: Tyre - front left side (nicht fahrbereit) - Broken / torn - Replace



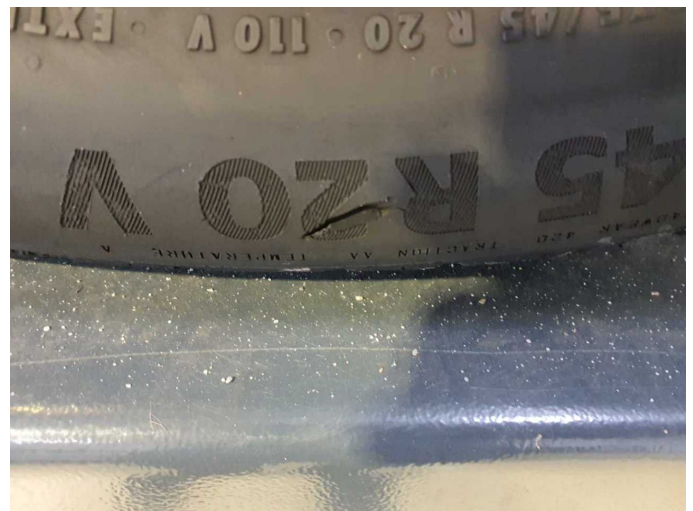
Damage 20: Wheel / tyres: Tyre - front left side (nicht fahrbereit) - Broken / torn - Replace



Damage 21: Wheel / tyres: Tyre - front right side (nicht fahrbereit) - Broken / torn - Replace



Damage 21: Wheel / tyres: Tyre - front right side (nicht fahrbereit) - Broken / torn - Replace



Damage 21: Wheel / tyres: Tyre - front right side (nicht fahrbereit) - Broken / torn - Replace



Damage 22: Wheel / tyres: Alloy rim - front right side - Scratch(es) - Loss in value



Damage 22: Wheel / tyres: Alloy rim - front right side - Scratch(es) - Loss in value



Damage 22: Wheel / tyres: Alloy rim - front right side - Scratch(es) - Loss in value



Damage 23: Wheel / tyres: Alloy rim - rear right side - Scratch(es) - Loss in value



Damage 23: Wheel / tyres: Alloy rim - rear right side - Scratch(es) - Loss in value



Damage 23: Wheel / tyres: Alloy rim - rear right side - Scratch(es) - Loss in value



Damage 24: Trim / covers: Door trim - front left side - Scratch(es) - Replace



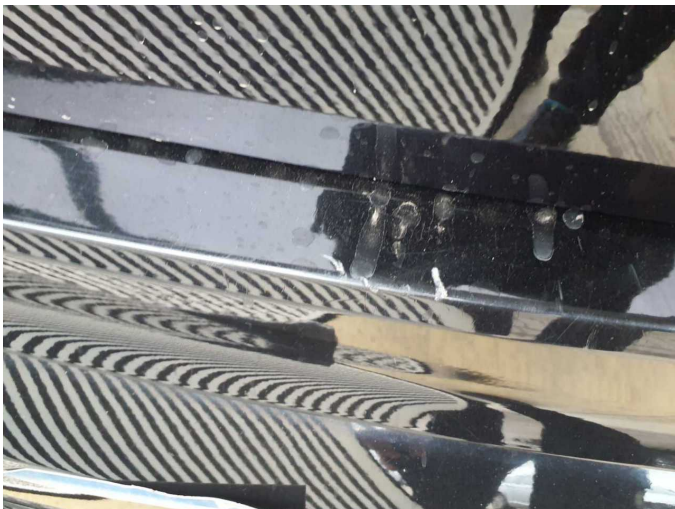
Damage 24: Trim / covers: Door trim - front left side - Scratch(es) - Replace



Damage 25: Rear bumper: Rear bumper - Dent / paintcoat damage - Repair and paint



Damage 25: Rear bumper: Rear bumper - Dent / paintcoat damage - Repair and paint



Damage 25: Rear bumper: Rear bumper - Dent / paintcoat damage - Repair and paint



Damage 25: Rear bumper: Rear bumper - Dent / paintcoat damage - Repair and paint



Damage 25: Rear bumper: Rear bumper - Dent / paintcoat damage - Repair and paint



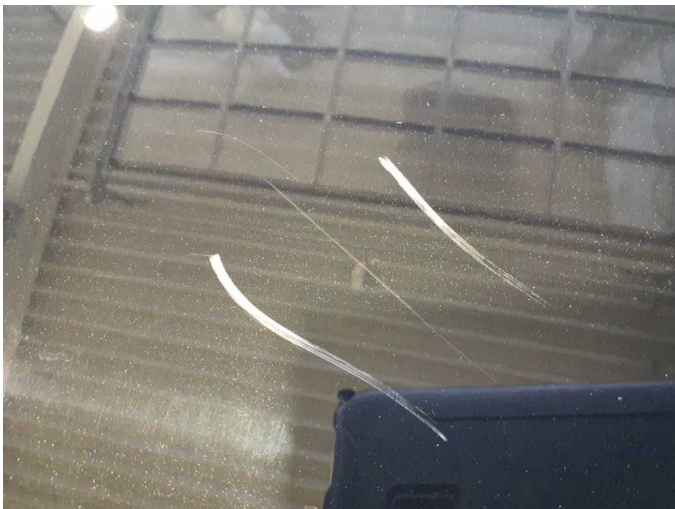
Damage 26: Bonnet: Bonnet - Dent / paintcoat damage - Repair and paint



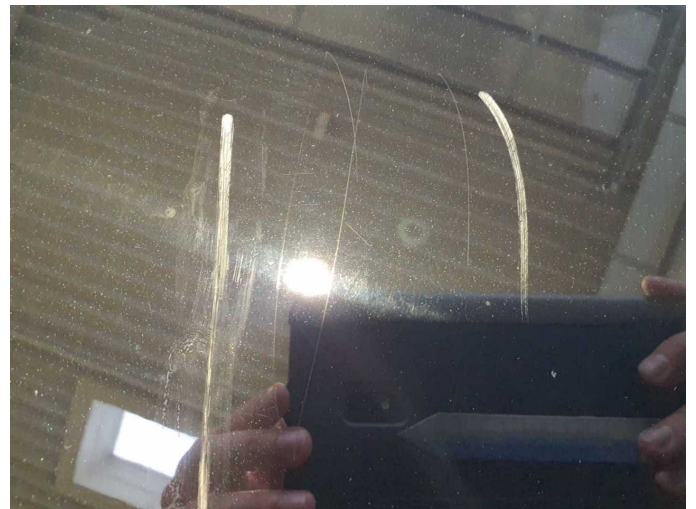
Damage 26: Bonnet: Bonnet - Dent / paintcoat damage - Repair and paint



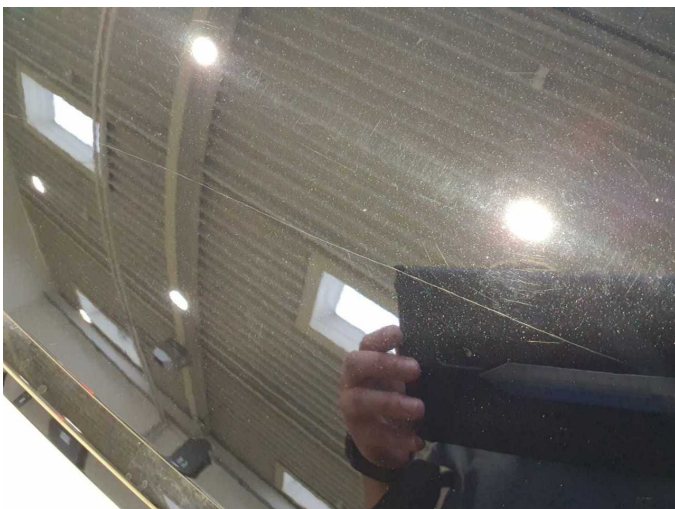
Damage 26: Bonnet: Bonnet - Dent / paintcoat damage - Repair and paint



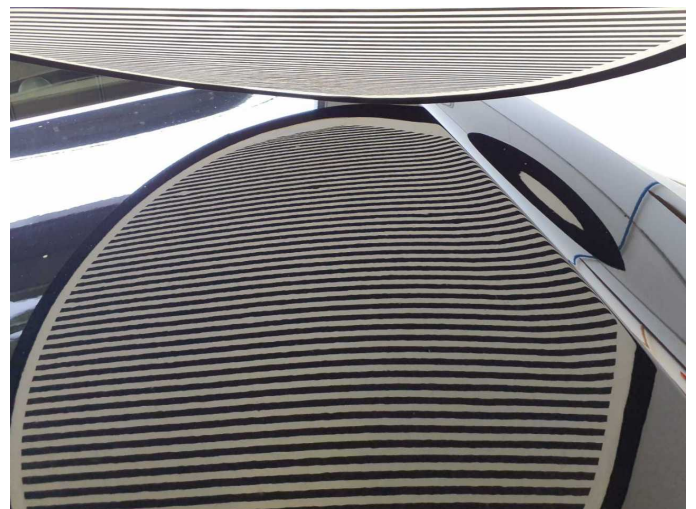
Damage 26: Bonnet: Bonnet - Dent / paintcoat damage - Repair and paint



Damage 26: Bonnet: Bonnet - Dent / paintcoat damage - Repair and paint



Damage 26: Bonnet: Bonnet - Dent / paintcoat damage - Repair and paint



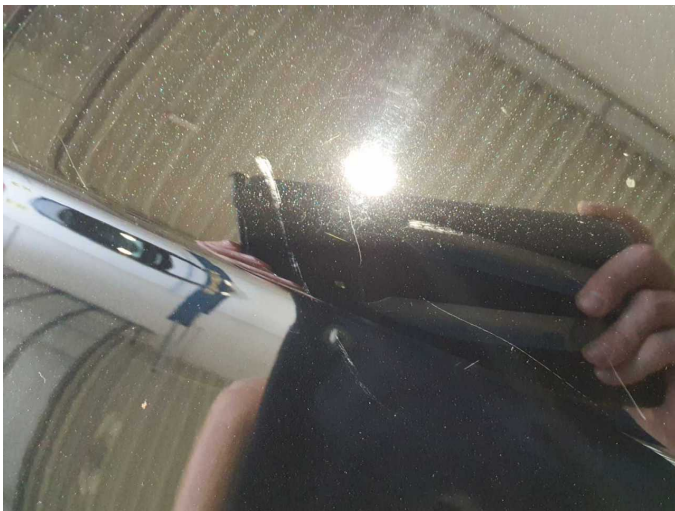
Damage 26: Bonnet: Bonnet - Dent / paintcoat damage - Repair and paint



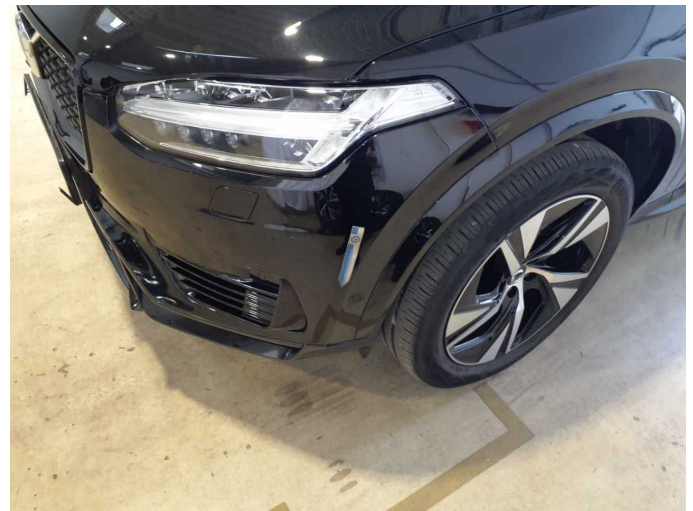
Damage 26: Bonnet: Bonnet - Dent / paintcoat damage - Repair and paint



Damage 26: Bonnet: Bonnet - Dent / paintcoat damage - Repair and paint



Damage 26: Bonnet: Bonnet - Dent / paintcoat damage - Repair and paint



Damage 27: Front bumper: Front bumper - Dent / paintcoat damage - Repair and paint



Damage 27: Front bumper: Front bumper - Dent / paintcoat damage - Repair and paint



Damage 27: Front bumper: Front bumper - Dent / paintcoat damage - Repair and paint



Damage 27: Front bumper: Front bumper - Dent / paintcoat damage - Repair and paint



Damage 27: Front bumper: Front bumper - Dent / paintcoat damage - Repair and paint



Wear and tear 6: 2nd wheel set: 1 alloy rim - Scratch(es) - No deduction



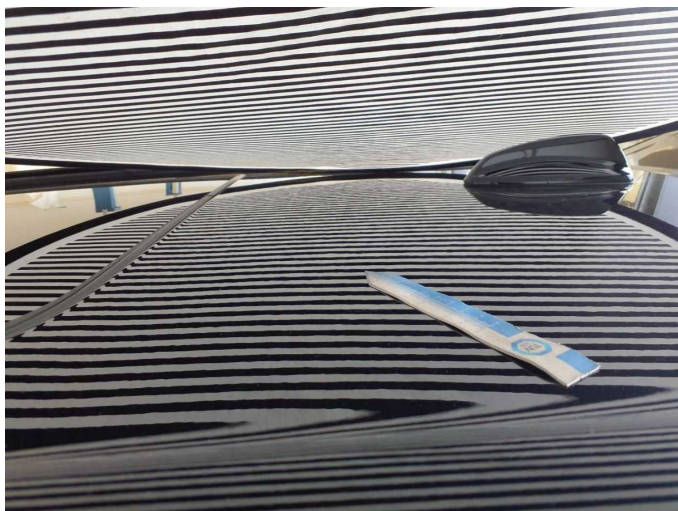
Wear and tear 7: 2nd wheel set: 2 tyres - does not meet manufacturer specifications - No deduction



Wear and tear 7: 2nd wheel set: 2 tyres - does not meet manufacturer specifications - No deduction



Wear and tear 9: Roof: Roof - dent(s) - Smooth repair work



Wear and tear 9: Roof: Roof - dent(s) - Smooth repair work