

## Expertise

Protocol number: 46318174  
Order No. / Reference: 26571036  
Inspection date: 3 Jul 2026

Manufacturer: Volkswagen

Model: Passat Variant 2.0 TDI SCR DSG Business

VIN: WVVZZZ3CZPE029175



### Vehicle details

#### Manufacturer / Type / Model / Equipment

Volkswagen Passat Variant 2.0 TDI SCR DSG Business

**Vehicle Identification number** WVVZZZ3CZPE029175

**Mileage (Read)** 172,367 km

**First registration** 13 Feb 2023

**Number of holders** 1

**Power / Engine displacement** 110 kw / 1,968 ccm

**Fuel type / Cylinder** Diesel / 4

**Gearbox / Number of gears** Automatic / 7

**Type of drive** Front drive

**Type of vehicle** Station wagon

**Colour / colour code** Mondsteingrau

**Doors / Seats** 5 / 5

**Upholstery type** Cloth

**Colour of upholstery** Black-Anthracite





## Equipment

### Standard equipment

- Airbag for driver and front passenger
- Anti-lock braking system (ABS)
- Adaptive Cruise Control (ACC) "stop & go", including speed limiter
- Cup holders (2) front
- third brake light
- black roof rails
- Tachometer
- Entry/warning lights in LED technology in the front doors
- Electronic parking brake including auto-hold function
- Automatic headlight control
- Remote release for luggage compartment lid
- Pedestrian detection
- Adjustable luggage compartment floor
- Rear window heated
- Interior lights with delayed shut-off and dimming function
- Air conditioning
- Front headrests
- LED fog lights and cornering lights
- LED headlights with daytime running lights
- Headlight range control
- Front center armrest, height and length adjustable, with storage box
- Mesh partition
- Emergency braking assistant "Front Assist" (for automatic distance control ACC up to 210 km/h)
- Upholstery: "Business" fabric
- Radio "Composition"
- Radio accessories: Digital radio reception DAB+
- Wheels: 4 light alloy wheels "Sepang" 6.5 J x 16
- Rear bench seat, undivided, backrest asymmetrically split and foldable, with center armrest
- Power steering
- Seats: Comfort seats in the front
- Seats: Front seats are height-adjustable
- Start-stop system
- Telephone interface
- First aid kit, warning triangle and high-visibility vest
- Electronic immobilizer
- Central locking with remote control
- Airbag, head airbag system for front and rear passengers
- App-Connect
- Electrically adjustable and heated exterior mirrors, ambient lighting
- Hill start assist
- Chrome trim on the side windows
- Diesel particulate filter
- Parking aid - warning signals for obstacles in the front and rear area
- Electronic stability program and electromechanical brake booster
- Windscreen made of laminated safety glass, heat and sound insulating
- Transmission: 7-speed DSG
- rear window wiper
- ISOFIX mounting points
- Rear headrests (3)
- Paint finish: Solid
- LED taillights
- Steering wheel: Multifunction steering wheel in leather, with paddle shifters
- "Premium" multifunction display with multicolor screen
- Fatigue detection
- Non-smoking version
- Emergency call service
- Package: Light and Sight Package "Plus"
- Proactive occupant protection system in conjunction with "Front Assist"
- Tire pressure monitoring system (passive)
- Wheels: Tire Mobility Set
- Gearshift knob in leather
- Keyless start system without safe locking
- Seat belts: Three-point automatic seat belt
- Seats: Lumbar support in the front
- Lane keeping assistant "Lane Assist"
- 12V power outlet on the rear of the center console
- Textile floor mats
- Warning tone and light for unfastened seat belts front and rear



### Extra equipment

- Towbar, foldable (with electric release)
- Chassis: Rear suspension with fully automatic level control
- Navigation system "Discover Media" incl. "Streaming & Internet" (4x20 watts, user interface with proximity sensor, dual tuner with phase diversity, vehicle menu, speed, volume adjustment, map, 2D display, tone control, 3-way TFT display with touchscreen operation, navigation "Discover Media" incl. "Streaming & Internet", MP3 radio, telephone contact addresses for navigation, telephone interface, 2 USB ports also for iPod/iPhone, traffic sign recognition "VW Media Control", We Connect Plus, 3 years, incl. We Connect route guidance, dynamic RDS, TMC tuner)
- Package: Winter (front windshield washer nozzles automatically heated - front seats heated)
- Rear side windows and rear window tinted
- Voice control
- "Comfort" telephone interface with inductive charging function (hands-free system)
- Roof headliner in titanium black
- Removable luggage compartment protective mat (back of the rear seat backrest with black rubber coating)
- Package: "Business Premium" package incl. navigation (from Business trim level) (2 USB-C ports in the front, USB-C charging socket in the rear, 230V socket, App-Connect incl. wireless, Apple CarPlay, Android Auto, "Travel Assist" driver assistance system and "Lane Assist" lane keeping assist system, Air Care Climatronic with 3-zone temperature control, active combination filter and rear controls, lumbar support in the front, electric on the driver's side, massage function on the driver's side, "Rear View" reversing camera, heated windshield washer nozzles, Comfort telephone interface, inductive charging function, heated front seats)
- Proactive occupant protection system and lane change assistant "Side Assist" (Proactive occupant protection system in conjunction with "Front Assist" and "Side Assist" - lane change assistant "Side Assist" and parking assistant)

### Brief expert findings

Documents submitted	At the time of the inspection, the vehicle registration certificate Part 2 (title) was available, but the vehicle registration certificate Part 1 (document) was not. (Copy)
VIN comparison	The vehicle identification number (VIN) was read from the vehicle and its conformity with the submitted documents was confirmed by the undersigned during the inspection.
Inspection	The inspection conditions were sufficient for the assessment of the vehicle. Lifting equipment and/or a pit were available for examining the vehicle.
Test drive	No test drive/shunting maneuver was carried out during the inspection of the vehicle.
Engine function test	An engine test run was performed.

### Value reducing factors

No.	Component group	Description
1	Front bumper	Front bumper - Scratch(es) - Smart repair
2	Interior	Interior - Odour - Ozone treatment
3	Bonnet	Bonnet - Dent / paintcoat damage - Smart repair
4	Boot lid / rear door	Boot lid - Deformed - Smart repair

### Wear and tear

No.	Component group	Description
1	Interior	Interior - Scratch(es) - No deduction
2	Vehicle glazing	Windscreen - Stone chips - No deduction

The vehicle shows signs of wear and tear commensurate with its age and use.



## Order/Scope of Order

An order was placed to prepare a sales report for the described vehicle. This report includes the following:

- Description of key vehicle information
- Documentation of equipment features  
*(Delivery by third-party service providers)*
- Documentation of damage, defects, missing parts
- Documentation of prior damage, unrepaired prior damage, repainting
- A brief visual or functional inspection of the equipment details, if possible.  
*(Functional testing of driver assistance systems is not included in the scope of services!)*
- a photographic documentation of the vehicle

## Basis for the order

This product is based on the guidelines for vehicle returns and valuations published by Alphabet Fleet GmbH. The expert makes the specific findings in each individual case objectively, within the framework of the prescribed standards, based on their own expertise.

The vehicle inspection takes place in a fully assembled, unassembled state.

Damage or defects that can only be detected during disassembly/diagnostic work or through further investigation remain within the realm of prognostic risk. An increased risk exists due to concealed defects caused by fraudulent misrepresentation and which were not identifiable by the expert.

Damage or defects resulting from normal use or wear and tear of the vehicle will be accepted in accordance with the applicable standard.

There was no explicit identification or monetary consideration of the expected features within the product.

Features which, in their nature and extent, slightly exceed normal use but do not constitute unacceptable damage, will be documented and indicated as signs of wear, if applicable.

Damage or defects that, according to the applicable standard, can no longer be attributed to normal use or wear and tear are listed under "Value Reducing Factors" in the product description.

Depending on the product specification, a monetary ID can be provided. If this takes place, the costs can be 100% d or pro rata depending on the vehicle's age and mileage.

## Previous damages

No apparent prior damage that had been repaired could be found on the vehicle.

## Comments

Wartungshistorie gemäß Auftraggeber Informationen.

- Winterradsatz ist kein Bestandteil des Auslieferungsumfangs.



Figure 1: Diagonal front (left)



Figure 2: Diagonal front (right)



Figure 3: Diagonal rear (left)



Figure 4: Diagonal rear (right)



Figure 5: Interior - front



Figure 6: Interior - rear



Figure 7: Instrument cluster



Figure 8: Instrument panel



Figure 9: Interior 360° view



Figure 10: Cargo area

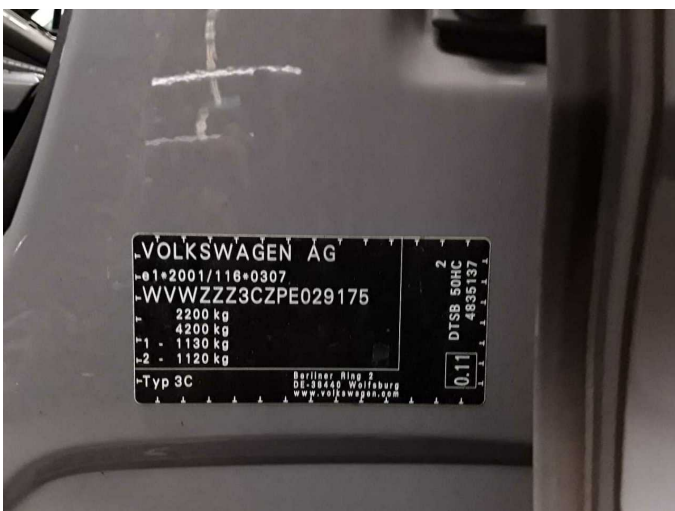


Figure 11: VIN



Figure 12: Mounted tyres



Figure 13: Documents



Figure 14: Additional tyres



Figure 15: Navigation



Figure 16: Misc.



Figure 17: Misc.



Figure 18: Misc.



Figure 19: Misc.



Figure 20: Misc.



Figure 21: Misc.



Figure 22: Misc.



Figure 23: Misc.



Figure 24: Misc.



Figure 25: Misc.



Figure 26: Misc.



Figure 27: Misc.



Figure 28: Misc.

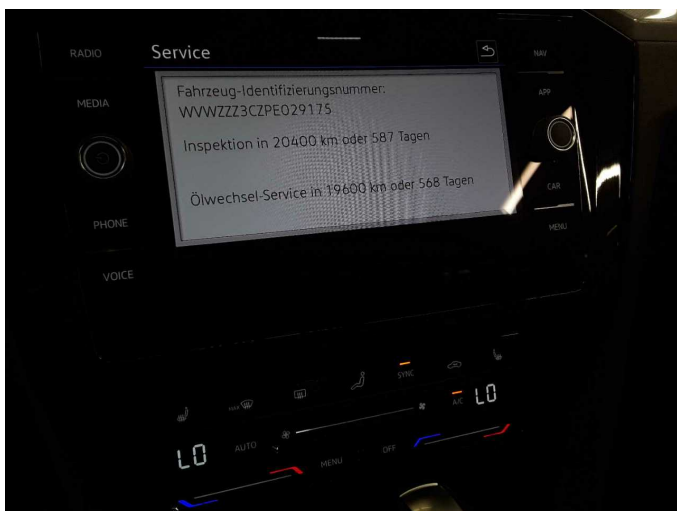


Figure 29: Misc.



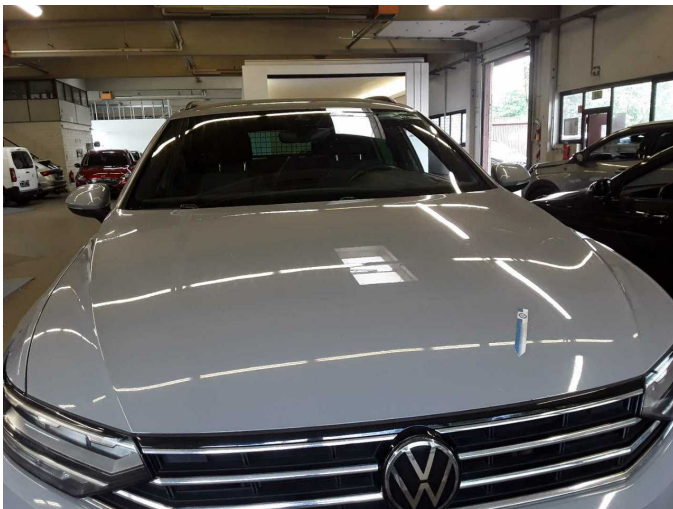
Damage 1: Front bumper: Front bumper - Scratch(es) - Smart repair



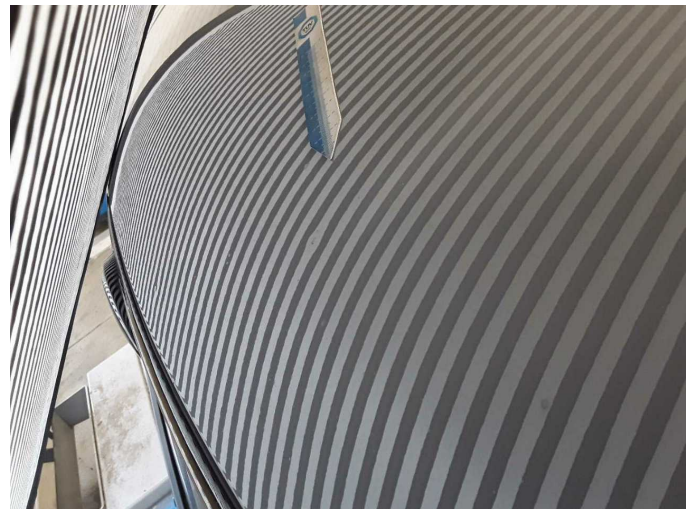
**Damage 1:** Front bumper: Front bumper - Scratch(es) - Smart repair



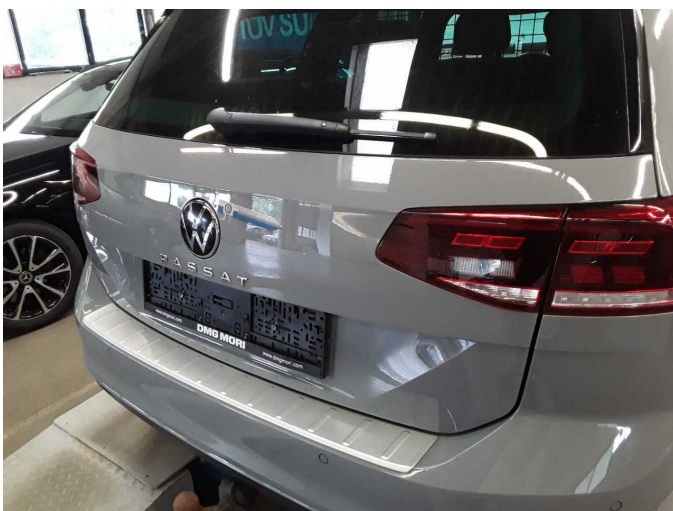
**Damage 1:** Front bumper: Front bumper - Scratch(es) - Smart repair



**Damage 3:** Bonnet: Bonnet - Dent / paintcoat damage - Smart repair



**Damage 3:** Bonnet: Bonnet - Dent / paintcoat damage - Smart repair



**Damage 4:** Boot lid / rear door: Boot lid - Deformed - Smart repair



**Damage 4:** Boot lid / rear door: Boot lid - Deformed - Smart repair



# Wartungshistorie

(gemäß Auftraggeber Informationen)

Fahrgestellnummer: WVWZZZ3CZPE029175  
Hersteller / Modell: VOLKSWAGEN VOLKSWAGEN Passat Variant 2.0 TDI SCR DSG  
Business

Datum	KM-Stand	Beschreibung
10.02.2026	162.696	Bremse Sonstiges; Bremsklötze hinten; Bremsscheiben + Klötze h; Bremsscheiben hinten; HU + AU; Kraftstofffilter ern; Motoröl b. Wartung; Ölfilter ern; Regelwartungsdienst; Systemtest/Eigendiagnose; Wartung Sonstiges
24.07.2025	130.785	Bremse Sonstiges; Bremsklötze vorne; Bremsscheiben + Klötze v; Bremsscheiben vorne; Getriebeöl ern/prüfen; Motoröl b. Wartung; Ölfilter ern; Regelwartungsdienst; Systemtest/Eigendiagnose; Wartung Sonstiges
08.01.2025	97.272	Bremse Sonstiges; Bremsflüssigkeit; Bremsflüssigkeit ern; Bremsklötze hinten; Bremsscheiben + Klötze h; Bremsscheiben hinten; Luftfiltereinsatz ern; Motoröl b. Wartung; Ölfilter ern; Regelwartungsdienst; Wartung Sonstiges
01.07.2024	69.869	Bremse Sonstiges; Bremsklötze hinten; Bremsklötze vorne; Bremsscheiben vorne; Kraftstofffilter ern; Motoröl b. Wartung; Ölfilter ern; Regelwartungsdienst; Wartung Sonstiges
22.11.2023	36.555	Motoröl b. Wartung; Regelwartungsdienst