

## Expertise

Protocol number: 45869219  
Order No. / Reference: 26325580  
Inspection date: 10 Jun 2026

Manufacturer: Mercedes-Benz

Model: C 220 d T 9G-TRONIC Avantgarde Advanced

VIN: W1KAH0EB2RF147315



### Vehicle details

#### Manufacturer / Type / Model / Equipment

Mercedes-Benz C 220 d T 9G-TRONIC Avantgarde Advanced

**Vehicle Identification number** W1KAH0EB2RF147315

**Mileage (Read)** 81,693 km

**First registration** 30 Jan 2024

**Number of holders** 1

**Power / Engine displacement** 147 kw / 1,993 ccm

**Fuel type / Cylinder** Hybrid Diesel / E / 4

**Gearbox / Number of gears** Automatic / 9

**Type of drive** Rear drive

**Type of vehicle** Station wagon

**Colour / colour code** Spektralblau

**Doors / Seats** 5 / 5

**Upholstery type** Cloth / leather combination

**Colour of upholstery** Black-Anthracite

**Vehicle with smoke odor** no

**readiness to drive** Not roadworthy / moveable



## Vehicle details

<b>Maintenance booklet / proof</b>	Non-existent	<b>Next maintenance in</b>	281 Tag(e)
<b>Key is / should be</b>	2 / 2	<b>FZG documents</b>	ZB#2 (B) was available (copy), ZB#1 (S) was not available.
		<b>Letter No.</b>	GY559251
<b>Previous damage / Accident</b>	None detectable	<b>Repainting</b>	None detectable
<b>Inspection conditions</b>	sufficient	<b>Lifting equipment / pit</b>	yes
<b>Test drive</b>	Not performed	<b>Engine function test</b>	Performed
<b>readiness to drive</b>	Not roadworthy / moveable		
<b>Manufacturer key number/ type code number</b>	2222 / AYH 00337		
<b>Emission standard</b>	EURO6;WLTP;AP;PI/CI; M, N1 I	<b>fine dust sticker</b>	
<b>Permitted total weight</b>	2,400 kg	<b>Empty weight</b>	

## Tyres

### Mounted tyres

#	Tyre size	Type of tyre	Manufacturer	Tread depth
1)	225/50 R17 98V	Winter tyres on Light alloy	Falken	5mm / 5mm
2)	225/50 R17 98V	Winter tyres on Light alloy	Falken	5mm / 5mm

### Additional tyres

#	Tyre size	Type of tyre	Manufacturer	Tread depth
1)	225/50 R17 98Y	Summer tyres (Without wheel rim)	Fulda	4mm / 4mm
2)	225/50 R17 98Y	Summer tyres (Without wheel rim)	Fulda	4mm / 4mm

### Replacement

Typ	Tyre size	Type of tyre	Manufacturer	Tread depth
	Tirefit	Expiration date 01/2029		

**Legend: Tread depth information for the left tire is listed first, for the right tire it is listed second on the axle in the direction of travel.**



## Equipment

### Standard equipment

- Adaptive Highbeam Assist
- Airbag: Automatic passenger airbag deactivation
- Airbag: Side airbag for driver and front passenger
- Ambient lighting with 64 light colors
- Left and right exterior mirrors are heated and electrically adjustable
- Roof rails in polished aluminum
- Double cup holder at the front
- EASY-PACK tailgate
- Driver display
- Electric windows (4-way)
- Fingerprint scanner
- Speed Limit Assistant
- rear window wiper
- Interior headliner fabric crystal grey
- KEYLESS-GO start function
- THERMATIC automatic climate control with 2 climate zones
- Front headrests
- Paint finish: Solid
- LED High Performance Headlights
- Mercedes-Benz emergency call system
- Center console in high-gloss black
- Package: Storage
- Package: Interior lighting package
- Package: Parking package with reversing camera
- Package: Mirror package
- Upholstery: ARTICO leatherette/fabric
- Radio: MBUX multimedia system
- Radio accessories: Communication module (LTE) for using Mercedes me connect services
- Remote Services
- Power steering
- Seats: Rear seat backrests foldable
- Phone accessories: Wireless charging system for mobile devices
- TIREFIT with tire inflation compressor
- Pre-installation for digital key handover
- Electronic immobilizer
- Decorative elements in diamond pattern, silver-grey

### Extra equipment

- Paint finish: Metallic
- Type designation removed from trunk lid
- Heat and noise insulating acoustic glass (for windshield and front doors)

- Airbag for driver and front passenger
- Airbag: Center airbag
- Airbag: Windowbag for driver and front passenger
- ATTENTION ASSIST
- Basic services
- Brake assist, active
- Diesel particulate filter
- DYNAMIC SELECT
- Electronic Stability Program (ESP)
- Chassis: AGILITY CONTROL chassis with selective damping system and lowered suspension
- Velour floor mats
- Transmission: 9-speed automatic, 9G-TRONIC
- Heated rear window
- ISOFIX child seat attachment with top tether in the rear
- Mechanical child safety lock for the rear doors
- Rear headrests (3)
- Fuel tank with larger volume 66 l
- Cargo area cover including EASY-PACK safety net
- Steering wheel: Multifunction sports steering wheel in leather
- Navigation: MBUX Navigation Premium
- Package: Avantgarde Advanced
- Package: Trunk Comfort
- Package: Seating comfort
- Package: USB
- Radio: Extended MBUX functions
- Radio accessories: Digital radio (DAB)
- Radio accessories: Central display
- Tire pressure monitoring system (TPMS)
- Windscreen wipers with rain sensor
- Seats: Heated seats for driver and front passenger
- Lane Keeping Assist, active
- Phone accessories: Smartphone integration
- Cruise control
- Fully digital instrument display
- High-visibility vest for drivers
- Central locking with remote control

- Wheels: 43.2 cm (17") light alloy wheels in 5-spoke design (black painted and polished with 225/50 R 17 on 7 J x 17 ET 44.5)
- Heat-insulating dark tinted glass



## Brief expert findings

Documents submitted	At the time of the inspection, the vehicle registration certificate Part 2 (title) was available, but the vehicle registration certificate Part 1 (document) was not. (Copy)
VIN comparison	The vehicle identification number (VIN) was read from the vehicle and its conformity with the submitted documents was confirmed by the undersigned during the inspection.
Inspection	The inspection conditions were sufficient for the assessment of the vehicle. Lifting equipment and/or a pit were available for examining the vehicle.
Test drive	No test drive/shunting maneuver was carried out during the inspection of the vehicle.
Engine function test	An engine test run was performed.
readiness to drive	The vehicle was not capable of driving under its own power at the time of inspection, but can be moved on its own axle with the aid of assistance.

## Value reducing factors

No.	Component group	Description
1	Electrical system	Battery - Empty - Perform diagnosis
2	Equipment	Vehicle key with remote control (Batterie) - Empty - Replace
3	Wing mirror - left side	Cap - Scratch(es) - Smart repair
4	Interior	Interior (Rauch) - Odour - Ozone treatment

## Wear and tear

No.	Component group	Description
1	Misc.	Inspection / maintenance - No evidence - No deduction
2	Bonnet	Bonnet - Stone chips - No deduction
3	Body	Body - Scratch(es) - No deduction
4	Documents	Service book (Digitaler Ausdruck) - Missing - No deduction
5	Braking system	Brake fluid - No evidence - No deduction

The vehicle shows signs of wear and tear commensurate with its age and use.

## Order/Scope of Order

An order was placed to prepare a sales report for the described vehicle. This report includes the following:

- Description of key vehicle information
- Documentation of equipment features  
(*Delivery by third-party service providers*)
- Documentation of damage, defects, missing parts
- Documentation of prior damage, unrepaired prior damage, repainting
- A brief visual or functional inspection of the equipment details, if possible.  
(*Functional testing of driver assistance systems is not included in the scope of services!*)
- a photographic documentation of the vehicle



## Basis for the order

This product is based on the guidelines for vehicle returns and valuations published by Alphabet Fleet GmbH. The expert makes the specific findings in each individual case objectively, within the framework of the prescribed standards, based on their own expertise.

The vehicle inspection takes place in a fully assembled, unassembled state.

Damage or defects that can only be detected during disassembly/diagnostic work or through further investigation remain within the realm of prognostic risk. An increased risk exists due to concealed defects caused by fraudulent misrepresentation and which were not identifiable by the expert.

Damage or defects resulting from normal use or wear and tear of the vehicle will be accepted in accordance with the applicable standard.

There was no explicit identification or monetary consideration of the expected features within the product.

Features which, in their nature and extent, slightly exceed normal use but do not constitute unacceptable damage, will be documented and indicated as signs of wear, if applicable.

Damage or defects that, according to the applicable standard, can no longer be attributed to normal use or wear and tear are listed under "Value Reducing Factors" in the product description.

Depending on the product specification, a monetary ID can be provided. If this takes place, the costs can be 100% d or pro rata depending on the vehicle's age and mileage.

## Previous damages

No apparent prior damage that had been repaired could be found on the vehicle.

## Comments

-Der montierte Reifensatz ist kein Bestandteil des Auslieferungsumfangs.

-Felgen der Winterräder gehören zu den Sommerreifen



Figure 1: Diagonal front (left)



Figure 2: Diagonal front (right)



Figure 3: Diagonal rear (left)



Figure 4: Diagonal rear (right)



Figure 5: Interior - front



Figure 6: Interior - rear



Figure 7: Instrument cluster



Figure 8: Instrument panel



Figure 9: Interior 360° view



Figure 10: Cargo area



Figure 11: VIN



Figure 12: Mounted tyres

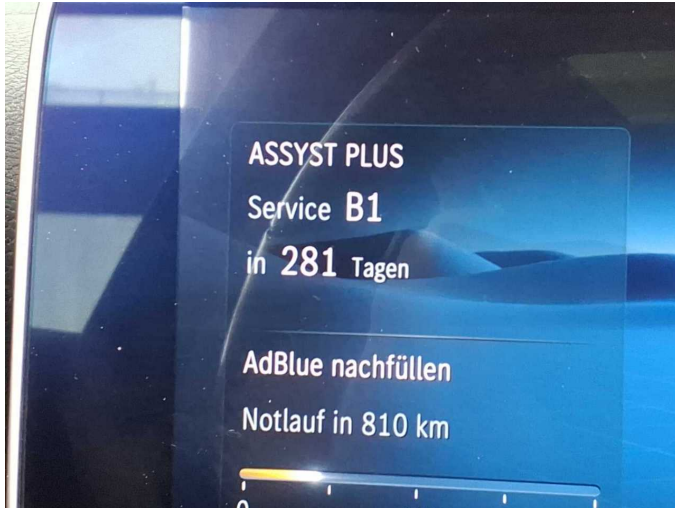


Figure 13: Documents



Figure 14: Documents



Figure 15: Additional tyres

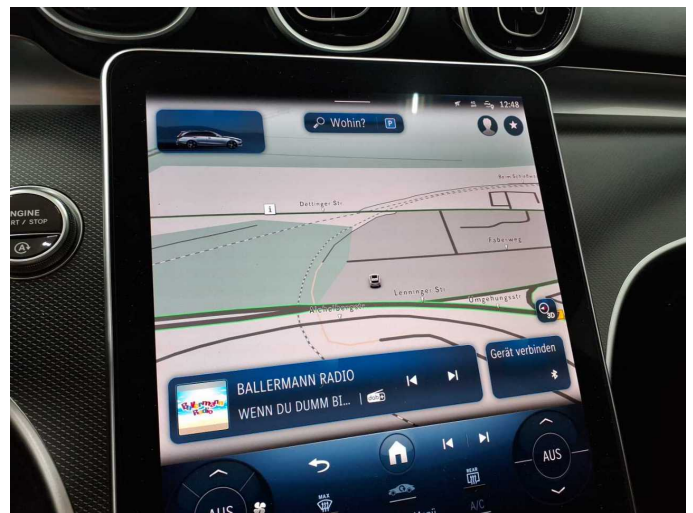


Figure 16: Navigation



Figure 17: Misc.



Figure 18: Misc.



Figure 19: Misc.

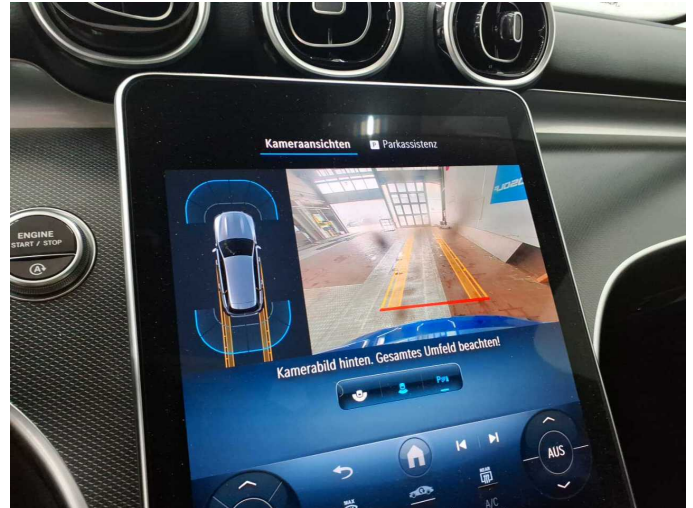


Figure 20: Misc.



Figure 21: Misc.

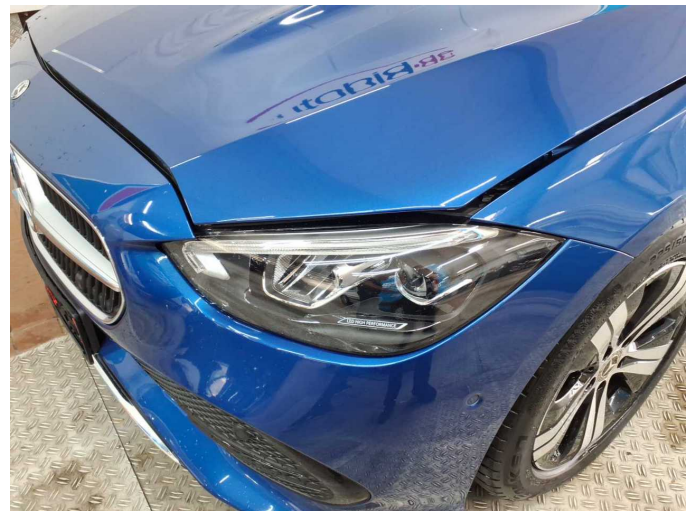


Figure 22: Misc.

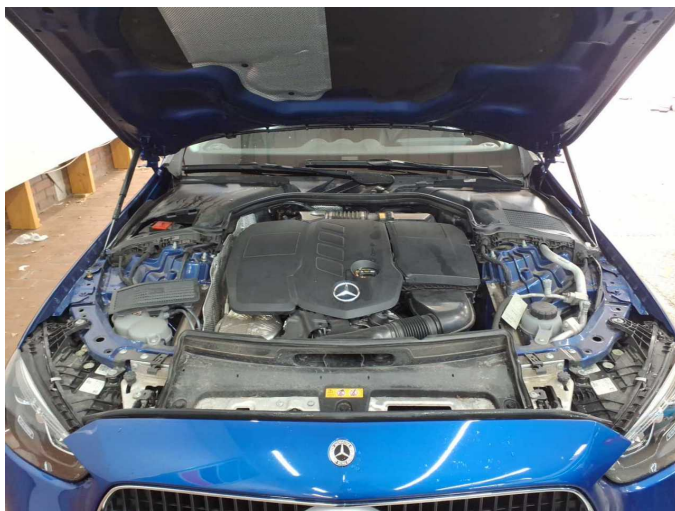


Figure 23: Misc.



Figure 24: Misc.



Figure 25: Misc.



Figure 26: Misc.

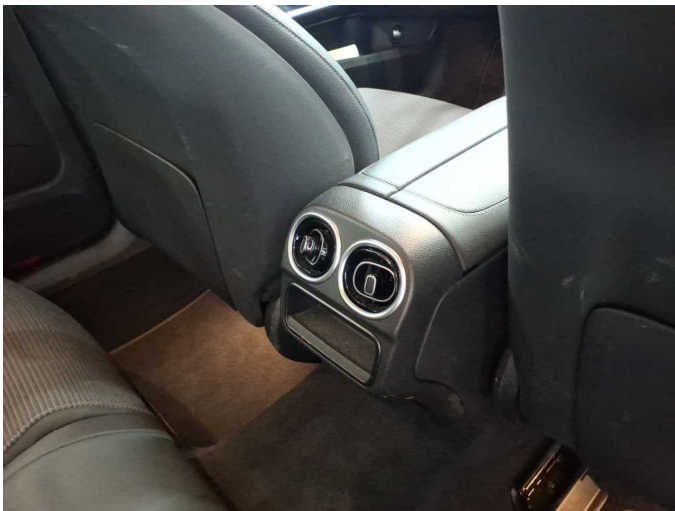


Figure 27: Misc.



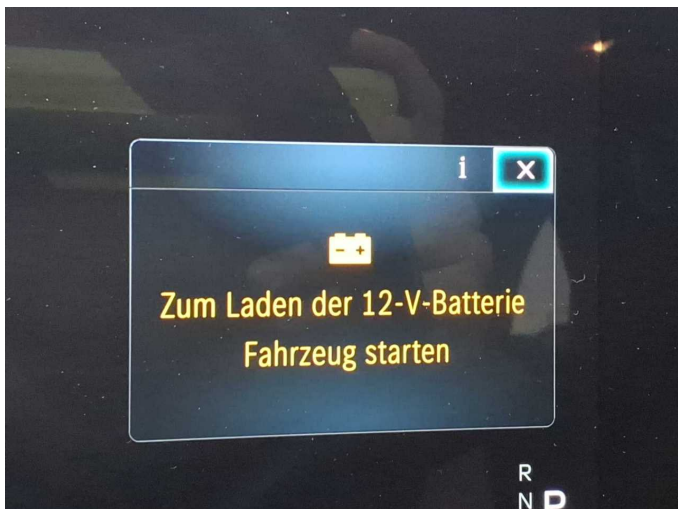
Figure 28: Misc.



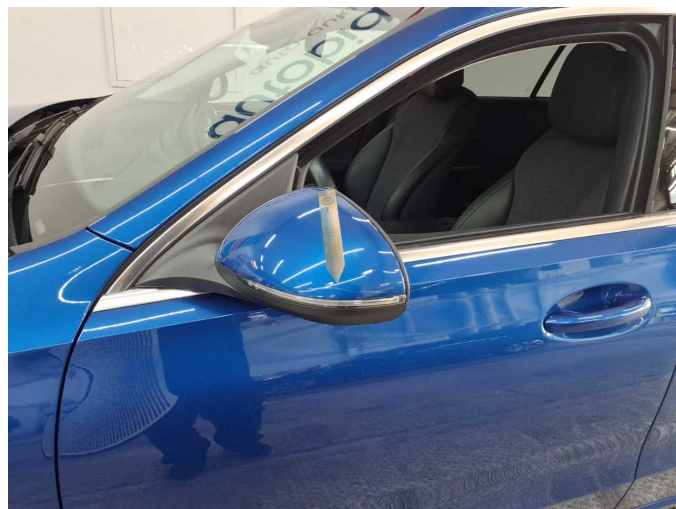
Figure 29: Misc.



Figure 30: Misc.



**Damage 1:** Electrical system: Battery - Empty - Perform diagnosis



**Damage 3:** Wing mirror - left side: Cap - Scratch(es) - Smart repair



**Damage 3:** Wing mirror - left side: Cap - Scratch(es) - Smart repair