

Expertise

Protocol number: 46201181
Order No. / Reference: 26154565
Inspection date: 17 Jun 2026

Manufacturer: Mercedes-Benz

Model: 317 CDI Sprinter Lang HA 9G-TRONIC PRO

VIN: W1V3KCFZ5TP845171



Vehicle details

Manufacturer / Type / Model / Equipment

Mercedes-Benz 317 CDI Sprinter Lang HA 9G-TRONIC PRO

Vehicle Identification number W1V3KCFZ5TP845171

Mileage (Read) 24,610 km

First registration 10 Jul 2025

Number of holders 1

Power / Engine displacement 125 kw / 1,950 ccm

Fuel type / Cylinder Diesel / 4

Gearbox / Number of gears Automatic / 9

Type of drive Rear drive

Type of vehicle Van

Colour / colour code Hightechsilber Metallic

Doors / Seats 4 / 3

Upholstery type Cloth

Colour of upholstery Black-Unknown

Type of use rental car



Vehicle details

Maintenance booklet / proof	digital proof / complete	Next maintenance in	380 Tag(e)
Key is / should be	2 / 2	FZG documents	ZB#2 (B) was available (copy), ZB#1 (S) was not available.
		Letter No.	HN431697
Previous damage / Accident	None detectable	Repainting	None detectable
Inspection conditions	sufficient	Lifting equipment / pit	yes
Test drive	Not performed	Engine function test	With complaint
Manufacturer key number/ type code number	2222 / BSU 30073		
Emission standard	EURO6;WLTP;EB;PI/CI;M, N1, N2	fine dust sticker	
Permitted total weight	3,500 kg	Empty weight	

Tyres

Mounted tyres

#	Tyre size	Type of tyre	Manufacturer	Tread depth
1)	235/65 R16 121R	Winter tyres on Steel rim with wheel cover	Continental	8mm / 8mm
2)	235/65 R16 121R	Winter tyres on Steel rim with wheel cover	Continental	7mm / 7mm

Legend: Tread depth information for the left tire is listed first, for the right tire it is listed second on the axle in the direction of travel.

TÜV SÜD Auto Partner GmbH
Wiesenring 2
04159 Leipzig

Inspection location
ARS Altmann AG Automobillogistik
Lilienthalstraße 2
29693 Hodenhagen



Equipment



Standard equipment

- Storage compartment above windshield
- Rear towing eye
- ADAPTIVE ESP (latest generation) with load- and speed-dependent driving dynamics control (Anti-lock Braking System (ABS) - Traction Control System (ASR) - Electronic Brakeforce Distribution (EBD) - Hydraulic Brake Assist (BAS) - Load Adaptive Control (LAC) - Roll Over Mitigation (ROM) - Roll Movement Intervention (RMI) - Enhanced Understeering Control (EUC) - Brake Disc Wiping/Drying (BDW) - Electronic Brake Prefill (EBP) - Easy Lane Change (ELC))
- Electrically folding exterior mirrors
- Battery: fleece battery 12 V / 92 Ah
- Brake assist, active
- Brake lights, adaptive
- Roof: High roof
- Diesel particulate filter and SCR
- Digital operating instructions
- Entry handle on rear right corner pillar
- Driving light assistant
- HVO-capable vehicle
- Generator 14 V / 250 A
- Transmission: 9G-TRONIC
- Seatbelt warning device for driver's seat
- Grab handle for entry of driver and passenger
- Main tank 93 liters
- Intelligent speed assistant
- Tempmatic controlled air conditioning
- Headrests (2), front
- Cable duct on side wall
- Steering wheel: Multifunction steering wheel
- Longitudinal beam reinforcement
- Mercedes-Benz emergency call system
- Without weight increase/decrease: 3,500 kg
- Breakdown Management (By pressing the breakdown button or via the phone book entry in the vehicle's address book, the disabled vehicle automatically establishes a voice connection with the Customer Assistance Center (CAC). It transmits the current location and all relevant vehicle information. The CAC staff immediately inform the nearest Mercedes-Benz Service24h, which dispatches a repair service.)
- Tire pressure monitoring (on front and rear axles (wireless))
- Wheels: Steel rims 6.5 J x 16
- Sliding door on the right, cargo/passenger compartment
- Power steering
- Seats: Driver's seat
- Jump start contact (The jump start contact facilitates jump-starting the vehicle and externally charging the starter battery. The contact is located in the engine compartment on the air filter box.)
- continuous partition wall
- Lashing eyes (according to DIN 7510-3 in the floor and in the B-pillars)
- Storage compartment under cockpit
- Axle ratio $i = 3.923$
- Passenger side airbag
- Driver's side airbag
- Active Lane Keeping Assist
- ATTENTION ASSIST (ATTENTION ASSIST can assist the driver on long, monotonous journeys by monitoring attention. If signs of fatigue or increasing inattention are detected, it suggests a break.)
- Electrically adjustable and heated exterior mirrors, left and right
- Outdoor temperature display
- Hill start assist
- third brake light
- COC documents
- Ceiling light in the cargo/passenger compartment (with door contact)
- Tachometer
- Electrical components for trailer socket
- Chassis stabilization level 1
- Electric window regulator for driver and passenger door
- Noise measures
- Seatbelt warning device for front passenger seat
- Grab handle for entry to the cargo area sliding door on the partition wall
- HOLD function
- Clothes hooks in the driver's cab
- Instrument cluster with color display
- Cable duct at rear portal
- Steering wheel adjustable for tilt and height
- Headlight range control
- Marker lights, side
- Navigation: Navigation pre-installation
- Package: Acoustics
- Upholstery: Cloth
- Radio: Digital Radio DAB
- Radio: MBUX multimedia system
- Radio accessories: Communication module (LTE) for digital services
- Rain sensor
- Tires: Tires without specified make
- Tires: Tires optimized for rolling resistance
- Wheels: Tires 235/65 R 16 C
- Wheels: Premium complete wheel protection (3 years)
- Rear view camera
- Crosswind Assist
- Seats: Passenger seat, two-seater
- Start-stop function
- USB 5V socket
- Speedometer km/h
- Cruise control
- Blind Spot Assist
- First aid kit
- Front axle with increased load capacity



- Warning triangle
- Elimination of vehicle lowering
- Heat-insulating glass with band filter on the windshield
- Approval N1

- Pre-installation for Remote Services Plus
- Immobiliser
- Parking light removed
- Central locking with radio remote control
- Registration certificate, Part II

Extra equipment

- Storage for smartphones including wireless charging
- All-weather floor mats
- Interior lining of the cargo area up to roof height, washable in conjunction with partition wall, continuous along pillar C
- Load securing: Lashing rails on the side wall to the side railing.
- Package: Parking package with 360° camera (Parking Assistant Rear Cross Traffic Alert Drive Away Assist)
- Wheel arch loadable
- Seats: Driver's seat armrest
- Seats: Suspension seat comfort version, driver's seat
- Long-throw nozzles in I-panel
- Vehicle pre-installation for trailer load up to 3500 kg
- Wooden floor (cargo area)
- Hinged lid for storage compartment
- Paint finish: Metallic
- Load anchoring rail system
- LED light strip in the cargo area
- Radio: MBUX multimedia system with 10.25-inch touchscreen
- Tires: M+S tires
- Seats: Driver's seat box, low
- Phone: Smartphone integration package

Brief expert findings

Documents submitted	At the time of the inspection, the vehicle registration certificate Part 2 (title) was available, but the vehicle registration certificate Part 1 (document) was not. (Copy)
VIN comparison	The vehicle identification number (VIN) was read from the vehicle and its conformity with the submitted documents was confirmed by the undersigned during the inspection.
Inspection	The inspection conditions were sufficient for the assessment of the vehicle. Lifting equipment and/or a pit were available for examining the vehicle.
Test drive	No test drive/shunting maneuver was carried out during the inspection of the vehicle.
Engine function test	An engine test run was performed, problem has been detected This is due to the following reason.: Motorkontrolleuchte aktiv

Value reducing factors

No.	Component group	Description
1	Seat - front	Seat cover - left side - Clean
2	Instrument panel	Glove box - Scratch(es) - Loss in value
3	Door - front right side	Door - Scratch(es) - Smart repair
4	Rear bumper	Rear bumper - Scratched - Loss in value
5	Side panel - rear right side	Protection strip - Broken / torn - Replace
6	Tail light	Tail lamp - left side - Scratch(es) - Replace
7	Sliding door, right	Protection strip - Scratched - Replace
8	Trim / covers	Boot lid - interior trim - Scratched - Replace
9	Instrument panel	Indicator light (Motorkontrolle) - on - Perform diagnosis
10	Side panel - rear left side	Interior trim - Holes - Replace
11	Side panel - rear right side	Sill - Dent / paintcoat damage - Repair and paint
12	Boot lid / rear door	Boot lid - Dent / paintcoat damage - Repair and paint
13	Sliding door, right	Sliding door - Dent / paintcoat damage - Repair and paint



Wear and tear

No.	Component group	Description
1	Vehicle glazing	Windscreen - Stone chips - No deduction
2	Body	B-pillar - right side - Scratch(es) - No deduction
3	Interior	Separation net - Dent / paintcoat damage - No deduction
4	Rear of vehicle	Boot floor - Scratch(es) - No deduction
5	Front bumper	Front bumper - Scratch(es) - No deduction

The vehicle shows signs of wear and tear commensurate with its age and use.

Paint coat thickness measurement

Roof	90 µm	Roof rail - left side	102 µm
Roof rail - right side	99 µm	Boot lid / rear door	89 µm
Mudguard - left side	121 µm	Mudguard - right side	110 µm
Bonnet	105 µm	Side panel - rear left side	87 µm
Side panel - rear right side	88 µm	Door - rear left side	100 µm
Door - rear right side	103 µm	Door - front left side	110 µm
Door - front right side	102 µm		

Order/Scope of Order

An order was placed to prepare a sales report for the described vehicle. This report includes the following:

- Description of key vehicle information
- Documentation of equipment features
(*Delivery by third-party service providers*)
- Documentation of damage, defects, missing parts
- Documentation of prior damage, unrepaired prior damage, repainting
- A brief visual or functional inspection of the equipment details, if possible.
(*Functional testing of driver assistance systems is not included in the scope of services!*)
- a photographic documentation of the vehicle

Basis for the order

This product is based on the guidelines for vehicle returns and valuations of light commercial vehicles published by Alphabet Fleet Management GmbH. The expert makes the specific findings in each individual case objectively, within the framework of the prescribed standards, based on their own expertise.

The vehicle inspection takes place in a fully assembled, unassembled state.

Damage or defects that can only be detected during disassembly/diagnostic work or through further investigation remain within the realm of prognostic risk. An increased risk exists due to concealed defects caused by fraudulent misrepresentation and which were not identifiable by the expert.

Damage or defects resulting from normal use or wear and tear of the vehicle will be accepted in accordance with the applicable standard.

There was no explicit identification or monetary consideration of the expected features within the product.

Features which, in their nature and extent, slightly exceed normal use but do not constitute unacceptable damage, will be documented and indicated as signs of wear, if applicable.

Damage or defects that, according to the applicable standard, can no longer be attributed to normal use or wear and tear are listed under "Value Reducing Factors" in the product description.

Depending on the product specification, a monetary ID can be provided. If this takes place, the costs can be 100% d or pro rata depending on the vehicle's age and mileage.



Previous damages

No apparent prior damage that had been repaired could be found on the vehicle.



Figure 1: Diagonal front (left)



Figure 2: Diagonal front (right)



Figure 3: Diagonal rear (left)



Figure 4: Diagonal rear (right)

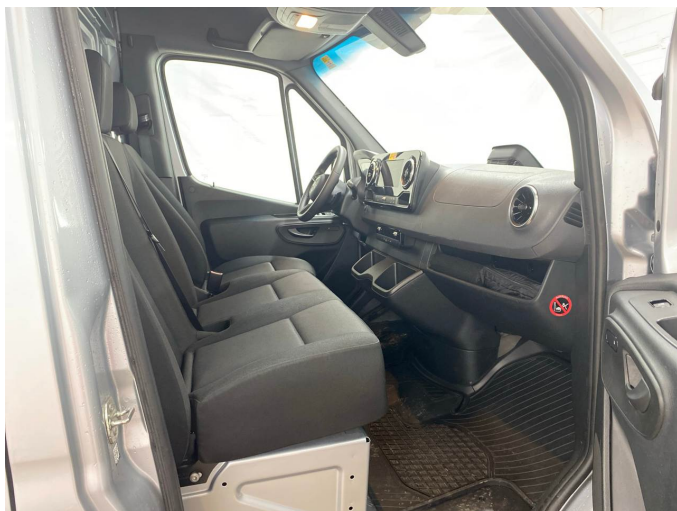


Figure 5: Interior - front



Figure 6: Interior - rear



Figure 7: Instrument cluster



Figure 8: Instrument panel



Figure 9: Interior 360° view



Figure 10: Cargo area



Figure 11: VIN



Figure 12: Mounted tyres



Figure 13: Mounted tyres



Figure 14: Documents



Figure 15: Misc.



Figure 16: Misc.

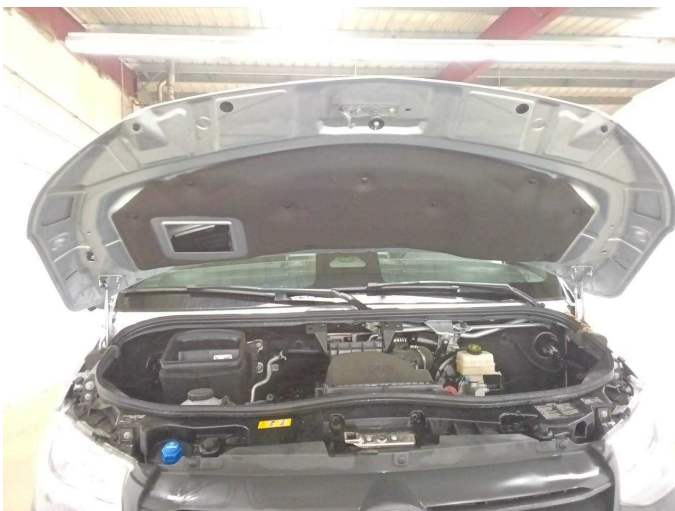


Figure 17: Misc.



Figure 18: Misc.



Figure 19: Misc.



Figure 20: Misc.

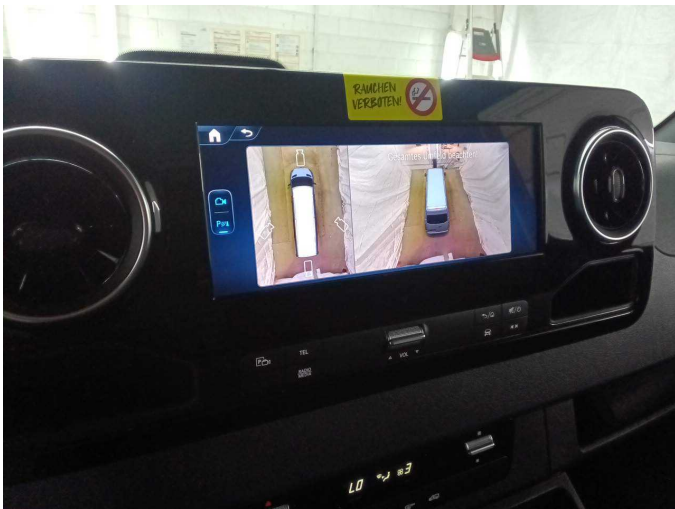
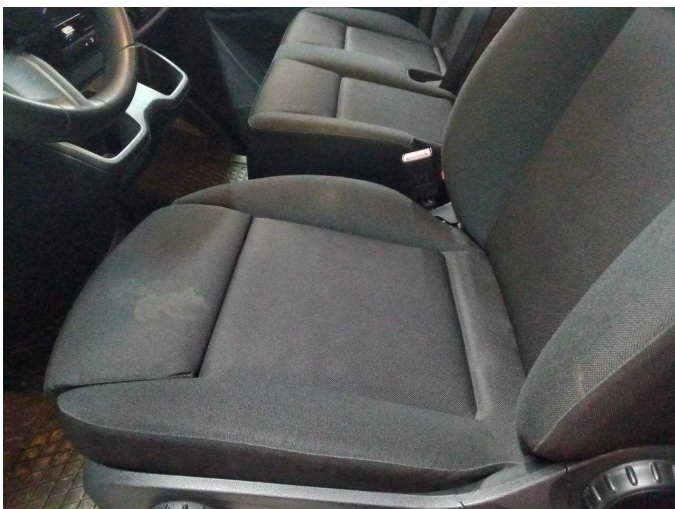


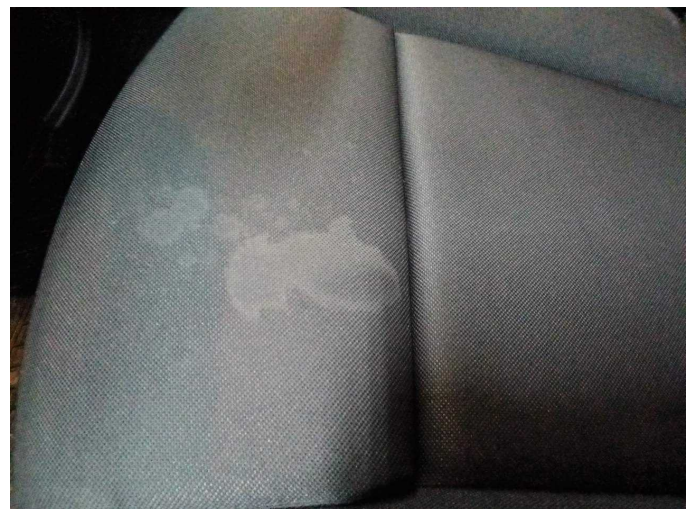
Figure 21: Misc.



Figure 22: Misc.



Damage 1: Seat - front: Seat cover - left side - Clean



Damage 1: Seat - front: Seat cover - left side - Clean



Damage 2: Instrument panel: Glove box - Scratch(es) - Loss in value



Damage 2: Instrument panel: Glove box - Scratch(es) - Loss in value



Damage 3: Door - front right side: Door - Scratch(es) - Smart repair



Damage 3: Door - front right side: Door - Scratch(es) - Smart repair



Damage 4: Rear bumper: Rear bumper - Scratched - Loss in value



Damage 4: Rear bumper: Rear bumper - Scratched - Loss in value



Damage 4: Rear bumper: Rear bumper - Scratched - Loss in value



Damage 4: Rear bumper: Rear bumper - Scratched - Loss in value



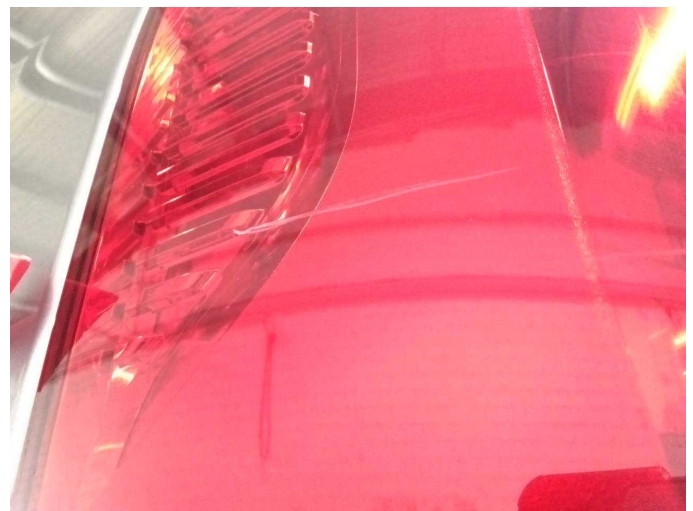
Damage 5: Side panel - rear right side: Protection strip - Broken / torn - Replace



Damage 5: Side panel - rear right side: Protection strip - Broken / torn - Replace



Damage 6: Tail light: Tail lamp - left side - Scratch(es) - Replace



Damage 6: Tail light: Tail lamp - left side - Scratch(es) - Replace



Damage 7: Sliding door, right: Protection strip - Scratched - Replace



Damage 7: Sliding door, right: Protection strip - Scratched - Replace



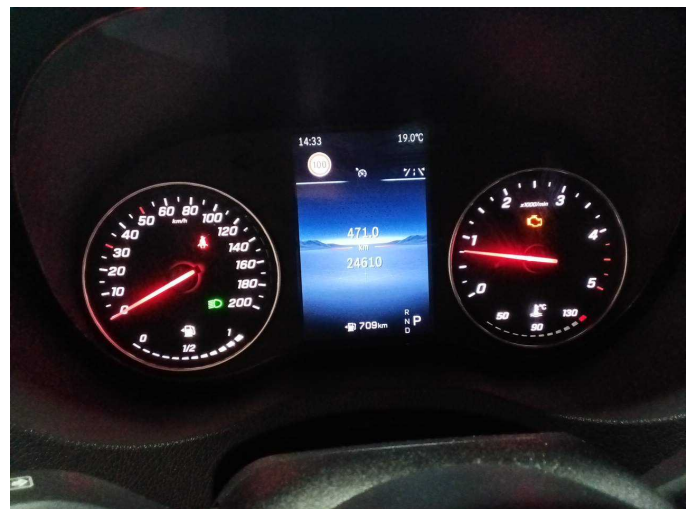
Damage 7: Sliding door, right: Protection strip - Scratched - Replace



Damage 8: Trim / covers: Boot lid - interior trim - Scratched - Replace



Damage 8: Trim / covers: Boot lid - interior trim - Scratched - Replace



Damage 9: Instrument panel: Indicator light (Motorkontrolle) - on - Perform diagnosis



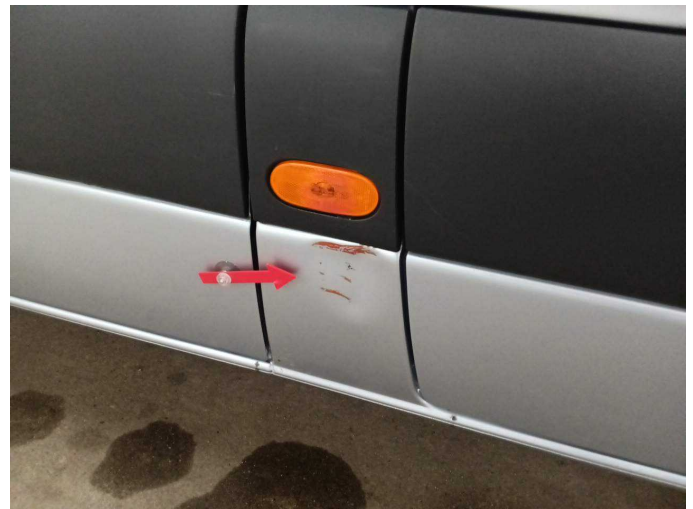
Damage 10: Side panel - rear left side: Interior trim - Holes - Replace



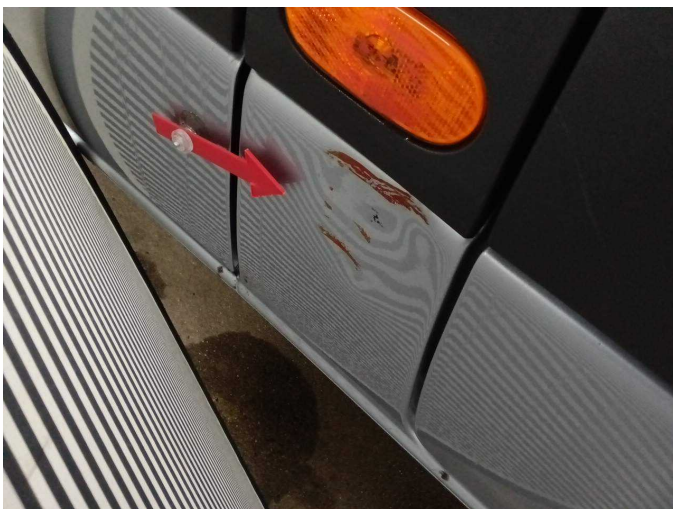
Damage 10: Side panel - rear left side: Interior trim - Holes - Replace



Damage 10: Side panel - rear left side: Interior trim - Holes - Replace



Damage 11: Side panel - rear right side: Sill - Dent / paintcoat damage - Repair and paint



Damage 11: Side panel - rear right side: Sill - Dent / paintcoat damage - Repair and paint



Damage 12: Boot lid / rear door: Boot lid - Dent / paintcoat damage - Repair and paint



Damage 12: Boot lid / rear door: Boot lid - Dent / paintcoat damage - Repair and paint



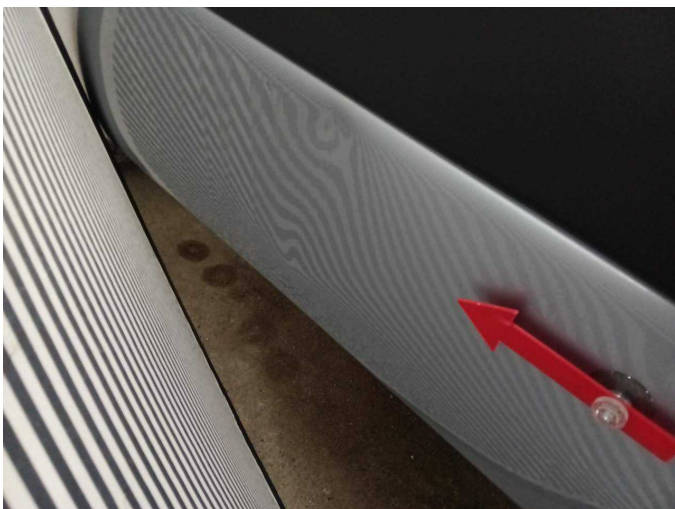
Damage 13: Sliding door, right: Sliding door - Dent / paintcoat damage - Repair and paint



Damage 13: Sliding door, right: Sliding door - Dent / paintcoat damage - Repair and paint



Damage 13: Sliding door, right: Sliding door - Dent / paintcoat damage - Repair and paint



Damage 13: Sliding door, right: Sliding door - Dent / paintcoat damage - Repair and paint