

Expertise

Protocol number: 46201929
Order No. / Reference: 26308795
Inspection date: 19 Jun 2026

Manufacturer: Alfa Romeo

Model: Stelvio 2.2 Diesel 16V AT8 Q4 Super

VIN: ZARPAHBXXM7D13941



Vehicle details

Manufacturer / Type / Model / Equipment

Alfa Romeo Stelvio 2.2 Diesel 16V AT8 Q4 Super

Vehicle Identification number ZARPAHBXXM7D13941

Mileage (Read) 40,888 km

First registration 27 May 2021

Number of holders 1

Next periodical technical inspection 06/2026
(Report not on hand)

Power / Engine displacement 140 kw / 2,143 ccm

Fuel type / Cylinder Diesel / 4

Gearbox / Number of gears Automatic / 8

Type of drive All-wheel drive

Type of vehicle SUV

Colour / colour code Bianco Alfa

Doors / Seats 5 / 5

Upholstery type Cloth / leather
combination

Colour of upholstery Black



Vehicle details

Maintenance booklet / proof	digital evidence / incomplete	Next maintenance in	0 Tag(e)
Last service on / at	06/2025 at 33,751 km		
Key is / should be	2 / 2	FZG documents	ZB#2 (B) was available (copy), ZB#1 (S) was not available.
		Letter No.	GA301020
Previous damage / Accident	Detectable	Repainting	Detectable
Inspection conditions	sufficient	Lifting equipment / pit	yes
Test drive	Not performed	Engine function test	Performed
Manufacturer key number/ type code number	1742 / ABS 00007		
Emission standard	EURO6;WLTP;AP;PI/CI; M, N1 I	fine dust sticker	
Permitted total weight	2,410 kg	Empty weight	

Tyres

Mounted tyres

#	Tyre size	Type of tyre	Manufacturer	Tread depth
1)	235/55 R19 105Y	Summer tyres on Light alloy	Pirelli	5mm / 5mm
2)	235/55 R19 105Y	Summer tyres on Light alloy	Pirelli	5mm / 5mm

Additional tyres

#	Tyre size	Type of tyre	Manufacturer	Tread depth
1)	235/60 R18 107H	Winter tyres on Light alloy	Bridgestone	4mm / 4mm
2)	235/60 R18 107H	Winter tyres on Light alloy	Bridgestone	6mm / 6mm

Replacement

Typ	Tyre size	Type of tyre	Manufacturer	Tread depth
N	195/75 R18 106P	Summer tyres on Steel	Vredestein	4 mm

Legend: Tread depth information for the left tire is listed first, for the right tire it is listed second on the axle in the direction of travel.

TÜV SÜD Auto Partner GmbH
Gutenbergstraße 13
70771 Leinfelden-Echterdingen

Inspection location
Hartmann Fleet Professionals GmbH
Leerenstraße 25
29683 Bad Fallingbommel



Equipment



Standard equipment

- Airbag: Front airbags driver and passenger side (2-stage - passenger airbag can be deactivated)
- Alfa Connected Services (My:Assistant: Warning messages and assistance in the event of an accident or technical malfunction with your Alfa Romeo. - My:RemoteControl: Allows you to locate and control your vehicle at any time. - My:Car: Monitoring and maintenance for your Alfa Romeo.)
- On-board computer
- Brake system (Brembo 4-piston brake calipers, front brake discs 330mm x 28mm thickness - Continental 1-piston brake calipers, rear brake discs 320mm x 22mm thickness)
- Diesel particulate filter (DPF)
- Tachometer
- Electric tailgate
- Alfa DNA driving dynamics control, adjustable in 3 stages (Dynamic / Natural / Advanced Efficiency)
- Window frame with chrome-look trim
- Cruise control, active (ACC)
- Back window, heater
- Interior mirror automatically dimming
- ISOFIX child seat attachments in the rear (on the outer seats)
- Automatic climate control, two zones, separately adjustable
- Forward Collision Warning (FCW) system with autonomous emergency braking (AEB)
- Front headrests
- Headrests: Rear (3) (height adjustable)
- Paint finish: Solid
- Heated steering wheel
- Steering wheel: Steering wheel and gearshift lever covered in imitation leather (with black engine start button, lower spokes in aluminum look, steering wheel flattened at the bottom).
- Light and rain sensor
- Front and rear parking sensors (with acoustic warning message and display)
- Alfa Connect 8.8" radio (8.8" touchscreen - FM/AM radio - USB and Aux port - Bluetooth hands-free calling and audio streaming - Rotary pad operation - Voice control - Hi-Fi audio system, 8 speakers: 4 x 165 mm mid-bass drivers, 20 watts RMS power, 4 x 25 mm tweeters, 15 watts RMS power)
- Radio accessories: Apple CarPlay / Android Auto
- Tire pressure sensors (TPMS)
- Leather-covered gearshift lever
- Heated windshield washer nozzles
- Keyless engine start function
- Front and rear seat belts with belt tensioners and belt force limiters (Seat Belt Control System (SBR))
- Seats: Rear bench seat split and foldable (40/20/40)
- Seats: Heated front seats
- Lane Departure Warning (LDW)
- Airbag: Head airbags (front and rear)
- Airbag: Side airbag for driver and front passenger
- Alfa Q4 logo, on the rear tailgate
- Alfa Q4 all-wheel drive with transfer case (ATC)
- Electrically adjustable and heated exterior mirrors
- Exterior mirror caps in car color with integrated LED indicator
- Bi-Xenon headlights (35W) (with dynamic cornering and turning lights, headlight washers and LED daytime running lights)
- third brake light
- Headliner and pillars in grey
- Decorative trim strips on dashboard, center console and doors: matte black brushed finish
- Aluminum door sill plates (with Alfa Romeo lettering)
- Electromechanical parking brake
- Vehicle information center with 7" TFT color screen
- Electric windows front and rear
- Floor mats
- Transmission: 8-speed automatic transmission
- rear window wiper
- Integrated Braking System (IBS) (Anti-lock Braking System (ABS) - Traction Control System (ASR) - Automatic Hazard Warning System (AHW) - Active Yaw Control (AYC) - Electronic Brake Assist (EBA) - Electronic Brakeforce Distribution (EBD) - Engine Drag Torque Control (EDC) - Electronic Stability Control (ESC) - Cornering Brake Control (ESBC) - Hill Start Assist (HSA) - Rain Brake Assist (RBA) - Trailer Stability Assist (TSA))
- LED taillights
- Steering wheel: Steering wheel with engine start button (flattened at the bottom, lower spokes in aluminum look)
- Steering wheel: Multifunction buttons on the steering wheel
- Steering column mechanically adjustable (in height and length)
- Front center armrest (covered in synthetic leather, with storage compartment)
- Upholstery: Comfort seats with fabric/leather seat covers (lower side of the dashboard, door panels and center armrest color-coordinated)
- Radio: Digital radio reception (DAB)
- Radio: Hi-Fi audio system (8 speakers: 4 x 165 mm mid-bass drivers, 20 watts RMS power; 4 x 25 mm tweeters, 15 watts RMS power)
- Fix&Go tire repair kit
- Reversing camera with dynamic guidelines (including front and rear parking sensors, with acoustic warning message and display)
- Electric power steering with Dynamic Steering Torque (DST)
- Seats: Driver and front passenger seats are electrically adjustable in 6 ways (length, tilt, height with lumbar support and memory function on the driver's side)
- Start & Stop system
- Rear bumper with underride protection (dual exhaust system (left and right))
- Central locking with remote control



- Power outlets: 2nd USB port in the front and USB port in the rear (charging function only)
- Electronic immobilizer

Extra equipment

- Detachable towbar
- Paint finish: Solid color Bianco Alfa
- Package: Assistance 2 (Super) (High Beam Assist (AHB) - Active Blind Spot Assist (ABSA) - Automatically Dimming Exterior Mirrors - Active Lane Keeping Assist (LKA) - Driver Attention Assist (DAA) - Active Cruise Control (ACC) - Intelligent Traffic Sign Recognition (TSR) - Intelligent Speed Control (ISC) - Traffic Jam Assist (TJA) - Highway Assist (HWA) - Sport Design Steering Wheel and Gearshift Lever with Perforated Leather)
- Rear window and rear side windows tinted
- Alfa Connect 8.8" 3D navigation system (with touchscreen and Bluetooth with European map data - 8.8" color screen with split-screen function - navigation with European map data)
- Package: Comfort (Keyless Entry system - Exterior door handle lighting - Air Quality System (AQS) - Windscreen with infrared protection)
- Wheels: 19" Classico alloy wheels (8J x 19, 235/55 R 19, 101Y)

Brief expert findings

Documents submitted	At the time of the inspection, the vehicle registration certificate Part 2 (title) was available, but the vehicle registration certificate Part 1 (document) was not. (Copy)
VIN comparison	The vehicle identification number (VIN) was read from the vehicle and its conformity with the submitted documents was confirmed by the undersigned during the inspection.
Inspection	The inspection conditions were sufficient for the assessment of the vehicle. Lifting equipment and/or a pit were available for examining the vehicle.
Test drive	No test drive/shunting maneuver was carried out during the inspection of the vehicle.
Engine function test	An engine test run was performed.

Value reducing factors

No.	Component group	Description
1	Misc.	Main inspection - No evidence - No deduction
2	Seat - rear	Upholstery (Abdruck) - Deformed - Loss in value
3	Misc.	Inspection / maintenance - Due - Perform

Wear and tear

No.	Component group	Description
1	Wheel / tyres	Tyre - front right side - Scratched - No deduction
2	2nd wheel set	2 tyres (über 4mm) - No deduction

The vehicle shows signs of wear and tear commensurate with its age and use.

Previous damages

No.	Previous damage	Extent of damage (Net)
1	Rear, Provided by user / customer, from 28 Jun 2022	969,36 €
2	Front, Provided by user / customer, from 1 Sept 2023	1.226,71 €
3	Rear, Side right, Provided by user / customer, from 10 Mar 2024	5.227,71 €

Repainting

No.	Repainting
1	Boot lid / rear door, Bonnet, Side panel - rear right side, Professionally carried out, Invoice of repair done Non-existent



Paint coat thickness measurement

Boot lid / rear door	313 µm	Bonnet	189 µm
Side panel - rear right side	1,320 µm		

Order/Scope of Order

An order was placed to prepare a sales report for the described vehicle. This report includes the following:

- Description of key vehicle information
- Documentation of equipment features
(*Delivery by third-party service providers*)
- Documentation of damage, defects, missing parts
- Documentation of prior damage, unrepaired prior damage, repainting
- A brief visual or functional inspection of the equipment details, if possible.
(*Functional testing of driver assistance systems is not included in the scope of services!*)
- a photographic documentation of the vehicle

Basis for the order

This product is based on the guidelines for vehicle returns and valuations published by Alphabet Fleet GmbH. The expert makes the specific findings in each individual case objectively, within the framework of the prescribed standards, based on their own expertise.

The vehicle inspection takes place in a fully assembled, unassembled state.

Damage or defects that can only be detected during disassembly/diagnostic work or through further investigation remain within the realm of prognostic risk. An increased risk exists due to concealed defects caused by fraudulent misrepresentation and which were not identifiable by the expert.

Damage or defects resulting from normal use or wear and tear of the vehicle will be accepted in accordance with the applicable standard.

There was no explicit identification or monetary consideration of the expected features within the product.

Features which, in their nature and extent, slightly exceed normal use but do not constitute unacceptable damage, will be documented and indicated as signs of wear, if applicable.

Damage or defects that, according to the applicable standard, can no longer be attributed to normal use or wear and tear are listed under "Value Reducing Factors" in the product description.

Depending on the product specification, a monetary ID can be provided. If this takes place, the costs can be 100% d or pro rata depending on the vehicle's age and mileage.

Previous damages

According to available information previous damages were repaired at the vehicle. Traces of repairs, which allow conclusions about the area of repair, were not recognizable during the inspection.

Comments

- Der Winterradsatz ist kein Bestandteil der Ausstattungsliste.



ALPHABET

Figure 1: Diagonal front (left)



ALPHABET

Figure 2: Diagonal front (right)



ALPHABET

Figure 3: Diagonal rear (left)



ALPHABET

Figure 4: Diagonal rear (right)



Figure 5: Interior - front



Figure 6: Interior - rear



Figure 7: Instrument cluster



Figure 8: Instrument panel



Figure 9: Interior 360° view



Figure 10: Cargo area

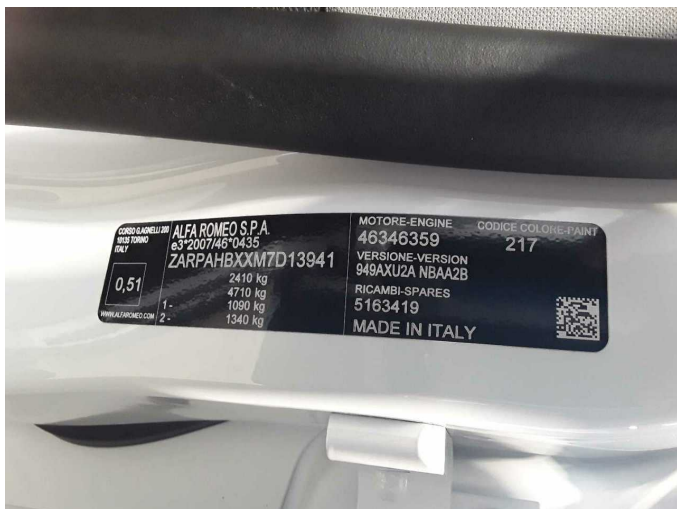


Figure 11: VIN



Figure 12: Mounted tyres



Figure 13: Documents



Figure 14: Additional tyres



Figure 15: Additional tyres



Figure 16: Navigation



Figure 17: Misc.



Figure 18: Misc.



Figure 19: Misc.



Figure 20: Misc.



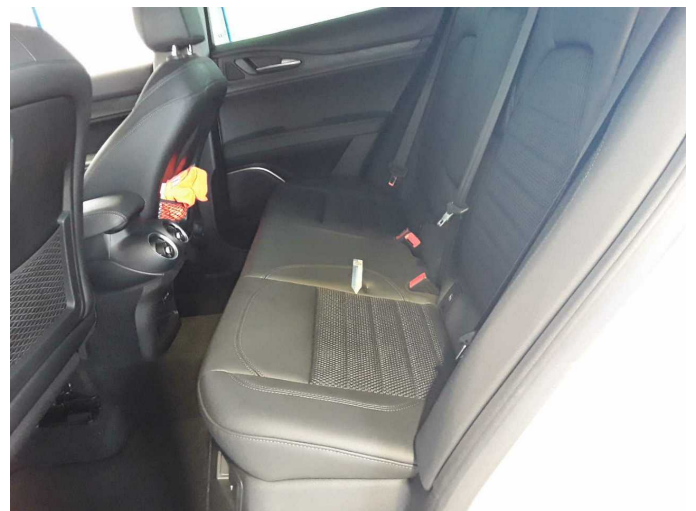
Figure 21: Misc.



Figure 22: Misc.



Figure 23: Misc.



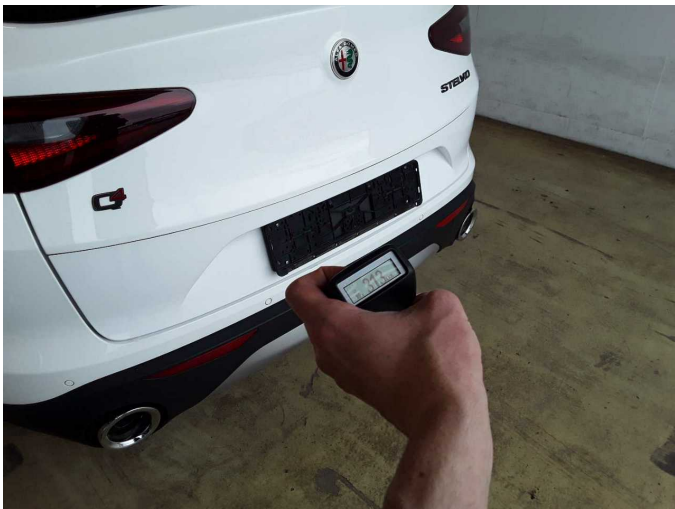
Damage 2: Seat - rear: Upholstery (Abdruck) - Deformed - Loss in value



Damage 2: Seat - rear: Upholstery (Abdruck) - Deformed - Loss in value



Damage 3: Misc.: Inspection / maintenance - Due - Perform



Repainting 1: Boot lid / rear door, Bonnet, Side panel - rear right side



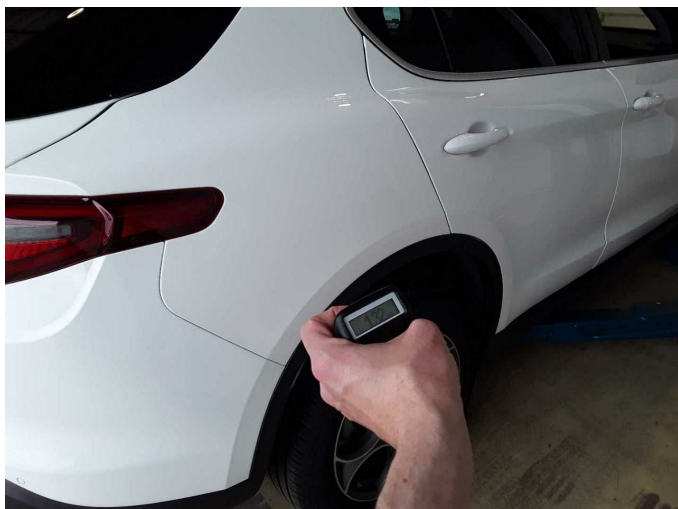
Repainting 1: Boot lid / rear door, Bonnet, Side panel - rear right side



Repainting 1: Boot lid / rear door, Bonnet, Side panel - rear right side



Repainting 1: Boot lid / rear door, Bonnet, Side panel - rear right side



Repainting 1: Boot lid / rear door, Bonnet, Side panel - rear right side



Repainting 1: Boot lid / rear door, Bonnet, Side panel - rear right side



Wartungshistorie

(gemäß Auftraggeber Informationen)

Fahrgestellnummer: ZARPAHBXXM7D13941

Hersteller / Modell: ALFA ROMEO ALFA ROMEO Stelvio 2.2 Diesel 16V AT8 Q4 Super

Datum	KM-Stand	Beschreibung
16.06.2025	33.751	Regelwartungsdienst
05.06.2024	26.337	HU + AU; Kraftstofffilter ern; Luftfiltereinsatz ern; Motoröl b. Wartung; Ölfilter ern; Ölwechsel; Regelwartungsdienst; Wartung Sonstiges
07.06.2023	20.756	Bremsflüssigkeit; Motoröl b. Wartung; Ölfilter ern; Regelwartungsdienst; Wartung Sonstiges
14.07.2022	10.496	Motoröl b. Wartung; Ölfilter ern; Regelwartungsdienst; Wartung Sonstiges