

Expertise

Protocol number: 46185286
Order No. / Reference: 26482847
Inspection date: 26 Jun 2026

Manufacturer: Audi

Model: Q7 55 TFSI e quattro tiptronic

VIN: WAUZZZ4M0MD031565



Vehicle details

Manufacturer / Type / Model / Equipment

Audi Q7 55 TFSI e quattro tiptronic

Vehicle Identification number WAUZZZ4M0MD031565

Mileage (Read) 90,220 km

First registration 5 May 2021

Number of holders 1

Next periodical technical inspection 04/2028
(Report on hand)

Power / Engine displacement 250 kw / 2,995 ccm

Fuel type / Cylinder Hybr.B/E ext.auf1 / 6

Gearbox / Number of gears Automatic / 8

Type of drive All-wheel drive

Type of vehicle SUV

Colour / colour code Samuraigrau Metallic

Doors / Seats 5 / 5

Upholstery type Alcantara / Leather

Colour of upholstery Grey-Black



Vehicle details

Maintenance booklet / proof	digital proof / complete	Next maintenance in	28,800 km
Last service on / at	05/2026 at 89,909 km		
Key is / should be	3 / 3	FZG documents	ZB#2 (B) was available (copy), ZB#1 (S) was not available.
		Letter No.	GC208938
Previous damage / Accident	None detectable	Repainting	None detectable
Inspection conditions	sufficient	Lifting equipment / pit	No
Test drive	Not performed	Engine function test	Performed
Manufacturer key number/ type code number	0588 / BSH 00175		
Emission standard	EURO6;WLTP;AP;PI/CI; M, N1 I	fine dust sticker	
Permitted total weight	3,145 kg	Empty weight	

Tyres

Mounted tyres

#	Tyre size	Type of tyre	Manufacturer	Tread depth
1)	255/55 R19 111H	Winter tyres on Light alloy	Continental	3mm / 3mm
2)	255/55 R19 111H	Winter tyres on Light alloy	Continental	3mm / 3mm

Additional tyres

#	Tyre size	Type of tyre	Manufacturer	Tread depth
1)	285/45 R20 112Y	Summer tyres on Light alloy	Continental	6mm / 6mm
2)	285/45 R20 112Y	Summer tyres on Light alloy	Continental	4mm / 4mm

Legend: Tread depth information for the left tire is listed first, for the right tire it is listed second on the axle in the direction of travel.



Equipment

Standard equipment

- Airbag for driver and front passenger
- Acoustic vehicle warning system
- Anti-lock braking system (ABS)
- Audi connect emergency call & service with Audi connect Remote & Control
- Audi virtual cockpit with 12.3" color display
- Exterior mirror housings painted in body color
- Vehicle tool kit
- Fabric headliner
- Black roof rails
- Parking aid plus with surround view
- Electronic Stability Control (ESC)
- Cruise control system including speed limiter
- Household plug type E/F (mains connection cable (length 1.6 m, current 10 A) with angled household plug type E/F for the e-tron compact charging system)
- Interior lighting
- Interior mirror with automatic dimming, frameless
- Camera-based traffic sign recognition
- ISOFIX and Top Tether child seat attachment
- Front headrests
- AC Type 2 charging socket
- Manual cargo cover
- Compact charging system (The e-tron compact charging system is designed for charging at wall sockets. It consists of a control unit with a vehicle connection cable (4.5 m) and a mains connection cable with a household or industrial plug. The charging power depends on the supplied industrial plug and market-specific power grid characteristics and can be up to 7.4 kW.)
- front center armrest
- MMI touch response
- Otto particulate filter
- Wheel: Tire repair kit
- Radio accessories: Digital radio reception (DAB)
- Rail system in the luggage compartment with variable lashing eyes
- Front seat heating
- Lane Departure Warning
- Stationary air conditioning
- Bumper: Bumper
- Separation net
- Glazing: Windscreen in heat-insulating glazing
- Electronic immobilizer
- Airbag: Front side airbags and head airbag system
- All-wheel drive "quattro" with self-locking center differential
- Audi connect navigation & infotainment
- Audi drive select
- Audi pre sense front
- Electrically adjustable, heated and folding exterior mirrors
- Control buttons in black glass look with haptic feedback and extended aluminum look
- Roof spoiler including 3rd brake light
- Decorative inlays: Diamond lacquer silver-grey
- Door sills with aluminum inlay
- front and rear floor mats
- Transmission: 8-speed automatic transmission tiptronic
- rear window wiper
- Industrial plug CEE 16A / 400V / long+straight (for the e-tron charging system mains connection cable (length 1.6 m) with industrial plug CEE 16 A, three-phase, red, straight version, for the e-tron charging system compact)
- Child lock
- 3-zone automatic climate control
- Fuel tank (75 liters)
- Mode 3 charging cable (charging cable for charging at public AC charging stations (Type 2). The cable connects the charging station to the vehicle's AC charging port and enables a charging power of up to 7.4 kW at your vehicle.)
- LED taillights
- LED headlights
- Steering wheel: Leather steering wheel in 3-spoke design with multifunction plus
- Steering column, manually adjustable in height and axis
- MMI Navigation plus with MMI touch response
- Non-smoking version
- Wheel: Tire pressure monitoring system
- Radio accessories: Audi music interface
- Rear seat/backrest split folding
- Seat covers: Leather/synthetic leather mono.pur 550 combination
- Sun visor with illuminated makeup mirror on driver and passenger side
- Start-stop system
- Phone: Bluetooth interface
- First aid kit with warning triangle
- Glazing: Green tinted thermal insulation glazing
- Central locking with remote control



Extra equipment

- Adaptive windscreen wipers with integrated washer nozzles (The adaptive windscreen wiper system improves visibility in all weather conditions. The cleaning fluid is sprayed directly in front of the wiper blades and wiped away almost instantly, ensuring optimal visibility even during wiping. The system is heated.)
- Black Optics Package (adds black accents to the exterior, including the Audi Singleframe grille, the trim strips on the side windows, the side door inserts, and the front and rear bumpers. The roof rails are finished in black).
- Chassis: Adaptive air suspension sport (electronically controlled sport air suspension with continuously adaptive damping system at all four wheels and a more dynamic basic setting; vehicle level lowered by up to 15 mm compared to adaptive air suspension, depending on the mode; automatically adjusts vehicle level and damping depending on the load. Various modes can be set via Audi drive select. Ride heights when stationary: +60 mm in "raise" (or "lift"), +25 mm in "allroad"/"offroad", -15 mm in "auto"/"comfort", -30 mm in "dynamic")
- Electrically adjustable, heated, and folding exterior mirrors, automatically dimming on both sides with memory function (with integrated LED turn signals and curb view function for the passenger-side exterior mirror; aspherical mirror glass, including heated windshield washer nozzles. The passenger-side exterior mirror tilts downwards when reverse gear is engaged, providing the driver with a better view of the curb).
- Glazing: Climate comfort/acoustic windshield, wireless, heated (heated windshield in climate comfort/acoustic glass, facilitates rapid defrosting and ensures fog-free operation through surface heating of the windshield without vision-impairing heating wires; heating controlled via the automatic climate control; additionally, the reflective coating of the windshield reduces heating of the interior at high outside temperatures, without a viewing window for telepass devices)
- Radio accessories: Bang & Olufsen Premium Sound System with 3D sound (sound reproduction through 19 speakers including 3D sound speakers, center speaker and subwoofer, 16-channel amplifier with a total output of 730 watts; spatial sound reproduction through the new 3D sound feature for the front seats. This is created by additional speakers in the A-pillar, the midrange speakers and the Fraunhofer Symphoria technology. The 3D sound can be generated with all sources.)
- S line Sport package (sports seats in front - seat upholstery in Alcantara frequency/leather combination - 3-spoke leather steering wheel with multifunction plus including steering wheel grips in perforated leather and S line emblem - gear selector lever in perforated black leather - decorative inlays in brushed matt aluminum - illuminated door sill trims with aluminum inlays front and rear, with S lettering at the front - black fabric headliner - stainless steel loading sill protector - front and rear floor mats with contrasting stitching)
- Ambient Lighting Package (in addition to the standard interior lighting in white LED light: - Ambient lighting front/rear door mirrors - Approach lighting from the outer door handles front/rear - Ambient lighting of the instrument panel - Ambient lighting of the center console front)
- Black fabric headliner
- Bumpers: Bumpers in full paint finish (front and rear bumpers, door trim strips and wheel arch trims in body color - inserts in the door trim strips with quattro embossing and front and rear underride protection in matt selenite silver)
- Comfort center armrest in front (comfortable and relaxed seating position - separately adjustable longitudinally for driver and front passenger - with fold-out storage compartment, additional storage option in the integrated storage compartment - adjustable in tilt or foldable completely backwards)
- Deletion of model designation and performance/technology lettering
- Electric cargo cover (electrically opening and closing cargo cover; for convenient loading of the luggage compartment)
- Exterior mirror housings in black
- Glazing: Privacy glazing (tinted windows) (rear window, rear door and side windows tinted)
- Headrests: variable headrests for front seats (with manual adjustment of headrest height and distance)
- High beam assist (within the system's limits, it automatically detects oncoming headlights, taillights of other road users, and built-up areas. Depending on the traffic situation, the high beam is automatically switched on or off.)
- Manual sunshade (for rear window and rear door windows)
- Package: Assistance Package Plus (Parking Assistance Package including Parking Assistant Plus - City Assistance Package - Tour Assistance Package)
- Paint finish: Metallic
- Radio accessories: Audi music interface in the rear (2 additional USB-C interfaces with charging and data function in the rear in addition to 2 interfaces in the front for playing music from a portable storage medium)
- Radio accessories: DVD drive
- Rear airbag (side airbags) (as a supplement to front side airbags and head airbag system)
- Seat covers in Alcantara Frequency/leather combination (for sport seats: - Center section of the front seats, the rear seats in the 2nd row and the two seats of the 3rd row (if ordered) in Alcantara Frequency - Side bolsters and front of the headrests of the front seats and the rear seats in the 2nd row in leather - Side bolsters and front of the headrests of the two seats in the 3rd row (if ordered) in synthetic leather - S embossing in the backrests of the front seats)



- Seats: Electrically adjustable front seats including memory function for the driver's seat (Two memory slots for the electrically adjustable front seats and the exterior mirrors, storable and recallable via the memory buttons in the door panel. In addition, the last seat position is automatically saved in the personal profile.)
- Seats: Rear bench seat plus (The seats in the second row can be individually adjusted manually in a 35:30:35 ratio for length and backrest angle. The 3 seats of the rear bench seat can be folded down in a 35:30:35 ratio (flat load floor). Rear center armrest including 2 cup holders. The two outer seats additionally include a folding mechanism. ISOFIX and Top Tether child seat anchors are included for all 3 seats.)
- Steering wheel: Leather steering wheel in 3-spoke design with multifunction plus, heated (with shift paddles)
- Telephone: Audi Phone Box (features include Bluetooth interface; additional functions: optimizes in-vehicle phone calls by placing the mobile phone in the universal phone holder. In conjunction with a navigation system and Audi connect, the Audi phone box includes a car phone function via SIM card slot or rSAP profile. Includes coupling antenna for connecting the mobile phone to the external antenna with LTE support. Charging option via USB-A port or wireless charging (Qi standard)).
- Wheel: Winter wheels, 4 cast aluminum wheels in 5-spoke star design (8 J x 19 with tires 255/55 R 19 - suitable for snow chains - maximum permissible speed 210 km/h)
- Seats: Front sports seats (with electric adjustment of seat height, seat fore/aft position, seat and backrest tilt and seat depth adjustment - manual adjustment of headrest and belt height, with pronounced side bolsters for better lateral support in curves - electric 4-way lumbar support)
- Telephone: Audi smartphone interface (The Audi smartphone interface (Android Auto and Apple CarPlay) connects your smartphone to your Audi and seamlessly displays your smartphone content directly on the MMI display via USB. Navigation, telephony, music and selected third-party apps can be conveniently controlled via the MMI touchscreen as well as via voice control on your smartphone.)
- Towbar (The electrically swiveling towbar can be conveniently locked and unlocked via a release mechanism. Electrically swiveling ball head with electric release. Ball rod and head made of forged steel. Operation via a button in the luggage compartment. Trailer stabilization via the Electronic Stability Control (ESC). The integrated swiveling system socket allows continuous operation of electrical devices in the trailer or caravan while driving...)
- Wheel: Aluminum cast wheels (4 pieces) in 10-spoke star design, graphite grey, polished (9 J x 20 with tires 285/45 R 20)
- Wheel: Tire pressure monitoring system (Sensors monitor the set tire pressure during driving, even with factory-fitted winter tires. Visual and audible warnings are issued in case of pressure loss in one or more tires; the display appears in the driver information system and MMI. The status of the tire pressures and temperatures of individual tires is displayed in the MMI system while driving.)

Brief expert findings

Documents submitted	At the time of the inspection, the vehicle registration certificate Part 2 (title) was available, but the vehicle registration certificate Part 1 (document) was not. (Copy)
VIN comparison	The vehicle identification number (VIN) was read from the vehicle and its conformity with the submitted documents was confirmed by the undersigned during the inspection.
Inspection	The inspection conditions were sufficient for the assessment of the vehicle. No lifting equipment or pit was available for inspecting the vehicle. Therefore, inspection of the vehicle's underside was only possible to a limited extent.
Test drive	No test drive/shunting maneuver was carried out during the inspection of the vehicle.
Engine function test	An engine test run was performed.



Value reducing factors

No.	Component group	Description
1	Door - rear right side	Door - Scratch(es) - Cover / polish
2	Front bumper	Front bumper - Scratched - Smart repair
3	Trim / covers	Brightware / decorative strip (Tür HR zum Radlauf) - Scratched - Replace
4	2nd wheel set	1 tyre (HR) - Damaged - Replace
5	Side panel - rear right side	Wheel well extension - Scratched - Replace
6	Mudguard - right side	Wheel well extension - Scratched - Replace
7	Boot lid / rear door	Boot lid - Dent / paintcoat damage - Repair and paint
8	Front bumper	Air-inlet grille - Broken / torn - Replace
9	Wheel / tyres	Tyres - complete set (4x 3mm) - Does not meet the leasing specifications - Replace
10	Side panel - rear right side	Side panel - Scratched - Paint
11	Rear bumper	Rear bumper - Scratch(es) - Paint

Wear and tear

No.	Component group	Description
1	Vehicle glazing	Windscreen - Stone chips - No deduction

The vehicle shows signs of wear and tear commensurate with its age and use.

Missing parts

Description

Equipment - Tirefit complete (Inkl. Tasche)

Order/Scope of Order

An order was placed to prepare a sales report for the described vehicle. This report includes the following:

- Description of key vehicle information
- Documentation of equipment features
(*Delivery by third-party service providers*)
- Documentation of damage, defects, missing parts
- Documentation of prior damage, unrepaired prior damage, repainting
- A brief visual or functional inspection of the equipment details, if possible.
(*Functional testing of driver assistance systems is not included in the scope of services!*)
- a photographic documentation of the vehicle



Basis for the order

This product is based on the guidelines for vehicle returns and valuations published by Alphabet Fleet GmbH. The expert makes the specific findings in each individual case objectively, within the framework of the prescribed standards, based on their own expertise.

The vehicle inspection takes place in a fully assembled, unassembled state.

Damage or defects that can only be detected during disassembly/diagnostic work or through further investigation remain within the realm of prognostic risk. An increased risk exists due to concealed defects caused by fraudulent misrepresentation and which were not identifiable by the expert.

Damage or defects resulting from normal use or wear and tear of the vehicle will be accepted in accordance with the applicable standard.

There was no explicit identification or monetary consideration of the expected features within the product.

Features which, in their nature and extent, slightly exceed normal use but do not constitute unacceptable damage, will be documented and indicated as signs of wear, if applicable.

Damage or defects that, according to the applicable standard, can no longer be attributed to normal use or wear and tear are listed under "Value Reducing Factors" in the product description.

Depending on the product specification, a monetary ID can be provided. If this takes place, the costs can be 100% d or pro rata depending on the vehicle's age and mileage.

Previous damages

No apparent prior damage that had been repaired could be found on the vehicle.

Comments

- Die Unterbodenbesichtigung war nur ebenerdig & eingeschränkt möglich. Mehrkosten möglich.
- Das Fahrzeug weist im ganzen erhöhte Lackschichtendicke Werte auf.



Figure 1: Diagonal front (left)



Figure 2: Diagonal front (right)



Figure 3: Diagonal rear (left)



Figure 4: Diagonal rear (right)



Figure 5: Interior - front

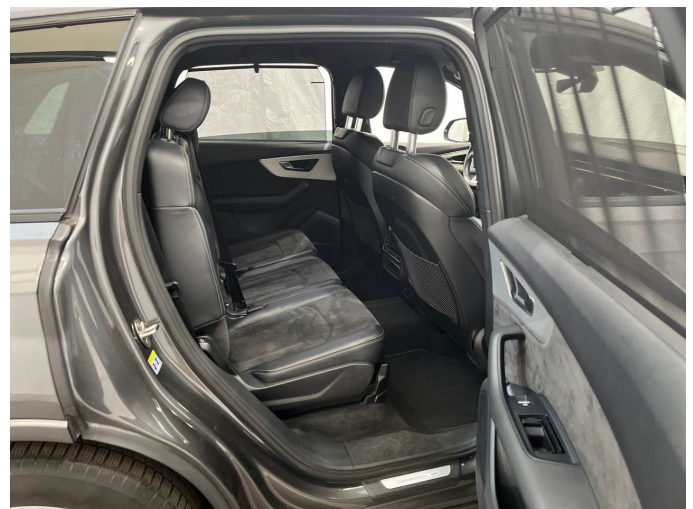


Figure 6: Interior - rear



Figure 7: Instrument cluster



Figure 8: Instrument panel



Figure 9: Interior 360° view



Figure 10: Cargo area



Figure 11: VIN



Figure 12: Mounted tyres



Figure 13: Documents

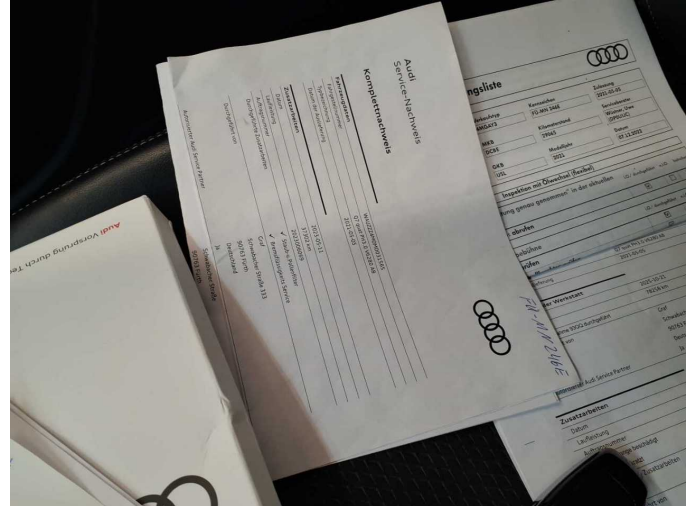


Figure 14: Documents



Figure 15: Documents



Figure 16: Documents

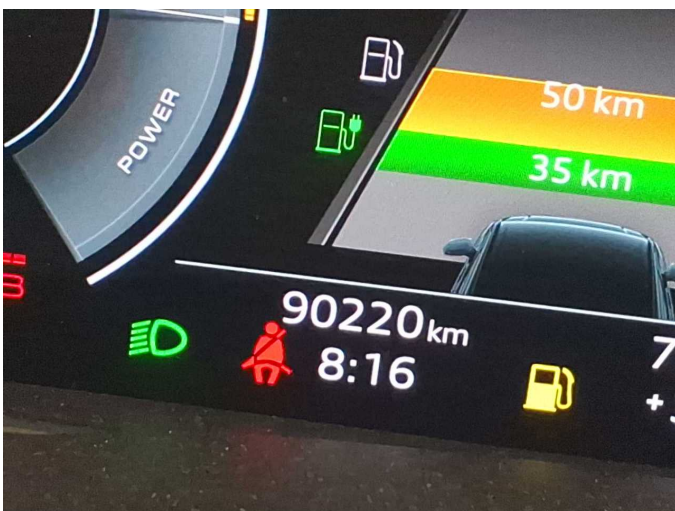


Figure 17: Documents



Figure 18: Additional tyres



Figure 19: Navigation



Figure 20: Misc.



Figure 21: Misc.



Figure 22: Misc.

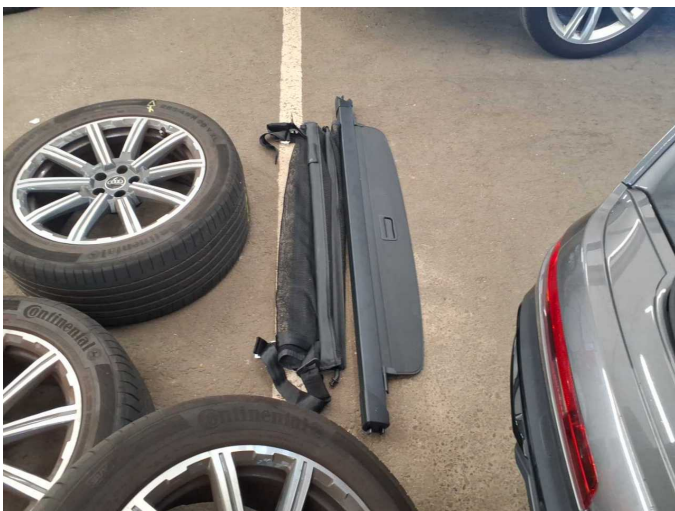


Figure 23: Misc.



Figure 24: Misc.



Figure 25: Misc.



Figure 26: Misc.

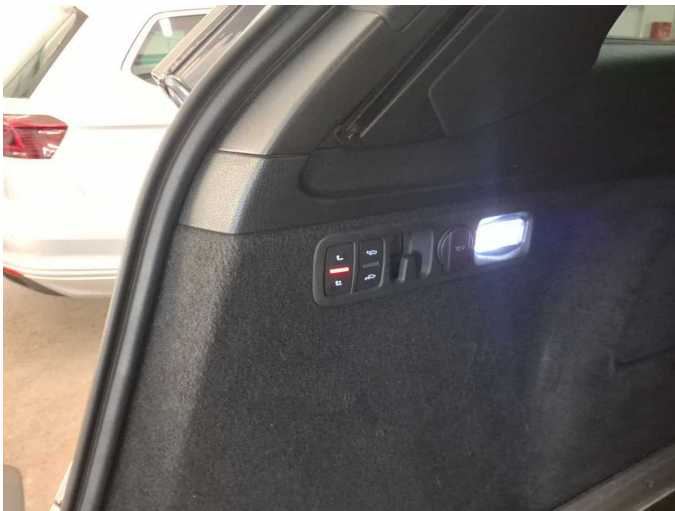


Figure 27: Misc.



Figure 28: Misc.

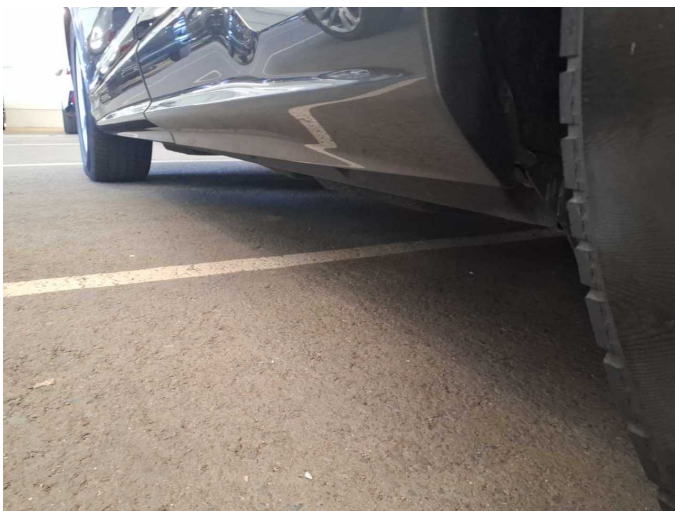


Figure 29: Misc.



Figure 30: Misc.



Figure 31: Misc.



Figure 32: Misc.

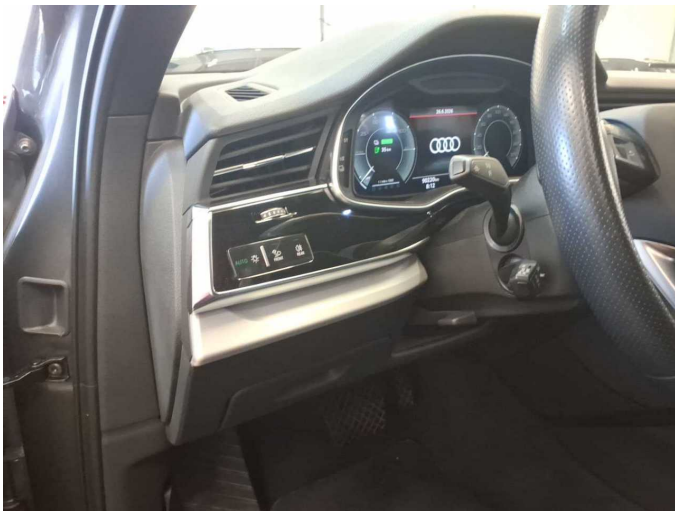


Figure 33: Misc.



Figure 34: Misc.

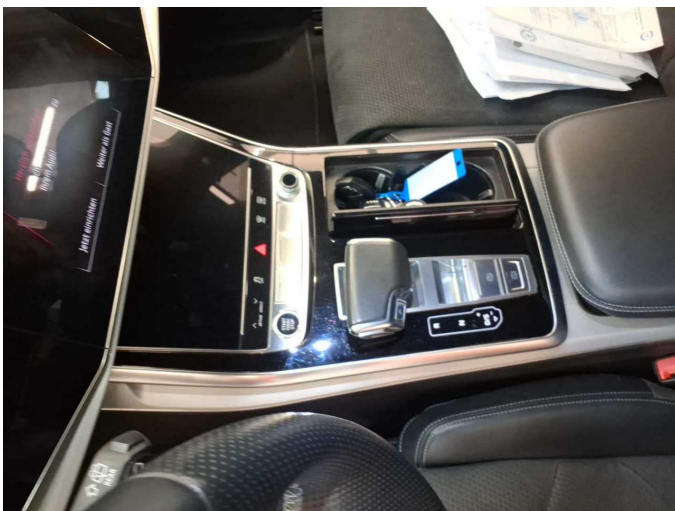


Figure 35: Misc.

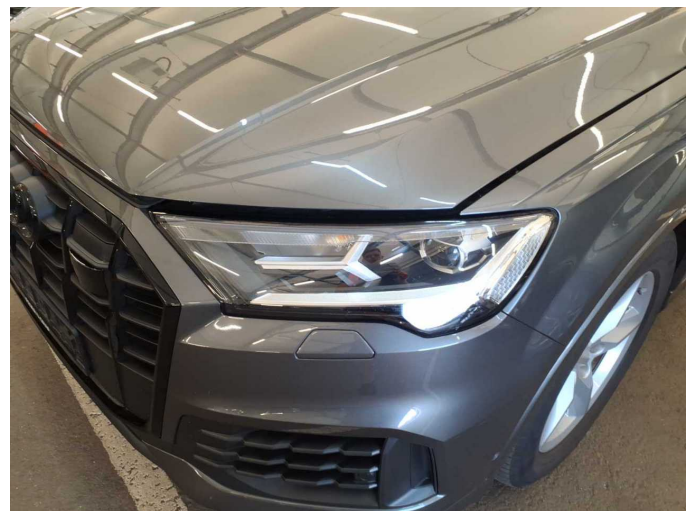


Figure 36: Misc.



Figure 37: Misc.



Figure 38: Misc.



Figure 39: Misc.



Figure 40: Misc.



Figure 41: Misc.



Figure 42: Misc.



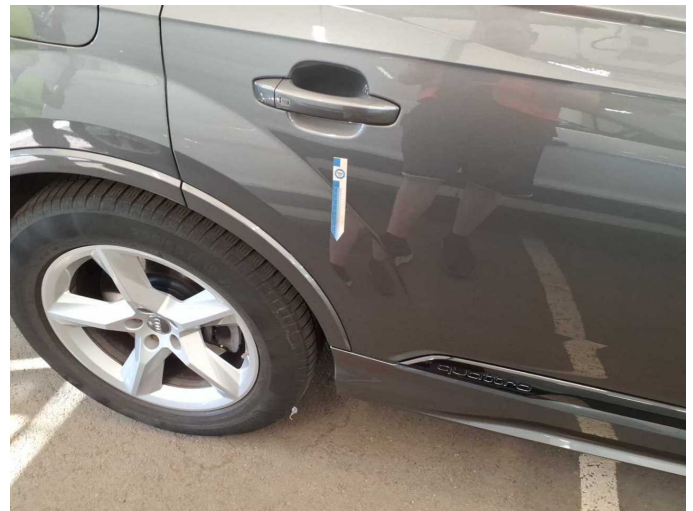
Figure 43: Misc.



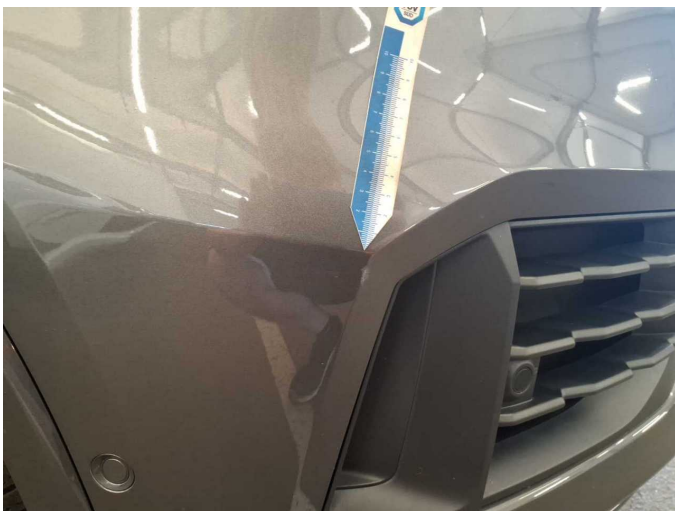
Damage 1: Door - rear right side: Door - Scratch(es) - Cover / polish



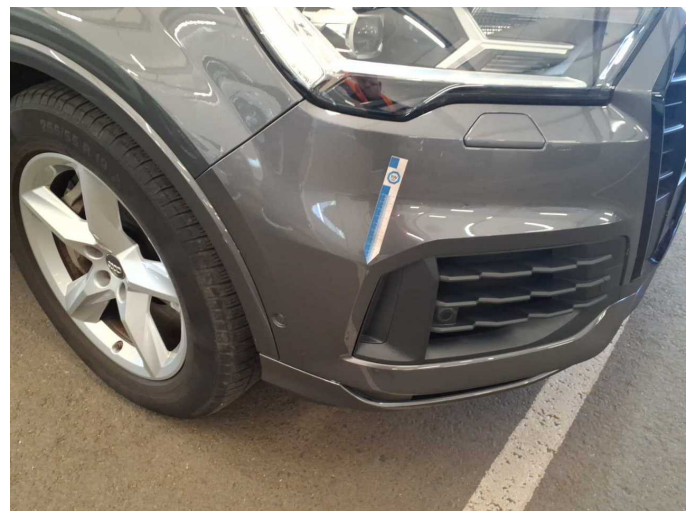
Damage 1: Door - rear right side: Door - Scratch(es) - Cover / polish



Damage 1: Door - rear right side: Door - Scratch(es) - Cover / polish



Damage 2: Front bumper: Front bumper - Scratched - Smart repair



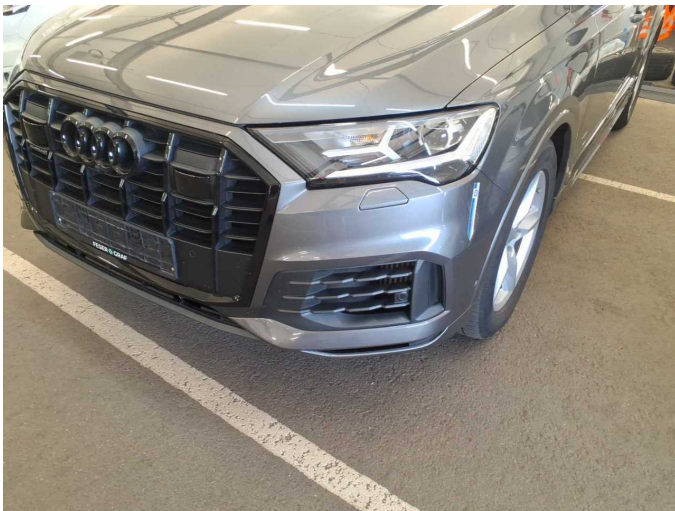
Damage 2: Front bumper: Front bumper - Scratched - Smart repair



Damage 2: Front bumper: Front bumper - Scratched - Smart repair



Damage 2: Front bumper: Front bumper - Scratched - Smart repair



Damage 2: Front bumper: Front bumper - Scratched - Smart repair



Damage 3: Trim / covers: Brightware / decorative strip (Tür HR zum Radlauf) - Scratched - Replace



Damage 3: Trim / covers: Brightware / decorative strip (Tür HR zum Radlauf) - Scratched - Replace



Damage 4: 2nd wheel set: 1 tyre (HR) - Damaged - Replace



Damage 4: 2nd wheel set: 1 tyre (HR) - Damaged - Replace



Damage 5: Side panel - rear right side: Wheel well extension - Scratched - Replace



Damage 5: Side panel - rear right side: Wheel well extension - Scratched - Replace



Damage 6: Mudguard - right side: Wheel well extension - Scratched - Replace



Damage 6: Mudguard - right side: Wheel well extension - Scratched - Replace



Damage 7: Boot lid / rear door: Boot lid - Dent / paintcoat damage - Repair and paint



Damage 7: Boot lid / rear door: Boot lid - Dent / paintcoat damage - Repair and paint



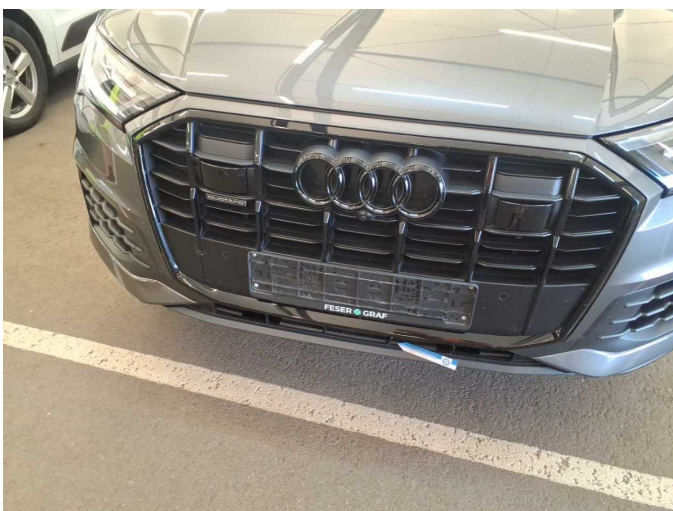
Damage 7: Boot lid / rear door: Boot lid - Dent / paintcoat damage - Repair and paint



Damage 8: Front bumper: Air-inlet grille - Broken / torn - Replace



Damage 8: Front bumper: Air-inlet grille - Broken / torn - Replace



Damage 8: Front bumper: Air-inlet grille - Broken / torn - Replace



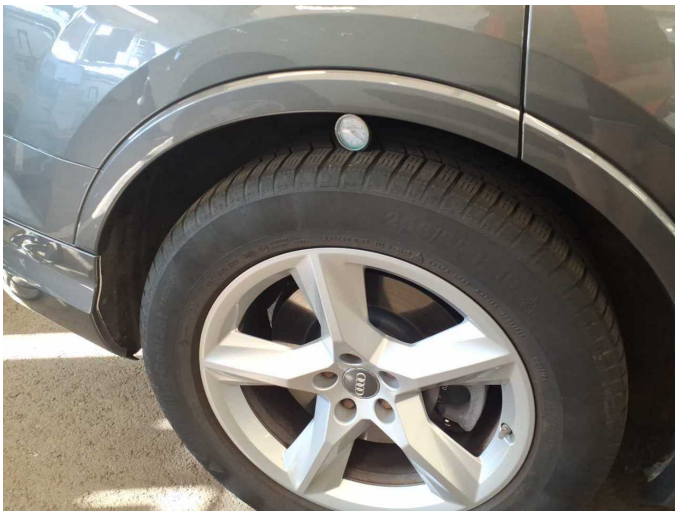
Damage 9: Wheel / tyres: Tyres - complete set (4x 3mm) - Does not meet the leasing specifications - Replace



Damage 9: Wheel / tyres: Tyres - complete set (4x 3mm) - Does not meet the leasing specifications - Replace



Damage 9: Wheel / tyres: Tyres - complete set (4x 3mm) - Does not meet the leasing specifications - Replace



Damage 9: Wheel / tyres: Tyres - complete set (4x 3mm) - Does not meet the leasing specifications - Replace



Damage 9: Wheel / tyres: Tyres - complete set (4x 3mm) - Does not meet the leasing specifications - Replace



Damage 9: Wheel / tyres: Tyres - complete set (4x 3mm) - Does not meet the leasing specifications - Replace



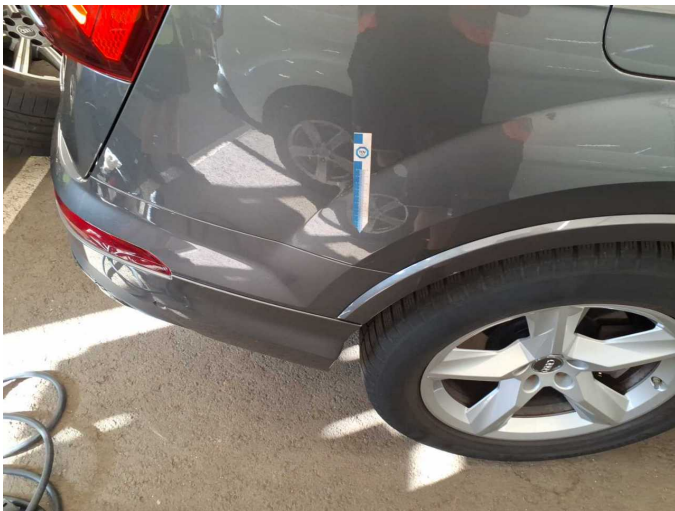
Damage 9: Wheel / tyres: Tyres - complete set (4x 3mm) - Does not meet the leasing specifications - Replace



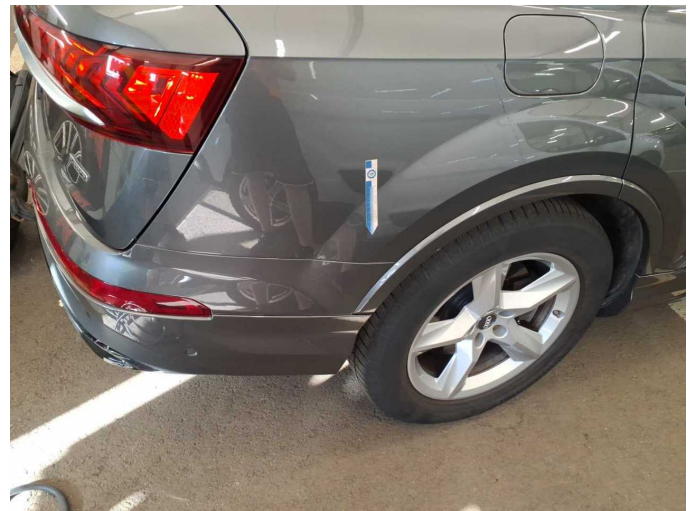
Damage 9: Wheel / tyres: Tyres - complete set (4x 3mm) - Does not meet the leasing specifications - Replace



Damage 10: Side panel - rear right side: Side panel - Scratched - Paint



Damage 10: Side panel - rear right side: Side panel - Scratched - Paint



Damage 10: Side panel - rear right side: Side panel - Scratched - Paint



Wear and tear 1: Vehicle glazing: Windscreen - Stone chips - No deduction



Wartungshistorie

(gemäß Auftraggeber Informationen)

Fahrgestellnummer: WAUZZZ4M0MD031565
Hersteller / Modell: AUDI AUDI Q7 55 TFSI e quattro tiptronic

Datum	KM-Stand	Beschreibung
30.04.2026	89.909	AU; Bremsbelagfühler ern; Bremse Sonstiges; Bremsklötze hinten; Bremsklötze vorne; Bremsscheiben + Klötze h; Bremsscheiben + Klötze v; Bremsscheiben hinten; Bremsscheiben vorne; Luftfiltereinsatz ern; Motoröl b. Wartung; Ölfilter ern; Regelwartungsdienst; Systemtest/Eigendiagnose; Wartung Sonstiges
08.05.2025	71.452	Bremsflüssigkeit; Bremsflüssigkeit ern
09.07.2024	58.078	Motoröl b. Wartung; Ölfilter ern; Regelwartungsdienst; Wartung Sonstiges; Zündkerzen ern
14.05.2024	0	AU
11.05.2023	37.302	Bremsflüssigkeit; Bremsflüssigkeit ern
07.12.2022	29.065	Motoröl b. Wartung; Ölfilter ern; Regelwartungsdienst; Wartung Sonstiges