

» Overview

Order number: 1002415800
Order completed: 23.04.2026 11:55
Report number: 10484151
VIN: WVGZZZ5NXRM234993



Front Left 3/4



Rear Right 3/4



Mileage

» Vehicle Data

Vehicle category:	Passenger Car
Vehicle type:	SUV
Make:	Volkswagen
Model:	Tiguan
Manufacturers and type code:	0603 / CIR
Date of first registration:	07.04.2025
Mileage:	36,363 km
Proof of mileage:	ReadOff
Exterior colour:	Platinum Grey Metallic
Roof colour:	Platinum Grey Metallic
Propulsion:	Front
Fuel:	Petrol
Engine size (cc):	1,500 ccm
Performance:	110 kW (150 PS)
Length:	
Height:	
Width:	
Permitted total weight:	
Wheelbase:	
Number of powered axles:	2
Cylinders:	4
Euronorm:	Euro 6
Number of doors:	4
Number of seats:	7
Gearbox:	Automatic 7-speed
Upholstery type:	Lining fabrics
Interior colour:	Titanschwarz/Titanschwarz/Schwarz/ Stormgrey
Number of keys:	1

» Documents & Maintenance

Statutory inspection date:	
Registration certificate available:	No
Registration certificate received:	No
License plate:	None
Maintenance book:	Digital
Maintenance:	Not testable
Maintenance last date:	
Maintenance last mileage:	

12 V outlet in center console in rear and in luggage compartment	Completely folding front passenger seat backrest
2 LED reading lights in front and 2 in rear	Control code for police/public authorities
2 seats in 3rd row of seats, incl. asymmetric split folding rear bench seat and backrest, incl. center armrest	Curtain airbag system for front and rear passengers incl. side airbags in front
2 single seats in 3rd row of seats	Decorative inserts "Horizon Black" for dashboard and front door trim panels
2 USB-C ports in the front, charging capacity up to 45 W	Delivery inspection
3 head restraints in rear	Digital radio reception DAB+
3-point seat belt for center rear seat	Disc brakes in front
3-point seat belts in front with height adjustment and seat belt pretensioners	Disc brakes in rear
3-point seat belts with seat belt pretensioners for the outer rear seats	Diversity antenna for FM reception
4 AirStop® all-season tires 235/55 R18	Door and side trim panel in foam film and woven fabric
4 alloy wheels "Frankfurt" 7J x 18	Drawers under front seats
4-cylinder SI engine 1.5 l TSI, 110 kW	Driver and front passenger airbag with front passenger airbag deactivation, including knee airbag on driver side
4-cylinder SI engine 1.5 l unit 05E.D	Driving on the right
7-speed automatic transmission or dual-clutch transmission DSG, note: PR family EDF	Dual-clutch transmission DSG DQ381
8 speakers	Dynamic Road Sign Display
Activated carbon canister (Evaporative Emission Control System (EVAP))	Electric luggage compartment opening and closing, adjustable opening angle
ADAC Clubmobil	Electromechanical parking brake with Auto Hold function
Adaptive Cruise Control ACC stop & go incl. speed limiter	Electromechanical speed-sensitive power steering
Additional luggage compartment light, removable and usable as a flashlight	Electronic immobilizer
Advanced driver attention & drowsiness monitor	Electronic Stability Control w/ driver steering recommendation, ABS, ASR, EDL, EDTC and trailer stabilization
Air Care Climatronic 3 zone automatic climate control w/ allergen filter, enhanced air filter a. controls in rear	Elimination of nameplate for engine designation on luggage compartment lid
Alternator 140 A	Elimination of Tire Mobility Set
Aspherical exterior mirror on driver side	Emergency call service, 10-year contract duration as of initial delivery, condition: mob. phone network available
Auto-dimming interior rearview mirror	Emission standard, WLTP3 M1, N1-I/EU6EA
Automatic headlight control with LED separate daytime running light and exit and entry lighting	Equipment options subset for Germany
Automatically-heated washer nozzles in front	Exterior mirror housings painted in Silver
Autonomous Emergency Braking Front Assist (for Adaptive Cruise Control ACC up to 210 km/h)	Exterior mirrors power-adjustable and heated
Battery 420 A (70 Ah)	First aid kit, warning triangle and safety vest
Body-colored bumpers, black lower parts	Folding trailer hitch, with electric release
Bracket for first aid kit and warning triangle	Front seats with height adjustment
Carpet mats in front and rear	Front stabilizer bar
Carrier frequency 433.92 MHz-434.42 Mhz	Front-wheel drive
Center armrest in front	Fuel system for fuel-injected SI engine
Central locking system without SAFELOCK, with radio remote control and 2 remote control folding keys	Gearshift knob in leather
Chrome moldings on the side windows	Glove compartment with cooling system
CO2 variant	Green heat-insulating glass windows on sides and in rear
Comfort equipment	Hatchback
Comfort seats in front	Headlight range control
	Headliner

Heated front seats	Rain sensor
High-beam control Light Assist	Rear combination lamps
Illuminated vanity mirrors in sun visors	Rear fog lamp
Initial standard fuel filling	Rear shock absorption, basic version 1
Inserts of front seats and outer rear seats in fabric "Life"	Rear stabilizer bar
Instrument cluster with electronic speedometer, odometer and trip odometer, tachometer	Refrigerant R1234yf
ISOFIX anchorage points for mounting of 2 child seats on rear bench seat, also for i-Size child seats	Regional code " ECE " for radio
Laminated safety glass windshield, heat- and sound-insulating	Remote unlocking for rear seat backrest
Lane keeping system Lane Assist	Right exterior mirror, convex
Leather multi-function steering wheel, heated, with shift paddles	Safety-optimized front head restraints, longitudinally and height adjustable
LED headlamps	Service indicator 30 000 km or 2 years (variable)
LED license plate lighting	Shock absorption in front
Left-hand drive	Silver-anodized roof rails
Light unit in front footwell	Small navigation system M&I (Media & Internet package)
LongLife Service Regime	Special built-in parts, after-sales service workshop
Luggage compartment cover	Special identification label for EC for M1 passenger vehicles
Luggage compartment floor with storage compartment	Standard battery/alternator capacity
Lumbar supports in front	Standard climatic zones
Manual in German (Germany)	Standard curb weight range
Mexico manufacturing sequence	Standard engine starter
Mobile phone interface	Standard paint coating
Multi-color Digital Cockpit Pro, selection of different info profiles possible	Standard pedal cluster
Multifunction camera	Standard roof
Navigation system "Discover Media" incl. Streaming & Internet	Standard wheel bolts
No special edition	Start-stop system with regenerative braking
No special purpose vehicle, standard equipment	Storage compartment with cover on dashboard
Non-smoker's package: Storage compartment and 12 V outlet in front	Styling elements on the power mirror switch, window regulator switches and door pulls
Not hot country	Suspension range 03 installation control only, no requirement forecast
Online service, with OCU, with head unit coding, without engine immobilizer interconnection	Textile luggage compartment trim
Operating permit, alteration	Tire Pressure Monitoring System
Operating voltage 12 V	Tires without specification of tire brand
Overhead storage compartments	Tool kit
Park Distance Control - warning signals for obstacles in the front and rear	Trims for alloy wheels
Part set without country-specific prescriptive standard	Two-tone horn
Pedestrian Monitoring	Type approval country Germany
Preparation for We Connect and We Connect Plus or VW Connect and VW Connect Plus	Vehicle class differentiation -55N-
Proactive passenger protection system in combination with Front Assist	Vehicles with special upgrade measures
Protective side molding	Warning lamp for washer fluid level
Radiator grille	Warning signal and warning lamp for front and rear seat belts not fastened
Radio	Weight range 16 installation control only, no requirement forecast
	Wheelbase

Winter package
With additional transport protection measures
With UNECE CS (R155) without SU (R156)
Without "Multimedia" in vehicle
Without Adaptive Chassis Control
Without add. lights (interior lighting)
Without additional front underbody guard
Without additional tires
Without alternative drive system
Without auxiliary heater/parking heater
Without camera systems/accident sensors
Without country code (no DVD player in the vehicle)
Without decals and emblems
Without delivery equipment
Without ECO function
Without electronic steering column lock
Without exterior ambient lighting
Without fire extinguisher
Without folding table on front seat backrest
Without front fog lamps
Without garage door opener
Without headlamp washer system
Without head-up display
Without heat accumulator/auxiliary heater
Without hill start assist/hill descent control/comfort driving assist
Without lane change assist
Without partition
Without protective film for scuff plate
Without rear spoiler
Without seat ventilation/massage seat
Without second battery
Without special body measures
Without storage compartment package/box
Without tie down straps/net/pocket
Without vehicle inlet
Without voice control

» Tyres

MOUNTED TYRES

Make	Location	Position	Type	Rim	Dimensions	Profile depth
Continental	Front	Left	All season	Aluminium	235/55 R 18 100 V	5.0 mm
Continental	Front	Right	All season	Aluminium	235/55 R 18 100 V	5.0 mm
Continental	Rear	Left	All season	Aluminium	235/55 R 18 100 V	8.0 mm
Continental	Rear	Right	All season	Aluminium	235/55 R 18 100 V	8.0 mm

Permitted: Yes**Roadworthy:** Yes**SPARE/EMERGENCY TYRE & ACCESSORIES****Toolkit present:** Yes

» Devaluation Factors

Nr	Location	Damage type	Repair type
1	Preparationtime bodywork	Paint preparation	Execute
2	Wing FL	Dent(s) and scratch(es)	Repair and paint (complete)
3	Bumper FL	Scratch(es)	Paint
4	Bumper loading edge trim	Scratch(es)	Smart repair
5	Wheel arch cover FL	Scratch(es)	Smart repair
6	Bodywork	Lettering	Remove lettering
7	Inner door sill RR covering	Scratch(es)	Smart repair
8	Bonnet	Stone chip(s)	Touch up
9	Door FL	Scratch(es)	Touch up
10	Engine insulation	Damaged	Replace
11	Door RL	Scratch(es)	Touch up

» Usage Damages

Nr	Location	Damage type	Repair type
1	Windscreen	Stone chip(s)	Acceptable
2	Internal boot lining L	Scratch(es)	Acceptable

» Missing Parts

Nr	Location	Damage type	Repair type
1	Ignition key	Missing	Replace

» Commercial devaluation

Accidental vehicle:	Yes
Known previous damages:	No
Previous damages detectable:	No
Repainting present:	No
Paint thickness measurement performed:	Yes - no abnormalities/deviations

PAINTTHICKNESS MEASUREMENT RESULTS

The measured values were in the usual range.

At least 3 measurements were carried out per component.

» Notes On The Assessment**Details of the assignment and the scope of the assessment:**

The order was placed to prepare a condition report on the described vehicle.

The vehicle condition assessment was carried out in accordance with the order on the basis of the standards for vehicle assessments specified by the client. The expert makes the findings in the individual case on the basis of his own expertise and at his own expert discretion.

Vehicle identification:

WVGZZZ5NXRM234993

VIN check, no comparison with documents possible

Vehicle condition:

Cleaned

Inspection condition:

Sufficient

Lifting platform/lifting equipment used:

No

Testdrive carried out:

No

Engine test carried out:

Yes

» **Remarks**

This copy was generated electronically. It is valid without an original signature.

» Commercial Pictures



Front Left 3/4



Front Right 3/4



Rear Left 3/4



Rear Right 3/4



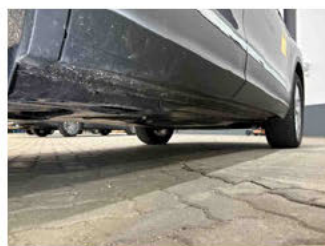
Mileage



Tools



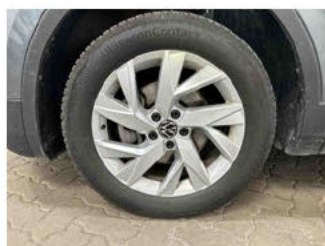
Sill outer L



Sill outer R



Chassis nr



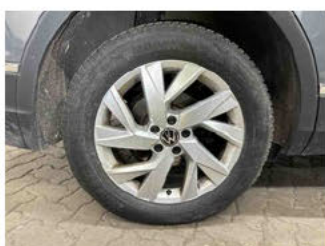
Wheel FL



Wheel FR



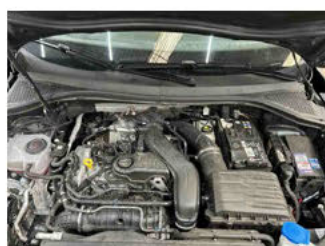
Wheel RL



Wheel RR



Central console



Engine compartment



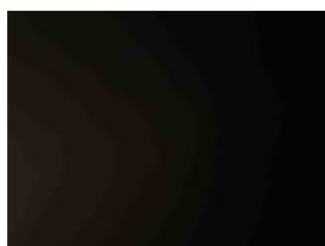
Documents



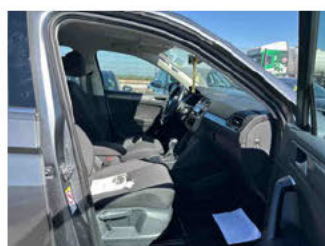
Interior arrangement



Towbar



History Maintenance



Interior - front



Interior - rear

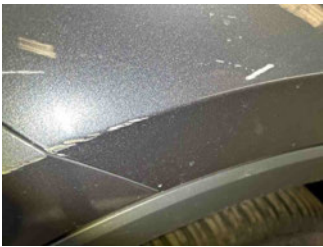


GPS/Radio

» Devaluation Damages**DEVALUATION FACTORS**

1 - Preparationtime bodywork - Paint preparation - Execute

2 - Wing FL - Dent(s) and scratch(es) - Repair and paint (complete)



3 - Bumper FL - Scratch(es) - Paint



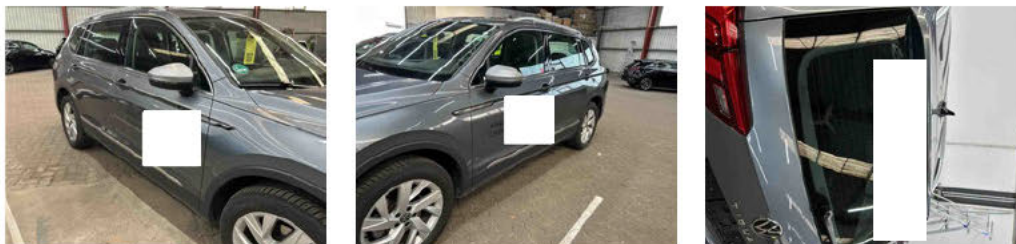
4 - Bumper loading edge trim - Scratch(es) - Smart repair



5 - Wheel arch cover FL - Scratch(es) - Smart repair



6 - Bodywork - Lettering - Remove lettering



7 - Inner door sill RR covering - Scratch(es) - Smart repair



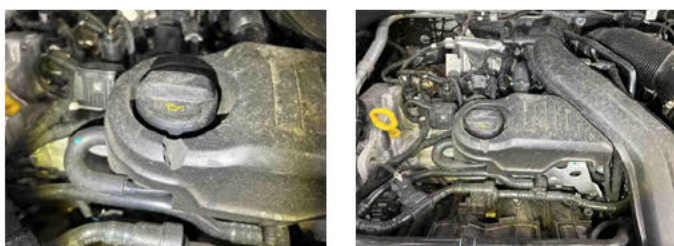
8 - Bonnet - Stone chip(s) - Touch up



9 - Door FL - Scratch(es) - Touch up



10 - Engine insulation - Damaged - Replace

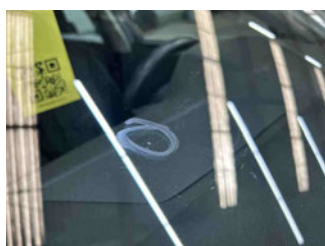


11 - Door RL - Scratch(es) - Touch up

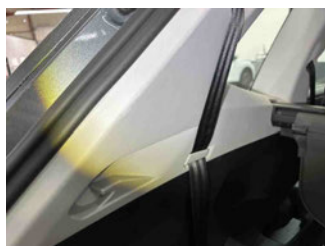


USAGE DAMAGES

1 - Windscreen - Stone chip(s) - Acceptable



2 - Internal boot lining L - Scratch(es) - Acceptable



MISSING PARTS

1 - Ignition key - Missing - Replace

