

## Expertise

Protocol number: 46079661  
Order No. / Reference: 26500479  
Inspection date: 22 Jun 2026

Manufacturer: Opel

Model: Astra 1.5 D Start/Stop Sports Tourer Automatik Ultimate

VIN: W0VBE8EV7N8040393



### Vehicle details

#### Manufacturer / Type / Model / Equipment

Opel Astra 1.5 D Start/Stop Sports Tourer Automatik Ultimate

<b>Vehicle Identification number</b>	W0VBE8EV7N8040393
<b>Mileage (Read)</b>	62,732 km
<b>First registration</b>	17 Mar 2022
<b>Number of holders</b>	1
<b>Next periodical technical inspection</b>	04/2027
(Report on hand)	

<b>Power / Engine displacement</b>	90 kw / 1,496 ccm
------------------------------------	-------------------

<b>Fuel type / Cylinder</b>	Diesel / 3
-----------------------------	------------

<b>Gearbox / Number of gears</b>	Automatic / 9
----------------------------------	---------------

<b>Type of drive</b>	Front drive
----------------------	-------------

<b>Type of vehicle</b>	Station wagon
------------------------	---------------

<b>Colour / colour code</b>	Argonsilber Metallic
-----------------------------	----------------------

<b>Doors / Seats</b>	5 / 5
----------------------	-------

<b>Upholstery type</b>	Leather
------------------------	---------

<b>Colour of upholstery</b>	Black-Anthracite
-----------------------------	------------------



## Vehicle details

<b>Maintenance booklet / proof</b>	digital proof / complete	<b>Next maintenance in</b>	54 %
<b>Last service on / at</b>	01/2026 at 59,565 km		
<b>Key is / should be</b>	2 / 2	<b>FZG documents</b>	ZB#2 (B) was available (copy), ZB#1 (S) was not available.
		<b>Letter No.</b>	GJ649404
<b>Previous damage / Accident</b>	None detectable	<b>Repainting</b>	None detectable
<b>Inspection conditions</b>	sufficient	<b>Lifting equipment / pit</b>	yes
<b>Test drive</b>	Not performed	<b>Engine function test</b>	Performed
<b>Manufacturer key number/ type code number</b>	1844 / ALM 00231		
<b>Emission standard</b>	EURO6;WLTP;AP;PI/CI; M, N1 I	<b>fine dust sticker</b>	
<b>Permitted total weight</b>	1,980 kg	<b>Empty weight</b>	

## Tyres

### Mounted tyres

#	Tyre size	Type of tyre	Manufacturer	Tread depth
1)	225/45 R17 91V	Summer tyres on Light alloy	Continental	3mm / 3mm
2)	225/45 R17 91V	Summer tyres on Light alloy	Continental	4mm / 4mm

### Additional tyres

#	Tyre size	Type of tyre	Manufacturer	Tread depth
1)	205/55 R16 91H	Winter tyres on Steel	Pirelli	5mm / 5mm
2)	205/55 R16 91H	Winter tyres on Steel	Pirelli	4mm / 4mm

### Replacement

Typ	Tyre size	Type of tyre	Manufacturer	Tread depth
N	115/70 R16 92M	Summer tyres on Steel	Sonstige	2 mm

**Legend: Tread depth information for the left tire is listed first, for the right tire it is listed second on the axle in the direction of travel.**

TÜV SÜD Auto Partner GmbH  
Wiesenring 2  
04159 Leipzig

Inspection location  
Hartmann Compound Professionals  
Arnoldschacht 9-11  
44894 Bochum



## Equipment



## Standard equipment

- Storage compartments - Storage compartment in the center console and instrument panel, driver's side - Storage compartment in the front doors, suitable for 1.5-liter beverage bottles - Storage compartment in the rear doors, suitable for 0.5-liter beverage bottles - 4 lashing eyes in the luggage compartment
- Anti-lock braking system (ABS) with cornering brake control (CBC) and brake assist
- Electrically adjustable and heated exterior mirrors for driver and passenger side - manually folding - exterior mirror housings in black
- third brake light
- Roof rails, high-gloss black
- Decorative trim strips in piano black
- Tachometer
- Electric windows front and rear - with one-touch function and anti-pinch protection
- Speed controller with limiter
- Transmission: 9-speed automatic transmission
- Back window, heater
- rear window wiper
- High Gloss Black Exterior Equipment (Sports Tourer) - Roof design line, upper section in high-gloss black - Radiator grille, frame in high-gloss black - Roof rails in high-gloss black
- Interior features of the Sports Tourer: - 40:20:40 split-folding rear seat backrest - Rear center armrest with pass-through from the luggage compartment - FlexFold rear seat backrest
- Automatic climate control with two zones and separate temperature control for driver and front passenger, including: - Manual recirculation mode - Particle/activated carbon filter - Automatic air distribution - Sun sensor - Humidity sensor
- trunk light
- Rear headrests (3) - height adjustable
- Cargo area cover
- Steering column, height and reach adjustable
- Lighting equipment - illuminated makeup mirrors in sun visors - rear reading lights - ambient lighting in the overhead console
- OPC Line Interior Equipment - 3-spoke flat-bottomed leather sports steering wheel - Aluminum sports pedals - Black headliner
- Parkpilot, front and rear parking aid with acoustic warning signal when parking forwards and backwards.
- Upholstery: Alcantara trim - Ergonomic active seat, certified by the German Campaign for Healthy Backs (AGR) - incl. seat contact surfaces partially in Alcantara (2nd row center, headrests, door panels, seat bolsters in leatherette) - Length, height and tilt adjustable - Electropneumatically adjustable lumbar support in height and length - Extendable thigh support - Interior features - Pocket on the front seat backs
- Tire repair kit including tire sealant and 12-volt compressor (without jack)
- Tire pressure monitoring system - tire pressure display for each wheel
- Airbag for driver and front passenger side - front passenger airbag can be deactivated
- Airbag: Chest-pelvis side airbag for driver and front passenger side
- Airbag: Head airbags, 1st and 2nd row (outer seats)
- Ambient lighting, front doors
- Automatic activation of the hazard warning lights and unlocking of the doors after deployment of the airbag or seatbelt tensioner.
- Hill Start Assist
- On-board computer with check control system
- Roof design line, top in high-gloss black, B-pillar in high-gloss black
- Diesel particulate filter (DPF) - maintenance-free
- Electronic Stability Program Plus (ESP Plus)
- Front camera - Forward collision warning with automatic emergency braking: active from 8 km/h, range 60 m. Monitors the distance to the vehicle ahead. - Lane departure warning and lane keeping assist: Warning if the vehicle unintentionally leaves its lane (between 60 km/h and 180 km/h) via a warning light in the driver information display. The lane keeping assist also alerts the driver by gently counter-steering, but does not continuously steer the vehicle. - Distance indicator: Displays the distance to the vehicle ahead.
- Interior lighting, front and rear
- Instruments, black, with high-gloss chrome rings, 3.5" driver information display
- IntelliLux LED Matrix Light: LED matrix headlights with individual light distribution and the following functions: - City light - Highway light - Country road light - Static cornering light - Turning light - Parking function light - High beam: traffic-dependent dimming taking into account preceding and oncoming traffic - Automatic headlights - Headlight range control - LED taillights
- Front headrests - height adjustable
- Light alloy wheels 7.5 J x 17 in "5-spoke" design in black with tires 225/45 R17
- Center armrest is adjustable, with storage compartments and cup holders at the front.
- Fog light
- Park & Go Digital - Automatic parking assistant including parking pilot, front and rear parking aid - Blind spot warning in both exterior mirrors - Electrically folding exterior mirrors - Digital reversing camera with steering guidelines
- Pedal system: Disengaging safety pedals - PRS (Pedal Release System)
- Quickheat rapid heating system electric auxiliary heater
- Radio: Digital radio reception DAB/DAB+/DMB-R Digital Audio Broadcasting



- Digital reversing camera with steering guidelines
- Power steering - speed-dependent
- Seat belts: Three-point seat belts in all seats - belt force limiters and belt tensioners in the front and on the outer rear seats - warning tone and light for unfastened seat belts in all seats
- Visibility features: Rain sensor, front; automatically dimming interior rearview mirror; automatic headlights with tunnel detection
- 12V power outlet in the center console
- Traction Control (TC) Plus - Traction control with engine and brake intervention
- Pre-installation for child seat restraint system "ISOFIX" including top tether attachment points, rear outer
- Central locking with remote control and interior switches; ignition key color-matched to exterior

- Radio: Multimedia Navi Pro with 8" color touchscreen display. Multimedia radio with voice control for audio, telephone, and navigation. Navigation system with SD card storage. Road map for over 30 European countries. Map display in 2D and 3D. Dynamic route guidance via map and/or arrow display and voice prompts. Dynamic destination guidance via extended TMCpro. Connected Nav - Service. Predictive navigation (recognition of preferred destinations). Online map updates. Real-time traffic information. Parking information. 8" digital driver information display, selectable Sport or Tour mode, and customizable theme selection.
- Safety net for luggage compartment including mounting hardware behind the 1st or 2nd row of seats
- Solar Protect heat-insulating glazing in the rear, heavily tinted.
- Start/Stop system - Driving assistant - Reinforced starter motor - High-performance battery - Eco switch to deactivate the start/stop function - Brake energy recuperation
- Door sill trims with OPEL lettering, front
- Immobiliser
- Heat-insulating glazing, green tinted, and windshield
- Ignition keys, two, both foldable

### Extra equipment

- Electric tailgate with foot sensor. Sensor-controlled electric tailgate, opening and closing automatically via foot gesture or push button, including keyless locking and starting system (Keyless Open & Start).
- Wheels: Emergency spare wheel, steel 4Jx16
- Paint finish: Metallic
- Package: Winter Premium - Heated seats, multi-stage, driver and front passenger (automatic regulation in conjunction with dual-zone automatic climate control) - Heated leather steering wheel - Electric parking brake - 2 USB ports, rear - Rear footwell heating

### Brief expert findings

Documents submitted	At the time of the inspection, the vehicle registration certificate Part 2 (title) was available, but the vehicle registration certificate Part 1 (document) was not. (Copy)
VIN comparison	The vehicle identification number (VIN) was read from the vehicle and its conformity with the submitted documents was confirmed by the undersigned during the inspection.
Inspection	The inspection conditions were sufficient for the assessment of the vehicle. Lifting equipment and/or a pit were available for examining the vehicle.
Test drive	No test drive/shunting maneuver was carried out during the inspection of the vehicle.
Engine function test	An engine test run was performed.

### Value reducing factors

No.	Component group	Description
1	Side panel - rear left side	Side panel - dent(s) - Smooth repair work
2	Front bumper	Front bumper - Scratch(es) - Smart repair
3	Wheel / tyres	Alloy rim - front right side - Scratched - Loss in value
4	Door - rear left side	Door - Dent / paintcoat damage - Smart repair
5	Boot lid / rear door	Boot lid - Scratch(es) - Paint
6	Bonnet	Bonnet - Deformed - Repair and paint
7	Vehicle glazing	Windscreen (Rissbildung) - Stone chips - Replace



## Wear and tear

No.	Component group	Description
1	Roof	Roof - Stone chips - No deduction

The vehicle shows signs of wear and tear commensurate with its age and use.

## Order/Scope of Order

An order was placed to prepare a sales report for the described vehicle. This report includes the following:

- Description of key vehicle information
- Documentation of equipment features  
*(Delivery by third-party service providers)*
- Documentation of damage, defects, missing parts
- Documentation of prior damage, unrepaired prior damage, repainting
- A brief visual or functional inspection of the equipment details, if possible.  
*(Functional testing of driver assistance systems is not included in the scope of services!)*
- a photographic documentation of the vehicle

## Basis for the order

This product is based on the guidelines for vehicle returns and valuations published by Alphabet Fleet GmbH. The expert makes the specific findings in each individual case objectively, within the framework of the prescribed standards, based on their own expertise.

The vehicle inspection takes place in a fully assembled, unassembled state.

Damage or defects that can only be detected during disassembly/diagnostic work or through further investigation remain within the realm of prognostic risk. An increased risk exists due to concealed defects caused by fraudulent misrepresentation and which were not identifiable by the expert.

Damage or defects resulting from normal use or wear and tear of the vehicle will be accepted in accordance with the applicable standard.

There was no explicit identification or monetary consideration of the expected features within the product.

Features which, in their nature and extent, slightly exceed normal use but do not constitute unacceptable damage, will be documented and indicated as signs of wear, if applicable.

Damage or defects that, according to the applicable standard, can no longer be attributed to normal use or wear and tear are listed under "Value Reducing Factors" in the product description.

Depending on the product specification, a monetary ID can be provided. If this takes place, the costs can be 100% d or pro rata depending on the vehicle's age and mileage.

## Previous damages

No apparent prior damage that had been repaired could be found on the vehicle.

## Comments

Wartungshistorie gemäß Auftraggeber Informationen.



Figure 1: Diagonal front (left)



Figure 2: Diagonal front (right)



Figure 3: Diagonal rear (left)



Figure 4: Diagonal rear (right)

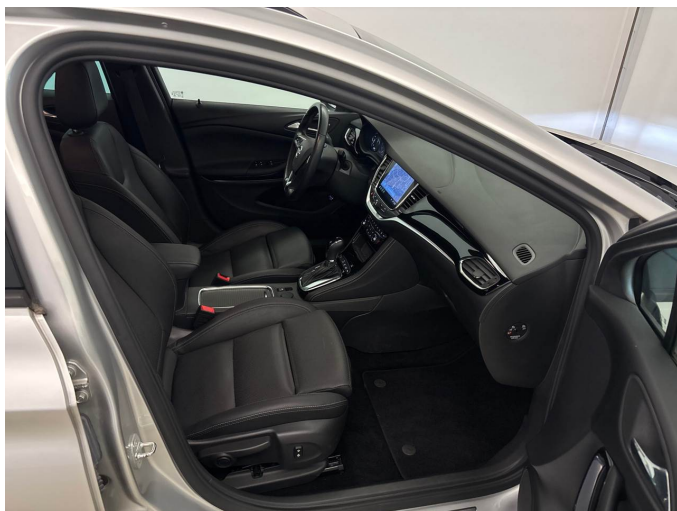


Figure 5: Interior - front



Figure 6: Interior - rear



Figure 7: Instrument cluster



Figure 8: Instrument panel



Figure 9: Interior 360° view



Figure 10: Cargo area

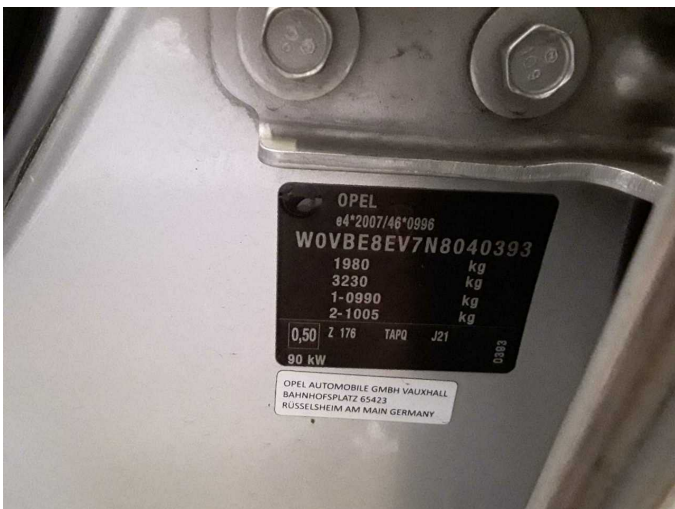


Figure 11: VIN



Figure 12: Mounted tyres





Figure 19: Misc.



Figure 20: Misc.



Figure 21: Misc.



Figure 22: Misc.



Figure 23: Misc.

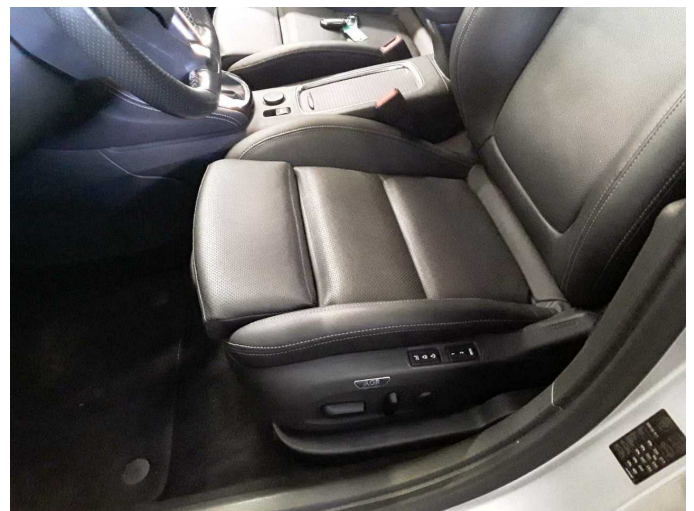


Figure 24: Misc.



Figure 25: Misc.

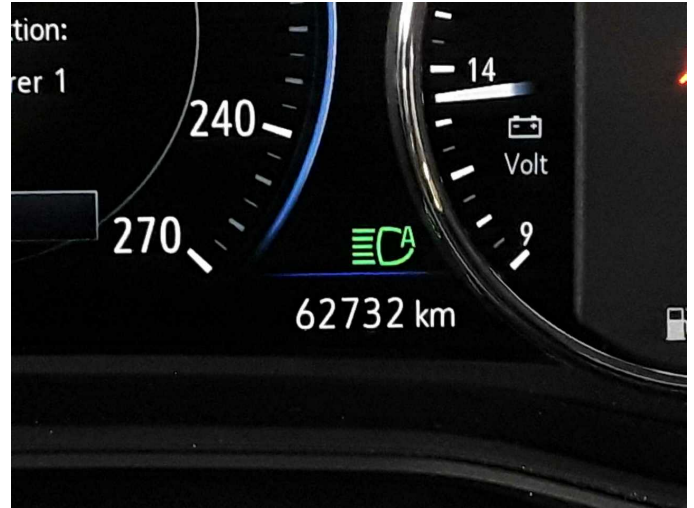


Figure 26: Misc.



Figure 27: Misc.



Figure 28: Misc.



Figure 29: Misc.



Figure 30: Misc.



Figure 31: Misc.



Figure 32: Misc.



Damage 1: Side panel - rear left side: Side panel - dent(s) - Smooth repair work



Damage 1: Side panel - rear left side: Side panel - dent(s) - Smooth repair work



Damage 2: Front bumper: Front bumper - Scratch(es) - Smart repair



Damage 2: Front bumper: Front bumper - Scratch(es) - Smart repair



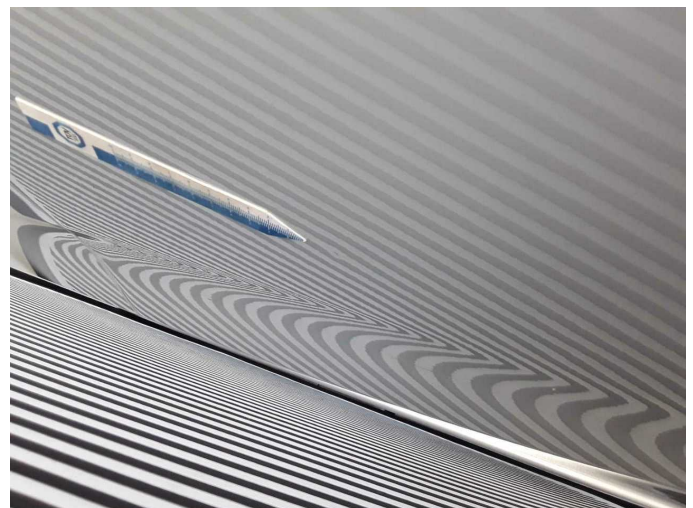
**Damage 3:** Wheel / tyres: Alloy rim - front right side - Scratched - Loss in value



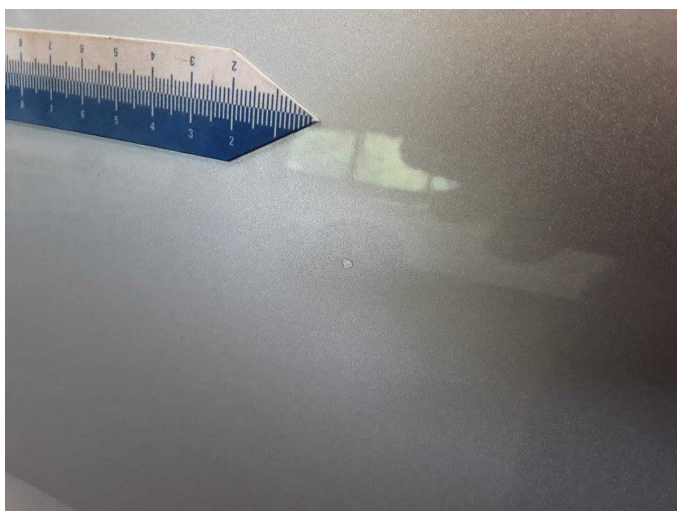
**Damage 3:** Wheel / tyres: Alloy rim - front right side - Scratched - Loss in value



**Damage 4:** Door - rear left side: Door - Dent / paintcoat damage - Smart repair



**Damage 4:** Door - rear left side: Door - Dent / paintcoat damage - Smart repair



**Damage 4:** Door - rear left side: Door - Dent / paintcoat damage - Smart repair



**Damage 5:** Boot lid / rear door: Boot lid - Scratch(es) - Paint



**Damage 5:** Boot lid / rear door: Boot lid - Scratch(es) - Paint



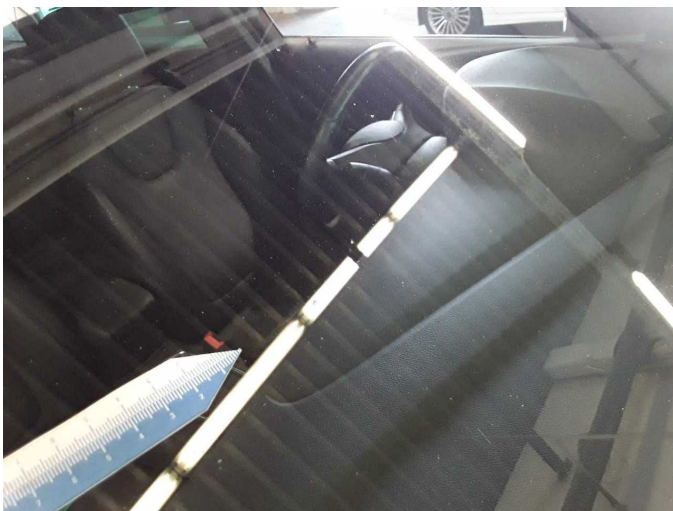
**Damage 6:** Bonnet: Bonnet - Deformed - Repair and paint



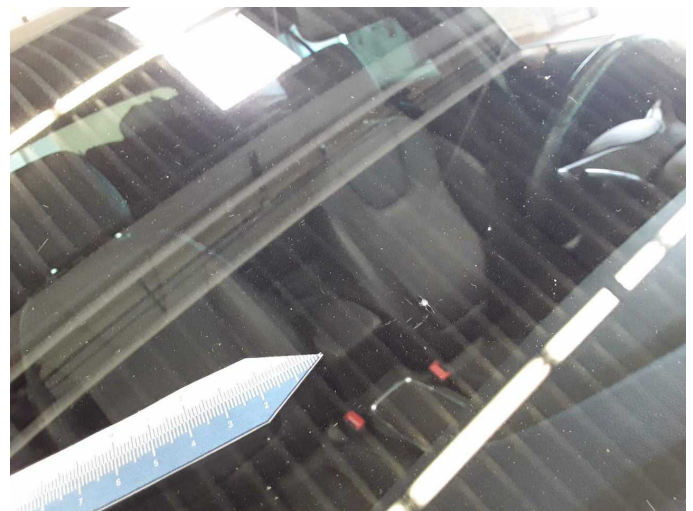
**Damage 6:** Bonnet: Bonnet - Deformed - Repair and paint



**Damage 7:** Vehicle glazing: Windscreen (Rissbildung) - Stone chips - Replace



**Damage 7:** Vehicle glazing: Windscreen (Rissbildung) - Stone chips - Replace



**Damage 7:** Vehicle glazing: Windscreen (Rissbildung) - Stone chips - Replace



**Wear and tear 1:** Roof: Roof - Stone chips - No deduction



**Wear and tear 1:** Roof: Roof - Stone chips - No deduction



# Wartungshistorie

(gemäß Auftraggeber Informationen)

Fahrgestellnummer: W0VBE8EV7N8040393

Hersteller / Modell: OPEL OPEL Astra 1.5 D Start/Stop Sports Tourer Automatik  
Ultimate

Datum	KM-Stand	Beschreibung
05.01.2026	59.565	Motoröl b. Wartung; Ölfilter ern; Ölwechsel; Wartung Sonstiges
14.04.2025	53.197	AU; Bremsscheiben + Klötze h; Bremsscheiben hinten; Regelwartungsdienst
11.10.2024	45.519	Motoröl b. Wartung; Ölfilter ern; Ölwechsel; Wartung Sonstiges
22.02.2024	37.405	Bremsflüssigkeit; Bremsflüssigkeit ern; Kraftstofffilter ern; Motoröl b. Wartung; Ölfilter ern; Regelwartungsdienst; Wartung Sonstiges
13.04.2023	27.765	Motoröl b. Wartung; Ölfilter ern; Regelwartungsdienst; Wartung Sonstiges