

Expertise

Protocol number: 46374779
Order No. / Reference: 26705177
Inspection date: 6 Jul 2026

Manufacturer: Volkswagen

Model: ID. Buzz KR 79 kWh Goal

VIN: WV2ZZZEB8TH000282



Vehicle details

Manufacturer / Type / Model / Equipment

Volkswagen ID. Buzz KR 79 kWh Goal

Vehicle Identification number WV2ZZZEB8TH000282

Mileage (Read) 16,342 km

First registration 17 Jul 2025

Number of holders 1

Next periodical technical inspection 07/2028
(Report not on hand)

Power / Engine displacement 89 kw /

Fuel type / Cylinder Electric / 0

Gearbox / Number of gears Direct drive / 1

Type of drive Rear drive

Type of vehicle Van

Colour / colour code Monosilber Metallic

Doors / Seats 5 / 5

Upholstery type Cloth

Colour of upholstery Anthracite-Black

readiness to drive Roadworthy



Vehicle details

Maintenance booklet / proof	Non-existent	Next maintenance in	378 Tag(e)
Key is / should be	2 / 2	FZG documents	ZB#2 (B) was available (copy), ZB#1 (S) was not available.
		Letter No.	HP946314
Previous damage / Accident	None detectable	Repainting	None detectable
Inspection conditions	sufficient	Lifting equipment / pit	No
Test drive	Not performed	Engine function test	Performed
readiness to drive	Roadworthy		
Manufacturer key number/ type code number	0603 / CVF 00011		
Emission standard	2017/1151;WLTP;reine Elektrofz	fine dust sticker	
Permitted total weight	3,000 kg	Empty weight	

Tyres

Mounted tyres

#	Tyre size	Type of tyre	Manufacturer	Tread depth
1)	235/55 R19 105T	Summer tyres on Light alloy	Continental	5mm / 5mm
2)	255/50 R19 107T	Summer tyres on Light alloy	Continental	6mm / 6mm

Additional tyres

#	Tyre size	Type of tyre	Manufacturer	Tread depth
1)	255/55 R18 103T	Winter tyres on Light alloy	Continental	7mm / 7mm
2)	255/50 R18 105T	Winter tyres on Light alloy	Continental	8mm / 8mm

Legend: Tread depth information for the left tire is listed first, for the right tire it is listed second on the axle in the direction of travel.

TÜV SÜD Auto Partner GmbH
Wiesenring 2
04159 Leipzig

Inspection location
Hartmann Fleet Professionals GmbH
Leerenstraße 25
29683 Bad Fallingbommel



Equipment



Standard equipment

- Distraction and fatigue detection
- Airbag for driver and front passenger (with passenger airbag deactivation)
- Ambient lighting, 10 colors
- Evasive steering assist and turn assist
- Electrically adjustable, folding and heated exterior mirrors, with passenger-side mirror lowering function.
- Exterior mirror housings in high-gloss black and door handles in body color
- Onboard literature in German
- third brake light
- DC/DC converter 3.0 KW
- Anti-theft alarm system with interior monitoring, backup horn and tow-away protection
- Three-point automatic seat belts at the front with belt and end fitting tensioners and height adjustment
- Single-tone signal horn
- Chassis: Rear damping
- Windows: Rear windows made of tinted heat-insulating glass
- Window: Fixed side window in the passenger compartment, front right
- Floor mats: Textile floor mats in the driver's cab
- Total weight: Permissible total weight 3,000 kg
- Tailgate with window cutout
- Rear window wiper/washer system with intermittent function
- Child seat attachment (front passenger seat with ISOFIX, seat in passenger compartment with ISOFIX and top tether (except middle seat of the 2nd row))
- Paint finish: Metallic - Monosilver
- LED luggage compartment lighting
- LED headlights
- Left-hand drive
- Multifunctional camera
- Navigation system "Discover Pro"
- Non-smoking version
- eCall emergency call system
- exhaust
- Package: Infotainment package (IDA voice assistant - "Discover Pro" navigation system - "Comfort" mobile phone interface with inductive charging function)
- Package: Comfort Package (ID. Buzz Box - USB-C - Multifunction leather steering wheel with touch controls, heated - Heated front seats, separately controlled - Heated windshield in heat-insulating glass - Automatically dimming rearview mirror - Intermittent windshield wipers with rain sensor - Heated windshield washer nozzles, front - Electrically adjustable, folding, and heated exterior mirrors, passenger-side mirror dipping function - High-gloss black exterior mirror housings, body-colored door handles - Luggage compartment cover - Tinted rear windows in heat-insulating glass - Ambient lighting)
- ABS
- Airbag: Side and head airbags for driver and front passenger (front center airbag)
- Armrests for front seats (inside)
- Adaptive Cruise Control (ACC) "Stop&Go"
- Exterior mirrors, driver's side convex, passenger's side convex
- Battery (58 Ah/340 A)
- Operating voltage 12 V with 12 volt socket in the cargo area
- Vehicle tool kit
- CCS charging socket
- Design badges for the D-pillar in black and white
- Three-point automatic seat belts, rear outer seats, with ECE label
- e-Sound
- Black trim around the central controls
- ESP
- Window: Rear window
- Window: Fixed side window in the passenger compartment, front left
- Electric windows, front
- Windscreen in heat-insulating glass
- Warranty: 5-year manufacturer's warranty for Germany
- Transmission: Direct drive, 1-speed
- Tailgate closing without interior unlocking function
- Interior lighting in the front and rear footwells
- Intelligent Speed Assist including speed limiter
- Air conditioning system "Air Care Climatronic" 2 zones with stationary air conditioning
- Headrests (5)
- Mode 3 Type 2 charging cable, 16 A
- LED taillights
- Headlight range control
- Country control: Germany (On-board literature in German - Special type plate for EC for M1 passenger cars - Type approval country Germany)
- Emergency braking assistant "Front Assist" (with pedestrian and cyclist detection)
- Package: Assistance package including Adaptive Cruise Control (ACC) and "Rear View" reversing camera (Rear View reversing camera - illuminated door handle recesses - central locking with keyless entry and start system "Keyless Advanced" with safe locking - anti-theft alarm system with interior monitoring, backup horn and tow-away protection - "Park Assist Plus" parking assistant including parking aid - Adaptive Cruise Control (ACC) "stop & go")
- Parking assistant "Park Assist Plus" incl. parking aid
- Upholstery: Cloth
- Proactive occupant protection system in conjunction with "Front Assist"
- Radio: App-Connect incl. App-Connect Wireless (for Apple CarPlay and Android Auto)
- Radio: Digital radio reception (DAB+)



- Radio: Diversity antenna for FM reception
- Radio accessories: 9 speakers (5 front speakers and 4 rear speakers)
- Legal transactions
- Wheels/Tires: "Tilburg" alloy wheels 8 J x 19 front, 9 J x 19 rear, in black, diamond-turned finish (Airstop tires 235/55 R 19 105 T front, Airstop tires 255/50 R 19 107 T rear)
- Wheels/Tires: Wheel bolts with enhanced theft protection
- Rear View reversing camera
- Rear seat bench and backrest can be folded down in a split configuration
- Sliding door, left side in the passenger/cargo area
- Keys for locking system: 2 vehicle keys
- Seat belt monitoring system (warning tone and light for unfastened seat belts front and rear)
- Sun visors with illuminated mirrors (with airbag label on sun visor and B-pillar)
- Telephone: Mobile phone interface "Comfort" (with inductive charging function)
- Rear drum brakes 11", with electric parking brake
- Door trim in plastic with insert, armrest in fabric
- Traffic sign recognition
- Preparation Alcohol Interlock
- Electronic immobilizer

Extra equipment

- Air conditioning: "Air Care Climatronic" (3-zone air conditioning "Air Care Climatronic" with stationary air conditioning and additional control unit in the passenger compartment)
- Controller
- Mesh partition
- Package: Design package (illuminated strip between the headlights - stainless steel pedals in "Play/Pause" design - Dynamic Light Assist high beam control for LED matrix headlights - IQ.LIGHT - LED matrix headlights with automatic headlight control, bad weather light, welcome function - dynamic headlight range control with dynamic cornering lights - LED taillights with dynamic turn signals)
- Package: Infotainment package "Plus" (IDA voice assistant - "Discover Pro" navigation system - "Harman Kardon" sound system, 12+1 speakers, 700 watts total power, digital 16-channel amplifier, subwoofer - "Comfort" mobile phone interface with inductive charging function - Head-Up Display)

- Radio: "Ready 2 Discover" radio with 32.8 cm (12.9-inch) color touchscreen
- Radio accessory: Voice assistant IDA
- Wheels, tires: Covers for alloy wheels
- Wheels/Tires: Tire pressure monitoring system
- Wheels/Tires: 19" "Tilburg" alloy wheels (4 "Tilburg" alloy wheels 8 J x 19 front, 9 J x 19 rear, in black, polished finish - Airstop tires 235/55 R 19 105 T front, Airstop tires 255/50 R 19 107 T rear - Wheel covers - Wheel bolts with enhanced anti-theft protection - On-board tool kit)
- Front disc brakes 18" (with brake pad wear indicator)
- Sliding door, on the right in the passenger/cargo area
- Speed-sensitive power steering (Servotronic)
- Seats on the left and right, in the first row
- Seats: Height adjustment for both front seats, manual
- Lane keeping assistant "Lane Assist"
- Bumpers in body color
- Carpet flooring (Dilours), reinforced
- Traction control
- Illuminated door handle recesses
- First aid kit, warning triangle and high-visibility vest
- Prepared for We Connect (Plus) or VW Connect (Plus); online update capability
- Central locking with keyless locking and starting system "Keyless Advanced" (with safe locking)

- Package: Assistance Package "Plus" including "Travel Assist" and Surround View including reversing camera (Lane Change Assist, Side Assist, Parking Assist, Exit Warning - Driver Assistance Travel Assist, Lane Keeping Assist, Emergency Assist - Surround View including reversing camera - Park Assist Plus with memory function, parking aid - Multifunction leather steering wheel, touch controls, heated - Illuminated door handle recesses - Central locking with keyless entry and start system Keyless Advanced with safe locking - Anti-theft alarm, interior monitoring, backup horn, tow-away protection - ACC Stop&Go)
- Package: Open & Close Package with "Keyless Advanced" and safe locking (illuminated door handle recesses - central locking with keyless locking and starting system "Keyless Advanced" with safe locking - electric tailgate (opening and closing) with "Easy Open" and "Easy Close" function - sliding doors left and right with soft-close function - anti-theft alarm system with interior monitoring, backup horn and tow-away protection - rear approach lighting)



Brief expert findings

Documents submitted	At the time of the inspection, the vehicle registration certificate Part 2 (title) was available, but the vehicle registration certificate Part 1 (document) was not. (Copy)
VIN comparison	The vehicle identification number (VIN) was read from the vehicle and its conformity with the submitted documents was confirmed by the undersigned during the inspection.
Inspection	The inspection conditions were sufficient for the assessment of the vehicle. No lifting equipment or pit was available for inspecting the vehicle. Therefore, inspection of the vehicle's underside was only possible to a limited extent.
Test drive	No test drive/shunting maneuver was carried out during the inspection of the vehicle.
Engine function test	An engine test run was performed.
readiness to drive	The vehicle was roadworthy at the time of inspection.

Value reducing factors

No.	Component group	Description
1	Side panel - rear left side	Wheel well extension - Scratch(es) - Smart repair
2	Side panel - rear right side	Side panel - Scratch(es) - Smart repair
3	Rear bumper	Rear bumper - Scratch(es) - Smart repair
4	Door - front left side	Door - Scratch(es) - Smart repair
5	Wheel / tyres	Alloy rim - rear right side - Scratch(es) - Loss in value
6	Vehicle glazing	Windscreen - Stone chips - Replace

Wear and tear

No.	Component group	Description
1	Wing mirror - left side	Cap - Scratch(es) - No deduction
2	Bonnet	Bonnet - Stone chips - No deduction
3	Front bumper	Front bumper - Stone chips - No deduction

The vehicle shows signs of wear and tear commensurate with its age and use.

Order/Scope of Order

An order was placed to prepare a sales report for the described vehicle. This report includes the following:

- Description of key vehicle information
- Documentation of equipment features
(*Delivery by third-party service providers*)
- Documentation of damage, defects, missing parts
- Documentation of prior damage, unrepaired prior damage, repainting
- A brief visual or functional inspection of the equipment details, if possible.
(*Functional testing of driver assistance systems is not included in the scope of services!*)
- a photographic documentation of the vehicle



Basis for the order

This product is based on the guidelines for vehicle returns and valuations published by Alphabet Fleet GmbH. The expert makes the specific findings in each individual case objectively, within the framework of the prescribed standards, based on their own expertise.

The vehicle inspection takes place in a fully assembled, unassembled state.

Damage or defects that can only be detected during disassembly/diagnostic work or through further investigation remain within the realm of prognostic risk. An increased risk exists due to concealed defects caused by fraudulent misrepresentation and which were not identifiable by the expert.

Damage or defects resulting from normal use or wear and tear of the vehicle will be accepted in accordance with the applicable standard.

There was no explicit identification or monetary consideration of the expected features within the product.

Features which, in their nature and extent, slightly exceed normal use but do not constitute unacceptable damage, will be documented and indicated as signs of wear, if applicable.

Damage or defects that, according to the applicable standard, can no longer be attributed to normal use or wear and tear are listed under "Value Reducing Factors" in the product description.

Depending on the product specification, a monetary ID can be provided. If this takes place, the costs can be 100% d or pro rata depending on the vehicle's age and mileage.

Previous damages

No apparent prior damage that had been repaired could be found on the vehicle.

Comments

- Winterradsatz ist kein Bestandteil des Auslieferungsumfangs.



Figure 1: Diagonal front (left)



Figure 2: Diagonal front (right)



Figure 3: Diagonal rear (left)



Figure 4: Diagonal rear (right)



Figure 5: Interior - front



Figure 6: Interior - rear



Figure 7: Instrument cluster



Figure 8: Instrument panel



Figure 9: Interior 360° view

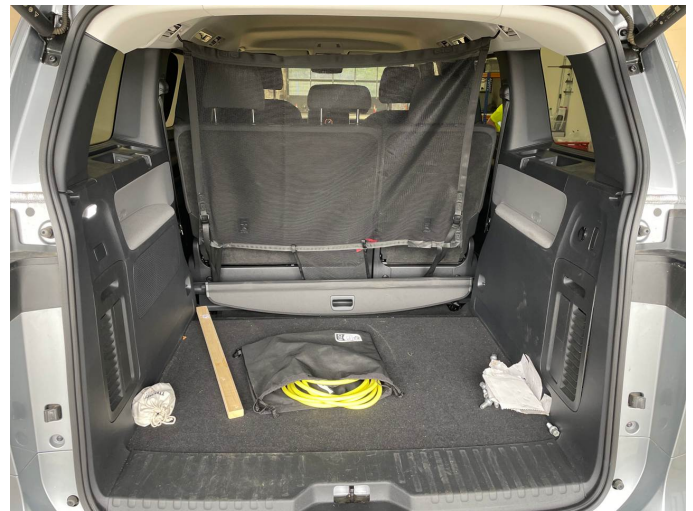


Figure 10: Cargo area



Figure 11: VIN



Figure 12: Mounted tyres



Figure 13: Documents



Figure 14: Navigation

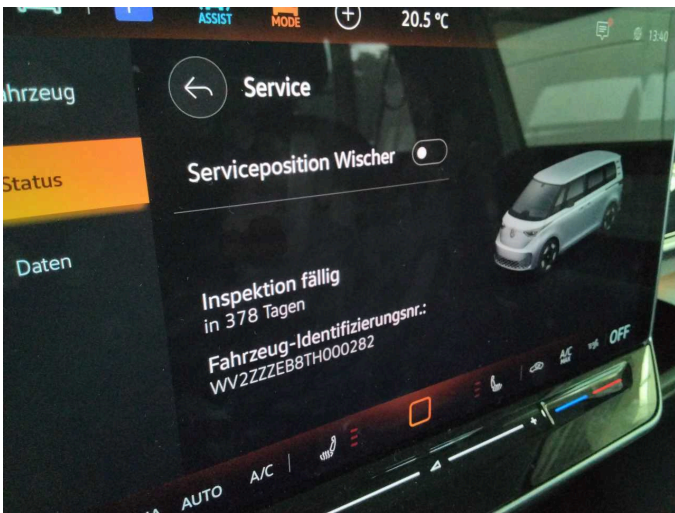


Figure 15: Misc.



Figure 16: Misc.



Figure 17: Misc.



Figure 18: Misc.



Figure 19: Misc.



Figure 20: Misc.



Figure 21: Misc.



Figure 22: Misc.

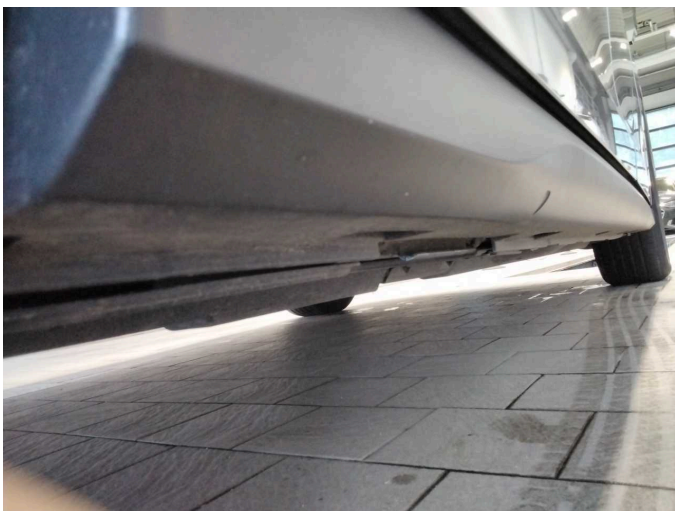


Figure 23: Misc.



Figure 24: Misc.



Figure 25: Misc.



Figure 26: Misc.

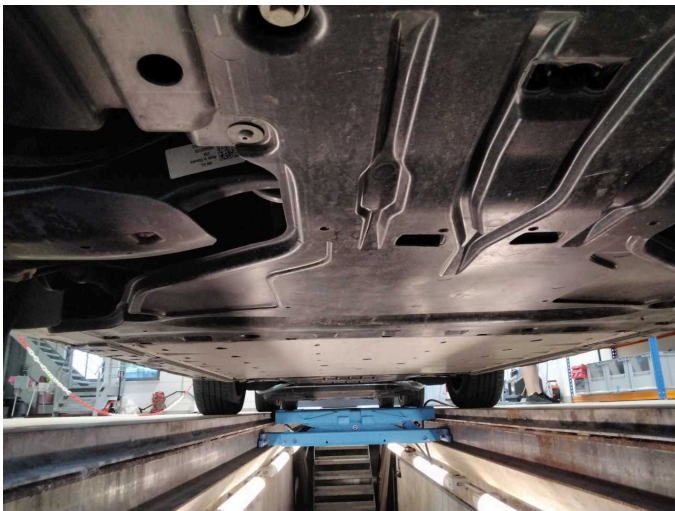


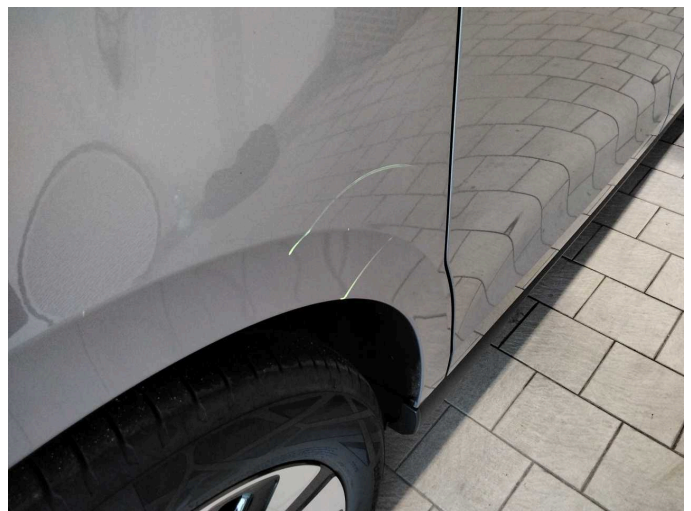
Figure 27: Misc.



Damage 1: Side panel - rear left side: Wheel well extension - Scratch(es)
- Smart repair



Damage 1: Side panel - rear left side: Wheel well extension - Scratch(es)
- Smart repair



Damage 2: Side panel - rear right side: Side panel - Scratch(es) - Smart
repair



Damage 2: Side panel - rear right side: Side panel - Scratch(es) - Smart repair



Damage 3: Rear bumper: Rear bumper - Scratch(es) - Smart repair



Damage 3: Rear bumper: Rear bumper - Scratch(es) - Smart repair



Damage 4: Door - front left side: Door - Scratch(es) - Smart repair



Damage 4: Door - front left side: Door - Scratch(es) - Smart repair



Damage 5: Wheel / tyres: Alloy rim - rear right side - Scratch(es) - Loss in value



Damage 5: Wheel / tyres: Alloy rim - rear right side - Scratch(es) - Loss in value



Damage 6: Vehicle glazing: Windscreen - Stone chips - Replace



Damage 6: Vehicle glazing: Windscreen - Stone chips - Replace