

## Expertise

Protocol number: 45512544  
Order No. / Reference: 26367000  
Inspection date: 18 May 2026

Manufacturer: Opel

Model: Astra Sports Tourer 1.5 D Automatik Business Edition

VIN: VXKFCYHZ8R1017765



### Vehicle details

#### Manufacturer / Type / Model / Equipment

Opel Astra Sports Tourer 1.5 D Automatik Business Edition

**Vehicle Identification number** VXKFCYHZ8R1017765

**Mileage (Read)** 100,843 km

**First registration** 27 Mar 2024

**Number of holders** 1

**Next periodical technical inspection** 03/2027  
(Report not on hand)

**Power / Engine displacement** 96 kw / 1,499 ccm

**Fuel type / Cylinder** Diesel / 4

**Gearbox / Number of gears** Automatic / 8

**Type of drive** Front drive

**Type of vehicle** Station wagon

**Colour / colour code** Karbon Schwarz Metallic

**Doors / Seats** 5 / 5

**Upholstery type** Cloth

**Colour of upholstery** Black-Grey



## Vehicle details

<b>Maintenance booklet / proof</b>	digital proof / complete	<b>Next maintenance in</b>	15,600 km
<b>Last service on / at</b>	01/2026 at 86,509 km		
<b>Key is / should be</b>	2 / 2	<b>FZG documents</b>	ZB#2 (B) was available (copy), ZB#1 (S) was not available.
		<b>Letter No.</b>	HB439259
<b>Previous damage / Accident</b>	None detectable	<b>Repainting</b>	None detectable
<b>Inspection conditions</b>	sufficient	<b>Lifting equipment / pit</b>	yes
<b>Test drive</b>	Not performed	<b>Engine function test</b>	Performed
<b>Manufacturer key number/ type code number</b>	1889 / AEY 00109		
<b>Emission standard</b>	EURO6;WLTP;EA;PI/CI;M, N1, N2	<b>fine dust sticker</b>	
<b>Permitted total weight</b>	1,980 kg	<b>Empty weight</b>	

## Tyres

**Mounted tyres**

#	Tyre size	Type of tyre	Manufacturer	Tread depth
1)	205/55 R16 91H	Winter tyres on Steel rim with wheel cover	Continental	5mm / 5mm
2)	205/55 R16 91H	Winter tyres on Steel rim with wheel cover	Continental	6mm / 6mm

**Additional tyres**

#	Tyre size	Type of tyre	Manufacturer	Tread depth
1)	205/55 R16 94V	Summer tyres on Light alloy	Michelin	6mm / 6mm
2)	205/55 R16 94V	Summer tyres on Light alloy	Michelin	6mm / 6mm

**Replacement**

Typ	Tyre size	Type of tyre	Manufacturer	Tread depth
	Tirefit	Expiration date 10/2028		

**Legend: Tread depth information for the left tire is listed first, for the right tire it is listed second on the axle in the direction of travel.**



## Equipment

### Standard equipment

- Storage compartments
- Airbag: Front airbags, driver and front passenger
- Airbag: Front and rear outer head airbags
- Automatic activation of the hazard warning lights
- Exterior mirror housings in black
- Hill Start Assist
- third brake light
- Diesel particulate filter (DPF) maintenance-free
- Electronic brake force distribution (EBD)
- Electric windows front and rear
- Transmission: 8-speed automatic transmission
- rear window wiper
- automatic climate control
- Paintwork: Roof in car color
- LED headlights
- Steering wheel heating
- Illuminated makeup mirrors in both sun visors
- Multimedia infotainment system
- Opel Vizor with frame in high-gloss black
- Tire repair kit
- Wheels: Alloy wheels 7 J x 16 (5 double spokes) in silver
- Rear seat backrest folds forward in a 40:20:40 split
- Seat belts: Three-point seat belts in all seats
- Heated seats, driver and passenger
- Start/Stop System
- Pre-wiring for ISOFIX child seat mounting system
- Central locking with remote control

- Airbag: Chest-pelvis-side airbags, driver and front passenger
- Anti-lock braking system (ABS)
- Exterior mirrors, electrically adjustable, heated and manually foldable
- On-board computer
- Roof design line, in black
- Tachometer
- Electronic Stability Program (ESP) and Traction Control with engine and brake intervention (TCPlus)
- Back window, heater
- Wiring harness for trailer hitch
- Front headrests and 3 rear headrests, height adjustable
- LED interior lighting
- Steering wheel: Leather steering wheel, flattened, perforated, with steering wheel remote control and paddle shifters
- Fog light
- Electric parking brake
- Tire pressure monitoring system
- 180-degree reversing camera
- Keyless Start system
- Seats: Ergonomic active driver's seat, Modene fabric
- Solar Protect thermal insulation glazing
- 12V power outlet in the center console
- Electronic immobilizer

### Extra equipment

- Paint finish: Metallic
- Navigation system

## Brief expert findings

Documents submitted	At the time of the inspection, the vehicle registration certificate Part 2 (title) was available, but the vehicle registration certificate Part 1 (document) was not. (Copy)
VIN comparison	The vehicle identification number (VIN) was read from the vehicle and its conformity with the submitted documents was confirmed by the undersigned during the inspection.
Inspection	The inspection conditions were sufficient for the assessment of the vehicle. Lifting equipment and/or a pit were available for examining the vehicle.
Test drive	No test drive/shunting maneuver was carried out during the inspection of the vehicle.
Engine function test	An engine test run was performed.



## Value reducing factors

No.	Component group	Description
1	Wheel / tyres	Wheel cover - front right side - Missing - Replace
2	Wheel / tyres	Wheel rim - front right side - Deformed - Replace
3	Door - front left side	Door edge - Scratched - Smart repair
4	Side panel - rear right side	Side panel (Aufpolieren) - Scratch(es) - Smart repair
5	Rear bumper	Rear bumper - Scratched - Smart repair
6	Door - rear right side	Door - Scratched - Smart repair
7	Interior	Interior (Abdeckung Becherhalter) - does not comply with manufacturer's specifications - Replace

## Wear and tear

No.	Component group	Description
1	Front bumper	Front bumper - Stone chips - No deduction
2	Bonnet	Bonnet - Stone chips - No deduction

The vehicle shows signs of wear and tear commensurate with its age and use.

## Missing parts

### Description

Equipment - Warning triangle

## Order/Scope of Order

An order was placed to prepare a sales report for the described vehicle. This report includes the following:

- Description of key vehicle information
- Documentation of equipment features  
(*Delivery by third-party service providers*)
- Documentation of damage, defects, missing parts
- Documentation of prior damage, unrepaired prior damage, repainting
- A brief visual or functional inspection of the equipment details, if possible.  
(*Functional testing of driver assistance systems is not included in the scope of services!*)
- a photographic documentation of the vehicle

## Basis for the order

This product is based on the guidelines for vehicle returns and valuations published by Alphabet Fleet GmbH. The expert makes the specific findings in each individual case objectively, within the framework of the prescribed standards, based on their own expertise.

The vehicle inspection takes place in a fully assembled, unassembled state.

Damage or defects that can only be detected during disassembly/diagnostic work or through further investigation remain within the realm of prognostic risk. An increased risk exists due to concealed defects caused by fraudulent misrepresentation and which were not identifiable by the expert.

Damage or defects resulting from normal use or wear and tear of the vehicle will be accepted in accordance with the applicable standard.

There was no explicit identification or monetary consideration of the expected features within the product.

Features which, in their nature and extent, slightly exceed normal use but do not constitute unacceptable damage, will be documented and indicated as signs of wear, if applicable.

Damage or defects that, according to the applicable standard, can no longer be attributed to normal use or wear and tear are listed under "Value Reducing Factors" in the product description.

Depending on the product specification, a monetary ID can be provided. If this takes place, the costs can be 100% d or pro rata depending on the vehicle's age and mileage.



## Previous damages

No apparent prior damage that had been repaired could be found on the vehicle.



Figure 1: Diagonal front (left)



Figure 2: Diagonal front (right)



Figure 3: Diagonal rear (left)



Figure 4: Diagonal rear (right)



Figure 5: Interior - front

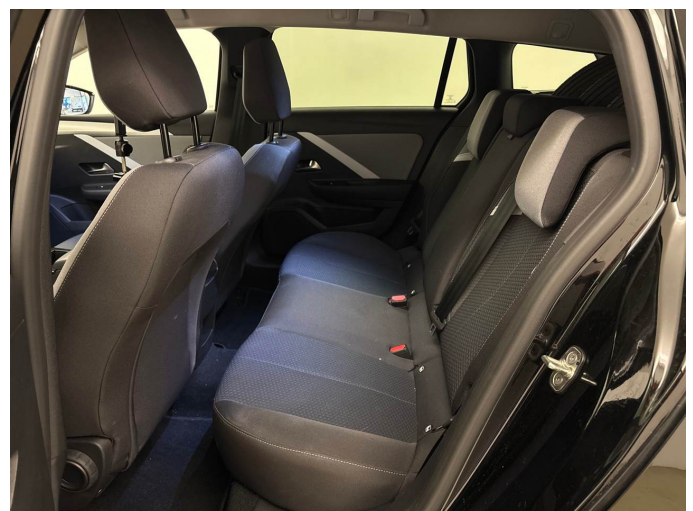


Figure 6: Interior - rear



Figure 7: Instrument cluster



Figure 8: Instrument panel



Figure 9: Interior 360° view



Figure 10: Cargo area

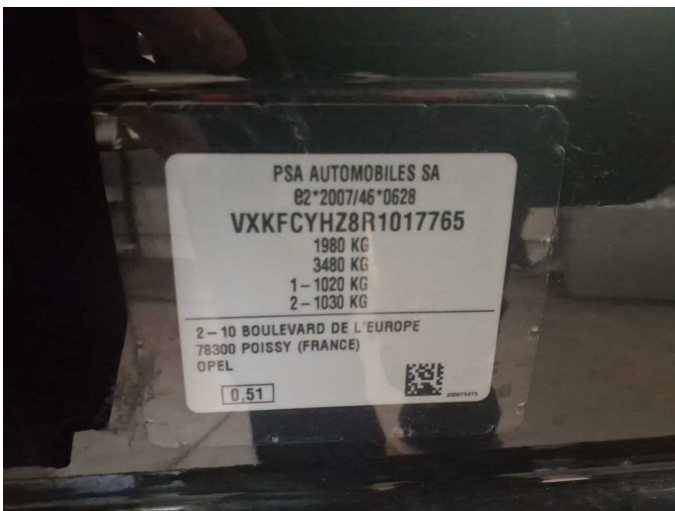


Figure 11: VIN



Figure 12: Mounted tyres

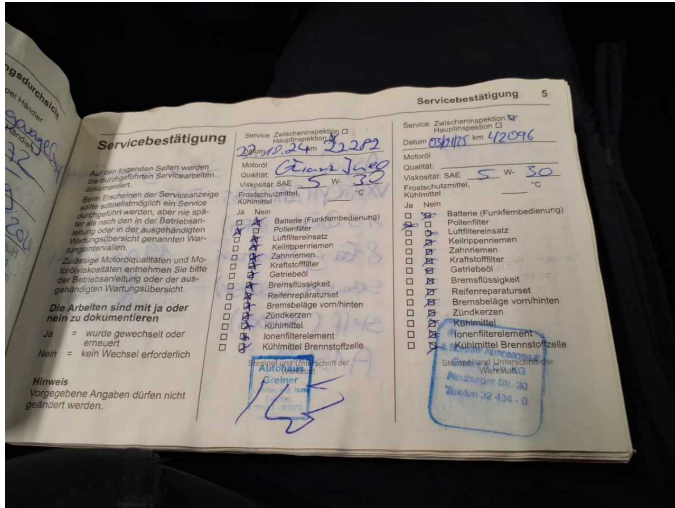


Figure 13: Documents



Figure 14: Documents

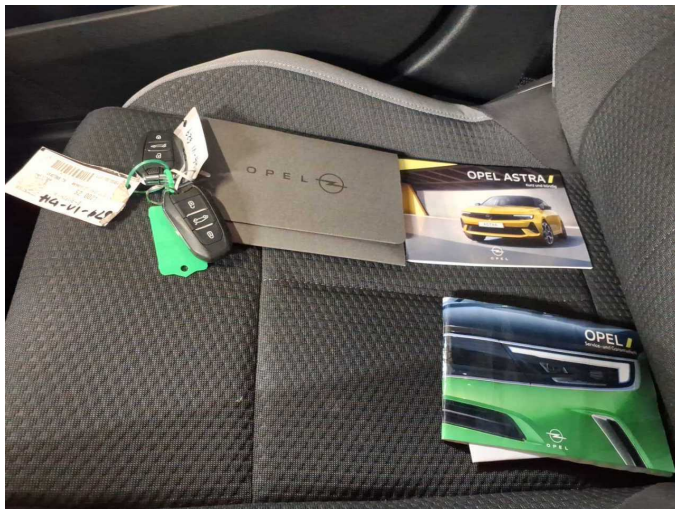


Figure 15: Documents

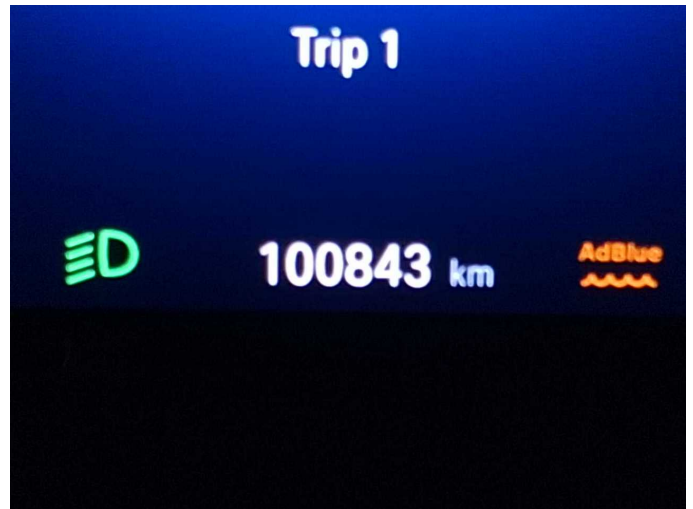


Figure 16: Documents

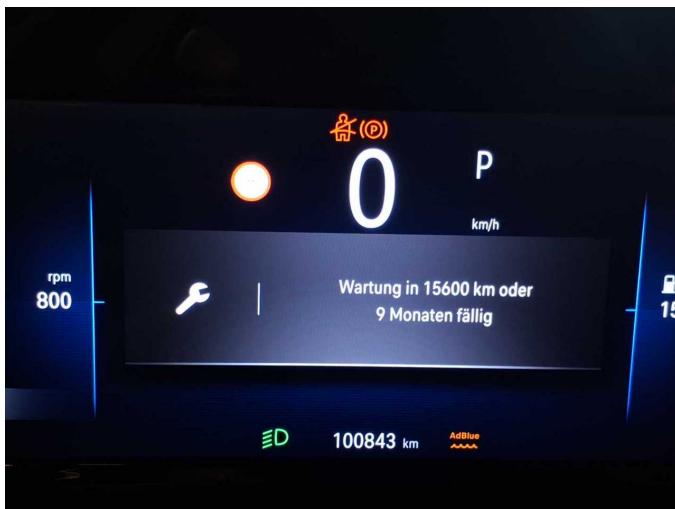


Figure 17: Documents



Figure 18: Additional tyres

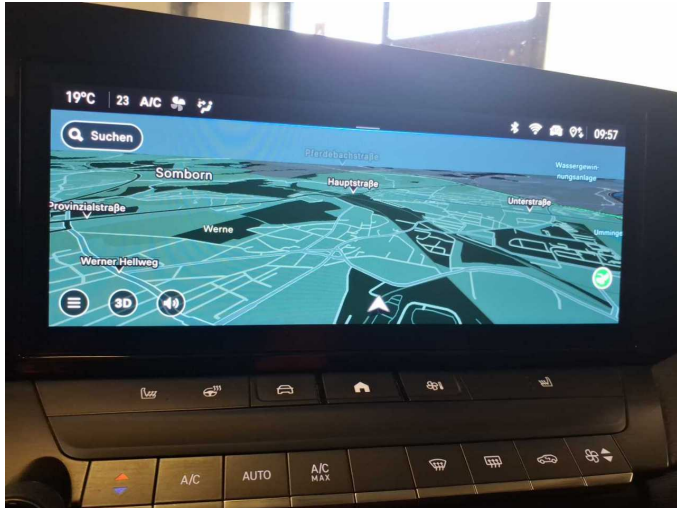


Figure 19: Navigation



Figure 20: Misc.



Figure 21: Misc.



Figure 22: Misc.



Figure 23: Misc.



Figure 24: Misc.



Figure 25: Misc.



Figure 26: Misc.

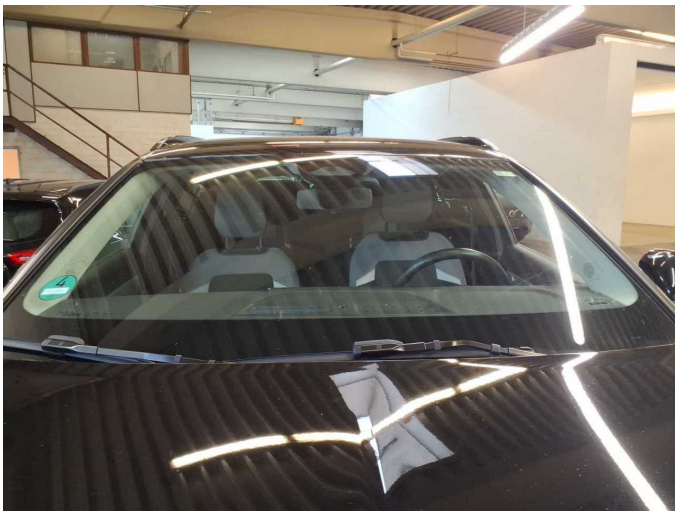


Figure 27: Misc.

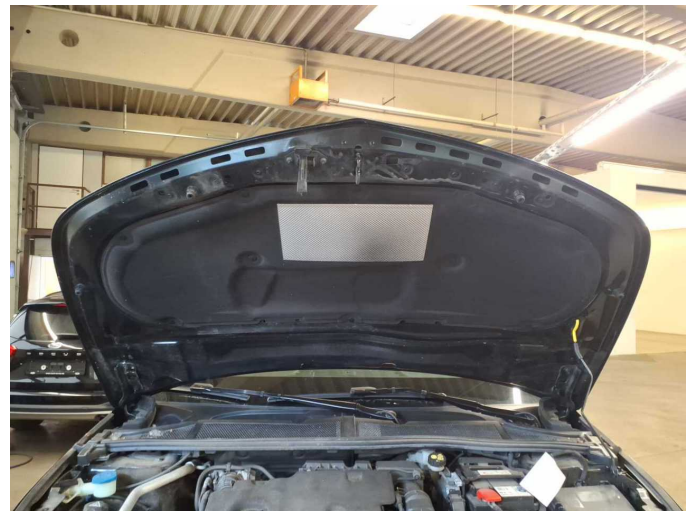


Figure 28: Misc.

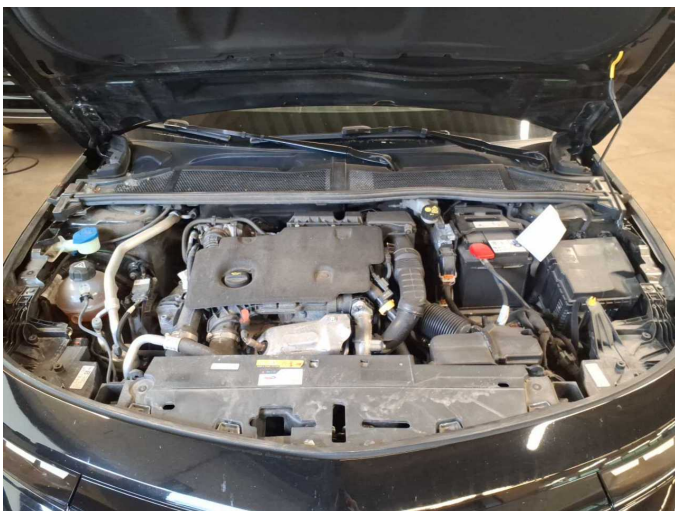


Figure 29: Misc.



Figure 30: Misc.



Figure 31: Misc.



Figure 32: Misc.



Damage 1: Wheel / tyres: Wheel cover - front right side - Missing - Replace



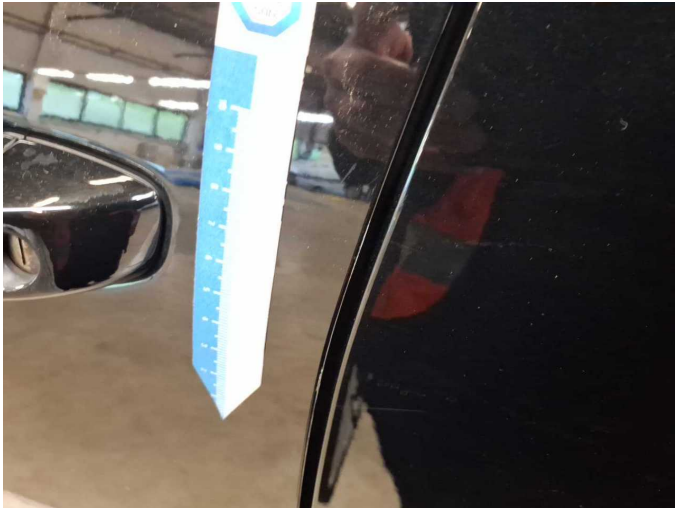
Damage 2: Wheel / tyres: Wheel rim - front right side - Deformed - Replace



Damage 2: Wheel / tyres: Wheel rim - front right side - Deformed - Replace



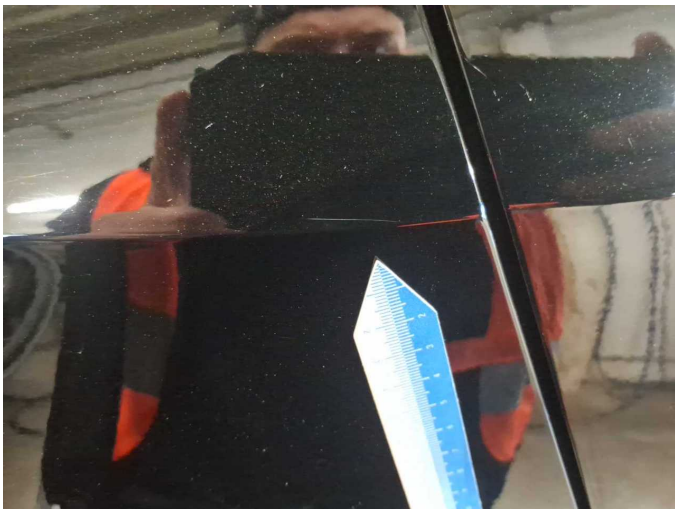
Damage 3: Door - front left side: Door edge - Scratched - Smart repair



**Damage 3:** Door - front left side: Door edge - Scratched - Smart repair



**Damage 4:** Side panel - rear right side: Side panel (Aufpolieren) - Scratch(es) - Smart repair



**Damage 4:** Side panel - rear right side: Side panel (Aufpolieren) - Scratch(es) - Smart repair



**Damage 5:** Rear bumper: Rear bumper - Scratched - Smart repair



**Damage 5:** Rear bumper: Rear bumper - Scratched - Smart repair



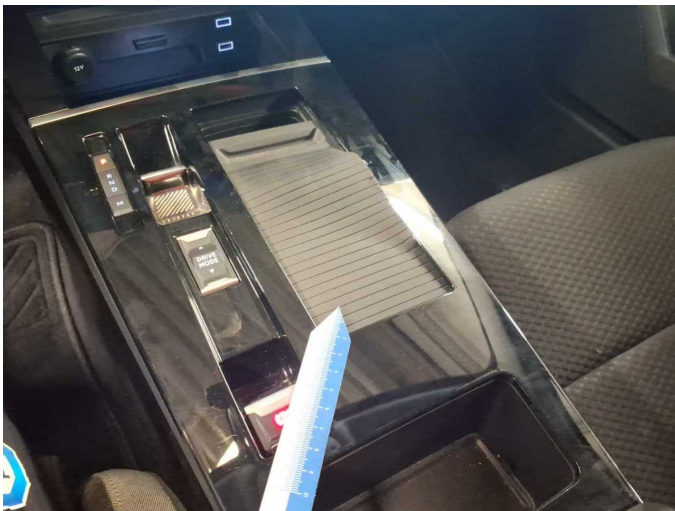
**Damage 5:** Rear bumper: Rear bumper - Scratched - Smart repair



**Damage 6:** Door - rear right side: Door - Scratched - Smart repair



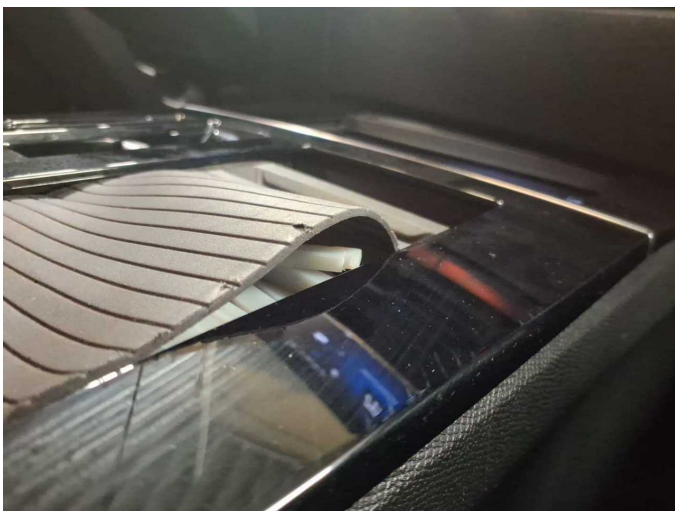
**Damage 6:** Door - rear right side: Door - Scratched - Smart repair



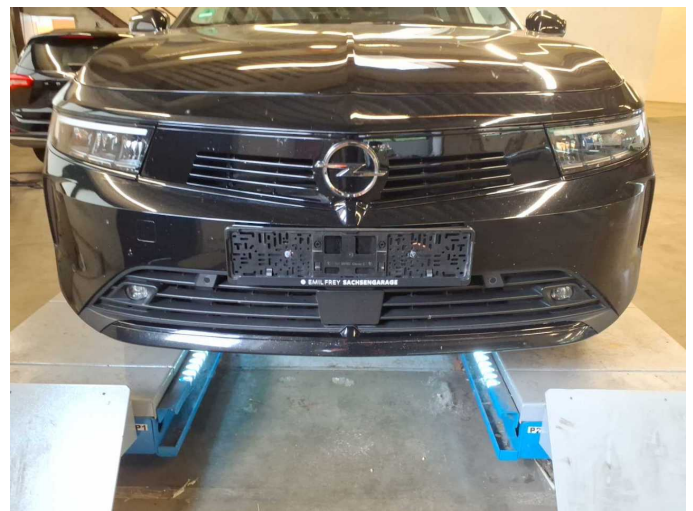
**Damage 7:** Interior: Interior (Abdeckung Becherhalter) - does not comply with manufacturer's specifications - Replace



**Damage 7:** Interior: Interior (Abdeckung Becherhalter) - does not comply with manufacturer's specifications - Replace



**Damage 7:** Interior: Interior (Abdeckung Becherhalter) - does not comply with manufacturer's specifications - Replace



**Wear and tear 1:** Front bumper: Front bumper - Stone chips - No deduction



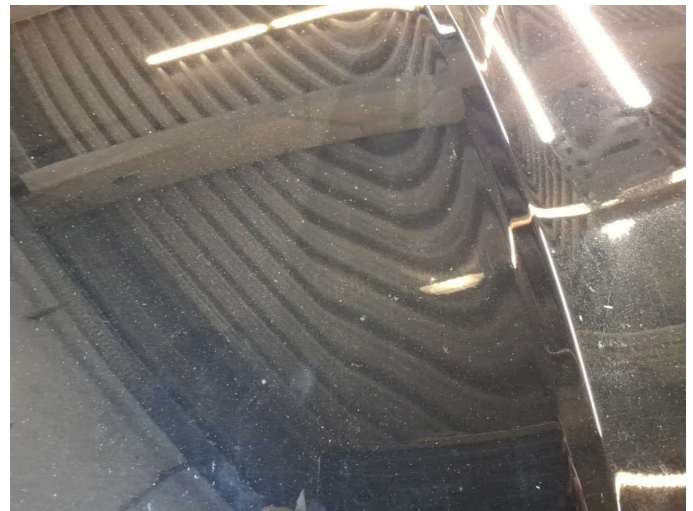
**Wear and tear 1:** Front bumper: Front bumper - Stone chips - No deduction



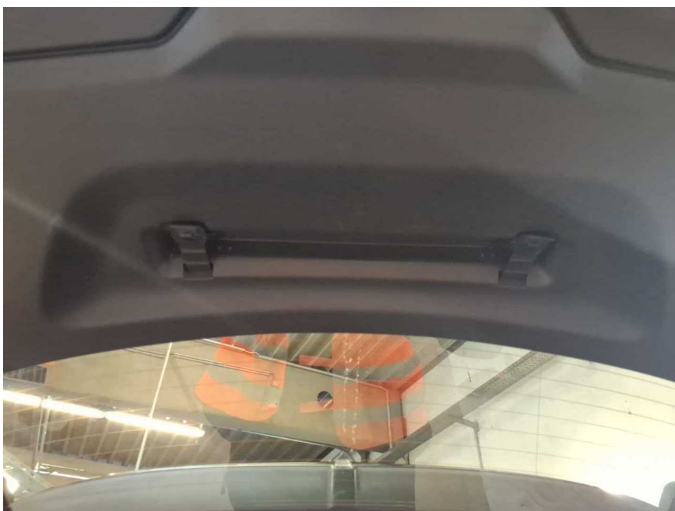
**Wear and tear 1:** Front bumper: Front bumper - Stone chips - No deduction



**Wear and tear 2:** Bonnet: Bonnet - Stone chips - No deduction



**Wear and tear 2:** Bonnet: Bonnet - Stone chips - No deduction



**Missing part 1:** Equipment: Warning triangle - Missing - Replace



# Wartungshistorie

(gemäß Auftraggeber Informationen)

Fahrgestellnummer: VXXFCYHZ8R1017765

Hersteller / Modell: OPEL OPEL Astra Sports Tourer 1.5 D Automatik Business Edition

Datum	KM-Stand	Beschreibung
20.01.2026	86.509	Bremsflüssigkeit; Bremsflüssigkeit ern; Bremsklötze hinten; Bremsscheiben hinten; Motoröl b. Wartung; Ölfilter ern; Regelwartungsdienst; Wartung Sonstiges
19.09.2025	66.939	Kraftstofffilter ern; Luftfiltereinsatz ern; Motoröl b. Wartung; Ölfilter ern; Regelwartungsdienst; Wartung Sonstiges
28.03.2025	42.096	Motoröl b. Wartung; Ölfilter ern; Regelwartungsdienst; Wartung Sonstiges
22.10.2024	22.282	Motoröl b. Wartung; Ölfilter ern; Regelwartungsdienst; Wartung Sonstiges