

## Expertise

Protocol number: 46204936  
Order No. / Reference: 26424363  
Inspection date: 19 Jun 2026

Manufacturer: Skoda

Model: Kodiaq 2.0 TDI 4x4 DSG Sportline

VIN: TMBLN9NS4P8015982



### Vehicle details

#### Manufacturer / Type / Model / Equipment

Skoda Kodiaq 2.0 TDI 4x4 DSG Sportline

**Vehicle Identification number** TMBLN9NS4P8015982

**Mileage (Read)** 69,198 km

**First registration** 20 Jan 2023

**Number of holders** 1

**Next periodical technical inspection** 05/2028  
(Report on hand)

**Power / Engine displacement** 147 kw / 1,968 ccm

**Fuel type / Cylinder** Diesel / 4

**Gearbox / Number of gears** Automatic / 7

**Type of drive** All-wheel drive

**Type of vehicle** SUV

**Colour / colour code** Race Blau Metallic

**Doors / Seats** 5 / 5

**Upholstery type** Alcantara / Leather

**Colour of upholstery** Black-Anthracite

**Re-import** no

**readiness to drive** Roadworthy



Vehicle details			
<b>Maintenance booklet / proof</b>	digital proof / complete	<b>Next maintenance in</b>	16,800 km
<b>Last service on / at</b>	06/2025 at 60,075 km		
<b>Key is / should be</b>	2 / 2	<b>FZG documents</b>	ZB#2 (B) was available (copy), ZB#1 (S) was not available.
		<b>Letter No.</b>	GN460026
<b>Previous damage / Accident</b>	None detectable	<b>Repainting</b>	None detectable
<b>Inspection conditions</b>	sufficient	<b>Lifting equipment / pit</b>	yes
<b>Test drive</b>	Not performed	<b>Engine function test</b>	Performed
<b>readiness to drive</b>	Roadworthy		
<b>Manufacturer key number/ type code number</b>	8004 / AVW 00604		
<b>Emission standard</b>	EURO6;WLTP;AP;PI/CI; M, N1 I	<b>fine dust sticker</b>	
<b>Permitted total weight</b>	2,410 kg	<b>Empty weight</b>	

## Tyres

Mounted tyres				
#	Tyre size	Type of tyre	Manufacturer	Tread depth
1)	255/40 R20 101V	Summer tyres on Light alloy	Continental	4mm / 4mm
2)	255/40 R20 101V	Summer tyres on Light alloy	Continental	5mm / 5mm
Additional tyres				
#	Tyre size	Type of tyre	Manufacturer	Tread depth
1)	235/55 R18 100H	Winter tyres on Light alloy	Continental	5mm / 5mm
2)	235/55 R18 100H	Winter tyres on Light alloy	Continental	7mm / 7mm
Replacement				
Typ	Tyre size	Type of tyre	Manufacturer	Tread depth
N	145/85 R18 103M	Summer tyres on Steel	Sonstige	3 mm

**Legend: Tread depth information for the left tire is listed first, for the right tire it is listed second on the axle in the direction of travel.**



## Equipment

### Standard equipment

- 12V socket in the center console and in the trunk
- Storage compartments behind the wheel arches in the trunk
- Airbag, driver's knee airbag
- Airbag, front side airbags
- Permanent all-wheel drive
- Traction control (ASR)
- Electrically folding exterior mirrors including interior and driver's side mirrors with automatic dimming
- Hill start assist
- Hydraulic brake assist (HBA)
- Black headliner
- Dark Carbon decorative inlay
- Digital Cockpit (8")
- Third brake light
- eCall
- Electronic transverse differential lock (XDS+)
- Driving light assistant and rain sensor
- Chassis: Adaptive chassis DCC including driving profile selection
- Front radar assistant including city emergency braking function with pedestrian detection
- Closed storage compartment on the driver's side
- Transmission: 7-speed dual-clutch transmission (DSG)
- Illuminated glove compartment
- Boot cover, roll-up and removable
- Front headrests are fixed, rear headrests are height-adjustable.
- LED taillights in crystal glass look with animated turn signals
- Reading lights at the front of the headliner
- Rear center armrest with cup holders
- Engine drag torque control (MSR)
- Fog lights with integrated LED daytime running lights
- Stainless steel pedal design
- Progressive steering
- Radio accessories: 8 speakers
- Radio accessories: Wireless SmartLink
- Rear seat backrest split 60:40, foldable, longitudinally adjustable, backrest angle adjustable
- Electromechanical power steering
- Seats: Heated front and outer rear seats
- Seats: Electrically adjustable front seats with memory function
- Skoda Care Connect
- Sun visor on driver and passenger side with illuminated vanity mirror
- Sunset
- Front door sill trims
- Variable fastening concept in the trunk
- Immobiliser
- Storage compartment on the left wheel arch
- front aero windshield wipers
- Airbag, driver and passenger
- Airbag, head airbags
- Allergen filter
- Anti-lock braking system (ABS)
- Dashboard in black / black, door trim in black with microfiber inlay
- Electrically adjustable and heated exterior mirrors with integrated side indicators
- Care Connect: Proactive services (10-year term)
- Roof rails, black
- Diesel particulate filter
- Tachometer
- Easy Start (start-stop button)
- Electronic parking brake including auto-hold function
- ESC Electronic Stability Control
- Driving profile selection
- Electric windows front and rear
- High Beam Assist (Light Assist)
- front and rear floor mats
- Front and rear footwell lighting
- Cruise control
- Tinted windows
- Isofix anchorage on the outer rear seats including top tether
- LED ambient lighting
- LED matrix headlights and dynamic high beam assist (Light Assist)
- Steering wheel: Sport leather steering wheel with multifunction buttons including paddle shifters.
- Front center armrest, including storage compartment
- Multi-collision brake
- Rear parking sensors
- Upholstery: Microfiber Sport-Black
- Radio: Bolero infotainment system
- Radio accessories: Digital radio reception DAB+
- Tire pressure monitoring
- Heated windshield washer nozzles, front
- Headlights washer / wiper system
- Kodiaq seat belts
- Seats: Adjustable lumbar support in the front seats
- Seats: Height-adjustable front seats
- Seats: Remote release of the rear seat backrests (2nd row) in the boot
- Speed limiter
- Bumpers painted in body color
- Telephone: Convenient hands-free telephone system including phone box
- Lashing eyes in the trunk
- Central locking with remote control



### Extra equipment

- Trailer maneuvering assistant (Trailer Assist) and park assist (Park Assist with front and rear parking sensors)
- Area View 360°
- ISOFIX preparation on the front passenger seat
- Climatronic air conditioning (3-zone) (fully automatic, separately adjustable for driver, front passenger and rear seats, including humidity sensor and odor and allergen filter)
- Package: Business Columbus (Sportline) (Dynamic radio navigation system Columbus - 9.2" capacitive color display - Digital Cockpit Plus (10") - Driver fatigue detection - 230V socket and a USB charging port (Type-C) on the back of the front center armrest - KESSY keyless entry - Electric tailgate operation including comfort opening - Luggage net partition - Infotainment Online (3-year subscription))
- Wheels: 20" Ignite anthracite alloy wheels, polished (8.5Jx20 tires 255/40 R20 101V ET41 - active tire pressure monitoring system)
- Swiveling trailer hitch (with electric release, including trailer stabilization)
- Traveller assistance system (DSG) (Predictive Adaptive Cruise Control pACC (control range up to 210 km/h) - Lane Assist - Adaptive Lane Guidance - Traffic Jam and Emergency Assist - Traffic Sign Recognition)
- boot liner
- Paint finish: Metallic / Pearl effect
- Electric panoramic sunroof including sunshade (no glasses compartment in the headliner)
- Proactive occupant protection including rear side airbags
- Radio accessories: CANTON sound system
- Wheels: 18" steel spare wheel, space-saving (tire 145/85 R18 incl. jack, wheel bolt wrench, load floor cover replaces tire mobility kit)
- Engine underbody protection
- Running boards

### Brief expert findings

Documents submitted	At the time of the inspection, the vehicle registration certificate Part 2 (title) was available, but the vehicle registration certificate Part 1 (document) was not. (Copy)
VIN comparison	The vehicle identification number (VIN) was read from the vehicle and its conformity with the submitted documents was confirmed by the undersigned during the inspection.
Inspection	The inspection conditions were sufficient for the assessment of the vehicle. Lifting equipment and/or a pit were available for examining the vehicle.
Test drive	No test drive/shunting maneuver was carried out during the inspection of the vehicle.
Engine function test	An engine test run was performed.
readiness to drive	The vehicle was roadworthy at the time of inspection.

### Value reducing factors

No.	Component group	Description
1	Rear bumper	Rear bumper (oben) - Scratch(es) - Smart repair
2	Boot lid / rear door	Boot lid - dent(s) - Smooth repair work
3	Front bumper	Front bumper - Scratched - Smart repair
4	Door - rear right side	Brightware - lower - Scratched - Smart repair
5	Trim / covers	Boot lid - interior trim - Scratched - Replace
6	Side panel - rear left side	Sill - Dent / paintcoat damage - Smart repair
7	Rear bumper	Rear bumper - Scratched - Smart repair
8	Side panel - rear left side	Wheel well extension - Deformed - Replace
9	Wheel / tyres	Alloy rim - front left side - Scratched - Loss in value
10	Wheel / tyres	Alloy rim - rear right side - Scratched - Replace
11	Wheel / tyres	Alloy rim - front right side - Scratched - Replace
12	Bonnet	Bonnet - Dent / paintcoat damage - Repair and paint
13	Vehicle glazing	Windscreen (Rissbildung) - Stone chips - Replace



## Wear and tear

No.	Component group	Description
1	Rear bumper	Spoiler - Scratch(es) - No deduction

The vehicle shows signs of wear and tear commensurate with its age and use.

## Order/Scope of Order

An order was placed to prepare a sales report for the described vehicle. This report includes the following:

- Description of key vehicle information
- Documentation of equipment features  
(*Delivery by third-party service providers*)
- Documentation of damage, defects, missing parts
- Documentation of prior damage, unrepaired prior damage, repainting
- A brief visual or functional inspection of the equipment details, if possible.  
(*Functional testing of driver assistance systems is not included in the scope of services!*)
- a photographic documentation of the vehicle

## Basis for the order

This product is based on the guidelines for vehicle returns and valuations published by Alphabet Fleet GmbH. The expert makes the specific findings in each individual case objectively, within the framework of the prescribed standards, based on their own expertise.

The vehicle inspection takes place in a fully assembled, unassembled state.

Damage or defects that can only be detected during disassembly/diagnostic work or through further investigation remain within the realm of prognostic risk. An increased risk exists due to concealed defects caused by fraudulent misrepresentation and which were not identifiable by the expert.

Damage or defects resulting from normal use or wear and tear of the vehicle will be accepted in accordance with the applicable standard.

There was no explicit identification or monetary consideration of the expected features within the product.

Features which, in their nature and extent, slightly exceed normal use but do not constitute unacceptable damage, will be documented and indicated as signs of wear, if applicable.

Damage or defects that, according to the applicable standard, can no longer be attributed to normal use or wear and tear are listed under "Value Reducing Factors" in the product description.

Depending on the product specification, a monetary ID can be provided. If this takes place, the costs can be 100% d or pro rata depending on the vehicle's age and mileage.

## Previous damages

No apparent prior damage that had been repaired could be found on the vehicle.

## Comments

- Der Winterradsatz ist kein Bestandteil der Ausstattungsliste.



Figure 1: Diagonal front (left)



Figure 2: Diagonal front (right)



Figure 3: Diagonal rear (left)



Figure 4: Diagonal rear (right)



Figure 5: Interior - front



Figure 6: Interior - rear



Figure 7: Instrument cluster



Figure 8: Instrument panel



Figure 9: Interior 360° view



Figure 10: Cargo area

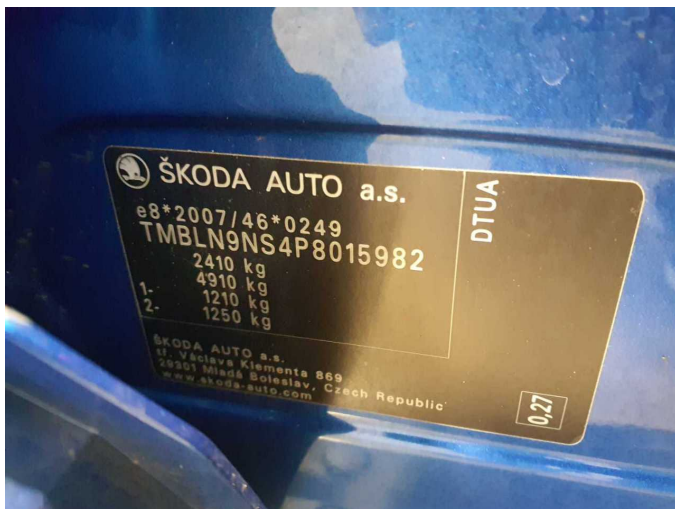


Figure 11: VIN



Figure 12: Mounted tyres



Figure 13: Documents



Figure 14: Documents



Figure 15: Additional tyres



Figure 16: Additional tyres



Figure 17: Navigation

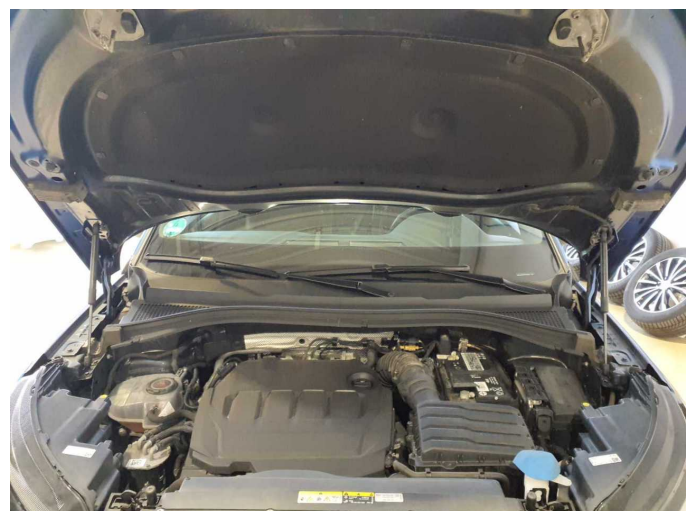


Figure 18: Misc.



Figure 19: Misc.



Figure 20: Misc.



Figure 21: Misc.



Figure 22: Misc.

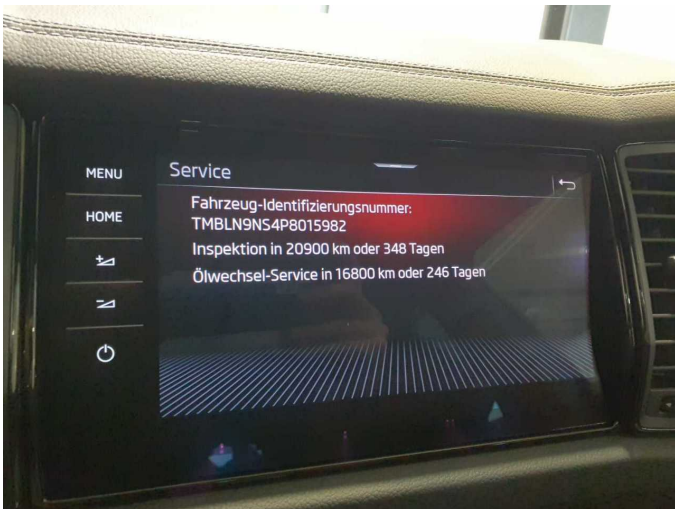


Figure 23: Misc.

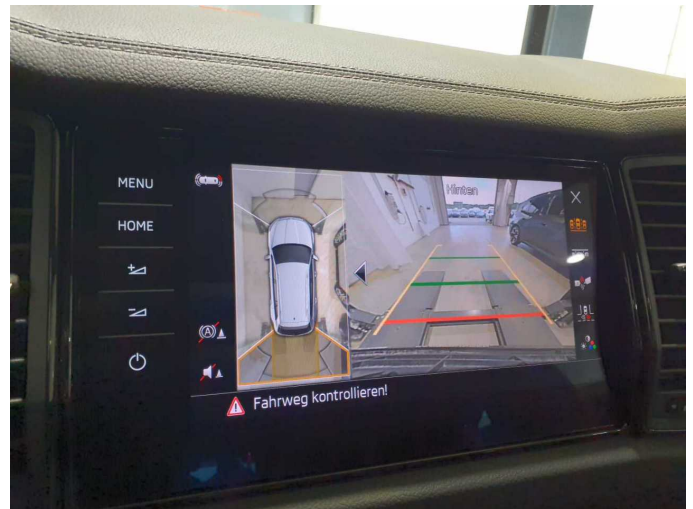


Figure 24: Misc.



Figure 25: Misc.



Damage 1: Rear bumper: Rear bumper (oben) - Scratch(es) - Smart repair



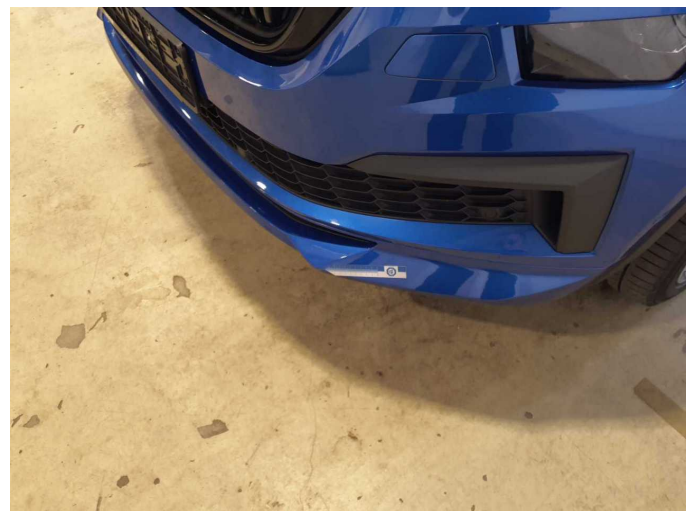
Damage 1: Rear bumper: Rear bumper (oben) - Scratch(es) - Smart repair



Damage 2: Boot lid / rear door: Boot lid - dent(s) - Smooth repair work



Damage 2: Boot lid / rear door: Boot lid - dent(s) - Smooth repair work



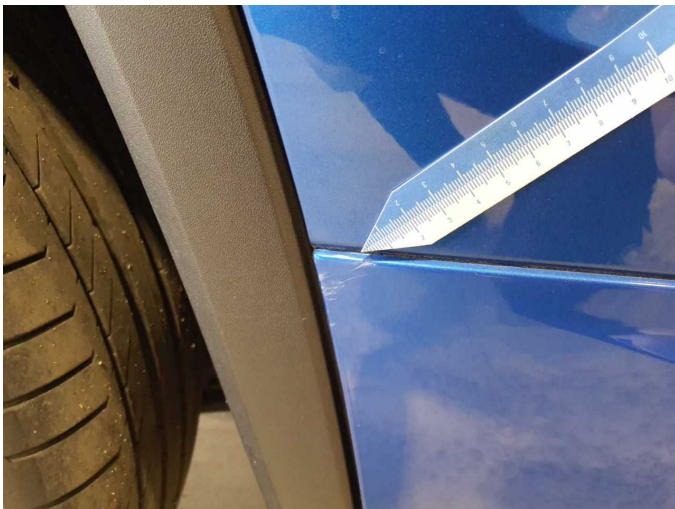
Damage 3: Front bumper: Front bumper - Scratched - Smart repair



**Damage 3:** Front bumper: Front bumper - Scratched - Smart repair



**Damage 4:** Door - rear right side: Brightware - lower - Scratched - Smart repair



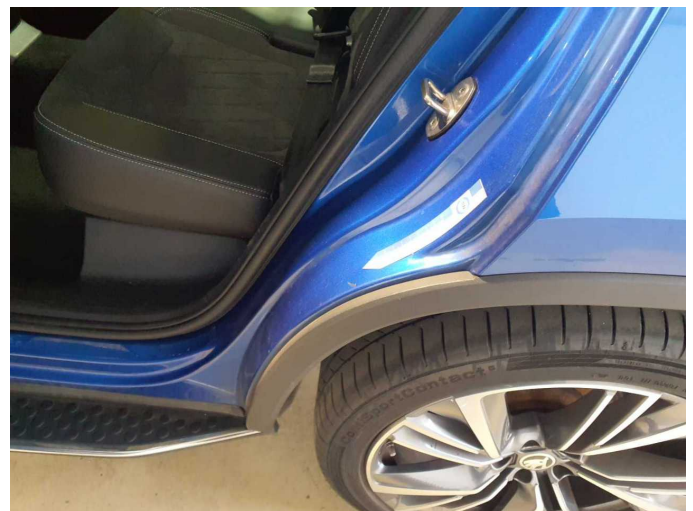
**Damage 4:** Door - rear right side: Brightware - lower - Scratched - Smart repair



**Damage 5:** Trim / covers: Boot lid - interior trim - Scratched - Replace



**Damage 5:** Trim / covers: Boot lid - interior trim - Scratched - Replace



**Damage 6:** Side panel - rear left side: Sill - Dent / paintcoat damage - Smart repair



**Damage 6:** Side panel - rear left side: Sill - Dent / paintcoat damage - Smart repair



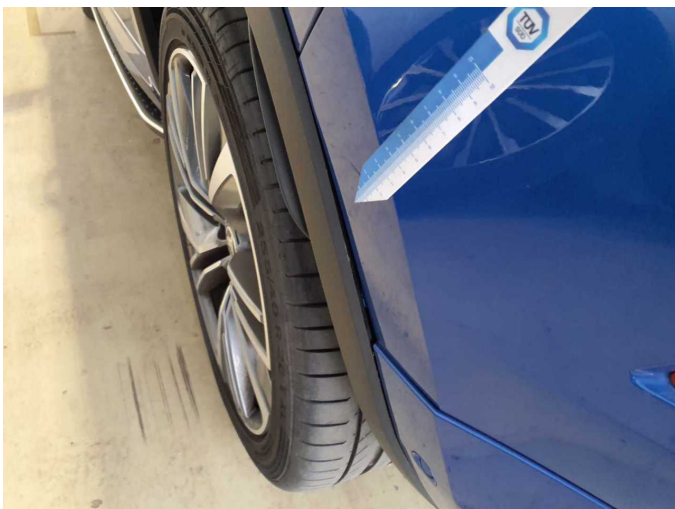
**Damage 7:** Rear bumper: Rear bumper - Scratched - Smart repair



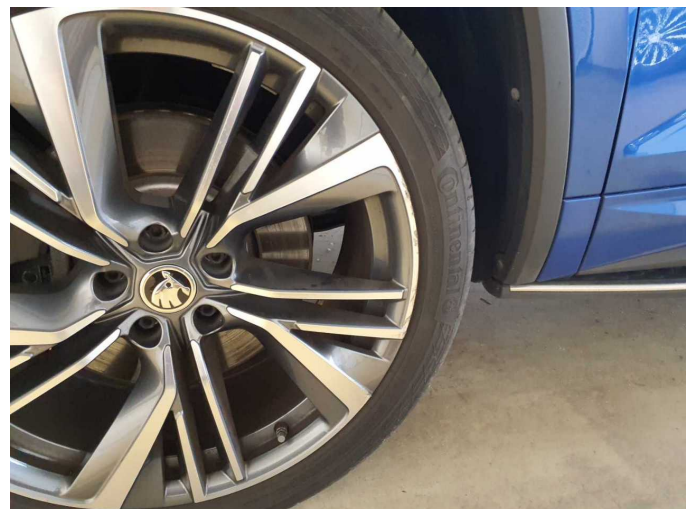
**Damage 7:** Rear bumper: Rear bumper - Scratched - Smart repair



**Damage 8:** Side panel - rear left side: Wheel well extension - Deformed - Replace



**Damage 8:** Side panel - rear left side: Wheel well extension - Deformed - Replace



**Damage 9:** Wheel / tyres: Alloy rim - front left side - Scratched - Loss in value



**Damage 9:** Wheel / tyres: Alloy rim - front left side - Scratched - Loss in value



**Damage 10:** Wheel / tyres: Alloy rim - rear right side - Scratched - Replace



**Damage 10:** Wheel / tyres: Alloy rim - rear right side - Scratched - Replace



**Damage 10:** Wheel / tyres: Alloy rim - rear right side - Scratched - Replace



**Damage 11:** Wheel / tyres: Alloy rim - front right side - Scratched - Replace



**Damage 11:** Wheel / tyres: Alloy rim - front right side - Scratched - Replace



**Damage 11:** Wheel / tyres: Alloy rim - front right side - Scratched - Replace



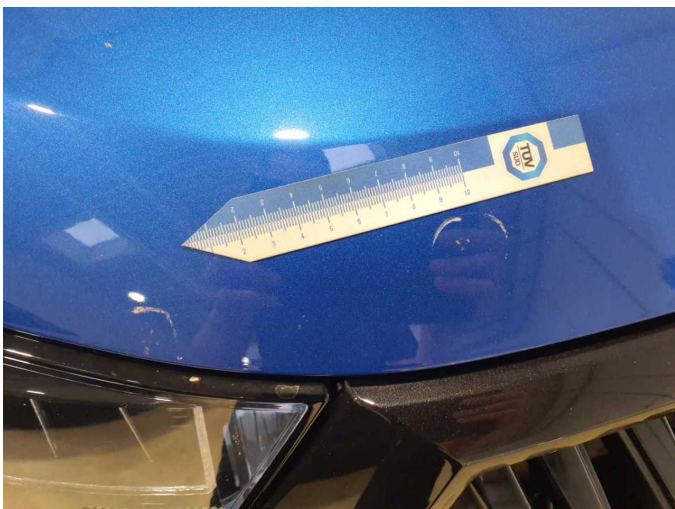
**Damage 12:** Bonnet: Bonnet - Dent / paintcoat damage - Repair and paint



**Damage 12:** Bonnet: Bonnet - Dent / paintcoat damage - Repair and paint



**Damage 12:** Bonnet: Bonnet - Dent / paintcoat damage - Repair and paint



**Damage 12:** Bonnet: Bonnet - Dent / paintcoat damage - Repair and paint



**Damage 13:** Vehicle glazing: Windscreen (Rissbildung) - Stone chips - Replace



**Damage 13:** Vehicle glazing: Windscreen (Rissbildung) - Stone chips - Replace



# Wartungshistorie

(gemäß Auftraggeber Informationen)

Fahrgestellnummer: TMBLN9NS4P8015982  
Hersteller / Modell: SKODA SKODA Kodiaq 2.0 TDI 4x4 DSG Sportline

Datum	KM-Stand	Beschreibung
26.05.2026	6.084	AU
03.06.2025	60.075	Bremse Sonstiges; Bremsklötze hinten; Bremsklötze vorne; Bremsscheiben + Klötze h; Bremsscheiben + Klötze v; Bremsscheiben hinten; Bremsscheiben vorne; Getriebeöl ern/prüfen; Motoröl b. Wartung; Ölfilter ern; Ölwechsel - Hinterachse; Regelwartungsdienst; Reparatur Sonstiges; Wartung Sonstiges
21.12.2023	29.784	Motoröl b. Wartung; Ölfilter ern; Regelwartungsdienst; Wartung Sonstiges