



HYUNDAI TUCSON: GE-065-WA

| | | | |
|-------------------------|--------------------------|-------------------------|--|
| Vinnnumber: | TMAJC81AGNJ163700 | Versionname: | HYUNDAI TUCSON 1.6 CRDI 136 DCT-7 HYBRID 48V BUSINESS VP [5P] bva 7-136CH-7cv (SUV) |
| First Registrationdate: | 23/02/2022 | Fiscalpower: | |
| Expertise Mileage: | 131360 | Power Kw: | 100 |
| Bodytype: | SUV | Body colour: | Black |
| Gearbox: | Automatic | Paint type: | Metalic |
| Transmission: | Front | Interior colour: | Black |
| Fueltype: | Hybrid | Type of rims (mounted): | Aluminium |
| Engine functioning: | Yes | Dashboard color: | Black |
| Battery functioning: | Yes | | |
| Vehicle running: | Yes | | |
| Number of doors: | 5 | | |
| Number of seats: | 5 | | |
| Number head rests: | 5 | | |
| Type of rims (mounted): | Aluminium | | |
| Category: | Passenger Car | | |

Options

| | | | |
|--------------------------------|------------------------------|----------------------------|---------------------|
| Number of keys total | 2 | Radio | |
| Number keys remote | 2 | Central consol F | |
| GPS big screen color | | Luggage cover | |
| GPS storage | | Headlights Xenon/LED/Laser | |
| GPS storage | HD | Front parking sensors | |
| Windows electric F | | Rear parking sensors | |
| Windows electric R | | Rear view camera | |
| Cruise Control | | Seat cover lining | Lining Other |
| Steering wheel multifunctional | | | |
| Steering wheel leather | | | |
| Type of climate control | Autom climate control | | |

Tyres

| | | | | |
|------------------------|-------|----------------------|-------|--------------------------|
| 215/65/17/103 V | | | | |
| Winter tyres: | Fr.L. | Michelin: 60% | Fr.R. | Michelin: 70% |
| | Re.L. | Michelin: 75% | Re.R. | Michelin: 80% |
| Tyre profile depth FL | | | | 4.2 |
| Tyre profile depth FR | | | | 3.8 |
| Tyre profile depth RL | | | | 3.2 |
| Tyre profile depth RR | | | | 3.1 |
| Tyre size FL | | | | 215/65 R 17 103 V |
| Tyre size FR | | | | 215/65 R 17 103 V |
| Tyre size RL | | | | 215/65 R 17 103 V |
| Tyre size RR | | | | 215/65 R 17 103 V |
| Tyre type FL | | | | Winter |
| Tyre type FR | | | | Winter |
| Tyre type RL | | | | Summer |
| Tyre type RR | | | | Summer |
| Tyre make FL | | | | 261 |
| Tyre make FR | | | | 261 |
| Tyre make RL | | | | 261 |
| Tyre make RR | | | | 261 |

Assistance equipment

Interior, Dirty, Cleaning



Centre console, Scratch(es), Replace



Glove compartment lid, Scratch(es), Repair/replace (lump sum)



Malfunction indicator, Blinking, Check



Tyre FL, Tear, Replace



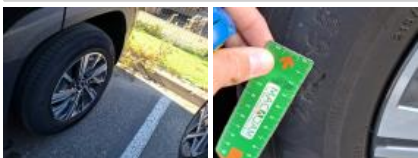
Alloy rim FL bitone/polychrome, Scratch(es), Acceptable



Alloy rim RL bitone/polychrome, Scratch(es), Acceptable



Tyre RL, Tear, Replace



Alloy rim RR bitone/polychrome, Scratch(es), Repair/replace (lump sum)



Tyre RR, Out of tolerance, Replace



Tyre FR, Tear, Replace



Alloy rim FR bitone/polychrome, Scratch(es), Repair/replace (lump sum)



Wing badge FL, Chemical pollution, Replace



Wing RL, Dent(s) and scratch(es), Repair and paint (complete)



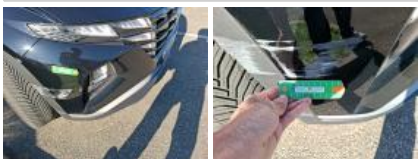
Door RL, Dent(s) and scratch(es), Repair and paint (complete)



Wing trim RL, Scratch(es), Acceptable



Bumper F, Scratch(es), Paint



Bumper moulding F, Scratch(es), Replace



Bonnet, Stone chip(s), Paint



Wing RR, Dent(s) and scratch(es), Acceptable



Door RR, Scratch(es), Paint



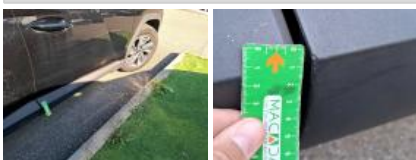
Wing FR, Dent(s) and scratch(es), Repair and paint (complete)



Wing trim FR, Scratch(es), Replace



Door trim FR, Scratch(es), Replace



Door FR, Dent(s), Repair and paint (complete)



Outside rear-view mirror housing R, Scratch(es), Acceptable



Rear bulkhead lining, Scratch(es), Acceptable



Internal boot lining L, Scratch(es), Replace



Internal boot lining R, Scratch(es), Replace



Tailgate / Boot, Dent(s) and scratch(es), Repair and paint (complete)



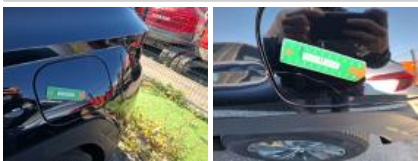
Bumper R, Scratch(es), Repair and paint (complete)



Bumper corner RL, Scratch(es), Polish



Fuel cap cover, Scratch(es), Acceptable



Historique Maintenance

Immatriculation: **GE-065-WA**

Date de 1ère immatriculation: **23/02/2022**

Modèle: **Hyundai TUCSON 1.6 CRDI 136 DCT-7 HYBRID 48V BUSINESS VP [5P] bva 7-136CH-7cv (SUV)**

| Date | Kilométrage | Fournisseur | Descriptif |
|------------|-------------|--------------------|--------------------------------------|
| 09/07/2025 | 112.390 | CENTRAL MOTOR LYON | DISQUES PLAQUETTES AR RPLT |
| | 0 | | REVISION ET CLIM ET AIR ET CARBURANT |
| | 0 | | LIQUIDE DE FREIN |
| | 0 | | BALAIS ESSUIE GLACE AV AR |
| 22/05/2024 | 81.941 | CENTRAL MOTOR LYON | REVISION |
| | 0 | | DIVERS FREIN |
| 10/08/2023 | 56.208 | ACT AUTOMOBILES | REVISION ET CLIM ET AIR ET CARBURANT |
| | 0 | | LIQUIDE DE FREIN |