

2-DKL-524

2-DKL-524 · ST-line 125pk 92kw mHEV M6 Clipper · 30 June 2026 · Zaventem (BE)

Specifications

License Plate Number	2-DKL-524	Fuel Type	Hybrid Gasoline
Manufacturer	FORD	VIN	WF0PXXGCHPPD61941
Model	Focus	Cylinder Capacity	999 ^{cm³}
Model Versions	ST-line 125pk 92kw mHEV M6 Clipper	Transmission Type	Handmatig geschakelde transmissie
Body Type	5 door hatchback	First Admission	06-04-2023
Color	Grey	Odometer	98.442 ^{km}
Paint Type	Metallic	Numer Of Keys	2
Production Year	2023	Interior	Black
KW	92	Number Headrests	5

Images





Accessories

ABS

Airbags

Alloy wheels

Audio System

Automatic air conditioning

Bluetooth car kit

Central door locking

Centre armrest

Cruise control

Electric rear windows

Electric windows front

Electrically adjustable exterior mirrors

Front & rear parking sensors

Leather steering wheel

Navigation system

Roller cover / parcel shelf

Seat heating

Steering wheel multifunction

Steeringwheel - Heated

Windscreen - Heated

Condition

Condition exterior Adequate

Condition interior Adequate

Last Maintenance Unknown

Previous Repairs

Unknown

Tire Specifications

Tire	Profile	Brand	Width	Aspect Ratio	Radial	Type
Front Left	3 ^{mm}	Westlake	215 ^{mm}	50 ^{mm}	17 ^{inch}	All Season
Rear Left	5 ^{mm}	Westlake	215 ^{mm}	50 ^{mm}	17 ^{inch}	All Season
Front Right	3 ^{mm}	Westlake	215 ^{mm}	50 ^{mm}	17 ^{inch}	All Season
Rear Right	5 ^{mm}	Westlake	215 ^{mm}	50 ^{mm}	17 ^{inch}	All Season
Spare Tire Type	Compressor					

Damages



Damage Part

Fender - Rear Left

Damage Type

Small dent(s)

Repair Type

Restyle

Acceptable

No



Damage Part

Reardoor - Left

Damage Type

small dents / small scratches

Repair Type

Restyle / Touch-up

Acceptable

No



Damage Part

Hood

Damage Type

Dent(s) & Scratch(es)

Repair Type

Panelbeating & Spray

Acceptable

No



Damage Part

Mirror - Rightside

Damage Type

Small scratch(es)

Repair Type

Spray

Acceptable

No



Damage Part

Alloy - Right Front

Damage Type

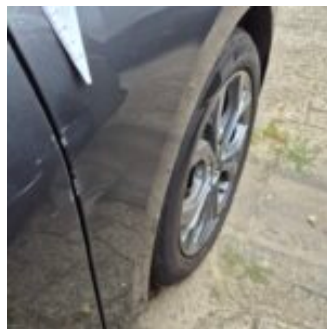
Damaged

Repair Type

Rim repair

Acceptable

No



Damage Part

Fender - Front Right

Damage Type

small dents / small scratches

Repair Type

Panelbeating & Spray

Acceptable

No



Damage Part

Frontdoor - Right

Damage Type

Door-edge chipped

Repair Type

Panelbeating & Spray

Acceptable

No



Damage Part

Reardoor - Right

Damage Type

Scratch(es)

Repair Type

Polish

Acceptable

No



Damage Part

Fender - Rear Right

Damage Type

Small scratch(es)

Repair Type

Touch-up / Polish

Acceptable

No



Damage Part

Damage Type

Repair Type

Acceptable

Tailgate

Scratch(es)

Spray

No



Damage Part

Damage Type

Repair Type

Acceptable

Bumper - Rear

Scratch(es)

Spray

No



Damage Part

Damage Type

Repair Type

Acceptable

Interior

Stains & dirt

Cleaning

No