

Expertise

Protocol number: 46266333
Order No. / Reference: 26550343
Inspection date: 29 Jun 2026

Manufacturer: Peugeot

Model: 508 SW Hybrid e-EAT8 GT

VIN: VR3F4DGZTNY631577



Vehicle details

Manufacturer / Type / Model / Equipment

Peugeot 508 SW Hybrid e-EAT8 GT

Vehicle Identification number VR3F4DGZTNY631577

Mileage (Read) 107,131 km

First registration 22 Dec 2022

Number of holders 1

Power / Engine displacement 133 kw / 1,598 ccm

Fuel type / Cylinder Hybr.B/E ext.auf / 4

Gearbox / Number of gears Automatic / 8

Type of drive Front drive

Type of vehicle Station wagon

Colour / colour code TYPE HABILLAGE
EXTERIEUR
METALLISEE VERNIS

Doors / Seats 5 / 5

Upholstery type Cloth / leather
combination

Colour of upholstery Black-Anthracite



Vehicle details

Maintenance booklet / proof	Non-existent	Next maintenance in	13,900 km
Last service on / at	12/2025 at 91,096 km		
Key is / should be	2 / 2	FZG documents	ZB#2 (B) was available (copy), ZB#1 (S) was not available.
		Letter No.	GC923017
Previous damage / Accident	Detectable	Repainting	None detectable
Inspection conditions	sufficient	Lifting equipment / pit	No
Test drive	Not performed	Engine function test	Performed
Manufacturer key number/ type code number	1889 / ADY 00019		
Emission standard	EURO6;WLTP;AP;PI/CI; M, N1 I	fine dust sticker	
Permitted total weight	2,290 kg	Empty weight	

Tyres

Mounted tyres

#	Tyre size	Type of tyre	Manufacturer	Tread depth
1)	235/45 R18 98Y	Summer tyres on Light alloy	Pirelli	4mm / 4mm
2)	235/45 R18 98Y	Summer tyres on Light alloy	Pirelli	6mm / 6mm

Additional tyres

#	Tyre size	Type of tyre	Manufacturer	Tread depth
1)	215/55 R17 98V	Winter tyres on Light alloy	Pirelli	6mm / 6mm
2)	215/55 R17 98V	Winter tyres on Light alloy	Pirelli	7mm / 7mm

Replacement

Typ	Tyre size	Type of tyre	Manufacturer	Tread depth
	Tirefit	Expiration date 06/2029		

Legend: Tread depth information for the left tire is listed first, for the right tire it is listed second on the axle in the direction of travel.

TÜV SÜD Auto Partner GmbH
Wiesenring 2
04159 Leipzig

Inspection location
Hartmann Fleet Professionals GmbH
Leerenstraße 25
29683 Bad Fallingbommel



Equipment



Standard equipment

- ABS (Anti-lock Braking System)
- Airbag for driver and front passenger (passenger airbag can be deactivated)
- Active Blind Spot Assist
- Electrically adjustable, heated and folding exterior mirrors (with LED approach lighting - integrated LED turn signals)
- Illuminated glove compartment
- Turn signals with lane change indicator function
- third brake light
- Roof rails in high-gloss black
- Digital instrument cluster with high-resolution 12.3" screen, adjustable and customizable
- EBV (Electronic Brakeforce Distribution)
- Front parking aid, acoustic and visual
- Electric front and rear windows (with comfort operation and anti-pinch protection)
- electric parking brake
- Front collision warning
- front and rear floor mats
- luggage compartment roller blind
- Cup holder in the center console
- Heated rear window
- Rear window and side windows in the second row are more heavily tinted.
- rear window wiper
- Rear apron with diffuser look in black
- Interior mirror automatically dimming
- Frameless interior mirror
- Map pockets on the front seatbacks
- Manual child lock
- Height-adjustable headrests
- Radiator grille in racing flag pattern in "Dark Chrome" (with high-gloss black surround)
- LED ambient lighting in the front footwell
- Blue LED ambient lighting on the dashboard (under the center console and the cup holder)
- LED daytime running lights
- "Spereone" 18" alloy wheels, two-tone (with 235/45 R 18 98Y tires)
- light sensor
- Rear center armrest with pass-through flap
- Multifunctional touchscreen (capacitive screen, 7 toggle switches, access to key functions such as radio, air conditioning, navigation system, vehicle settings, telephone and connectivity)
- Fatigue warning
- Navigation system: 3D navigation system NAC (real-time navigation by TomTom Services - 3D navigation including 3D display of buildings and monuments - voice recognition for navigation, telephone and media - operation via touchscreen - PEUGEOT Connect Box - map transfer to the digital instrument cluster - 2 USB ports (Type A))
- Active Safety Brake Plus
- Airbag: Side airbag (for driver and front passenger)
- Airbag: Curtain airbags front and rear
- Adaptive Cruise Control (ACC) with Stop & Go function (including lane positioning assistant)
- Exterior mirrors in Perla Nera Black
- Hill start assist
- On-board computer
- Black headliner
- Decorative inserts in carbon look (for door panels and dashboard)
- Dual exhaust with chrome-plated tailpipes
- Rear parking aid, acoustic and visual
- Electronic Stability Program (ESP) (with ASR (traction control))
- High beam assist
- Follow-me-home function (automatic)
- Full LED headlights with headlight range control (LED taillights - LED turn signals with static cornering lights)
- Transmission: 8-speed automatic transmission EAT8
- Seat belts: 3-point seat belts in all seats (height-adjustable three-point seat belts with belt locks - pyrotechnic belt tensioners and electrically controlled belt force limiters - safety-optimized front headrests - warning light and warning signal for unfastened or unfastened seat belts for driver, front passenger and rear passengers - rear seats: 3 three-point seat belts - belt force limiters on the side seats - Isofix child seat anchors on the outer seats)
- Keyless system (keyless access and start system)
- Automatic climate control (2 zones) (separately adjustable for driver and front passenger)
- Paintwork: Special paintwork Dark Blue
- Charging cable: Mode 2 charging cable (Type 2, up to 2.3 kW), 6 meters long
- Blue LED ambient lighting on the front door panels
- LED ceiling lighting at the front (2 reading lights at the front and rear)
- Steering wheel: Small multifunction leather steering wheel, flattened at the top and bottom.
- Makeup mirror (illuminated for driver and front passenger)
- Front center armrests with illuminated storage compartment
- Multimedia: Mirror Screen (Transfer of multimedia content and apps from a compatible smartphone to the vehicle's touchscreen, allowing direct control of compatible functions and apps - CarPlay (for compatible Apple iPhone models) - Android Auto (for compatible smartphone models with Android operating system))
- Emergency brake assist (with automatic activation of the hazard warning lights)
- On-board charger 3.7 kW, 1-phase
- Particle filter: OPF (Otto particulate filter)
- Aluminum pedals and stainless steel door sills
- Upholstery: Decorative copper stitching on the dashboard
- Radio accessories: 2 USB ports (Type A) in row 2
- Radio accessories: Digital radio reception DAB+



- Break warning
- Upholstery: Fabric/faux leather
- Radio: Audio (Bi-tuner - 8 speakers (midrange and tweeters) - MP3-compatible - Bluetooth hands-free system with audio streaming via Bluetooth - USB port (Type A) - AUX input - Steering wheel controls and touchscreen operation)
- Wheels: Tire repair kit (compressor + tire sealant spray)
- paddle shifters on the steering wheel
- Seats: Passenger seat height adjustable
- Seats: Driver's seat height adjustable
- Seats: Rear bench seat and backrest 40/60 split folding (Magic Flat System with control element in the boot)
- Lane keeping assist with steering intervention
- Technical features: Plug-in hybrid version (Acoustic pedestrian warning system (AVAS), pressure tank system including switch for opening the fuel filler flap, selectable driving modes: Electric/Hybrid/Sport, preconditioning function, HYBRID logo on the fenders and tailgate, functions (Brake) and (e-Save) for energy recovery when releasing the accelerator pedal and for preserving purely electric range (10 km, 20 km or the full charging capacity))
- Central locking activated from inside with remote control (doors lock automatically when driving off)

Extra equipment

- Mechanically swiveling towbar with ball head
- Chassis: Active Suspension Control (adaptive chassis control)
- Paint finish: Special metallic paint
- Radio accessories: FOCAL sound system

- Rain sensor
- Tire pressure monitoring system
- Wheels: Anti-theft wheel bolts
- Reversing camera with 180° surround view
- Electric power steering
- Seats: Ergonomic comfort seats with AGR seal of approval (extendable thigh support - electric lumbar support - electric seat tilt adjustment)
- Sport mode (to activate the following functions: - Display of driving dynamics parameters on the instrument cluster - More responsive accelerator pedal response - More responsive power steering - Increased engine noise)
- Glazing: Laminated glass windshield, noise-reducing
- Traffic sign recognition (with display of the speed recommendation in the instrument cluster (additional recognition of stop signs, one-way street signs and the beginning and end of no-overtaking zones))
- Immobiliser
- Decorative trim in high-gloss black on the side windows

- Decorative inlays made of real wood "Zebrano"
- Guide rails in the trunk
- tailgate sensor-controlled
- Panoramic tilt/slide sunroof with manual blind
- Seats: Heated front seats (GT)

Brief expert findings

Documents submitted	At the time of the inspection, the vehicle registration certificate Part 2 (title) was available, but the vehicle registration certificate Part 1 (document) was not. (Copy)
VIN comparison	The vehicle identification number (VIN) was read from the vehicle and its conformity with the submitted documents was confirmed by the undersigned during the inspection.
Inspection	The inspection conditions were sufficient for the assessment of the vehicle. No lifting equipment or pit was available for inspecting the vehicle. Therefore, inspection of the vehicle's underside was only possible to a limited extent.
Test drive	No test drive/shunting maneuver was carried out during the inspection of the vehicle.
Engine function test	An engine test run was performed.



Value reducing factors

No.	Component group	Description
1	Misc.	Main inspection - No evidence - No deduction
2	Side panel - rear right side	Side panel - dent(s) - Smooth repair work
3	Body	C-pillar - right side - Scratch(es) - Smart repair
4	Side panel - rear left side	Sill - Scratch(es) - Smart repair
5	Side panel - rear left side	Side panel - Dent / paintcoat damage - Smart repair
6	Wheel / tyres	Alloy rim - rear left side - Scratch(es) - Loss in value
7	Wheel / tyres	Alloy rim - front right side - Scratch(es) - Loss in value
8	Bonnet	Bonnet - Dent / paintcoat damage - Repair and paint
9	Rear bumper	Rear bumper - Scratch(es) - Paint
10	Door - front left side	Door - Dent / paintcoat damage - Repair and paint
11	Door - front right side	Door - Dent / paintcoat damage - Repair and paint
12	Front bumper	Front bumper - Scratch(es) - Paint

Wear and tear

No.	Component group	Description
1	Vehicle glazing	Windscreen - Stone chips - No deduction

The vehicle shows signs of wear and tear commensurate with its age and use.

Previous damages

No.	Previous damage	Extent of damage (Net)
1	Side right, Provided by user / customer, from 8 Nov 2023	1.918,78 €
2	Front, Side right, Provided by user / customer, from 15 Dec 2023	5.950,59 €

Order/Scope of Order

An order was placed to prepare a sales report for the described vehicle. This report includes the following:

- Description of key vehicle information
- Documentation of equipment features
(*Delivery by third-party service providers*)
- Documentation of damage, defects, missing parts
- Documentation of prior damage, unrepaired prior damage, repainting
- A brief visual or functional inspection of the equipment details, if possible.
(*Functional testing of driver assistance systems is not included in the scope of services!*)
- a photographic documentation of the vehicle



Basis for the order

This product is based on the guidelines for vehicle returns and valuations published by Alphabet Fleet GmbH. The expert makes the specific findings in each individual case objectively, within the framework of the prescribed standards, based on their own expertise.

The vehicle inspection takes place in a fully assembled, unassembled state.

Damage or defects that can only be detected during disassembly/diagnostic work or through further investigation remain within the realm of prognostic risk. An increased risk exists due to concealed defects caused by fraudulent misrepresentation and which were not identifiable by the expert.

Damage or defects resulting from normal use or wear and tear of the vehicle will be accepted in accordance with the applicable standard.

There was no explicit identification or monetary consideration of the expected features within the product.

Features which, in their nature and extent, slightly exceed normal use but do not constitute unacceptable damage, will be documented and indicated as signs of wear, if applicable.

Damage or defects that, according to the applicable standard, can no longer be attributed to normal use or wear and tear are listed under "Value Reducing Factors" in the product description.

Depending on the product specification, a monetary ID can be provided. If this takes place, the costs can be 100% d or pro rata depending on the vehicle's age and mileage.

Previous damages

According to available information previous damages were repaired at the vehicle. Traces of repairs, which allow conclusions about the area of repair, were not recognizable during the inspection.



Figure 1: Diagonal front (left)



Figure 2: Diagonal front (right)



Figure 3: Diagonal rear (left)



Figure 4: Diagonal rear (right)



Figure 5: Interior - front



Figure 6: Interior - rear



Figure 7: Instrument cluster



Figure 8: Instrument panel



Figure 9: Interior 360° view



Figure 10: Cargo area



Figure 11: VIN



Figure 12: Mounted tyres



Figure 13: Documents



Figure 14: Additional tyres



Figure 15: Navigation

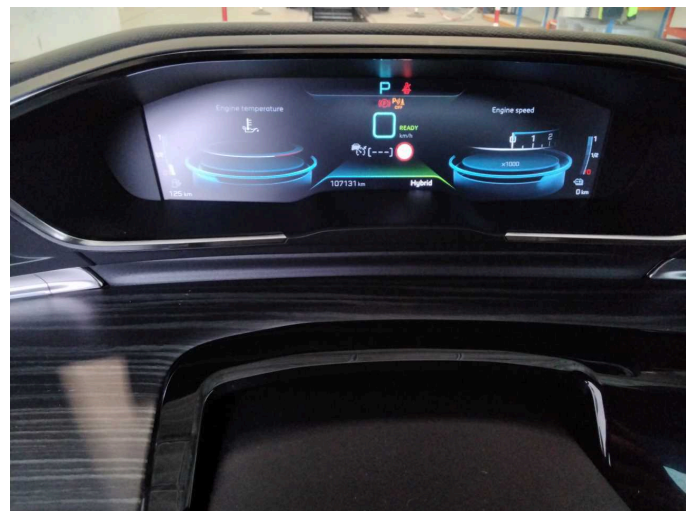


Figure 16: Misc.

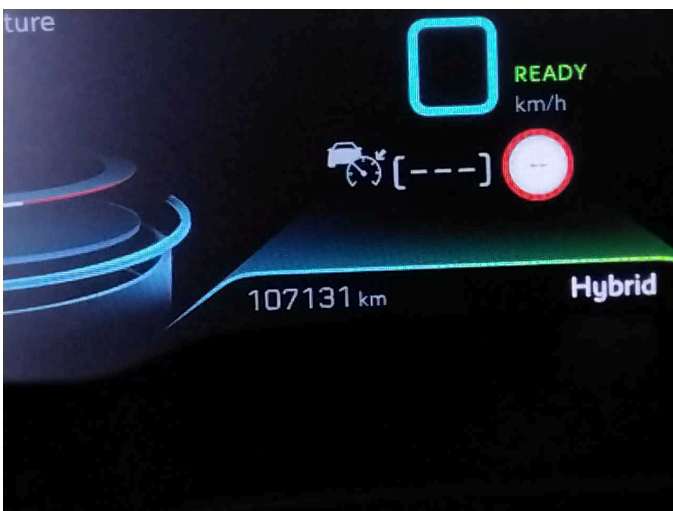


Figure 17: Misc.

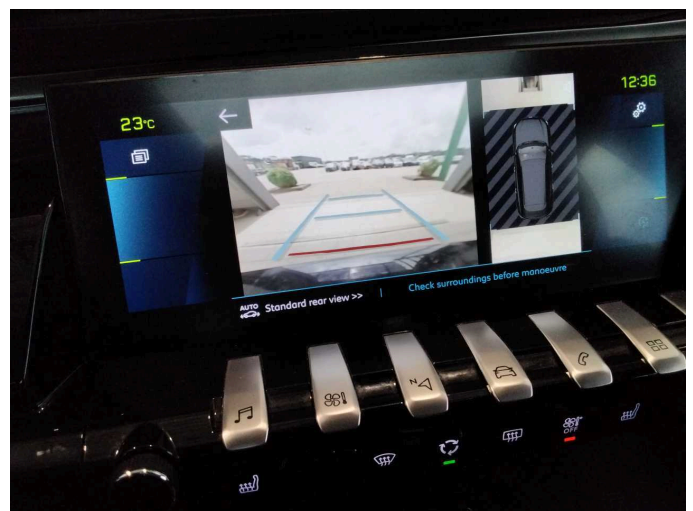


Figure 18: Misc.



Figure 19: Misc.



Figure 20: Misc.



Figure 21: Misc.

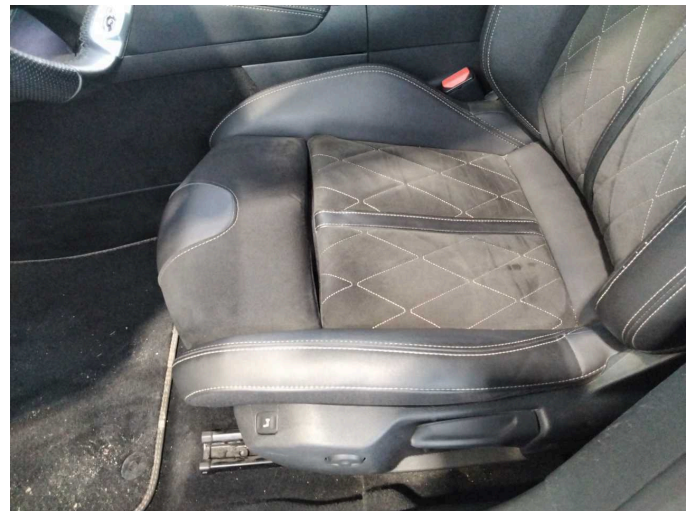


Figure 22: Misc.



Figure 23: Misc.



Figure 24: Misc.



Figure 25: Misc.



Figure 26: Misc.

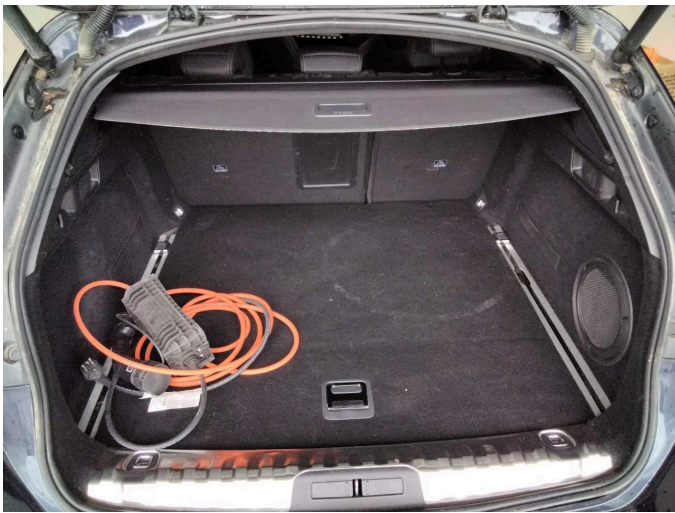
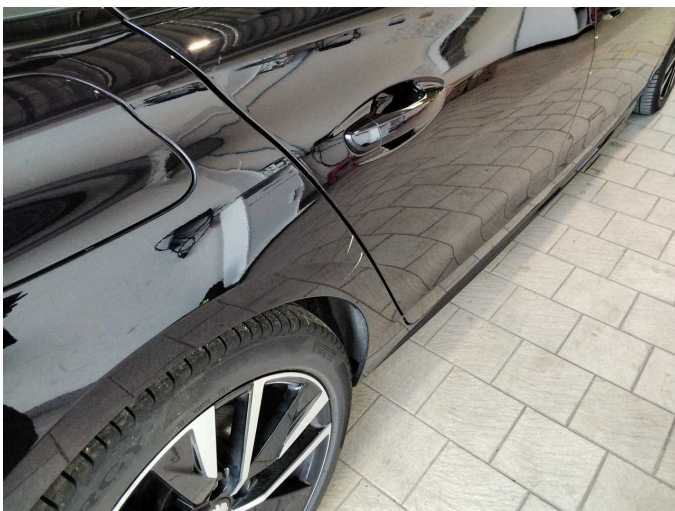


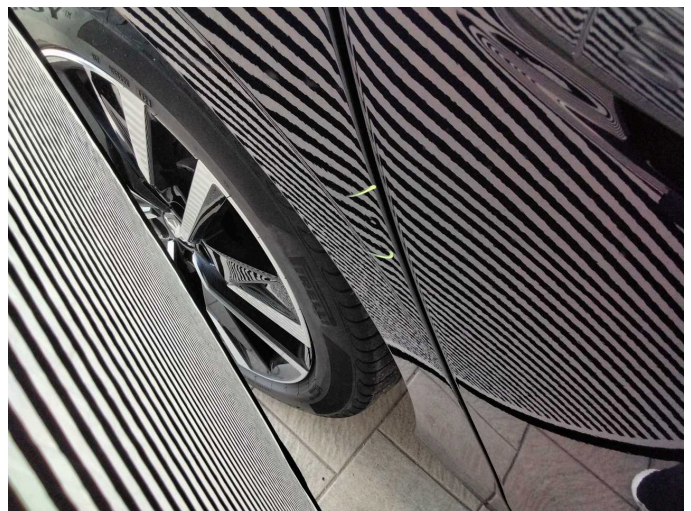
Figure 27: Misc.



Figure 28: Misc.



Damage 2: Side panel - rear right side: Side panel - dent(s) - Smooth repair work



Damage 2: Side panel - rear right side: Side panel - dent(s) - Smooth repair work



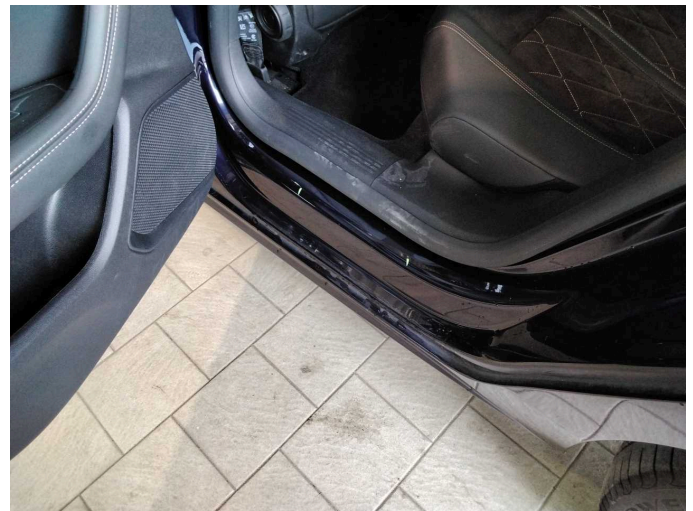
Damage 3: Body: C-pillar - right side - Scratch(es) - Smart repair



Damage 3: Body: C-pillar - right side - Scratch(es) - Smart repair



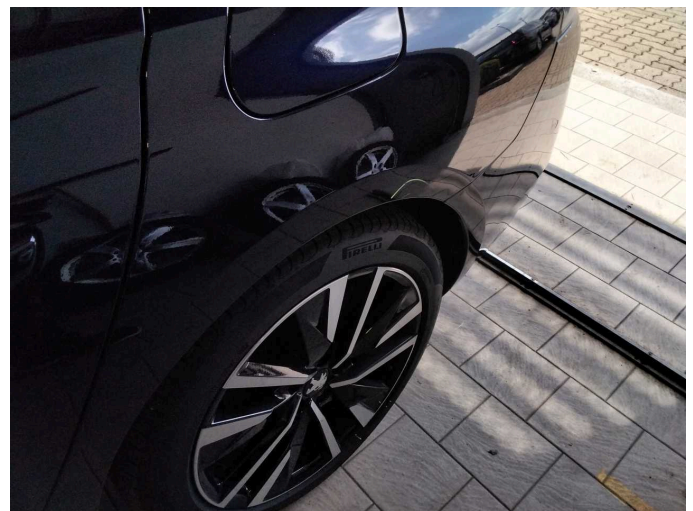
Damage 3: Body: C-pillar - right side - Scratch(es) - Smart repair



Damage 4: Side panel - rear left side: Sill - Scratch(es) - Smart repair



Damage 4: Side panel - rear left side: Sill - Scratch(es) - Smart repair



Damage 5: Side panel - rear left side: Side panel - Dent / paintcoat damage - Smart repair



Damage 5: Side panel - rear left side: Side panel - Dent / paintcoat damage - Smart repair



Damage 5: Side panel - rear left side: Side panel - Dent / paintcoat damage - Smart repair



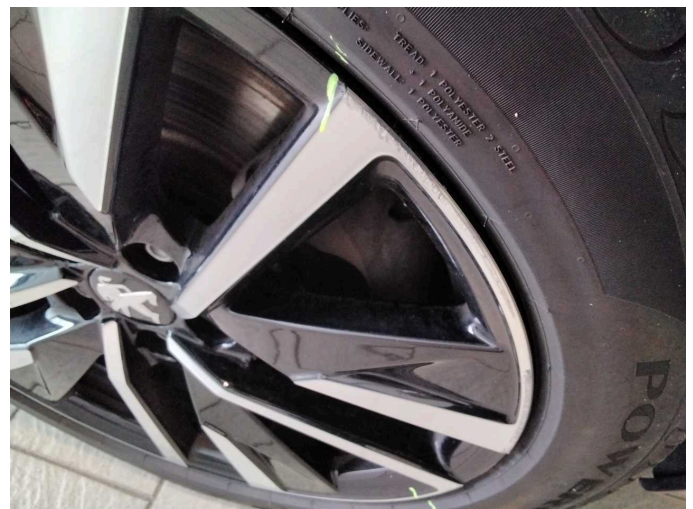
Damage 6: Wheel / tyres: Alloy rim - rear left side - Scratch(es) - Loss in value



Damage 6: Wheel / tyres: Alloy rim - rear left side - Scratch(es) - Loss in value



Damage 7: Wheel / tyres: Alloy rim - front right side - Scratch(es) - Loss in value



Damage 7: Wheel / tyres: Alloy rim - front right side - Scratch(es) - Loss in value



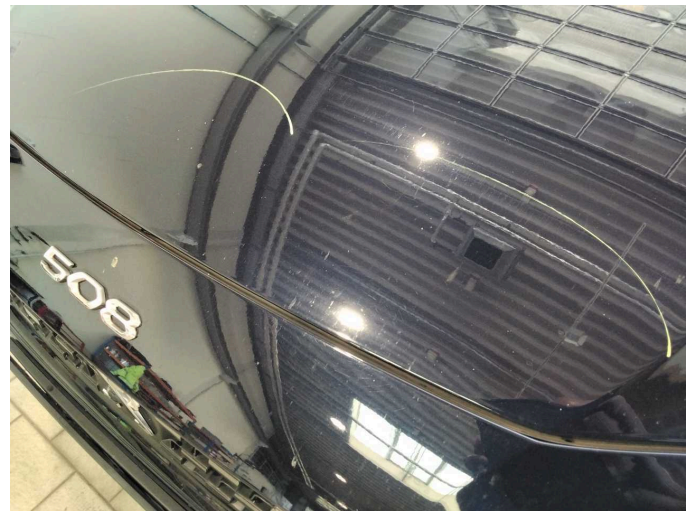
Damage 7: Wheel / tyres: Alloy rim - front right side - Scratch(es) - Loss in value



Damage 7: Wheel / tyres: Alloy rim - front right side - Scratch(es) - Loss in value



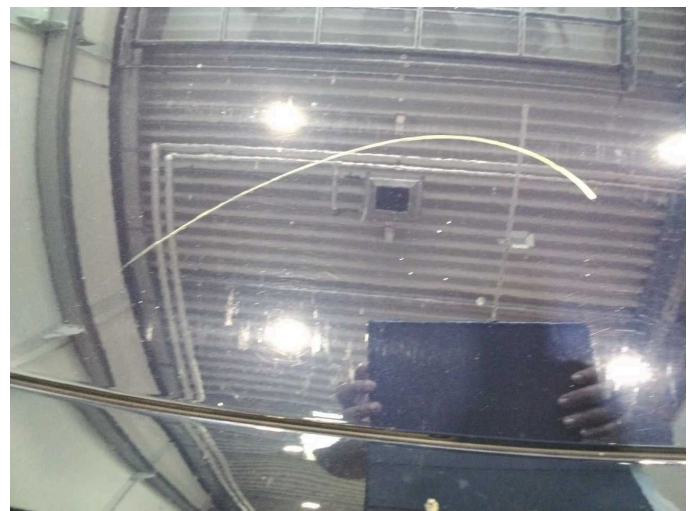
Damage 8: Bonnet: Bonnet - Dent / paintcoat damage - Repair and paint



Damage 8: Bonnet: Bonnet - Dent / paintcoat damage - Repair and paint



Damage 8: Bonnet: Bonnet - Dent / paintcoat damage - Repair and paint



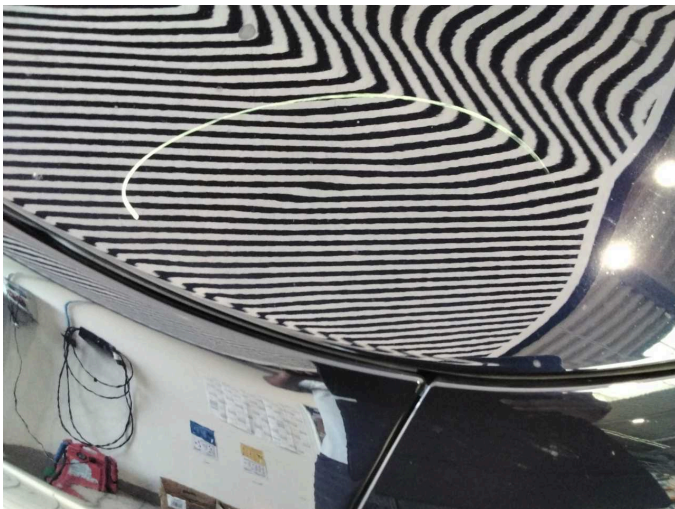
Damage 8: Bonnet: Bonnet - Dent / paintcoat damage - Repair and paint



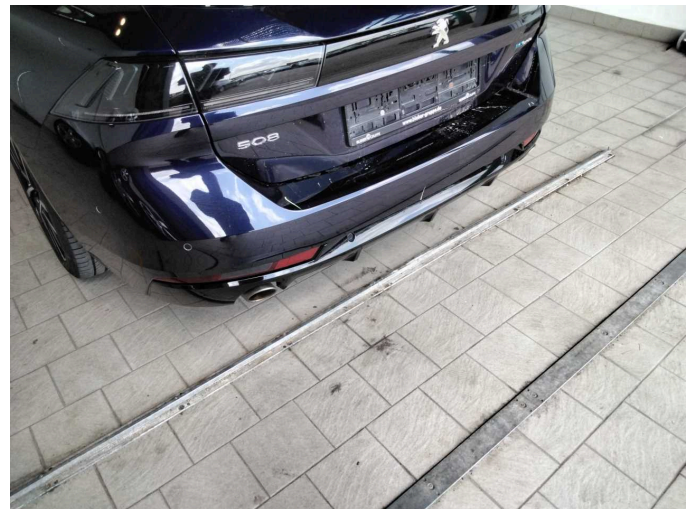
Damage 8: Bonnet: Bonnet - Dent / paintcoat damage - Repair and paint



Damage 8: Bonnet: Bonnet - Dent / paintcoat damage - Repair and paint



Damage 8: Bonnet: Bonnet - Dent / paintcoat damage - Repair and paint



Damage 9: Rear bumper: Rear bumper - Scratch(es) - Paint



Damage 9: Rear bumper: Rear bumper - Scratch(es) - Paint



Damage 9: Rear bumper: Rear bumper - Scratch(es) - Paint



Damage 9: Rear bumper: Rear bumper - Scratch(es) - Paint



Damage 9: Rear bumper: Rear bumper - Scratch(es) - Paint



Damage 9: Rear bumper: Rear bumper - Scratch(es) - Paint



Damage 10: Door - front left side: Door - Dent / paintcoat damage - Repair and paint



Damage 10: Door - front left side: Door - Dent / paintcoat damage - Repair and paint



Damage 10: Door - front left side: Door - Dent / paintcoat damage - Repair and paint



Damage 10: Door - front left side: Door - Dent / paintcoat damage - Repair and paint



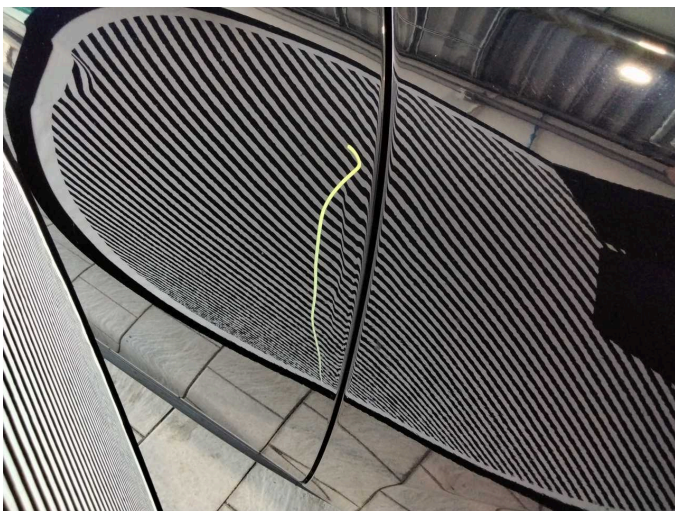
Damage 11: Door - front right side: Door - Dent / paintcoat damage - Repair and paint



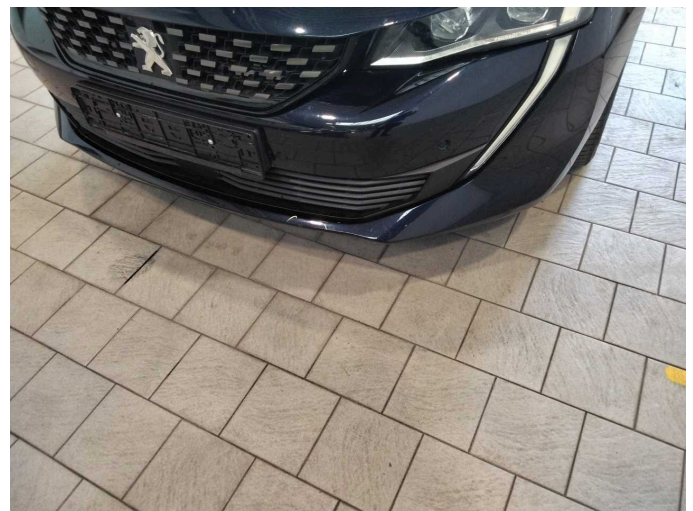
Damage 11: Door - front right side: Door - Dent / paintcoat damage - Repair and paint



Damage 11: Door - front right side: Door - Dent / paintcoat damage - Repair and paint



Damage 11: Door - front right side: Door - Dent / paintcoat damage - Repair and paint



Damage 12: Front bumper: Front bumper - Scratch(es) - Paint



Damage 12: Front bumper: Front bumper - Scratch(es) - Paint



Damage 12: Front bumper: Front bumper - Scratch(es) - Paint



Damage 12: Front bumper: Front bumper - Scratch(es) - Paint



Wear and tear 1: Vehicle glazing: Windscreen - Stone chips - No deduction