

Expertise

Protocol number: 46118522
Order No. / Reference: 26527973
Inspection date: 23 Jun 2026

Manufacturer: Polestar

Model: 2 Dual Motor 78kWh

VIN: YSMVSEDE8PL156478



Vehicle details

Manufacturer / Type / Model / Equipment

Polestar 2 Dual Motor 78kWh

Vehicle Identification number YSMVSEDE8PL156478

Mileage (Read) 73,544 km

First registration 11 Apr 2023

Number of holders 1

Next periodical technical inspection 04/2026
(Report not on hand)

Power / Engine displacement 160 kw / 0 ccm

Fuel type / Cylinder Electric / 0

Gearbox / Number of gears Direct drive / 1

Type of drive All-wheel drive

Type of vehicle Saloon car

Colour / colour code Snow Metallic

Doors / Seats 5 / 5

Upholstery type Cloth

Colour of upholstery Anthracite-Black



Vehicle details			
Maintenance booklet / proof	digital proof / complete	Next maintenance in	554 Tag(e)
Last service on / at	01/2026 at 64,020 km		
Key is / should be	2 / 2	FZG documents	ZB#2 (B) was available (copy), ZB#1 (S) was not available.
		Letter No.	GQ221267
Previous damage / Accident	None detectable	Repainting	None detectable
Inspection conditions	sufficient	Lifting equipment / pit	yes
Test drive	Not performed	Engine function test	Performed
Manufacturer key number/ type code number	2219 / AAA 00007		
Emission standard	2017/1151;WLTP;reine Elektrofz	fine dust sticker	
Permitted total weight	2,600 kg	Empty weight	

Tyres

Mounted tyres				
#	Tyre size	Type of tyre	Manufacturer	Tread depth
1)	245/45 R19 102V	Summer tyres on Light alloy	Michelin	5mm / 5mm
2)	245/45 R19 102V	Summer tyres on Light alloy	Michelin	5mm / 5mm
Additional tyres				
#	Tyre size	Type of tyre	Manufacturer	Tread depth
1)	245/45 R19 102V	Winter tyres on Light alloy	Dunlop	5mm / 5mm
2)	245/45 R19 102V	Winter tyres on Light alloy	Dunlop	5mm / 5mm
Replacement				
Typ	Tyre size	Type of tyre	Manufacturer	Tread depth
	Tirefit	Expiration date 01/2027		

Legend: Tread depth information for the left tire is listed first, for the right tire it is listed second on the axle in the direction of travel.

TÜV SÜD Auto Partner GmbH
Wiesenring 2
04159 Leipzig

Inspection location
Hartmann Fleet Professionals GmbH
Industriestraße 11
36272 Niederaula



Equipment



Standard equipment

- 2 USB ports on the back
- Acoustic Vehicle Alert System - AVAS
- Airbags: Head/shoulder airbags
- Airbags: SIPS side airbags (including inner side)
- Armrest with cup holder and storage compartment
- Automatic braking after a collision
- Frameless, electrically adjustable exterior mirrors (automatically dimming exterior mirrors)
- third brake light
- Connected Safety (Connected Safety transmits information between your vehicle and other vehicles via the internet. This function can inform the driver if another vehicle on the current route has activated its hazard warning lights or has detected slippery road conditions. Connected Safety communication only works between vehicles equipped with this function and in which it is activated.)
- Front storage compartment 41 liters
- Transmission: Direct drive
- Back window, heater
- Infotainment powered by Android (incl. Google Assistant, Google Maps, Google Play Store -Google service connectivity -Over-the-air (OTA) updates for life)
- Electric child safety lock
- ECC 2-zone air conditioning
- Front and rear headrests
- Charging cable (6 meters) (16A 11kW - Type 2, Mode 3)
- LED headlights, adaptive (Thor's Hammer daytime running lights)
- Automatic headlight range control
- Navigation system
- Electric parking brake (with auto-hold function)
- Polestar Digital Key
- Upholstery: embossed fabric with 3D etched decor
- Radio accessories: Digital radio DAB+
- Rain sensor
- Indirect tire pressure monitoring
- Tire repair kit
- Wheels: 19" alloy wheels with 5 V-spokes, black, diamond cut (with tires 245/45 R19 on 8Jx19 ET50 front, 9Jx19 ET53 rear)
- Whiplash protection system (In the event of a collision, the backrest and headrest of the front seat move as a unit with the occupant to support their neck.)
- Servotronic
- Seat belts (warning for unfastened seat belts, belt tensioners in the front and on the outer rear seats)
- Seats: Front seats with seat heating
- Lane Keeping Assist (LKA) (The lane keeping assist steers the vehicle back into the lane and/or warns the driver with steering wheel vibrations.)
- Vehicle Deceleration Control (ABS, Electronic Brake Distribution and Emergency Brake Assist)
- Immobiliser
- 2 USB ports on the front
- Airbags, driver and front passenger (passenger airbag, deactivatable)
- Alarm system (double locking - Alarm inclination sensor and motion sensor)
- Automatically folding exterior mirrors
- Hill start assist
- Bluetooth
- CleanZone (cabin air filter)
- Driver Alert Control
- Front and rear parking assist
- Electric tailgate with soft closing
- First aid kit
- Driver display 12.3" (progressive digital display)
- electric window regulator
- Forward Collision Warning
- Speed limiter and cruise control
- Large, vertical display with touchscreen (11, 15")
- High Performance audio (8 speakers/250 W)
- Interior rearview mirror with automatic dimming function
- Integrated eSIM (with constant internet connectivity)
- ISOFIX attachment for front passenger seat and outer rear seats
- Collision avoidance and mitigation (with braking and steering support - vehicle, cyclist and pedestrian detection)
- Charging cable (7 meters) for normal sockets (10A 2.3kW - Schuko plug, Type 2, Mode 2)
- Steering wheel: Multifunction steering wheel, height and reach adjustable
- One pedal drive (regenerative braking)
- Polestar Connect (Thanks to Polestar Connect, the driver can communicate with the Polestar 2. For example, the Polestar Connect app allows the driver to switch on the climate control without entering the passenger compartment. The vehicle has buttons for making breakdown or emergency calls. In the event of an accident, the Polestar 2 even automatically makes an emergency call and a call if it is stolen.)
- Rear view camera
- Rear lights, Full-LED (Full LED rear light with persistent light signature - automatically dimming)
- Keyless opening and starting (remote control for central locking including charging flap - electrically operated trunk lid with extra-wide foot sensor)
- Seats: Split and foldable rear bench seat (40/60)
- Seats: Semi-electric seats, front (driver's seat memory - lumbar support, front - 4-way electrically adjustable)
- Electronic Stability Control (ESC) and traction control
- 12V socket in the trunk
- Textile floor mats



- Hexagonal gear selector with illuminated Polestar symbol

- Traffic Sign Information (RSI) (Using a camera or information from the Sensus navigation system, it provides information on speed limits, no-overtaking zones, one-way streets and various supplementary signs. The traffic sign is displayed on the speedometer or in the head-up display.)

Extra equipment

- Package: Plus (Panoramic glass roof with projected Polestar logo, heat pump, WeaveTech seats - Black Ash decor, electrically adjustable front seats with 4-way power lumbar support (memory for driver's seat), leg rest and storage nets in the backrest, heated rear seats, steering wheel and windshield washer nozzles, high-level interior lighting, Harman Kardon premium sound system with 13 speakers, 15W wireless smartphone charging, bag holders, tinted rear window, air quality)
- Package: Pilot Little (Pilot Assist: keeps the vehicle in the center of the lane by intervening in the steering - Blind Spot Information system with steer assist - Adaptive Cruise Control - Cross Traffic Alert with brake support - Rear Collision Warning & Mitigation - Emergency Stop Assist - 360° camera - Side parking aid - LED front fog lights - Automatically dimming exterior mirrors)
- Paint finish: Metallic

Brief expert findings

Documents submitted	At the time of the inspection, the vehicle registration certificate Part 2 (title) was available, but the vehicle registration certificate Part 1 (document) was not. (Copy)
VIN comparison	The vehicle identification number (VIN) was read from the vehicle and its conformity with the submitted documents was confirmed by the undersigned during the inspection.
Inspection	The inspection conditions were sufficient for the assessment of the vehicle. Lifting equipment and/or a pit were available for examining the vehicle.
Test drive	No test drive/shunting maneuver was carried out during the inspection of the vehicle.
Engine function test	An engine test run was performed.

Value reducing factors

No.	Component group	Description
1	Door - front left side	Door - dent(s) - Smooth repair work
2	Interior	Interior (Tier) - Odour - Ozone treatment
3	Rear bumper	Rear bumper (Kante) - Scratched - Paint

Wear and tear

No.	Component group	Description
1	Misc.	Main inspection - No evidence - No deduction

The vehicle shows signs of wear and tear commensurate with its age and use.

Missing parts

Description

Documents - Log book



Order/Scope of Order

An order was placed to prepare a sales report for the described vehicle. This report includes the following:

- Description of key vehicle information
- Documentation of equipment features
(Delivery by third-party service providers)
- Documentation of damage, defects, missing parts
- Documentation of prior damage, unrepaired prior damage, repainting
- A brief visual or functional inspection of the equipment details, if possible.
(Functional testing of driver assistance systems is not included in the scope of services!)
- a photographic documentation of the vehicle

Basis for the order

This product is based on the guidelines for vehicle returns and valuations published by Alphabet Fleet GmbH. The expert makes the specific findings in each individual case objectively, within the framework of the prescribed standards, based on their own expertise.

The vehicle inspection takes place in a fully assembled, unassembled state.

Damage or defects that can only be detected during disassembly/diagnostic work or through further investigation remain within the realm of prognostic risk. An increased risk exists due to concealed defects caused by fraudulent misrepresentation and which were not identifiable by the expert.

Damage or defects resulting from normal use or wear and tear of the vehicle will be accepted in accordance with the applicable standard.

There was no explicit identification or monetary consideration of the expected features within the product.

Features which, in their nature and extent, slightly exceed normal use but do not constitute unacceptable damage, will be documented and indicated as signs of wear, if applicable.

Damage or defects that, according to the applicable standard, can no longer be attributed to normal use or wear and tear are listed under "Value Reducing Factors" in the product description.

Depending on the product specification, a monetary ID can be provided. If this takes place, the costs can be 100% or pro rata depending on the vehicle's age and mileage.

Previous damages

No apparent prior damage that had been repaired could be found on the vehicle.

Comments

- Winterradsatz ist kein Bestandteil des Auslieferungsumfangs.



Figure 1: Diagonal front (left)



Figure 2: Diagonal front (right)



Figure 3: Diagonal rear (left)



Figure 4: Diagonal rear (right)



Figure 5: Interior - front



Figure 6: Interior - rear



Figure 7: Instrument cluster



Figure 8: Instrument panel



Figure 9: Interior 360° view



Figure 10: Cargo area



Figure 11: VIN



Figure 12: Mounted tyres



Figure 13: Documents



Figure 14: Additional tyres



Figure 15: Navigation

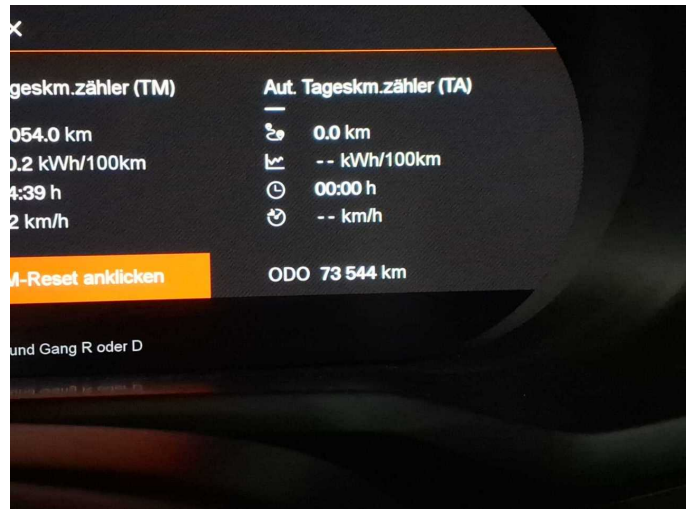


Figure 16: Misc.

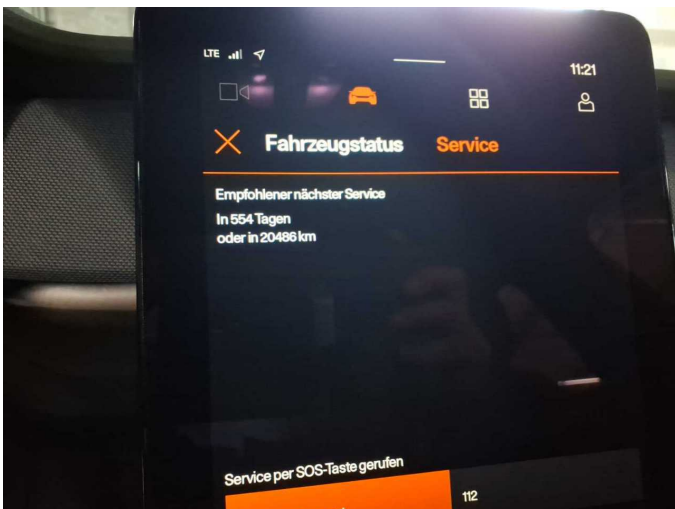


Figure 17: Misc.

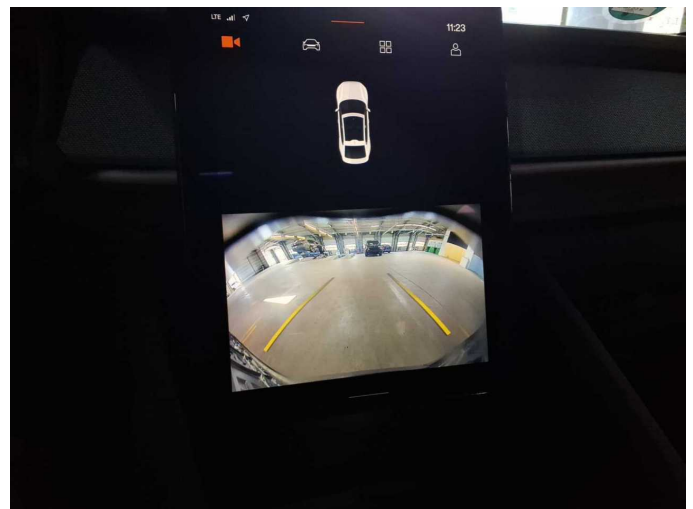


Figure 18: Misc.



Figure 19: Misc.



Figure 20: Misc.

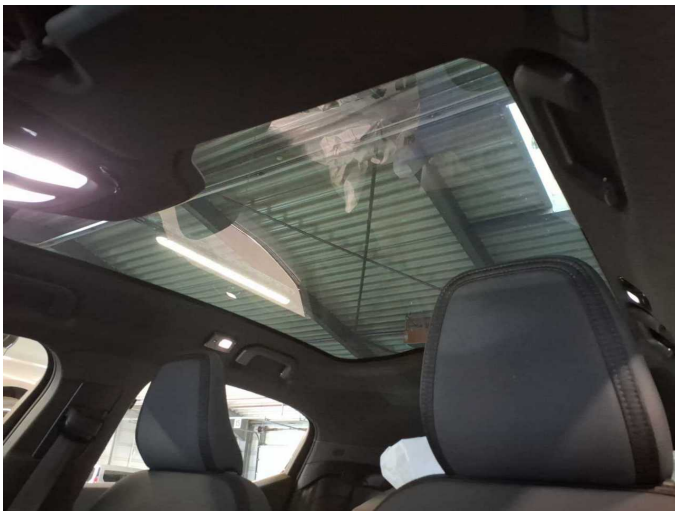


Figure 21: Misc.



Figure 22: Misc.



Figure 23: Misc.



Figure 24: Misc.



Figure 25: Misc.



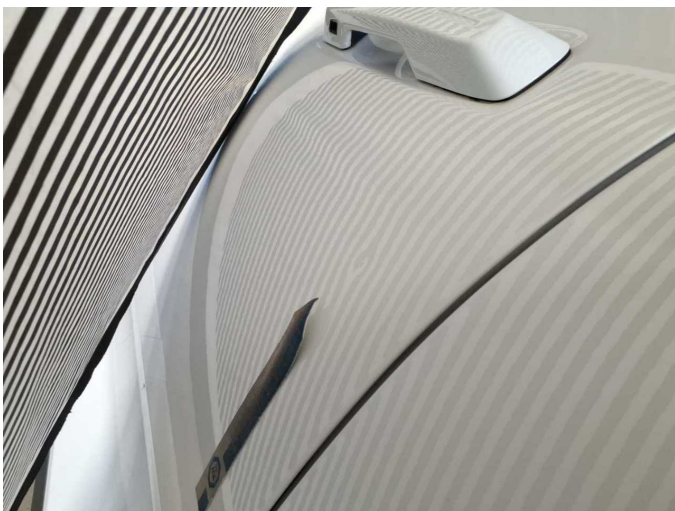
Figure 26: Misc.



Figure 27: Misc.



Damage 1: Door - front left side: Door - dent(s) - Smooth repair work



Damage 1: Door - front left side: Door - dent(s) - Smooth repair work



Damage 3: Rear bumper: Rear bumper (Kante) - Scratched - Paint



Damage 3: Rear bumper: Rear bumper (Kante) - Scratched - Paint



Damage 3: Rear bumper: Rear bumper (Kante) - Scratched - Paint



Damage 3: Rear bumper: Rear bumper (Kante) - Scratched - Paint



Damage 3: Rear bumper: Rear bumper (Kante) - Scratched - Paint



Missing part 1: Documents: Log book - Missing - Replace



Wartungshistorie

(gemäß Auftraggeber Informationen)

Fahrgestellnummer: YSMVSEDE8PL156478

Hersteller / Modell: POLESTAR POLESTAR Polestar 2 Dual Motor 78kWh

Datum	KM-Stand	Beschreibung
07.01.2026	64.020	Regelwartungsdienst