

## Expertise

Protocol number: 46328573  
Order No. / Reference: 26707650  
Inspection date: 6 Jul 2026

Manufacturer: Skoda

Model: Kodiaq 2.0 TDI DSG L&K

VIN: TMBJJ9NS6P8033600



### Vehicle details

#### Manufacturer / Type / Model / Equipment

Skoda Kodiaq 2.0 TDI DSG L&K

**Vehicle Identification number** TMBJJ9NS6P8033600

**Mileage (Read)** 196,429 km

**First registration** 3 Feb 2023

**Number of holders** 1

**Next periodical technical inspection** 02/2028

(Report not on hand)

**Power / Engine displacement** 110 kw / 1,968 ccm

**Fuel type / Cylinder** Diesel / 4

**Gearbox / Number of gears** Automatic / 7

**Type of drive** Front drive

**Type of vehicle** SUV

**Colour / colour code** moonweiss-metallic  
(S9R)

**Doors / Seats** 5 / 7

**Upholstery type** Leather

**Colour of upholstery** Black-Anthracite

**Vehicle with smoke odor** no

**readiness to drive** Not roadworthy /  
moveable



## Vehicle details

<b>Maintenance booklet / proof</b>	digital proof / complete	<b>Next maintenance in</b>	15,500 km
<b>Last service on / at</b>	03/2026 at 182,863 km		
<b>Key is / should be</b>	2 / 2	<b>FZG documents</b>	ZB#2 (B) was available (copy), ZB#1 (S) was not available.
		<b>Letter No.</b>	GQ544526
<b>Previous damage / Accident</b>	None detectable	<b>Repainting</b>	Detectable
<b>Inspection conditions</b>	sufficient	<b>Lifting equipment / pit</b>	yes
<b>Test drive</b>	Not performed	<b>Engine function test</b>	Performed
<b>readiness to drive</b>	Not roadworthy / moveable		
<b>Manufacturer key number/ type code number</b>	8004 / ART 03956		
<b>Emission standard</b>	EURO6;WLTP;AP;PI/CI; M, N1 I	<b>fine dust sticker</b>	
<b>Permitted total weight</b>	2,350 kg	<b>Empty weight</b>	

## Tyres

### Mounted tyres

#	Tyre size	Type of tyre	Manufacturer	Tread depth
1)	235/50 R19 99V	Summer tyres (with run-flat tyres) on Light alloy	Continental	7mm / 7mm
2)	235/50 R19 99V	Summer tyres (with run-flat tyres) on Light alloy	Continental	6mm / 6mm

### Additional tyres

#	Tyre size	Type of tyre	Manufacturer	Tread depth
1)	215/65 R17 103H	Winter tyres on Light alloy	Pirelli	5mm / 5mm
2)	215/65 R17 103H	Winter tyres on Light alloy	Pirelli	6mm / 6mm

### Replacement

Typ	Tyre size	Type of tyre	Manufacturer	Tread depth
N	145/85 R18 103M	Summer tyres on Steel	Sonstige	5 mm

**Legend: Tread depth information for the left tyre is listed first, for the right tyre it is listed second on the axle in the direction of travel.**

TÜV SÜD Auto Partner GmbH  
Wiesenring 2  
04159 Leipzig

Inspection location  
ARS Altmann AG Niederlassung  
Wolnzach  
Feierabendmühle 2  
85283 Wolnzach



## Equipment



## Standard equipment

- 12V socket in the center console and in the trunk
- Storage compartments behind the wheel arches in the trunk
- front aero windshield wipers
- Airbag, driver's knee airbag
- Airbag, head airbags
- Allergen filter
- Traction control (ASR)
- Electrically folding exterior mirrors including interior and driver's side mirrors with automatic dimming
- Hill start assist
- Care Connect: Proactive services (10-year term) (Remote Access (1-year term))
- Decorative inlay Piano-Black L&K
- Diesel particulate filter
- Third brake light (in the rear spoiler (LED))
- eCall (automatic emergency call function in case of an accident with airbag deployment)
- Electronic transverse differential lock (XDS+)
- Driving light assistant and rain sensor ((tunnel light, coming and leaving home function))
- High Beam Assist (Light Assist)
- front and rear floor mats
- rear footwell lighting
- Closed storage compartment on the driver's side
- Transmission: 7-speed dual-clutch transmission (DSG)
- Illuminated glove compartment
- Kessy - keyless entry and start-stop system
- Climatronic air conditioning (2-zone) (fully automatic, separately adjustable for driver and front passenger including humidity sensor and odor and allergen filter)
- LED ambient lighting (decorative strips in the door panels with selectable color climate, LED reading lights in the front, LED lighting for the make-up mirrors in the sun visors)
- Steering wheel: Leather steering wheel with multifunction buttons including paddle shifters (height and reach adjustable)
- Engine drag torque control (MSR)
- Multi-collision brake
- Stainless steel pedal design
- Progressive steering
- Wheel arch cover (front and rear, made of plastic, black textured)
- Radio accessories: CANTON sound system (11 speakers, 1 subwoofer, digital equalizer, 575W)
- Radio accessories: SmartLink (Android Auto and Apple CarPlay)
- Wheels: 18" steel spare wheel, space-saving (tire 145/85 R18 incl. jack, wheel bolt wrench, load floor cover replaces tire mobility kit)
- Heated windshield washer nozzles, front
- Headlights washer / wiper system
- Storage compartment on the left wheel arch
- Adaptive Cruise Control (ACC) (control range up to 210 km/h) (replaces cruise control)
- Airbag for driver and front passenger (passenger airbag can be deactivated)
- Airbag, front side airbags
- Anti-lock braking system (ABS)
- Dashboard in black / black, door trim in black
- Electrically adjustable and heated exterior mirrors with integrated side indicators
- Hydraulic brake assist (HBA)
- Grey headliner
- Roof rails, anodized (including chrome trim strips on the side windows)
- Tachometer
- Easy Start (start-stop button)
- Electric tailgate operation
- Electronic parking brake including auto-hold function
- ESC Electronic Stability Control
- Electric windows front and rear (including anti-pinch protection and child safety lock)
- Front radar assistant including city emergency braking function with pedestrian detection
- Front footwell lighting
- Cruise control
- Tinted windows
- Isofix anchorage on the outer rear seats including top tether
- Boot cover, roll-up and removable
- Front and rear headrests are height-adjustable.
- Paint finish: Metallic / Pearl effect
- LED matrix headlights and dynamic high beam assist (Light Assist)
- LED taillights in crystal glass look & LED license plate lights
- Reading lights at the front of the headliner
- Rear center armrest with cup holders
- Front center armrest, including storage compartment
- Multifunction display in the instrument cluster, color
- Front and rear parking sensors
- Upholstery: Leather interior L&K with ventilated front seats (leather seat surfaces combined with high-quality materials)
- Radio: Bolero infotainment system (Bolero music system - 8" capacitive color display - voice control)
- Radio accessories: Digital radio reception DAB+
- Radio accessories: Wireless SmartLink
- Tire pressure monitoring
- Wheels: 19" Sirius alloy wheels, diamond-cut finish (7Jx19, tires 235/50 R19 99V ET43)
- Rear seat backrest split 60:40, foldable, longitudinally adjustable, backrest angle adjustable
- Electromechanical power steering



- Kodiahq safety belts (Height-adjustable three-point seat belts in the front, with belt tensioners - Three three-point seat belts in the rear - Belt fastening indicator in the front and in the second row of seats)
- Seats: Height-adjustable front seats
- Skoda Care Connect (SOS emergency call function (eCall, including automatic activation in the event of an accident with airbag deployment) - Mobility service (connection for rapid assistance in case of breakdown) - Information service (connection to the hotline for all questions regarding vehicle functions) - Free remote vehicle access for one year with access to vehicle data/functions via smartphone, e.g., parking position, activating hazard warning lights, current fuel level, etc.)
- Front door sill trims
- Variable fastening concept in the trunk
- Lashing eyes in the trunk
- Central locking with remote control (two vehicle keys)

- Seats: Heated front seats
- Seats: Adjustable lumbar support in the front seats
- Seats: Electrically adjustable front seats with memory function
- Seats: Remote release of the rear seat backrests (2nd row) in the boot
- Sun visor on driver and passenger side with illuminated vanity mirror
- Speed limiter
- Lane Assist, Blind Spot Detection and Parking Assist
- Sunset (rear window and rear side windows tinted dark)
- Telephone: Comfort hands-free telephone system including phone box (with inductive charging function (connection via external antenna))
- 360° surround view camera (area view) including reversing camera
- Immobiliser

### Extra equipment

- Swiveling trailer hitch (with electric release, including trailer stabilization)
- ISOFIX preparation on the front passenger seat
- Package: Family (Removable waste bin for the door panel - Sunshades for the rear side windows - Door edge protectors)
- Proactive occupant protection including rear side airbags
- Seats: 3rd row of seats (7-seater), cargo cover in the trunk
- Seats: Heated front and outer rear seats

- Chassis: Adaptive chassis DCC including driving profile selection
- Package: Business Amundsen (L&K) (Amundsen dynamic radio navigation system - Digital Cockpit Plus (10") - Driver fatigue detection - 230V socket and a USB charging port (Type-C) on the back of the front center armrest - Acoustic glazing in the front doors - Luggage net partition - Infotainment Online (3-year subscription))

### Brief expert findings

Documents submitted	At the time of the inspection, the vehicle registration certificate Part 2 (title) was available, but the vehicle registration certificate Part 1 (document) was not. (Copy)
VIN comparison	The vehicle identification number (VIN) was read from the vehicle and its conformity with the submitted documents was confirmed by the undersigned during the inspection.
Inspection	The inspection conditions were sufficient for the assessment of the vehicle. Lifting equipment and/or a pit were available for examining the vehicle.
Test drive	No test drive/shunting maneuver was carried out during the inspection of the vehicle.
Engine function test	An engine test run was performed.
readiness to drive	The vehicle was not capable of driving under its own power at the time of inspection, but can be moved on its own axle with the aid of assistance.

### Value reducing factors

No.	Component group	Description
1	Wing mirror - right side	Cap - Scratch(es) - Smart repair
2	Roof	Roof - dent(s) - Smooth repair work
3	Airbag systems	Airbag system - on - Perform diagnosis
4	Front bumper	Spoiler - Scratch(es) - Smart repair
5	Side panel - rear right side	Sill - Scratch(es) - Smart repair
6	Door - rear left side	Door edge - Scratch(es) - Smart repair
7	Wheel / tyres	Alloy rim - rear left side - Scratch(es) - Loss in value



## Wear and tear

No.	Component group	Description
1	Wheel / tyres	Alloy rim - front right side - Scratch(es) - No deduction
2	Sill - right side	Sill - Scratch(es) - No deduction
3	Side panel - rear left side	Side panel - dent(s) - No deduction
4	Side panel - rear left side	Sill - dent(s) - No deduction

The vehicle shows signs of wear and tear commensurate with its age and use.

## Repainting

### No. Repainting

- 1 Bonnet, Professionally carried out, Invoice of repair done Non-existent
- 2 Side panel - rear left side, Professionally carried out, Invoice of repair done Non-existent
- 3 Side panel - rear right side, Professionally carried out, Invoice of repair done Non-existent
- 4 Door - rear left side, Professionally carried out, Invoice of repair done Non-existent
- 5 Door - rear right side, Professionally carried out, Invoice of repair done Non-existent
- 6 Door - front right side, Professionally carried out, Invoice of repair done Non-existent

## Paint coat thickness measurement

Bonnet	197 µm	Side panel - rear left side	252 µm
Side panel - rear right side	210 µm	Door - rear left side	197 µm
Door - rear right side	173 µm	Door - front right side	185 µm

## Order/Scope of Order

An order was placed to prepare a sales report for the described vehicle. This report includes the following:

- Description of key vehicle information
- Documentation of equipment features  
(*Delivery by third-party service providers*)
- Documentation of damage, defects, missing parts
- Documentation of prior damage, unrepaired prior damage, repainting
- A brief visual or functional inspection of the equipment details, if possible.  
(*Functional testing of driver assistance systems is not included in the scope of services!*)
- a photographic documentation of the vehicle



## Basis for the order

This product is based on the guidelines for vehicle returns and valuations published by Alphabet Fleet GmbH. The expert makes the specific findings in each individual case objectively, within the framework of the prescribed standards, based on their own expertise.

The vehicle inspection takes place in a fully assembled, unassembled state.

Damage or defects that can only be detected during disassembly/diagnostic work or through further investigation remain within the realm of prognostic risk. An increased risk exists due to concealed defects caused by fraudulent misrepresentation and which were not identifiable by the expert.

Damage or defects resulting from normal use or wear and tear of the vehicle will be accepted in accordance with the applicable standard.

There was no explicit identification or monetary consideration of the expected features within the product.

Features which, in their nature and extent, slightly exceed normal use but do not constitute unacceptable damage, will be documented and indicated as signs of wear, if applicable.

Damage or defects that, according to the applicable standard, can no longer be attributed to normal use or wear and tear are listed under "Value Reducing Factors" in the product description.

Depending on the product specification, a monetary ID can be provided. If this takes place, the costs can be 100% d or pro rata depending on the vehicle's age and mileage.

## Previous damages

No apparent prior damage that had been repaired could be found on the vehicle.

## Comments

Der beiliegende Winterradsatz ist kein Bestandteil der Auslieferungsumfangs.



Figure 1: Diagonal front (left)



Figure 2: Diagonal front (right)



Figure 3: Diagonal rear (left)



Figure 4: Diagonal rear (right)



Figure 5: Interior - front



Figure 6: Interior - rear



Figure 7: Instrument cluster



Figure 8: Instrument panel

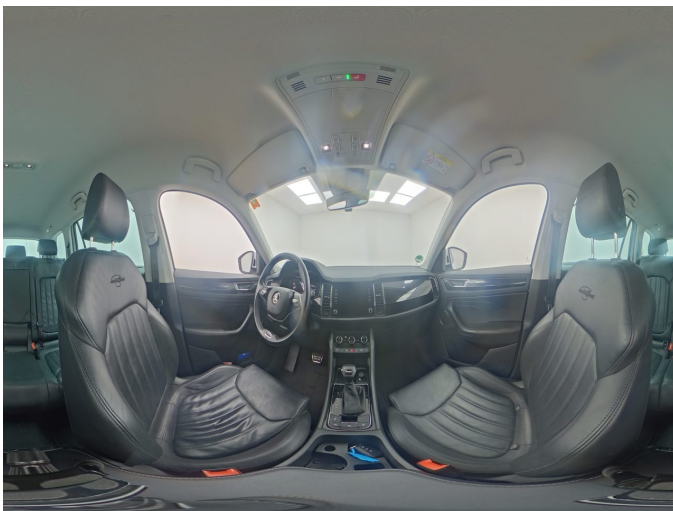


Figure 9: Interior 360° view



Figure 10: Cargo area



Figure 11: VIN



Figure 12: Mounted tyres



Figure 13: Documents

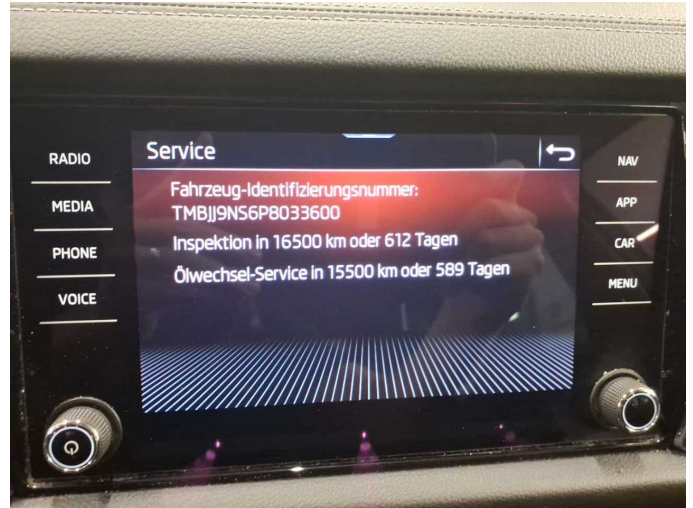


Figure 14: Documents



Figure 15: Additional tyres



Figure 16: Navigation



Figure 17: Misc.

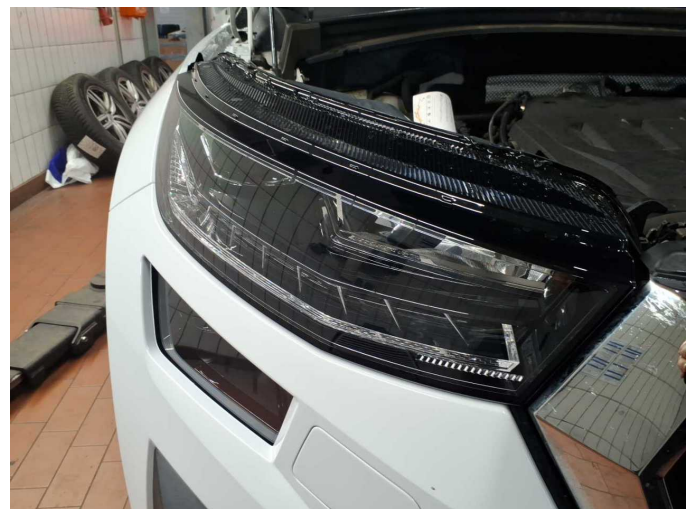


Figure 18: Misc.

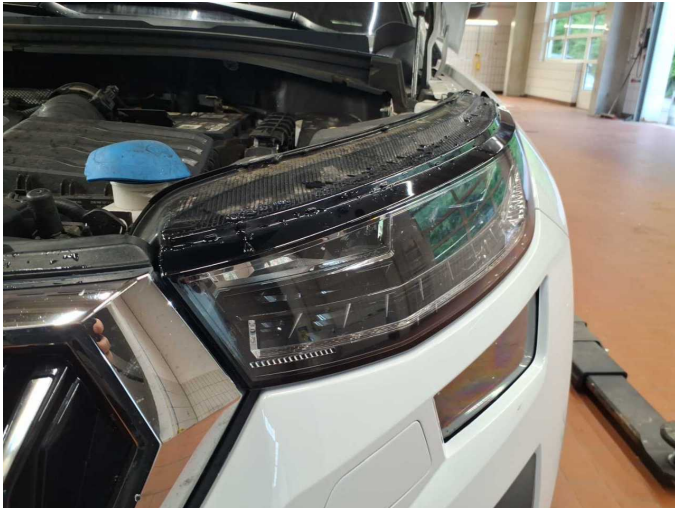


Figure 19: Misc.



Figure 20: Misc.



Figure 21: Misc.



Figure 22: Misc.



Figure 23: Misc.

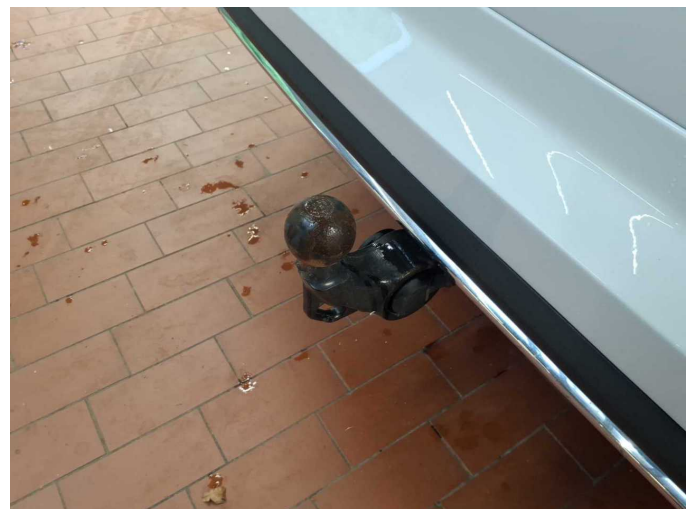


Figure 24: Misc.



Figure 25: Misc.



Figure 26: Misc.



Figure 27: Misc.



Figure 28: Misc.



Figure 29: Misc.



Figure 30: Misc.



Figure 31: Misc.



Figure 32: Misc.



Figure 33: Misc.



Figure 34: Misc.



Damage 1: Wing mirror - right side: Cap - Scratch(es) - Smart repair



Damage 1: Wing mirror - right side: Cap - Scratch(es) - Smart repair



**Damage 2:** Roof: Roof - dent(s) - Smooth repair work



**Damage 2:** Roof: Roof - dent(s) - Smooth repair work



**Damage 3:** Airbag systems: Airbag system - on - Perform diagnosis



**Damage 4:** Front bumper: Spoiler - Scratch(es) - Smart repair



**Damage 4:** Front bumper: Spoiler - Scratch(es) - Smart repair



**Damage 5:** Side panel - rear right side: Sill - Scratch(es) - Smart repair



**Damage 5:** Side panel - rear right side: Sill - Scratch(es) - Smart repair



**Damage 6:** Door - rear left side: Door edge - Scratch(es) - Smart repair



**Damage 6:** Door - rear left side: Door edge - Scratch(es) - Smart repair



**Damage 7:** Wheel / tyres: Alloy rim - rear left side - Scratch(es) - Loss in value



**Damage 7:** Wheel / tyres: Alloy rim - rear left side - Scratch(es) - Loss in value



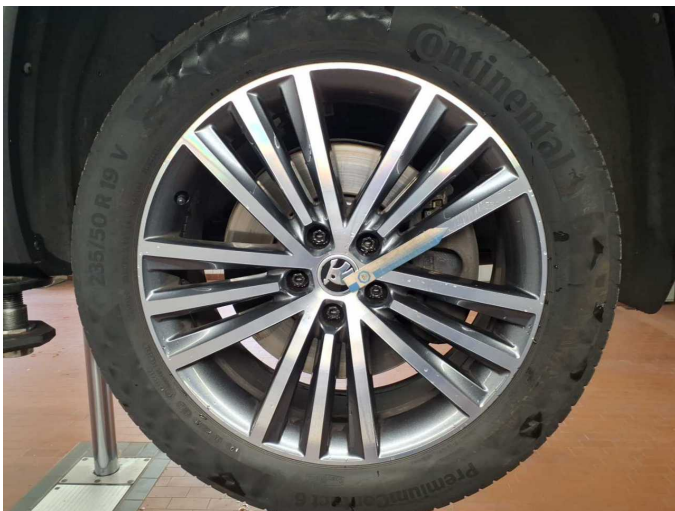
**Damage 7:** Wheel / tyres: Alloy rim - rear left side - Scratch(es) - Loss in value



**Damage 7:** Wheel / tyres: Alloy rim - rear left side - Scratch(es) - Loss in value



**Wear and tear 1:** Wheel / tyres: Alloy rim - front right side - Scratch(es) - No deduction



**Wear and tear 1:** Wheel / tyres: Alloy rim - front right side - Scratch(es) - No deduction



**Repainting 1:** Bonnet



**Repainting 2:** Side panel - rear left side



**Repainting 3:** Side panel - rear right side



**Repainting 4:** Door - rear left side



**Repainting 5:** Door - rear right side



**Repainting 6:** Door - front right side



# Wartungshistorie

(gemäß Auftraggeber Informationen)

Fahrgestellnummer: TMBJJ9NS6P8033600  
Hersteller / Modell: SKODA SKODA Kodiaq 2.0 TDI DSG L&K

Datum	KM-Stand	Beschreibung
24.04.2026	191.666	Reparatur Sonstiges; Systemtest/Eigendiagnose
10.03.2026	182.863	Kraftstofffilter ern; Luftfiltereinsatz ern; Motoröl b. Wartung; Ölfilter ern; Regelwartungsdienst; Systemtest/Eigendiagnose; Wartung Sonstiges
03.02.2026	173.577	AU; Bremse Sonstiges; Bremsklötze hinten; Bremsklötze vorne; Bremsscheiben + Klötze h; Bremsscheiben + Klötze v; Bremsscheiben hinten; Bremsscheiben vorne
16.10.2025	152.110	Motoröl b. Wartung; Ölfilter ern; Regelwartungsdienst; Wartung Sonstiges
05.06.2025	122.575	Bremsflüssigkeit; Bremsflüssigkeit ern; Getriebeöl ern/prüfen; Motoröl b. Wartung; Ölfilter ern; Regelwartungsdienst; Wartung Sonstiges
02.12.2024	90.159	Bremse Sonstiges; Bremsklötze hinten; Bremsklötze vorne; Bremsscheiben hinten; Bremsscheiben vorne; Kraftstofffilter ern; Luftfiltereinsatz ern; Motoröl b. Wartung; Ölfilter ern; Regelwartungsdienst; Systemtest/Eigendiagnose; Wartung Sonstiges
23.08.2024	61.554	Motoröl b. Wartung; Ölfilter ern; Regelwartungsdienst; Wartung Sonstiges
13.11.2023	30.354	Motoröl b. Wartung; Ölfilter ern; Regelwartungsdienst; Wartung Sonstiges