

## Expertise

Protocol number: 45585800  
Order No. / Reference: 26320094  
Inspection date: 21 May 2026

Manufacturer: Volvo

Model: XC60 T6 AWD Recharge Plus Bright

VIN: LYVUZH1V9PB252486



### Vehicle details

#### Manufacturer / Type / Model / Equipment

Volvo XC60 T6 AWD Recharge Plus Bright

**Vehicle Identification number** LYVUZH1V9PB252486

**Mileage (Read)** 57,240 km

**First registration** 23 Feb 2023

**Number of holders** 1

**Power / Engine displacement** 186 kw / 1,969 ccm

**Fuel type / Cylinder** Hybr.B/E ext.auf1 / 4

**Gearbox / Number of gears** Automatic / 8

**Type of drive** All-wheel drive

**Type of vehicle** SUV

**Colour / colour code** Crystal Weiß-Perleffekt

**Doors / Seats** 5 / 5

**Upholstery type** Leather

**Colour of upholstery** Beige



## Vehicle details

<b>Maintenance booklet / proof</b>	digital proof / complete	<b>Next maintenance in</b>	306 Tag(e)
<b>Last service on / at</b>	04/2025 at 43,805 km		
<b>Key is / should be</b>	2 / 2	<b>FZG documents</b>	ZB#2 (B) was available (copy), ZB#1 (S) was not available.
		<b>Letter No.</b>	GQ211527
<b>Previous damage / Accident</b>	Detectable	<b>Repainting</b>	None detectable
<b>Inspection conditions</b>	sufficient	<b>Lifting equipment / pit</b>	yes
<b>Test drive</b>	Not performed	<b>Engine function test</b>	Performed
<b>Manufacturer key number/ type code number</b>	9101 / BRS 00017		
<b>Emission standard</b>	EURO6;WLTP;AP;PI/CI; M, N1 I	<b>fine dust sticker</b>	
<b>Permitted total weight</b>	2,660 kg	<b>Empty weight</b>	

## Tyres

### Mounted tyres

#	Tyre size	Type of tyre	Manufacturer	Tread depth
1)	235/60 R18 107H	Winter tyres on Light alloy	Michelin	5mm / 5mm
2)	235/60 R18 107H	Winter tyres on Light alloy	Michelin	5mm / 5mm

### Additional tyres

#	Tyre size	Type of tyre	Manufacturer	Tread depth
1)	235/55 R19 105V	Summer tyres on Light alloy	Continental	5mm / 5mm
2)	235/55 R19 105V	Summer tyres on Light alloy	Continental	5mm / 5mm

### Replacement

Typ	Tyre size	Type of tyre	Manufacturer	Tread depth
	Tirefit	Expiration date 10/2026		

**Legend: Tread depth information for the left tire is listed first, for the right tire it is listed second on the axle in the direction of travel.**

TÜV SÜD Auto Partner GmbH  
Wiesenring 2  
04159 Leipzig

Inspection location  
Hartmann Fleet Professionals GmbH  
Industriestraße 11  
36272 Niederaula



## Equipment



## Standard equipment

- ABS - Anti-lock Braking System
- Driver and passenger side airbags with two-stage deployment system
- Airbag, side airbags for driver and front passenger and head/shoulder airbags for all occupants
- Ambient lighting
- Electrically folding exterior mirrors
- Heated exterior mirrors and rear window (automatic)
- Hill Descent Control (HDC)
- Fog sensor for automatic activation of the defroster function
- On-board computer
- Chrome applications on the rear of the vehicle
- Chrome trim strip in the door sill area with Recharge lettering
- Aluminum roof rails (integrated)
- Digital services including Google Maps navigation system
- Rear parking assist with automatic braking intervention (rear)
- Electronic differential lock
- Electric windows front and rear
- Chrome window surround
- Luggage compartment partition net
- Front seat belt height adjustment
- Interior and exterior mirrors automatically dimming
- Intelligent driver information system
- Keyless Drive (electronic access system)
- Child safety lock for the rear doors (electric)
- Headrests (5) front and rear
- Charging box under the cargo floor
- Stainless steel loading sill protector in the luggage compartment
- Steering wheel adjustable for height and reach
- Steering wheel: Three-spoke steering wheel, leather-free
- Illuminated makeup mirror for driver and front passenger
- Emergency brake lights
- Package: Parking Assistance Package
- Package: Winter Package
- Electric parking brake
- Upholstery: Leather/leatherette comfort seats, anthracite
- Radio accessories: Two USB-C ports on the back of the center console
- Run-off Road Protection
- Wheels: Tire sealant
- Rear seats in a 40/60 split or completely foldable with pass-through function
- Speed-sensitive power steering
- Seats: Driver and front passenger seats are height-adjustable (electrically)
- Start/Stop technology
- Phone: Inductive smartphone charging system
- Glazing: Colored glazing
- Preparation for Trailer Stability Assist (TSA)
- Immobiliser
- Acoustic Vehicle Alerting System (AVAS)
- Passenger side airbag can be deactivated
- Airbag, driver's knee airbag
- Active safety belts with belt tensioners
- All-wheel drive (AWD)
- Android infotainment system
- Electrically adjustable exterior mirrors
- Outdoor temperature display
- Hill Start Assist (HSA)
- LED turn signals integrated into the exterior mirrors
- third brake light
- Chrome applications in the front bumper
- CleanZone air quality system with activated carbon filter
- Roof edge spoiler
- Deactivating the high-voltage battery
- Digital Instrumentation 2nd Gen.
- Aluminum door sill plates with Recharge lettering, front
- Electronic Stability Control (ESC)
- Enhanced air quality system with fine dust filtration according to air quality standard PM2.5
- Automatic emergency braking
- Transmission: 8-speed automatic transmission
- Automatic tailgate
- Interior lighting
- ISOFIX mounting for the outer rear seats
- Keyless Start
- Automatic climate control with separate temperature control for driver and front passenger
- charging cable
- Cargo area roller blind
- LED headlights "Thor's Hammer" with high beam assist and integrated LED daytime running lights
- Steering wheel: Multifunction buttons on the steering wheel
- Front center armrest with integrated storage compartment and cup holders
- Package: Seat Comfort Package
- Panoramic glass sunroof with lifting function (electric)
- Parking ticket holder
- Radio: High Performance Sound audio system
- Rain sensor
- Tire pressure monitoring system
- Wheels: 19" alloy wheels, 5-V-spoke sport design, diamond cut/high-gloss black
- Safety Assistance
- Whiplash Protection System (WHIPS)
- Safety braking system with disc brakes all around (internally ventilated)
- Auxiliary heater including timer (fuel-operated)
- Power socket
- First aid kit and warning triangle



- Central locking system with two remote controls and integrated emergency keys

- Lashing eyes in the luggage compartment (foldable)
- Warning tone/indicator when seat belts are not fastened (for all seats)

### Extra equipment

- Alarm system with motion/tilt sensor (security lock)
- Paint finish: Crystal White Pearl Effect
- Package: Light Package (Headlight cleaning system - Full LED headlights "Thor's Hammer" Active High Beam with extended high beam, dynamic cornering lights, intelligent high beam assistant with adaptive headlight range control and integrated LED daytime running lights)
- Parking camera with 360° surround view (including front, side and rear parking aid with automatic braking intervention (rear))
- Radio: Premium Sound audio system by Harman Kardon (600 watts of power - 14 speakers - Fresh Air - Subwoofer - Dirac Unison - Sound optimization)

- Towbar (semi-electric)
- Package: Driver Assistance Package (Driver Assistance: - Adaptive Cruise Control - Emergency Stop Assist - Automatic emergency braking system if warnings are ignored - Pilot Assist - Lane Keeping Assist up to speeds of 130 km/h Driver Awareness: - Blind Spot Information System - Blind Spot Assist including Lane Change Warning for rapidly approaching vehicles including steering intervention - Cross Traffic Alert - Cross-traffic alert with braking intervention - Rear Impact Mitigation - Preventive protection in case of an impending rear-end collision)
- Glazing: Side and rear windows tinted (from the B-pillar back)

### Brief expert findings

Documents submitted	At the time of the inspection, the vehicle registration certificate Part 2 (title) was available, but the vehicle registration certificate Part 1 (document) was not. (Copy)
VIN comparison	The vehicle identification number (VIN) was read from the vehicle and its conformity with the submitted documents was confirmed by the undersigned during the inspection.
Inspection	The inspection conditions were sufficient for the assessment of the vehicle. Lifting equipment and/or a pit were available for examining the vehicle.
Test drive	No test drive/shunting maneuver was carried out during the inspection of the vehicle.
Engine function test	An engine test run was performed.

### Value reducing factors

No.	Component group	Description
1	Rear bumper	Rear bumper - Scratched - Paint
2	Front bumper	Front bumper (+ Zierleiste) - Damaged - repair according to calculation

### Wear and tear

No.	Component group	Description
1	Wheel / tyres	Alloy rim - rear right side - Scratch(es) - No deduction
2	Side panel - rear right side	Side panel - dent(s) - No deduction
3	Misc.	Main inspection - No evidence - No deduction

The vehicle shows signs of wear and tear commensurate with its age and use.

### Previous damages

No.	Previous damage	Extent of damage (Net)
1	Front, Provided by user / customer, from 10 Apr 2025	1.724,76 €



## Order/Scope of Order

An order was placed to prepare a sales report for the described vehicle. This report includes the following:

- Description of key vehicle information
- Documentation of equipment features  
*(Delivery by third-party service providers)*
- Documentation of damage, defects, missing parts
- Documentation of prior damage, unrepaired prior damage, repainting
- A brief visual or functional inspection of the equipment details, if possible.  
*(Functional testing of driver assistance systems is not included in the scope of services!)*
- a photographic documentation of the vehicle

## Basis for the order

This product is based on the guidelines for vehicle returns and valuations published by Alphabet Fleet GmbH. The expert makes the specific findings in each individual case objectively, within the framework of the prescribed standards, based on their own expertise.

The vehicle inspection takes place in a fully assembled, unassembled state.

Damage or defects that can only be detected during disassembly/diagnostic work or through further investigation remain within the realm of prognostic risk. An increased risk exists due to concealed defects caused by fraudulent misrepresentation and which were not identifiable by the expert.

Damage or defects resulting from normal use or wear and tear of the vehicle will be accepted in accordance with the applicable standard.

There was no explicit identification or monetary consideration of the expected features within the product.

Features which, in their nature and extent, slightly exceed normal use but do not constitute unacceptable damage, will be documented and indicated as signs of wear, if applicable.

Damage or defects that, according to the applicable standard, can no longer be attributed to normal use or wear and tear are listed under "Value Reducing Factors" in the product description.

Depending on the product specification, a monetary ID can be provided. If this takes place, the costs can be 100% d or pro rata depending on the vehicle's age and mileage.

## Previous damages

According to available information previous damages were repaired at the vehicle. Traces of repairs, which allow conclusions about the area of repair, were not recognizable during the inspection.

## Comments

Die beigefügte Reparaturkostenkalkulation wurde nach bestem Wissen und Gewissen unter eingeschränkten Besichtigungsbedingung im demontagefreien Zustand erstellt. Es können aufgrund verdeckter Beschädigung, Mehrkosten und somit Abweichung der für die Stoßstange ausgewiesenen Reparaturkosten nicht ausgeschlossen werden.



Figure 1: Diagonal front (left)



Figure 2: Diagonal front (right)



Figure 3: Diagonal rear (left)



Figure 4: Diagonal rear (right)



Figure 5: Interior - front



Figure 6: Interior - rear



Figure 7: Instrument cluster



Figure 8: Instrument panel



Figure 9: Interior 360° view



Figure 10: Cargo area

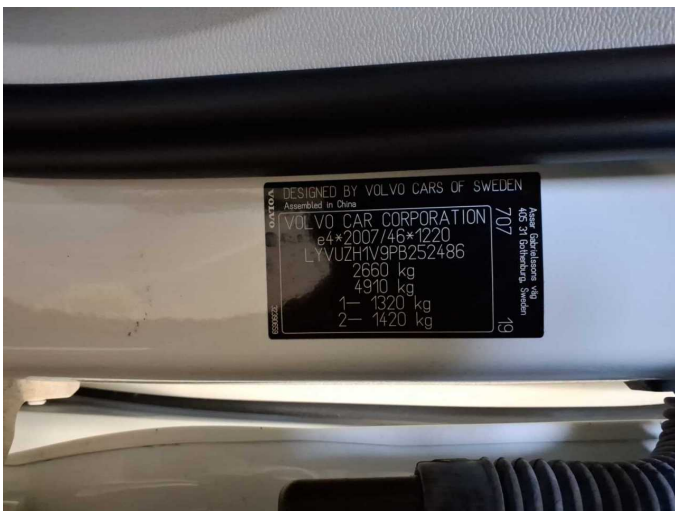


Figure 11: VIN



Figure 12: Mounted tyres



Figure 13: Documents

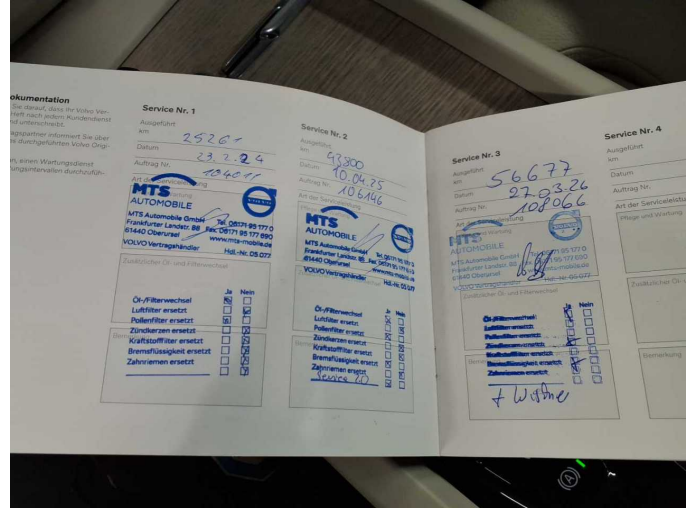


Figure 14: Documents



Figure 15: Additional tyres



Figure 16: Navigation

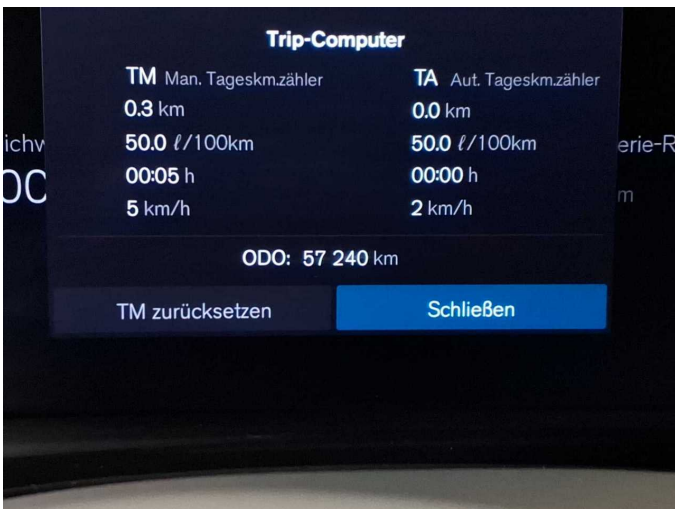


Figure 17: Misc.

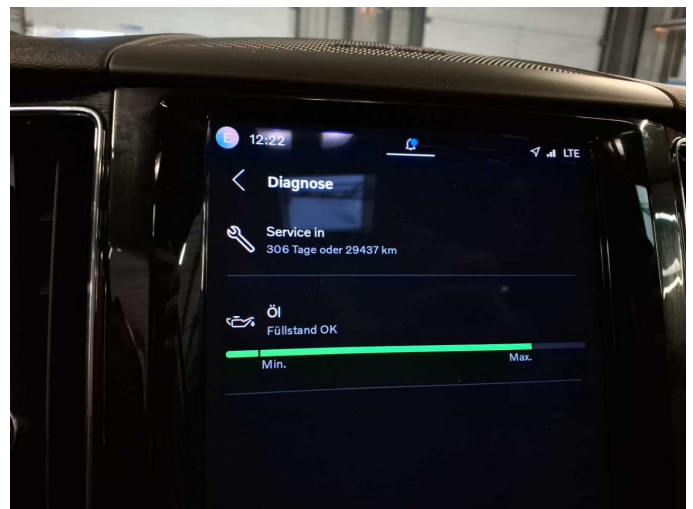


Figure 18: Misc.



Figure 19: Misc.



Figure 20: Misc.



Figure 21: Misc.



Figure 22: Misc.



Figure 23: Misc.



Figure 24: Misc.



Figure 25: Misc.



Figure 26: Misc.



Figure 27: Misc.



Figure 28: Misc.



Figure 29: Misc.



Figure 30: Misc.



Figure 31: Misc.



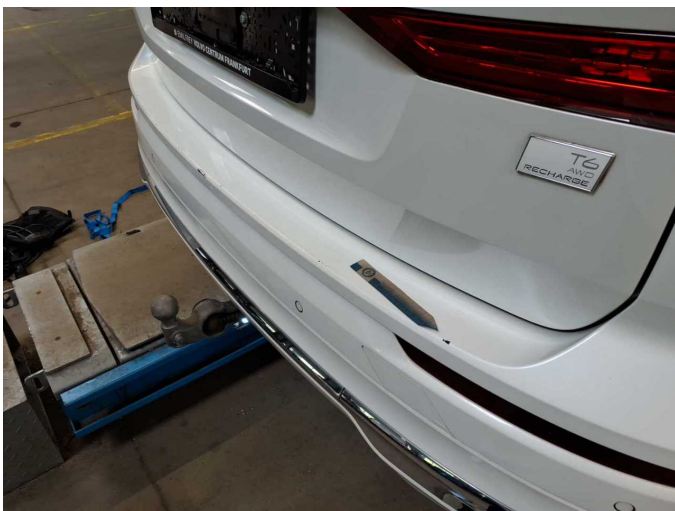
Damage 1: Rear bumper: Rear bumper - Scratched - Paint



Damage 1: Rear bumper: Rear bumper - Scratched - Paint



Damage 1: Rear bumper: Rear bumper - Scratched - Paint



Damage 1: Rear bumper: Rear bumper - Scratched - Paint



Damage 1: Rear bumper: Rear bumper - Scratched - Paint



**Wear and tear 1:** Wheel / tyres: Alloy rim - rear right side - Scratch(es) - No deduction



**Wear and tear 1:** Wheel / tyres: Alloy rim - rear right side - Scratch(es) - No deduction



**Wear and tear 1:** Wheel / tyres: Alloy rim - rear right side - Scratch(es) - No deduction



# Wartungshistorie

(gemäß Auftraggeber Informationen)

Fahrgestellnummer: LYVUZH1V9PB252486

Hersteller / Modell: VOLVO VOLVO XC60 T6 AWD Recharge Plus Bright

Datum	KM-Stand	Beschreibung
10.04.2025	43.805	Bremsflüssigkeit; Bremsflüssigkeit ern; Motoröl b. Wartung; Ölfilter ern; Regelwartungsdienst; Reparatur Sonstiges; Wartung Sonstiges
23.02.2024	25.261	Motoröl b. Wartung; Ölfilter ern; Regelwartungsdienst; Wartung Sonstiges