

## Expertise

Protocol number: 46023893  
Order No. / Reference: 26410573-1  
Inspection date: 18 Jun 2026

Manufacturer: Renault

Model: Trafic Blue dCi 170 EDC Grand Spaceclass

VIN: VF1JL000971193019



### Vehicle details

#### Manufacturer / Type / Model / Equipment

Renault Trafic Blue dCi 170 EDC Grand Spaceclass

**Vehicle Identification number** VF1JL000971193019

**Mileage (Read)** 59,631 km

**First registration** 17 Jul 2023

**Number of holders** 1

**Power / Engine displacement** 125 kw / 1,997 ccm

**Fuel type / Cylinder** Diesel / 4

**Gearbox / Number of gears** Automatic / 6

**Type of drive** Front drive

**Type of vehicle** Van

**Colour / colour code** Kometen-Grau Metallic

**Doors / Seats** 5 / 5

**Upholstery type** Cloth

**Colour of upholstery** Black

**Vehicle with smoke odor** no



## Vehicle details

<b>Maintenance booklet / proof</b>	Non-existent	<b>Next maintenance in</b>	
<b>Key is / should be</b>	2 / 2	<b>FZG documents</b>	ZB#2 (B) was available (copy), ZB#1 (S) was not available.
		<b>Letter No.</b>	GV524422
<b>Previous damage / Accident</b>	Detectable	<b>Repainting</b>	None detectable
<b>Inspection conditions</b>	sufficient	<b>Lifting equipment / pit</b>	yes
<b>Test drive</b>	short drive on the company premises	<b>Engine function test</b>	Performed
<b>Manufacturer key number/ type code number</b>	3333 / BMI 00669		
<b>Emission standard</b>	EURO6;WLTP;AP;PI/CI; M, N1 I	<b>fine dust sticker</b>	
<b>Permitted total weight</b>	3,070 kg	<b>Empty weight</b>	

## Tyres

### Mounted tyres

#	Tyre size	Type of tyre	Manufacturer	Tread depth
1)	215/65 R16 109T	Winter tyres on Light alloy	Fulda	5mm / 5mm
2)	215/65 R16 109T	Winter tyres on Light alloy	Fulda	5mm / 5mm

### Additional tyres

#	Tyre size	Type of tyre	Manufacturer	Tread depth
1)	215/60 R17 109H	Summer tyres on Light alloy	Goodyear	7mm / 7mm
2)	215/60 R17 109H	Summer tyres on Light alloy	Goodyear	7mm / 7mm

**Legend: Tread depth information for the left tire is listed first, for the right tire it is listed second on the axle in the direction of travel.**



## Equipment

### Standard equipment

- 4.2-inch color instrument panel
- ABS with brake force distribution
- Exterior mirrors, electrically folding/adjustable and heated
- Brake assist
- Tachometer
- Rear parking sensors
- Fixed window on the left
- Windows: Rear side windows and rear window heavily tinted
- Transmission: 6-speed EDC dual-clutch transmission
- Interior mirror automatically dimming
- Keycard Handsfree
- Automatic air conditioning
- Front headrests (2), height adjustable
- LED headlights with daytime running lights
- Steering wheel in leather look
- Mobility set
- rear fog light
- Pollen filter
- Radio: EASY LINK 8-inch with smartphone integration
- Tire pressure monitoring system
- Wheels: 17-inch "Avens" alloy wheels with diamond effect
- Sliding door, right with sliding window
- Seats: Armrests on rear seats
- Seats: Driver's seat "Comfort", 3-way adjustable
- 230V power outlet between the 2nd and 3rd row of seats
- Front and rear bumpers
- Carpet
- Electronic immobilizer
- Heat-insulating glass
- Additional heating for passenger compartment

### Extra equipment

- Airbag: Side airbags and front windowbags
- Battery reinforced
- Fatigue warning
- Package: Escapade (Two swiveling individual seats in the second row. - Multifunctional table, foldable and sliding. - Three-seater bench in the third row, foldable to form a flat sleeping surface.)
- Sliding door on the left with sliding window
- Security Package Plus
- Seats: Driver and front passenger seats are heated (with double passenger seat only for the driver, - with single passenger seat for driver and front passenger)

- Storage compartments in the doors
- Airbag: Front airbag for driver and front passenger (can be deactivated)
- third brake light
- Easy-Life drawer
- ESP with load detection, extended grip and hill start assist
- Window: Pane with sliding window, front left
- electric front windows
- luggage compartment cover
- Tailgate, glazed, with heated rear window and rear window wiper
- Child safety lock on the side sliding door
- Rear headrests (6)
- Paint finish: Metallic
- Steering wheel adjustable in 2 ways (depth, height)
- light sensor
- Fog light
- Package: Clear View Package
- Upholstery: Fabric "Java"
- Rain sensor
- Self-cleaning diesel particulate filter
- Shift point indicator
- Power steering
- Seats: Passenger seat "Comfort", 3-way adjustable
- Seats: Bench seat on a rail system for three people
- Connector for engine information
- Cruise control with speed limiter
- Paneling of the side surfaces in the passenger compartment, complete
- Central locking with remote control

- Trailer hitch
- Parking assistance rear, front and side, with reversing camera
- Radio: EASY LINK 8-inch with smartphone integration and navigation (online multimedia system with 8-inch touchscreen - smartphone integration via Android Auto or Apple CarPlay - DAB+ digital radio, FM and AM radio - Bluetooth hands-free system - USB port, audio streaming - voice control - steering wheel controls - navigation system with map data for Europe)



## Brief expert findings

Documents submitted	At the time of the inspection, the vehicle registration certificate Part 2 (title) was available, but the vehicle registration certificate Part 1 (document) was not. (Copy)
VIN comparison	The vehicle identification number (VIN) was read from the vehicle and its conformity with the submitted documents was confirmed by the undersigned during the inspection.
Inspection	The inspection conditions were sufficient for the assessment of the vehicle. Lifting equipment and/or a pit were available for examining the vehicle.
Test drive	A short maneuvering and shunting exercise was carried out on the company premises.
Engine function test	An engine test run was performed.

## Value reducing factors

No.	Component group	Description
1	Door - front right side	Door edge - Scratch(es) - Smart repair
2	Door - rear left side	Brightware - lower - Scratch(es) - Smart repair
3	Side panel - rear left side	Side panel (Blende Heckleuchte) - Scratch(es) - Smart repair
4	Side panel - rear left side	Side panel - dent(s) - Repair and paint
5	Door - front left side	Door - Scratch(es) - Paint
6	Door - rear left side	Door (Und kratzer) - dent(s) - Repair and paint

## Wear and tear

No.	Component group	Description
1	Wing mirror - right side	Cap - Scratch(es) - No deduction

The vehicle shows signs of wear and tear commensurate with its age and use.

## Previous damages

No.	Previous damage	Extent of damage (Net)
1	Side right, Provided by user / customer, from 28 Jun 2025	708,06 €
2	Rear, Side - left, Provided by user / customer, from 20 Jun 2024	2.989,12 €

## Order/Scope of Order

An order was placed to prepare a sales report for the described vehicle. This report includes the following:

- Description of key vehicle information
- Documentation of equipment features  
(*Delivery by third-party service providers*)
- Documentation of damage, defects, missing parts
- Documentation of prior damage, unrepaired prior damage, repainting
- A brief visual or functional inspection of the equipment details, if possible.  
(*Functional testing of driver assistance systems is not included in the scope of services!*)
- a photographic documentation of the vehicle



## Basis for the order

This product is based on the guidelines for vehicle returns and valuations of light commercial vehicles published by Alphabet Fleet Management GmbH. The expert makes the specific findings in each individual case objectively, within the framework of the prescribed standards, based on their own expertise.

The vehicle inspection takes place in a fully assembled, unassembled state.

Damage or defects that can only be detected during disassembly/diagnostic work or through further investigation remain within the realm of prognostic risk. An increased risk exists due to concealed defects caused by fraudulent misrepresentation and which were not identifiable by the expert.

Damage or defects resulting from normal use or wear and tear of the vehicle will be accepted in accordance with the applicable standard.

There was no explicit identification or monetary consideration of the expected features within the product.

Features which, in their nature and extent, slightly exceed normal use but do not constitute unacceptable damage, will be documented and indicated as signs of wear, if applicable.

Damage or defects that, according to the applicable standard, can no longer be attributed to normal use or wear and tear are listed under "Value Reducing Factors" in the product description.

Depending on the product specification, a monetary ID can be provided. If this takes place, the costs can be 100% d or pro rata depending on the vehicle's age and mileage.

## Previous damages

According to available information previous damages were repaired at the vehicle. Traces of repairs, which allow conclusions about the area of repair, were not recognizable during the inspection.

## Comments

- Für den montierten Radsatz lag zum Besichtigungszeitpunkt kein Nachweis über die Zulässigkeit vor.



Figure 1: Diagonal front (left)



Figure 2: Diagonal front (right)



Figure 3: Diagonal rear (left)



Figure 4: Diagonal rear (right)



Figure 5: Interior - front



Figure 6: Interior - rear



Figure 7: Instrument cluster



Figure 8: Instrument panel



Figure 9: Interior 360° view



Figure 10: Cargo area

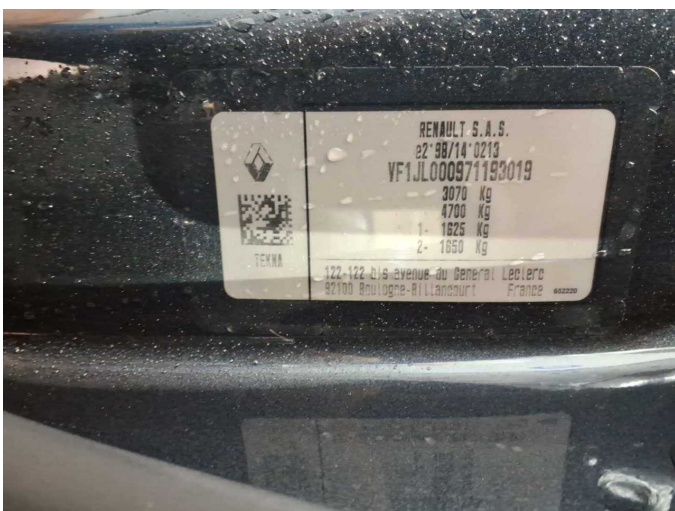


Figure 11: VIN

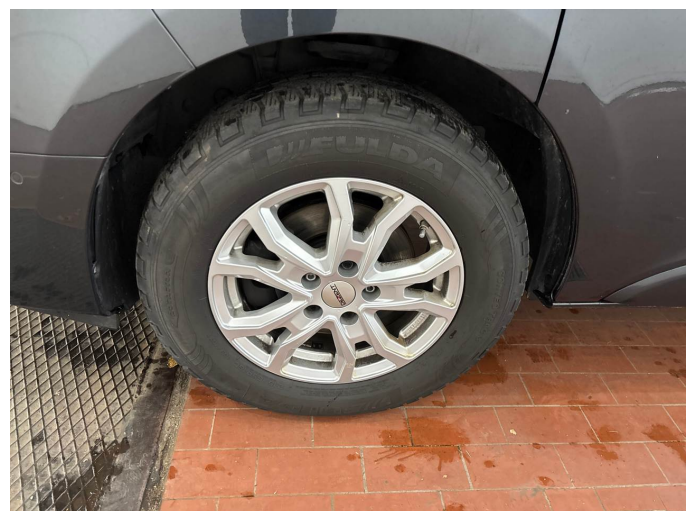


Figure 12: Mounted tyres



Figure 13: Documents



Figure 14: Additional tyres



Figure 15: Navigation



Figure 16: Misc.

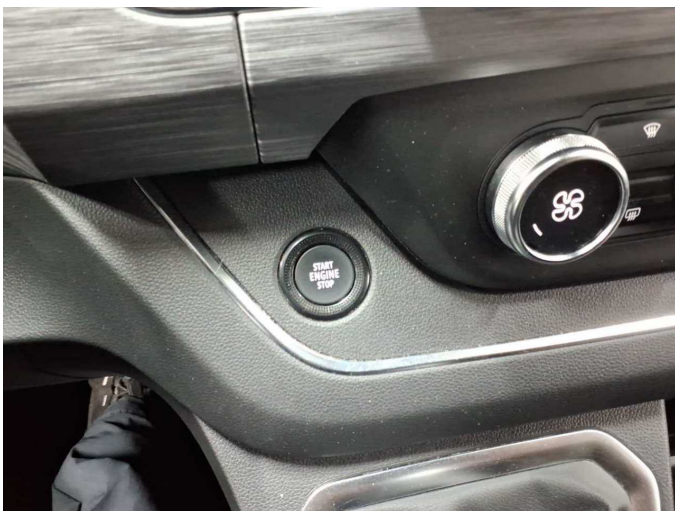


Figure 17: Misc.



Figure 18: Misc.



Figure 19: Misc.



Figure 20: Misc.



Figure 21: Misc.



Figure 22: Misc.



Figure 23: Misc.



Figure 24: Misc.



Figure 25: Misc.



Figure 26: Misc.



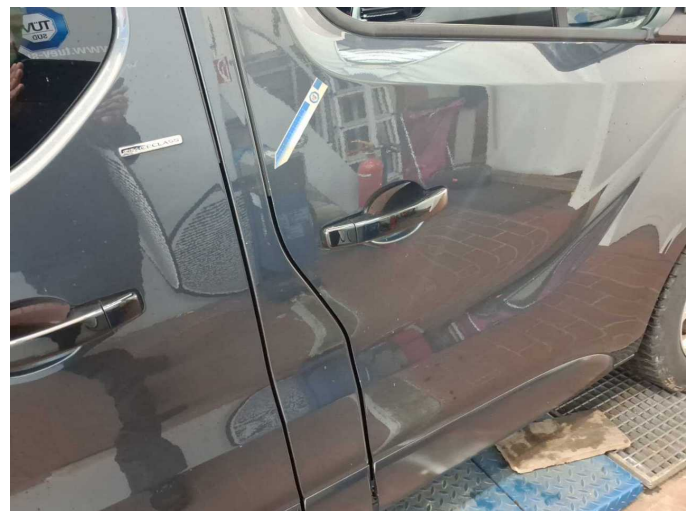
Figure 27: Misc.



Figure 28: Misc.



Figure 29: Misc.



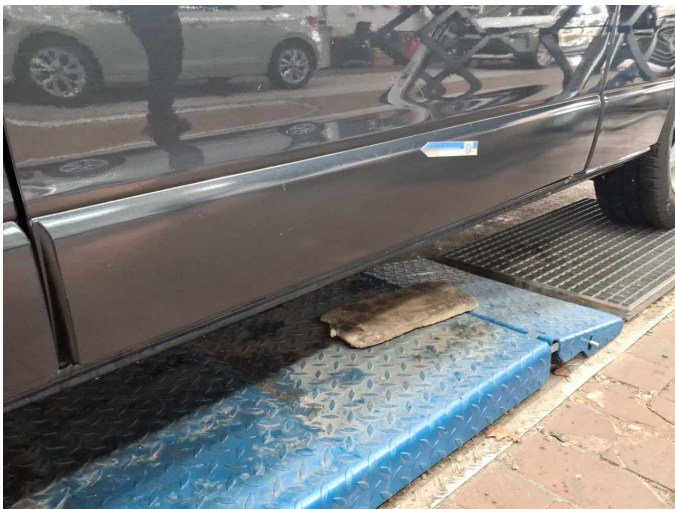
Damage 1: Door - front right side: Door edge - Scratch(es) - Smart repair



**Damage 1:** Door - front right side: Door edge - Scratch(es) - Smart repair



**Damage 1:** Door - front right side: Door edge - Scratch(es) - Smart repair



**Damage 2:** Door - rear left side: Brightware - lower - Scratch(es) - Smart repair



**Damage 2:** Door - rear left side: Brightware - lower - Scratch(es) - Smart repair



**Damage 2:** Door - rear left side: Brightware - lower - Scratch(es) - Smart repair



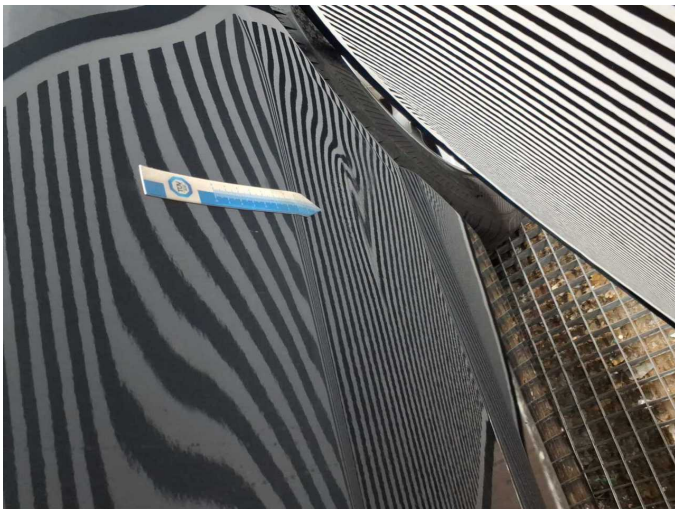
**Damage 3:** Side panel - rear left side: Side panel (Blende Heckleuchte) - Scratch(es) - Smart repair



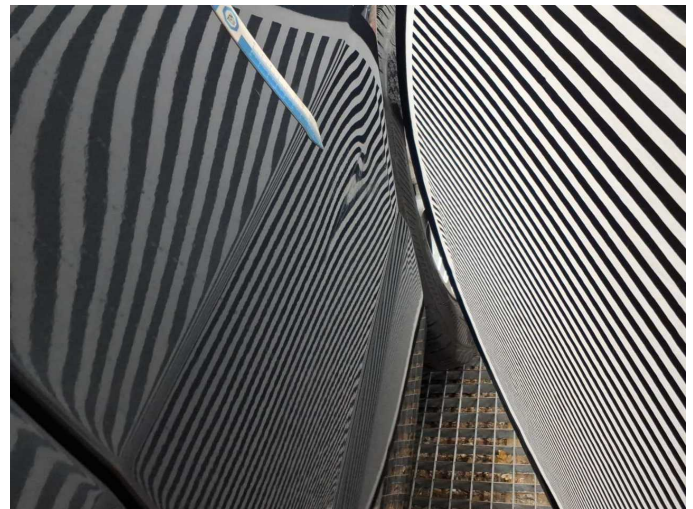
**Damage 3:** Side panel - rear left side: Side panel (Blende Heckleuchte) - Scratch(es) - Smart repair



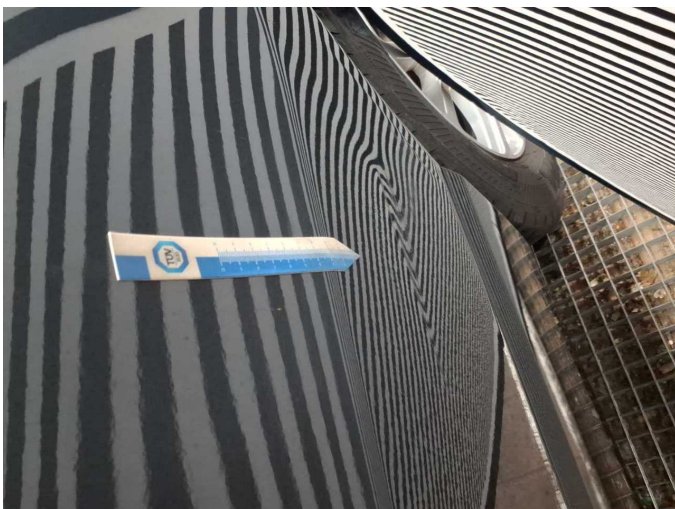
**Damage 4:** Side panel - rear left side: Side panel - dent(s) - Repair and paint



**Damage 4:** Side panel - rear left side: Side panel - dent(s) - Repair and paint



**Damage 4:** Side panel - rear left side: Side panel - dent(s) - Repair and paint



**Damage 4:** Side panel - rear left side: Side panel - dent(s) - Repair and paint



**Damage 4:** Side panel - rear left side: Side panel - dent(s) - Repair and paint



**Damage 4:** Side panel - rear left side: Side panel - dent(s) - Repair and paint



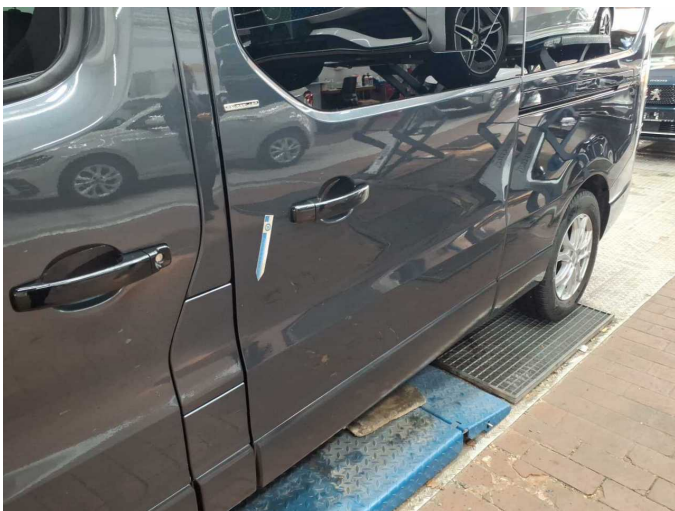
**Damage 5:** Door - front left side: Door - Scratch(es) - Paint



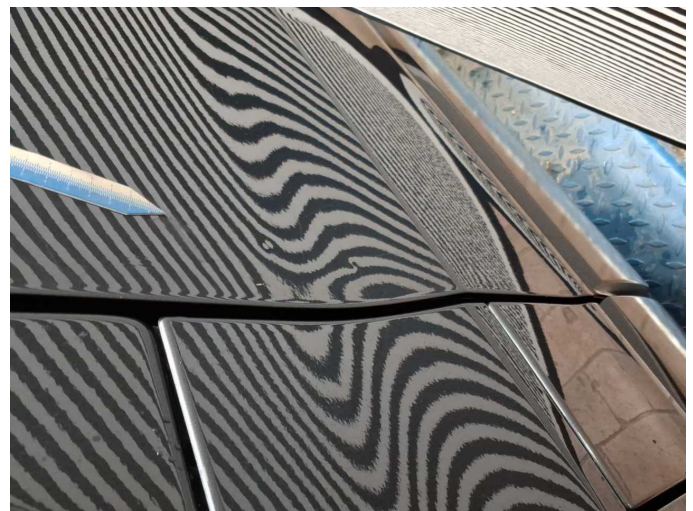
**Damage 5:** Door - front left side: Door - Scratch(es) - Paint



**Damage 5:** Door - front left side: Door - Scratch(es) - Paint



**Damage 6:** Door - rear left side: Door (Und kratzer) - dent(s) - Repair and paint



**Damage 6:** Door - rear left side: Door (Und kratzer) - dent(s) - Repair and paint



**Damage 6:** Door - rear left side: Door (Und kratzer) - dent(s) - Repair and paint



**Damage 6:** Door - rear left side: Door (Und kratzer) - dent(s) - Repair and paint



**Damage 6:** Door - rear left side: Door (Und kratzer) - dent(s) - Repair and paint



**Wear and tear 1:** Wing mirror - right side: Cap - Scratch(es) - No deduction



**Wear and tear 1:** Wing mirror - right side: Cap - Scratch(es) - No deduction