

Expertise

Protocol number: 46114796
Order No. / Reference: 26541759
Inspection date: 24 Jun 2026

Manufacturer: Skoda

Model: Octavia Combi 2.0 TDI DSG Sportline

VIN: TMBJJ8NX5PY038633



Vehicle details

Manufacturer / Type / Model / Equipment

Skoda Octavia Combi 2.0 TDI DSG Sportline

Vehicle Identification number	TMBJJ8NX5PY038633
Mileage (Read)	167,424 km
First registration	18 Jan 2023
Number of holders	1
Next periodical technical inspection (Report on hand)	05/2028

Power / Engine displacement	110 kw / 1,968 ccm
------------------------------------	--------------------

Fuel type / Cylinder	Diesel / 4
-----------------------------	------------

Gearbox / Number of gears	Automatic / 7
----------------------------------	---------------

Type of drive	Front drive
----------------------	-------------

Type of vehicle	Station wagon
------------------------	---------------

Colour / colour code	Black Magic Pearlescent (F9R)
-----------------------------	----------------------------------

Doors / Seats	5 / 5
----------------------	-------

Upholstery type	Cloth
------------------------	-------

Colour of upholstery	Black
-----------------------------	-------

Re-import	no
------------------	----

readiness to drive	Roadworthy
---------------------------	------------



Vehicle details			
Maintenance booklet / proof	digital proof / complete	Next maintenance in	26,800 km
Last service on / at	05/2026 at 164,586 km		
Key is / should be	2 / 2	FZG documents	ZB#2 (B) was available (copy), ZB#1 (S) was not available.
		Letter No.	GN458149
Previous damage / Accident	Detectable	Repainting	Detectable
Inspection conditions	sufficient	Lifting equipment / pit	yes
Test drive	Not performed	Engine function test	Performed
readiness to drive	Roadworthy		
Manufacturer key number/ type code number	8004 / AWL 00273		
Emission standard	EURO6;WLTP;AP;PI/CI; M, N1 I	fine dust sticker	
Permitted total weight	1,990 kg	Empty weight	

Tyres

Mounted tyres				
#	Tyre size	Type of tyre	Manufacturer	Tread depth
1)	205/60 R16 92H	Winter tyres on Light alloy	Goodyear	3mm / 2mm
2)	205/60 R16 92H	Winter tyres on Light alloy	Goodyear	5mm / 5mm

Additional tyres				
#	Tyre size	Type of tyre	Manufacturer	Tread depth
1)	225/45 R18 91Y	Summer tyres on Light alloy	Goodyear	4mm / 4mm
2)	225/45 R18 91Y	Summer tyres on Light alloy	Goodyear	5mm / 5mm

Replacement				
Typ	Tyre size	Type of tyre	Manufacturer	Tread depth
E	205/60 R16 92V	Summer tyres on Steel	Hankook	6 mm

Legend: Tread depth information for the left tire is listed first, for the right tire it is listed second on the axle in the direction of travel.

TÜV SÜD Auto Partner GmbH
Wiesenring 2
04159 Leipzig

Inspection location
Mosolf SE & Co.KG
August-Horch-Straße 1
04519 Rackwitz



Equipment



Standard equipment

- Storage compartment in the luggage compartment with cargo element
- Airbag, driver's knee airbag
- Airbag, front side airbags
- Ambient lighting
- Anti-lock braking system (ABS)
- Automatically dimming exterior mirror (driver's side)
- Electrically folding exterior mirrors
- Hill start assist
- Hydraulic brake assist (HBA)
- black headliner
- Decorative trim in piano black
- Digital Cockpit Plus
- Third brake light
- Electronic transverse differential lock (XDS+)
- Driving profile selection
- Front radar assistant including city emergency braking function and pedestrian and cyclist detection
- Transmission: 7-speed dual-clutch transmission (DSG)
- Green tec: Start/stop system including brake energy recuperation
- Interior mirror automatically dimming
- Kessy, keyless entry and start-stop system
- Child safety lock for the rear doors and windows
- Removable boot cover
- LED fog lights
- LED license plate lights
- LED headlights with LED daytime running lights
- Steering wheel: height and reach adjustable
- Manual headlight range adjustment
- Rear center armrest with pass-through option
- Engine drag torque control (MSR)
- Front and rear parking sensors
- Upholstery: Fabric and Thermoflux with Sport interior
- Radio: Bolero music system with 10" display
- Radio accessories: 2 x USB charging ports (Type-C) in the rear and USB charging port (Type-C) in the rearview mirror
- Radio accessories: Digital radio reception DAB+
- Radio accessories: Voice control
- Tire pressure monitoring
- Wheels: 18" Vega AERO alloy wheels, black gloss-turned
- Seat belts
- Seats: Electrically adjustable front seats with memory function
- Seats: Sports seats with integrated headrests in the front and height-adjustable headrests in the rear.
- Lane keeping assistant (Lane Assist)
- Sunset (rear window and rear side windows tinted dark)
- Phone: Wireless SmartLink for Apple CarPlay
- Textile floor mats
- Lashing eyes in the trunk
- Storage compartments
- Airbag, driver and passenger
- Airbag, head airbags
- Airbag: Center airbag front
- Trailer hitch preparation including trailer stabilization
- Traction control (ASR)
- Electrically adjustable and heated exterior mirrors
- Heated windshield washer nozzles including 5l washer fluid reservoir
- Glasses compartment in the headliner
- AERO roof rails in black
- Diesel particulate filter
- Tachometer
- Electronic parking brake including auto-hold function
- Electronic Stability Control (ESC)
- Electric windows front and rear, including anti-pinch protection and child safety lock
- Cruise control system
- Tinted windows
- Heated rear window
- Rear window wiper including windshield washer system
- ISOFIX preparations on the front passenger seat and the outer rear seats including top tether anchorage
- Climatronic air conditioning (2-zone)
- Paint finish: Solid
- LED taillights in crystal glass look and animated turn signals
- Remote release of the rear seat backrests in the trunk
- Steering wheel: Leather steering wheel in sporty design with multifunction buttons including paddle shifters.
- Front center armrest, including storage compartment
- Fatigue detection
- Pedals in stainless steel look
- Progressive steering
- Radio accessories: 2 USB-C ports on the front
- Radio accessories: 8 speakers
- Radio accessories: Bluetooth hands-free system
- Radio accessories: SmartLink
- Rain sensor and driving light assistant
- Tire mobility kit
- Electromechanical power steering
- Seats: Heated front seats
- Seats: Height-adjustable driver and passenger seats
- Seats: Rear seat backrest split 60:40, foldable
- SKODA Care Connect
- Speed limiter
- 12V socket in the trunk
- Telephone: Phonebox with inductive charging function (connection via external antenna)
- Front door sill trims
- Immobiliser



- Central locking including remote control integrated into the key and EASY Start

Extra equipment

- Luggage net partition
- Package: Infotainment package Business Columbus (Sportline) DSG (Columbus navigation system - Infotainment Online (3-year term), online map updates: for navigation, traffic situation, petrol stations and parking space search - Head-Up Display - Adaptive Cruise Control (ACC) - Traveller Assist system: - Traffic sign recognition - Adaptive Lane Keeping Assist - Emergency and traffic jam assist - Capacitate steering wheel with Hands Off Detection)
- Paint finish: Pearl effect
- Package: Comfort (RS, Sportline) (3-zone Climatronic - Acoustic glazing in the front side windows - Heated front and outer rear seats - Heated steering wheel)
- Package: Lights (cornering lights in the fog lights - headlight cleaning system - high beam assist - LED ambient lighting)
- Wheels: Steel spare wheel 16" (with tires 205/55 R16 including jack and wheel wrench)

Brief expert findings

Documents submitted	At the time of the inspection, the vehicle registration certificate Part 2 (title) was available, but the vehicle registration certificate Part 1 (document) was not. (Copy)
VIN comparison	The vehicle identification number (VIN) was read from the vehicle and its conformity with the submitted documents was confirmed by the undersigned during the inspection.
Inspection	The inspection conditions were sufficient for the assessment of the vehicle. Lifting equipment and/or a pit were available for examining the vehicle.
Test drive	No test drive/shunting maneuver was carried out during the inspection of the vehicle.
Engine function test	An engine test run was performed.
readiness to drive	The vehicle was roadworthy at the time of inspection.

Value reducing factors

No.	Component group	Description
1	Door - rear left side	Door handle - outside - Scratched - Smart repair
2	Roof	Roof - dent(s) - Smart repair
3	Trim / covers	Door trim - rear right side - Scratch(es) - Loss in value
4	Front bumper	Front bumper - Scratch(es) - Smart repair
5	Door - front left side	Door - Scratch(es) - Smart repair
6	Front bumper	Spoiler - Scratch(es) - Smart repair
7	Bonnet	Bonnet - Dent / paintcoat damage - Smart repair
8	2nd wheel set	1 alloy rim - Scratched - Replace
9	Side panel - rear left side	Side panel - Scratched - Repair and paint
10	Boot lid / rear door	Boot lid - Scratch(es) - Repair and paint
11	Door - front right side	Door - Scratch(es) - Repair and paint
12	Door - rear right side	Door - Scratch(es) - Repair and paint
13	Rear bumper	Rear bumper - Scratch(es) - Repair and paint

Wear and tear

No.	Component group	Description
1	Wheel / tyres	Tyre - front - Does not meet the leasing specifications - No deduction
2	Wheel / tyres	Alloy rim - rear right side - Scratched - No deduction
3	Wheel / tyres	Alloy rim - front right side - Scratched - No deduction

The vehicle shows signs of wear and tear commensurate with its age and use.



Previous damages

No.	Previous damage	Extent of damage (Net)
1	Rear, Side - left, Provided by user / customer, from 7 Nov 2023	6.273,23 €

Repainting

No.	Repainting
1	Side panel - rear left side, Door - front left side, Professionally carried out

Paint coat thickness measurement

Roof rail - left side	138 µm	Side panel - rear left side	3,050 µm
Door - front left side	203 µm		

Order/Scope of Order

An order was placed to prepare a sales report for the described vehicle. This report includes the following:

- Description of key vehicle information
- Documentation of equipment features
(Delivery by third-party service providers)
- Documentation of damage, defects, missing parts
- Documentation of prior damage, unrepaired prior damage, repainting
- A brief visual or functional inspection of the equipment details, if possible.
(Functional testing of driver assistance systems is not included in the scope of services!)
- a photographic documentation of the vehicle

Basis for the order

This product is based on the guidelines for vehicle returns and valuations published by Alphabet Fleet GmbH. The expert makes the specific findings in each individual case objectively, within the framework of the prescribed standards, based on their own expertise.

The vehicle inspection takes place in a fully assembled, unassembled state.

Damage or defects that can only be detected during disassembly/diagnostic work or through further investigation remain within the realm of prognostic risk. An increased risk exists due to concealed defects caused by fraudulent misrepresentation and which were not identifiable by the expert.

Damage or defects resulting from normal use or wear and tear of the vehicle will be accepted in accordance with the applicable standard.

There was no explicit identification or monetary consideration of the expected features within the product.

Features which, in their nature and extent, slightly exceed normal use but do not constitute unacceptable damage, will be documented and indicated as signs of wear, if applicable.

Damage or defects that, according to the applicable standard, can no longer be attributed to normal use or wear and tear are listed under "Value Reducing Factors" in the product description.

Depending on the product specification, a monetary ID can be provided. If this takes place, the costs can be 100% d or pro rata depending on the vehicle's age and mileage.

Previous damages

According to available information previous damages were repaired at the vehicle. Traces of repairs, which allow conclusions about the area of repair, were not recognizable during the inspection.



Comments

- Für den montierten Radsatz wurde kein Nachweis erbracht.
- Winterradsatz ist kein Bestandteil des Auslieferungsumfangs.



Figure 1: Diagonal front (left)



Figure 2: Diagonal front (right)



Figure 3: Diagonal rear (left)



Figure 4: Diagonal rear (right)



Figure 5: Interior - front



Figure 6: Interior - rear



Figure 7: Instrument cluster



Figure 8: Instrument panel

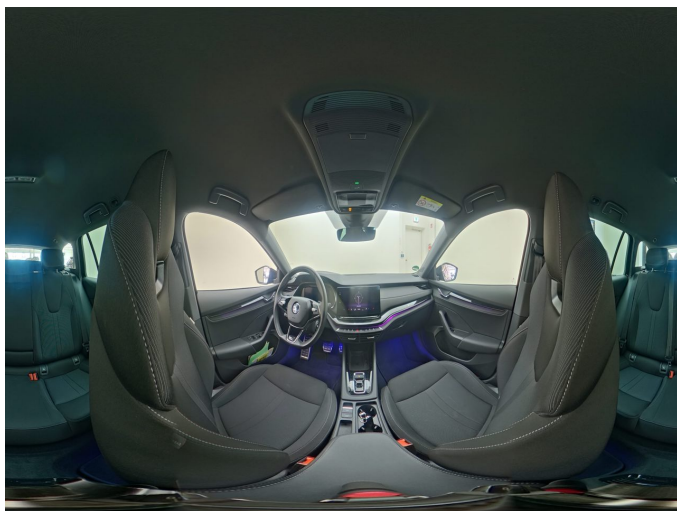


Figure 9: Interior 360° view

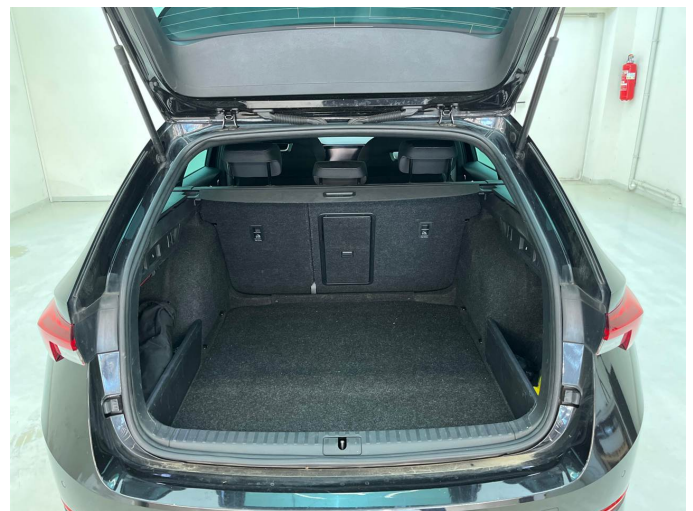


Figure 10: Cargo area



Figure 11: VIN



Figure 12: Mounted tyres



Figure 13: Documents



Figure 14: Documents

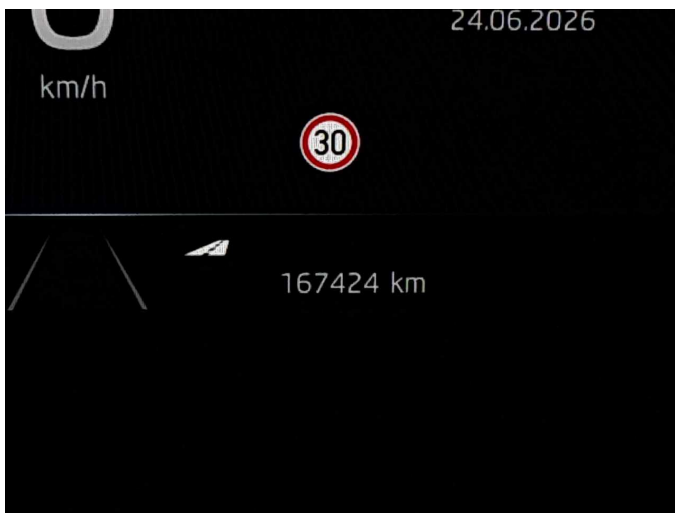


Figure 15: Documents



Figure 16: Documents

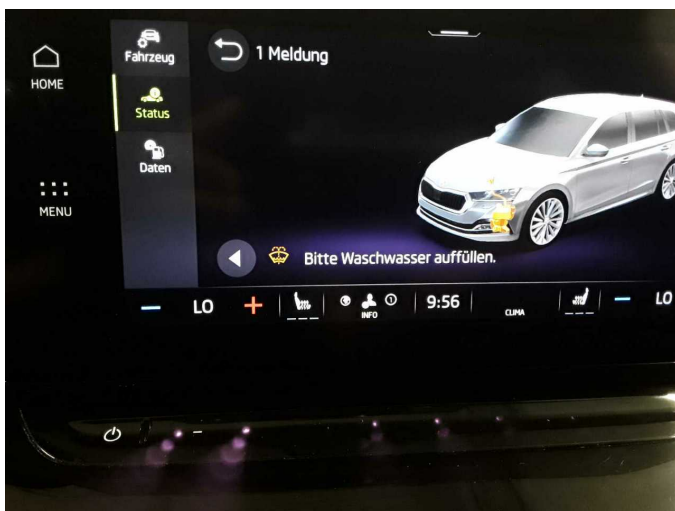


Figure 17: Documents



Figure 18: Documents



Figure 19: Additional tyres

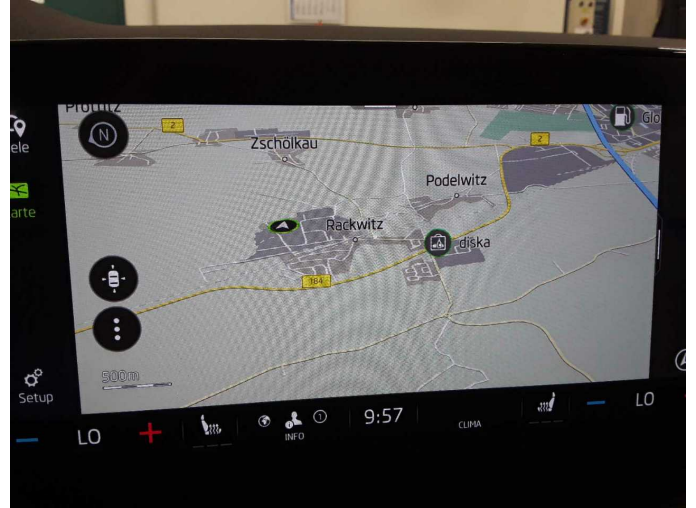


Figure 20: Navigation



Figure 21: Misc.



Figure 22: Misc.



Figure 23: Misc.



Figure 24: Misc.



Figure 25: Misc.



Figure 26: Misc.

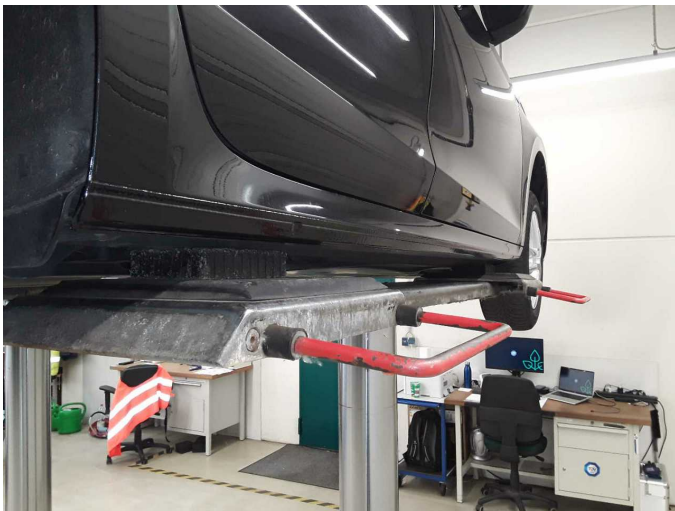


Figure 27: Misc.



Figure 28: Misc.



Figure 29: Misc.



Damage 1: Door - rear left side: Door handle - outside - Scratched - Smart repair



Damage 1: Door - rear left side: Door handle - outside - Scratched - Smart repair



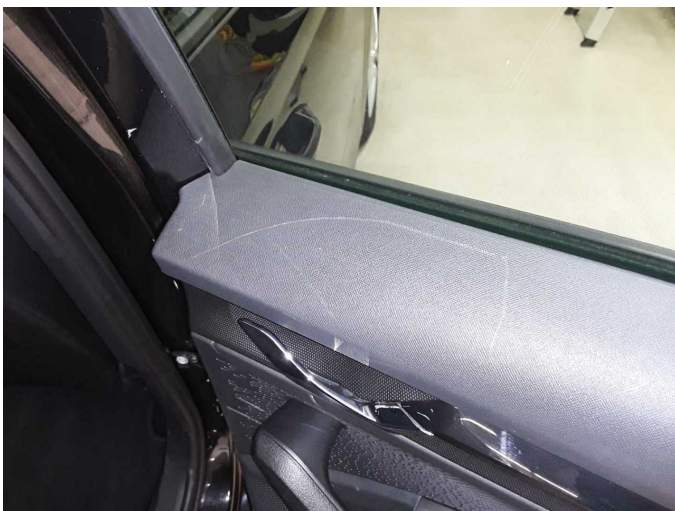
Damage 2: Roof: Roof - dent(s) - Smart repair



Damage 2: Roof: Roof - dent(s) - Smart repair



Damage 3: Trim / covers: Door trim - rear right side - Scratch(es) - Loss in value



Damage 3: Trim / covers: Door trim - rear right side - Scratch(es) - Loss in value



Damage 3: Trim / covers: Door trim - rear right side - Scratch(es) - Loss in value



Damage 4: Front bumper: Front bumper - Scratch(es) - Smart repair



Damage 4: Front bumper: Front bumper - Scratch(es) - Smart repair



Damage 5: Door - front left side: Door - Scratch(es) - Smart repair



Damage 5: Door - front left side: Door - Scratch(es) - Smart repair



Damage 5: Door - front left side: Door - Scratch(es) - Smart repair



Damage 6: Front bumper: Spoiler - Scratch(es) - Smart repair



Damage 6: Front bumper: Spoiler - Scratch(es) - Smart repair



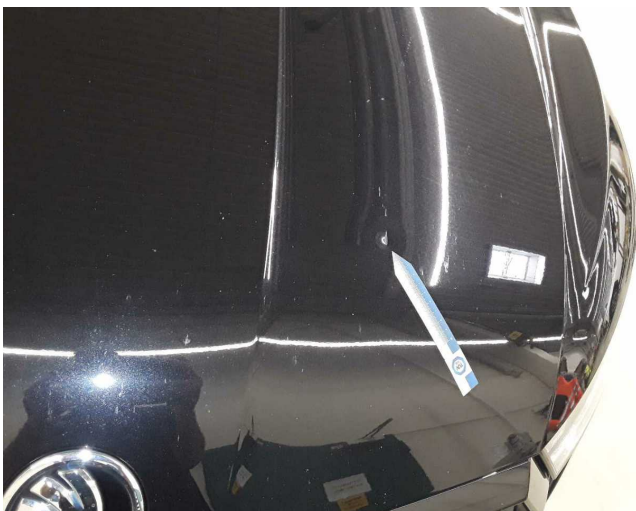
Damage 6: Front bumper: Spoiler - Scratch(es) - Smart repair



Damage 7: Bonnet: Bonnet - Dent / paintcoat damage - Smart repair



Damage 7: Bonnet: Bonnet - Dent / paintcoat damage - Smart repair



Damage 7: Bonnet: Bonnet - Dent / paintcoat damage - Smart repair



Damage 8: 2nd wheel set: 1 alloy rim - Scratched - Replace



Damage 8: 2nd wheel set: 1 alloy rim - Scratched - Replace



Damage 8: 2nd wheel set: 1 alloy rim - Scratched - Replace



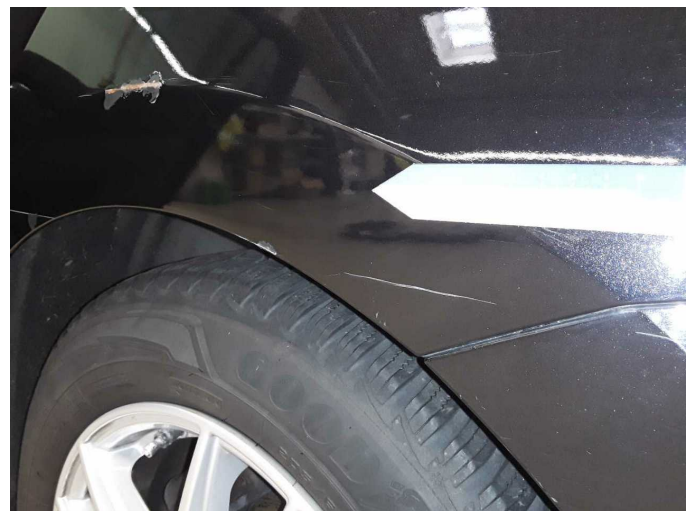
Damage 8: 2nd wheel set: 1 alloy rim - Scratched - Replace



Damage 9: Side panel - rear left side: Side panel - Scratched - Repair and paint



Damage 9: Side panel - rear left side: Side panel - Scratched - Repair and paint



Damage 9: Side panel - rear left side: Side panel - Scratched - Repair and paint



Damage 9: Side panel - rear left side: Side panel - Scratched - Repair and paint



Damage 10: Boot lid / rear door: Boot lid - Scratch(es) - Repair and paint



Damage 10: Boot lid / rear door: Boot lid - Scratch(es) - Repair and paint



Damage 10: Boot lid / rear door: Boot lid - Scratch(es) - Repair and paint



Damage 10: Boot lid / rear door: Boot lid - Scratch(es) - Repair and paint



Damage 10: Boot lid / rear door: Boot lid - Scratch(es) - Repair and paint



Damage 11: Door - front right side: Door - Scratch(es) - Repair and paint



Damage 11: Door - front right side: Door - Scratch(es) - Repair and paint



Damage 12: Door - rear right side: Door - Scratch(es) - Repair and paint



Damage 12: Door - rear right side: Door - Scratch(es) - Repair and paint



Damage 12: Door - rear right side: Door - Scratch(es) - Repair and paint



Damage 12: Door - rear right side: Door - Scratch(es) - Repair and paint



Damage 12: Door - rear right side: Door - Scratch(es) - Repair and paint



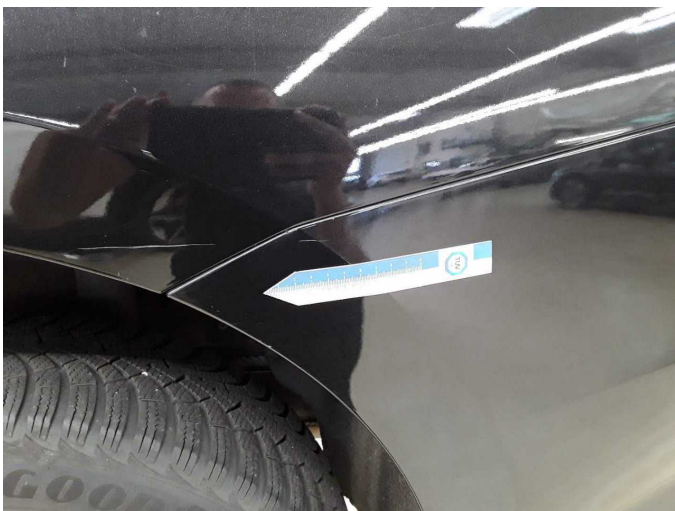
Damage 13: Rear bumper: Rear bumper - Scratch(es) - Repair and paint



Damage 13: Rear bumper: Rear bumper - Scratch(es) - Repair and paint



Damage 13: Rear bumper: Rear bumper - Scratch(es) - Repair and paint



Damage 13: Rear bumper: Rear bumper - Scratch(es) - Repair and paint



Damage 13: Rear bumper: Rear bumper - Scratch(es) - Repair and paint



Damage 13: Rear bumper: Rear bumper - Scratch(es) - Repair and paint



Wear and tear 2: Wheel / tyres: Alloy rim - rear right side - Scratched - No deduction



Wear and tear 3: Wheel / tyres: Alloy rim - front right side - Scratched - No deduction



Side panel - rear left side: 3,050 μm



Side panel - rear left side: 3,050 μm



Door - front left side: 203 μm



Door - front left side: 203 µm



Wartungshistorie

(gemäß Auftraggeber Informationen)

Fahrgestellnummer: TMBJJ8NX5PY038633
Hersteller / Modell: SKODA SKODA Octavia Combi 2.0 TDI DSG Sportline

Datum	KM-Stand	Beschreibung
08.05.2026	164.586	AU; Motoröl b. Wartung; Ölfilter ern; Regelwartungsdienst; Wartung Sonstiges
20.10.2025	136.107	Getriebeöl ern/prüfen; Motoröl b. Wartung; Ölfilter ern; Regelwartungsdienst; Wartung Sonstiges
05.03.2025	106.578	Bremse Sonstiges; Bremsflüssigkeit; Bremsflüssigkeit ern; Bremsklötze hinten; Bremsklötze vorne; Bremsscheiben hinten; Bremsscheiben vorne; Kraftstofffilter ern; Luftfiltereinsatz ern; Motoröl b. Wartung; Ölfilter ern; Regelwartungsdienst; Systemtest/Eigendiagnose; Wartung Sonstiges
20.09.2024	71.731	Motoröl b. Wartung; Ölfilter ern; Regelwartungsdienst; Wartung Sonstiges
17.01.2024	32.525	Motoröl b. Wartung; Ölfilter ern; Regelwartungsdienst; Wartung Sonstiges