

Expertise

Protocol number: 45863835
Order No. / Reference: 26120975
Inspection date: 10 Jun 2026

Manufacturer: Audi

Model: A4 Avant 35 TDI S tronic advanced

VIN: WAUZZZF43RA032117



Vehicle details

Manufacturer / Type / Model / Equipment

Audi A4 Avant 35 TDI S tronic advanced

Vehicle Identification number WAUZZZF43RA032117

Mileage (Read) 101,453 km

First registration 14 Dec 2023

Number of holders 1

Next periodical technical inspection 12/2026
(Report not on hand)

Power / Engine displacement 120 kw / 1,968 ccm

Fuel type / Cylinder Hybrid Diesel / E / 4

Gearbox / Number of gears Automatic / 7

Type of drive Front drive

Type of vehicle Station wagon

Colour / colour code Brillantschwarz

Doors / Seats 5 / 5

Upholstery type Cloth

Colour of upholstery Black-Anthracite

Re-import no

Vehicle with smoke odor no

readiness to drive Roadworthy



Vehicle details

Maintenance booklet / proof	Non-existent	Next maintenance in	30 Tag(e)
Key is / should be	2 / 2	FZG documents	ZB#2 (B) was available (copy), ZB#1 (S) was not available.
		Letter No.	GY342967
Previous damage / Accident	None detectable	Repainting	None detectable
Inspection conditions	sufficient	Lifting equipment / pit	yes
Test drive	Not performed	Engine function test	Performed
readiness to drive	Roadworthy		
Manufacturer key number/ type code number	0588 / BPK 01173		
Emission standard	EURO6;WLTP;AP;PI/CI; M, N1 I	fine dust sticker	
Permitted total weight	2,165 kg	Empty weight	

Tyres

Mounted tyres

#	Tyre size	Type of tyre	Manufacturer	Tread depth
1)	225/50 R17 94H	Winter tyres on Light alloy	Michelin	5mm / 5mm
2)	225/50 R17 94H	Winter tyres on Light alloy	Michelin	5mm / 5mm

Additional tyres

#	Tyre size	Type of tyre	Manufacturer	Tread depth
1)	225/50 R17 94H	Summer tyres (Without wheel rim)	Continental	6mm / 6mm
2)	225/50 R17 94H	Summer tyres (Without wheel rim)	Continental	6mm / 6mm

Replacement

Typ	Tyre size	Type of tyre	Manufacturer	Tread depth
N	125/70 R19 100M	Summer tyres on Steel	Sonstige	4 mm

Legend: Tread depth information for the left tire is listed first, for the right tire it is listed second on the axle in the direction of travel.

TÜV SÜD Auto Partner GmbH
Wiesenring 2
04159 Leipzig

Inspection location
Mosolf SE & Co.KG
Faberweg 25
73230 Kirchheim unter Teck



Equipment



Standard equipment

- AdBlue tank (12 liters) (tank for AdBlue solution for reducing nitrogen oxides in the exhaust gas using an SCR system)
- Airbag: Front side airbags and head airbag system
- Anti-lock braking system (ABS) (with electronic brake force distribution (EBD) and brake assist)
- Audi connect Emergency Call & Service with Audi connect Remote & Control (Audi connect Emergency Call: - Online breakdown call - Audi damage service - Audi service appointment online - Online Car Care Audi connect Remote & Control: - Parking position - Vehicle status - Remote locking and unlocking - Remote control of auxiliary heating - Anti-theft alarm notification)
- Exterior mirror housings in body color
- On-board tools (in the luggage compartment)
- third brake light, raised
- Black roof rails (for transport, stable and aerodynamically shaped, in aluminum)
- Diesel particulate filter (DPF)
- Parking aid plus (Using data from the ultrasonic sensors integrated into the bumpers, the acoustic and optical parking aid at the front and rear assists with parking, maneuvering, and exiting parking spaces. Depending on the steering angle and direction of travel, the distance to detected objects is displayed in a selective, optical representation on the MMI touch display.)
- Driver information system with color display (high-resolution 7-inch color display on the instrument panel; display content: - Speed (digital speedometer) - Time - Odometer reading - Outside temperature - Fuel warning with remaining range - Shift recommendation in manual mode - Current radio station or music track - Radio and media lists - Telephone menu - Navigation information - Driver assistance system alerts - Fuel consumption data overviews - Fuel-saving tips for more economical driving - Break recommendation)
- Cruise control with speed limiter (assists in maintaining a speed of approximately 20 km/h or higher, provided engine and braking power allow. The speed limiter helps to prevent exceeding a speed of approximately 30 km/h. The system limits the speed even when the accelerator pedal is depressed. It is operated via a separate steering column stalk. The set speed is displayed in the driver information system.)
- Interior mirror dimming
- Child lock
- ISOFIX and Top Tether child seat attachment for the outer rear seats (holding device for the practical attachment of ISOFIX child seats with an additional upper attachment point (Top Tether) on the outer rear seats)
- Airbag: Front airbags, passenger airbag deactivatable (adaptive driver and passenger airbags - front knee airbags - deactivation switch for the passenger side)
- Accent surfaces in matte black (for dashboard, trim panels in door sills and center console insert)
- Traction control (ASR)
- Audi pre sense city (can detect vehicles and pedestrians within system limits at speeds up to approximately 85 km/h. If an impending collision is detected, the system warns the driver visually, audibly, and, if necessary, with a braking jolt, and can initiate full deceleration if required to reduce speed or, if necessary, avoid the collision.)
- Electrically adjustable and heated exterior mirrors (with integrated LED turn signals, including heated windshield washer nozzles)
- Headliner in fabric (depending on the chosen interior color, either titanium grey or atlas beige)
- Decorative inlays diamond lacquer silver grey
- Tachometer
- Door sill trims with aluminum inlay at the front
- Electromechanical parking brake (includes parking brake function when stationary, starting aid by automatic release when starting and full deceleration while driving via all 4 wheels)
- Electronic Differential Lock (EDS)
- Electronic Stability Control (ESC)
- Chassis: Standard chassis (for good driving dynamics with very good ride comfort; shock absorbers and coil springs on front and rear axles)
- Electric windows (front and rear)
- Window channel strips in black (rubber)
- Remote key, without SafeLock (locks and unlocks doors, luggage compartment and fuel filler flap - including Keyless-Go - including comfort closing/opening of windows)
- Front and rear floor mats (made of velour in black)
- Transmission: S tronic 7-speed
- rear window wiper
- Top speed limited to 210 km/h
- Interior lighting (front and rear roof module including reading lights - capacitively operated at the front, ambient light on center console, glove box light, passive door warning lights, trunk light on the left, additionally on the right for the A4 Avant/S4 Avant, and tailgate lighting)
- Camera-based traffic sign recognition (Camera-based traffic sign recognition assists with driving by displaying traffic signs detected within the system's limits, such as speed limits, no-overtaking zones, and temporary speed restrictions. If a traffic sign is outside the camera's field of view, it can be retrieved from the information stored in the navigation data of the optional MMI Navigation plus with MMI touch, which must be ordered separately.)
- boot floor mat
- Headrests (5) (height adjustable front and rear)



- Automatic climate control (single-zone automatic climate control - electronically regulates air temperature, volume and distribution, sun position-dependent control - air distribution can be set using 5 main positions - the 3 LEDs integrated into the seat heating and seat ventilation buttons provide feedback on the selected setting (optional) - buttons for defrosting the front and rear windows - manual recirculation control and particle filter - with key recognition and humidity sensor)
- Steering wheel: Leather steering wheel in a 3-spoke design with multifunction controls (height and reach of the steering wheel are manually adjustable. For convenient operation of the extensive standard and optional infotainment features, the steering wheel is equipped with 6 multifunction buttons.)
- Mild hybrid (Mild hybrid features an enhanced start-stop function, extended energy recuperation during braking to charge the starter battery, and additional lithium-ion storage. This allows the system to recover more energy and switch off the engine more frequently. A supplementary belt-driven starter generator (BSG) is conceptually included for mild hybrid systems. Purely electric driving is not possible.)
- Radio: MMI Radio plus (10.1-inch color display (1,540 x 720) including MMI touch operation - Driver information system with 7-inch color display - Audi music interface with one USB-A and one USB-C port, each with data and charging function - Bluetooth interface (hands-free calling and audio streaming) - 8 passive speakers with 4 speakers in the front and 4 in the rear (100 watts) - DAB+ digital radio reception - AM/FM phase diversity - speed-dependent volume adjustment - voice control system - WLAN hardware)
- Electromechanical power steering (maintenance-free rack and pinion steering with speed-dependent steering assistance; precise steering feel at high speeds, excellent support when parking.)
- Seats: Standard front seats (with manual adjustment of seat height, seat longitudinal position, backrest angle, headrest height and seat belt height)
- Seats: Front seats manually adjustable
- Lane Departure Warning (within system limits, helps prevent unintentional lane departures. If the system is activated and ready, and the driver has not used the turn signal, the Lane Departure Warning helps prevent crossing detected lane markings by making corrective steering interventions. Additional steering wheel vibration can be set at the driver's request. Operating range from approximately 60 to a maximum of 250 km/h)
- First aid kit with warning triangle (warning triangle in the trunk - first aid kit in the trunk - 2 high-visibility vests in the door pockets)
- Electronic immobilizer
- Central locking "Keyless-Go" without safe locking (keyless engine start)
- Loading floor (one side in high-quality velour, the other as a waterproof, durable dirt tray)
- Manual cargo cover
- LED taillights (taillights using LED technology impress with faster activation of the taillights and brake lights, thus enabling earlier detection by following traffic. The light signature is a visible recognition signal to the rear.)
- Steering column, manually adjustable in height and axis
- Light/rain sensor (for controlling the automatic headlight switching, the coming home/leaving home function and the automatic windshield wiper function)
- front center armrest
- Non-smoking version (one 12-volt socket each in the front in front of the cup holders and in the rear for the 2nd row of seats - no cigarette lighter)
- Wheel: Alloy wheels, 5-arm dynamic (size 7.5J x 17 with tires 225/50 R17)
- Wheel: Low rolling resistance tires, speed-limited (maximum permissible speed 210 km/h)
- Tire pressure monitoring system (visual and audible warning in case of pressure loss in one or more wheels, display in the driver information system)
- Tire repair kit (compressor and tire sealant, maximum permissible speed 80 km/h)
- Headlights in LED technology (low beam, high beam, daytime running light and position light in LED, turn signal in incandescent bulb technology, with all-weather light - create a daylight-like illumination of the road and impress with low energy consumption, long service life and good visibility to others)
- Seat covers in Index fabric (seat center panels in Index fabric black or rock grey - seat side bolsters, headrests, center armrest in solid black or rock grey fabric)
- Seats: Folding rear seat backrest (split in a 40:20:40 ratio or fully foldable - center armrest - including lashing eyes, 4 in the luggage compartment, for securing luggage and objects - attachment points for the luggage compartment net, with removable partition net; to be attached to the body or to the folded rear seat backrest; helpful whether the rear seat backrest is upright, folded down on one side, or folded down on both sides)
- Start-stop system (helps reduce fuel consumption and CO2 emissions by switching off the engine during stationary phases, e.g. at traffic lights. For restarting, the starting process is initiated as soon as the foot brake is released. Can be deactivated at any time via a button.)
- Glazing: Windscreen in heat-insulating and acoustic glazing (windscreen in heat-insulating glazing, green tinted - improved external noise insulation)



Extra equipment

- On-board tools and jack (in the luggage compartment)
- LED matrix headlights, LED taillights and headlight cleaning system (Matrix LED technology combines a camera system with LED light sources and precise optics for highly adaptive light distribution. In addition to the matrix LED function, the headlights offer the following features: - visually enhanced daytime running lights - low beam - high beam - position lights - dynamic turn signals - cornering lights - all-weather lights - static cornering lights - motorway lights - automatic dynamic headlight range control - coming home/leaving home function)
- Parking assistant with parking aid plus (Within the detection range of the ultrasonic sensors, the parking assistant helps find a suitable parking space along the road. For perpendicular parking spaces, the parking path is calculated; for parallel parking spaces, the entry and exit paths are calculated. The system assists with targeted steering maneuvers during parking and exiting. The driver only needs to follow the instructions on the display to change gears, accelerate, brake, and fully monitor the parking process. Activation button in the center console)
- Glazing: Sun protection glazing, tinted (rear window, rear door and side windows tinted)
- Electrically operated tailgate (The tailgate can be opened electrically by pressing the button on the vehicle key, in the driver's door, or the soft-touch button on the tailgate handle. Closing the tailgate is just as easy and convenient: simply press the button on the inside of the tailgate, the button in the driver's door, or the button on the vehicle key. A soft-close mechanism makes manual closing easier when necessary.)
- Business package (MMI Navigation plus with MMI touch - Audi phone box - 3-spoke leather steering wheel with multifunction plus - Heated front seats - Frameless, automatically dimming interior mirror - Electrically adjustable, heated and folding exterior mirrors, automatically dimming on both sides - High-beam assistant - Manual sunshade for rear door windows)
- Wheel: Spare wheel, space-saving
- Reversing camera (facilitates maneuvering by displaying the area behind the vehicle on the MMI display with dynamic and static aids. Two modes can be selected: perpendicular parking and, for vehicles with factory-installed trailer hitches, trailer mode. Depending on the selected mode, the calculated lane and guide lines are displayed. The reversing camera is discreetly integrated into the tailgate handle. Activation occurs when reverse gear is engaged.)

Brief expert findings

Documents submitted	At the time of the inspection, the vehicle registration certificate Part 2 (title) was available, but the vehicle registration certificate Part 1 (document) was not. (Copy)
VIN comparison	The vehicle identification number (VIN) was read from the vehicle and its conformity with the submitted documents was confirmed by the undersigned during the inspection.
Inspection	The inspection conditions were sufficient for the assessment of the vehicle. Lifting equipment and/or a pit were available for examining the vehicle.
Test drive	No test drive/shunting maneuver was carried out during the inspection of the vehicle.
Engine function test	An engine test run was performed.
readiness to drive	The vehicle was roadworthy at the time of inspection.

Value reducing factors

No.	Component group	Description
1	Wheel / tyres	Tyres - complete set - Differs from the original configuration - No deduction
2	Door - rear right side	Door - dent(s) - Smart repair
3	Door - rear left side	Door - Scratch(es) - Smart repair
4	Front bumper	Front bumper - Scratch(es) - Smart repair
5	Braking system	Brake discs - front - Corrosion - Replace



Wear and tear

No.	Component group	Description
1	Misc.	Inspection / maintenance - No evidence - No deduction
2	Bonnet	Bonnet - Stone chips - No deduction
3	Vehicle glazing	Windscreen - Stone chips - No deduction
4	Body	Body - Scratch(es) - No deduction
5	Door - front left side	Door edge - Scratch(es) - No deduction

The vehicle shows signs of wear and tear commensurate with its age and use.

Order/Scope of Order

An order was placed to prepare a sales report for the described vehicle. This report includes the following:

- Description of key vehicle information
- Documentation of equipment features
(*Delivery by third-party service providers*)
- Documentation of damage, defects, missing parts
- Documentation of prior damage, unrepaired prior damage, repainting
- A brief visual or functional inspection of the equipment details, if possible.
(*Functional testing of driver assistance systems is not included in the scope of services!*)
- a photographic documentation of the vehicle

Basis for the order

This product is based on the guidelines for vehicle returns and valuations published by Alphabet Fleet GmbH. The expert makes the specific findings in each individual case objectively, within the framework of the prescribed standards, based on their own expertise.

The vehicle inspection takes place in a fully assembled, unassembled state.

Damage or defects that can only be detected during disassembly/diagnostic work or through further investigation remain within the realm of prognostic risk. An increased risk exists due to concealed defects caused by fraudulent misrepresentation and which were not identifiable by the expert.

Damage or defects resulting from normal use or wear and tear of the vehicle will be accepted in accordance with the applicable standard.

There was no explicit identification or monetary consideration of the expected features within the product.

Features which, in their nature and extent, slightly exceed normal use but do not constitute unacceptable damage, will be documented and indicated as signs of wear, if applicable.

Damage or defects that, according to the applicable standard, can no longer be attributed to normal use or wear and tear are listed under "Value Reducing Factors" in the product description.

Depending on the product specification, a monetary ID can be provided. If this takes place, the costs can be 100% d or pro rata depending on the vehicle's age and mileage.

Previous damages

No apparent prior damage that had been repaired could be found on the vehicle.

Comments

- Winterreifensatz ist kein Bestandteil des Auslieferungsumfangs.



Figure 1: Diagonal front (left)



Figure 2: Diagonal front (right)



Figure 3: Diagonal rear (left)



Figure 4: Diagonal rear (right)



Figure 5: Interior - front



Figure 6: Interior - rear



Figure 7: Instrument cluster



Figure 8: Instrument panel



Figure 9: Interior 360° view



Figure 10: Cargo area

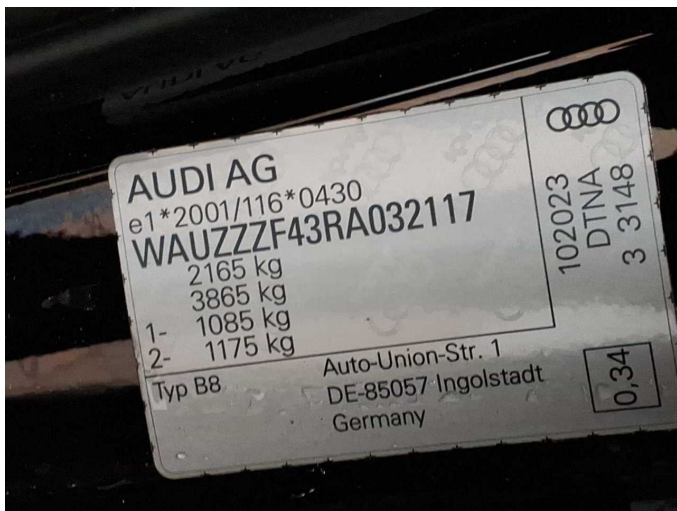


Figure 11: VIN

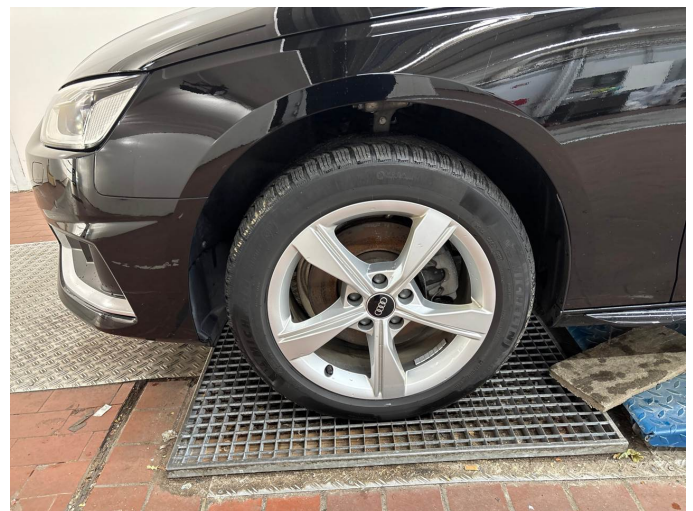


Figure 12: Mounted tyres

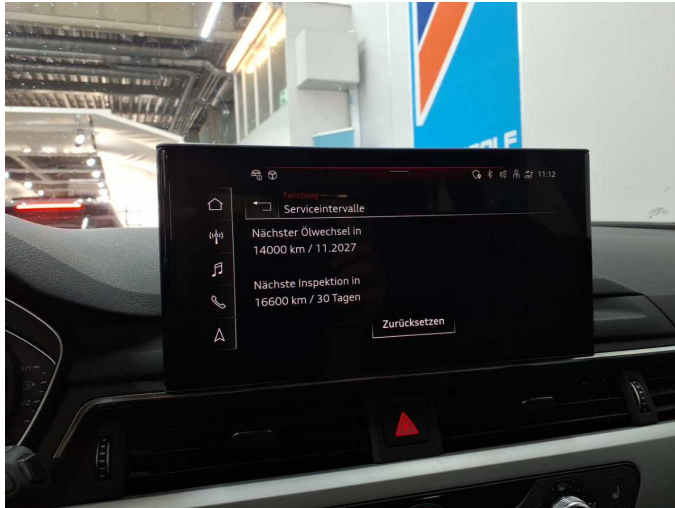


Figure 13: Documents

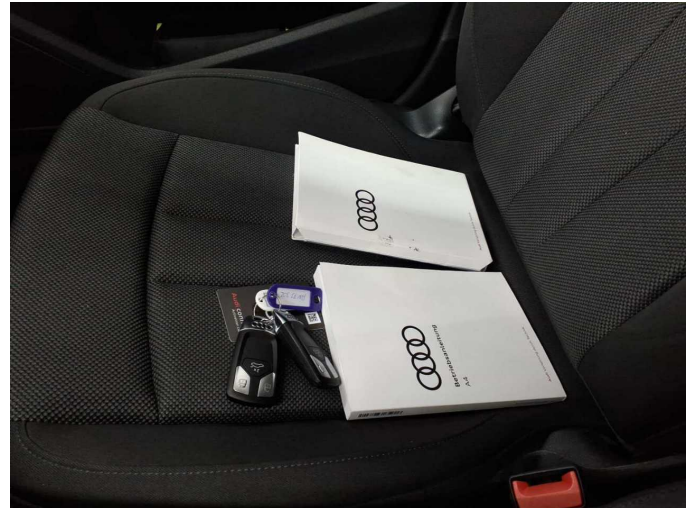


Figure 14: Documents



Figure 15: Additional tyres



Figure 16: Navigation



Figure 17: Misc.



Figure 18: Misc.



Figure 19: Misc.



Figure 20: Misc.



Figure 21: Misc.



Figure 22: Misc.

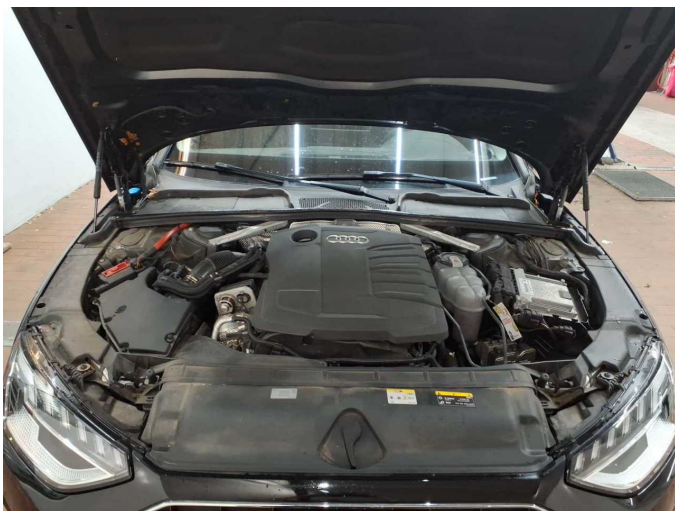


Figure 23: Misc.



Figure 24: Misc.



Figure 25: Misc.



Figure 26: Misc.



Figure 27: Misc.



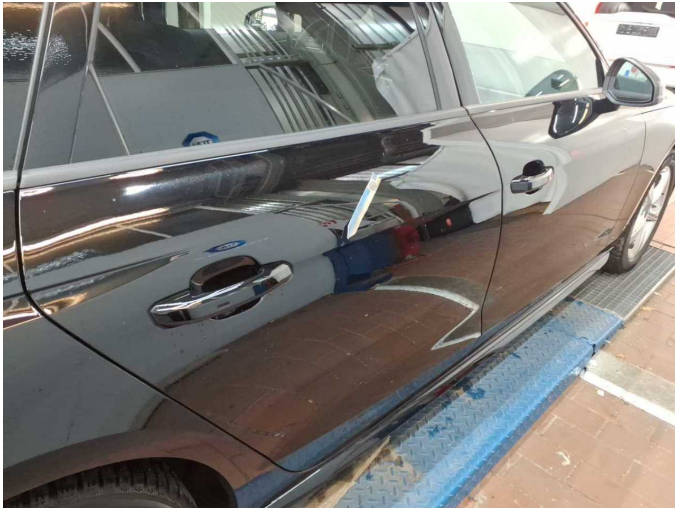
Figure 28: Misc.



Figure 29: Misc.



Figure 30: Misc.



Damage 2: Door - rear right side: Door - dent(s) - Smart repair



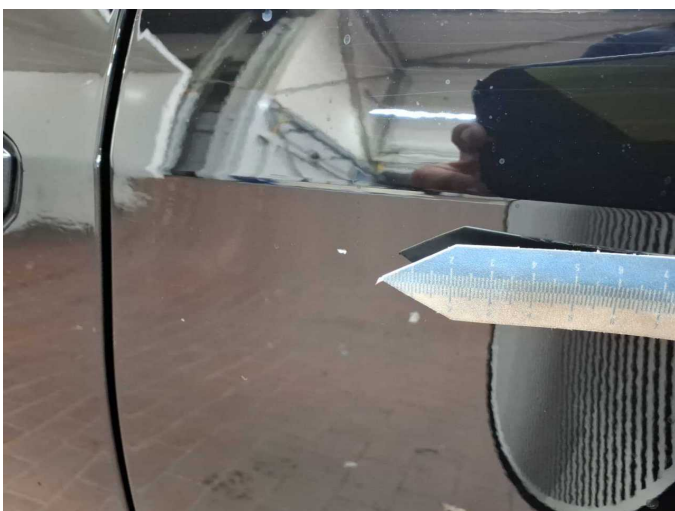
Damage 2: Door - rear right side: Door - dent(s) - Smart repair



Damage 2: Door - rear right side: Door - dent(s) - Smart repair



Damage 3: Door - rear left side: Door - Scratch(es) - Smart repair



Damage 3: Door - rear left side: Door - Scratch(es) - Smart repair



Damage 4: Front bumper: Front bumper - Scratch(es) - Smart repair



Damage 4: Front bumper: Front bumper - Scratch(es) - Smart repair



Damage 5: Braking system: Brake discs - front - Corrosion - Replace



Damage 5: Braking system: Brake discs - front - Corrosion - Replace



Damage 5: Braking system: Brake discs - front - Corrosion - Replace



Damage 5: Braking system: Brake discs - front - Corrosion - Replace