

Expertise

Protocol number: 46294940
Order No. / Reference: MW3041570
Inspection date: 30 Jun 2026

Manufacturer: Renault

Model: Kangoo Maxi Z.E. 33 (mit Batterie)

VIN: VF1FW000468940206



Vehicle details

Manufacturer / Type / Model / Equipment

Renault Kangoo Maxi Z.E. 33 (mit Batterie)

Vehicle Identification number VF1FW000468940206

Mileage (Read) 12,670 km

First registration 17 May 2022

Number of holders 1

Power / Engine displacement 44 kw /

Fuel type / Cylinder Electric / 0

Gearbox / Number of gears Direct drive / 1

Type of drive Front drive

Type of vehicle Van

Colour / colour code Mineral-Weiß

Doors / Seats 5 / 2

Upholstery type Cloth

Colour of upholstery Black-Anthracite

Vehicle with smoke odor no



Vehicle details

Maintenance booklet / proof	Available / complete	Next maintenance in	36,477 km
Last service on / at	07/2024 at 9,145 km		
Key is / should be	2 / 2	FZG documents	ZB#2 (B) was available (copy), ZB#1 (S) was not available.
		Letter No.	GN301247
Previous damage / Accident	Detectable	Repainting	Detectable
Inspection conditions	sufficient	Lifting equipment / pit	No
Test drive	Not performed	Engine function test	Performed
Manufacturer key number/ type code number	3333 / AYJ 00165		
Emission standard	2017/1151;WLTP;reine Elektrofz	fine dust sticker	
Permitted total weight	2,180 kg	Empty weight	

Tyres

Mounted tyres

#	Tyre size	Type of tyre	Manufacturer	Tread depth
1)	195/65 R15 95H	All-season tyres on Steel rim with wheel cover	Hankook	5mm / 5mm
2)	195/65 R15 95H	All-season tyres on Steel rim with wheel cover	Hankook	6mm / 6mm

Replacement

Typ	Tyre size	Type of tyre	Manufacturer	Tread depth
E				

Legend: Tread depth information for the left tire is listed first, for the right tire it is listed second on the axle in the direction of travel.



Equipment

Standard equipment

- Storage compartment in front doors and dashboard
- Anti-lock braking system with electronic brake-force distribution (EBD)
- On-board computer ZE
- Brake light: Automatic brake light activation when the accelerator is released.
- ESP with Hill Start Assist
- Electric front windows (with one-touch function on the driver's side)
- Transmission: Direct drive
- Lockable glove compartment
- Heating with programmable preheating/pre-ventilation of the interior
- Charging cable (230 V/16 A/1-phase) (with IEC Type 2 connector for standard charging)
- Radio: CD radio, DAB+, MP3 (with Bluetooth hands-free system - USB and AUX connection)
- Wheels: Wheel covers "Brigantin"
- Sliding door on the right, closed
- Protective bar behind the driver's seat
- Side protection reinforcement
- Safety belts (three-point safety belt, height adjustable - PRS III: Programmed restraint system with pyrotechnic belt tensioners (for driver and front passenger) and belt force limiters (reduces the belt forces acting on the chest during impact by 35%))
- Airbag: Driver's side
- Exterior mirrors, electrically adjustable and heated
- Outdoor temperature display
- third brake light
- Digital clock in the instrument panel
- ECO mode (reduction of engine power (torque/speed) by 50% to increase range by up to 10%)
- ZE Voice sound simulator, speed-dependent (for acoustic warning of other road users and pedestrians between 0-30 km/h)
- Rear doors, asymmetrical, without windows
- Front headrests (2), height adjustable
- Paint finish: Solid
- Height-adjustable steering wheel
- Upholstery: Cloth
- Radio installation with roof antenna
- Tires: Spare wheel on steel rim (tire size 195/65 R 15)
- Wheels: Tire size 195/65 R15 (rolling resistance optimized, Michelin Energy Saver +)
- Side protection strips
- Power steering
- 12V socket at the front
- Lashing eyes: 6 in the load compartment floor, 2 on the sides of the load compartment
- Electronic immobilizer
- Central locking with radio remote control (integrated into the key)

Extra equipment

- Airbag: Passenger airbag
- Rear doors, asymmetrical, with window (with rear window heating - with rear window wiper)
- DAB+ MP3 radio with Bluetooth
- Partition wall with window
- Rear parking aid RDPROX
- Air conditioning + heat pump and pollen filter PKCAF1
- Plastic floor in the cargo area
- Sliding door on the left, without window

Brief expert findings

Documents submitted	At the time of the inspection, the vehicle registration certificate Part 2 (title) was available, but the vehicle registration certificate Part 1 (document) was not. (Copy)
VIN comparison	The vehicle identification number (VIN) was read from the vehicle and its conformity with the submitted documents was confirmed by the undersigned during the inspection.
Inspection	The inspection conditions were sufficient for the assessment of the vehicle. No lifting equipment or pit was available for inspecting the vehicle. Therefore, inspection of the vehicle's underside was only possible to a limited extent.
Test drive	No test drive/shunting maneuver was carried out during the inspection of the vehicle.
Engine function test	An engine test run was performed.



Value reducing factors

No.	Component group	Description
1	Wheel / tyres	Wheel cover - front right side - Missing - Replace
2	Front bumper	Front bumper (unpainted) - Scratch(es) - Loss in value
3	Body	Body - Glued / labelled - De-glue / neutralise
4	Interior	Cargo area floor - Holes - Loss in value
5	Interior	Interior (Verkleidungen) - Broken / torn - Replace
6	Side panel - rear left side	Side panel - Scratched - Paint

Wear and tear

No.	Component group	Description
1	Front bumper	Front bumper - Stone chips - No deduction
2	Vehicle glazing	Windscreen - Stone chips - No deduction
3	Body	Body - Dent / paintcoat damage - No deduction

The vehicle shows signs of wear and tear commensurate with its age and use.

Previous damages

No.	Previous damage	Extent of damage (Net)
1	Front, Provided by user / customer, from 14 Oct 2022	5.828,67 €

Repainting

No.	Repainting
1	Bonnet, Professionally carried out, Invoice of repair done Non-existent

Paint coat thickness measurement

Bonnet 180 µm |

Order/Scope of Order

An order was placed to prepare a sales report for the described vehicle. This report includes the following:

- Description of key vehicle information
- Documentation of equipment features
(*Delivery by third-party service providers*)
- Documentation of damage, defects, missing parts
- Documentation of prior damage, unrepaired prior damage, repainting
- A brief visual or functional inspection of the equipment details, if possible.
(*Functional testing of driver assistance systems is not included in the scope of services!*)
- a photographic documentation of the vehicle



Basis for the order

This product is based on the guidelines for vehicle returns and valuations of light commercial vehicles published by Alphabet Fleet Management GmbH. The expert makes the specific findings in each individual case objectively, within the framework of the prescribed standards, based on their own expertise.

The vehicle inspection takes place in a fully assembled, unassembled state.

Damage or defects that can only be detected during disassembly/diagnostic work or through further investigation remain within the realm of prognostic risk. An increased risk exists due to concealed defects caused by fraudulent misrepresentation and which were not identifiable by the expert.

Damage or defects resulting from normal use or wear and tear of the vehicle will be accepted in accordance with the applicable standard.

There was no explicit identification or monetary consideration of the expected features within the product.

Features which, in their nature and extent, slightly exceed normal use but do not constitute unacceptable damage, will be documented and indicated as signs of wear, if applicable.

Damage or defects that, according to the applicable standard, can no longer be attributed to normal use or wear and tear are listed under "Value Reducing Factors" in the product description.

Depending on the product specification, a monetary ID can be provided. If this takes place, the costs can be 100% d or pro rata depending on the vehicle's age and mileage.

Previous damages

According to available information previous damages were repaired at the vehicle. Traces of repairs, which allow conclusions about the area of repair, were not recognizable during the inspection.



Figure 1: Diagonal front (left)



Figure 2: Diagonal front (right)



Figure 3: Diagonal rear (left)



Figure 4: Diagonal rear (right)



Figure 5: Interior - front



Figure 6: Interior - rear



Figure 7: Instrument cluster



Figure 8: Instrument panel



Figure 9: Interior 360° view



Figure 10: Cargo area



Figure 11: VIN



Figure 12: Mounted tyres

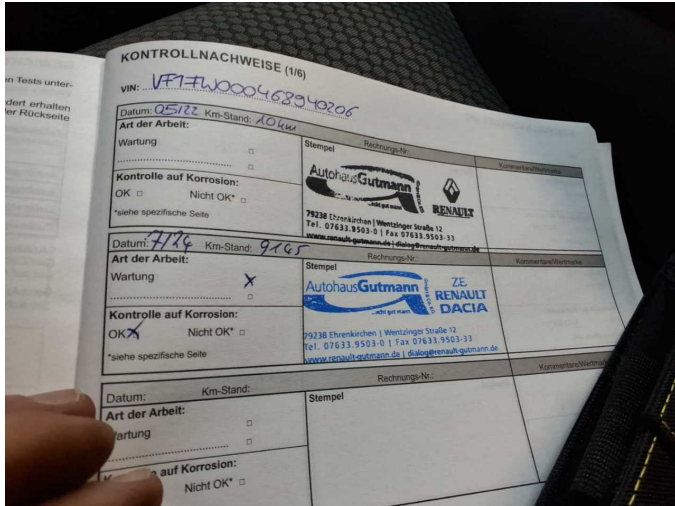


Figure 13: Documents



Figure 14: Documents



Figure 15: Documents



Figure 16: Misc.



Figure 17: Misc.



Figure 18: Misc.



Figure 19: Misc.



Figure 20: Misc.



Figure 21: Misc.



Figure 22: Misc.



Damage 1: Wheel / tyres: Wheel cover - front right side - Missing - Replace



Damage 1: Wheel / tyres: Wheel cover - front right side - Missing - Replace



Damage 2: Front bumper: Front bumper (unpainted) - Scratch(es) - Loss in value



Damage 2: Front bumper: Front bumper (unpainted) - Scratch(es) - Loss in value



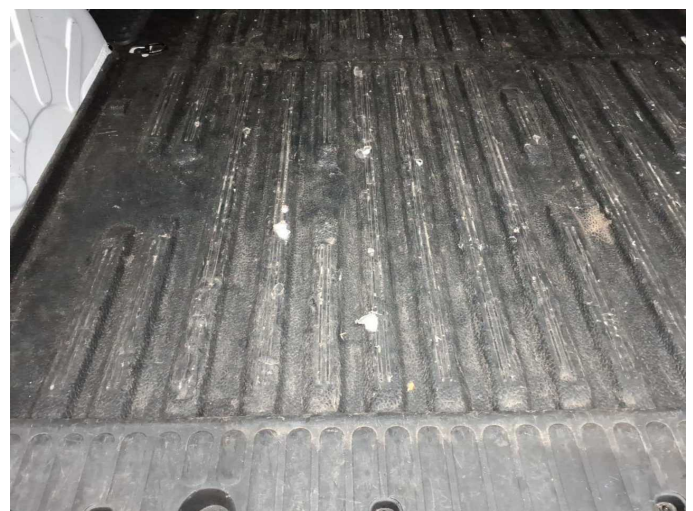
Damage 3: Body: Body - Glued / labelled - De-glug / neutralise



Damage 3: Body: Body - Glued / labelled - De-glug / neutralise



Damage 3: Body: Body - Glued / labelled - De-glug / neutralise



Damage 4: Interior: Cargo area floor - Holes - Loss in value



Damage 4: Interior: Cargo area floor - Holes - Loss in value



Damage 4: Interior: Cargo area floor - Holes - Loss in value



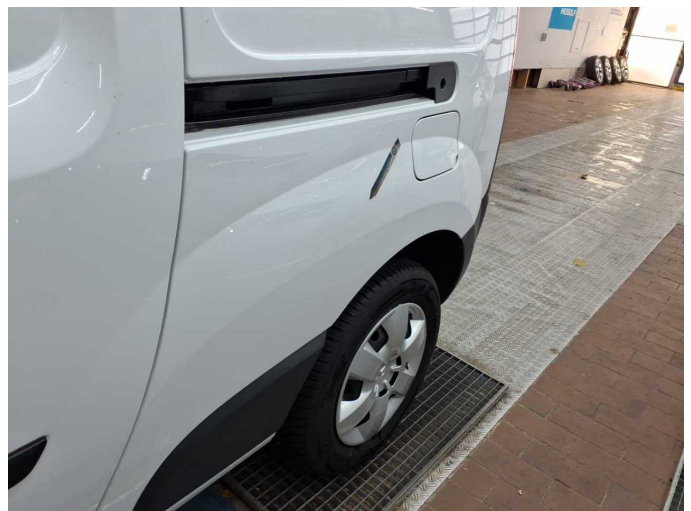
Damage 5: Interior: Interior (Verkleidungen) - Broken / torn - Replace



Damage 5: Interior: Interior (Verkleidungen) - Broken / torn - Replace



Damage 5: Interior: Interior (Verkleidungen) - Broken / torn - Replace



Damage 6: Side panel - rear left side: Side panel - Scratched - Paint



Damage 6: Side panel - rear left side: Side panel - Scratched - Paint



Damage 6: Side panel - rear left side: Side panel - Scratched - Paint



Damage 6: Side panel - rear left side: Side panel - Scratched - Paint



Repainting 1: Bonnet



Repainting 1: Bonnet