

Expertise

Protocol number: 46261979
Order No. / Reference: 26595087
Inspection date: 1 Jul 2026

Manufacturer: Mercedes-Benz

Model: C 300 e T 9G-TRONIC Avantgarde

VIN: W1KAH5EB4PF118375



Vehicle details

Manufacturer / Type / Model / Equipment

Mercedes-Benz C 300 e T 9G-TRONIC Avantgarde

Vehicle Identification number	W1KAH5EB4PF118375
Mileage (Read)	67,735 km
First registration	6 Jun 2023
Number of holders	1
Next periodical technical inspection	06/2026 (Report not on hand)

Power / Engine displacement	150 kw / 1,999 ccm
Fuel type / Cylinder	Hybr.B/E ext.aufll / 4
Gearbox / Number of gears	Automatic / 9
Type of drive	Rear drive
Type of vehicle	Station wagon

Colour / colour code	SPEKTRALLBLAU METALLIC
Doors / Seats	5 / 5
Upholstery type	Cloth / leather combination
Colour of upholstery	Black-Grey

Vehicle with smoke odor	no
--------------------------------	----



Vehicle details

Maintenance booklet / proof	Non-existent	Next maintenance in	175 Tag(e)
Key is / should be	2 / 2	FZG documents	ZB#2 (B) was available (copy), ZB#1 (S) was not available.
		Letter No.	GV691789
Previous damage / Accident	None detectable	Repainting	None detectable
Inspection conditions	sufficient	Lifting equipment / pit	yes
Test drive	Not performed	Engine function test	Performed
Manufacturer key number/ type code number	2222 / BEP 00067		
Emission standard	EURO6;WLTP;AP;PI/CI; M, N1 I	fine dust sticker	
Permitted total weight	2,655 kg	Empty weight	

Tyres

Mounted tyres

#	Tyre size	Type of tyre	Manufacturer	Tread depth
1)	225/45 R18 95Y	Summer tyres on Light alloy	Goodyear	6mm / 6mm
2)	255/40 R18 99Y	Summer tyres on Light alloy	Goodyear	6mm / 6mm

Legend: Tread depth information for the left tire is listed first, for the right tire it is listed second on the axle in the direction of travel.

TÜV SÜD Auto Partner GmbH
Wiesenring 2
04159 Leipzig

Inspection location
Mosolf SE & Co.KG
Faberweg 25
73230 Kirchheim unter Teck



Equipment



Standard equipment

- Airbag for driver and front passenger
- Airbag: Center airbag (Additional airbag for increased front occupant protection in the event of a side impact)
- Airbag: Sidebag for driver and front passenger (combined thorax/pelvisbag)
- Airbag: Windowbag for driver and front passenger
- Acoustic Surrounding Protection (To ensure that your electric vehicle does not become a danger to pedestrians and cyclists during almost silent driving, the Acoustic Surrounding Protection generates Mercedes-Benz specific sounds outside the vehicle up to a speed of approximately 30 km/h. It distinguishes between forward and reverse driving.)
- Brake assist, active
- Double cup holder at the front
- EASY-PACK tailgate (with electric operation for opening and closing)
- Electronic Stability Program (ESP) (including Anti-lock Braking System (ABS) and Traction Control System (ASR))
- Speed Limit Assistant (The Speed Limit Assistant detects and displays speed limits.)
- Rear bumper in body color (rear bumper painted in body color with centrally positioned trim panel (wing) in glossy chrome)
- KEYLESS-GO start function
- THERMATIC automatic climate control with 2 climate zones (control via the central display or the climate control unit in the center console; sensor system for detecting, for example, indoor/outdoor temperature, sunlight, humidity, and dew point; automatic recirculation (only in conjunction with navigation system); ventilation system consisting of: 3 center vents and 2 side vents; fine dust activated carbon filter for filtering dust, soot, and pollen; dew point sensor; residual heat function for efficient use of engine waste heat)
- LED High Performance headlights (The elements of the LED High Performance headlights: - Torch and trifunctional light guide for daytime running lights, position lights and turn signals - Multi-chamber reflector system with 4 individual reflectors each) for low beam and high beam. The elements of the rear lights in LED technology: - All light functions in full LED technology - Tail light - Brake light and parking light - Rear fog light (only on the left side) - Turn signals - Reversing light - 3rd brake light)
- Mercedes-Benz Emergency Call System (can provide a crucial time advantage in an emergency. A communication module with its own SIM card automatically triggers an emergency call upon detection of an accident, which can shorten the time until emergency services arrive. The emergency call can also be triggered manually to organize assistance.)
- Airbag: Automatic passenger airbag deactivation (The system automatically deactivates the passenger airbag as soon as it detects a rear-facing child seat or registers that the passenger seat is unoccupied. A transponder in the child seat is not necessary. If it detects that an adult is taking the seat, the airbag is automatically activated, reducing the risk of incorrect operation.)
- Ambient lighting with 64 light colors
- Left and right exterior mirrors are heated and electrically adjustable
- Basic services (breakdown management, maintenance management, accident management, telediagnosis, remote vehicle diagnostics)
- Roof rails in polished aluminum
- DYNAMIC SELECT (consisting of driving programs: Comfort, Sport, Eco mode)
- ECO start/stop function
- Electric windows (4-way)
- Velour floor mats
- Transmission: 9-speed automatic, 9G-TRONIC
- rear window wiper
- Heated rear window
- Interior headliner fabric crystal grey
- ISOFIX child seat attachment with top tether in the rear
- Mechanical child safety lock for the rear doors
- Rear headrests (3)
- Front headrests
- Paint finish: Solid
- Charging cable for household socket, 5m, smooth (This charging cable, also called Mode 2 cable, allows you to charge the vehicle battery at the household socket with up to 1.8 kW (230 V, 1-phase, 8A) and fits sockets of type E/F CEE 7/7)
- Cargo area cover including EASY-PACK safety net
- Charging system: AC charging system 11kW (More flexibility: With the powerful AC charging system, you can charge your plug-in hybrid quickly and easily with up to 11 kW (3-phase) or 7.4 kW (1-phase). In addition to a wallbox at home, you can also connect your vehicle to a variety of public charging stations. These usually supply alternating current – just like conventional sockets.)
- Steering wheel: Multifunction sports steering wheel in leather (sporty steering wheel in 3-spoke design - leather finish - black grained shift paddles - control via touch panels: left: driver display, cruise control and limiter or active distance assist DISTRONIC; right: MBUX multimedia system (e.g. audio volume and track selection, telephony and navigation), touch sensitivity adjustable via central display)
- Center console in high-gloss black
- Otto particulate filter



- Package: Storage (storage compartment with net on the left in the load compartment - double cup holder in the center console for 2 x 750 ml - elastic tension strap on the right in the load compartment - folding box under the load floor - 1 additional bag hook on the right in the load compartment - recess including storage tray on the right in the load compartment - map pockets on the backs of the front seats - reversible mat in the boot floor)
- Package: Interior lighting package (Illuminated glove compartment - Lighting for wireless mobile interface or mobile phone storage - Lighting for the storage compartment in the center console or the double cupholders - Lighting for the storage compartment under the center console armrest - Two vanity lights in front - Two reading lights in the overhead control unit - Two reading lights in the interior mirror in conjunction with mirror parking - Two reading lights and interior light function in the rear grab handles - Lighting for the trunk or cargo area)
- Upholstery: ARTICO leatherette/fabric
- Radio: MBUX (fully digital instrument display with 26 cm (10.25") color LCD display and a resolution of 1440 x 540 pixels - Bluetooth telephony / audio - WLAN hotspot)
- Radio accessories: Digital radio (DAB)
- Radio accessory: Communication module (LTE) for using Mercedes me connect services (The communication module with a vehicle-integrated, LTE-enabled SIM card offers you added comfort and safety. It continuously connects you to your vehicle – and the vehicle to infrastructure such as the Mercedes-Benz server or the internet. This allows you to use services such as Mercedes me connect Live Traffic Information.)
- Remote Services Plus (Communication module - Mercedes me services: remote vehicle status query, programming of auxiliary heating/ventilation, remote door locking and unlocking, sunroof/windows with remote locking and opening including ventilation remote control, personalization, vehicle location, vehicle tracking, geographic vehicle monitoring, parking service monitoring, finder function (Remote Vehicle Finder), notification when exceeding the driving speed, Send2Car function)
- Package: AVANTGARDE Exterior (300e) (Radiator grille with integrated Mercedes star and a chrome-plated louvre, radiator grille frame in chrome - 43.2 cm (17") 5-spoke light-alloy wheels, polished finish, with front axle 225/50 R 17 on 7 J x 17 ET 44.5, rear axle 245/45 R 17 on 8 J x 17 ET 49.5 - Dynamic front bumper with centrally positioned trim panel in polished chrome and diamond-pattern air intakes in grained black - Comfort suspension. - Trim strip on the rear side windows in high-gloss black)
- Package: Parking (12 ultrasonic sensors - reversing camera - Active Parking Assist with PARKTRONIC: detects free parking spaces, assisted parking, visual and acoustic warning, display of camera and ultrasonic data in the media display - Cross traffic warning: can provide visual and acoustic warnings when reversing out of a parking space and, if necessary, automatically initiate emergency braking - Reverse maneuvering brake: can trigger a braking process - Drive-away assist)
- Radio: Extended MBUX functions (personalization (profiles) and prediction functions - MBUX voice assistant "LINGUATRONIC" with natural language understanding - activation via Hey Mercedes - learning function of the MBUX voice assistant through connection with a cloud-based online dictionary, Mercedes me connect service free of charge for 3 years from activation - Wi-Fi hotspot - internet radio)
- Radio accessories: Central display (High-resolution central display, slightly inclined towards the driver with a 24 cm (9.5") screen diagonal, with MBUX multimedia system - touch display with LCD technology)
- Tire pressure monitoring system (TPMS)
- Windscreen wipers with rain sensor
- Power steering
- Seats: Rear seat backrests foldable
- Lane Keeping Assist, active
- Cruise control
- High-visibility vest for drivers
- Electronic immobilizer
- Central locking with remote control
- Decorative elements in diamond pattern, silver-grey



Extra equipment

- Airbag: Side airbags in the rear
- Charging cable for household socket, 8m, smooth (This charging cable, also called Mode 2 cable, allows you to charge the vehicle battery at the household socket with up to 1.8 kW (230 V, 1-phase, 8A) and fits sockets of type E/F CEE 7/7.)
- Charging cable for wallbox and public charging station, 8m, smooth 11kW (This charging cable, also called Mode 3 cable, allows you to charge the vehicle battery at the wallbox or at public charging stations with up to 11 kW (Type 2, 3-phase, 16 A).)
- Heat and noise insulating acoustic glass (for windshield and front doors)
- Heat-insulating dark tinted glass
- KEYLESS-GO (access and driving authorization system)
- Package: Advanced Infotainment Package (MBUX Navigation Premium (hard drive navigation, pre-installation for Live Traffic Information), Traffic Sign Assist, Smartphone Integration (connects the mobile phone wirelessly to the multimedia system via Apple CarPlay and Android Auto), Wireless charging system for mobile devices in the front, Driver display - 31.2 cm (12.3") color LCD display, Central display - 30.2 cm (11.9") touch display with LCD technology)
- Package: Driving Assistance (Active Distance Assist DISTRONIC, Active Speed Limit Assist, Extended Automatic Restart on Highways, Route-Based Speed Adaptation with Traffic Jam End Function, Active Traffic Jam Assist, Active Steering Assist, Active Lane Change Assist, Active Emergency Stop Assist, Emergency Lane Function, Active Brake Assist with Vehicle, Bicycle and Pedestrian Detection; Intersection Function, Turn Function, Traffic Jam End Emergency Braking Function, Evasive Steering Assist, Active Lane Keeping Assist, Active Blind Spot Assist, Exit Warning Function)
- Package: Public Charging (charging cable for wallbox and public charging stations, 5m, smooth (charging the vehicle battery at the wallbox or at public charging stations with up to 11 kW (Type 2, 3-phase, 20 A)) - Remote and Charging Services Plus)
- Paint finish: Metallic
- Radio accessories: Advanced sound system (with 9 speakers and 225 watts system power)
- Towbar with ESP trailer stabilization
- Wheels: 45.7 cm (18") light alloy wheels in 5-twin-spoke design (black painted and polished with front axle 225/45 R 18 on 7.5 J x 18 ET 40, rear axle 255/40 R 18 on 9 J x 18 ET 58)
- Package: Advanced Comfort Package (Heated seats for driver and front passenger - Seat Comfort Package: - Numerous electric and manual adjustment options for the front seats to adapt to the specific body and comfort requirements of the driver and front passenger - Electro-pneumatic 4-way lumbar support and lateral support adjustment with control element on the seat - Electric seat cushion tilt adjustment - Electric height adjustment - Electric backrest adjustment - Electric seat cushion depth adjustment - Mechanical longitudinal adjustment - Mechanical headrest adjustment)
- Package: Mirror package (both exterior mirrors electrically folding (button in the driver's door control panel) - interior mirror and exterior mirror on the driver's side automatically dimming continuously - ambient lighting of the exterior mirror to illuminate the entry area with projection of the Mercedes-Benz logo)
- Package: Night (300e Estate with Avantgarde exterior) (Radiator grille: louvers in high-gloss black and trim in high-gloss chrome (17") Light-alloy wheels in 5-spoke design, polished, front axle 225/50R17 on 7Jx17 ET44.5, rear axle 245/45R17 on 8Jx17 ET49.5 Front apron with trim (wing) in high-gloss black. Rear bumper with trim (wing) in high-gloss black. Belt trim strip and window surrounds in high-gloss black. Exterior mirror housings painted in high-gloss black. Heat-insulating dark-tinted glass at the rear (from the B-pillar). Roof rails in black.)
- Seats: Comfort seats
- Steering wheel: Steering wheel heating
- THERMOTRONIC automatic climate control with 4 climate zones (controlled via the central display or the climate control unit in the center console, with Auto button for automatic control of temperature, air volume and air distribution - control unit on the back of the center console - automatic recirculation when a tunnel is detected via GPS, only in conjunction with navigation system - sensors for detecting e.g. inside/outside temperature - fine dust activated carbon filter - ventilation system - dew point sensors - residual heat function for efficient use of engine waste heat)
- URBAN GUARD Vehicle Protection Plus (Anti-theft alarm system - Towing protection with visual and audible warning in case of detected change in position - Alarm horn - Interior monitoring (triggers upon movement inside the vehicle) - Assistance with vehicle theft (theft assistance), free of charge for 3 years from activation - Emergency key deactivation, free of charge for 3 years from activation - Collision detection, free of charge for 3 years from activation - URBAN GUARD label on the front side windows)



Brief expert findings

Documents submitted	At the time of the inspection, the vehicle registration certificate Part 2 (title) was available, but the vehicle registration certificate Part 1 (document) was not. (Copy)
VIN comparison	The vehicle identification number (VIN) was read from the vehicle and its conformity with the submitted documents was confirmed by the undersigned during the inspection.
Inspection	The inspection conditions were sufficient for the assessment of the vehicle. Lifting equipment and/or a pit were available for examining the vehicle.
Test drive	No test drive/shunting maneuver was carried out during the inspection of the vehicle.
Engine function test	An engine test run was performed.

Value reducing factors

No.	Component group	Description
1	Side panel - rear left side	Sill - Scratch(es) - Smart repair
2	Wheel / tyres	Alloy rim - front right side - Scratch(es) - Loss in value
3	Rear bumper	Rear bumper - dent(s) - Loss in value
4	Door - front right side	Door - Scratch(es) - Paint

Wear and tear

No.	Component group	Description
1	Misc.	Inspection / maintenance - No evidence - No deduction
2	Vehicle glazing	Windscreen - Stone chips - No deduction
3	Roof	Roof rail - right side - dent(s) - No deduction
4	Boot lid / rear door	Boot lid - dent(s) - No deduction
5	Rear bumper	Rear bumper - Scratch(es) - No deduction
6	Roof	Roof - dent(s) - No deduction
7	Front bumper	Front bumper - Stone chips - No deduction
8	Bonnet	Bonnet - Stone chips - No deduction

The vehicle shows signs of wear and tear commensurate with its age and use.

Order/Scope of Order

An order was placed to prepare a sales report for the described vehicle. This report includes the following:

- Description of key vehicle information
- Documentation of equipment features
(*Delivery by third-party service providers*)
- Documentation of damage, defects, missing parts
- Documentation of prior damage, unrepaired prior damage, repainting
- A brief visual or functional inspection of the equipment details, if possible.
(*Functional testing of driver assistance systems is not included in the scope of services!*)
- a photographic documentation of the vehicle



Basis for the order

This product is based on the guidelines for vehicle returns and valuations published by Alphabet Fleet GmbH. The expert makes the specific findings in each individual case objectively, within the framework of the prescribed standards, based on their own expertise.

The vehicle inspection takes place in a fully assembled, unassembled state.

Damage or defects that can only be detected during disassembly/diagnostic work or through further investigation remain within the realm of prognostic risk. An increased risk exists due to concealed defects caused by fraudulent misrepresentation and which were not identifiable by the expert.

Damage or defects resulting from normal use or wear and tear of the vehicle will be accepted in accordance with the applicable standard.

There was no explicit identification or monetary consideration of the expected features within the product.

Features which, in their nature and extent, slightly exceed normal use but do not constitute unacceptable damage, will be documented and indicated as signs of wear, if applicable.

Damage or defects that, according to the applicable standard, can no longer be attributed to normal use or wear and tear are listed under "Value Reducing Factors" in the product description.

Depending on the product specification, a monetary ID can be provided. If this takes place, the costs can be 100% d or pro rata depending on the vehicle's age and mileage.

Previous damages

No apparent prior damage that had been repaired could be found on the vehicle.



Figure 1: Diagonal front (left)



Figure 2: Diagonal front (right)



Figure 3: Diagonal rear (left)



Figure 4: Diagonal rear (right)

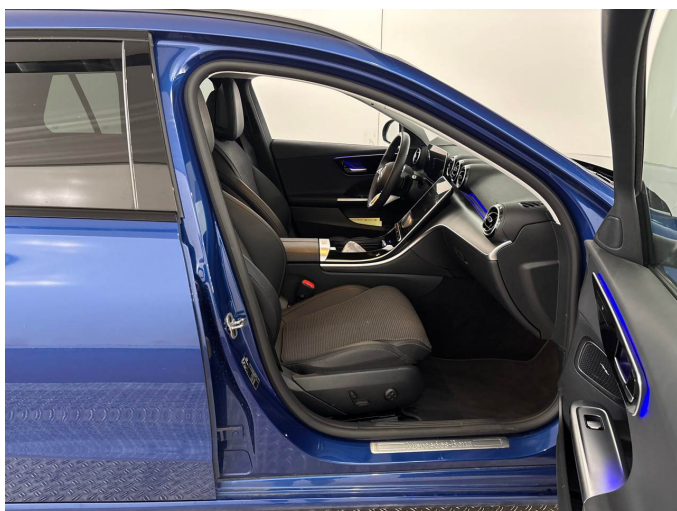


Figure 5: Interior - front



Figure 6: Interior - rear



Figure 7: Instrument cluster



Figure 8: Instrument panel



Figure 9: Interior 360° view



Figure 10: VIN

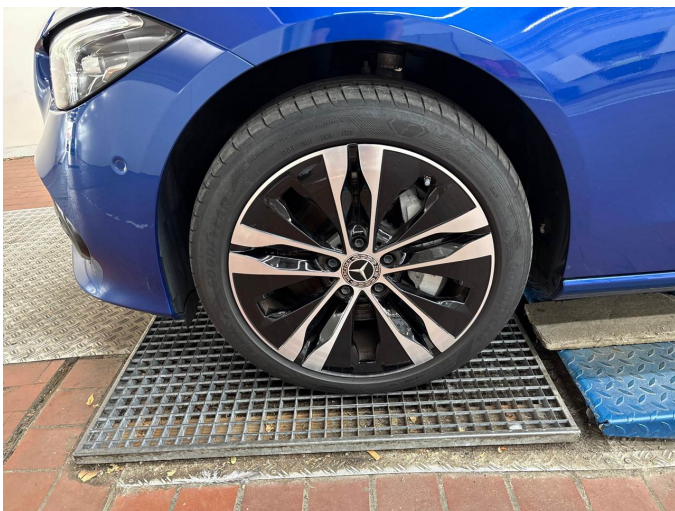


Figure 11: Mounted tyres



Figure 12: Documents



Figure 13: Documents



Figure 14: Navigation



Figure 15: Misc.

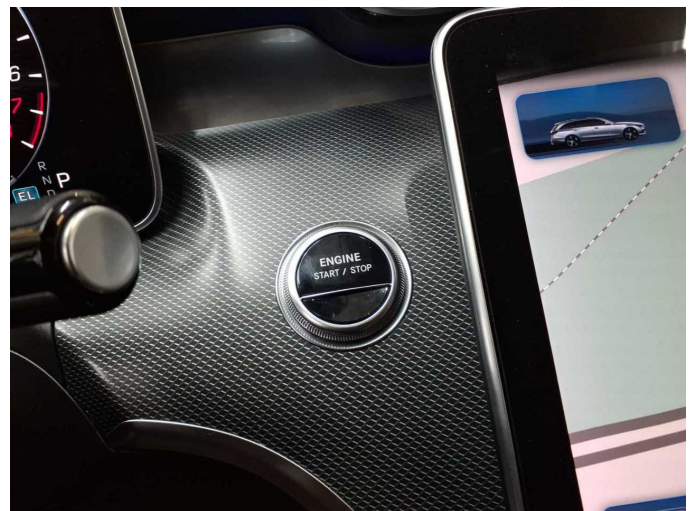


Figure 16: Misc.



Figure 17: Misc.

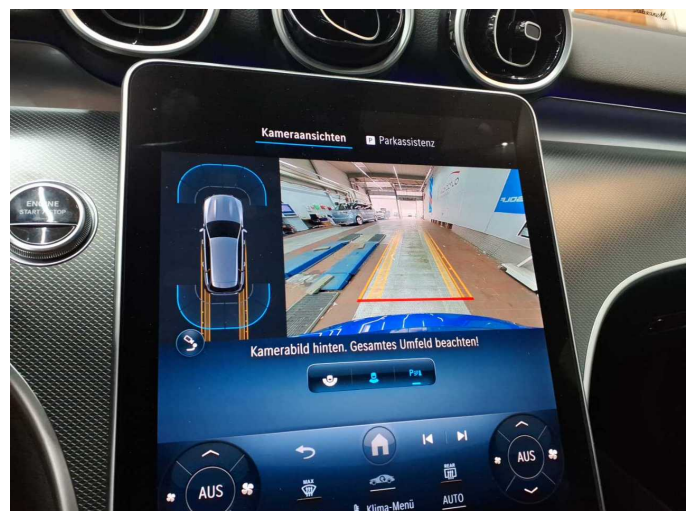


Figure 18: Misc.



Figure 19: Misc.



Figure 20: Misc.

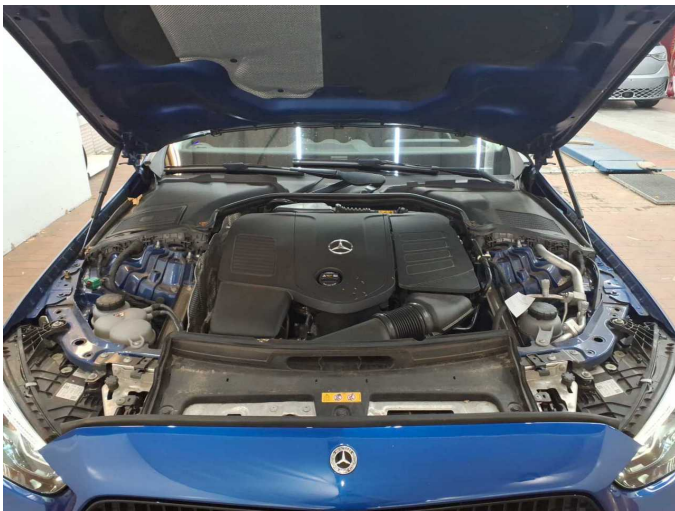


Figure 21: Misc.



Figure 22: Misc.

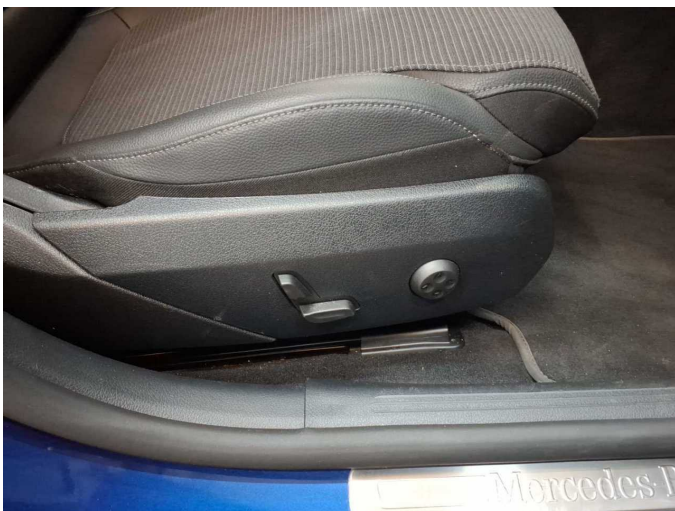


Figure 23: Misc.



Figure 24: Misc.



Figure 25: Misc.



Figure 26: Misc.



Figure 27: Misc.



Figure 28: Misc.



Figure 29: Misc.



Figure 30: Misc.



Figure 31: Misc.



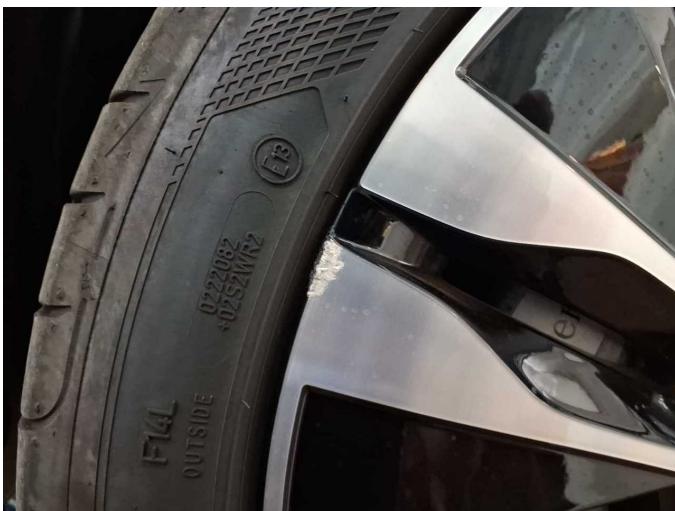
Damage 1: Side panel - rear left side: Sill - Scratch(es) - Smart repair



Damage 1: Side panel - rear left side: Sill - Scratch(es) - Smart repair



Damage 2: Wheel / tyres: Alloy rim - front right side - Scratch(es) - Loss in value



Damage 2: Wheel / tyres: Alloy rim - front right side - Scratch(es) - Loss in value



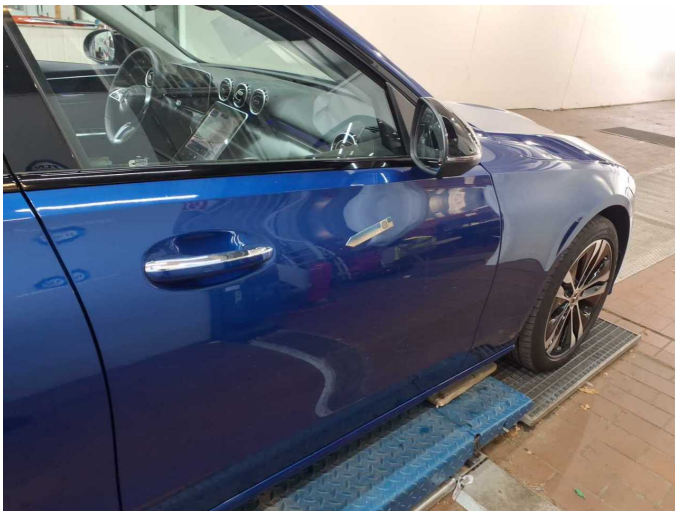
Damage 2: Wheel / tyres: Alloy rim - front right side - Scratch(es) - Loss in value



Damage 3: Rear bumper: Rear bumper - dent(s) - Loss in value



Damage 3: Rear bumper: Rear bumper - dent(s) - Loss in value



Damage 4: Door - front right side: Door - Scratch(es) - Paint



Damage 4: Door - front right side: Door - Scratch(es) - Paint