

## Expertise

Protocol number: 46281921  
Order No. / Reference: 26543312  
Inspection date: 1 Jul 2026

Manufacturer: Mercedes-Benz

Model: GLC 220 d 4Matic 9G-TRONIC Exclusive

VIN: W1N2539151G022561



### Vehicle details

#### Manufacturer / Type / Model / Equipment

Mercedes-Benz GLC 220 d 4Matic 9G-TRONIC Exclusive

**Vehicle Identification number** W1N2539151G022561

**Mileage (Read)** 114,362 km

**First registration** 19 Nov 2021

**Number of holders** 1

**Power / Engine displacement** 143 kw / 1,950 ccm

**Fuel type / Cylinder** Diesel / 4

**Gearbox / Number of gears** Automatic / 9

**Type of drive** All-wheel drive

**Type of vehicle** SUV

**Colour / colour code** Cavansitblau Metallic

**Doors / Seats** 5 / 5

**Upholstery type** Artificial leather

**Colour of upholstery** Black-Anthracite

**Vehicle with smoke odor** no



## Vehicle details

<b>Maintenance booklet / proof</b>	digital proof / complete	<b>Next maintenance in</b>	154 Tag(e)
<b>Last service on / at</b>	12/2025 at 101,309 km		
<b>Key is / should be</b>	2 / 2	<b>FZG documents</b>	ZB#2 (B) was available (copy), ZB#1 (S) was not available.
		<b>Letter No.</b>	GF743356
<b>Previous damage / Accident</b>	Detectable	<b>Repainting</b>	None detectable
<b>Inspection conditions</b>	sufficient	<b>Lifting equipment / pit</b>	yes
<b>Test drive</b>	short drive on the company premises	<b>Engine function test</b>	Performed
<b>Manufacturer key number/ type code number</b>	2222 / AKG 00229		
<b>Emission standard</b>	EURO6;WLTP;AP;PI/CI; M, N1 I	<b>fine dust sticker</b>	
<b>Permitted total weight</b>	2,500 kg	<b>Empty weight</b>	

## Tyres

Mounted tyres				
#	Tyre size	Type of tyre	Manufacturer	Tread depth
1)	235/65 R17 104V	Summer tyres on Light alloy	Continental	7mm / 7mm
2)	235/65 R17 104V	Summer tyres on Light alloy	Continental	6mm / 6mm

**Legend: Tread depth information for the left tire is listed first, for the right tire it is listed second on the axle in the direction of travel.**



## Equipment

### Standard equipment

- Airbag for driver and front passenger
- Airbag: Side airbag for driver and front passenger
- Active Brake Assist
- Anti-lock braking system (ABS)
- Automatic passenger airbag deactivation
- On-board computer
- Roof rails in polished aluminum
- Tachometer
- DYNAMIC SELECT
- Electronic Stability Program (ESP)
- Chassis: AGILITY CONTROL chassis
- electric parking brake
- Transmission: 9G-TRONIC
- rear window wiper
- Instrument panel and door sills in ARTICO man-made leather
- Remote trunk lid release
- Instrument cluster with 2 tubular round instruments, 13.97 cm (5.5") multifunction display
- Headrests 5-way
- LED High Performance Headlights
- Steering column mechanically adjustable in height and length
- Navigation accessories: Extended MBUX functions
- Package: Interior light
- Radio: MBUX multimedia system
- Radio accessories: Touchpad
- Remote Services Plus
- Windscreen wipers with rain sensor
- Seats: Rear seat backrests foldable
- Seats: Front seats electrically adjustable
- High-visibility vest for drivers
- Central locking

### Extra equipment

- Towbar with ESP trailer stabilization (fully electrically foldable and retractable)
- Paint finish: Metallic
- Package: Advanced Infotainment
- Package: Advanced Comfort (Seat heating for driver and front passenger, driver's seat electrically adjustable with memory function, front right seat electrically adjustable with memory function)
- Package: Business (Advanced Parking Package: Active Parking Assist PARKTRONIC with reversing camera; Advanced Infotainment Package: Media display with touch operation, smartphone integration - Apple CarPlay and Android Auto, connectivity package navigation, traffic sign assist; Comfort Package: Heated seats for driver and front passenger, seat comfort package - electric and manual adjustment options for the front seats; larger fuel tank capacity)

- Airbag: Kneebag for driver
- Airbag: Windowbags
- 4MATIC all-wheel drive
- ATTENTION ASSIST
- Heated exterior mirrors (left and right), electrically adjustable from inside
- Diesel particulate filter
- Third brake light in LED technology
- EASY-Pack cargo cover (removable)
- Driving light assistant
- Electric windows (4-way)
- Velour floor mats in interior color
- Rear window heated
- Interior headliner fabric crystal grey
- KEYLESS-GO start function
- Climate: THERMATIC automatic climate control with 2 climate zones
- Communication module (LTE) for the use of Mercedes me connect services
- Paint finish: Solid
- Steering wheel: Multifunction sports steering wheel in 3-spoke design in black leather
- Mercedes-Benz emergency call system
- Package: Storage
- Upholstery: ARTICO leatherette/Grenoble fabric
- Radio accessories: Digital radio
- Tire pressure monitoring system (TPMS)
- Wheels: 43.2 cm (17") alloy wheels, 4-spoke design
- Power steering
- Seats: i-Size child restraint system on the outer rear seats
- Cruise control
- Immobiliser
- Decorative elements: Linden wood, line structure, glossy brown

- EASY-Pack tailgate with electric operation for opening and closing
- Package: Advanced Assistance (Mirror Package: Electrically folding exterior mirrors, lowering right exterior mirror, automatic dimming function; Lane Package: Active Lane Keeping Assist, Blind Spot Assist, Active Distance Assist DISTRONIC)
- Package: Advanced Park
- Upholstery: ARTICO man-made leather
- Wheels: 43.2 cm (17") alloy wheels, 4-way 5-twin-spoke design (tremolite grey painted and polished with 235/65 R17 tires on 7.5 J x 17 ET 36 rims)
- Auxiliary heating including auxiliary ventilation in summer
- Partition net for luggage compartment separation (and occupant protection)



## Brief expert findings

Documents submitted	At the time of the inspection, the vehicle registration certificate Part 2 (title) was available, but the vehicle registration certificate Part 1 (document) was not. (Copy)
VIN comparison	The vehicle identification number (VIN) was read from the vehicle and its conformity with the submitted documents was confirmed by the undersigned during the inspection.
Inspection	The inspection conditions were sufficient for the assessment of the vehicle. Lifting equipment and/or a pit were available for examining the vehicle.
Test drive	A short maneuvering and shunting exercise was carried out on the company premises.
Engine function test	An engine test run was performed.

## Value reducing factors

No.	Component group	Description
1	Wing mirror - right side	Cap - Scratch(es) - Smart repair
2	Rear bumper	Rear bumper - Scratch(es) - Smart repair
3	Boot lid / rear door	Boot lid - Scratch(es) - Smart repair
4	Sill - left side	Sill - Scratch(es) - Smart repair
5	Wheel / tyres	Alloy rim - rear right side - Scratch(es) - Loss in value

## Wear and tear

No.	Component group	Description
1	Wheel / tyres	Alloy rim - front right side - Scratch(es) - No deduction
2	Bonnet	Bonnet - Stone chips - No deduction

The vehicle shows signs of wear and tear commensurate with its age and use.

## Previous damages

No.	Previous damage	Extent of damage (Net)
1	Side right, Provided by user / customer, from 9 Apr 2024	937,73 €

## Order/Scope of Order

An order was placed to prepare a sales report for the described vehicle. This report includes the following:

- Description of key vehicle information
- Documentation of equipment features  
(*Delivery by third-party service providers*)
- Documentation of damage, defects, missing parts
- Documentation of prior damage, unrepaired prior damage, repainting
- A brief visual or functional inspection of the equipment details, if possible.  
(*Functional testing of driver assistance systems is not included in the scope of services!*)
- a photographic documentation of the vehicle



## Basis for the order

This product is based on the guidelines for vehicle returns and valuations published by Alphabet Fleet GmbH. The expert makes the specific findings in each individual case objectively, within the framework of the prescribed standards, based on their own expertise.

The vehicle inspection takes place in a fully assembled, unassembled state.

Damage or defects that can only be detected during disassembly/diagnostic work or through further investigation remain within the realm of prognostic risk. An increased risk exists due to concealed defects caused by fraudulent misrepresentation and which were not identifiable by the expert.

Damage or defects resulting from normal use or wear and tear of the vehicle will be accepted in accordance with the applicable standard.

There was no explicit identification or monetary consideration of the expected features within the product.

Features which, in their nature and extent, slightly exceed normal use but do not constitute unacceptable damage, will be documented and indicated as signs of wear, if applicable.

Damage or defects that, according to the applicable standard, can no longer be attributed to normal use or wear and tear are listed under "Value Reducing Factors" in the product description.

Depending on the product specification, a monetary ID can be provided. If this takes place, the costs can be 100% d or pro rata depending on the vehicle's age and mileage.

## Previous damages

According to available information previous damages were repaired at the vehicle. Traces of repairs, which allow conclusions about the area of repair, were not recognizable during the inspection.



Figure 1: Diagonal front (left)



Figure 2: Diagonal front (right)



Figure 3: Diagonal rear (left)



Figure 4: Diagonal rear (right)



Figure 5: Interior - front

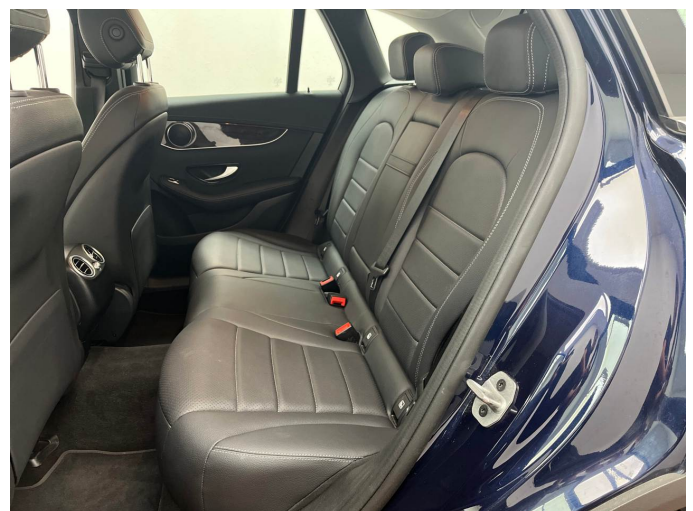


Figure 6: Interior - rear



Figure 7: Instrument cluster



Figure 8: Instrument panel



Figure 9: Interior 360° view



Figure 10: Cargo area

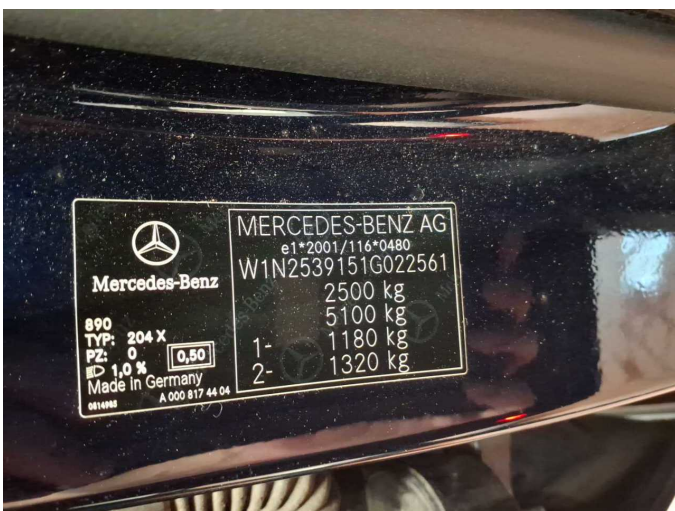


Figure 11: VIN



Figure 12: Mounted tyres



Figure 13: Documents



Figure 14: Documents



Figure 15: Navigation



Figure 16: Misc.



Figure 17: Misc.

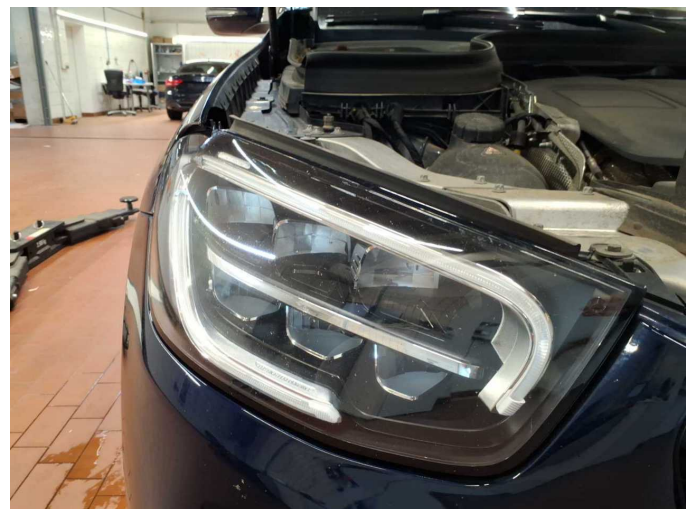


Figure 18: Misc.



Figure 19: Misc.



Figure 20: Misc.



Figure 21: Misc.



Figure 22: Misc.



Figure 23: Misc.

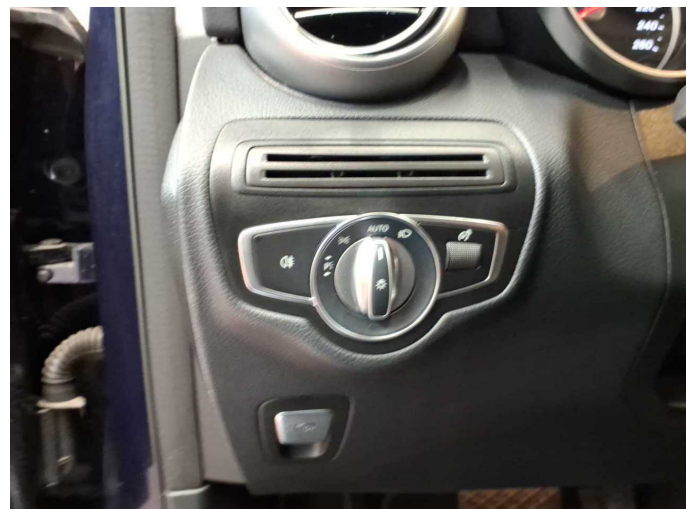


Figure 24: Misc.



Figure 25: Misc.



Figure 26: Misc.

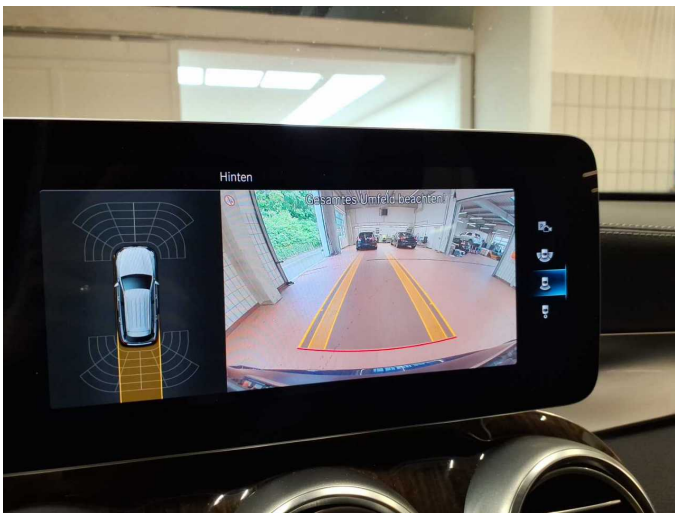


Figure 27: Misc.



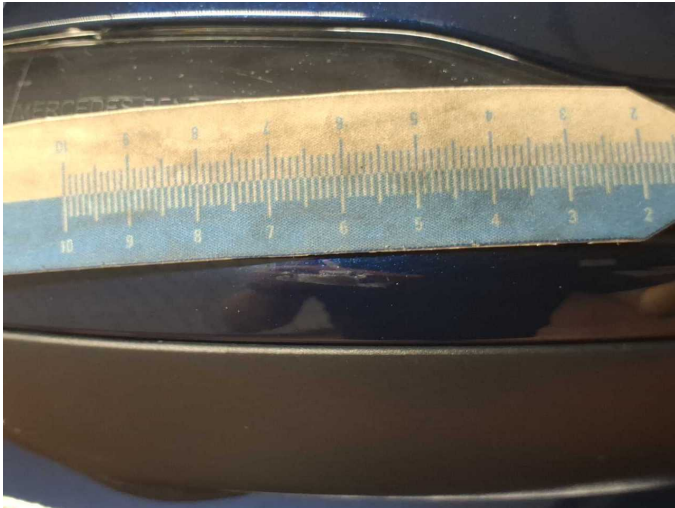
Figure 28: Misc.



Figure 29: Misc.



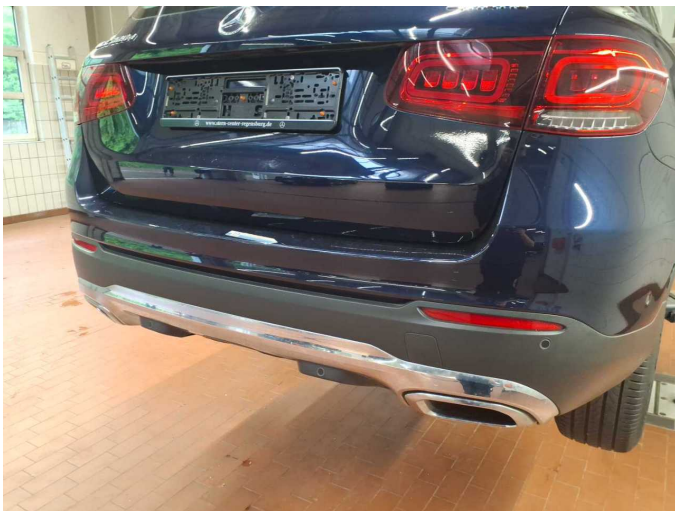
Figure 30: Misc.



**Damage 1:** Wing mirror - right side: Cap - Scratch(es) - Smart repair



**Damage 1:** Wing mirror - right side: Cap - Scratch(es) - Smart repair



**Damage 2:** Rear bumper: Rear bumper - Scratch(es) - Smart repair



**Damage 2:** Rear bumper: Rear bumper - Scratch(es) - Smart repair



**Damage 2:** Rear bumper: Rear bumper - Scratch(es) - Smart repair



**Damage 3:** Boot lid / rear door: Boot lid - Scratch(es) - Smart repair



**Damage 3:** Boot lid / rear door: Boot lid - Scratch(es) - Smart repair



**Damage 4:** Sill - left side: Sill - Scratch(es) - Smart repair



**Damage 4:** Sill - left side: Sill - Scratch(es) - Smart repair



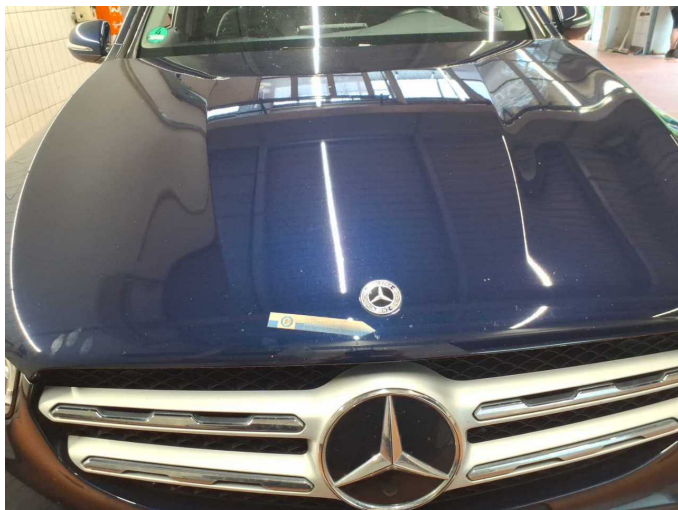
**Damage 5:** Wheel / tyres: Alloy rim - rear right side - Scratch(es) - Loss in value



**Damage 5:** Wheel / tyres: Alloy rim - rear right side - Scratch(es) - Loss in value



**Wear and tear 2:** Bonnet: Bonnet - Stone chips - No deduction



**Wear and tear 2:** Bonnet: Bonnet - Stone chips - No deduction



# Wartungshistorie

(gemäß Auftraggeber Informationen)

Fahrgestellnummer: W1N2539151G022561

Hersteller / Modell: MERCEDES-BENZ MB GLC 220 d 4Matic 9G-TRONIC Exclusive

Datum	KM-Stand	Beschreibung
13.04.2026	108.720	Bremsscheiben+Beläge v+h
05.02.2026	101.995	Reparatur Sonstiges; Systemtest/Eigendiagnose
01.12.2025	101.309	Regelwartungsdienst
28.08.2025	92.275	Reparatur Sonstiges
20.03.2025	74.541	AU
06.02.2025	73.992	Regelwartungsdienst
25.07.2024	58.990	Bremsklötze hinten
14.02.2024	47.987	Regelwartungsdienst
29.11.2022	19.718	Regelwartungsdienst