

## » Overview

**Order number:** 1002334268  
**Order completed:** 02.03.2026 14:33  
**Report number:** 10143163  
**VIN:** WVVZZZCD3PW525643



Front Left 3/4



Rear Right 3/4



Mileage

## » Vehicle Data

<b>Vehicle category:</b>	Passenger Car
<b>Vehicle type:</b>	EstateCar
<b>Make:</b>	Volkswagen
<b>Model:</b>	Golf
<b>Manufacturers and type code:</b>	0603 / CNM
<b>Date of first registration:</b>	10.02.2023
<b>Mileage:</b>	84,812 km
<b>Proof of mileage:</b>	ReadOff
<b>Exterior colour:</b>	Atlantik Blue Metallic
<b>Roof colour:</b>	Atlantik Blue Metallic
<b>Propulsion:</b>	Front
<b>Fuel:</b>	Diesel
<b>Engine size (cc):</b>	2,000 ccm
<b>Performance:</b>	85 kW (116 PS)
<b>Length:</b>	
<b>Height:</b>	
<b>Width:</b>	
<b>Permitted total weight:</b>	
<b>Wheelbase:</b>	
<b>Number of powered axles:</b>	2
<b>Cylinders:</b>	4
<b>Euronorm:</b>	Euro 6
<b>Number of doors:</b>	4
<b>Number of seats:</b>	5
<b>Gearbox:</b>	Automatic 7-speed
<b>Upholstery type:</b>	Lining fabrics
<b>Interior colour:</b>	Soul-Schwarz/Soul-Schwarz/Schwarz/ Storm Grey
<b>Number of keys:</b>	2

## » Documents & Maintenance

<b>Statutory inspection date:</b>	01.2028
<b>Registration certificate available:</b>	Yes
<b>Registration certificate received:</b>	Yes
<b>License plate:</b>	Both
<b>Maintenance book:</b>	Digital
<b>Maintenance:</b>	Not testable
<b>Maintenance last date:</b>	
<b>Maintenance last mileage:</b>	
<b>Remainder until next maintenance:</b>	472 Day(s)

10-color ambient lighting	Door and side trim panel
12-V outlet in luggage compartment	Driver alert system
2 LED reading lights in front and 2 in rear	Driver and front passenger airbag with front passenger airbag deactivation
2 USB-C ports in the front, 2 USB-C charging sockets on the center console in rear, charging capacity up to 45 W	Driving on the right
3 head restraints in rear	Dual-clutch transmission DSG DQ200
3-point seat belt for center rear seat	Dynamic headlight range control
3-point seat belts for the outer rear seats	Dynamic Road Sign Display
3-point seat belts in front with height adjustment and seat belt pretensioners	Electric auxiliary air heater
4 alloy wheels "Norfolk" 7J x 16	Electromechanical parking brake with Auto Hold function
4-cylinder diesel engine 2.0 l	Electromechanical speed-sensitive power steering
4-cylinder diesel engine 2.0 l TDI, 85 kW	Electronic differential lock XDS
6+1 speakers	Electronic engine sound
7-speed automatic transmission or dual-clutch transmission DSG, note: PR family EDF	Electronic immobilizer
Adaptive Cruise Control ACC stop & go incl. speed limiter	Electronic restriction of top speed
Air conditioning system Climatronic with enhanced air filter with activated carbon	Electronic Stability Control and electromechanical brake booster
Alternator 140 A	Elimination of nameplate for engine designation on luggage compartment lid
App-Connect incl. App-Connect Wireless for Apple CarPlay and Android Auto	Emergency call service; no registration required, service is activated upon delivery
Auto. Emergency Braking Front Assist with Pedestrian and Cyclist Monitoring	Emission standard EU6 AP
Automatic headlight control with LED separate daytime running light and entry and exit lighting	Equipment options subset for Germany
Automatically-heated washer nozzles in front	Ext. mirrors, power-adjustable and heated, with memory feature and front passenger ext. mirror lowering function
Battery 420 A (70 Ah)	Extended pedestrian protection
Black roof rails	Exterior mirrors: aspherical on driver side, convex on front passenger side
Body-colored bumpers	First aid kit, warning triangle and safety vest
Body-colored exterior mirror housings and door handles	Folding trailer hitch, with electric release
Body-colored rear spoiler	Front center armrest, height- and longitudinally adjustable
Business Premium package	Front seats with height adjustment
Car2X	Front stabilizer bar
Carpet mats in front and rear	Front-wheel drive
Chrome elements on power mirror and window regulator switches, chrome trims on the vents	Fuel system for diesel engine
Comfort equipment	Gearshift knob/handle in plastic
Comfort seats in front	Headliner
Curtain airbags in front and rear, side airbags in front, center airbag	Heated front seats
Decorative inserts "Nature Cross Brushed" for dashboard and front door trim panels	Highway light
Digital radio reception DAB+	Illuminated door handle recesses
Dimming interior rearview mirror	Illuminated vanity mirrors in sun visors
Disc brakes in front	Initial standard fuel filling
Disc brakes in rear	Inserts of front seats and outer rear seats in fabric "Life"
Diversity antenna for FM reception	Instrument cluster with electronic speedometer, odometer and trip odometer, tachometer
	ISOFIX anchors for child seats on outer rear bench seats and on front passenger seat, compatible for i-Size

Keyless Start without SAFELOCK	Special identification label for EC for M1 passenger vehicles
Laminated safety glass windshield, heat- and sound-insulating	Standard battery/alternator capacity
Leather multi-function steering wheel, heated, with shift paddles	Standard climatic zones
LED headlamps	Standard engine starter
LED rear combination lamps	Standard manufacturing sequence
Left-hand drive	Standard paint coating
License plate carrier in front and rear (ECE)	Standard pedal cluster
LongLife Service Regime	Standard rear axle
Lumbar supports in front	Standard wheel bolts
Manual in German (Germany)	Start-stop system with regenerative braking
Mobile phone interface "Comfort" with inductive charging feature	Surround lighting with welcome light
Multi-color Digital Cockpit Pro, selection of different info profiles possible	Suspension range 06 installation control only, no requirement forecast
Multifunction camera	Tailgate/trunk lid unlocking from outside
Navigation system "Discover Media" incl. Streaming & Internet	Tire Pressure Monitoring System
Net partition	Tire suppliers for EU countries
No special edition	Tires 205/55 R16
No special purpose vehicle, standard equipment	Tool kit and jack
Non-folding front passenger seat backrest	Transport protection film (minimum protection) with additional transport protection measures
Non-smoker's package: Storage compartment and 12-V outlet in front	Travel Assist, Lane Assist and Emergency Assist
Not hot country	Two-tone horn
Oncoming vehicle braking when turning and swerve support	Type approval country Germany
Online service, with OCU, with head unit coding, without engine immobilizer interconnection	Unsplit rear bench seat, asymmetric split folding backrest, with center armrest
Operating permit, alteration	UWB-capable country and carrier frequency, 433.92 to 434.42 MHz
Operating voltage 12 V	Variant
Park Distance Control - warning signals for obstacles in the front and rear	Vehicle class differentiation -5H0-
Part set without country-specific prescriptive standard	Vehicles without special upgrade measures
Preparation for We Connect and We Connect Plus	Voice control
Privacy glass for rear side windows and rear window	Wagon
Radio	Warning signal and warning light for front and rear seat belts not fastened
Rear exhaust tailpipe (standard)	Weight range 9 installation control only, no requirement forecast
Rear floor panel module, type 4	Wheelbase
Rear fog light on one side, back-up light on both sides	Windshield wiper intermittent control with light sensor
Rear shock absorption, basic version 1	Without activated carbon canister with SCR
Refrigerant R1234yf	Without Adaptive Chassis Control
Regional code " ECE " for radio	Without additional decorative trims
Remote unlocking for rear seat backrest	Without additional front underbody guard
Safety-optimized front head restraints	Without additional tires
Service indicator 30 000 km or 2 years (variable)	Without alternative drive system
Shock absorption in front	Without auxiliary heater/parking heater
Space- and weight-saving spare wheel	Without camera systems/accident sensors
Space- and weight-saving spare wheel	Without charging cable

- Without curb weight range
- Without decals and emblems
- Without electric motor (hybrid)
- Without extended safety system
- Without fire extinguisher
- Without headlamp washer system, with washer fluid level indicator
- Without head-up display
- Without hill start assist/hill descent control/comfort driving assist
- Without interior light in footwell
- Without lane change assist
- Without light control
- Without locking and starting systems
- Without mode 3 charging cable
- Without preparation for rotating beacon/siren combination
- Without preparation for two-way radio installation
- Without rear stabilizer bar
- Without roof insert (standard roof)
- Without seat ventilation/massage seat
- Without second battery
- Without special body measures

## » Tyres

### MOUNTED TYRES

Make	Location	Position	Type	Rim	Dimensions	Profile depth
Continental	Front	Left	Winter	Steel	205/55 R 16 91 H	4.0 mm
Continental	Front	Right	Winter	Steel	205/55 R 16 91 H	4.0 mm
Continental	Rear	Left	Winter	Steel	205/55 R 16 91 H	5.0 mm
Continental	Rear	Right	Winter	Steel	205/55 R 16 91 H	5.0 mm

**Permitted:** Yes

**Roadworthy:** Yes

### UNMOUNTED TYRES

Make	Location	Position	Type	Rim	Dimensions	Profile depth
Goodyear			Summer	Aluminium	205/55 R 16 91 V	5.0 mm
Goodyear			Summer	Aluminium	205/55 R 16 91 V	4.0 mm
Goodyear			Summer	Aluminium	205/55 R 16 91 V	5.0 mm
Goodyear			Summer	Aluminium	205/55 R 16 91 V	4.0 mm

**Permitted:** Yes

**Roadworthy:** Yes

### SPARE/EMERGENCY TYRE & ACCESSORIES

**Permitted:** Yes

**Roadworthy:** Yes

**Emergency tyre provided:** Yes

**Toolkit present:** Yes

**Jack present:** Yes

## » Devaluation Factors

Nr	Location	Damage type	Repair type
1	Steering wheel	Scratch(es)	Visual depreciation

## » Usage Damages

The vehicle shows signs of wear consistent with its age, mileage and purpose.

## » Commercial devaluation

Accidental vehicle:	Yes
Known previous damages:	Yes
Previous damages detectable:	No
Repainting present:	Yes
Repainting professionally executed:	Yes
Paint thickness measurement performed:	Yes - with abnormalities/deviations

Nr	Location	Damage	Repair type	Repair cost
1	Other	Part of hull loss		€ 4,439.27
2	Other	Liability loss		€ 6,088.93
<b>Total without VAT:</b>				<b>€ 10,528.20</b>

### PAINTTHICKNESS MEASUREMENT RESULTS

Part	Paint (µm)
Paint thickness Door FL (µm)	233.0
Paint thickness Door RL (µm)	233.0
Paint thickness Wing RL (µm)	203.0

At least 3 measurements were carried out per component.

## » Notes On The Assessment

**Details of the assignment and the scope of the assessment:**

The order was placed to prepare a condition report on the described vehicle.

The vehicle condition assessment was carried out in accordance with the order on the basis of the standards for vehicle assessments specified by the client. The expert makes the findings in the individual case on the basis of his own expertise and at his own expert discretion.

**Vehicle identification:**

WVWZZZCD3PW525643

VIN checked and matches documentation

**Vehicle condition:**

Dirty

**Inspection condition:**

Insufficient

**Lifting platform/lifting equipment used:**

No

**Testdrive carried out:**

No

**Engine test carried out:**

Yes

» **Remarks**

This copy was generated electronically. It is valid without an original signature.

## » Commercial Pictures



Front Left 3/4



Front Right 3/4



Rear Left 3/4



Rear Right 3/4



Mileage



Tools



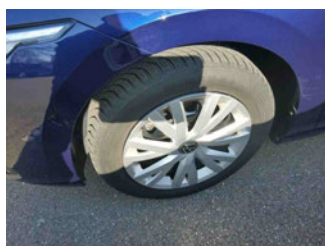
Sill outer L



Sill outer R



Chassis nr



Wheel FL



Wheel FR



Wheel RL



Wheel RR



Additional wheel 1



Additional wheel 2



Additional wheel 3



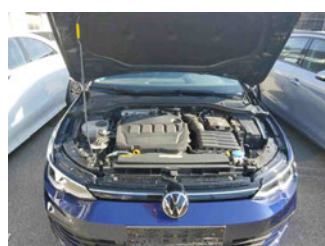
Additional wheel 4



Spare wheel



Central console



Engine compartment



Documents



Interior arrangement



Registration Certificate



Tyres in vehicle



Towbar



Paint thickness Door RL



Paint thickness Door FL



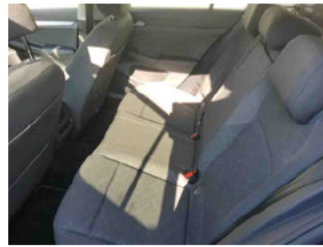
Paint thickness Wing RL



History Maintenance



Interior - front



Interior - rear



Underbody scan



GPS/Radio

» Devaluation Damages

**DEVALUATION FACTORS**

1 - Steering wheel - Scratch(es) - Visual depreciation

