

Expertise

Protocol number: 46195114
Order No. / Reference: 26470077
Inspection date: 23 Jun 2026

Manufacturer: Peugeot

Model: e-208 GT Elektromotor 136

VIN: VR3UHZKXZNT127990



Vehicle details

Manufacturer / Type / Model / Equipment

Peugeot e-208 GT Elektromotor 136

Vehicle Identification number VR3UHZKXZNT127990

Mileage (Read) 11,541 km

First registration 14 Mar 2023

Number of holders 1

Power / Engine displacement 57 kw / 0 ccm

Fuel type / Cylinder Electric / 0

Gearbox / Number of gears Direct drive / 1

Type of drive Front drive

Type of vehicle Saloon car

Colour / colour code Vertigo Blau Metallic

Doors / Seats 5 / 5

Upholstery type Cloth / leather combination

Colour of upholstery Black-Anthracite



Vehicle details

Maintenance booklet / proof	digital proof / complete	Next maintenance in	21,000 km
Last service on / at	06/2025 at 7,563 km		
Key is / should be	2 / 2	FZG documents	ZB#2 (B) was available (copy), ZB#1 (S) was not available.
		Letter No.	GG046378
Previous damage / Accident	None detectable	Repainting	None detectable
Inspection conditions	sufficient	Lifting equipment / pit	No
Test drive	Not performed	Engine function test	Performed
Manufacturer key number/ type code number	1889 / ACB 00027		
Emission standard	EURO6;WLTP;AM;PI/CI; M, N1 I	fine dust sticker	
Permitted total weight	1,910 kg	Empty weight	

Tyres

Mounted tyres

#	Tyre size	Type of tyre	Manufacturer	Tread depth
1)	195/55 R16 87H	Winter tyres on Light alloy	Goodyear	6mm / 6mm
2)	195/55 R16 87H	Winter tyres on Light alloy	Goodyear	6mm / 6mm

Additional tyres

#	Tyre size	Type of tyre	Manufacturer	Tread depth
1)	205/45 R17 88H	Summer tyres on Light alloy	Michelin	6mm / 6mm
2)	205/45 R17 88H	Summer tyres on Light alloy	Continental	6mm / 6mm

Replacement

Typ	Tyre size	Type of tyre	Manufacturer	Tread depth
	Tirefit	Expiration date 04/2028		

Legend: Tread depth information for the left tire is listed first, for the right tire it is listed second on the axle in the direction of travel.

TÜV SÜD Auto Partner GmbH
Gutenbergstraße 13
70771 Leinfelden-Echterdingen

Inspection location
ARS Altmann AG Automobillogistik
Römerstraße 3
64560 Riedstadt



Equipment



Standard equipment

- "e" logo on the C-pillar and e208 logo on the tailgate
- ABS (Anti-lock Braking System)
- Airbag for driver and front passenger
- Airbag: Curtain airbags front and rear
- Electrically folding exterior mirrors with LED approach lighting
- Exterior mirror caps Perla Nera Black
- Trim panel between the taillights in glossy black
- On-board computer
- Black headliner
- Three-point seat belts at all seats
- EBV (Electronic Brakeforce Distribution)
- Front parking aid, acoustic and visual
- Driving mode selector "Eco" and "Sport"
- Electric rear windows
- High beam assist
- Follow-me-home function (automatic)
- noise-reducing windshield
- Front and rear floor mats with decorative stitching in green
- Transmission: Direct drive
- Green decorative stitching on the dashboard, steering wheel and the armrests of the front and rear doors
- rear window wiper
- Rear spoiler, glossy black
- Frameless interior mirror
- Map pockets on the front seatbacks
- Automatic climate control with activated carbon filter
- Radiator grille with applications in body color
- LED ambient lighting on the dashboard and door trim
- White LED lighting on the center console and in the front footwell
- Steering wheel adjustable for height and reach
- light sensor
- Illuminated makeup mirrors for driver and front passenger
- Fatigue warning
- Emergency brake assist
- On-board charger 11 kW, 3-phase
- Peugeot Connect Box & Real-time Navigation by TomTom Services
- Radio: RCC audio system
- Radio accessories: Mirror Screen
- Rain sensor
- Tire repair kit (compressor and tire sealant spray)
- Reversing camera with 180° surround view
- Keyless start system
- Electric power steering
- Seats: Driver's seat height adjustable
- 12-volt socket in the trunk
- Electric version technology
- Doors lock automatically when driving off
- Immobiliser
- Decorative strip below the side windows in glossy black
- Storage compartment with smartphone holder
- Active Safety Brake
- Airbag: Front side airbag
- Acoustic pedestrian warning system (AVAS)
- Electrically adjustable and heated exterior mirrors with integrated LED turn signals
- Hill start assist
- Turn signals with lane change indicator function
- third brake light
- Digital instrument cluster with high-resolution 10" screen, adjustable and customizable
- Rear parking aid, acoustic and visual
- ESP (Electronic Stability Program) with ASR (Anti-Slip Regulation)
- Electric windows, front
- electric parking brake
- Front collision warning
- Full LED headlights
- Cruise control system with speed limiter
- Cup holder in the center console
- GT logo on the trunk lid
- Heated rear window
- Rear apron in black
- Interior mirror automatically dimming
- ISOFIX child seat anchor
- Manual child lock
- Headrests (5)
- Charging cable: Mode 3 charging cable (Type 2, up to 7.4 kW), 6 meters long
- LED ceiling lighting at the front
- LED taillights
- Steering wheel: Small multifunction leather steering wheel, flattened at the top and bottom.
- Front center armrests
- Navigation system: 3D navigation system NAC incl. 3D instrument cluster
- Aluminum pedals and stainless steel door sills
- Pollen filter
- Upholstery: Fabric/faux leather (Capy)
- Radio accessories: Digital radio reception DAB+
- Wheel arches in glossy black
- Tire pressure monitoring system
- Wheels: 17" "Bronx" alloy wheels, two-tone
- Rear seat backrest 40/60 split folding
- Side and rear windows are more heavily tinted.
- Seats: Passenger seat height adjustable
- Lane keeping assist with steering intervention
- Daytime running lights: LED daytime running lights
- Door handles painted in car color
- Traffic sign recognition
- Central locking system, activatable from inside via remote control



Extra equipment

- 3D navigation system
- Roof: Black Diamond roof (roof in black)
- Keyless System Plus (keyless access and start system)
- Lackierung: Sonderlackierung "Vertigo Blau" metallic
- Seats: Heated front seats
- Adaptive Cruise Control (ACC) with Stop & Go function (including Lane Positioning Assistant and Active Safety Brake Plus)
- Radio accessories: Multifunctional touchscreen with 10" HD color display (capacitive screen - 7 piano key "toggle switches" - incl. PEUGEOT Connect Box with the free telematics services Peugeot Connect SOS and Peugeot Connect Assistance - GPS module - Integrated European SIM card - Speaker and microphone - Emergency battery)

Brief expert findings

Documents submitted	At the time of the inspection, the vehicle registration certificate Part 2 (title) was available, but the vehicle registration certificate Part 1 (document) was not. (Copy)
VIN comparison	The vehicle identification number (VIN) was read from the vehicle and its conformity with the submitted documents was confirmed by the undersigned during the inspection.
Inspection	The inspection conditions were sufficient for the assessment of the vehicle. No lifting equipment or pit was available for inspecting the vehicle. Therefore, inspection of the vehicle's underside was only possible to a limited extent.
Test drive	No test drive/shunting maneuver was carried out during the inspection of the vehicle.
Engine function test	An engine test run was performed.

Value reducing factors

No.	Component group	Description
1	Door - front left side	Door - Scratch(es) - Smart repair
2	2nd wheel set	1 alloy rim - Scratch(es) - Loss in value
3	2nd wheel set	1 alloy rim (Mit Materialabtrag, Großflächig verkratzt) - Scratched - Replace
4	2nd wheel set	1 alloy rim (Mit Materialabtrag) - Scratched - Replace
5	Vehicle glazing	Windscreen (Mit Rissbildung im Randbereich) - Stone chips - Replace

Wear and tear

No.	Component group	Description
1	Front bumper	Front bumper - Stone chips - No deduction
2	Bonnet	Bonnet - Stone chips - No deduction
3	Interior	Interior - Soiled - No deduction
4	Rear bumper	Rear bumper - Scratch(es) - No deduction

The vehicle shows signs of wear and tear commensurate with its age and use.

Order/Scope of Order

An order was placed to prepare a sales report for the described vehicle. This report includes the following:

- Description of key vehicle information
- Documentation of equipment features
(*Delivery by third-party service providers*)
- Documentation of damage, defects, missing parts
- Documentation of prior damage, unrepaired prior damage, repainting
- A brief visual or functional inspection of the equipment details, if possible.
(*Functional testing of driver assistance systems is not included in the scope of services!*)
- a photographic documentation of the vehicle



Basis for the order

This product is based on the guidelines for vehicle returns and valuations published by Alphabet Fleet GmbH. The expert makes the specific findings in each individual case objectively, within the framework of the prescribed standards, based on their own expertise.

The vehicle inspection takes place in a fully assembled, unassembled state.

Damage or defects that can only be detected during disassembly/diagnostic work or through further investigation remain within the realm of prognostic risk. An increased risk exists due to concealed defects caused by fraudulent misrepresentation and which were not identifiable by the expert.

Damage or defects resulting from normal use or wear and tear of the vehicle will be accepted in accordance with the applicable standard.

There was no explicit identification or monetary consideration of the expected features within the product.

Features which, in their nature and extent, slightly exceed normal use but do not constitute unacceptable damage, will be documented and indicated as signs of wear, if applicable.

Damage or defects that, according to the applicable standard, can no longer be attributed to normal use or wear and tear are listed under "Value Reducing Factors" in the product description.

Depending on the product specification, a monetary ID can be provided. If this takes place, the costs can be 100% d or pro rata depending on the vehicle's age and mileage.

Previous damages

No apparent prior damage that had been repaired could be found on the vehicle.

Comments

Der angegebene Winterradsatz ist kein Bestandteil des Auslieferungsumfangs.



Figure 1: Diagonal front (left)



Figure 2: Diagonal front (right)



Figure 3: Diagonal rear (left)



Figure 4: Diagonal rear (right)



Figure 5: Interior - front



Figure 6: Interior - rear



Figure 7: Instrument cluster



Figure 8: Instrument panel



Figure 9: Interior 360° view



Figure 10: Cargo area

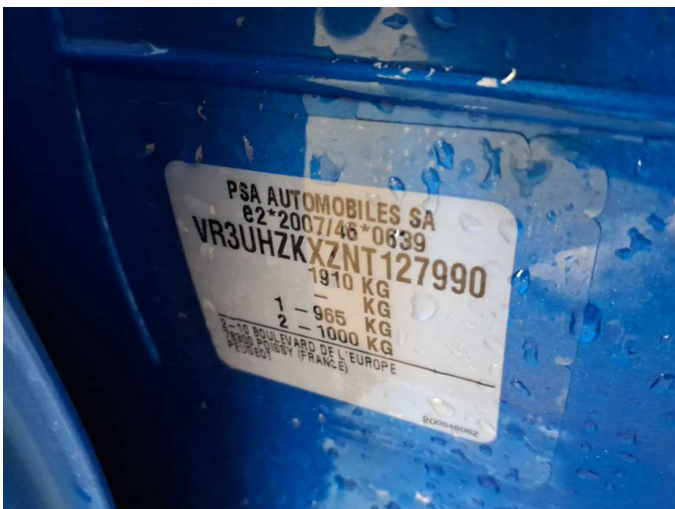


Figure 11: VIN



Figure 12: Mounted tyres

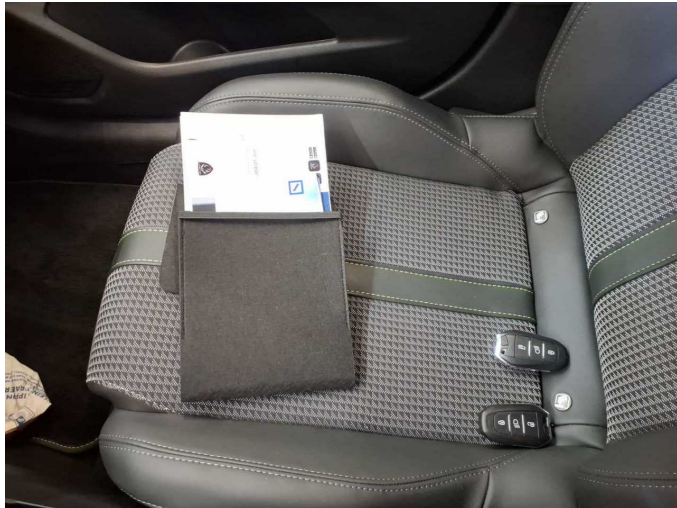


Figure 13: Documents



Figure 14: Documents



Figure 15: Additional tyres



Figure 16: Navigation



Figure 17: Misc.



Figure 18: Misc.



Figure 19: Misc.



Figure 20: Misc.

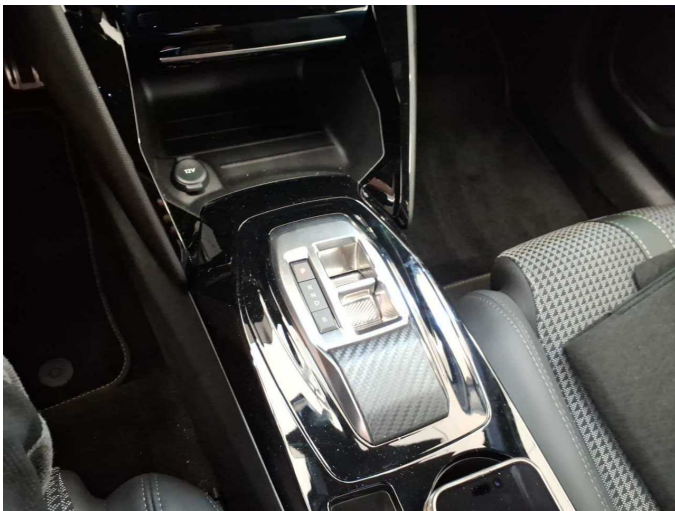


Figure 21: Misc.



Figure 22: Misc.

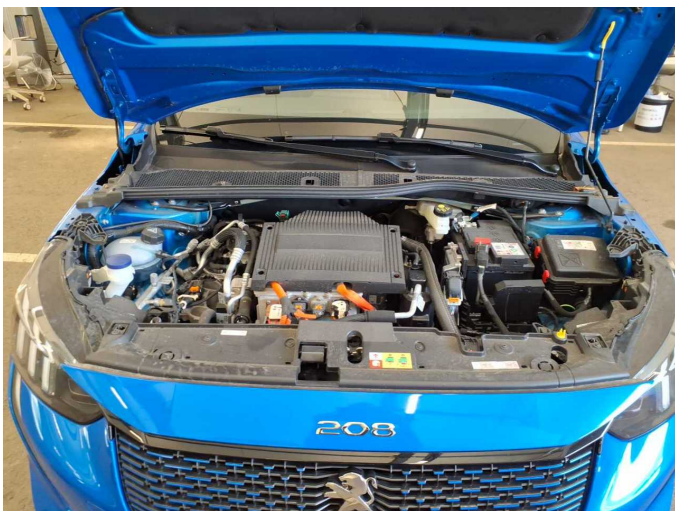


Figure 23: Misc.

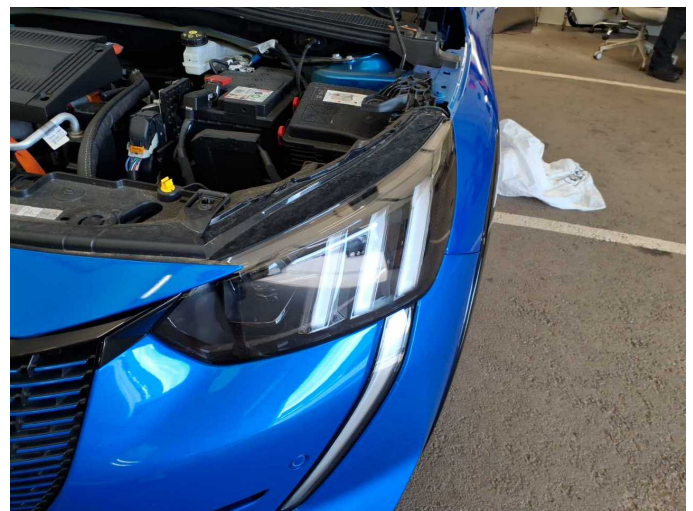


Figure 24: Misc.



Figure 25: Misc.



Figure 26: Misc.



Figure 27: Misc.



Figure 28: Misc.

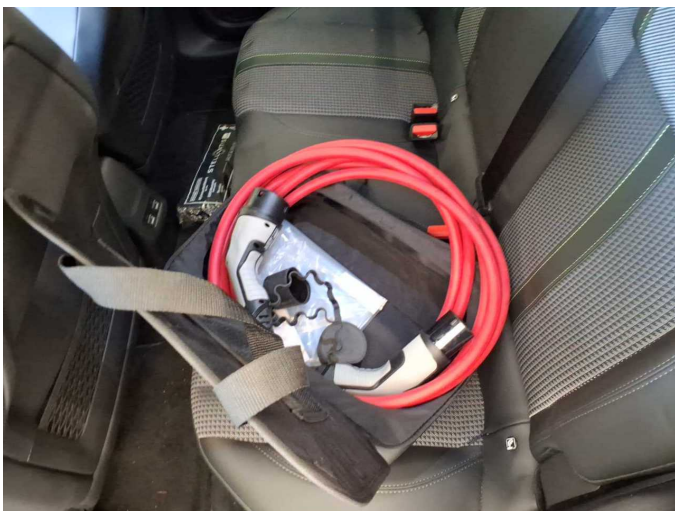


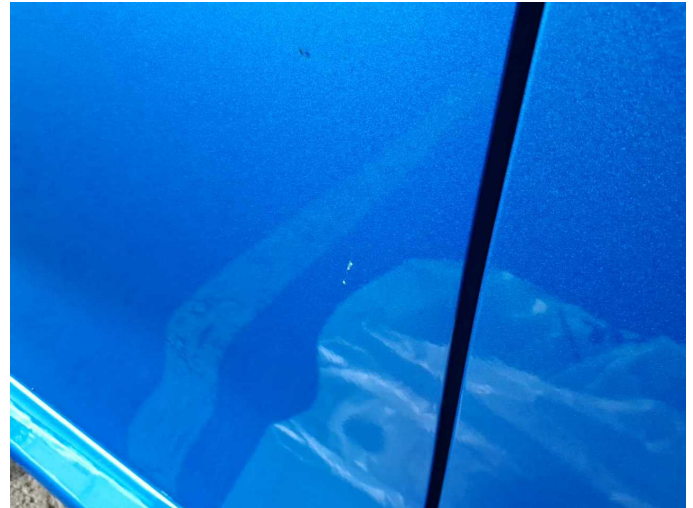
Figure 29: Misc.



Figure 30: Misc.



Damage 1: Door - front left side: Door - Scratch(es) - Smart repair



Damage 1: Door - front left side: Door - Scratch(es) - Smart repair



Damage 2: 2nd wheel set: 1 alloy rim - Scratch(es) - Loss in value



Damage 2: 2nd wheel set: 1 alloy rim - Scratch(es) - Loss in value



Damage 3: 2nd wheel set: 1 alloy rim (Mit Materialabtrag, Großflächig verkratzt) - Scratched - Replace



Damage 3: 2nd wheel set: 1 alloy rim (Mit Materialabtrag, Großflächig verkratzt) - Scratched - Replace



Damage 3: 2nd wheel set: 1 alloy rim (Mit Materialabtrag, Großflächig verkratzt) - Scratched - Replace



Damage 4: 2nd wheel set: 1 alloy rim (Mit Materialabtrag) - Scratched - Replace



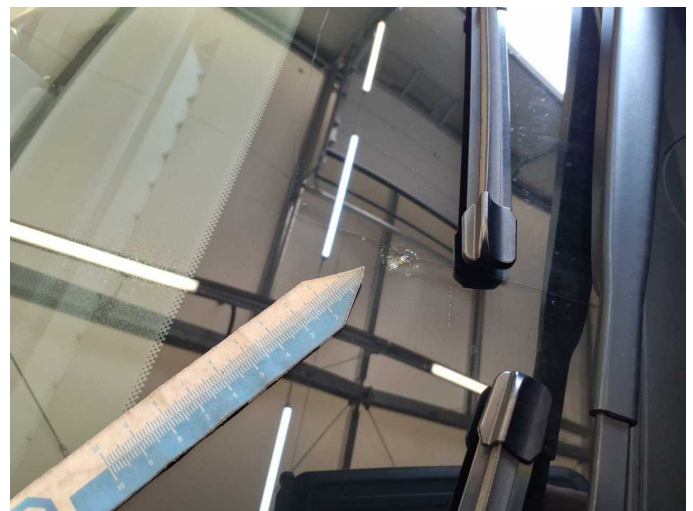
Damage 4: 2nd wheel set: 1 alloy rim (Mit Materialabtrag) - Scratched - Replace



Damage 5: Vehicle glazing: Windscreen (Mit Rissbildung im Randbereich) - Stone chips - Replace



Damage 5: Vehicle glazing: Windscreen (Mit Rissbildung im Randbereich) - Stone chips - Replace



Damage 5: Vehicle glazing: Windscreen (Mit Rissbildung im Randbereich) - Stone chips - Replace



Wartungshistorie

(gemäß Auftraggeber Informationen)

Fahrgestellnummer: VR3UHZKXZNT127990

Hersteller / Modell: PEUGEOT PEUGEOT 208 Elektromotor 136 GT

Datum	KM-Stand	Beschreibung
13.06.2025	7.563	Bremsflüssigkeit; Bremsflüssigkeit ern; Regelwartungsdienst
08.05.2024	3.640	Regelwartungsdienst